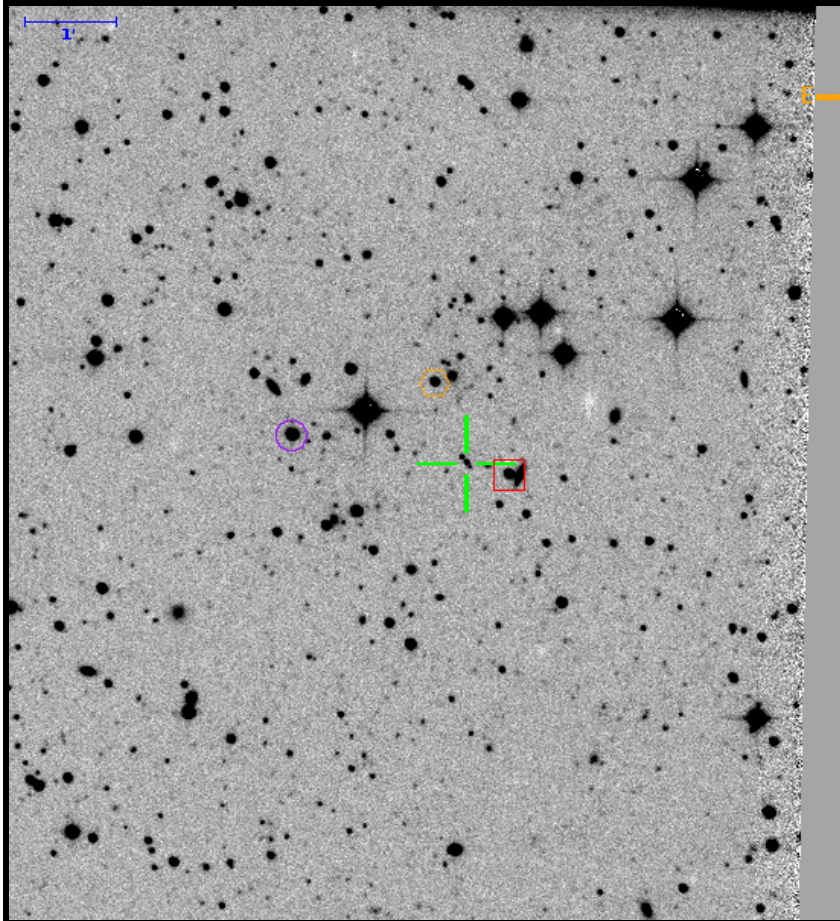


Finding Chart for PTF51101b

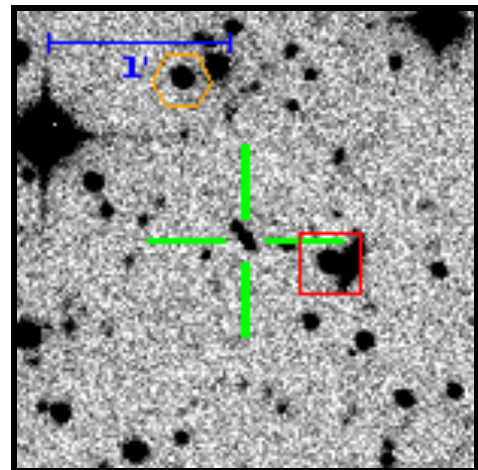
RA=01:20:59.60 DEC=+32:55:44.8



Target (green cross)		
RA	01:20:59.60 20.24832700	(J2000)
DEC	+32:55:44.8 32.92912400	
Med Mag	19.39 ± 1.22	R-band
Ref Mag	19.77 ± 0.03	R-band
Offset Star S1 (red box)		
RA	01:20:57.37 20.23905720	(J2000)
DEC	+32:55:37.1 32.92696121	
Med Mag	16.80 ± 0.15	R-band
Ref Mag	17.09 ± 0.02	R-band
Distance	29.1"	
Offset Star S2 (orange hex)		
RA	01:21:01.24 20.25514716	(J2000)
DEC	+32:56:37.8 32.94383422	
Med Mag	17.70 ± 0.05	R-band
Ref Mag	17.70 ± 0.02	R-band
Distance	56.8"	
Offset Star S3 (purple circle)		
RA	01:21:08.68 20.28618135	(J2000)
DEC	+32:56:03.5 32.93430877	
Med Mag	15.65 ± 0.02	R-band
Ref Mag	15.64 ± 0.02	R-band
Distance	115.9"	

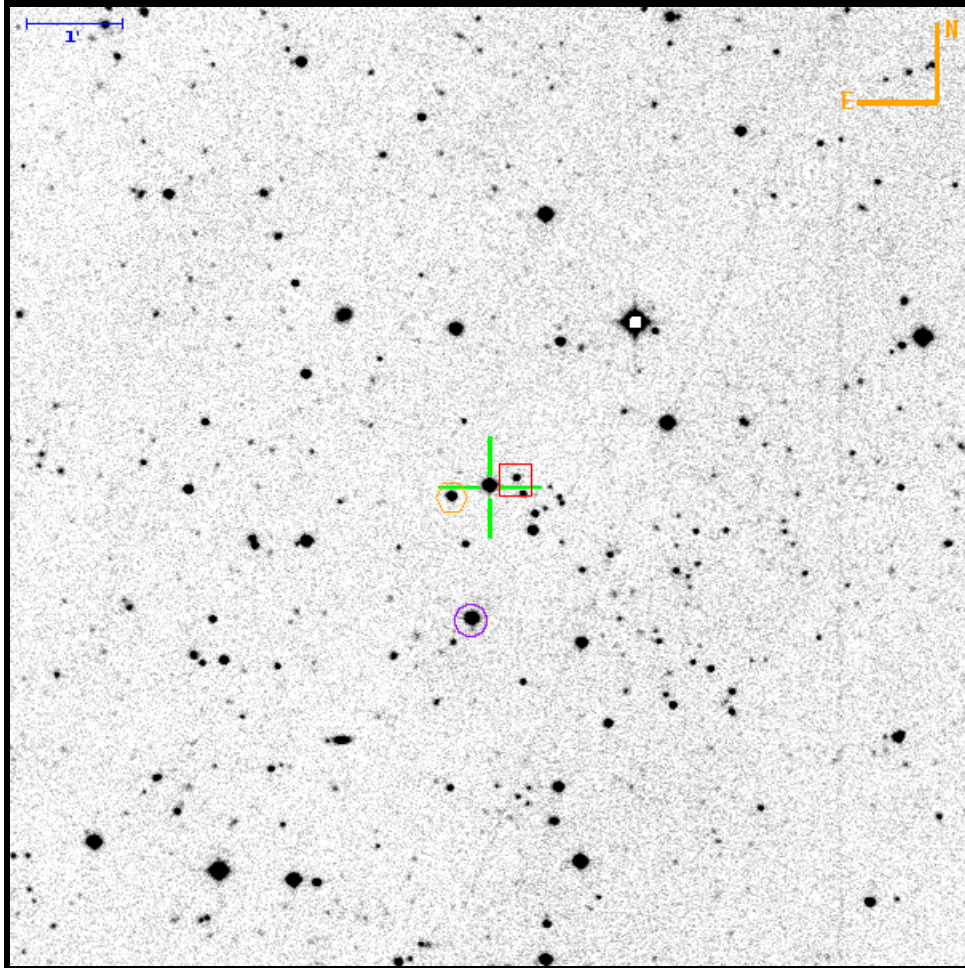
Theoretical 5σ limiting magnitude: 23.35. Filter: R. PTF field: 02 / 100007 / 06.

		To			
		Target	box	hex	circle
From	Target	0	28.01" W 7.79" S	20.61" E 52.96" N	114.38" E 18.67" N
	box	28.01" E 7.79" N	0	48.62" E 60.74" N	142.40" E 26.45" N
	hex	20.60" W 52.96" S	48.61" W 60.74" S	0	93.76" E 34.29" S
	circle	114.38" W 18.67" S	142.38" W 26.45" S	93.77" W 34.29" N	0



Finding Chart for PTFS1201n

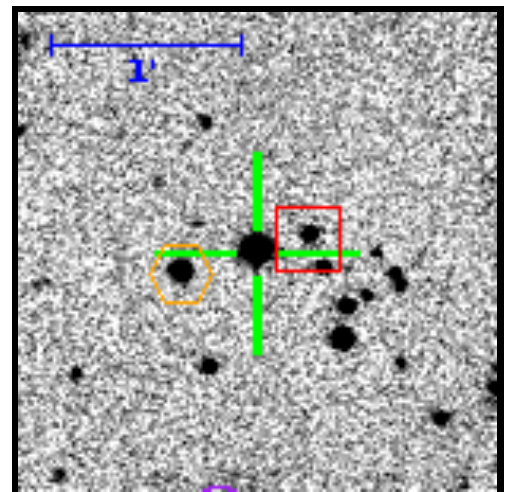
RA=01:36:55.46 DEC=+07:16:29.2



Target (green cross)		
RA	01:36:55.46 24.23108900	(J2000)
DEC	+07:16:29.2 7.27478800	
Med Mag	15.34 ± 0.48	R-band
Ref Mag	15.40 ± 0.05	R-band
Offset Star S1 (red box)		
RA	01:36:54.34 24.22639759	(J2000)
DEC	+07:16:34.0 7.27611654	
Med Mag	18.89 ± 0.10	R-band
Ref Mag	18.90 ± 0.02	R-band
Distance	17.4"	
Offset Star S2 (orange hex)		
RA	01:36:57.08 24.23784312	(J2000)
DEC	+07:16:22.7 7.27297110	
Med Mag	17.39 ± 0.05	R-band
Ref Mag	17.40 ± 0.01	R-band
Distance	25.0"	
Offset Star S3 (purple circle)		
RA	01:36:56.24 24.23434298	(J2000)
DEC	+07:15:05.3 7.25147541	
Med Mag	15.36 ± 0.01	R-band
Ref Mag	15.39 ± 0.01	R-band
Distance	84.7"	

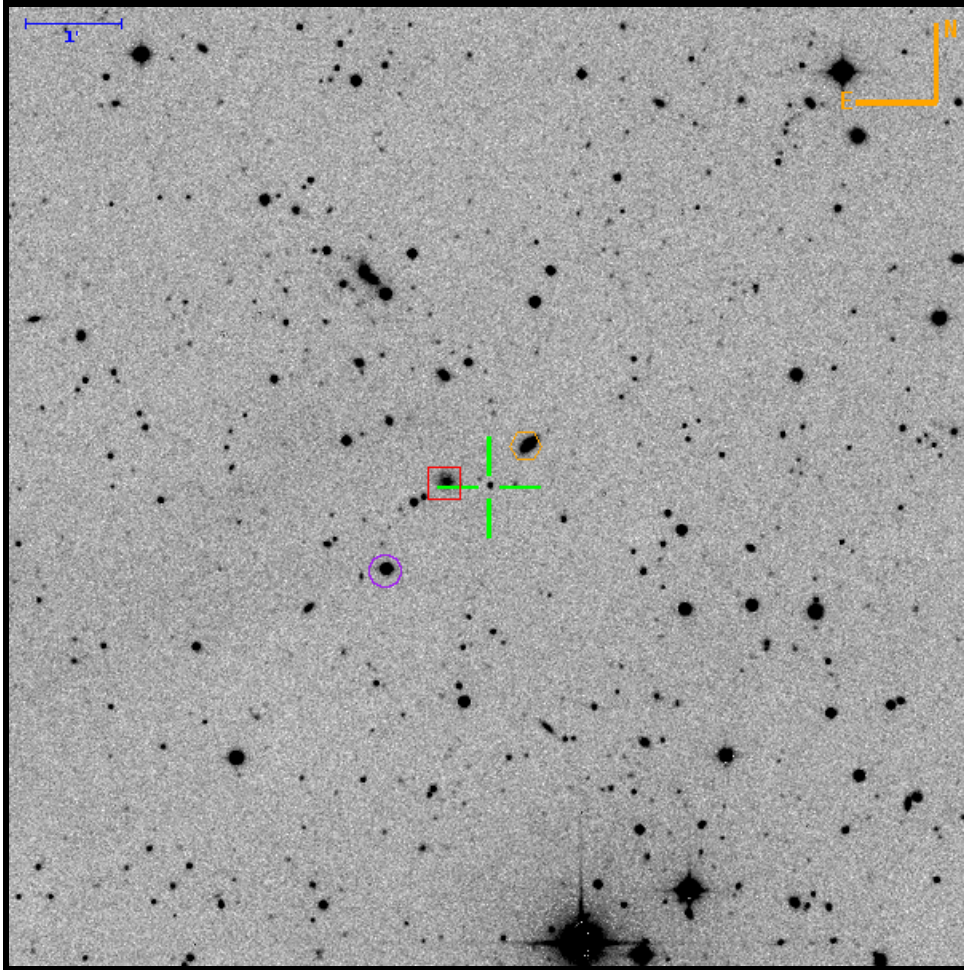
Theoretical 5σ limiting magnitude: 22.49. Filter: R. PTF field: 02 / 003019 / 06.

		To			
		Target	box	hex	circle
From	Target	0	16.75" W 4.78" N	24.12" E 6.54" S	11.62" E 83.93" S
	box	16.75" E 4.78" S	0	40.87" E 11.32" S	28.37" E 88.71" S
	hex	24.12" W 6.54" N	40.87" W 11.32" N	0	12.50" W 77.38" S
	circle	11.62" W 83.93" N	28.37" W 88.71" N	12.50" E 77.38" N	0



Finding Chart for PTFS1101aa

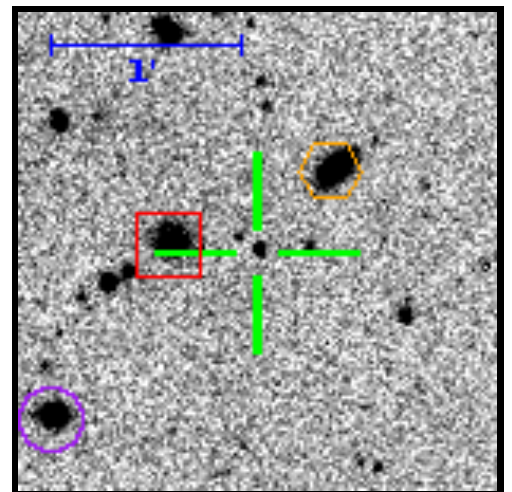
RA=01:51:51.88 DEC=+14:00:47.2



Target (green cross)		
RA	01:51:51.88 27.96618600	(J2000)
DEC	+14:00:47.2 14.01310300	
Med Mag	20.02 ± 1.07	R-band
Ref Mag	20.01 ± 0.08	R-band
Offset Star S1 (red box)		
RA	01:51:53.76 27.97400060	(J2000)
DEC	+14:00:49.6 14.01378415	
Med Mag	18.99 ± 0.27	R-band
Ref Mag	18.76 ± 0.08	R-band
Distance	27.4"	
Offset Star S2 (orange hex)		
RA	01:51:50.24 27.95931920	(J2000)
DEC	+14:01:12.8 14.02023423	
Med Mag	17.65 ± 0.07	R-band
Ref Mag	17.62 ± 0.08	R-band
Distance	35.1"	
Offset Star S3 (purple circle)		
RA	01:51:56.35 27.98478080	(J2000)
DEC	+13:59:54.8 13.99856881	
Med Mag	15.96 ± 0.02	R-band
Ref Mag	15.98 ± 0.08	R-band
Distance	83.4"	

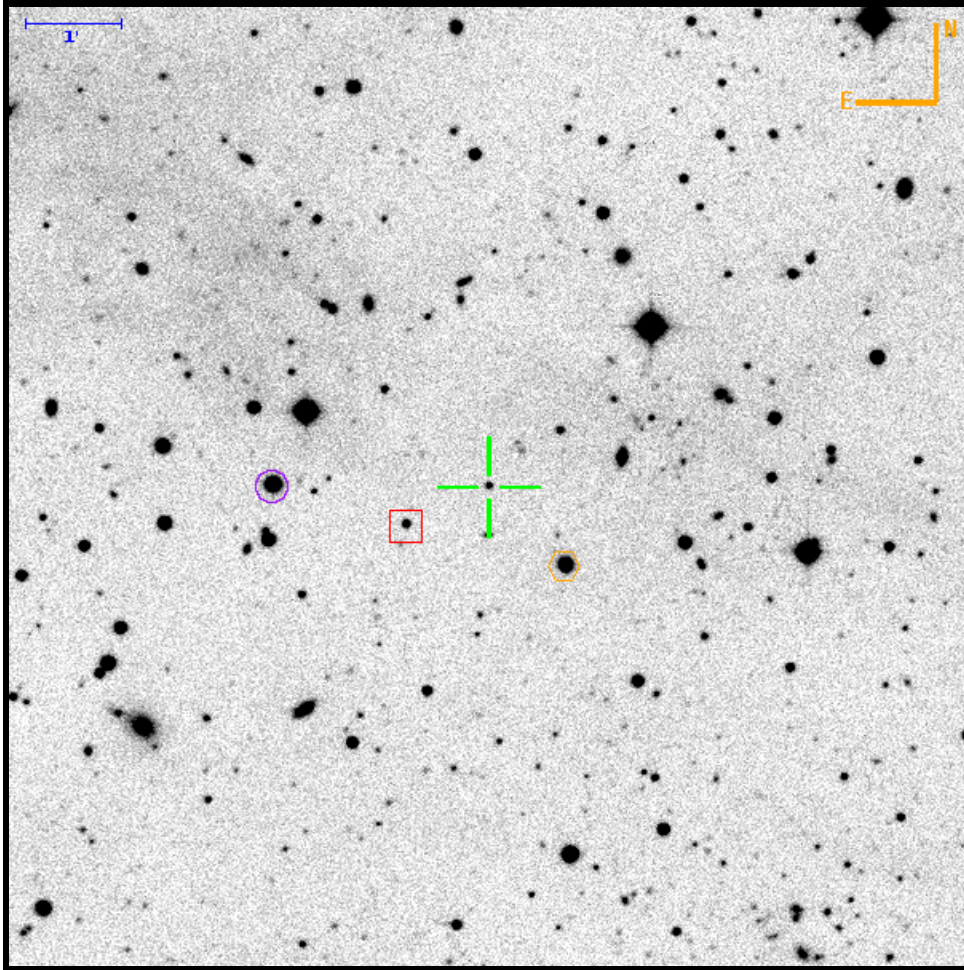
Theoretical 5 σ limiting magnitude: 23.15. Filter: R. PTF field: 02 / 100055 / 04.

		To			
		Target	box	hex	circle
From	Target	0	27.30" E 2.45" N	23.98" W 25.67" N	64.95" E 52.32" S
	box	27.30" W 2.45" S	0	51.28" W 23.22" N	37.65" E 54.78" S
	hex	23.98" E 25.67" S	51.28" E 23.22" S	0	88.93" E 78.00" S
	circle	64.95" W 52.32" N	37.66" W 54.78" N	88.94" W 78.00" N	0



Finding Chart for PTFS1402au

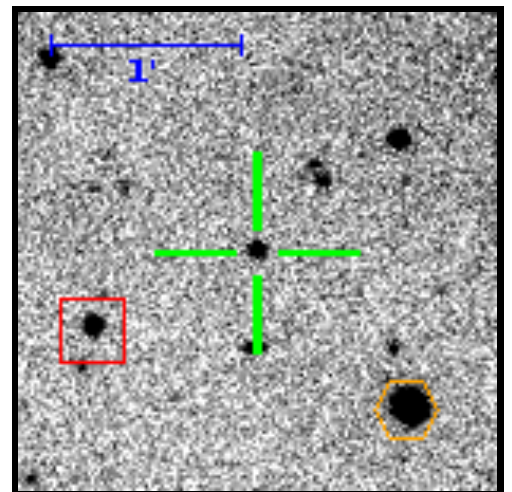
RA=02:13:07.96 DEC=+18:44:15.8



Target (green cross)		
RA	02:13:07.96 33.28315700	(J2000)
DEC	+18:44:15.8 18.73771100	
Med Mag	19.85 ± 0.16	R-band
Ref Mag	19.75 ± 0.03	R-band
Offset Star S1 (red box)		
RA	02:13:11.61 33.29836304	(J2000)
DEC	+18:43:51.7 18.73102930	
Med Mag	18.83 ± 0.13	R-band
Ref Mag	18.80 ± 0.02	R-band
Distance	57.2"	
Offset Star S2 (orange hex)		
RA	02:13:04.59 33.26913689	(J2000)
DEC	+18:43:26.2 18.72395368	
Med Mag	17.18 ± 0.04	R-band
Ref Mag	17.13 ± 0.02	R-band
Distance	68.8"	
Offset Star S3 (purple circle)		
RA	02:13:17.46 33.32276161	(J2000)
DEC	+18:44:16.5 18.73790985	
Med Mag	15.13 ± 0.01	R-band
Ref Mag	15.13 ± 0.02	R-band
Distance	135.0"	

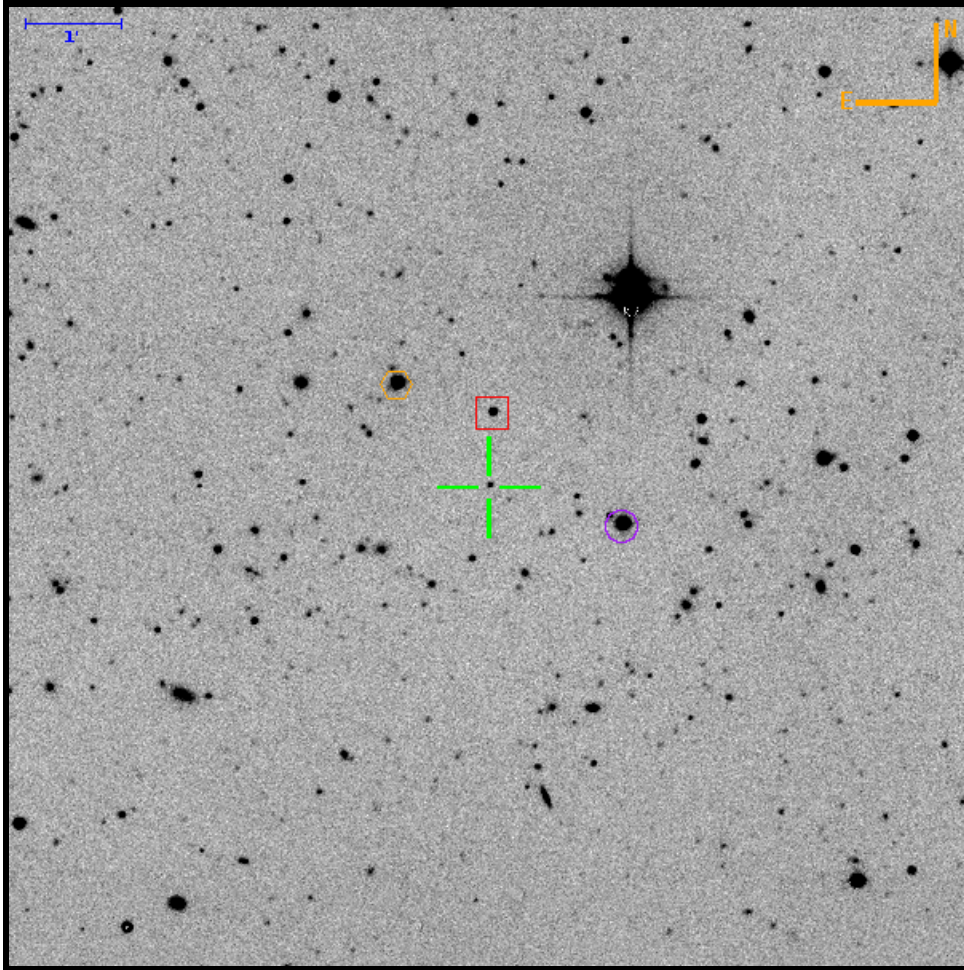
Theoretical 5 σ limiting magnitude: 22.84. Filter: R. PTF field: 02 / 003536 / 07.

		To			
		Target	box	hex	circle
From	Target	0	51.84" E 24.05" S	47.80" W 49.53" S	135.02" E 0.72" N
	box	51.84" W 24.05" N	0	99.64" W 25.47" S	83.18" E 24.77" N
	hex	47.80" E 49.53" N	99.65" E 25.47" N	0	182.83" E 50.24" N
	circle	135.02" W 0.72" S	83.18" W 24.77" S	182.82" W 50.24" S	0



Finding Chart for PTFS1103i

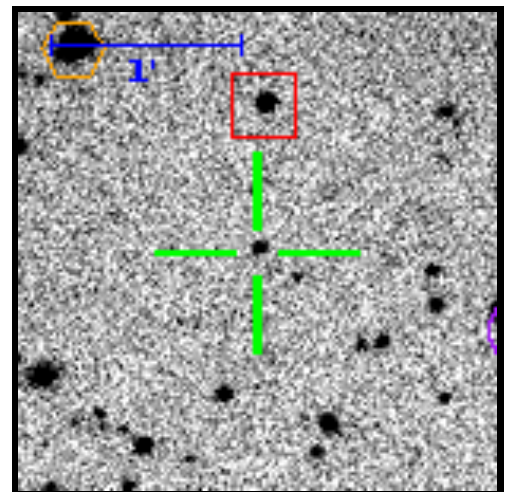
RA=03:10:32.78 DEC=-09:45:06.3



Theoretical 5 σ limiting magnitude: 22.84. Filter: R. PTF field: 02 / 100121 / 02.

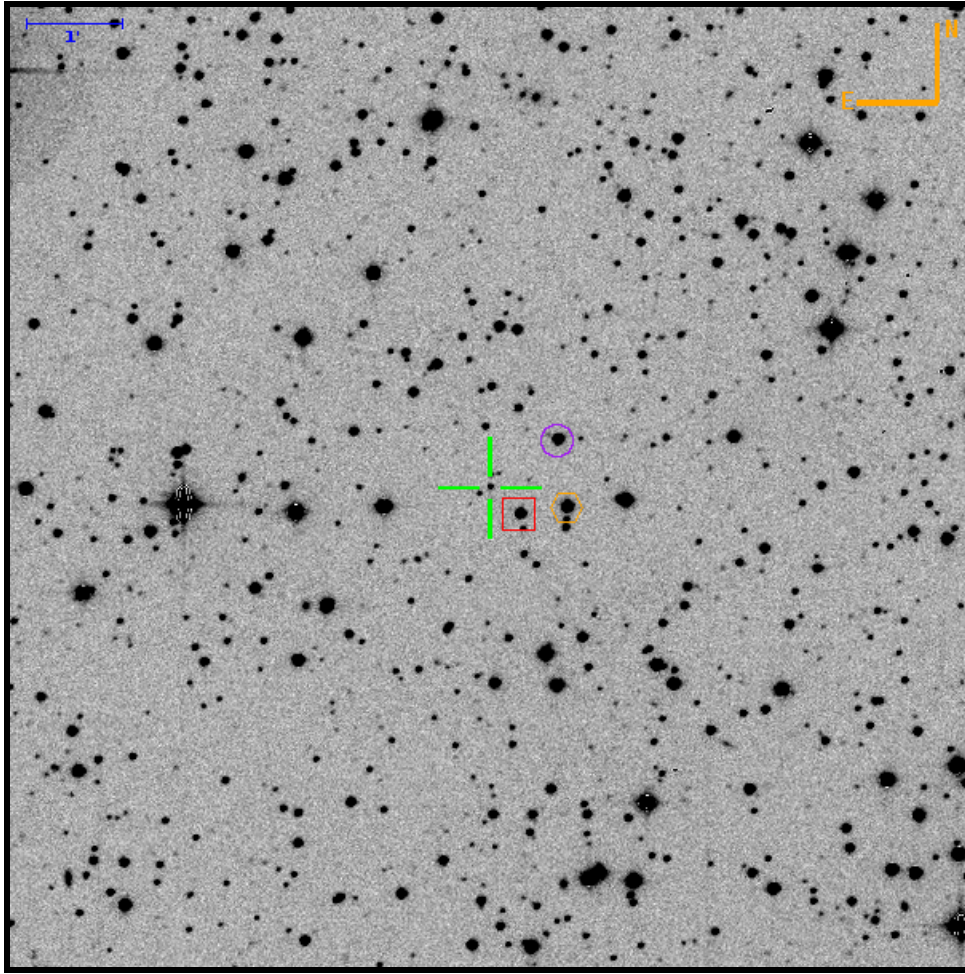
Target (green cross)		
RA	03:10:32.78 47.63657500	(J2000)
DEC	-09:45:06.3 -9.75174000	
Med Mag	20.00 \pm 1.14	R-band
Ref Mag	20.26 \pm 0.05	R-band
Offset Star S1 (red box)		
RA	03:10:32.63 47.63595178	(J2000)
DEC	-09:44:20.2 -9.73894863	
Med Mag	18.36 \pm 0.10	R-band
Ref Mag	18.35 \pm 0.04	R-band
Distance	46.1"	
Offset Star S2 (orange hex)		
RA	03:10:36.67 47.65278456	(J2000)
DEC	-09:44:02.0 -9.73388871	
Med Mag	15.24 \pm 0.04	R-band
Ref Mag	15.24 \pm 0.04	R-band
Distance	86.2"	
Offset Star S3 (purple circle)		
RA	03:10:27.12 47.61301935	(J2000)
DEC	-09:45:30.3 -9.75840608	
Med Mag	14.93 \pm 0.04	R-band
Ref Mag	14.94 \pm 0.04	R-band
Distance	87.0"	

		To			
		Target	box	hex	circle
From	Target	0	2.21" W 46.05" N	57.51" E 64.26" N	83.58" W 24.00" S
	box	2.21" E 46.05" S	0	59.72" E 18.22" N	81.37" W 70.05" S
	hex	57.51" W 64.26" S	59.73" W 18.22" S	0	141.09" W 88.26" S
	circle	83.57" E 24.00" N	81.36" E 70.05" N	141.08" E 88.26" N	0



Finding Chart for PTFS1118x

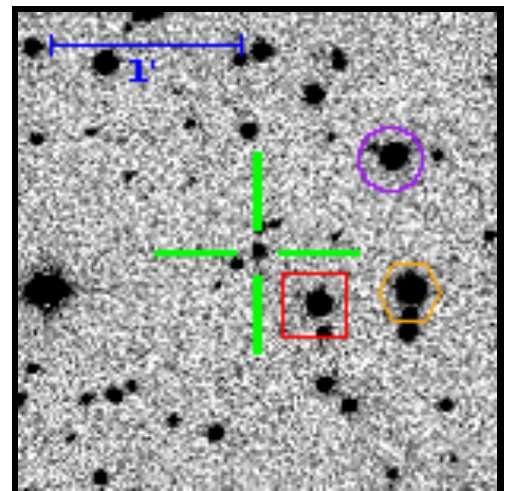
RA=18:44:39.17 DEC=+43:22:28.1



Theoretical 5 σ limiting magnitude: 21.94. Filter: R. PTF field: 02 / 004581 / 08.

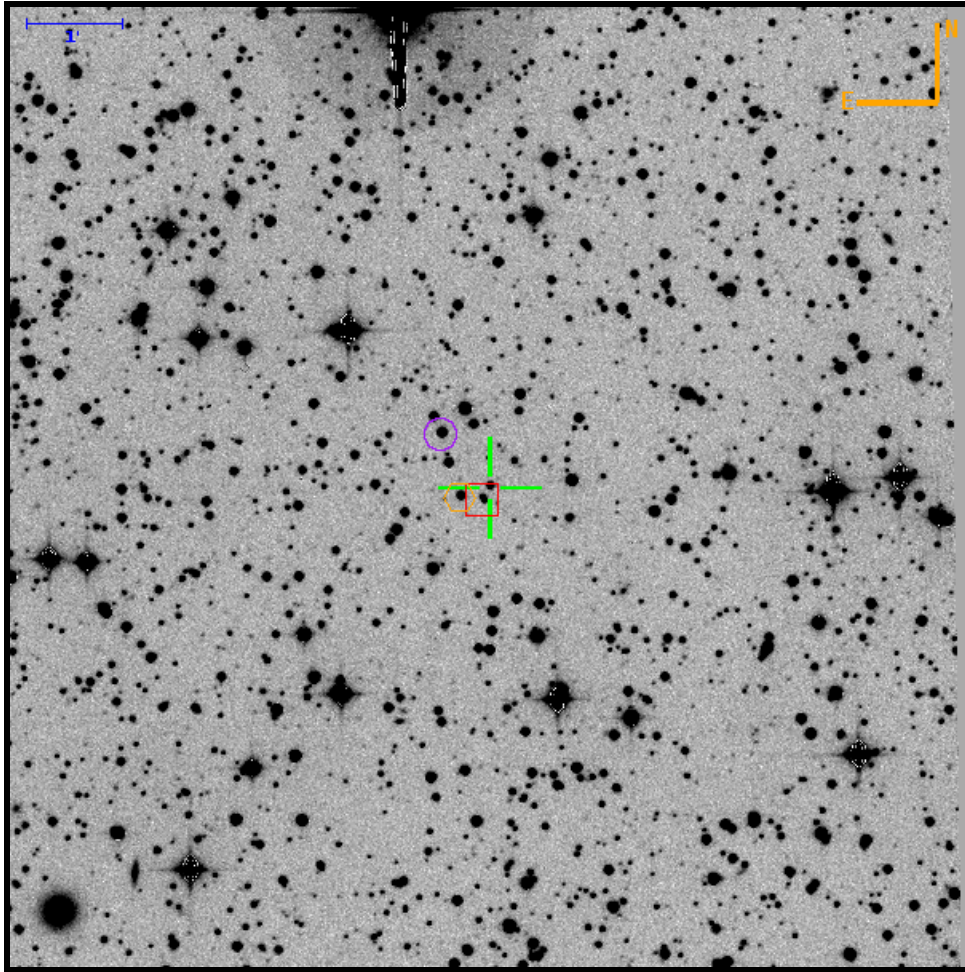
Target (green cross)		
RA	18:44:39.17 281.16320000	(J2000)
DEC	+43:22:28.1 43.37447100	
Med Mag	16.35 \pm 1.84	R-band
Ref Mag	18.87 \pm 0.13	R-band
Offset Star S1 (red box)		
RA	18:44:37.46 281.15607344	(J2000)
DEC	+43:22:11.3 43.36979228	
Med Mag	15.79 \pm 0.02	R-band
Ref Mag	15.37 \pm 0.08	R-band
Distance	25.1"	
Offset Star S2 (orange hex)		
RA	18:44:34.77 281.14486406	(J2000)
DEC	+43:22:15.5 43.37097249	
Med Mag	14.84 \pm 0.03	R-band
Ref Mag	14.42 \pm 0.08	R-band
Distance	49.6"	
Offset Star S3 (purple circle)		
RA	18:44:35.27 281.14694170	(J2000)
DEC	+43:22:57.9 43.38274795	
Med Mag	15.50 \pm 0.03	R-band
Ref Mag	15.06 \pm 0.08	R-band
Distance	51.9"	

		To			
		Target	box	hex	circle
From	Target	0	18.65" W 16.84" S	47.98" W 12.59" S	42.54" W 29.80" N
	box	18.65" E 16.84" N	0	29.33" W 4.25" N	23.90" W 46.64" N
	hex	47.98" E 12.59" N	29.33" E 4.25" S	0	5.44" E 42.39" N
	circle	42.54" E 29.80" S	23.89" E 46.64" S	5.44" W 42.39" S	0



Finding Chart for PTFS1119h

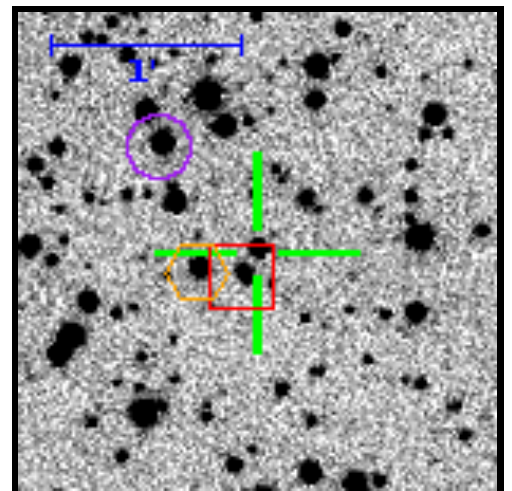
RA=19:28:56.45 DEC=+43:05:37.3



Target (green cross)		
RA	19:28:56.45 292.23521700	(J2000)
DEC	+43:05:37.3 43.09369800	
Med Mag	17.15 ± 0.92	R-band
Ref Mag	17.24 ± 0.04	R-band
Offset Star S1 (red box)		
RA	19:28:56.85 292.23686976	(J2000)
DEC	+43:05:29.4 43.09149304	
Med Mag	17.82 ± 0.03	R-band
Ref Mag	17.82 ± 0.04	R-band
Distance	9.0"	
Offset Star S2 (orange hex)		
RA	19:28:58.14 292.24225162	(J2000)
DEC	+43:05:31.1 43.09198342	
Med Mag	16.72 ± 0.01	R-band
Ref Mag	16.71 ± 0.04	R-band
Distance	19.5"	
Offset Star S3 (purple circle)		
RA	19:28:59.20 292.24667562	(J2000)
DEC	+43:06:10.7 43.10296439	
Med Mag	15.99 ± 0.06	R-band
Ref Mag	15.99 ± 0.04	R-band
Distance	44.9"	

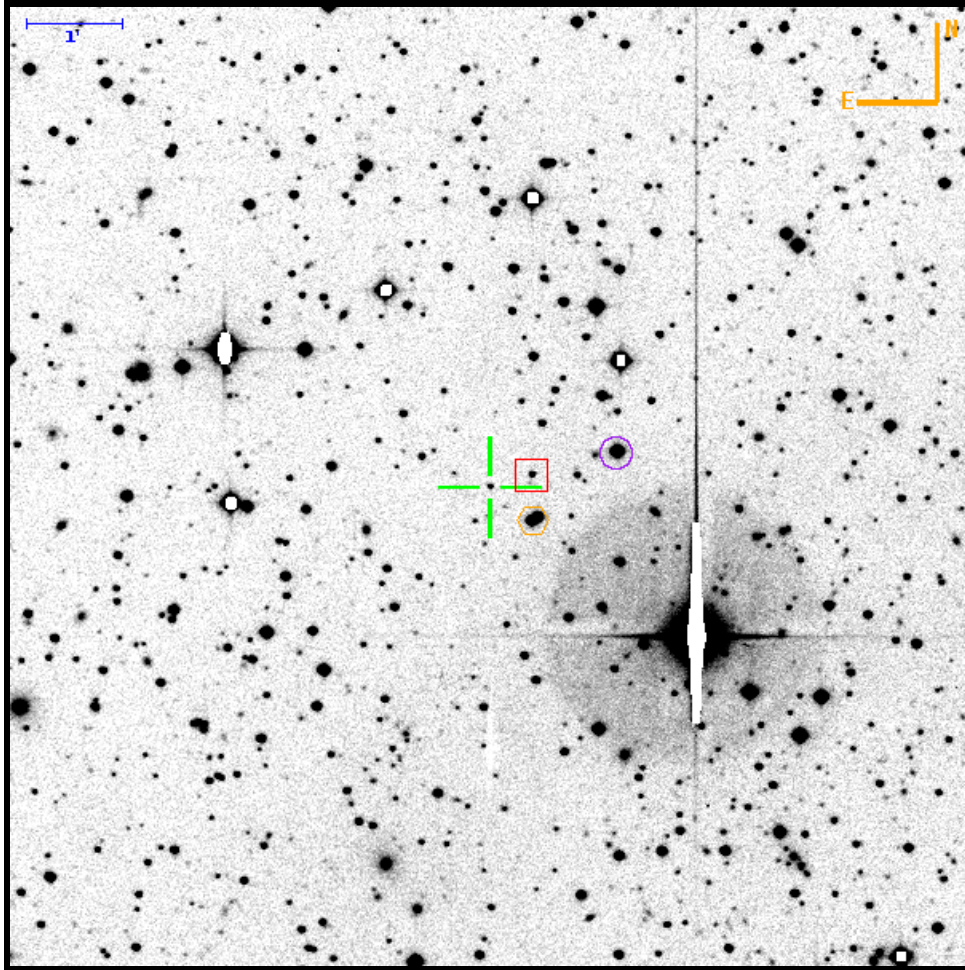
Theoretical 5σ limiting magnitude: 22.43. Filter: R. PTF field: 02 / 004583 / 10.

		To			
		Target	box	hex	circle
From	Target	0	4.34" E 7.94" S	18.49" E 6.17" S	30.12" E 33.36" N
	box	4.35" W 7.94" N	0	14.15" E 1.77" N	25.78" E 41.30" N
	hex	18.49" W 6.17" N	14.15" W 1.77" S	0	11.63" E 39.53" N
	circle	30.12" W 33.36" S	25.77" W 41.30" S	11.63" W 39.53" S	0



Finding Chart for PTFS1120q

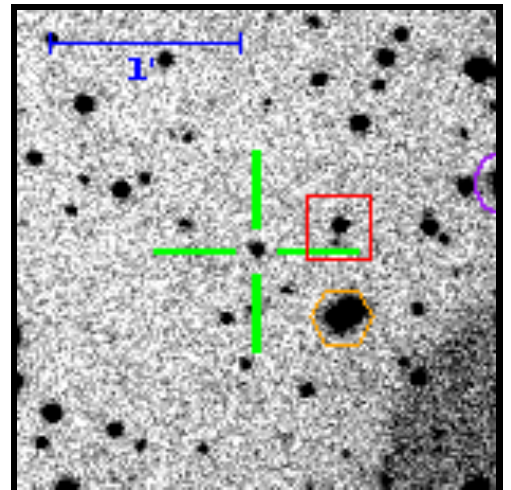
RA=20:48:17.87 DEC=-06:10:45.0



Target (green cross)		
RA	20:48:17.87 312.07445000	(J2000)
DEC	-06:10:45.0 -6.17916600	
Med Mag	19.45 ± 0.88	R-band
Ref Mag	19.47 ± 0.04	R-band
Offset Star S1 (red box)		
RA	20:48:16.09 312.06704769	(J2000)
DEC	-06:10:37.3 -6.17702505	
Med Mag	18.84 ± 0.07	R-band
Ref Mag	18.82 ± 0.02	R-band
Distance	27.6"	
Offset Star S2 (orange hex)		
RA	20:48:16.03 312.06679907	(J2000)
DEC	-06:11:06.1 -6.18501389	
Med Mag	14.94 ± 0.01	R-band
Ref Mag	14.94 ± 0.01	R-band
Distance	34.5"	
Offset Star S3 (purple circle)		
RA	20:48:12.47 312.05197868	(J2000)
DEC	-06:10:22.6 -6.17294719	
Med Mag	14.53 ± 0.01	R-band
Ref Mag	14.54 ± 0.02	R-band
Distance	83.5"	

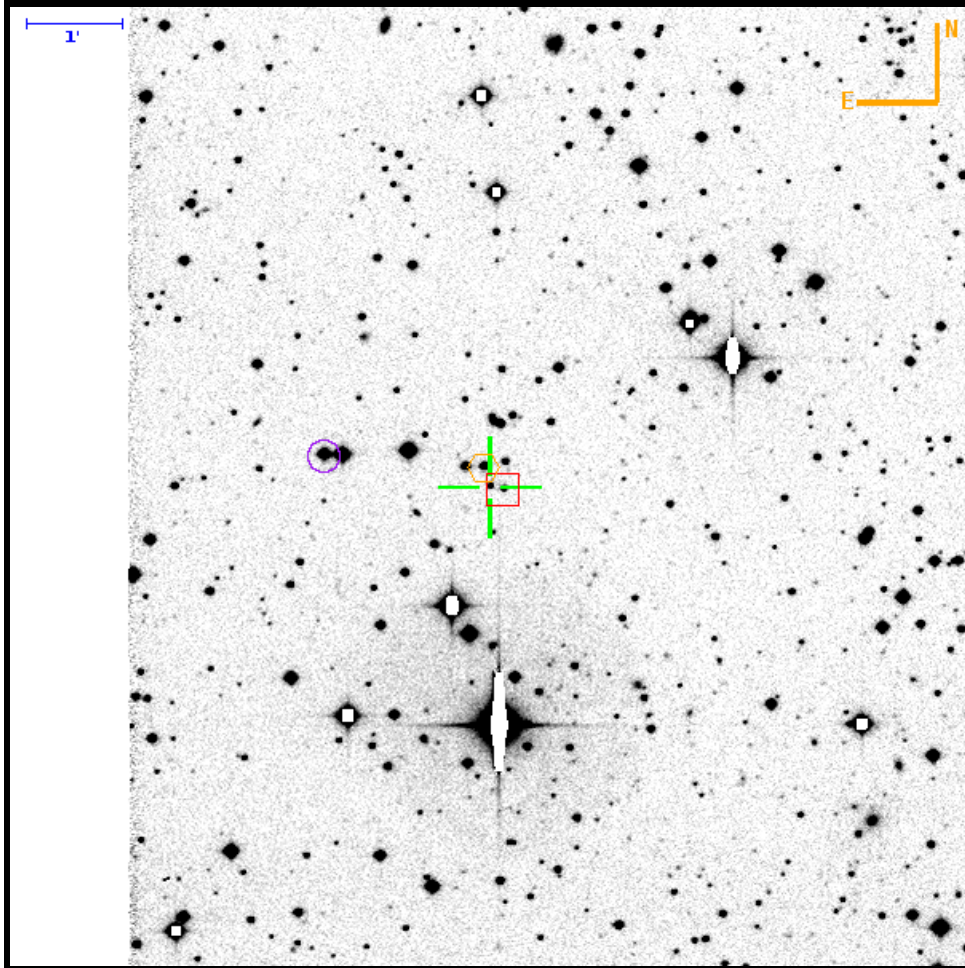
Theoretical 5 σ limiting magnitude: 22.47. Filter: R. PTF field: 02 / 002473 / 06.

		To			
		Target	box	hex	circle
From	Target	0	26.49" W 7.71" N	27.38" W 21.05" S	80.43" W 22.39" N
	box	26.49" E 7.71" S	0	0.89" W 28.76" S	53.93" W 14.68" N
	hex	27.38" E 21.05" N	0.89" E 28.76" N	0	53.04" W 43.44" N
	circle	80.43" E 22.39" S	53.93" E 14.68" S	53.04" E 43.44" S	0



Finding Chart for PTFS1120t

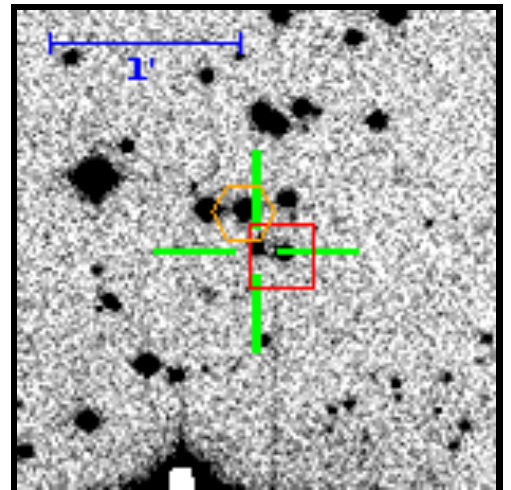
RA=20:59:14.87 DEC=-06:12:20.5



Target (green cross)		
RA	20:59:14.87 314.81194800	(J2000)
DEC	-06:12:20.5 -6.20569000	
Med Mag	18.61 ± 0.23	R-band
Ref Mag	18.68 ± 0.04	R-band
Offset Star S1 (red box)		
RA	20:59:14.30 314.80957328	(J2000)
DEC	-06:12:22.1 -6.20612513	
Med Mag	18.25 ± 0.07	R-band
Ref Mag	18.25 ± 0.02	R-band
Distance	8.6"	
Offset Star S2 (orange hex)		
RA	20:59:15.12 314.81301909	(J2000)
DEC	-06:12:08.1 -6.20225266	
Med Mag	16.75 ± 0.02	R-band
Ref Mag	16.76 ± 0.02	R-band
Distance	13.0"	
Offset Star S3 (purple circle)		
RA	20:59:21.90 314.84126210	(J2000)
DEC	-06:12:00.1 -6.20003871	
Med Mag	15.16 ± 0.01	R-band
Ref Mag	15.16 ± 0.02	R-band
Distance	106.9"	

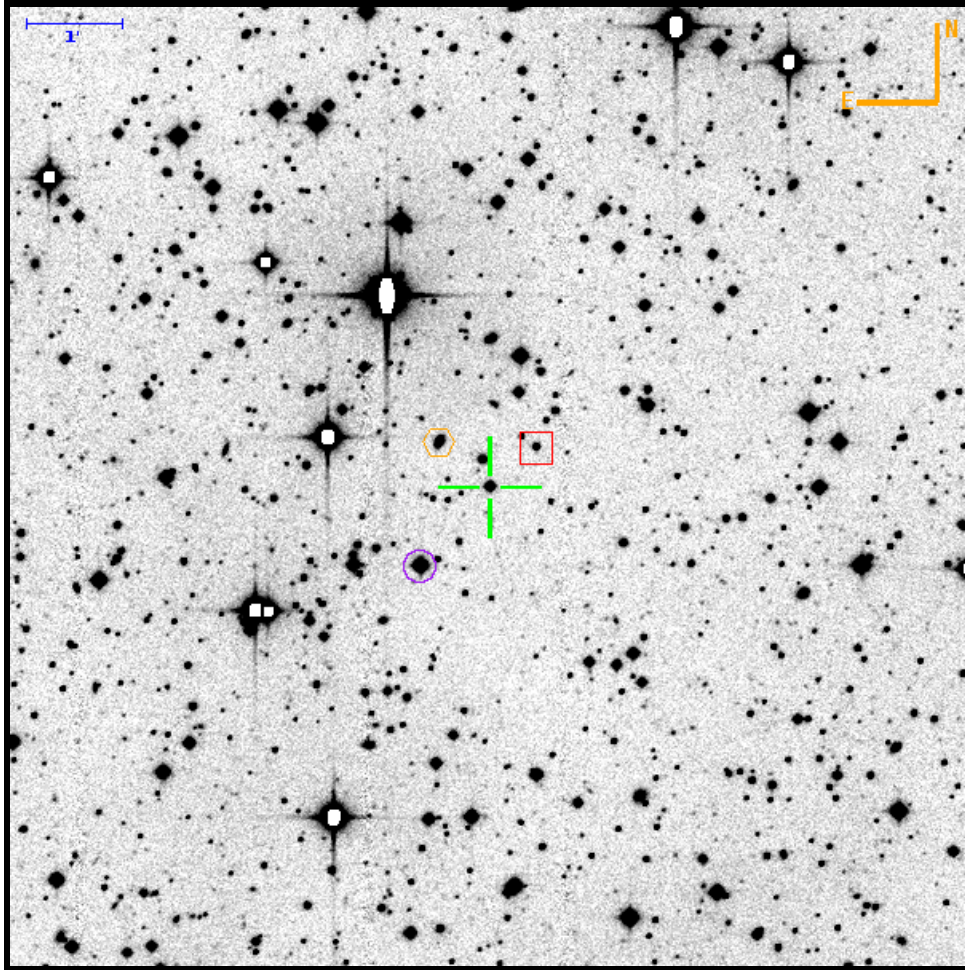
Theoretical 5σ limiting magnitude: 22.55. Filter: R. PTF field: 02 / 002473 / 10.

		To			
		Target	box	hex	circle
From	Target	0	8.50" W 1.57" S	3.83" E 12.37" N	104.91" E 20.34" N
	box	8.50" E 1.57" N	0	12.33" E 13.94" N	113.41" E 21.91" N
	hex	3.83" W 12.37" S	12.33" W 13.94" S	0	101.08" E 7.97" N
	circle	104.91" W 20.34" S	113.41" W 21.91" S	101.08" W 7.97" S	0



Finding Chart for PTFS1121y

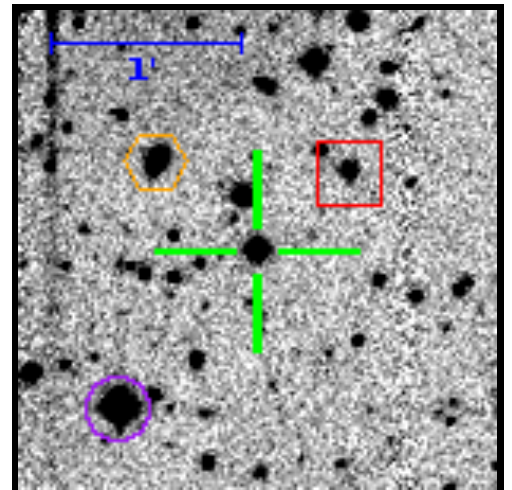
RA=21:00:14.11 DEC=+00:44:46.0



Target (green cross)		
RA	21:00:14.11 315.05880600	(J2000)
DEC	+00:44:46.0 0.74610100	
Med Mag	16.43 ± 0.94	R-band
Ref Mag	16.62 ± 0.04	R-band
Offset Star S1 (red box)		
RA	21:00:12.16 315.05066122	(J2000)
DEC	+00:45:10.9 0.75303120	
Med Mag	18.24 ± 0.86	R-band
Ref Mag	18.24 ± 0.01	R-band
Distance	38.5"	
Offset Star S2 (orange hex)		
RA	21:00:16.25 315.06769670	(J2000)
DEC	+00:45:14.4 0.75399961	
Med Mag	18.00 ± 0.69	R-band
Ref Mag	17.95 ± 0.01	R-band
Distance	42.8"	
Offset Star S3 (purple circle)		
RA	21:00:17.04 315.07099589	(J2000)
DEC	+00:43:56.0 0.73222374	
Med Mag	14.75 ± 0.65	R-band
Ref Mag	14.75 ± 0.01	R-band
Distance	66.5"	

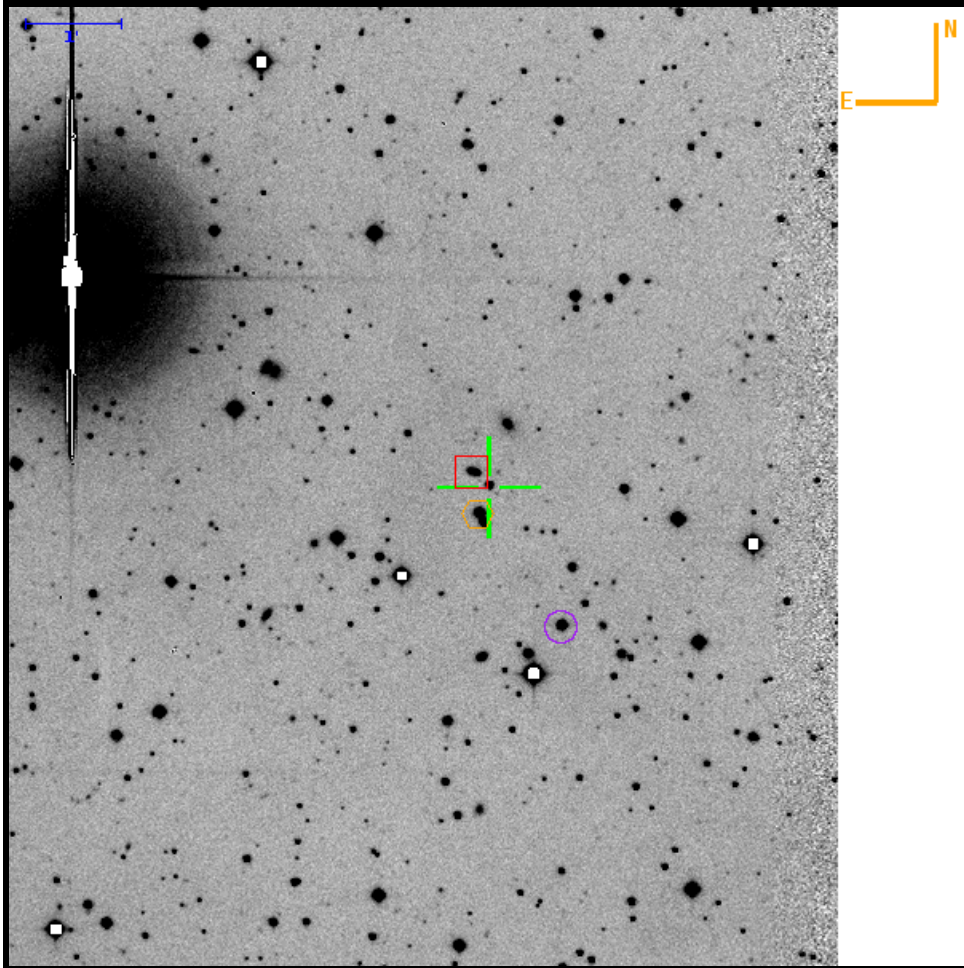
Theoretical 5σ limiting magnitude: 23.50. Filter: R. PTF field: 02 / 022683 / 05.

		To			
		Target	box	hex	circle
From	Target	0	29.32" W 24.95" N	32.00" E 28.43" N	43.88" E 49.96" S
	box	29.32" E 24.95" S	0	61.32" E 3.49" N	73.20" E 74.91" S
	hex	32.00" W 28.43" S	61.32" W 3.49" S	0	11.88" E 78.39" S
	circle	43.88" W 49.96" N	73.20" W 74.91" N	11.88" W 78.39" N	0



Finding Chart for PTFS1121aq

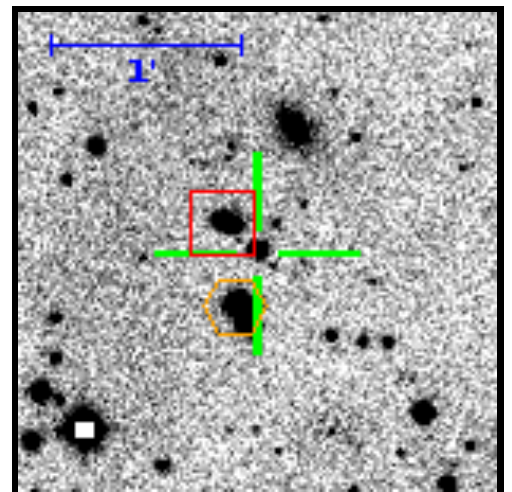
RA=21:08:46.44 DEC=-03:50:32.6



Target (green cross)		
RA	21:08:46.44 317.19349400	(J2000)
DEC	-03:50:32.6 -3.84239000	
Med Mag	17.65 ± 0.98	R-band
Offset Star S1 (red box)		
RA	21:08:47.12 317.19631363	(J2000)
DEC	-03:50:23.4 -3.83982720	
Med Mag	17.86 ± 0.05	R-band
Ref Mag	17.79 ± 0.01	R-band
Distance	13.7"	
Offset Star S2 (orange hex)		
RA	21:08:46.88 317.19531931	(J2000)
DEC	-03:50:49.5 -3.84709628	
Med Mag	15.45 ± nan	R-band
Ref Mag	15.68 ± 0.02	R-band
Distance	18.2"	
Offset Star S3 (purple circle)		
RA	21:08:43.38 317.18074899	(J2000)
DEC	-03:52:00.5 -3.86679585	
Med Mag	15.93 ± 0.02	R-band
Ref Mag	15.93 ± 0.02	R-band
Distance	99.1"	

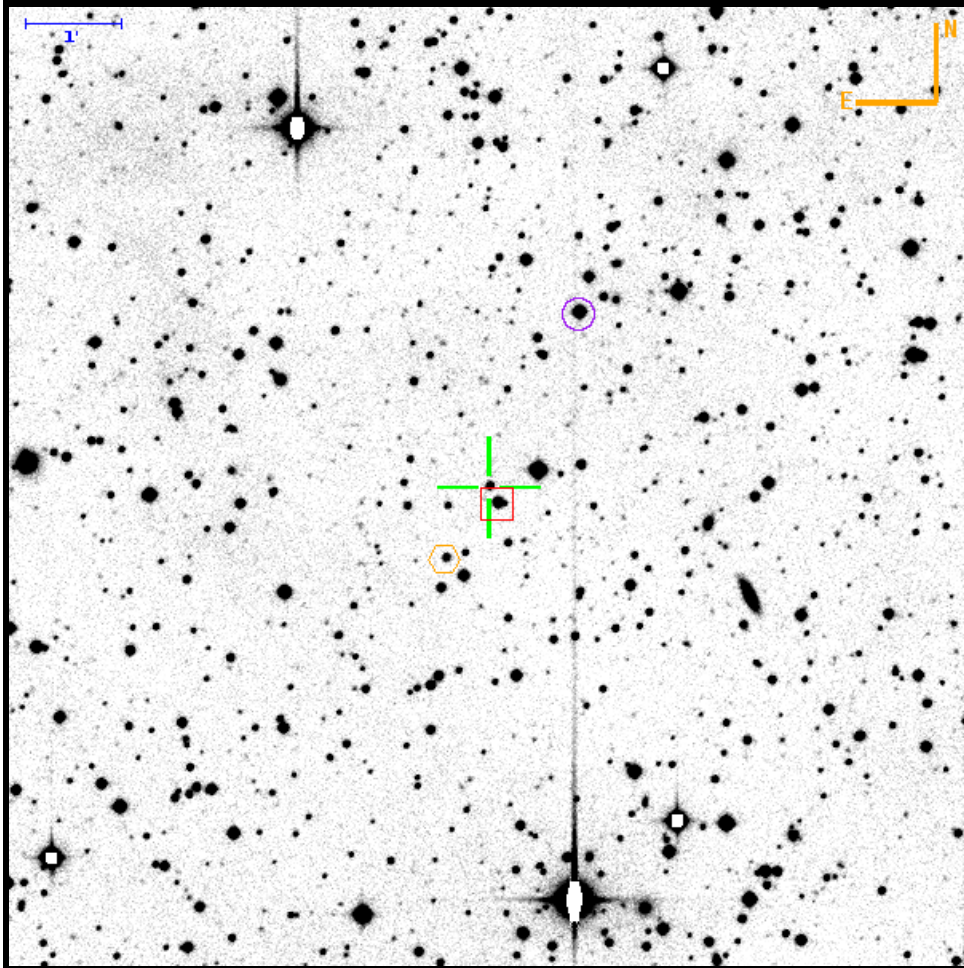
Theoretical 5σ limiting magnitude: 22.93. Filter: R. PTF field: 02 / 002579 / 09.

		To			
		Target	box	hex	circle
From	Target	0	10.13" E 9.23" N	6.56" E 16.94" S	45.78" W 87.86" S
	box	10.13" W 9.23" S	0	3.57" W 26.17" S	55.91" W 97.09" S
	hex	6.56" W 16.94" N	3.57" E 26.17" N	0	52.33" W 70.92" S
	circle	45.78" E 87.86" N	55.91" E 97.09" N	52.33" E 70.92" N	0



Finding Chart for PTFS1121at

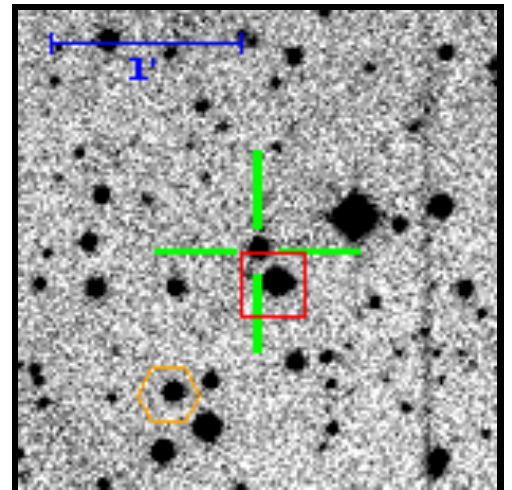
RA=21:09:50.47 DEC=+13:48:39.5



Target (green cross)		
RA	21:09:50.47 317.46031000	(J2000)
DEC	+13:48:39.5 13.81097700	
Med Mag	17.80 ± 0.80	R-band
Ref Mag	17.79 ± 0.02	R-band
Offset Star S1 (red box)		
RA	21:09:50.12 317.45883304	(J2000)
DEC	+13:48:28.9 13.80802885	
Med Mag	16.27 ± 0.01	R-band
Ref Mag	16.27 ± 0.01	R-band
Distance	11.8"	
Offset Star S2 (orange hex)		
RA	21:09:52.35 317.46812471	(J2000)
DEC	+13:47:53.9 13.79830911	
Med Mag	17.86 ± 0.04	R-band
Ref Mag	17.87 ± 0.02	R-band
Distance	53.2"	
Offset Star S3 (purple circle)		
RA	21:09:46.62 317.44427069	(J2000)
DEC	+13:50:29.7 13.84159180	
Med Mag	15.35 ± 0.01	R-band
Ref Mag	15.35 ± 0.01	R-band
Distance	123.7"	

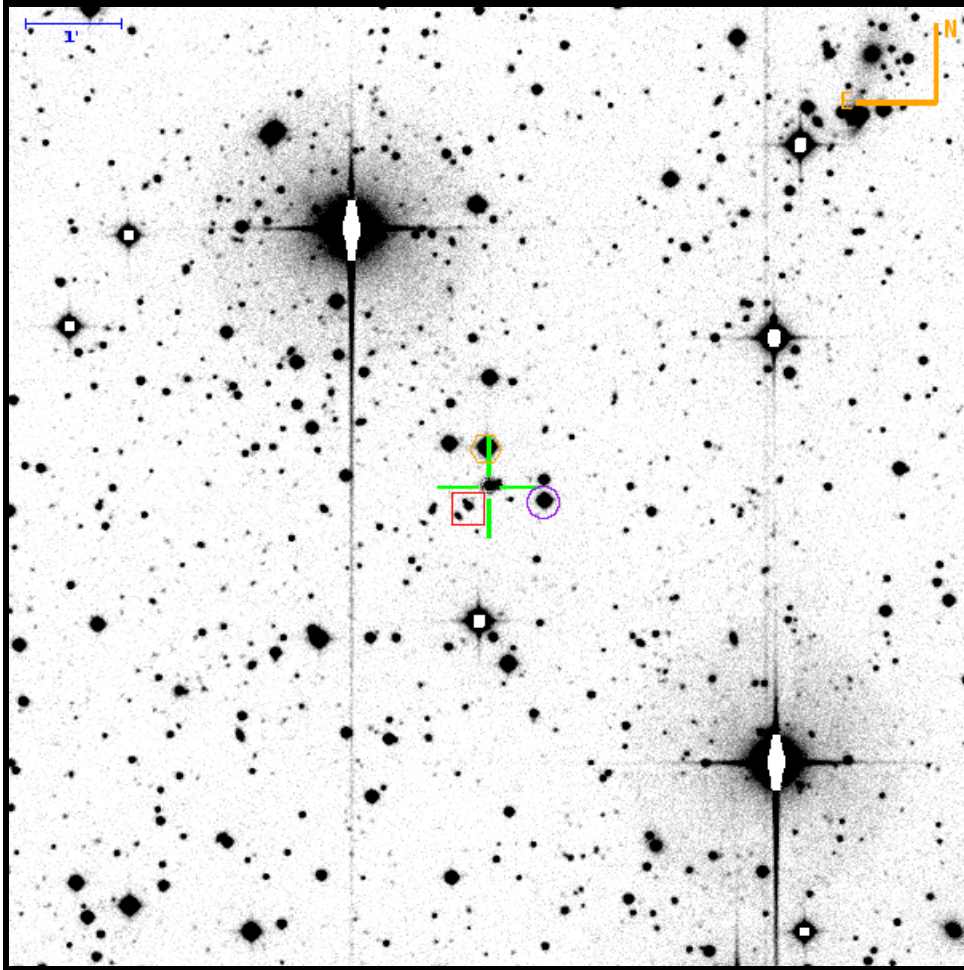
Theoretical 5 σ limiting magnitude: 22.48. Filter: R. PTF field: 02 / 003413 / 11.

		To			
		Target	box	hex	circle
From	Target	0	5.16" W 10.61" S	27.32" E 45.60" S	56.07" W 110.21" N
	box	5.16" E 10.61" N	0	32.48" E 34.99" S	50.91" W 120.83" N
	hex	27.32" W 45.60" N	32.48" W 34.99" N	0	83.40" W 155.82" N
	circle	56.06" E 110.21" S	50.90" E 120.83" S	83.38" E 155.82" S	0



Finding Chart for PTFS1121b

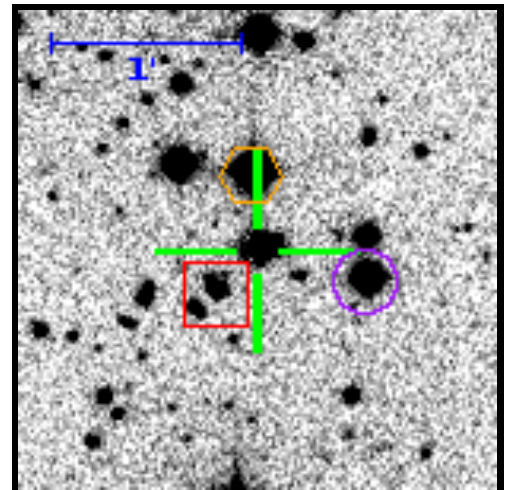
RA=21:30:24.63 DEC=-02:59:17.6



Theoretical 5 σ limiting magnitude: 23.47. Filter: R. PTF field: 02 / 002581 / 00.

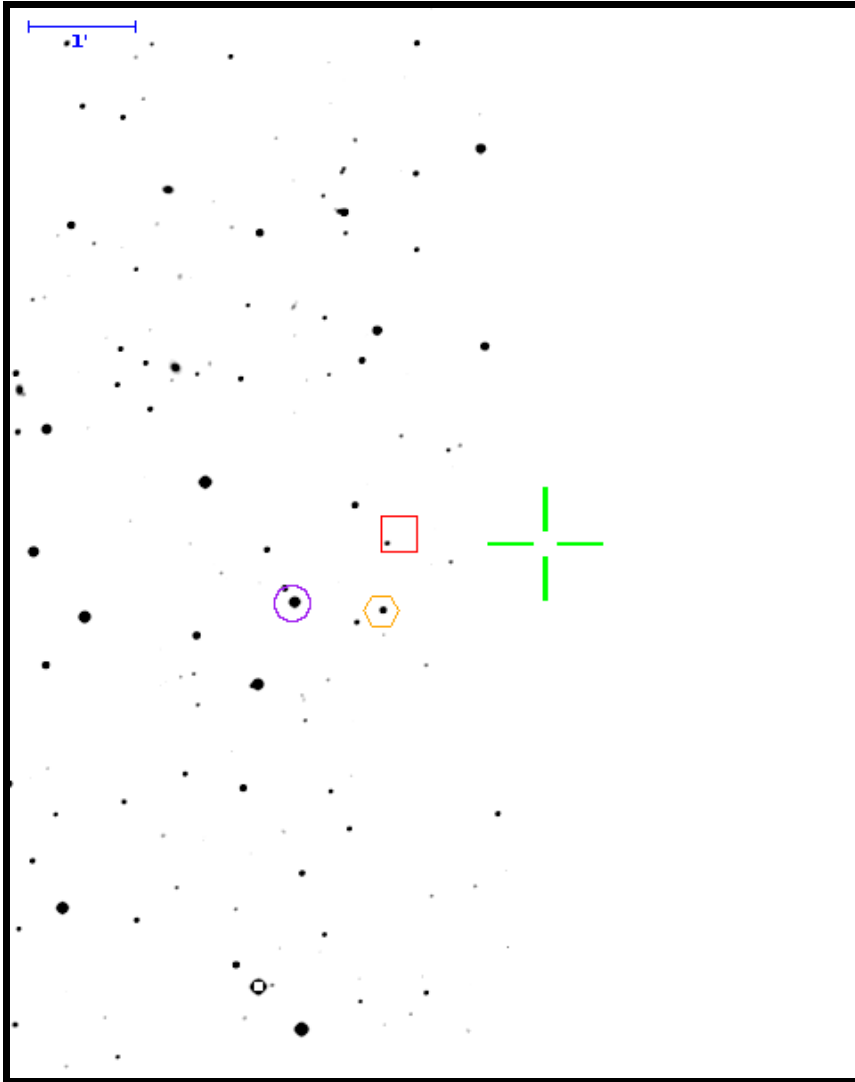
Target (green cross)		
RA	21:30:24.63 322.60263000	(J2000)
DEC	-02:59:17.6 -2.98822100	
Med Mag	17.08 \pm 0.49	R-band
Ref Mag	17.08 \pm 0.01	R-band
Offset Star S1 (red box)		
RA	21:30:25.48 322.60618567	(J2000)
DEC	-02:59:30.8 -2.99190016	
Med Mag	18.38 \pm 0.08	R-band
Ref Mag	18.34 \pm 0.01	R-band
Distance	18.4"	
Offset Star S2 (orange hex)		
RA	21:30:24.71 322.60295217	(J2000)
DEC	-02:58:53.4 -2.98149515	
Med Mag	14.35 \pm 0.01	R-band
Ref Mag	14.35 \pm 0.01	R-band
Distance	24.2"	
Offset Star S3 (purple circle)		
RA	21:30:22.29 322.59287796	(J2000)
DEC	-02:59:27.3 -2.99090670	
Med Mag	15.36 \pm 0.01	R-band
Ref Mag	15.36 \pm 0.01	R-band
Distance	36.4"	

		To			
		Target	box	hex	circle
From	Target	0	12.78" E 13.24" S	1.16" E 24.21" N	35.06" W 9.67" S
	box	12.78" W 13.24" N	0	11.62" W 37.46" N	47.84" W 3.58" N
	hex	1.16" W 24.21" S	11.62" E 37.46" S	0	36.22" W 33.88" S
	circle	35.06" E 9.67" N	47.84" E 3.58" S	36.22" E 33.88" N	0



Finding Chart for PTFS1122u

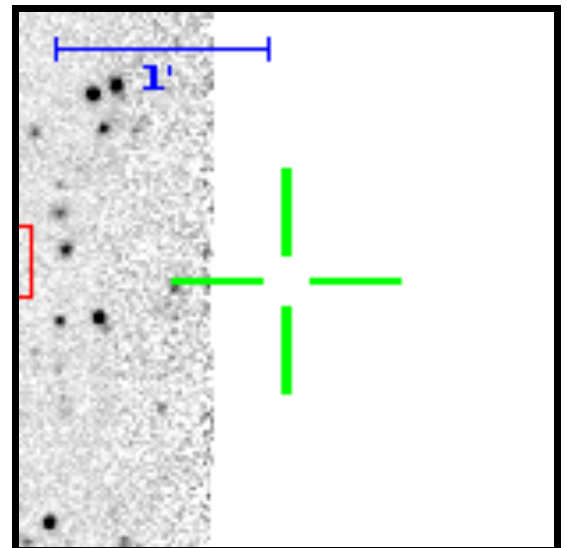
RA=22:05:53.99 DEC=+11:55:53.7



Target (green cross)		
RA	22:05:53.99 331.47494000	(J2000)
DEC	+11:55:53.7 11.93157500	
Offset Star S1 (red box)		
RA	22:05:59.63 331.49845136	(J2000)
DEC	+11:55:58.7 11.93297191	
Med Mag	17.62 ± nan	R-band
Distance	83.0"	
Offset Star S2 (orange hex)		
RA	22:06:00.29 331.50120693	(J2000)
DEC	+11:55:15.2 11.92088755	
Med Mag	17.71 ± 0.03	R-band
Ref Mag	17.70 ± 0.01	R-band
Distance	100.2"	
Offset Star S3 (purple circle)		
RA	22:06:03.71 331.51545066	(J2000)
DEC	+11:55:19.6 11.92211105	
Med Mag	15.63 ± 0.03	R-band
Ref Mag	15.64 ± 0.01	R-band
Distance	146.7"	

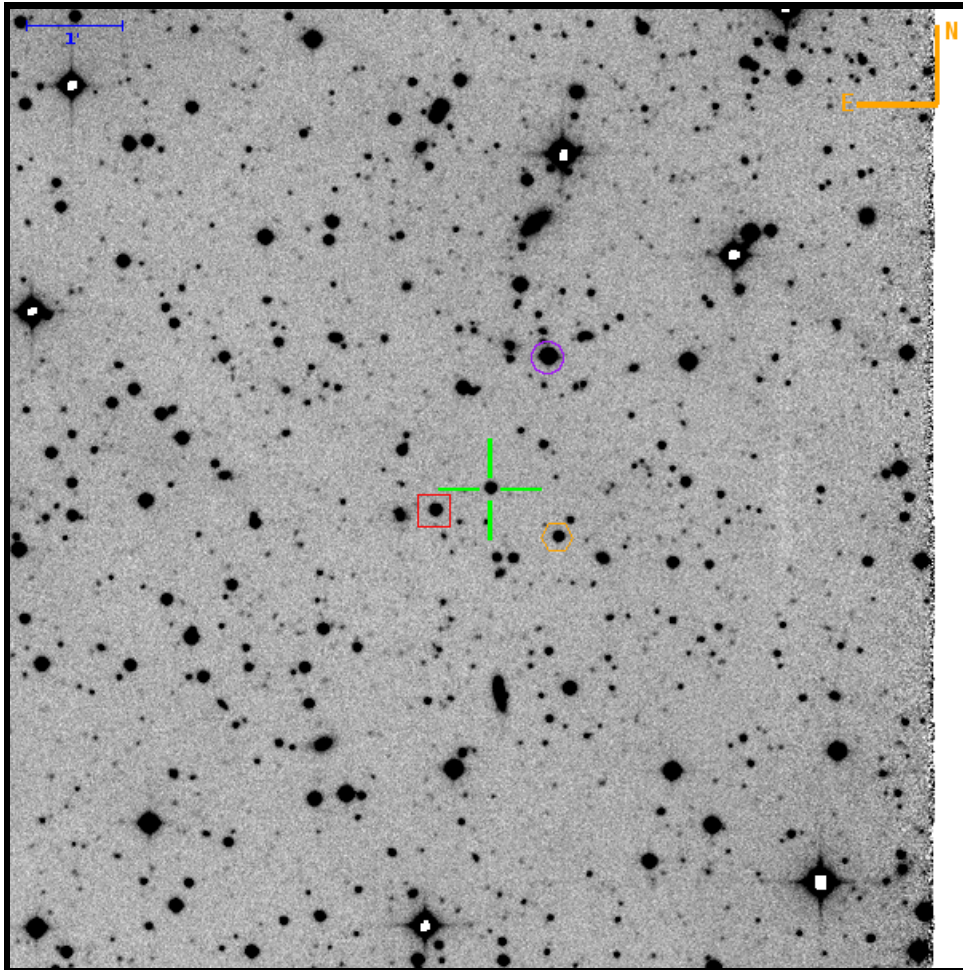
Theoretical 5 σ limiting magnitude: 23.50. Filter: R. PTF field:
02 / 003315 / 11.

		To			
		Target	box	hex	circle
From	Target	0	82.81" E 5.03" N	92.52" E 38.47" S	142.69" E 34.07" S
	box	82.81" W 5.03" S	0	9.71" E 43.50" S	59.87" E 39.10" S
	hex	92.52" W 38.47" N	9.71" W 43.50" N	0	50.17" E 4.40" N
	circle	142.69" W 34.07" N	59.88" W 39.10" N	50.17" W 4.40" S	0



Finding Chart for PTFS1122as

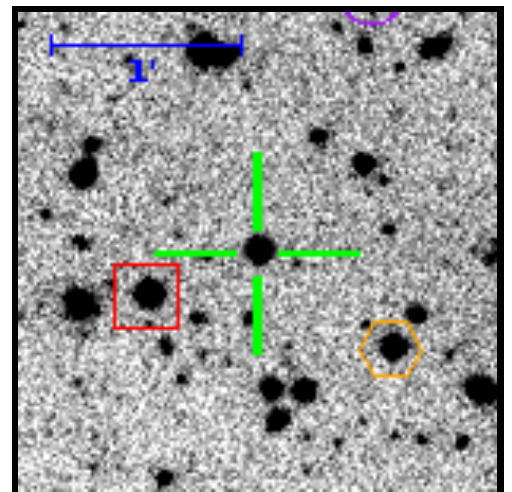
RA=22:21:44.79 DEC=+18:40:08.3



Target (green cross)		
RA	22:21:44.79 335.43661400	(J2000)
DEC	+18:40:08.3 18.66896100	
Med Mag	17.53 ± 0.15	R-band
Ref Mag	17.51 ± 0.01	R-band
Offset Star S1 (red box)		
RA	22:21:47.24 335.44684886	(J2000)
DEC	+18:39:54.7 18.66518677	
Med Mag	17.29 ± 0.03	R-band
Ref Mag	17.28 ± 0.01	R-band
Distance	37.5"	
Offset Star S2 (orange hex)		
RA	22:21:41.78 335.42409082	(J2000)
DEC	+18:39:37.4 18.66038462	
Med Mag	17.63 ± 0.04	R-band
Ref Mag	17.61 ± 0.01	R-band
Distance	52.7"	
Offset Star S3 (purple circle)		
RA	22:21:42.19 335.42578997	(J2000)
DEC	+18:41:31.5 18.69209409	
Med Mag	15.19 ± 0.01	R-band
Ref Mag	15.17 ± 0.00	R-band
Distance	91.1"	

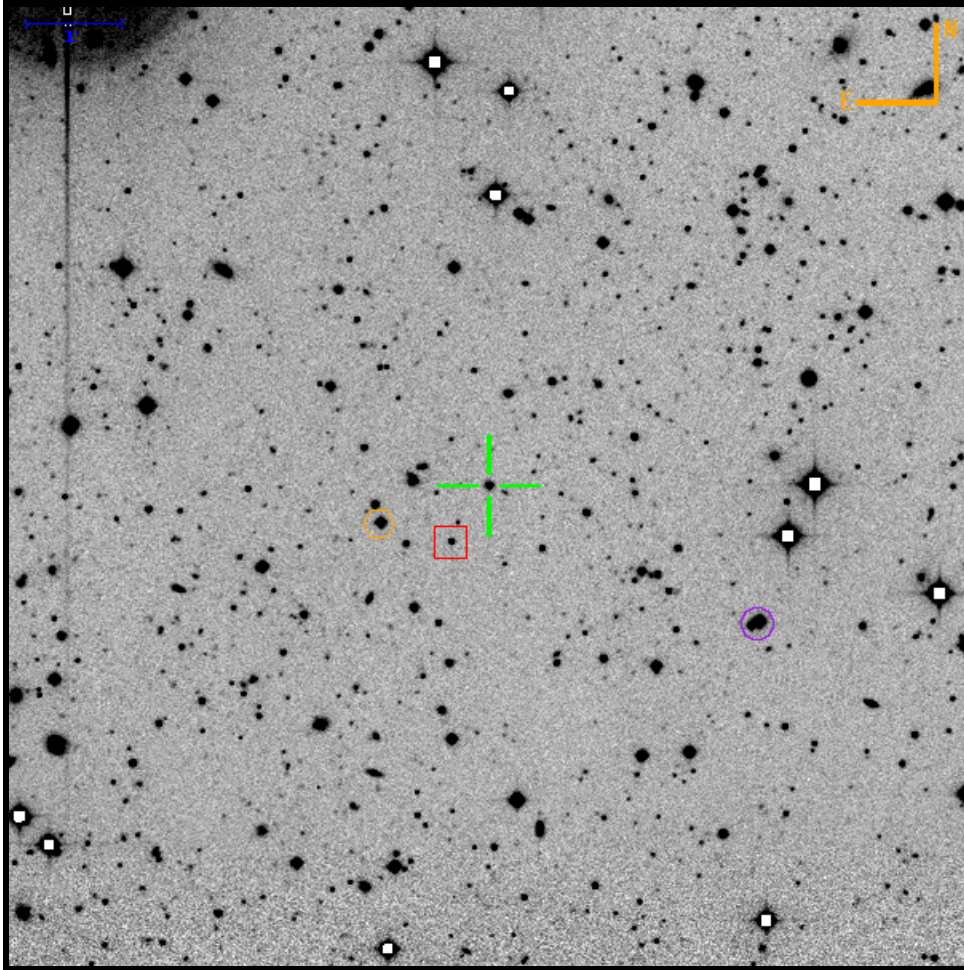
Theoretical 5σ limiting magnitude: 23.49. Filter: R. PTF field: 02 / 003620 / 07.

		To			
		Target	box	hex	circle
From	Target	0	34.91" E 13.59" S	42.71" W 30.87" S	36.92" W 83.28" N
	box	34.91" W 13.59" N	0	77.62" W 17.29" S	71.82" W 96.87" N
	hex	42.71" E 30.87" N	77.62" E 17.29" N	0	5.80" E 114.15" N
	circle	36.91" E 83.28" S	71.81" E 96.87" S	5.79" W 114.15" S	0



Finding Chart for PTFS1122t

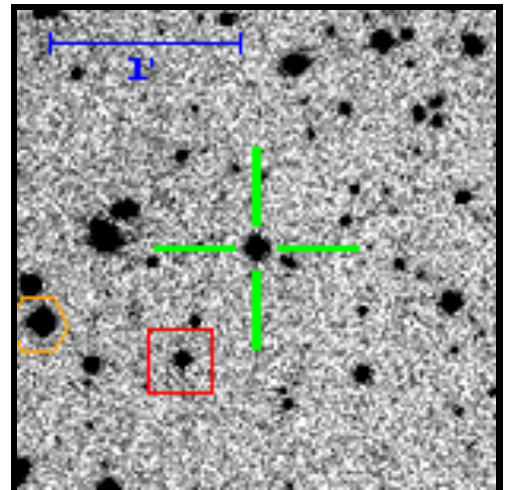
RA=22:45:00.73 DEC=+16:55:13.3



Target (green cross)		
RA	22:45:00.73 341.25303000	(J2000)
DEC	+16:55:13.3 16.92036900	
Med Mag	18.18 ± 0.61	R-band
Ref Mag	18.02 ± 0.05	R-band
Offset Star S1 (red box)		
RA	22:45:02.40 341.25999332	(J2000)
DEC	+16:54:37.9 16.91053861	
Med Mag	18.96 ± 0.08	R-band
Ref Mag	18.95 ± 0.01	R-band
Distance	42.8"	
Offset Star S2 (orange hex)		
RA	22:45:05.53 341.27302297	(J2000)
DEC	+16:54:49.8 16.91384482	
Med Mag	16.83 ± 0.03	R-band
Ref Mag	16.83 ± 0.01	R-band
Distance	72.8"	
Offset Star S3 (purple circle)		
RA	22:44:48.84 341.20348009	(J2000)
DEC	+16:53:47.7 16.89658169	
Med Mag	15.60 ± 0.05	R-band
Ref Mag	15.61 ± 0.01	R-band
Distance	190.9"	

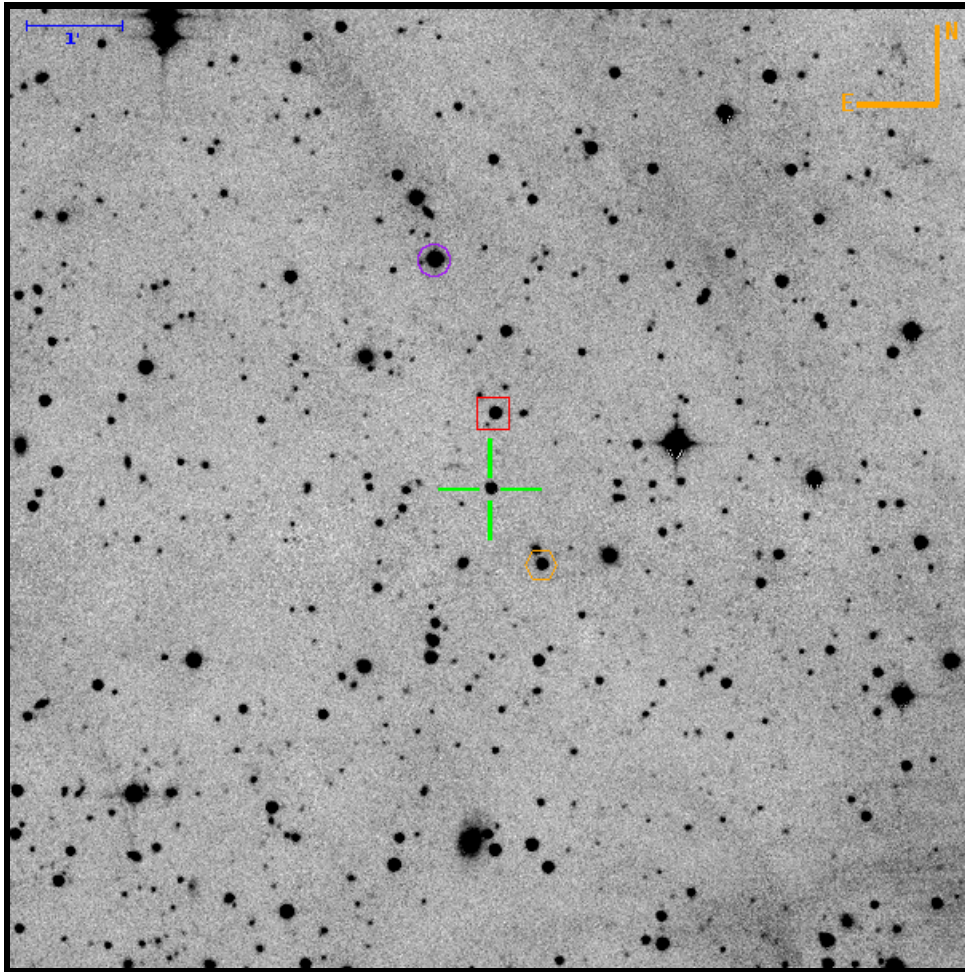
Theoretical 5σ limiting magnitude: 23.49. Filter: R. PTF field: 02 / 003521 / 04.

		To			
		Target	box	hex	circle
From	Target	0	23.98" E 35.39" S	68.86" E 23.49" S	170.66" W 85.63" S
	box	23.98" W 35.39" N	0	44.88" E 11.90" N	194.65" W 50.24" S
	hex	68.86" W 23.49" N	44.88" W 11.90" S	0	239.52" W 62.15" S
	circle	170.68" E 85.63" N	194.66" E 50.24" N	239.55" E 62.15" N	0



Finding Chart for PTFS1123ac

RA=23:38:48.67 DEC=+28:19:54.9



Target (green cross)		
RA	23:38:48.67 354.70279500	(J2000)
DEC	+28:19:54.9 28.33192100	
Med Mag	17.95 ± 0.98	R-band
Ref Mag	17.82 ± 0.09	R-band
Offset Star S1 (red box)		
RA	23:38:48.45 354.70188758	(J2000)
DEC	+28:20:42.1 28.34503407	
Med Mag	16.71 ± 0.07	R-band
Ref Mag	16.65 ± 0.09	R-band
Distance	47.3"	
Offset Star S2 (orange hex)		
RA	23:38:46.25 354.69270584	(J2000)
DEC	+28:19:07.4 28.31871425	
Med Mag	17.15 ± 0.08	R-band
Ref Mag	17.07 ± 0.09	R-band
Distance	57.3"	
Offset Star S3 (purple circle)		
RA	23:38:51.29 354.71369939	(J2000)
DEC	+28:22:18.5 28.37181341	
Med Mag	14.81 ± 0.06	R-band
Ref Mag	14.90 ± 0.09	R-band
Distance	147.7"	

Theoretical 5 σ limiting magnitude: 23.61. Filter: R. PTF field: 02 / 100160 / 00.

		To			
		Target	box	hex	circle
From	Target	0	2.88" W 47.21" N	31.97" W 47.54" S	34.55" E 143.61" N
	box	2.88" E 47.21" S	0	29.09" W 94.75" S	37.42" E 96.41" N
	hex	31.97" E 47.54" N	29.10" E 94.75" N	0	66.53" E 191.16" N
	circle	34.54" W 143.61" S	37.41" W 96.41" S	66.50" W 191.16" S	0

