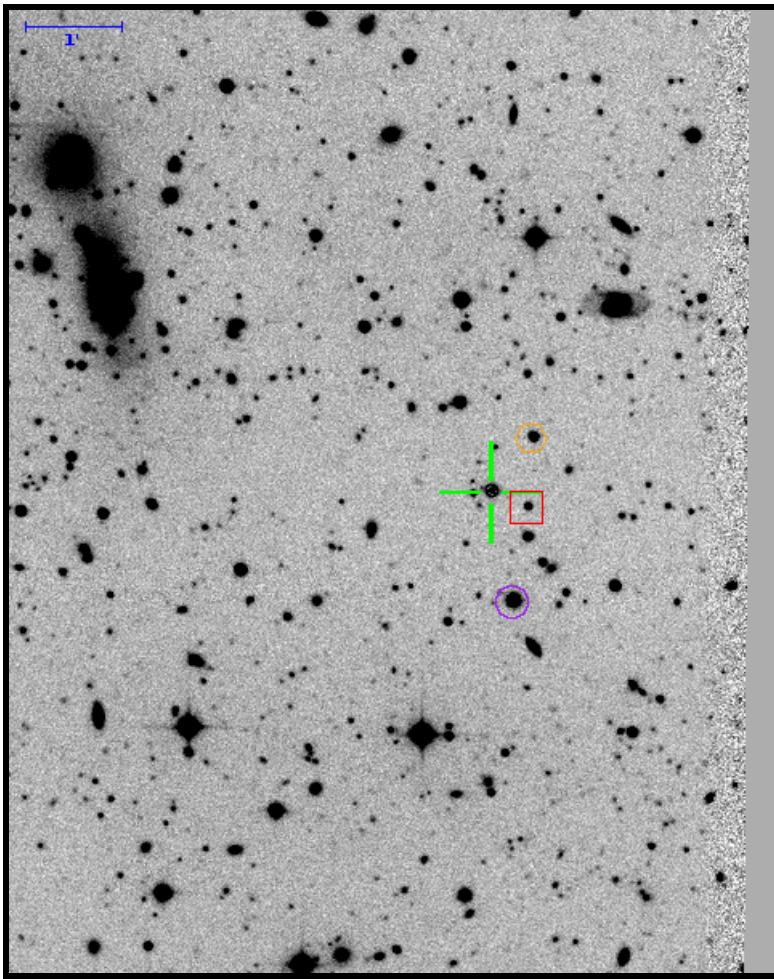


# Finding Chart for PTFS1116aq

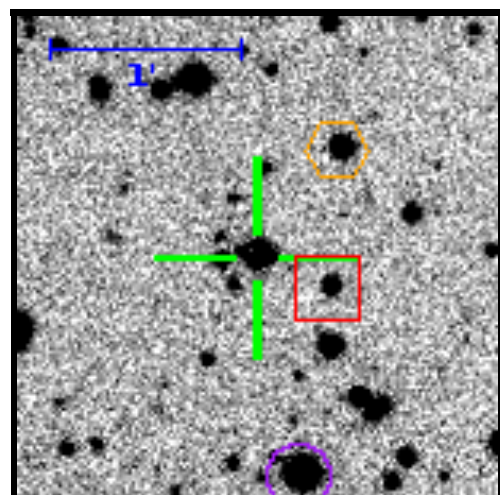
RA=16:00:03.70 DEC=+33:11:14.0



Theoretical 5 $\sigma$  limiting magnitude: 23.23. Filter: R. PTF field: 02 / 004160 / 02.

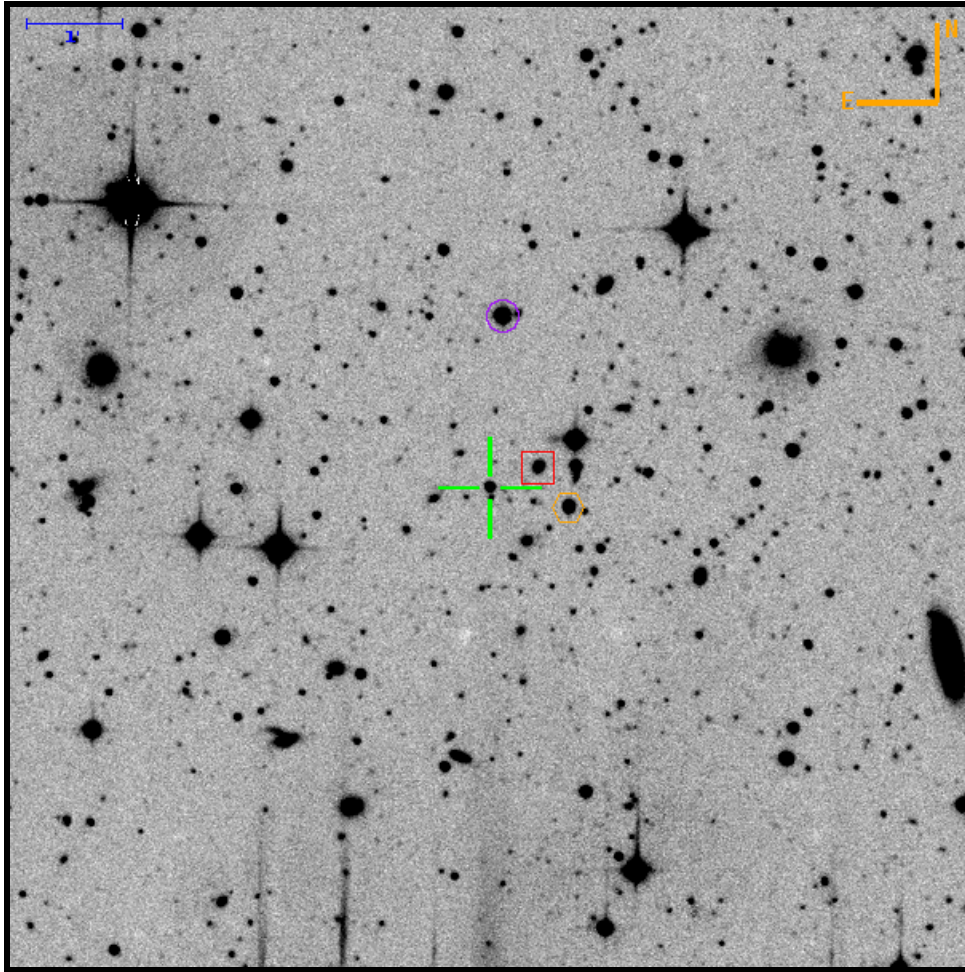
Target (green cross)		
RA	16:00:03.70 240.01542600	(J2000)
DEC	+33:11:14.0 33.18721400	
Med Mag	19.59 $\pm$ 1.48	R-band
Ref Mag	18.10 $\pm$ 0.02	R-band
Offset Star S1 (red box)		
RA	16:00:01.91 240.00796405	(J2000)
DEC	+33:11:04.1 33.18446533	
Med Mag	18.95 $\pm$ 0.09	R-band
Ref Mag	18.91 $\pm$ 0.02	R-band
Distance	24.6"	
Offset Star S2 (orange hex)		
RA	16:00:01.63 240.00677745	(J2000)
DEC	+33:11:47.6 33.19655552	
Med Mag	17.55 $\pm$ 0.03	R-band
Ref Mag	17.54 $\pm$ 0.02	R-band
Distance	42.5"	
Offset Star S3 (purple circle)		
RA	16:00:02.64 240.01101011	(J2000)
DEC	+33:10:05.6 33.16822738	
Med Mag	15.19 $\pm$ 0.01	R-band
Ref Mag	15.21 $\pm$ 0.02	R-band
Distance	69.6"	

		To			
		Target	box	hex	circle
From	Target	0	22.48" W 9.90" S	26.06" W 33.63" N	13.30" W 68.35" S
	box	22.48" E 9.90" N	0	3.58" W 43.52" N	9.18" E 58.46" S
	hex	26.05" E 33.63" S	3.57" E 43.52" S	0	12.75" E 101.98" S
	circle	13.31" E 68.35" N	9.18" W 58.46" N	12.75" W 101.98" N	0



# Finding Chart for PTFS1116a

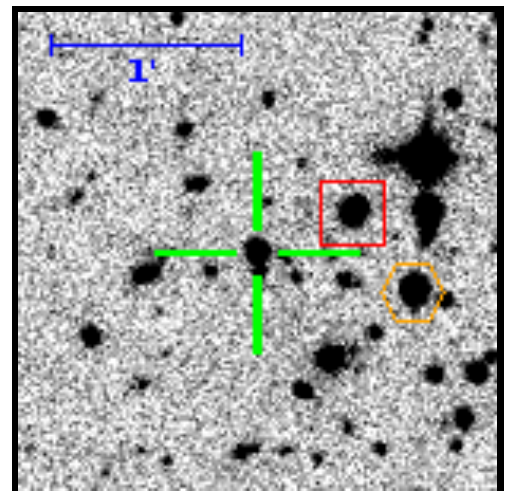
RA=16:25:01.76 DEC=+39:09:26.5



Target (green cross)		
RA	16:25:01.76 246.25731800	(J2000)
DEC	+39:09:26.5 39.15736000	
Med Mag	17.56 ± 0.16	R-band
Ref Mag	17.56 ± 0.03	R-band
Offset Star S1 (red box)		
RA	16:24:59.15 246.24644250	(J2000)
DEC	+39:09:39.1 39.16086373	
Med Mag	18.64 ± 0.12	R-band
Ref Mag	18.55 ± 0.03	R-band
Distance	32.9"	
Offset Star S2 (orange hex)		
RA	16:24:57.51 246.23961894	(J2000)
DEC	+39:09:13.9 39.15385857	
Med Mag	16.42 ± 0.04	R-band
Ref Mag	16.42 ± 0.03	R-band
Distance	51.0"	
Offset Star S3 (purple circle)		
RA	16:25:01.06 246.25440781	(J2000)
DEC	+39:11:13.6 39.18710722	
Med Mag	14.74 ± 0.03	R-band
Ref Mag	14.66 ± 0.03	R-band
Distance	107.4"	

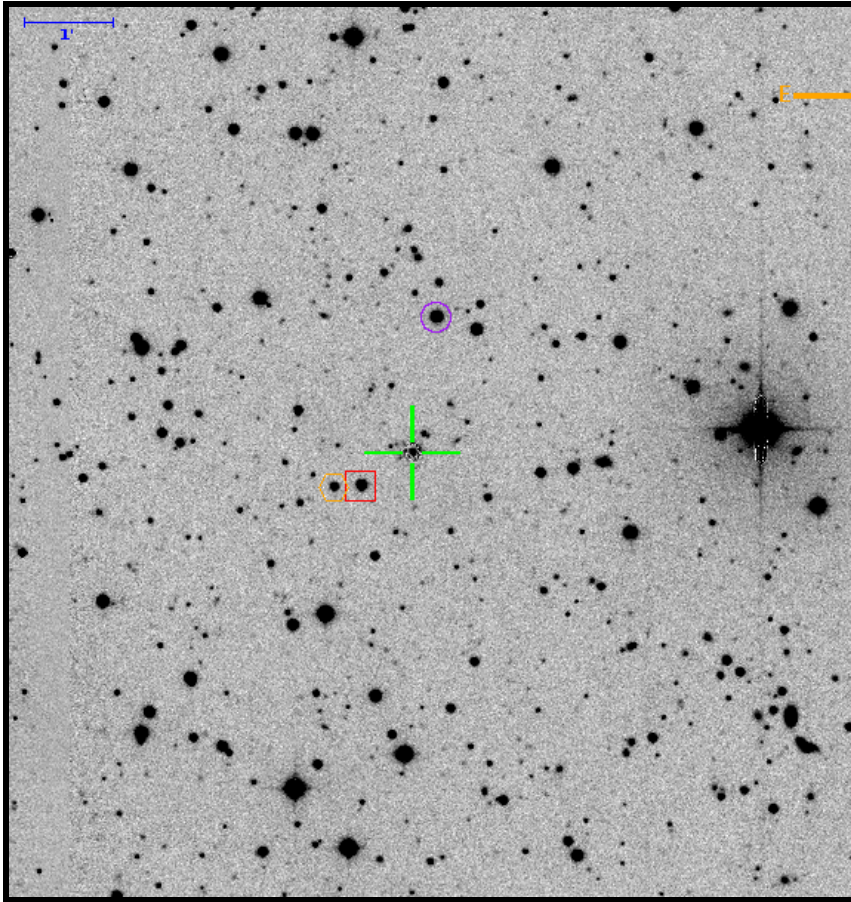
Theoretical 5σ limiting magnitude: 22.96. Filter: R. PTF field: 02 / 100199 / 06.

		To			
		Target	box	hex	circle
From	Target	0	30.36" W 12.61" N	49.41" W 12.61" S	8.12" W 107.09" N
	box	30.36" E 12.61" S	0	19.05" W 25.22" S	22.23" E 94.48" N
	hex	49.41" E 12.61" N	19.05" E 25.22" N	0	41.29" E 119.70" N
	circle	8.12" E 107.09" S	22.23" W 94.48" S	41.27" W 119.70" S	0



# Finding Chart for PTFS1116ae

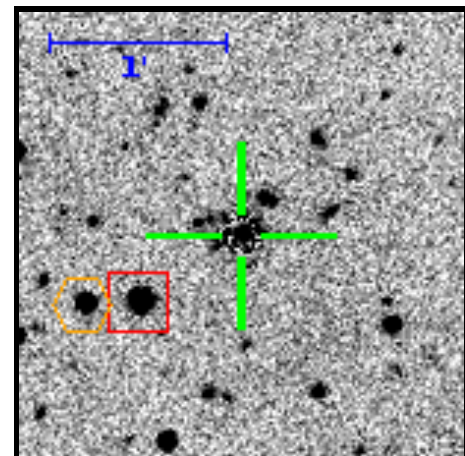
RA=16:25:20.30 DEC=+12:03:08.8



Target (green cross)		
RA	16:25:20.30 246.33460000	(J2000)
DEC	+12:03:08.8 12.05243500	
Med Mag	18.53 ± 0.92	R-band
Ref Mag	17.94 ± 0.04	R-band
Offset Star S1 (red box)		
RA	16:25:22.66 246.34439845	(J2000)
DEC	+12:02:46.3 12.04619509	
Med Mag	16.16 ± 0.02	R-band
Ref Mag	16.16 ± 0.04	R-band
Distance	41.2"	
Offset Star S2 (orange hex)		
RA	16:25:23.92 246.34965587	(J2000)
DEC	+12:02:45.3 12.04590322	
Med Mag	17.49 ± 0.02	R-band
Ref Mag	17.52 ± 0.04	R-band
Distance	58.0"	
Offset Star S3 (purple circle)		
RA	16:25:19.19 246.32997905	(J2000)
DEC	+12:04:39.8 12.07773561	
Med Mag	15.46 ± 0.02	R-band
Ref Mag	15.47 ± 0.04	R-band
Distance	92.5"	

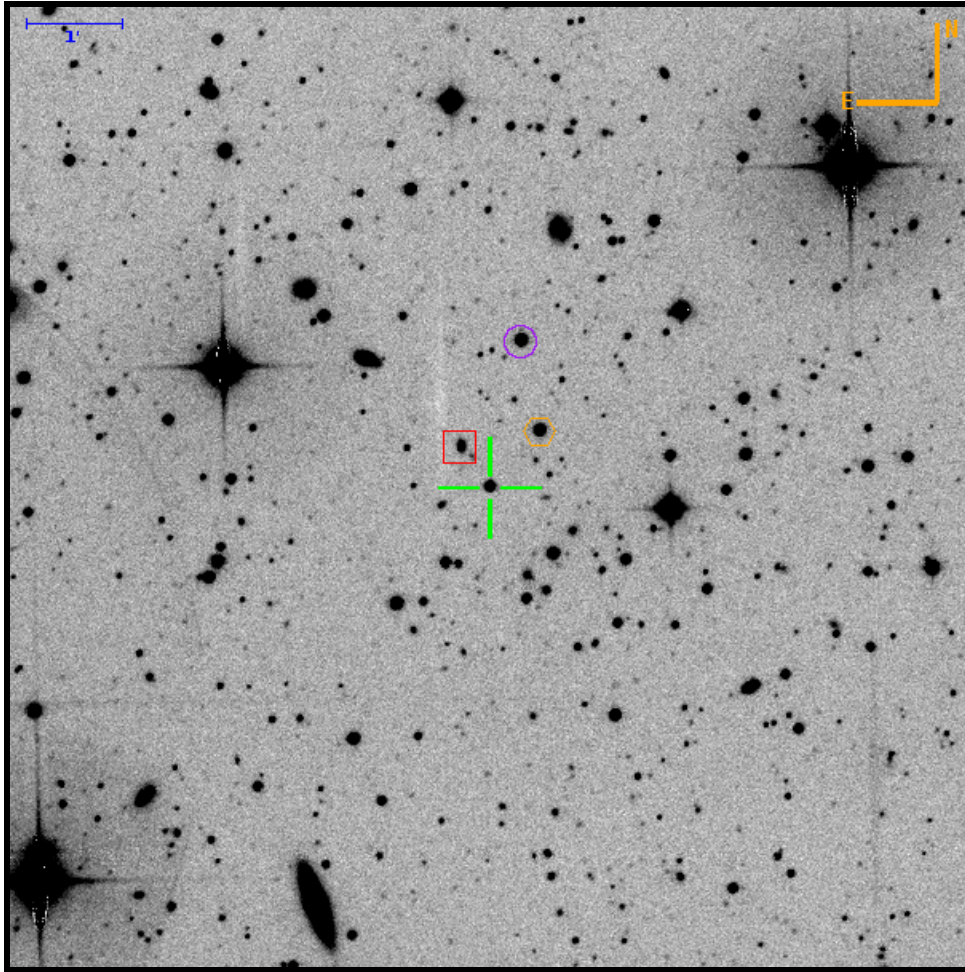
Theoretical 5σ limiting magnitude: 22.29. Filter: R. PTF field: 02 / 003291 / 08.

		To			
		Target	box	hex	circle
From	Target	0	34.50" E 22.46" S	53.01" E 23.51" S	16.27" W 91.08" N
	box	34.50" W 22.46" N	0	18.51" E 1.05" S	50.77" W 113.55" N
	hex	53.01" W 23.51" N	18.51" W 1.05" N	0	69.28" W 114.60" N
	circle	16.27" E 91.08" S	50.76" E 113.55" S	69.27" E 114.60" S	0



# Finding Chart for PTFS1116cc

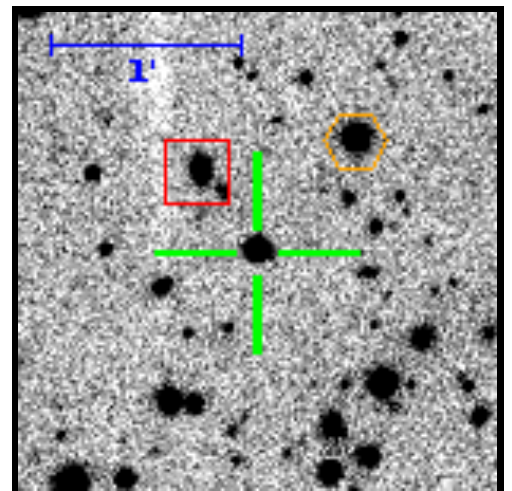
RA=16:52:42.97 DEC=+70:30:14.6



Target (green cross)		
RA	16:52:42.97 253.17902300	(J2000)
DEC	+70:30:14.6 70.50406300	
Med Mag	16.94 ± 0.40	R-band
Ref Mag	16.94 ± 0.10	R-band
Offset Star S1 (red box)		
RA	16:52:46.60 253.19417524	(J2000)
DEC	+70:30:39.9 70.51107438	
Med Mag	18.61 ± 0.12	R-band
Ref Mag	18.60 ± 0.10	R-band
Distance	31.1"	
Offset Star S2 (orange hex)		
RA	16:52:36.75 253.15311744	(J2000)
DEC	+70:30:50.1 70.51391798	
Med Mag	16.14 ± 0.04	R-band
Ref Mag	16.24 ± 0.10	R-band
Distance	47.2"	
Offset Star S3 (purple circle)		
RA	16:52:39.13 253.16305692	(J2000)
DEC	+70:31:46.3 70.52953019	
Med Mag	15.93 ± 0.04	R-band
Ref Mag	16.01 ± 0.10	R-band
Distance	93.7"	

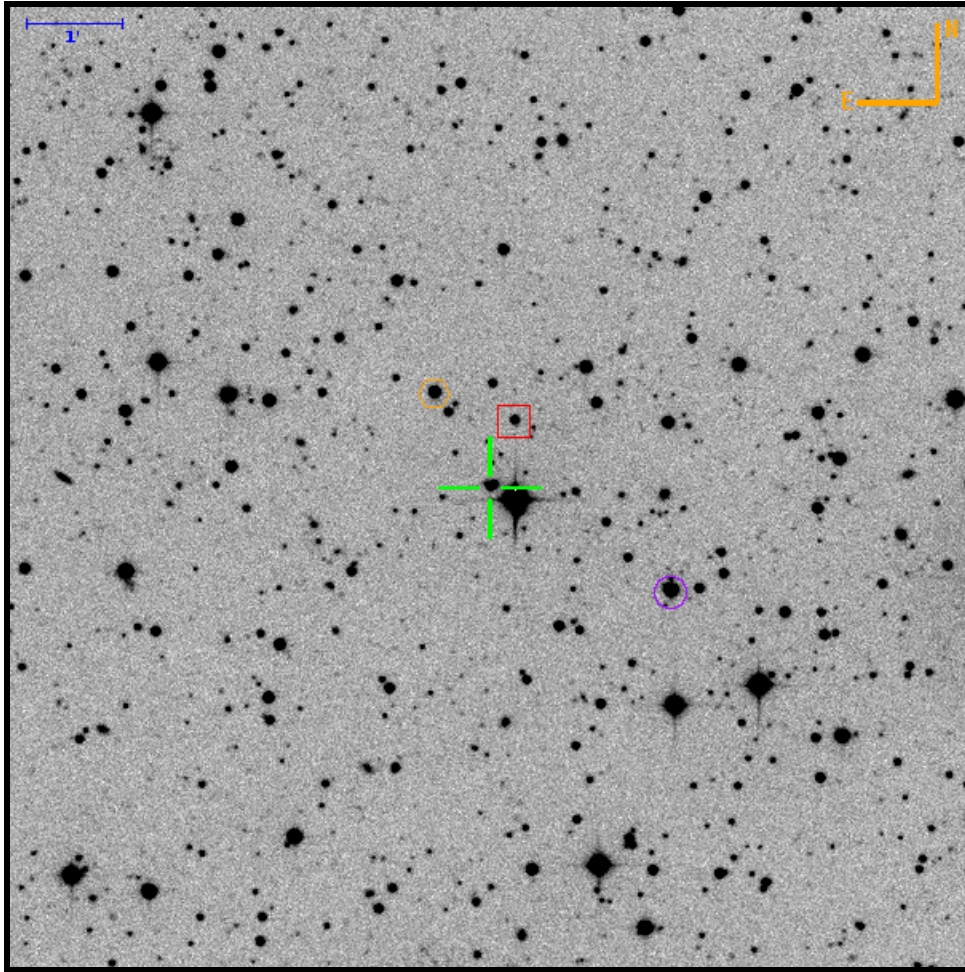
Theoretical 5σ limiting magnitude: 22.92. Filter: R. PTF field: 02 / 005246 / 09.

		To			
		Target	box	hex	circle
From	Target	0	18.20" E 25.24" N	31.12" W 35.48" N	19.18" W 91.68" N
	box	18.20" W 25.24" S	0	49.31" W 10.24" N	37.37" W 66.44" N
	hex	31.11" E 35.48" S	49.31" E 10.24" S	0	11.94" E 56.20" N
	circle	19.16" E 91.68" S	37.34" E 66.44" S	11.93" W 56.20" S	0



# Finding Chart for PTFS1116ci

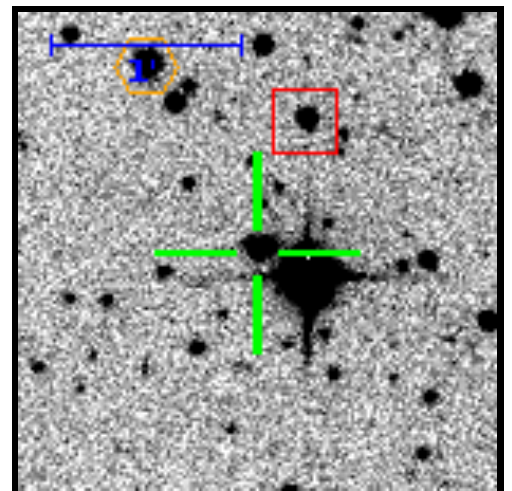
RA=16:53:59.05 DEC=+20:10:10.6



Target (green cross)		
RA	16:53:59.05 253.49605000	(J2000)
DEC	+20:10:10.6 20.16960800	
Med Mag	17.74 ± 0.70	R-band
Ref Mag	17.66 ± 0.01	R-band
Offset Star S1 (red box)		
RA	16:53:57.97 253.49153521	(J2000)
DEC	+20:10:52.3 20.18118406	
Med Mag	17.92 ± 0.04	R-band
Ref Mag	17.90 ± 0.01	R-band
Distance	44.4"	
Offset Star S2 (orange hex)		
RA	16:54:01.54 253.50640455	(J2000)
DEC	+20:11:09.6 20.18599416	
Med Mag	16.21 ± 0.03	R-band
Ref Mag	16.23 ± 0.01	R-band
Distance	68.6"	
Offset Star S3 (purple circle)		
RA	16:53:51.02 253.46256673	(J2000)
DEC	+20:09:05.6 20.15154477	
Med Mag	15.18 ± 0.02	R-band
Ref Mag	15.17 ± 0.01	R-band
Distance	130.5"	

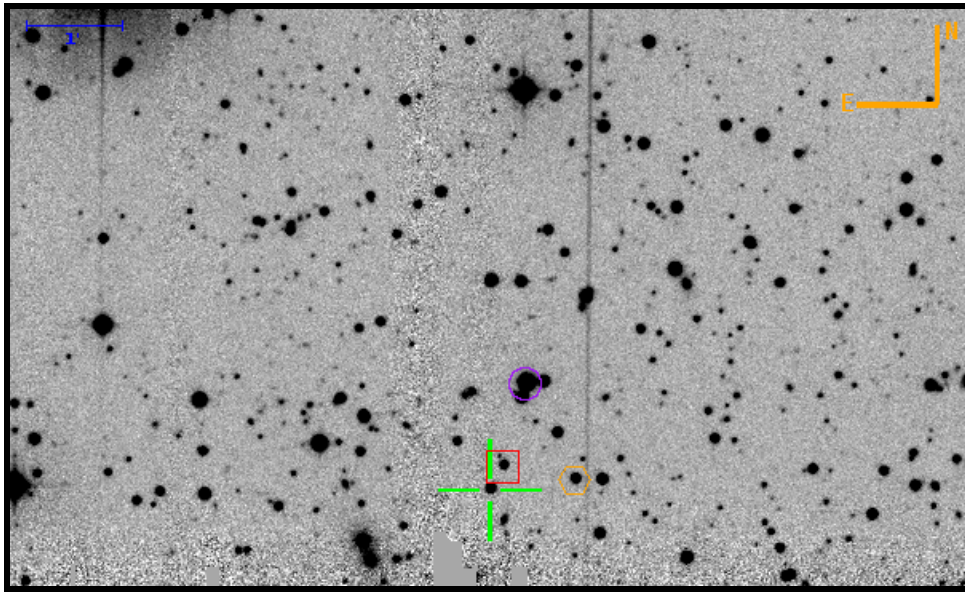
Theoretical 5σ limiting magnitude: 22.82. Filter: R. PTF field: 02 / 003597 / 02.

		To			
		Target	box	hex	circle
From	Target	0	15.26" W 41.67" N	34.99" E 58.99" N	113.15" W 65.03" S
	box	15.26" E 41.67" S	0	50.24" E 17.32" N	97.88" W 106.70" S
	hex	34.99" W 58.99" S	50.24" W 17.32" S	0	148.12" W 124.02" S
	circle	113.16" E 65.03" N	97.90" E 106.70" N	148.16" E 124.02" N	0



# Finding Chart for PTFS1116av

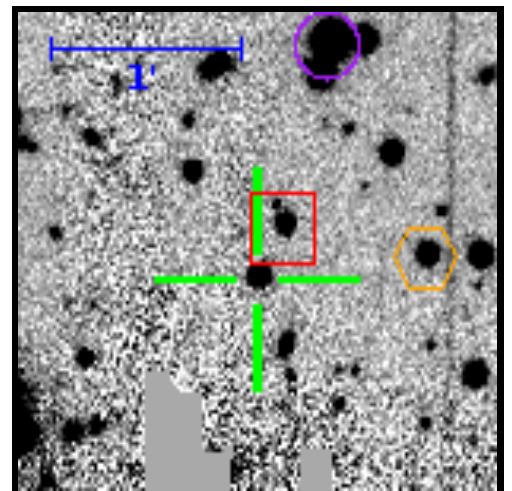
RA=16:56:58.13 DEC=+21:21:39.3



Theoretical 5σ limiting magnitude: 22.86. Filter: R. PTF field: 02 / 003696 / 01.

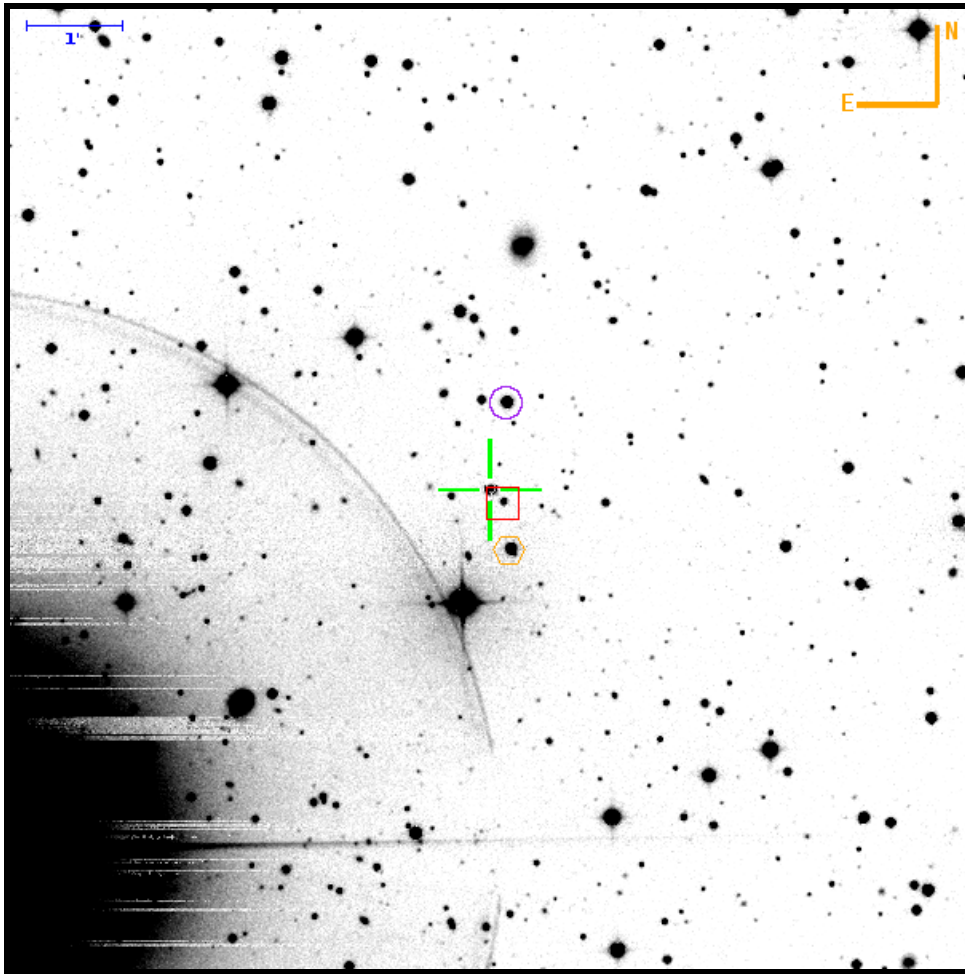
Target (green cross)		
RA	16:56:58.13 254.24221800	(J2000)
DEC	+21:21:39.3 21.36090700	
Med Mag	17.74 ± 0.57	R-band
Ref Mag	17.33 ± 0.02	R-band
Offset Star S1 (red box)		
RA	16:56:57.53 254.23972045	(J2000)
DEC	+21:21:53.9 21.36496939	
Med Mag	18.01 ± 0.11	R-band
Ref Mag	18.00 ± 0.02	R-band
Distance	16.9"	
Offset Star S2 (orange hex)		
RA	16:56:54.32 254.22633293	(J2000)
DEC	+21:21:45.4 21.36261309	
Med Mag	17.46 ± 0.04	R-band
Ref Mag	17.41 ± 0.02	R-band
Distance	53.6"	
Offset Star S3 (purple circle)		
RA	16:56:56.50 254.23542761	(J2000)
DEC	+21:22:45.6 21.37933173	
Med Mag	14.54 ± 0.10	R-band
Ref Mag	14.41 ± 0.02	R-band
Distance	70.1"	

		To			
		Target	box	hex	circle
From	Target	0	8.37" W 14.62" N	53.26" W 6.14" N	22.77" W 66.33" N
	box	8.37" E 14.62" S	0	44.88" W 8.48" S	14.39" W 51.70" N
	hex	53.26" E 6.14" S	44.88" E 8.48" N	0	30.49" E 60.19" N
	circle	22.76" E 66.33" S	14.39" E 51.70" S	30.49" W 60.19" S	0



# Finding Chart for PTFS1117q

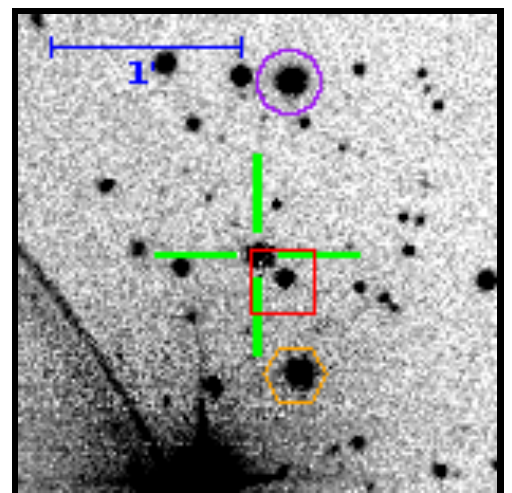
RA=17:48:27.88 DEC=+50:50:39.8



Target (green cross)		
RA	17:48:27.88 267.11618700	(J2000)
DEC	+50:50:39.8 50.84439100	
Med Mag	18.75 ± 1.41	R-band
Ref Mag	17.86 ± 0.08	R-band
Offset Star S1 (red box)		
RA	17:48:27.01 267.11253390	(J2000)
DEC	+50:50:31.5 50.84209300	
Med Mag	18.12 ± 0.04	R-band
Ref Mag	18.06 ± 0.08	R-band
Distance	11.7"	
Offset Star S2 (orange hex)		
RA	17:48:26.53 267.11054414	(J2000)
DEC	+50:50:02.1 50.83390375	
Med Mag	15.36 ± 0.07	R-band
Ref Mag	15.35 ± 0.08	R-band
Distance	39.9"	
Offset Star S3 (purple circle)		
RA	17:48:26.79 267.11162487	(J2000)
DEC	+50:51:33.8 50.85938776	
Med Mag	15.28 ± 0.06	R-band
Ref Mag	15.32 ± 0.08	R-band
Distance	55.0"	

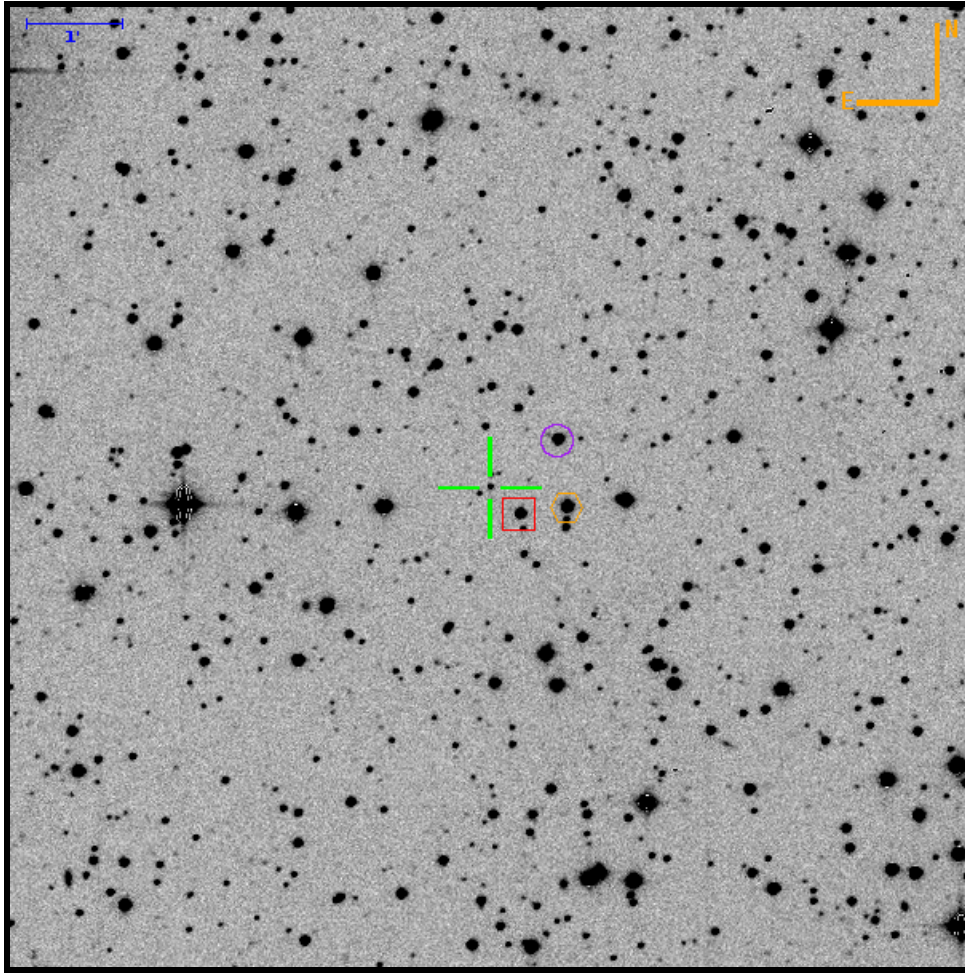
Theoretical 5σ limiting magnitude: 23.26. Filter: R. PTF field: 02 / 004790 / 04.

		To			
		Target	box	hex	circle
From	Target	0	8.30" W 8.27" S	12.83" W 37.75" S	10.37" W 53.99" N
	box	8.30" E 8.27" N	0	4.52" W 29.48" S	2.07" W 62.26" N
	hex	12.83" E 37.75" N	4.52" E 29.48" N	0	2.46" E 91.74" N
	circle	10.37" E 53.99" S	2.07" E 62.26" S	2.46" W 91.74" S	0



# Finding Chart for PTFS1118x

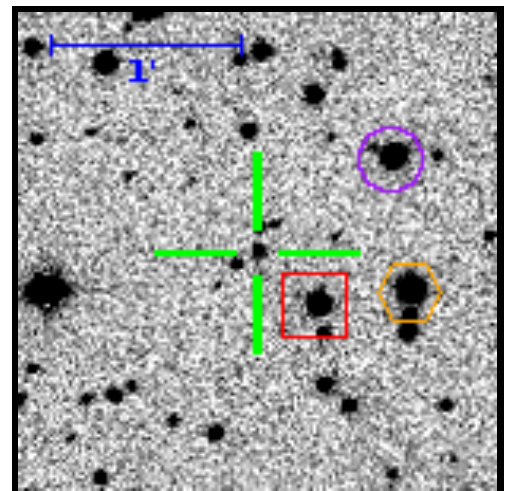
RA=18:44:39.17 DEC=+43:22:28.1



Target (green cross)		
RA	18:44:39.17 281.16320000	(J2000)
DEC	+43:22:28.1 43.37447100	
Med Mag	16.35 ± 1.84	R-band
Ref Mag	18.87 ± 0.13	R-band
Offset Star S1 (red box)		
RA	18:44:37.46 281.15607344	(J2000)
DEC	+43:22:11.3 43.36979228	
Med Mag	15.79 ± 0.02	R-band
Ref Mag	15.37 ± 0.08	R-band
Distance	25.1"	
Offset Star S2 (orange hex)		
RA	18:44:34.77 281.14486406	(J2000)
DEC	+43:22:15.5 43.37097249	
Med Mag	14.84 ± 0.03	R-band
Ref Mag	14.42 ± 0.08	R-band
Distance	49.6"	
Offset Star S3 (purple circle)		
RA	18:44:35.27 281.14694170	(J2000)
DEC	+43:22:57.9 43.38274795	
Med Mag	15.50 ± 0.03	R-band
Ref Mag	15.06 ± 0.08	R-band
Distance	51.9"	

Theoretical 5σ limiting magnitude: 21.94. Filter: R. PTF field: 02 / 004581 / 08.

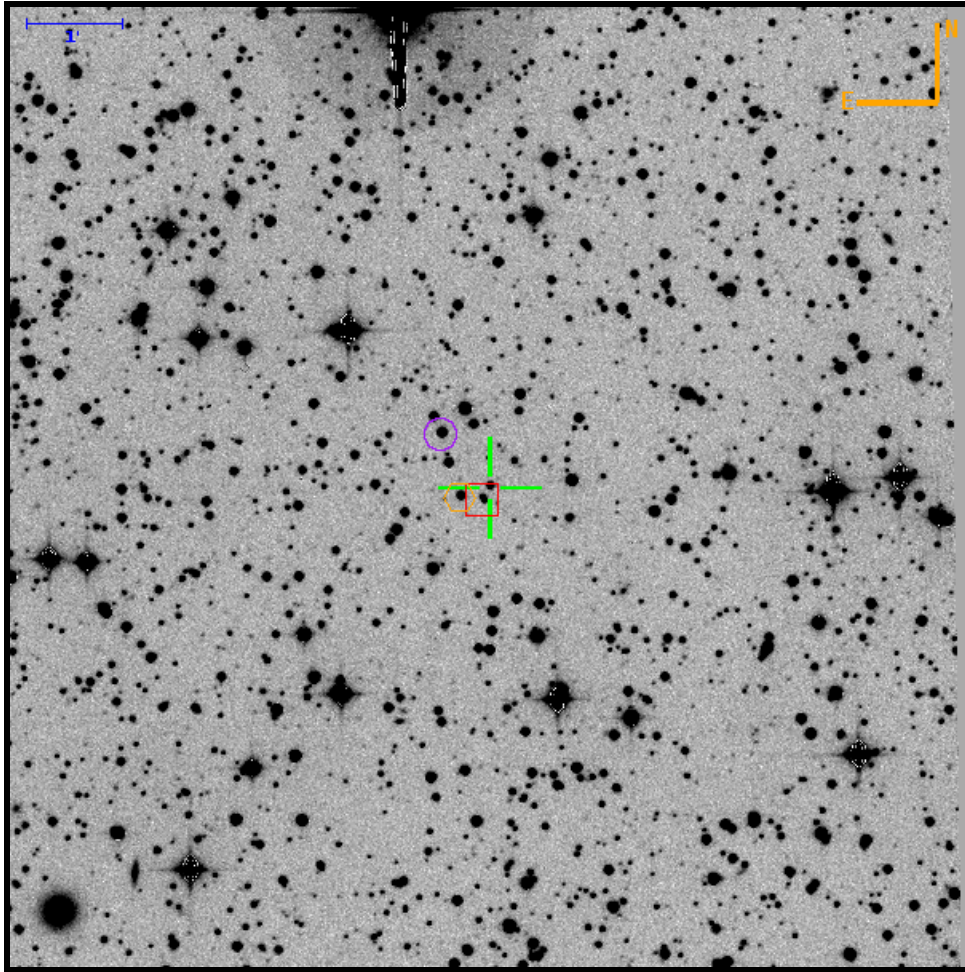
		To			
		Target	box	hex	circle
From	Target	0	18.65" W 16.84" S	47.98" W 12.59" S	42.54" W 29.80" N
	box	18.65" E 16.84" N	0	29.33" W 4.25" N	23.90" W 46.64" N
	hex	47.98" E 12.59" N	29.33" E 4.25" S	0	5.44" E 42.39" N
	circle	42.54" E 29.80" S	23.89" E 46.64" S	5.44" W 42.39" S	0





# Finding Chart for PTFS1119h

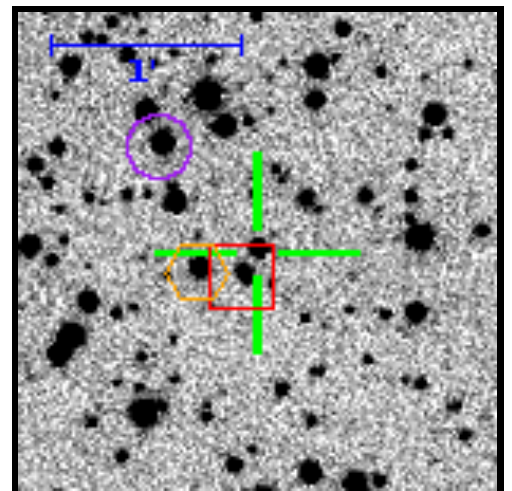
RA=19:28:56.45 DEC=+43:05:37.3



Theoretical 5 $\sigma$  limiting magnitude: 22.43. Filter: R. PTF field: 02 / 004583 / 10.

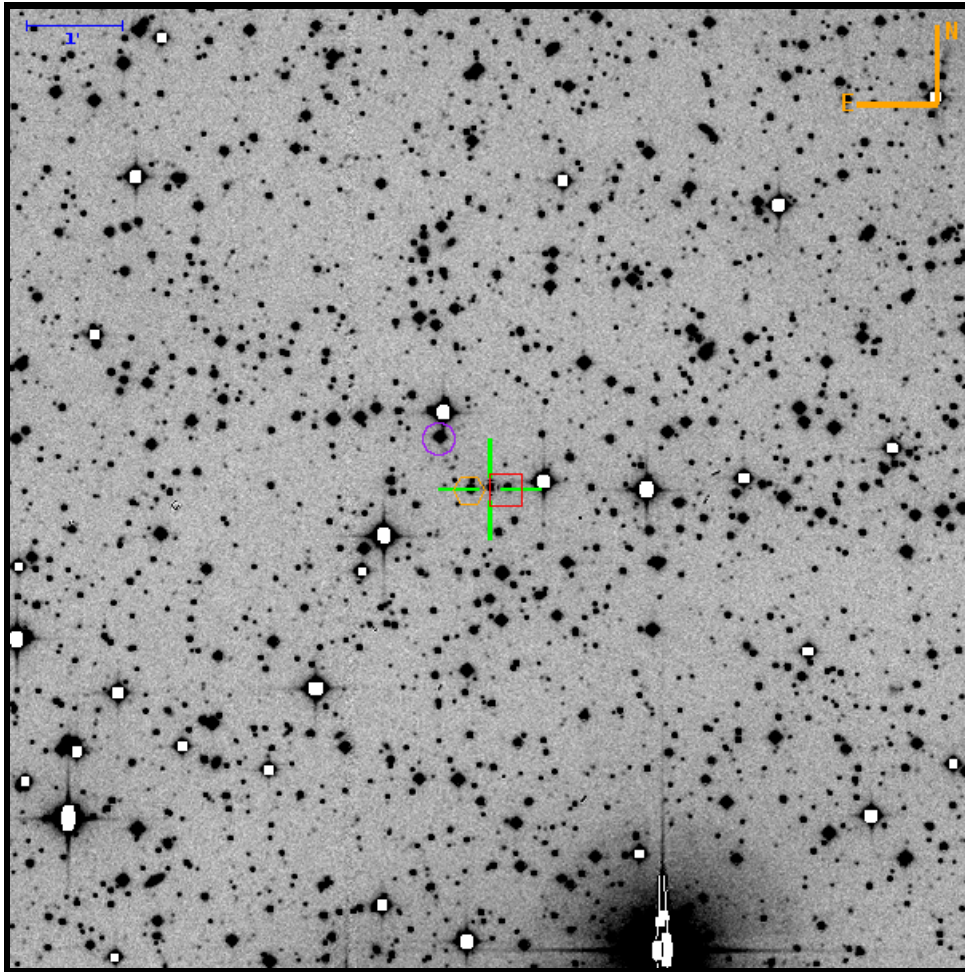
Target (green cross)		
RA	19:28:56.45 292.23521700	(J2000)
DEC	+43:05:37.3 43.09369800	
Med Mag	17.15 $\pm$ 0.92	R-band
Ref Mag	17.24 $\pm$ 0.04	R-band
Offset Star S1 (red box)		
RA	19:28:56.85 292.23686976	(J2000)
DEC	+43:05:29.4 43.09149304	
Med Mag	17.82 $\pm$ 0.03	R-band
Ref Mag	17.82 $\pm$ 0.04	R-band
Distance	9.0"	
Offset Star S2 (orange hex)		
RA	19:28:58.14 292.24225162	(J2000)
DEC	+43:05:31.1 43.09198342	
Med Mag	16.72 $\pm$ 0.01	R-band
Ref Mag	16.71 $\pm$ 0.04	R-band
Distance	19.5"	
Offset Star S3 (purple circle)		
RA	19:28:59.20 292.24667562	(J2000)
DEC	+43:06:10.7 43.10296439	
Med Mag	15.99 $\pm$ 0.06	R-band
Ref Mag	15.99 $\pm$ 0.04	R-band
Distance	44.9"	

		To			
		Target	box	hex	circle
From	Target	0	4.34" E 7.94" S	18.49" E 6.17" S	30.12" E 33.36" N
	box	4.35" W 7.94" N	0	14.15" E 1.77" N	25.78" E 41.30" N
	hex	18.49" W 6.17" N	14.15" W 1.77" S	0	11.63" E 39.53" N
	circle	30.12" W 33.36" S	25.77" W 41.30" S	11.63" W 39.53" S	0



# Finding Chart for PTFS1120ac

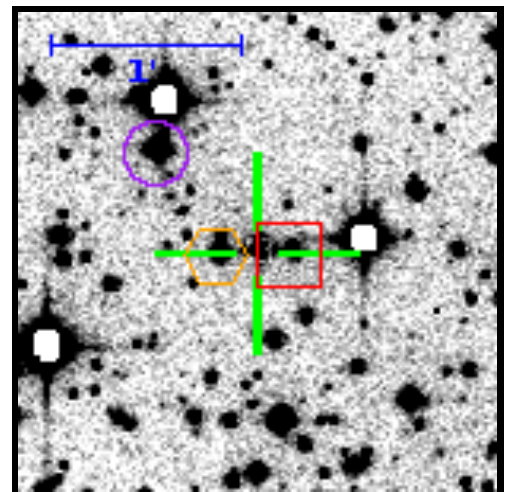
RA=20:32:42.44 DEC=+10:49:34.7



Target (green cross)		
RA	20:32:42.44 308.17682900	(J2000)
DEC	+10:49:34.7 10.82629400	
Med Mag	17.60 ± 0.81	R-band
Ref Mag	17.46 ± 0.04	R-band
Offset Star S1 (red box)		
RA	20:32:41.70 308.17374054	(J2000)
DEC	+10:49:34.7 10.82629646	
Med Mag	17.28 ± 0.57	R-band
Ref Mag	17.20 ± 0.02	R-band
Distance	10.9"	
Offset Star S2 (orange hex)		
RA	20:32:43.30 308.18042315	(J2000)
DEC	+10:49:33.7 10.82603209	
Med Mag	16.41 ± 0.54	R-band
Ref Mag	16.37 ± 0.02	R-band
Distance	12.7"	
Offset Star S3 (purple circle)		
RA	20:32:44.64 308.18597927	(J2000)
DEC	+10:50:06.6 10.83517207	
Med Mag	15.58 ± 0.01	R-band
Ref Mag	15.53 ± 0.02	R-band
Distance	45.5"	

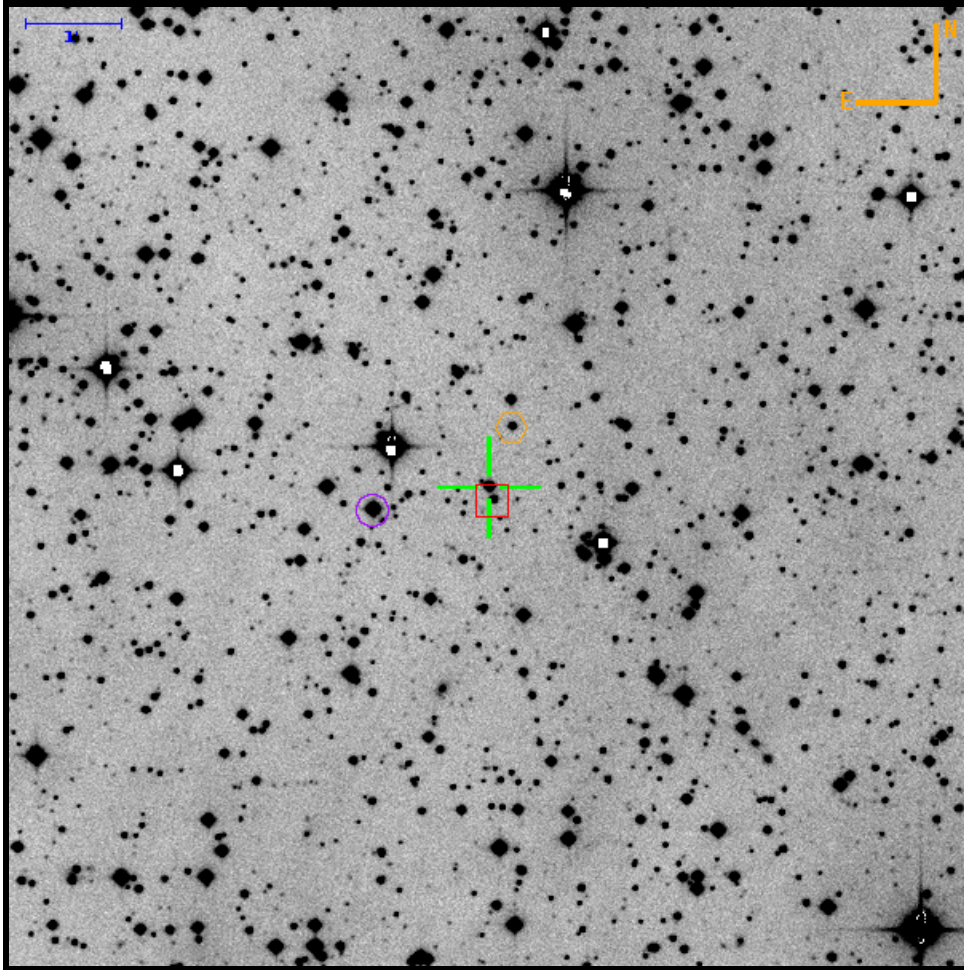
Theoretical 5 $\sigma$  limiting magnitude: 22.97. Filter: R. PTF field: 02 / 100170 / 04.

		To			
		Target	box	hex	circle
From	Target	0	10.92" W 0.01" N	12.71" E 0.94" S	32.35" E 31.96" N
	box	10.92" E 0.01" S	0	23.63" E 0.95" S	43.28" E 31.95" N
	hex	12.71" W 0.94" N	23.63" W 0.95" N	0	19.65" E 32.90" N
	circle	32.35" W 31.96" S	43.27" W 31.95" S	19.65" W 32.90" S	0



# Finding Chart for PTFS1121m

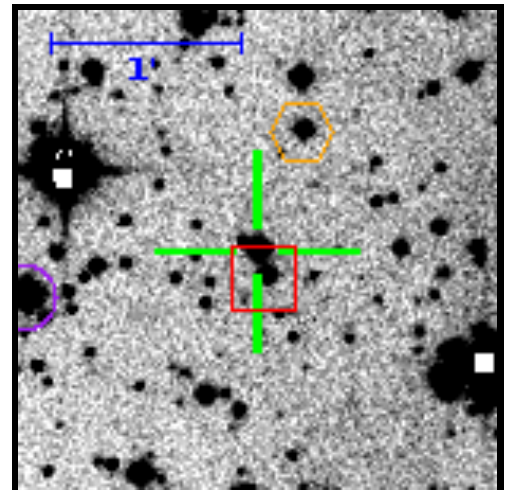
RA=21:03:06.60 DEC=+66:10:32.4



Target (green cross)		
RA	21:03:06.60 315.77751900	(J2000)
DEC	+66:10:32.4 66.17566900	
Med Mag	18.33 ± 1.16	R-band
Ref Mag	16.80 ± 0.10	R-band
Offset Star S1 (red box)		
RA	21:03:06.06 315.77524729	(J2000)
DEC	+66:10:24.4 66.17344304	
Med Mag	17.96 ± 0.05	R-band
Ref Mag	17.87 ± 0.01	R-band
Distance	8.7"	
Offset Star S2 (orange hex)		
RA	21:03:04.45 315.76853774	(J2000)
DEC	+66:11:11.0 66.18637564	
Med Mag	18.00 ± 0.05	R-band
Ref Mag	17.99 ± 0.01	R-band
Distance	40.7"	
Offset Star S3 (purple circle)		
RA	21:03:18.63 315.82763762	(J2000)
DEC	+66:10:15.1 66.17085170	
Med Mag	14.97 ± 0.02	R-band
Ref Mag	14.97 ± 0.01	R-band
Distance	74.9"	

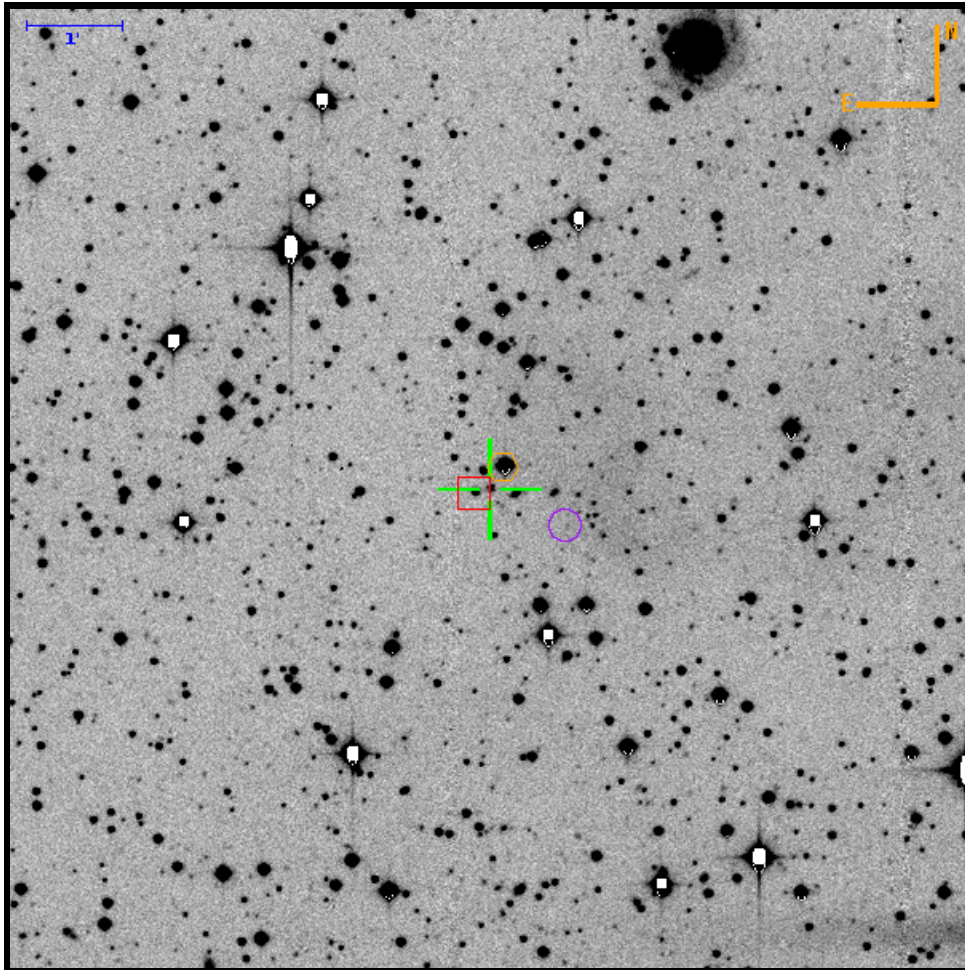
Theoretical 5 $\sigma$  limiting magnitude: 23.49. Filter: R. PTF field: 02 / 100128 / 10.

		To			
		Target	box	hex	circle
From	Target	0	3.30" W 8.01" S	13.06" W 38.54" N	72.88" E 17.34" S
	box	3.30" E 8.01" N	0	9.76" W 46.56" N	76.19" E 9.33" S
	hex	13.05" E 38.54" S	9.75" E 46.56" S	0	85.90" E 55.89" S
	circle	72.89" W 17.34" N	76.20" W 9.33" N	85.96" W 55.89" N	0



# Finding Chart for PTFS1121o

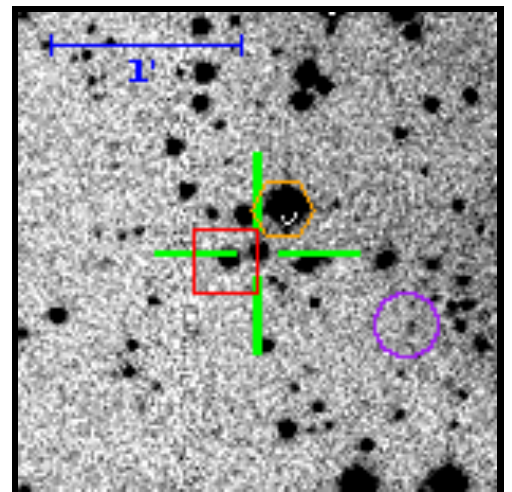
RA=21:12:29.58 DEC=+12:32:04.6



Target (green cross)		
RA	21:12:29.58 318.12323100	(J2000)
DEC	+12:32:04.6 12.53460600	
Med Mag	19.41 ± 1.41	R-band
Ref Mag	19.32 ± 0.05	R-band
Offset Star S1 (red box)		
RA	21:12:30.25 318.12602473	(J2000)
DEC	+12:32:02.1 12.53391997	
Med Mag	18.05 ± 0.05	R-band
Ref Mag	18.04 ± 0.01	R-band
Distance	10.1"	
Offset Star S2 (orange hex)		
RA	21:12:28.96 318.12066357	(J2000)
DEC	+12:32:18.5 12.53846108	
Med Mag	14.20 ± 0.06	R-band
Ref Mag	14.22 ± 0.01	R-band
Distance	16.6"	
Offset Star S3 (purple circle)		
RA	21:12:26.30 318.10959653	(J2000)
DEC	+12:31:41.2 12.52811264	
Med Mag	15.85 ± nan	R-band
Distance	53.3"	

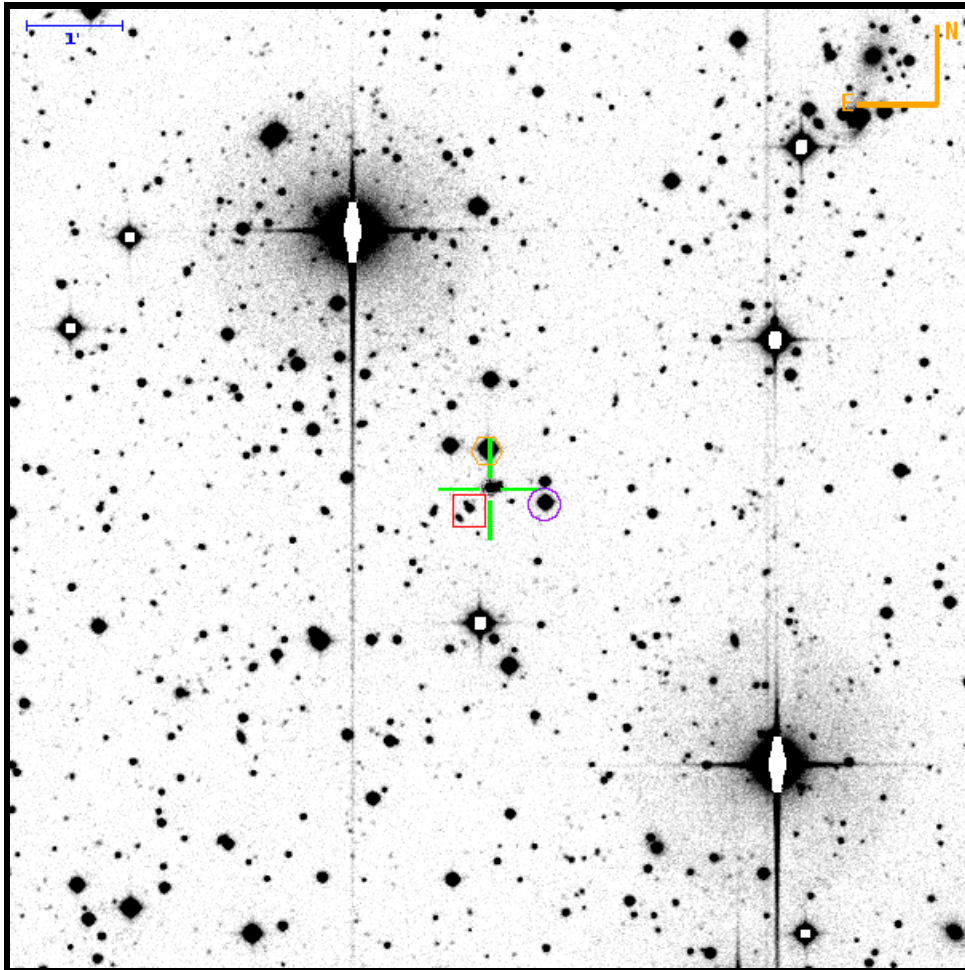
Theoretical 5 $\sigma$  limiting magnitude: 22.97. Filter: R. PTF field: 02 / 003312 / 00.

		To			
		Target	box	hex	circle
From	Target	0	9.82" E 2.47" S	9.02" W 13.88" N	47.91" W 23.38" S
	box	9.82" W 2.47" N	0	18.84" W 16.35" N	57.73" W 20.91" S
	hex	9.02" E 13.88" S	18.84" E 16.35" S	0	38.89" W 37.25" S
	circle	47.92" E 23.38" N	57.73" E 20.91" N	38.89" E 37.25" N	0



# Finding Chart for PTFS1121b

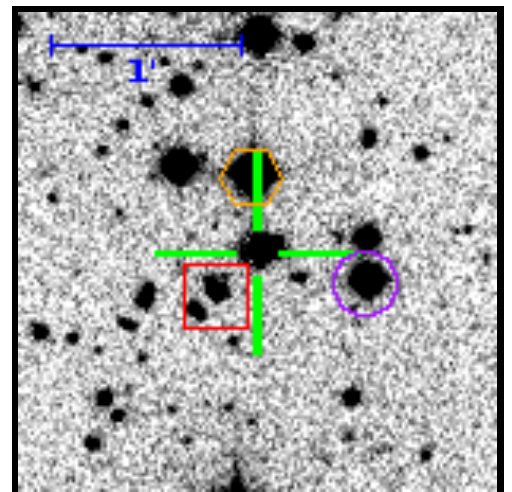
RA=21:30:24.63 DEC=-02:59:17.6



Target (green cross)		
RA	21:30:24.63 322.60263000	(J2000)
DEC	-02:59:17.6 -2.98822100	
Med Mag	17.08 ± 0.49	R-band
Ref Mag	17.08 ± 0.01	R-band
Offset Star S1 (red box)		
RA	21:30:25.48 322.60618567	(J2000)
DEC	-02:59:30.8 -2.99190016	
Med Mag	18.38 ± 0.08	R-band
Ref Mag	18.34 ± 0.01	R-band
Distance	18.4"	
Offset Star S2 (orange hex)		
RA	21:30:24.71 322.60295217	(J2000)
DEC	-02:58:53.4 -2.98149515	
Med Mag	14.35 ± 0.01	R-band
Ref Mag	14.35 ± 0.01	R-band
Distance	24.2"	
Offset Star S3 (purple circle)		
RA	21:30:22.29 322.59287796	(J2000)
DEC	-02:59:27.3 -2.99090670	
Med Mag	15.36 ± 0.01	R-band
Ref Mag	15.36 ± 0.01	R-band
Distance	36.4"	

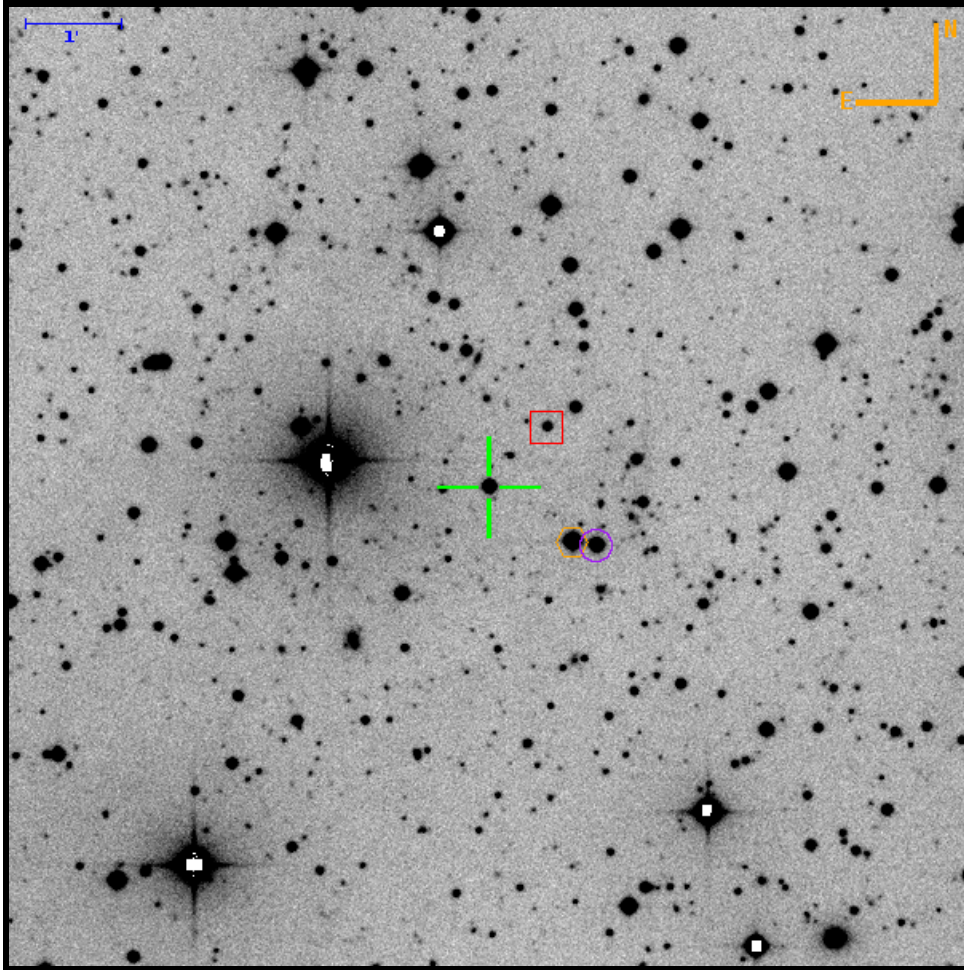
Theoretical 5σ limiting magnitude: 23.47. Filter: R. PTF field: 02 / 002581 / 00.

		To			
		Target	box	hex	circle
From	Target	0	12.78" E 13.24" S	1.16" E 24.21" N	35.06" W 9.67" S
	box	12.78" W 13.24" N	0	11.62" W 37.46" N	47.84" W 3.58" N
	hex	1.16" W 24.21" S	11.62" E 37.46" S	0	36.22" W 33.88" S
	circle	35.06" E 9.67" N	47.84" E 3.58" S	36.22" E 33.88" N	0



# Finding Chart for PTFS1121aa

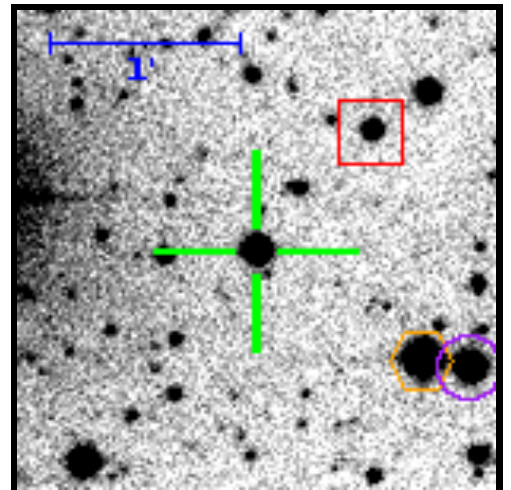
RA=21:43:54.60 DEC=+12:44:57.9



Target (green cross)		
RA	21:43:54.60 325.97749100	(J2000)
DEC	+12:44:57.9 12.74941400	
Med Mag	15.63 ± 0.46	R-band
Ref Mag	15.62 ± 0.03	R-band
Offset Star S1 (red box)		
RA	21:43:52.07 325.96697218	(J2000)
DEC	+12:45:35.6 12.75987721	
Med Mag	17.90 ± 0.05	R-band
Ref Mag	17.88 ± 0.01	R-band
Distance	52.8"	
Offset Star S2 (orange hex)		
RA	21:43:51.02 325.96257296	(J2000)
DEC	+12:44:22.9 12.73969438	
Med Mag	14.24 ± 0.01	R-band
Ref Mag	14.24 ± 0.01	R-band
Distance	63.0"	
Offset Star S3 (purple circle)		
RA	21:43:49.97 325.95820403	(J2000)
DEC	+12:44:20.5 12.73902050	
Med Mag	15.24 ± 0.01	R-band
Ref Mag	15.23 ± 0.01	R-band
Distance	77.4"	

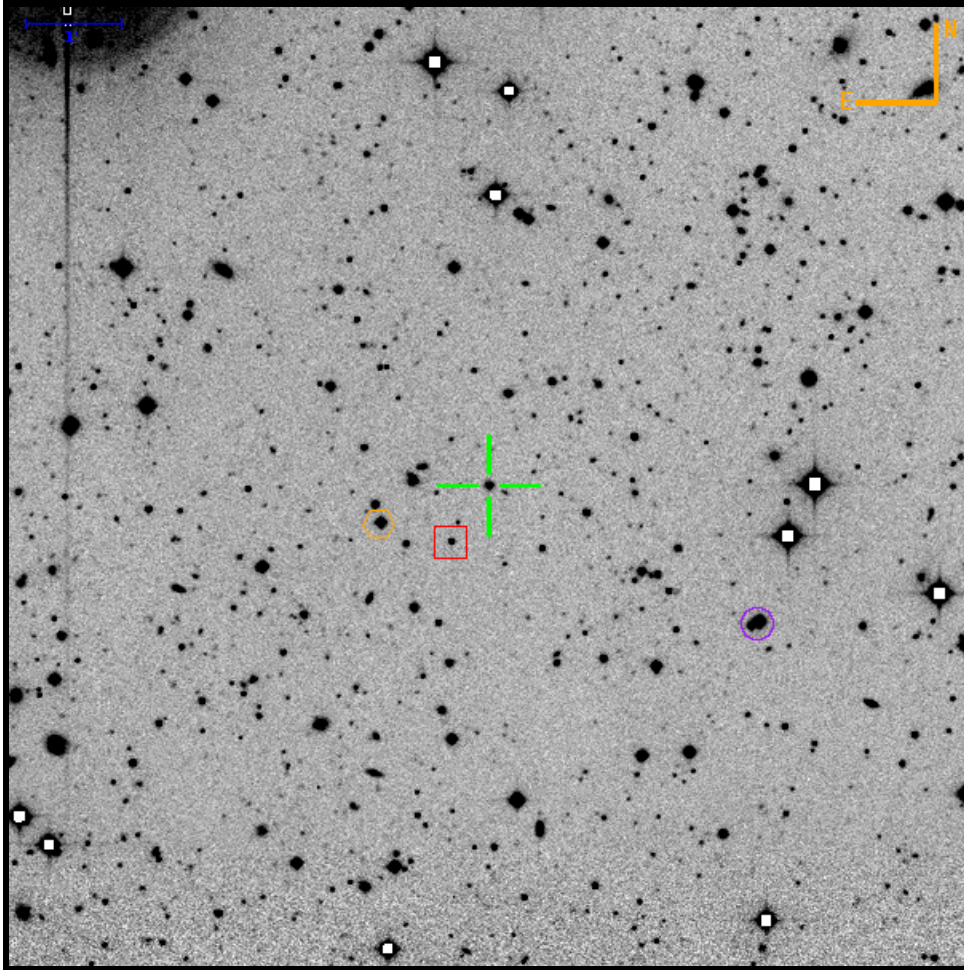
Theoretical 5 $\sigma$  limiting magnitude: 22.99. Filter: R. PTF field: 02 / 003314 / 01.

		To			
		Target	box	hex	circle
From	Target	0	36.93" W 37.67" N	52.38" W 34.99" S	67.72" W 37.42" S
	box	36.93" E 37.67" S	0	15.45" W 72.66" S	30.79" W 75.08" S
	hex	52.38" E 34.99" N	15.45" E 72.66" N	0	15.34" W 2.43" S
	circle	67.72" E 37.42" N	30.79" E 75.08" N	15.34" E 2.43" N	0



# Finding Chart for PTFS1122t

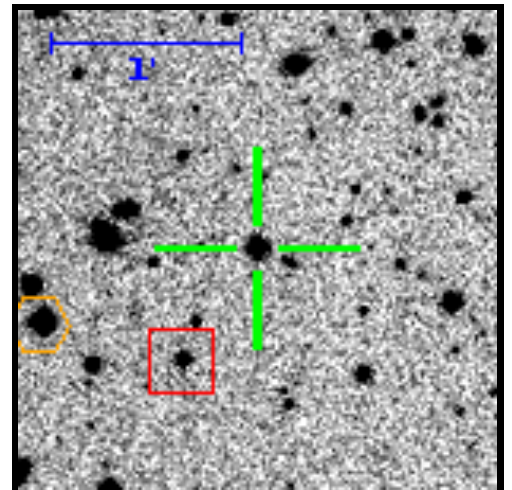
RA=22:45:00.73 DEC=+16:55:13.3



Target (green cross)		
RA	22:45:00.73 341.25303000	(J2000)
DEC	+16:55:13.3 16.92036900	
Med Mag	18.18 ± 0.61	R-band
Ref Mag	18.02 ± 0.05	R-band
Offset Star S1 (red box)		
RA	22:45:02.40 341.25999332	(J2000)
DEC	+16:54:37.9 16.91053861	
Med Mag	18.96 ± 0.08	R-band
Ref Mag	18.95 ± 0.01	R-band
Distance	42.8"	
Offset Star S2 (orange hex)		
RA	22:45:05.53 341.27302297	(J2000)
DEC	+16:54:49.8 16.91384482	
Med Mag	16.83 ± 0.03	R-band
Ref Mag	16.83 ± 0.01	R-band
Distance	72.8"	
Offset Star S3 (purple circle)		
RA	22:44:48.84 341.20348009	(J2000)
DEC	+16:53:47.7 16.89658169	
Med Mag	15.60 ± 0.05	R-band
Ref Mag	15.61 ± 0.01	R-band
Distance	190.9"	

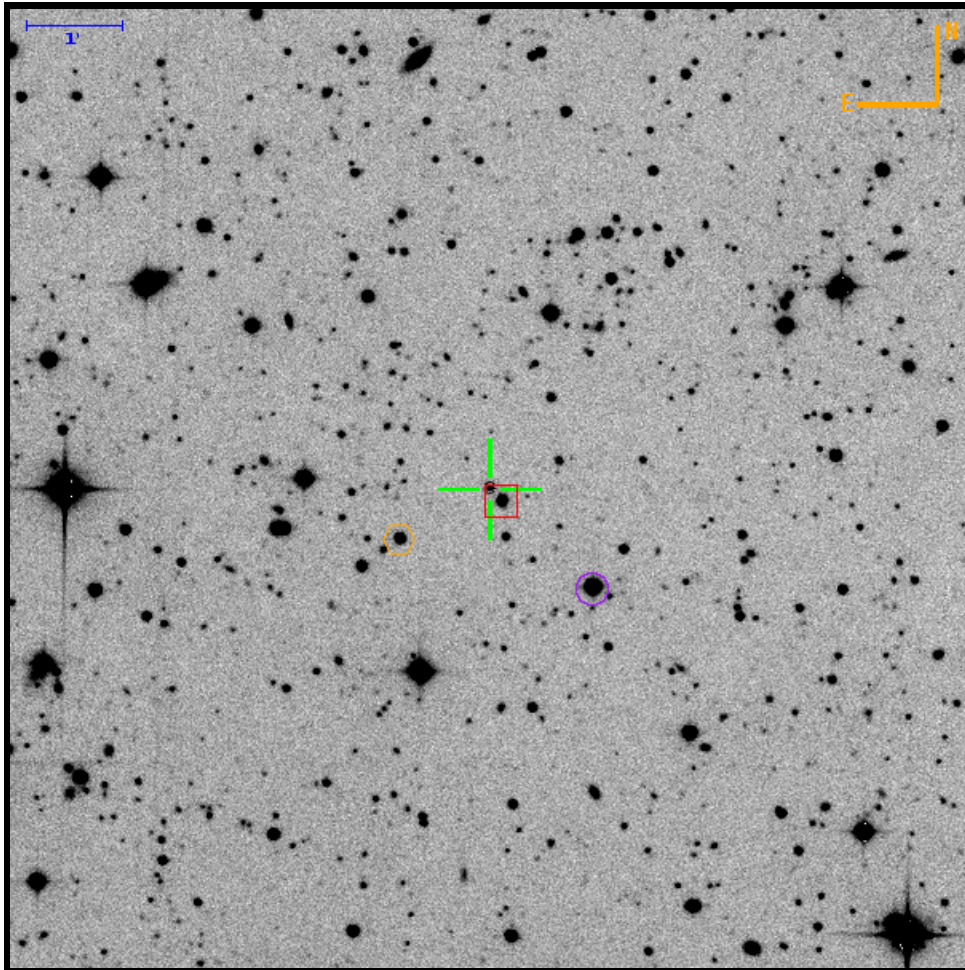
Theoretical 5 $\sigma$  limiting magnitude: 23.49. Filter: R. PTF field: 02 / 003521 / 04.

		To			
		Target	box	hex	circle
From	Target	0	23.98" E 35.39" S	68.86" E 23.49" S	170.66" W 85.63" S
	box	23.98" W 35.39" N	0	44.88" E 11.90" N	194.65" W 50.24" S
	hex	68.86" W 23.49" N	44.88" W 11.90" S	0	239.52" W 62.15" S
	circle	170.68" E 85.63" N	194.66" E 50.24" N	239.55" E 62.15" N	0



# Finding Chart for PTFS1123n

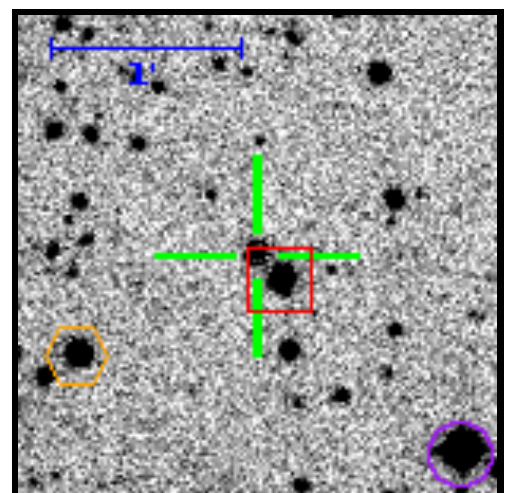
RA=23:03:41.81 DEC=+17:17:55.0



Target (green cross)		
RA	23:03:41.81 345.92420000	(J2000)
DEC	+17:17:55.0 17.29860100	
Med Mag	19.75 ± 1.38	R-band
Ref Mag	19.26 ± 0.03	R-band
Offset Star S1 (red box)		
RA	23:03:41.27 345.92194626	(J2000)
DEC	+17:17:47.2 17.29645102	
Med Mag	17.87 ± 0.04	R-band
Ref Mag	17.85 ± 0.02	R-band
Distance	11.0"	
Offset Star S2 (orange hex)		
RA	23:03:45.72 345.94051329	(J2000)
DEC	+17:17:23.5 17.28985219	
Med Mag	16.80 ± 0.03	R-band
Ref Mag	16.80 ± 0.02	R-band
Distance	64.3"	
Offset Star S3 (purple circle)		
RA	23:03:37.29 345.90536205	(J2000)
DEC	+17:16:52.9 17.28137135	
Med Mag	14.49 ± 0.03	R-band
Ref Mag	14.47 ± 0.02	R-band
Distance	89.7"	

Theoretical 5σ limiting magnitude: 23.39. Filter: R. PTF field: 02 / 003523 / 00.

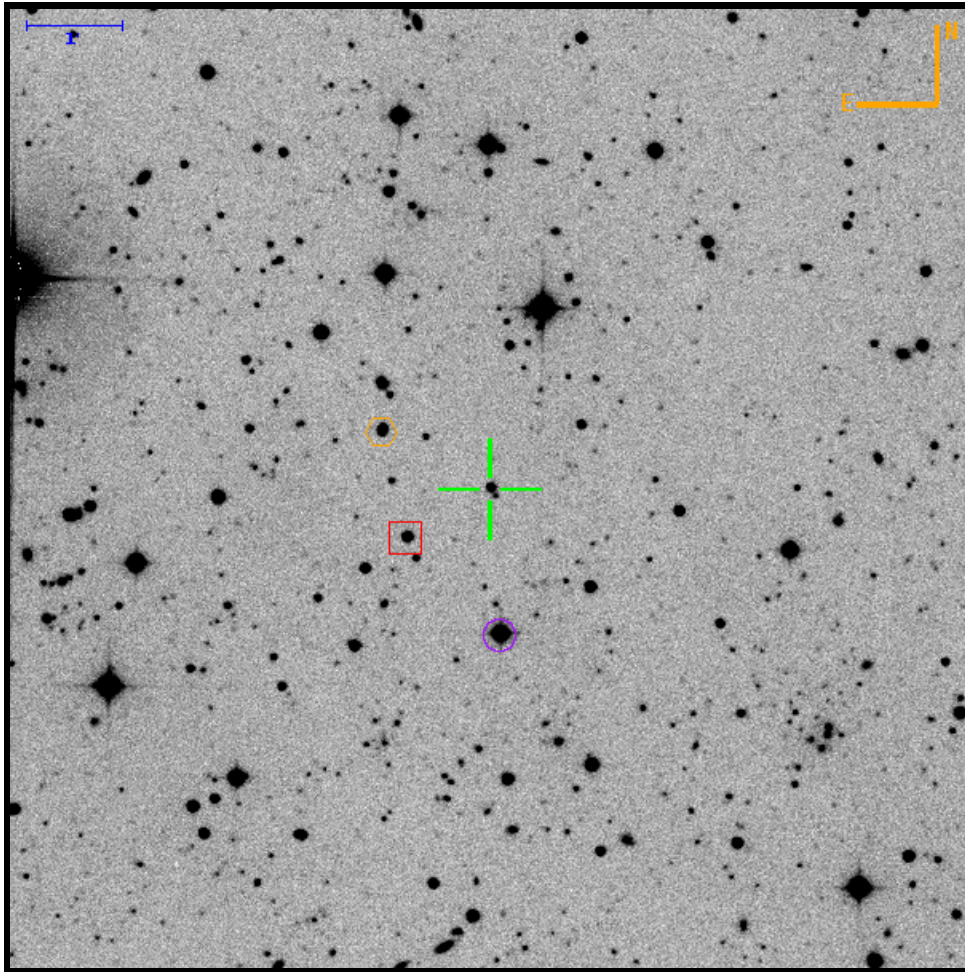
		To			
		Target	box	hex	circle
From	Target	0	7.75" W 7.74" S	56.07" E 31.50" S	64.75" W 62.03" S
	box	7.75" E 7.74" N	0	63.82" E 23.76" S	57.00" W 54.29" S
	hex	56.07" W 31.50" N	63.82" W 23.76" N	0	120.83" W 30.53" S
	circle	64.76" E 62.03" N	57.01" E 54.29" N	120.83" E 30.53" N	0





# Finding Chart for PTFS11231

RA=23:33:25.92 DEC=+15:22:22.2



Target (green cross)		
RA	23:33:25.92 353.35798100	(J2000)
DEC	+15:22:22.2 15.37282300	
Med Mag	18.77 ± 0.39	R-band
Ref Mag	18.29 ± 0.04	R-band
Offset Star S1 (red box)		
RA	23:33:29.53 353.37303328	(J2000)
DEC	+15:21:51.1 15.36420573	
Med Mag	17.26 ± 0.02	R-band
Ref Mag	17.27 ± 0.04	R-band
Distance	60.8"	
Offset Star S2 (orange hex)		
RA	23:33:30.61 353.37752863	(J2000)
DEC	+15:22:58.0 15.38278647	
Med Mag	17.46 ± 0.02	R-band
Ref Mag	17.46 ± 0.04	R-band
Distance	76.7"	
Offset Star S3 (purple circle)		
RA	23:33:25.49 353.35619155	(J2000)
DEC	+15:20:50.8 15.34743205	
Med Mag	14.21 ± 0.01	R-band
Ref Mag	14.19 ± 0.04	R-band
Distance	91.6"	

Theoretical 5σ limiting magnitude: 23.32. Filter: R. PTF field: 02 / 003424 / 00.

		To			
		Target	box	hex	circle
From	Target	0	52.25" E 31.02" S	67.85" E 35.87" N	6.21" W 91.41" S
	box	52.25" W 31.02" N	0	15.60" E 66.89" N	58.46" W 60.39" S
	hex	67.85" W 35.87" S	15.60" W 66.89" S	0	74.06" W 127.28" S
	circle	6.21" E 91.41" N	58.47" E 60.39" N	74.07" E 127.28" N	0

