

3008

7 43.5 710 54

41E

62852

580 + 103 + 107 1555 -

2835 2704

10463

spread

608 156 1015
028 154 1029
018 155 1022

2847 TG
2843 72

(1)

034=6 a=020
028=R n=78

167

x 202 9
x 31
x 1/6
130.5 maximum

318
1023
1241
1298

4035
495

-00192 -0236

-0020
-024
-029

4025

404
48

021-022

495

3000.000*

7.000*

43.500*

10.000*

54.000*

-0.027*

-0.022*

4.950*

97.724

28.000

0.022

0.834

25.483

-0.057

-0.468

-18.670

-0.153

0.292

-6.807

3000.000*

7.000*

43.500*

10.000*

54.000*

-0.029*

-0.024*

4.95 4.800*

97.5 91.201

30.500

0.023

0.834

25.419

-0.063

-0.468

~~-21.090~~

-0.166

0.292

-6.877

3011 7 428 -37 44 85

5.48-12-37

589-48 100 630 2753

② 3

87 634

174
913



② 3

② 3

10024 10055 60+
+100 100 100 100
+87.08

10022

1026

1022 1008

585

6.11

3011.000*

7.000*

42.800*

-37.000*

-49.000*

-0.022*

0.008*

6.100*

165.959

37.000

0.078

0.302

24.089

0.034

-0.946

-29.383

-0.071

-0.119

-16.263

8032 7 45.3 -39 12 B9

now

222

6.34-74

120

446

2.716

146
642

259

3049 7 47.4 - 25 07 Ad

259

No. of

555 22

145 870 2.841

138 874

276

1150

3060 7 48.9 -24 24 40

NO WJ

OS

L-46 12 136 1020 2853

140 1018

$\frac{270}{1248}$

3134 7 58.6 +16.36 84.2

u5823

591-02-0V

100

-014

145

1056

2.944

141

1054

282

1341

varied

2
5
5

3504 8 47.9 +15 02 400

25469

279

L.14-010

X.20

12200

004 143 1164 2.854 4802

144

56

X.14.2

①

288

a = 22

144

-105 146 1162

1163

n = 113

288

1451

-03

100 485-6245 225

1004-023

-0128

-013-020

L.10

(13)

3504.000*

8.000*

47.900*

19.000*

2.000*

-0.012*

-0.020*

6.300*

181.970

19.200

0.011

0.729

16.061

-0.084

-0.385

-22.602

-0.071

0.566

-2.137

312

8 010 -41 10

Went

546-10-

426.2

$\times 29$	-193	131	542	2.786	5
$\times 14$		103	561	2811	
			228	075	
			789		

1.56

$\times 4$ 43.0
 -5009 +507 ~~8mp~~
 +12

-00181 +0052
 1.2

-0041⁸⁹

← 005 +010

3162.000*

8.000*

1.000*

-41.000*

-10.000*

-0.005*

0.010*

6.200*

173.780

26.200

0.052

0.224

+16 14.817

0.011

-0.970

-23.429

0.005

-0.096

-1.662

$0.3m \approx 0.4 \text{ } 5''$

3489 9 439 -58 33 188

(2) 59

2.716

6.23 -24 100 501

93 506

184

692

692

Normal

3456

8 447

-1 43

A2

ABV

7458

12122

5.28 +04 +08 C 567

sh sh

5.28

624

035

136

1.214

2863

0, 2, 6, 13, 15

(2)

(2)

046

174

1.152

2861

56

51

?

12.0
12.11
0.15 16.1 11.92 16.6

a=0.074
n=119

166
1142
3229

1021
1007

322
1.169
1.5795

0.0

1023
1034

(-0.2)

-13.548

0.415
-0.125

0.006

-0.685
0.012

12.761

0.598
0.101

2.000

114.815

5.300*

0.000*

-0.034*

-43.000*

-1.000*

44.700*

0.000*

3486.000*

3086

7 528

+20 01

RS. 5.12

B=00

5.36-04-06

5.41-03-07 2355-

2

-012 124 1059 2.807

125 1059

250
1307

MY=10.28

VO 5.30

5.05

tg:

-6017-0412 NB0

-6016-0413

-6225

-622-034

3093

7

52.7

+ 25

33

~~64~~ AP

595

195

102

2.733

~~196~~

~~358~~

~~1069~~

~~372~~

~~1181~~

6

3083 7 524 +35 33 4p

64461

10701

w350

-0050-0336

-061-032

~~128~~
+23!

588
196

132 668 2736 et al

(418)
629
382
1071

191

535

(63)

3088.000*

7.000*
52.400*
35.000*
33.000*
-0.061*
-0.032*
6.300*
181.970
23.000

0.141
0.882

46.011

-0.083
-0.079

-16.932

-0.282
0.465

-40.688

3086.000*

7.000*
52.700*
20.000*
1.000*
-0.022*
-0.039*
5.100*
104.713
9.000

0.012
0.859

8.966

-0.146
-0.337

-18.324

-0.154
0.386

-12.601

4460 11 32.4 -54 ~~88~~ 89 ~~12~~

100673

462-07-20 C.

15977

(+02)

-033 +119 +938 (5) 2.265 (3)

104 938
218
173

Van Up

~~-6056 +020 +33~~

Van Up

$m_1 = -0.65$
 $v_0 = 4.55$
5.20

4468.000*

11.000*

34.200*

-9.000*

-32.000*

-0.065*

0.008*

5.150*

107.152

0.000

0.288

-0.049

30.838

-0.096

-0.656

-10.326

-0.065

0.753

-6.987

4450

11 37.3

-14 12

40

round

624 -12

153

1056 2860

1

144

1094

298

1397

0

(X)

R4E

4549

11

4549

-64 56

84 1E

103079

14241

489-12-52 C

7.5 2"

(Plumb)

-072

216

+126

104

+359

(3)

2.731

(3)

1

373
208
581

-032-006

7.5

+23.56

$M_V = -0.35$

$V_0 = \frac{475}{3.10}$

$V_0 = 495$

+5
5.15

-17
-565

-7.927

-0.053

-0.062

-27.444

-0.892

-0.061

3.112

-0.449

0.128

23.500

107.152

5.150*

-0.006*

-0.032*

-56.000*

-64.000*

49.400*

11.000*

4549.000*

Handwritten signature
L.S.T.
67

4612 12 83.4 -35 24 89

Value

6.24 -19 ⁵⁷ 58 697 2.720

92 201

184
985

-10

②③

2484 7 402 -38 25 88

Wuluf

6.56-28 121 576 2757

113 522

$\frac{224}{298}$

335

3677

7 52.4

+56 38

40

A244

6434

6.5

16 1322
1124

59

10700

630 152

1130

2856 2802

②

10 155 1126

304
1.434
1.494

324

A=54

1.87

n=102

51
x285
0-026

40.15

6.4

3077.000*

7.000*

52.400*

56.000*

38.600*

3.000*

-3.028*

6.400*

190.546

28.000

0.047

0.810

31.546

5.124

0.276

-15.928

-0.007

0.518

13.210

0-100

4386

11

18.6

+4

18

B9E

9964

404

-05

-120

15600

1K

$\frac{4.05}{4.04} = \frac{-06}{-055} = \frac{-13}{-125}$

2.932

FRY

-020

+123

+1.019

(3) $\frac{2.826}{106}$ (4)

$\frac{3.5}{4} = \frac{-0150}{-0150}$

FRY

-020

+123

+1.019

$\frac{2.46}{1.264}$

+01

$V_0 = 4.01$

(4.1)

-5.36

-065

-13

$MV = -0.1$

$\frac{0.949}{-0.91-0.11}$

-15.575

0.865
-0.166

-10.319

-0.480
-0.195

22.429

0.143
0.351

-5.300
66.069

4.100*
-0.011*

-0.091*
18.000*

6.000*
18.600*

11.000*

4386.000*

4423

11 26.2

42 23

89

99803

5.05-05

-009 122 945 2.5003 8th

149 950

238

11/88

round

$$m_v = -0.05$$

$$v_v = \frac{5.0}{5.05}$$

2984 7 348 -44 31 89

Polif

6.42 40

96 108

924 916 214

1132

2745 (2) 3

V 450 ~~My~~ ~~My~~ ~~MS~~

AN Var 14 15.3 -14 29

125144

Derech

-26.8

-009 + 008

-0007 + 16 turkin
v +3

-010 + 019

Slohu

-658+333	-644	+0326	+0300	+0626
+648+681	-341	-0307	+0613	+0306
-328+652	+684	+0154	+0587	+0741

217.2

+9.1

-18.3

E=+03

AN Var 8.5 -4.65 +62 +31 +36 -10: -26.8 100±
 6.15 +163 9.3 +6 +3 +7 +19: M.C +130

Observer:

045.81-11-5-

STA

0.388
-0.137

IME

0.355
-0.25

0.794
-0.167

16.746
L 7+

0.468
0.169

15.100
141.254
78.416

5.750*
-0.029*
-0.050*
-42.000*
-39.000*
37.200*
12.000*

4817.000*

Comments:

4632

12 68.0

+17 66

A2 $\frac{1}{2}$

165778

16425

(2)

4.77406410

69

+042

154

1.144

2.540 total

Sum 51

(113)

6.113
- 1.6

- 22125

- 2018142144

167
334
1186

1778
154

075 = a

117 = n

to

- 0154

022

140

1190

- 018 - 006

4629
105702
116116
12 0255 +6 06 Am
5.72 +

0.460
12.000*
8.000*
17.000*
6.000*
-0.018*
-0.006*
6.800*
229.087
-11.300
0.060
0.049
13.250
-0.064
-0.237
-12.000
-0.019
0.970
-15.245

3100 7 53.7 -52 27 89

Nov

6.40.35 83 832 2738 ② 34
93 825
186
1011

58 71.8 254

4689 12 17.3 -00 23 4 > II

107259

16813

389 702 705 <

$\Delta m = 0.36$
85
012 177 1120 2.879 JG side

-00434 -0222 F114
359 017 145 1159 2867 14935 .14

-0651

$\frac{1}{F(0.3-0.2)}$

017 163 1180 2862 at end 23
015 162 1136 2.865 1335

Paul 5

22

172

-063 -022

165

087 = 6

12.3

096 = 2

330
1133

40.1

1481

3.8
4.35



70569

HR3284

1143866

2064

8

20.5

+18 30

dF=0

5.54 +16 +17 1649

.091 .207

1026 @ SP 2.8374

2

4698.000*

12.000*

17.300*

0.000*

-23.000*

-0.063*

-0.022*

4.350*

74.131

2.300

0.208

-0.136

15.110

-0.223

-0.462

-17.559

-0.085

0.876

-4.297

1984

~~h 16
3.31
726~~ ~~894~~ ~~750~~ 217-
256.8 724 2752

4874 12 492 -39 24

111774 +02

5.46 -10 1.34

70
5.9

slow
-028 -034

-00262 -0302

number of planks
number of spurs

-0.4

+47

-0304
-030-026
↓

4862 12 349 -48 15 A2-D

109787

17194

386+05 704 L

621 159 1087

(113)

2861

(21) 67

(1)

AS

Old 100's

-1181 0B

-1939

165
236
1083
1409
1447

a = 038
n = 083

1035
255

45

(8.55)

+025

-6187 -019 545

+ 1111 114

(-183-009)

(-176)

4802.000*

12.000*

34.900*

-48.000*

-15.000*

-0.176*

-0.013*

2.550*

32.359

5.000

0.700

-0.493

20.202

-0.445

-0.834

-18.572

-0.105

0.247

-2.169

4802.000*

12.000*

34.900*

-48.000*

-15.000*

-0.183*

-0.009*

3.550*

51.286

5.000

0.732

-0.493

35.080

-0.459

-0.834

-27.700

-0.089

0.247

-3.312

3220 8 16.7 -36 30 47.75

70060

11373

444 + 22 + 11 =

(3.5)

128 194 860 (3) 2.807 (2) 6.5

x 5.1

364 232 834

444

1298

-0.10

BWLS1

FIRN

-80931 + 10924

-1122

(4.4)

-109 + 109.5

-12.944

-0.007

-0.170

8.393

-0.965

0.176

49.909

0.263

0.640

5.100

75.858

4.400*

0.095*

-0.109*

-30.000*

-36.000*

16.700*

8.000*

3270.000*

4833

12

39.4

46360

AD

A211

110422
1728 W650

B

→

4.03 404 +12 0.395
 0.24 170 1.173 2.874 270
 0.17 176 7.170 2.877 56

183
1771
1537
1555

use

170
300
300

a = 0.33
 36
 3.18

182
130

0373
036-013
1771
1537
1555

Bank 1

002-023
-3.6

1.173
1.537
1.555

n = 1000

+02

10.15
5.9

184
368
1171
539

4833.000*

12.000*
39.400*
63.000*
0.000*
-0.032*
-0.023*
5.900*
151.356
-3.600

0.084
0.333 49

11.491

-0.157
0.478 72

-25.425

0.058
0.813 120

5.815

4833.000*

12.000*
39.400*
63.000*
0.000*
-0.036*
-0.013*
5.850*
147.911
-3.600

0.119
0.333

16.466

-0.133
0.478

-21.445

0.029
0.813

1.435

3501 2 41.9 -38 05

$E=00$

6.41-15-48 C

-065 106 510 2.240 C

36 503

172

$\frac{172}{195}$

$m_v = -0.4$
 $v_0 = 6.4$
 $\frac{v_0}{c.8}$

~~6002 + 1006 020~~
~~1005 1005~~

~~6~~

~~6~~

~~6~~

-026

-6724607

-017 1005

3001.000*

7.000*

41.900*

-38.000*

-5.000*

-0.017*

0.005*

6.800*

229.087

-6.000

0.055

0.299

10.859

0.025

-0.946

11.423

-0.058

-0.124

-12.564

3001.000*

7.000*

41.900*

-38.000*

-5.000*

-0.022*

0.007*

6.800*

229.087

-6.000

0.074

0.299

15.069

0.033

-0.946

13.231

-0.074

-0.124

-16.197

3203

9 027

-48 32

85

-D014 -805 Stop

-D016 -802
Fwd +2274

-D105

-D006 000

5.70 -25 87 680 2684

223

79 685
151.
843

5.6
1758
73

-11.042
-0.024
-0.147
-25.439
-0.984
0.005
7.220
0.105
0.015
27.400
295.121
7.350*
0.000*
-0.006*
-32.000*
-48.000*
7.700*
8.000*
3203.000*

3410 8 350 + 5 53 405

153 109 1 2851
155 1089
310
139

~~1085~~ -0117 1-1094
139

4.15

-066
-069 -009

112



3410.000*

8.000*

35.000*

5.000*

53.000*

-0.069*

-0.009*

4.150*

67.608

12.000

0.178

0.685

20.255

-0.001

-0.580

-7.025

-0.278

-0.441

-13.477

~~3265~~

3372

8

29.9

+10

14

A07B

72359

-003

156

1039

2810

22

155

1035

810

1340

-0.1

-0.25

von hand

~~327~~ 1128
~~327~~ 9

3361

8

29.2

+ 9

59

A0

22208

6.58:

-012

131

890

2805

127

892

$\frac{254}{1146}$

$m_r = 0.00$

$10 \frac{6.5}{6.5}$

$\frac{6.5}{6.5}$

Verwend

3348

8

28.1

+37

26

RTI

~~200~~ -04 -16

E+M

6.18 -017 125 1005 2.816 A05

120

1008

241

1246

MV 50.00

+16:

V0 6.05

6.05

~~JK~~

5.811 1917.8
-0012 ± 7.8
-005 ± 7.8
5.53 1917.0

3331

8

26.5

-29 03

189

Wend

6.77

10

118

1010

2744

①

121 1088

242

1250

33 2/18

9 24.5

- 31 5-4

6.7 40 39"
7.3 40 39"
20.05

round

10.1

6.61 - 22 139 611 2-250

①

2.25 45 135

216 925 230 925

937 2915- ①

460
13 88

3435
 7 37.3 -522 54 B4

(don't know?)
 Newy and bed

Spring
 6.49 -10 -32

LC2341
 -490 ~~124 655 2.778~~ 2.778
 -490 124 655 2.778 (B) 54
 949 + 110

x13
 $-10^3 n + 10^4$
 $-10^3 n$
 $10^3 n$
 $10^3 n$
 110
 220
 93

-0276

x13

x41

x13

-624 766 8

3435.000*

8.000*

37.300*

-52.000*

-54.000*

-0.024*

0.008*

6.300*

181.970

13.000

0.099

-0.004

17.964

0.008

-0.992

-11.455

-0.067

-0.123

-13.828

$\delta m = 1^m 0.4''$

2937 35.5 -34 52

4.58 - 09 - 80

E 103

041 127 711 2.794 2

114 719

$\frac{229}{947}$

$M_1 = +0.25$

$\delta v = 4.950$

$\frac{4.950}{4.25}$

10322.6 10133 F144
+ 2406

-0278

-024 1015

~~-7.275~~

-0.116

-0.065

-18.854

-0.927

0.049

15.929

0.356

0.107

24.000

69.183

4.200*

0.015*

-0.024*

-52.000*

-34.000*

35.500*

7.000*

0.460

2422

7 33.4

-28

15

05

~~Exp~~

463-11-39

-047

122

587

2.752

42

108

556

$\frac{214}{812}$

Value

$MV = -0.3$

$\frac{V_0 \cdot 4.68}{4.85}$

2407 7 31.5 - 24 56 099?

Novel

624 - 61113 530 2.233 659

95 542

$\frac{190}{2}$

73

2889 7 299 35 46 40

Work

6.58 - 1792 681 2.772 (3) 39

97 634

$\frac{174}{908}$

2885

7 28.8

-36 02

668-1285E

138

6.64 -46 82 381 2.643

② 3

68 350

3.5

$\frac{136}{526}$

-013-007

+210

6.5
 $\frac{1.3}{2.8}$

-28.215

-0.147

-0.069

-16.021

-0.926

0.009

5.827

0.349

-0.004

21.000

363.078

7.800*

-0.007*

-0.013*

-2.000*

-36.000*

28.800*

7.000*

2885.000*

2875

7

274

-3542

54277

8315

0

539

-81

92

395

2708

2

59

92

395

184

569

2838 7 23.6 -4 26 184

E + 045

6.76-01-11

6.79-505

149 881

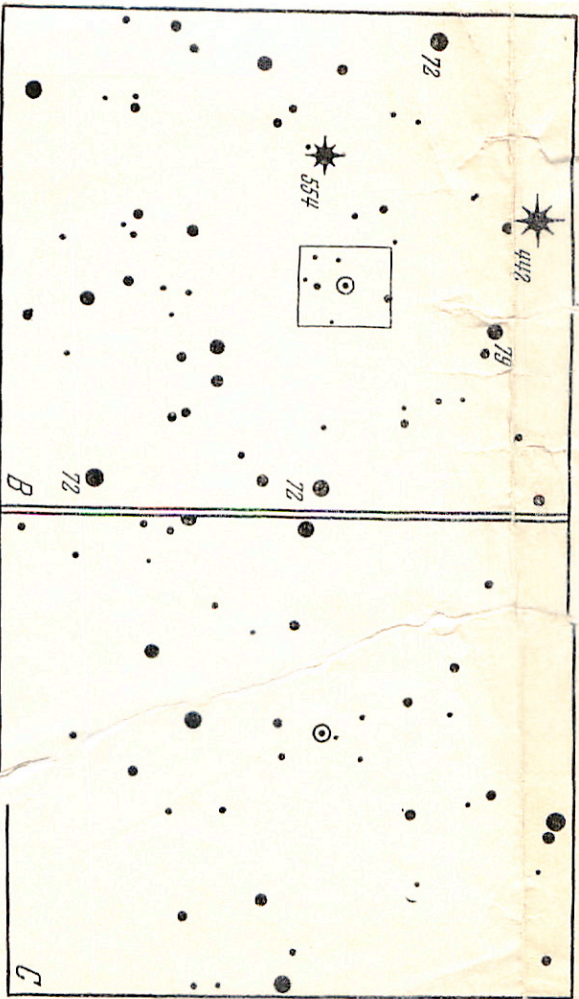
2888 7012

148 882

$\frac{246}{1178}$

19 1866

MV 70.45
V0 6.65
6.2



CU Vel

$\delta^h 54^m 46^s - 41^\circ 24' 8''$ (1900.0)
 $\delta^h 56^m 37^s - 41^\circ 36' 3''$ (1950.0)

B

72

72

C

