

NE Coma

1

2

154354 12 32 18 714 52 6.7 gms.

~~WV 4.6 gms~~

(B)

May
1933

Titer

15 07 58 +31 01 6.5-13.6

12.5 cl

172

101

11

058c

19

76

278
anc

1.50

64/4

2.19

2.19

2.19

2.19

556
773/3
13

100
100

260

12
18
18
18

16
16
16
16

16
16
16
16

16
16
16
16

16
16
16
16

anc

anc

anc

anc

anc

anc

anc

anc

anc

anc

anc

anc

anc

anc

January 73
 Brighter than (10 m³)
 T 1402 ^{and 1400} 59 54 -50 43.5 217
 7.2-13

LA

Apr-08-21

now 9"
 1911-08-23

1913-01-10

10-21

10-22

.

09-10

08-27

11-24

.

09-11

09-08

12-11

o

10-16 box fresh

(10-13 used?)

09-09

.

11-14

.

11-13?

11-20

..

1913-01-14

normal

11-2

Skull too faint

20" / mm.

01-15

12-05

X Leo

9 45 39 +12 20.6 1500
46 20 +12 06.7 1550
49 00 +12 03.4 1562

200

AOS 748

9 33.8 +14 33 / 960

(A)

150 "

420
40
8.5
B.S. 40
P=200

X 100



© 1911

LDS 766A 21 55 54 -13 34



10" { 15.04 - 0.13
14.5 ± 1.2
MBV RBV

Resistor
is ~~Small~~
MBV

4.27 -9

9.9-15.5 May May 22

S Sco

16 15 53 -22 49

do
w/v

J

11.81 +1.81 20 Aug 72

①

11.19 +1.83 18 Aug 72

New from 16

RR Sco

①

16 54 42 -30 32 5-12.4

30

31

HD 152804 ✓✓ 16 54 57 -31 57 8.489

HD 153045 ✓ 16 56 27 -32 54 9.1 89

152519 ✓ 16 53 09 -34 29 6.85 A0

Page

2008

17 06 01

-16 04 02.5

any page 15

154944 ✓ 17 07.25 -15 18 8.3 AD

154621 ✓ 17 07.18 -17 33 8.2 AD

154631 ✓ 17 06.42 -20 11 7.5 AD

154618 ✓ 17 06.36 -18 08 8.2 AD

154348 ✓ 17 04.00 18 04 7.6 BS 2

15

1971 01 29 15 -42 51
1967 01 29 04 -43 53

R 9-9.5 -71° 58 km ^w km

of double N2 " m
6 m N1

WX Ut 1

~~6413 01 03 03~~

~~6413 01 03 03~~

(+)

-48 07

6.83 m 210

(113)

SYRHE

Scale 56" = 1 mm

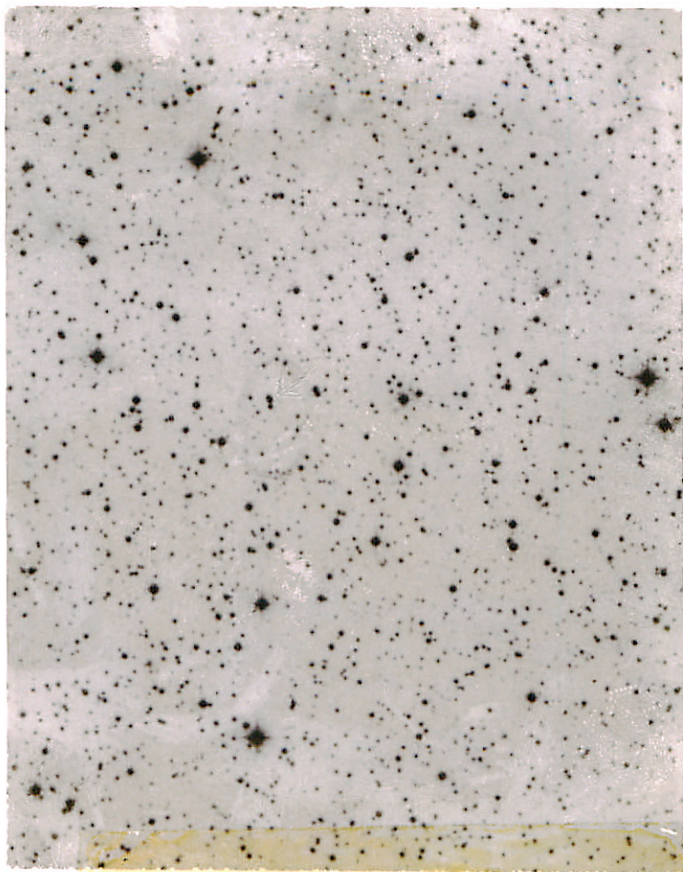


E

24m

N

N



FE

AH Yens  13 AH 60

A H Gem 6 47 31 +16 06.8 1900

50 23 03.4 1950

51 04 02.7 1962

$$44.4 = 14.8$$

$$14.8$$

$$0.327$$

very close double

Major 10.88 6 1929

41.
550
076
418.

CV
4/4

5

N 9

WZC Mi 7 45 37 403 54.5 1900

46 12 47.1 1950

Som mid 16 48 51 403 45.3 1962

1529

0.76

25 C 1 Dark V

250"

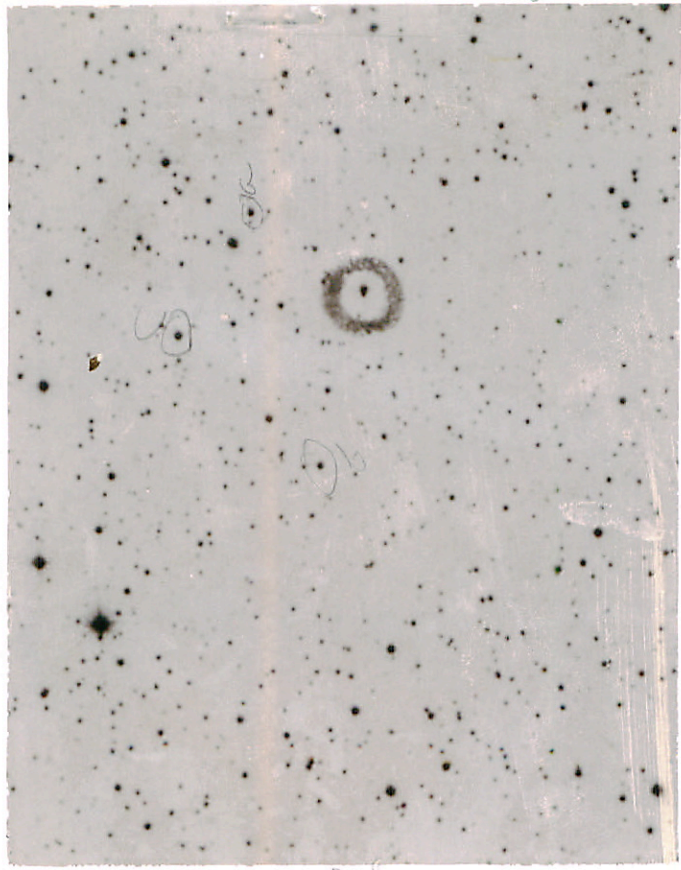
plus on W 0.2 } mm

App mm

W 32.4 - 4.46

475

100-1000



100-1000

this parcel may be

DF Lyr. ^{c.} Hoffmeyer 18

Sum north (17)

242 1929 via

13.1-13.5

0.577 ✓✓

47 39

49 36

51 35

59

52 04

+27

+28

52.8

56.4

00 1950

00.7 1960

01 1962

Van *'s 5 107 ~~MVS 302~~

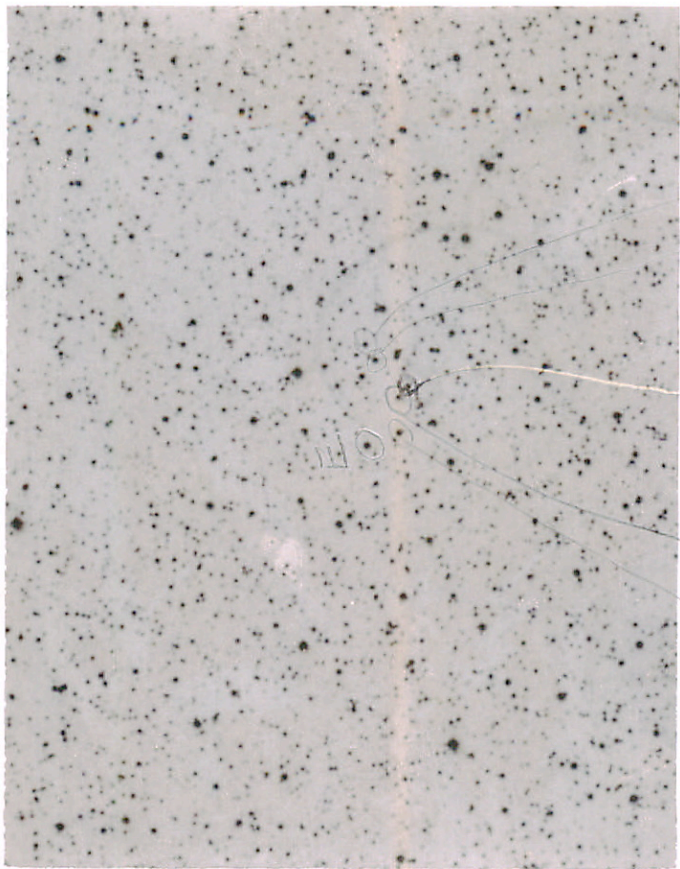
North
B, E

ap *'s
only

B, C, E

E is on Eymurghent

B is middle ~~stone~~ of 3 of the Central of 3 about stone NW of Van



DF L Y R 0 0

O III

B →

B

100

V804 Ayl ^{Swiss} 18 57 40 26.5
20, 21, 4 19 00 20 -06 22.1

12.5 - 12.8 ✓
0.655 ✓
19 03 01 17.7 1950
33 16.8 1940
39 16.6 1962

✓ 3+

op. x's

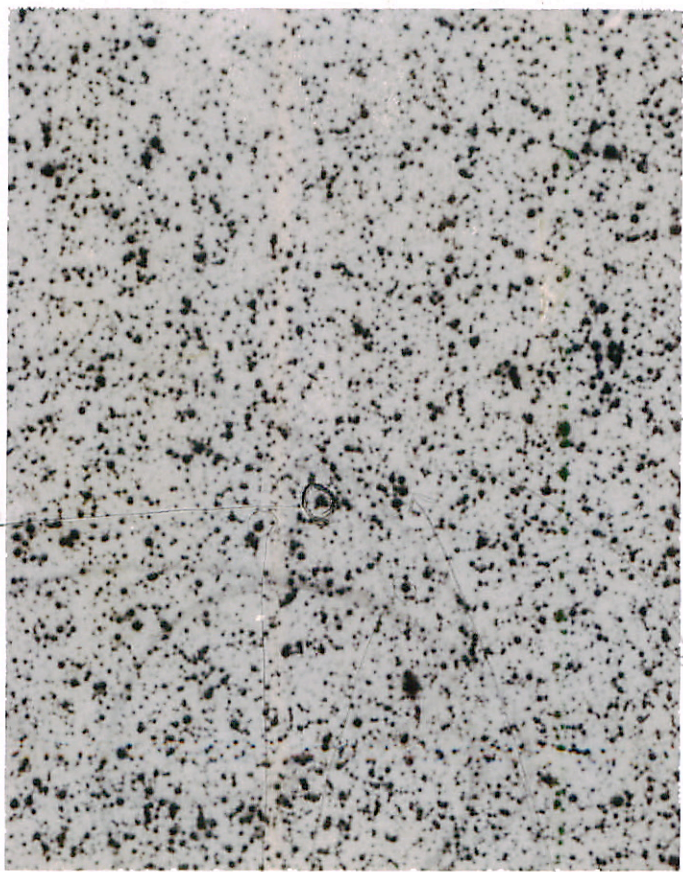
①
②
③
④
⑤
⑥
⑦
⑧
⑨
⑩
⑪
⑫
⑬
⑭
⑮
⑯
⑰
⑱
⑲
⑳
㉑
㉒
㉓
㉔
㉕
㉖
㉗
㉘
㉙
㉚
㉛
㉜
㉝
㉞
㉟
㊱
㊲
㊳
㊴
㊵
㊶
㊷
㊸
㊹
㊺

A, C (1)
+ var July 6, 4

G.A. Bahas
1950 Lenta Amms 20, Part 1/2

151

V 804 A 38



C B



A

TY type

18

24

25

27

28

29

30

✓

27

48

56

1550

✓

138-141

28

11

57

57

✓

class

15-

each

W 11/6/78

58.5

61

1950

59.00

102

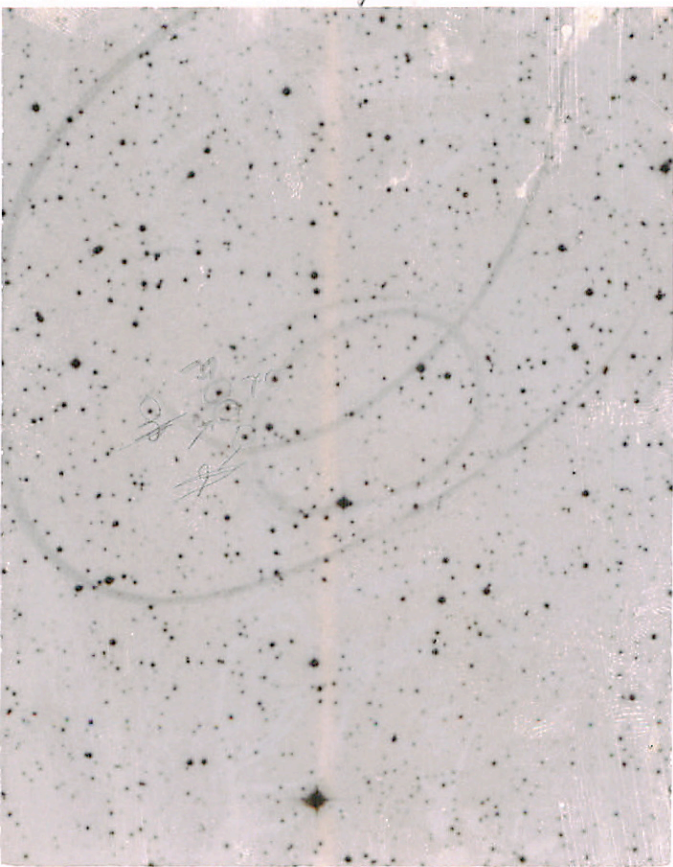
1942

10.0

DA

MVS302

Vol. KI



f

Club +
A New York
D Club of 1201A
W