

Y Mic 1967 21 05 03 -3425-

BV 10.3 - 11.9 182 -

~~RV~~

Y Mic

Score S6" = 1mm

E

⊙

N

T
1967 22 23 45 -37 44.5

x 56

(1) 2

x B ✓ 7.8 - 12.3 136.6 Moe -570

Aug 22

✓ ✓

✓ 11 Aug

July 2
Sant 198
20

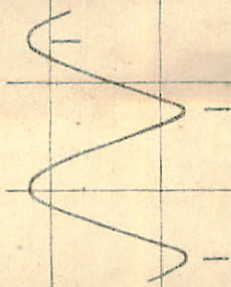
✓ ✓
D ✓

13
14

954

✓ 2 out with 2 out 3 more

221938 T Gru 136



Ray HHSV

Scale 56" = 1 mm

T 5m

N

Comments:

EF Cep

$\begin{matrix} 27 \\ 4 & 27.9 & +80 & 32.6 & 1500 \\ & 39.7 & & 41 & 1962 \end{matrix}$

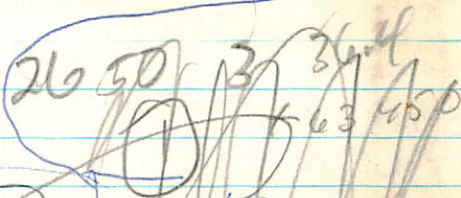
FAZ 180° MB

Pg

$\begin{matrix} 12.0-12.6 \\ 12.6 \end{matrix} \left. \vphantom{\begin{matrix} 12.0-12.6 \\ 12.6 \end{matrix}} \right\} 0.606$

~~W 3104~~
~~3 44 15~~ ~~168 33~~

~~1023104~~ $9.3 \left. \vphantom{9.3} \right\} 10''$
 $\begin{matrix} 11.4 \\ 11.5 \end{matrix} \left. \vphantom{\begin{matrix} 11.4 \\ 11.5 \end{matrix}} \right\} 10.5$



~~2592~~ $3 \quad 30.3 \quad +58 \quad 38$

Aster $6.3 \left. \vphantom{6.3} \right\} 20''$
 8.0

~~2612~~ $3 \quad 31.7 \quad +59 \quad 54$
 Munt $\begin{matrix} 7.0 \\ 8.0 \end{matrix} \left. \vphantom{\begin{matrix} 7.0 \\ 8.0 \end{matrix}} \right\} \text{close}$
 $10.3 \left. \vphantom{10.3} \right\} 93'' \quad 2380$

W
A
D
C
D

		19	15	28	1855
Z Z Cyg	20	20	41	+46	35.5
A?		22	17		45.4
Cp 11.6			36		47.3
8.5 430	10.7 - 12.0		40		47.7 1962

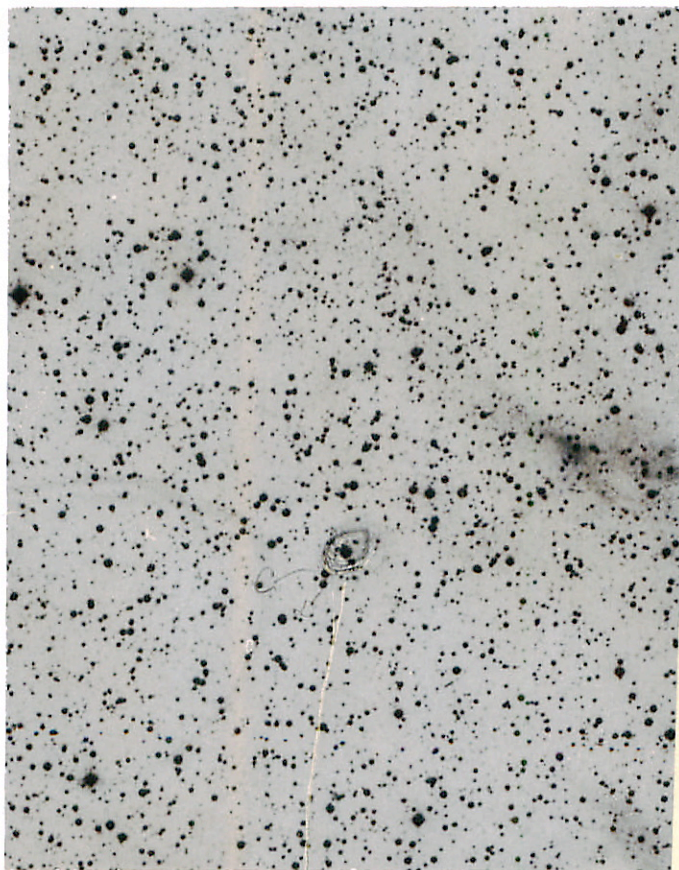
Van + 7 no. 4, 210

Mors

B
a

A.M. Brijede Van Slu 7, 210, 1951

2



2

2



EQ Tans

3

39 30

42 20

421
422

51.5

18 55

00.8

1900

45 17

10.2

1950

46 00

13.5

1962

11-9-126
D. H. S.

✓
(3) + 6, 2, d

air red

~~Red~~

X, + 7 200"

→ end mark

N

E

α

β

γ

δ

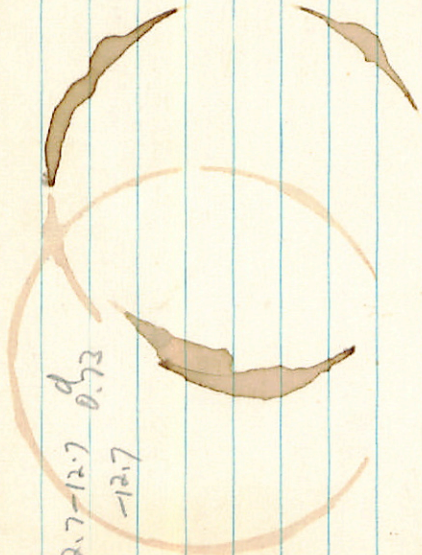
EQ 1910

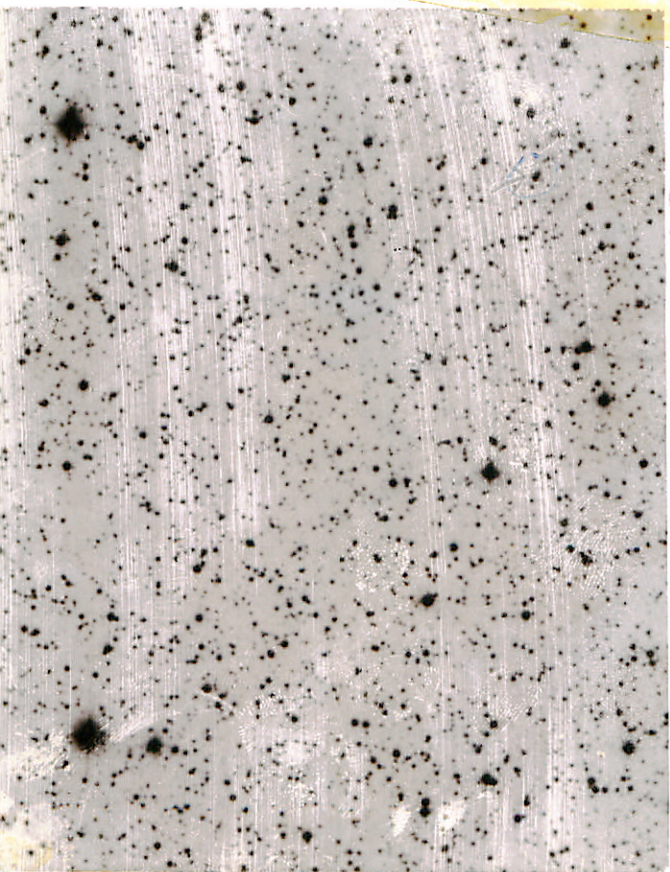


V366600 / 02.2 +58 10 1900

05.6 30 1962

12.7-12.7 d
0.73
-12.7





N
EY
Caa

W

BX Del

20

14 45
16 48

418 08.1

60 1335

93⁰

Cap.

19 04

17.5

93¹ 114-12.6

3.4

13.4

10917

3.6

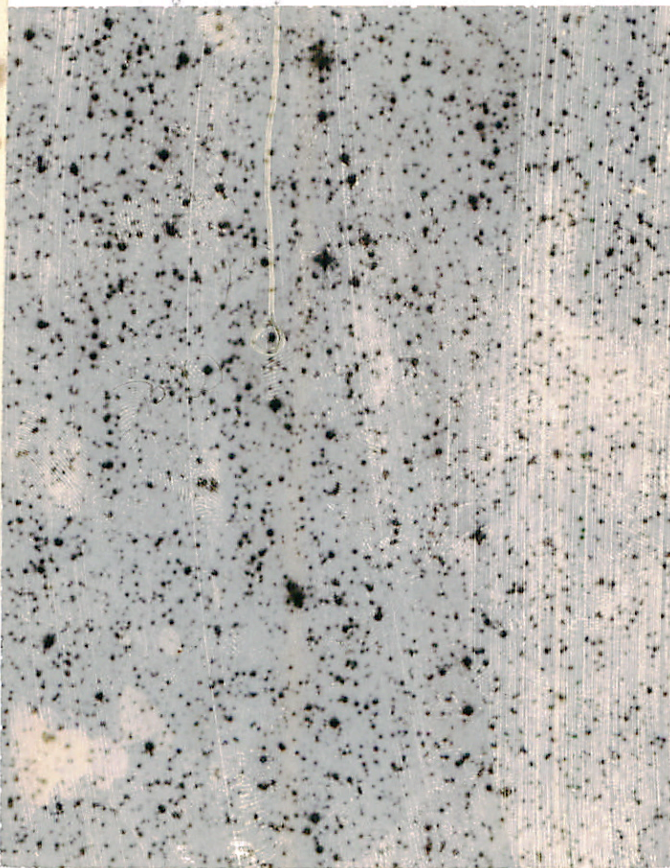
13.8 1442

Some Wild H22

X

JUP
A¹ B

Bx 102



11

V 954 ceph

g 4206

14.3 - 14.9

0.225

02 00

22.0

18 04.18 +01 22.2 1900

6 50 22.5 1950

7 20²³² 22.5 1940

26²¹⁷ 22.5 1942

2 17

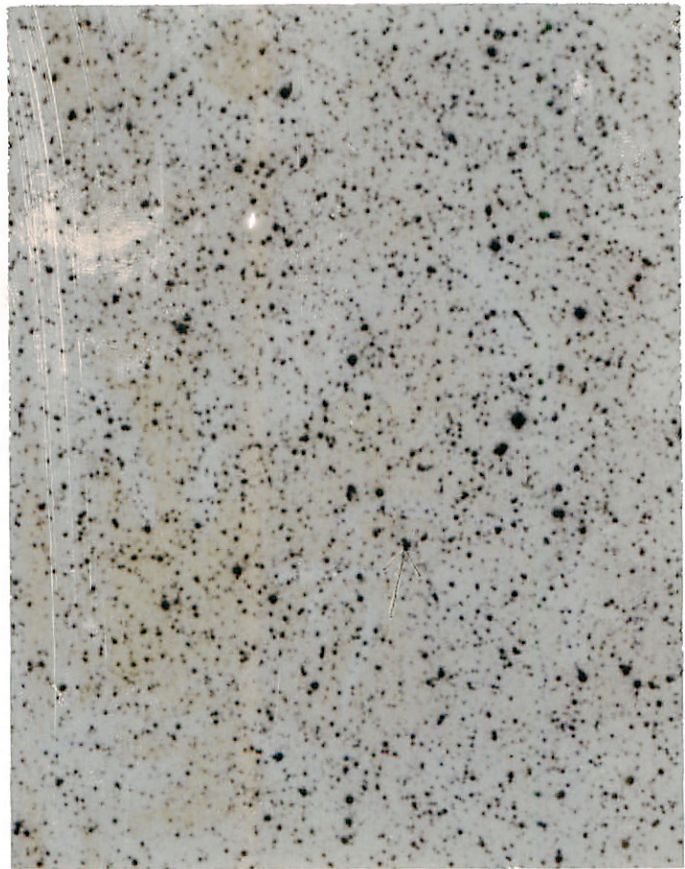
4 18

200

Wrong*

OK
Chick

W



E

↑

V954 CPK



V960

54213

15.8 - 16.4
0.36

18 06 42

9 10

39

45

+06 08 1900

08.5 1950

08.6 1960

08.6 1962

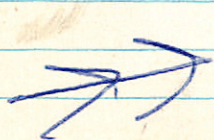
Confidential I.D.

~~100~~
~~200~~

(A)

2 20
2 23
6 20
4 20

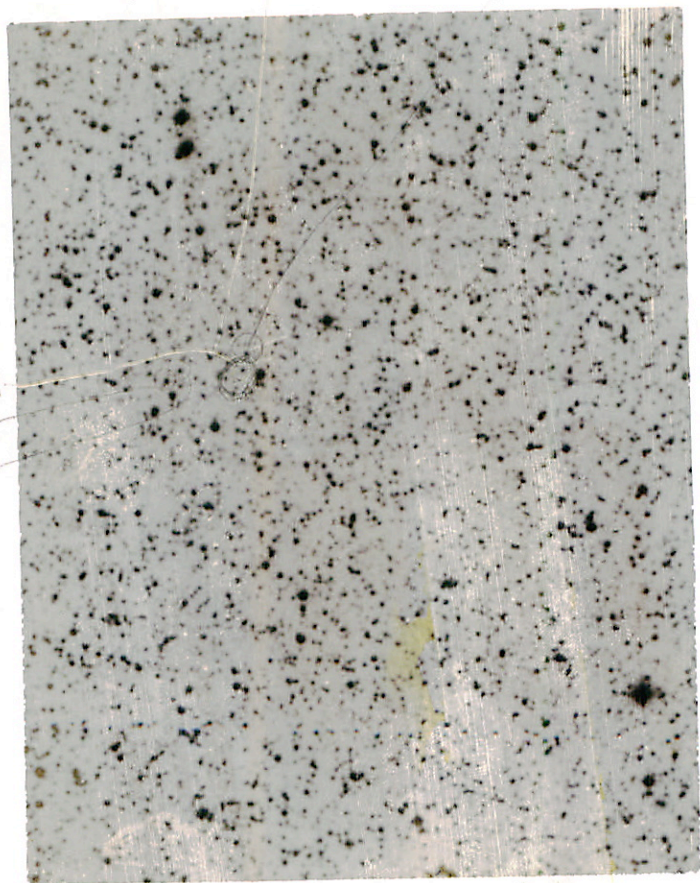
(200)



3 200

+A, B

A - Vg 1000/1000



Nov 10

G-117-B11

9 43 23 +33 053



44 05

02

14622

13.0 +3

16.7 0 3

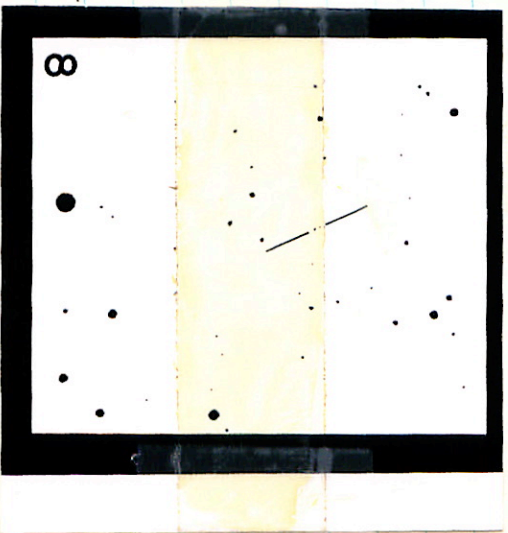
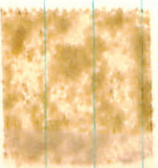
"

2 18th Ref

(B)



15.0



✓ W 7688	12	48.7	-00	32	8.49 +1.41	+1.27
✓ W 7459	12	23.2	+24	09	6.03 +1.10	+1.00
✓ W 7675	12	46.9	+14	21	5.70 +0.02	+0.07

W 6999	11	27.9	+30	12	649 7.0 } 67° 33' dip	②
8861	13	17.8	+35	21	9.0 } 17" 120°	②
9535	15	11.1	+19	26	6.1 } 24" 100°	③

Hyards
9555

L-1405-40


L-1405-1

11	47.7	+26	35	1950
18.14		+25	31	1962

$$\begin{array}{r} 15.3 \\ \hline 16.3 \end{array} + 0.1 \} 36'' \text{ } 250''$$

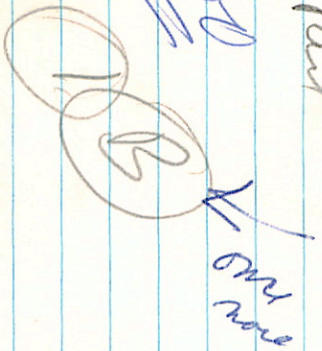
$$16.3 + 1.3$$

← 165" read



 A Ment

200



 B more more

N



E

1405-40



G40-31

8

34,24^m₅

+26

23.2

1450

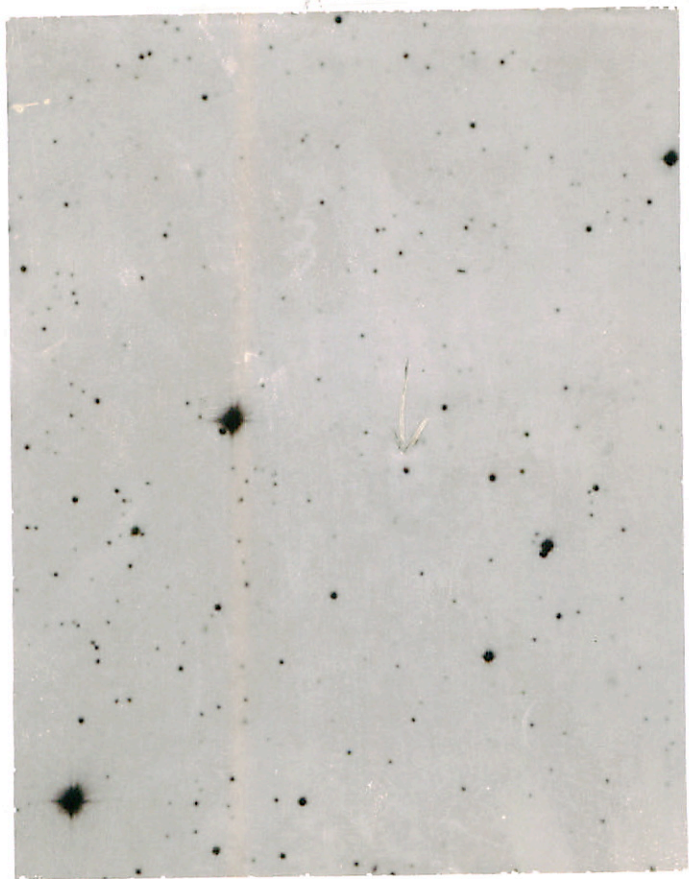
3507

~~2019~~
2017

1562

13.2^m red pul. var

1 Prod



24-50

G-71-B5

(1)

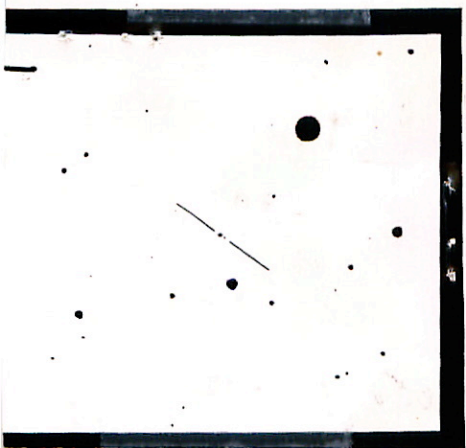
1 50 31 + 8 56.7 1950

→ 1 51 09 44 00.0 1962

13 } 13" 311°
145 }

2000''

A read



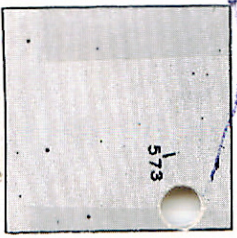
Tom 573

11 07.3 126 38

15^m W.D.

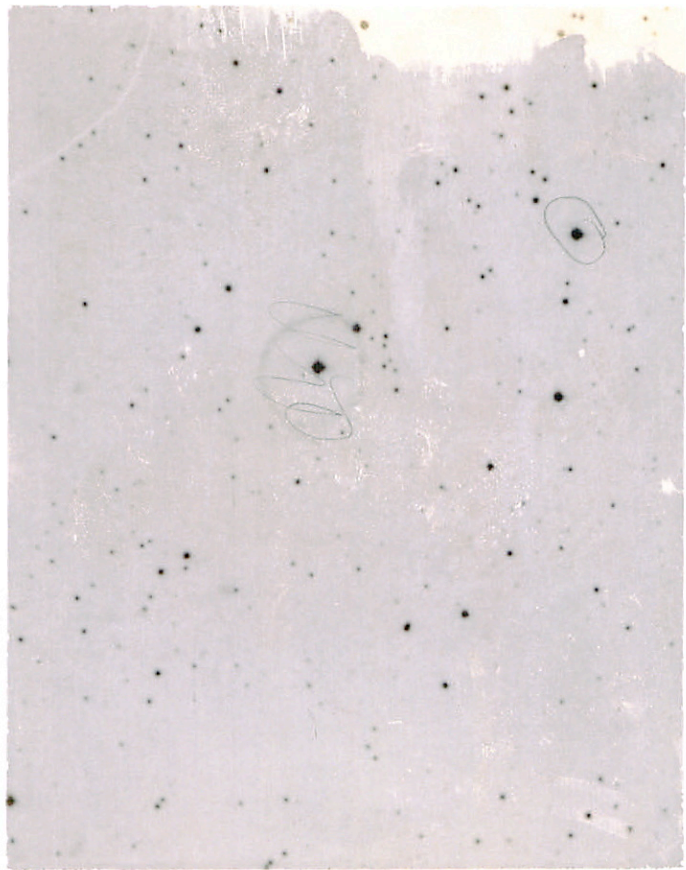
→ 68.0 126 34 1543

Star
in middle hole
quadrilateral



Star
in
hole

— 5074



Name

2nd
+60 2932 14 40.9 41.4 +06 02 1950
12.4⁰ 12⁰ 1960

A in sdG-2 p = -138d 3w

10.7 } 3.85 2910
12.5 }

Δm ≈ 1.5 to 2.2^m

200^W

2.600" Reting response with 20"
get 2 of A }
2 of B } 3 volume pg with 200"

Spare vel n 350 km/min

G 87-28/29

7

06 51

+37

45.4

1950

07 40

~~44.5~~

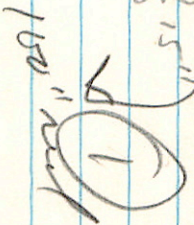
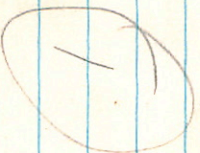
1942

R.D. 15-3-15.11

44.3

W.D.

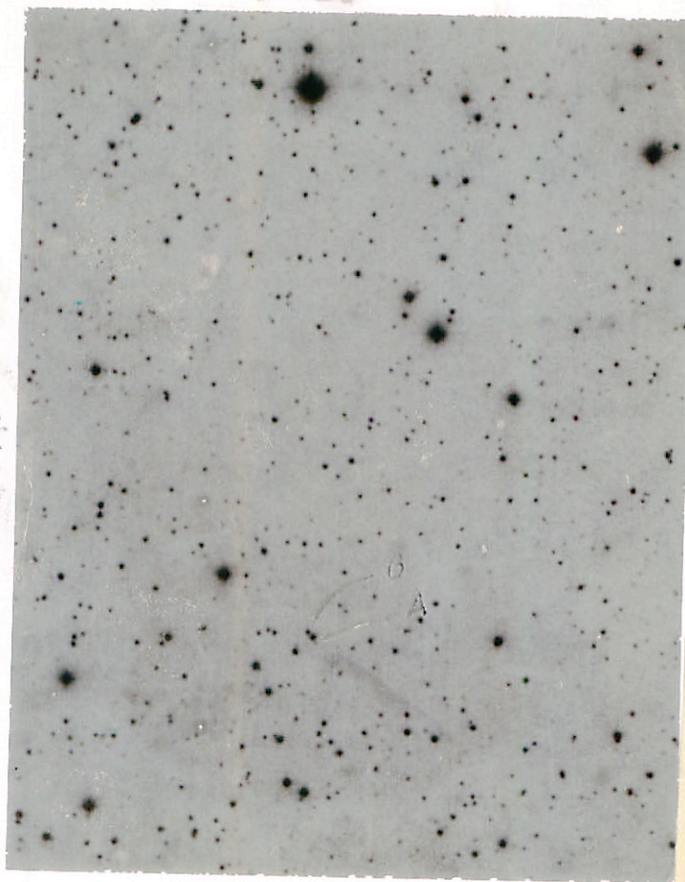
16-3-15.11



1500 ft. road

~~W.D.~~
W.D. 15-3-15.11
1500 ft. road

... N



E

O
A

287-29/59

434