

6280
646-92-578-445

15 41 30

-20 08.5

13087164



59 00-20 08 1/2

140 de 144



NGC 7142

21	44.7	45	35	1900
	.2		36	1962

U10610

POLAROID



830

6-9



E

S

Handwritten red text, possibly a signature or name, oriented vertically.

HL 70076
 1300 for 3, 35, 1501
 4-15-52 642 1950
 4-10-52 1867
 +27 14
 +29 115

Handwritten black text at the bottom left corner, possibly a date or reference number.

9 41.10-64 16 19.75 0.89



146
356

3565

N

9 41 36
-64 220
16 19.75

1448 1055 1055

||
LPM 342 L 17-47

10:14.3 - 82.23

12.4 0.54 302

Cordoba 60 inch yellow

NGC 2451

1950 γ^h 436^m

-37° 51'

234 93 +0.07

47^m 303 -37 54

121 8.26 +0.07

55 40-538.76 E

HD 62974 -

HD 62992 -

53 7.77 +0.01

45^m 20^s -37 52

176

10' 10'

M

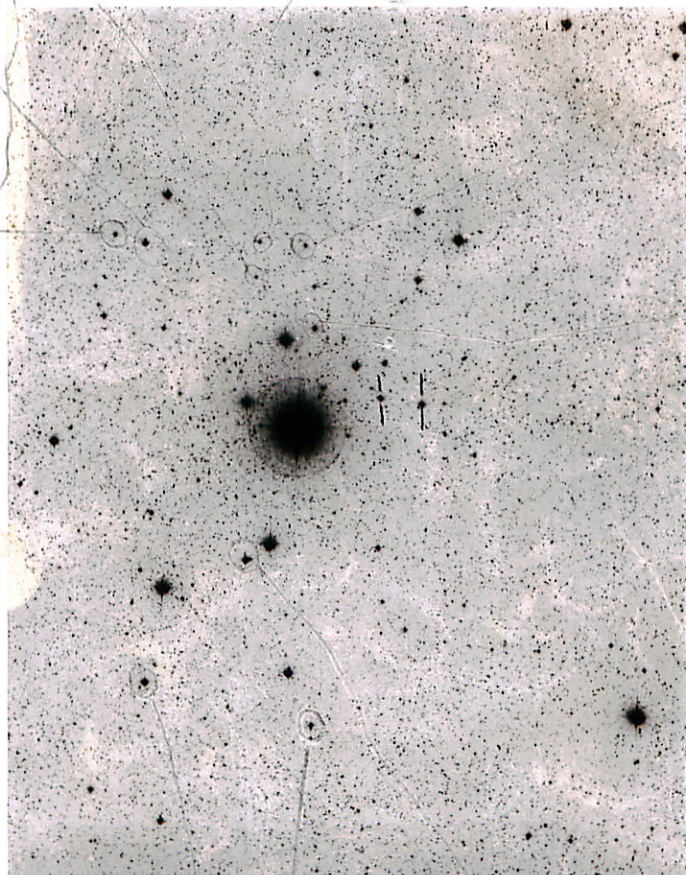
10.5
10.1

177 2.1 -0.03

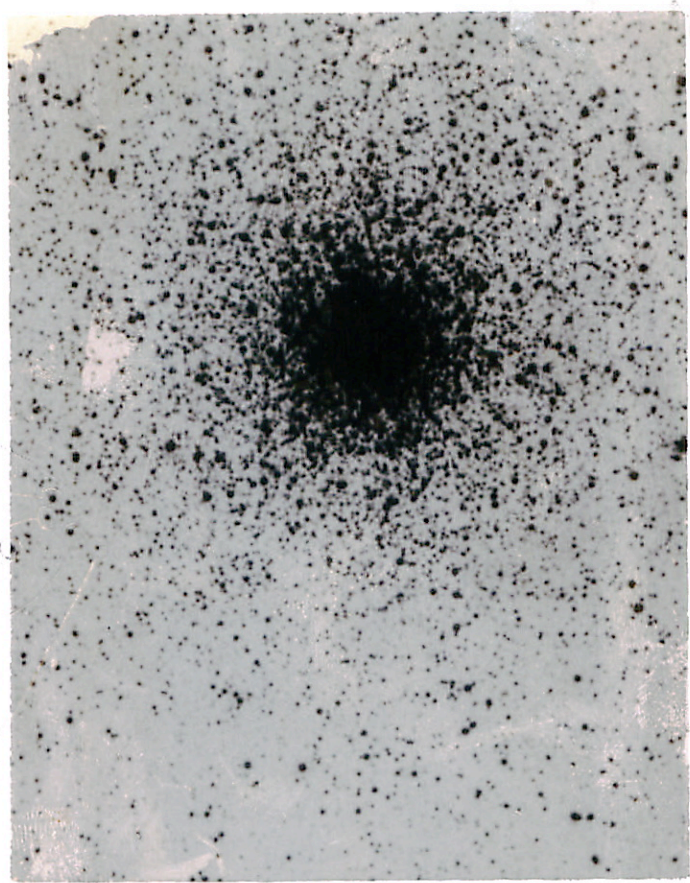
14 93 +0.17

N

10 94 +0.5
8.5 +1.2
129 S



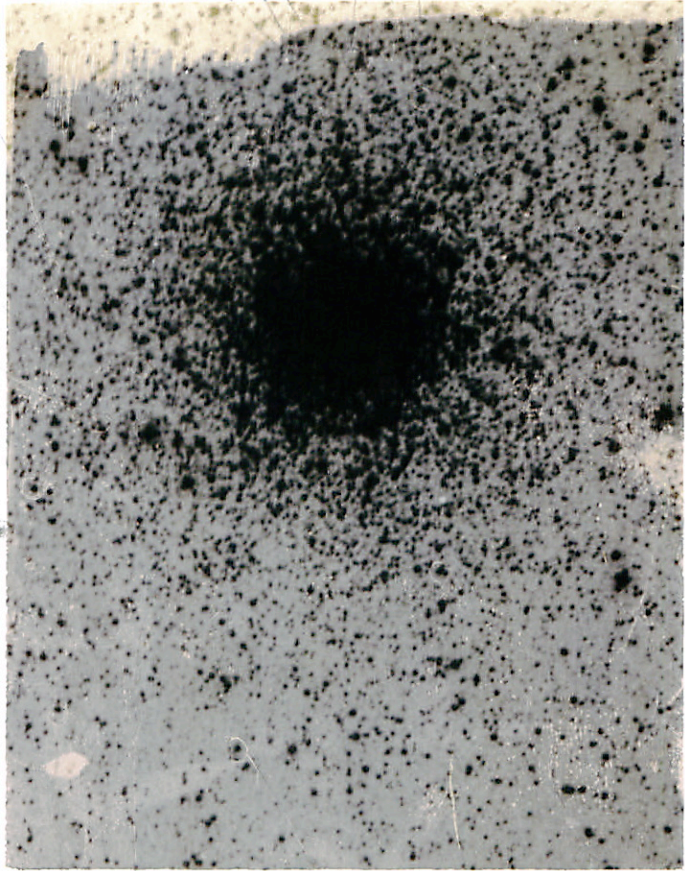
11



N

BR 19 - 319
 04:50 - 87:15-6 (local)

447



VII 197
S.V. 197
S.V. 197
S.V. 197

197
197
197
197

197

197

197

197

197

6623

339-106

3401

16 33 45

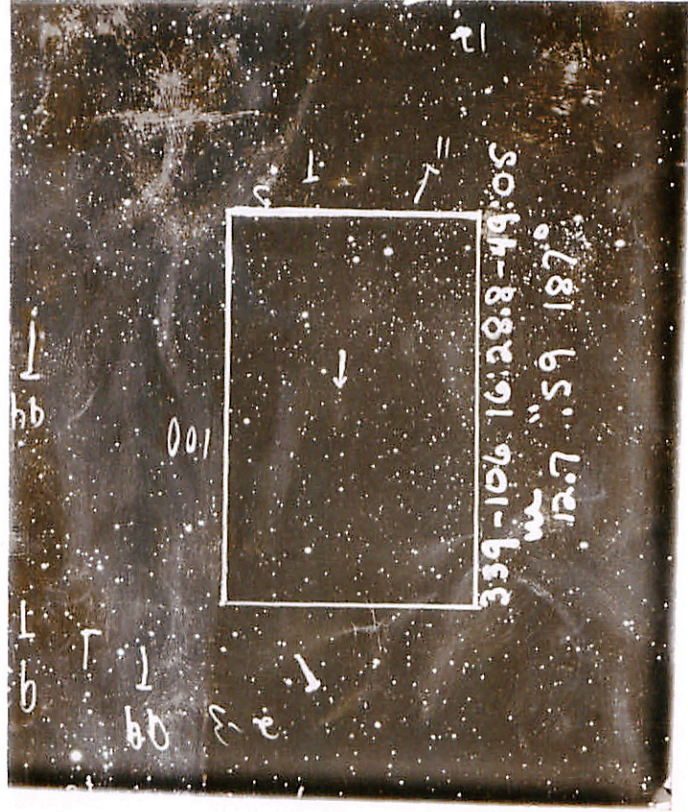
11.0
-49 13 ref

$\pi = .050$

Done

16 32.5 -49 11

146 k 0.59



L-1003-16

S 21:51.5 - 1:31 (50)

14.7

W

Q

F

blue

②②

6662

✓

339-19

Red

$r=0.5$

16 38 28

-45 56

1.70-1.75

16 37.3 -45 54

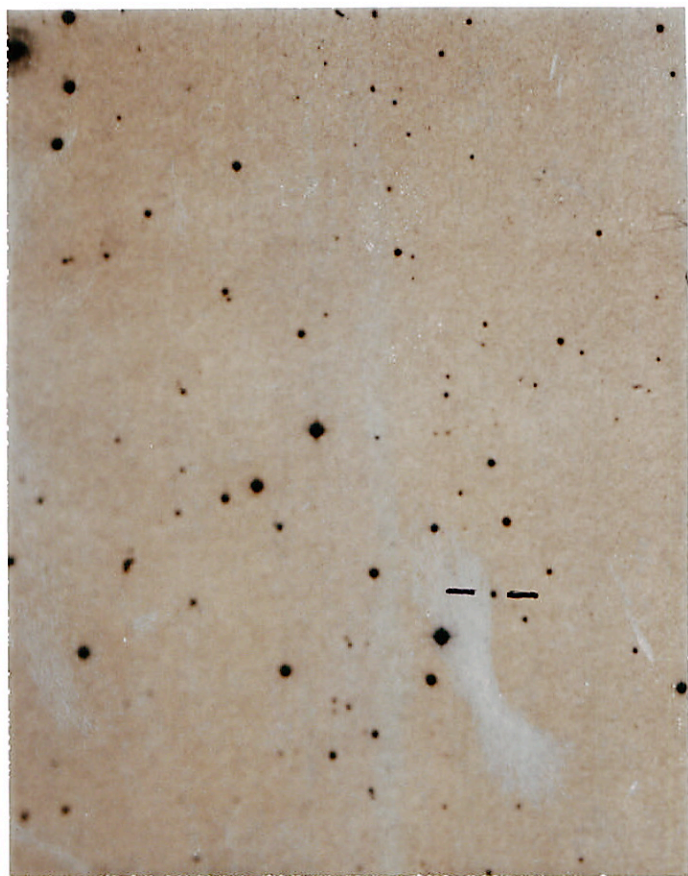
14.490.53



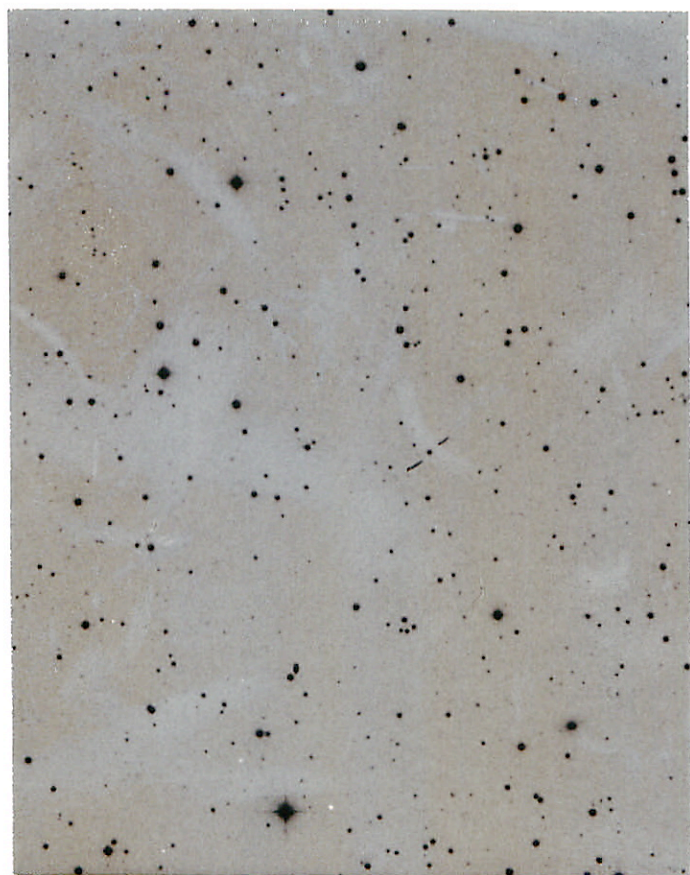
12. 11. 1953 - 11. 11. 1953



1953. 11. 11



1-8

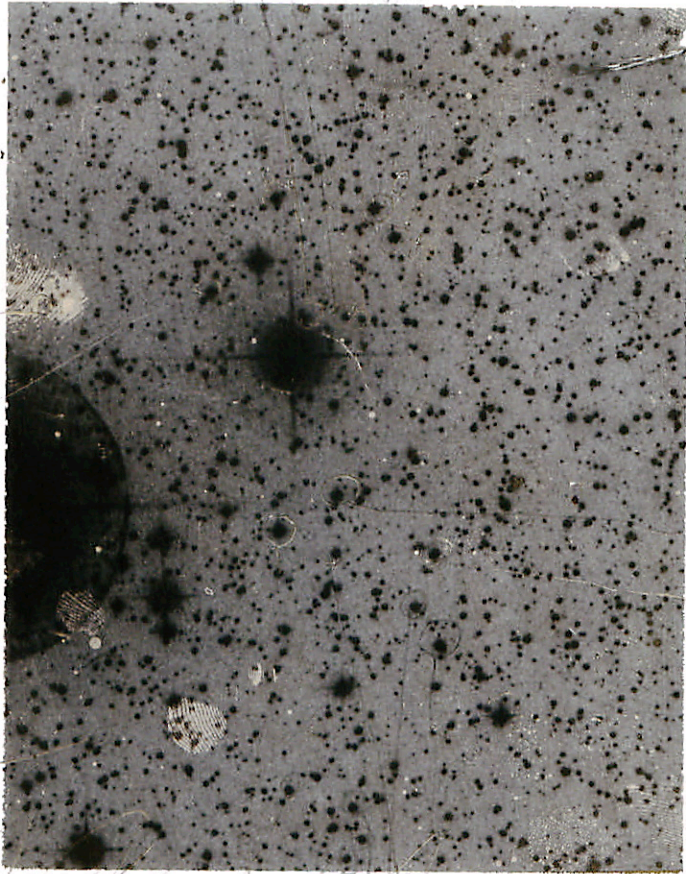


71

N

LB	378	08	+ 19
	81	33	28

Handwritten scribbles at the top of the page, possibly including the letters 'S', 'V', 'W', and '7'.



1307
177

1308
177

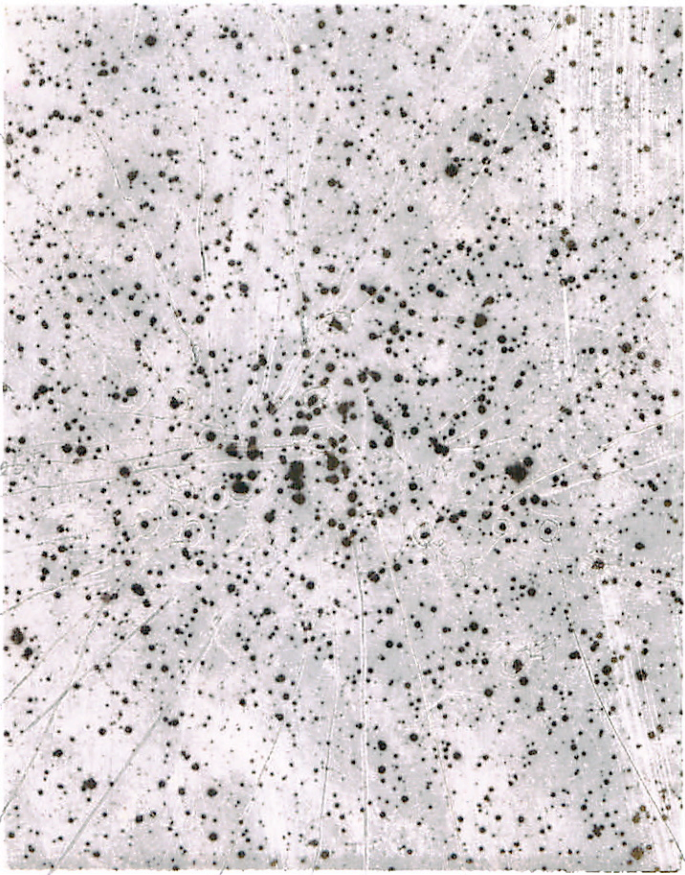


Handwritten notes and diagrams at the bottom of the page. On the left, there are several lines with arrows pointing towards the right, accompanied by the letters 'A', 'B', and 'C'. In the center, there are labels 'AE', 'AB', and 'AC' with arrows pointing downwards. On the right, there is a circular sketch with an arrow pointing upwards towards it.

124

241
100

147/11

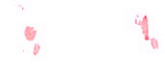


351
101
106
11
47
LS
11
55
10
16
13
13
13

147/11
100
101
106
11
47
LS
11
55
10
16
13
13
13

02 3' 146A 7

2230





712 21 20 - 46 26.5
12 20.5 - 46 21 14.2 R. 74

LTT3323

532-21

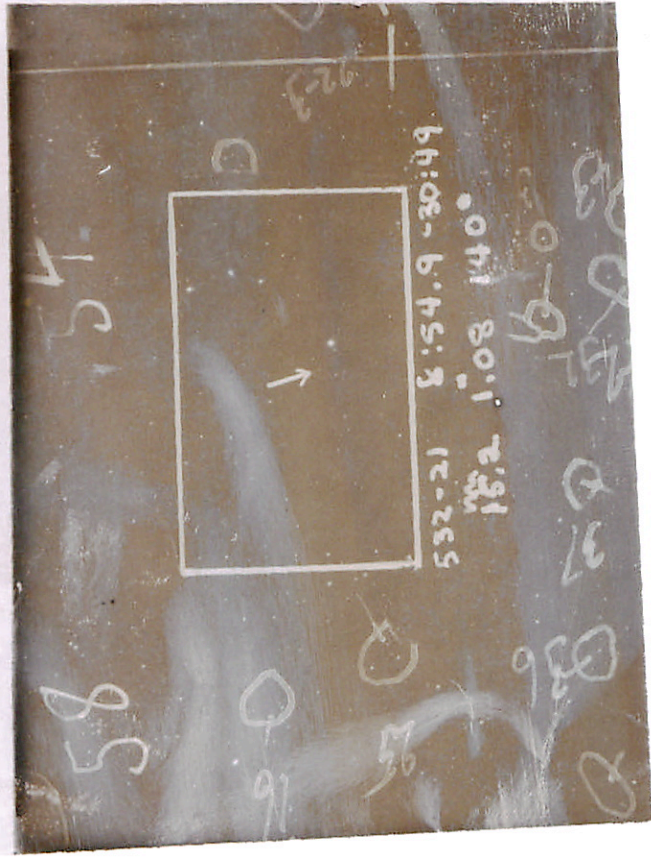
8 57 44

-31 05.5

Handwritten signature

8 57.0 -31 02

50 k 006





4836 2nd hand

677 2766

7 12 13

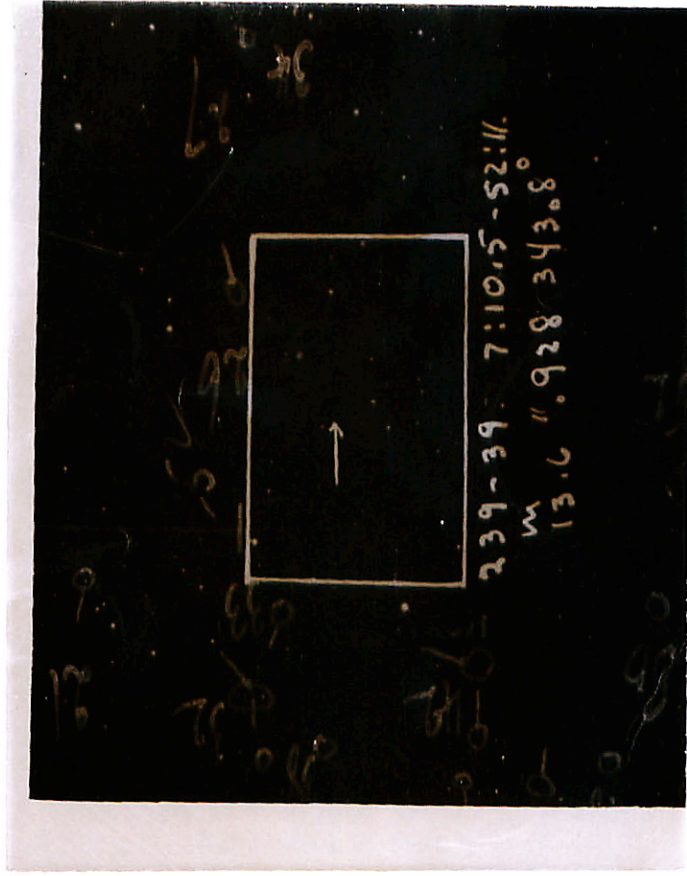
-52 17.5



Handwritten scribble or signature.

7 11.6 -52 16

13.0 R 093



2TT3534 ✓
628-39

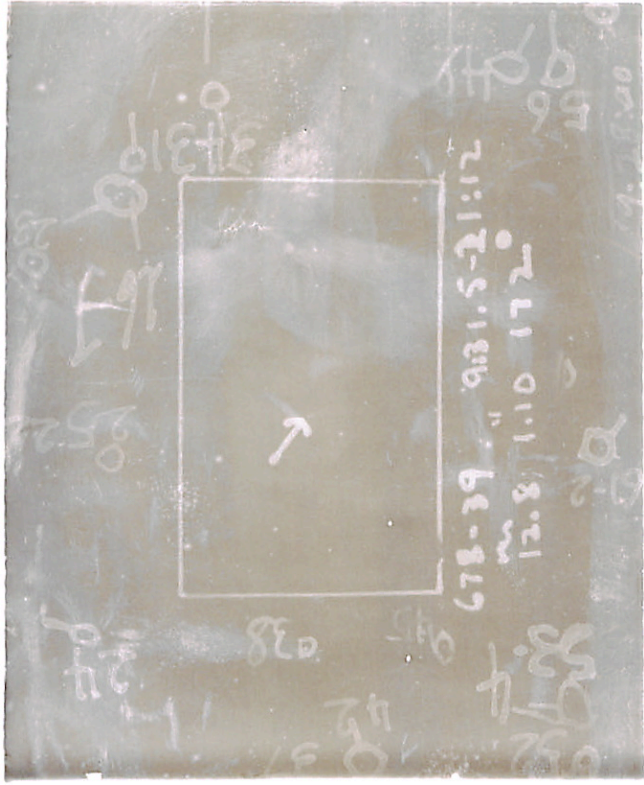
9 34 40

-21 29.5

[Handwritten signature]

109241.56 + 11.5

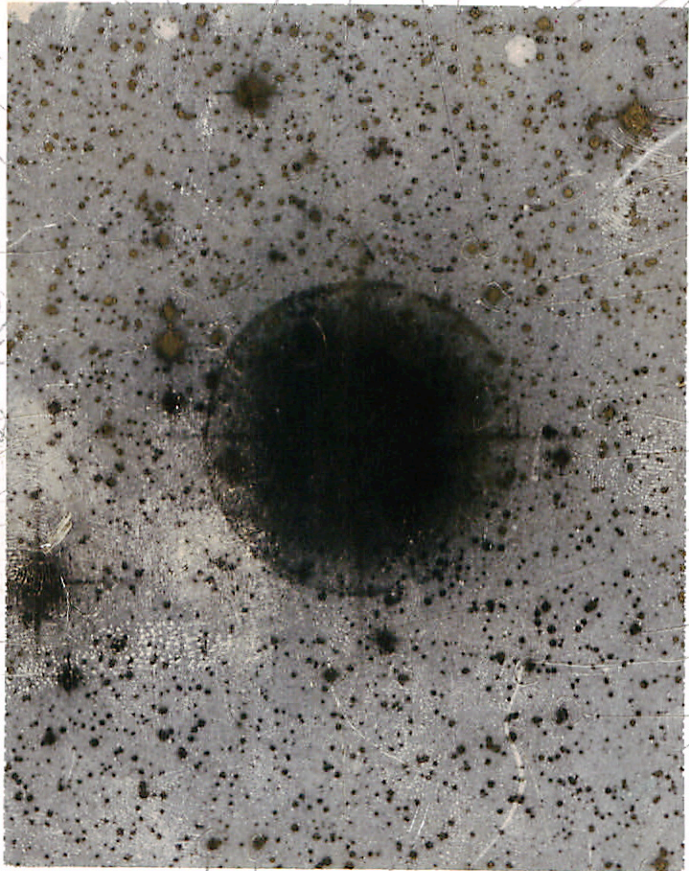
4 334 -21 25
12.7 R 1.10



36 35 ~~34~~ 34 29 30 (17) (16) 161
161
161
161

32
(31)
26
(20)
24
~~23~~
(23)
24
→ 1
(3)
A →
2

X5
18
(4)
X3
11
(12)
*
X4
9
(8)
X7



(4) 5 N
*
(33) (4)
(6)

15 5 28 -36 50 1350 do
53.2 57 1902

POLAROID

18 52	30	+ 2.1
	+ 25	25 2
<hr/>		
18 52	55	

+ 36° 48'

5/2 = 2.5
K₁ = 2.5

- 0.105

- 0.105

5.52 - 14 - 65

M 10231

0211 - 02 28 + 3.22 21

0211 - 12 28 - 1.22



487h

✓

136 90.22

11 16.5 - 75 27

→ 11 17.06 - 75 32.5

5 27
55

4489

757-79

12 02 02

-16 20.5

[Signature]

12 012 -16 15

12.380.58



8831

92-356

10 24 32

17 48

10 23.7 17 43

127 0.5



753-28 10:213-17:28
13.0 85. 292
0.31



105
106

108
109

107
106

Red

345-168 = 4169

11 15 15-43 545
 69 11 145-43 49 148 h 0.51
 66 11 141-43 46 150 spm
 345-109
 3180
 355
 345-168
 LT 4166

1937

3484

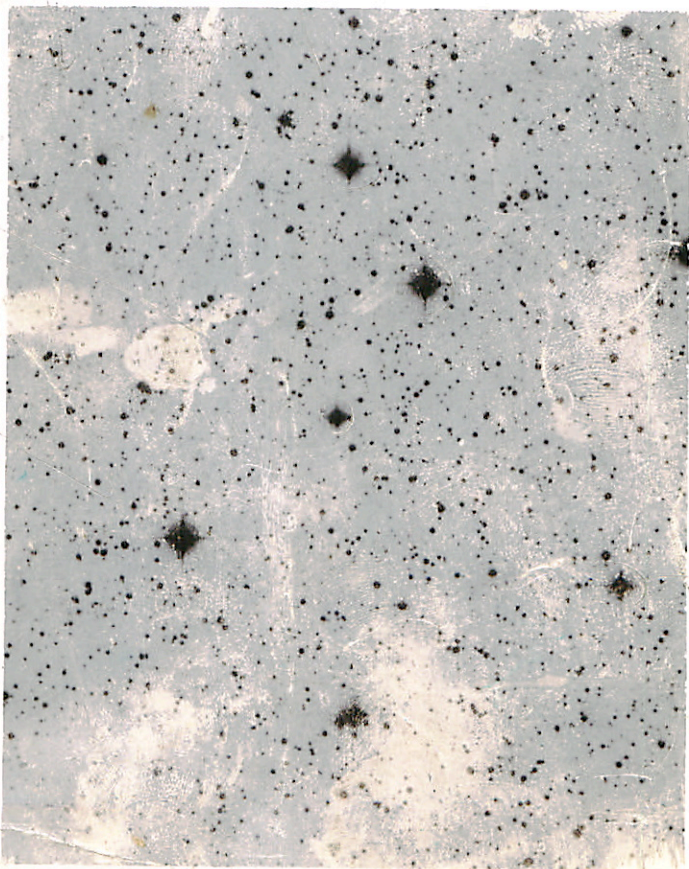
1950 17" 41" 41"

(1900) 44

M, D

54

3484 7.12.41
 3487 7.12.41
 3494 7.12.41
 3498 7.12.41
 3500 7.12.41



1937

1937

N

1937



25-55

→ 12 32 49 - 54 O.V.S.
12 314 - 53 59 156 O.V.S.



✓ 4256

→ 11 30 09 - 61 325
11 39 14 - 61 27
149 R 040

G195-B4 A-B
09 36 33
+54 57 12

N



E

5483

197-165

14 01 40

-58 14



Red ✓

14 00.5 - 58 09

14.9 k OM7



6524
6529
6529

843-53

10/16/53
16 28 (12)

-14 33 349
327

16 277 -1433
1412057





1977.12

→ 13 5718 -57 52 5484
5481 13 563 -57 47 132 5 036

5889

47887

14 47.5 -37 20 1304-5 0.26

⊗ 18

← Ray

✓ Wave

13.24 + 92 + 36 ②

old

0-0

58

⑨ 9.0-20

48 57 -36

14

I 529

①

✓ Check

17.5 FF } 69"
17.5 FF } NF

-37

14

LDS 507

14,16 + 84 + 28: ④

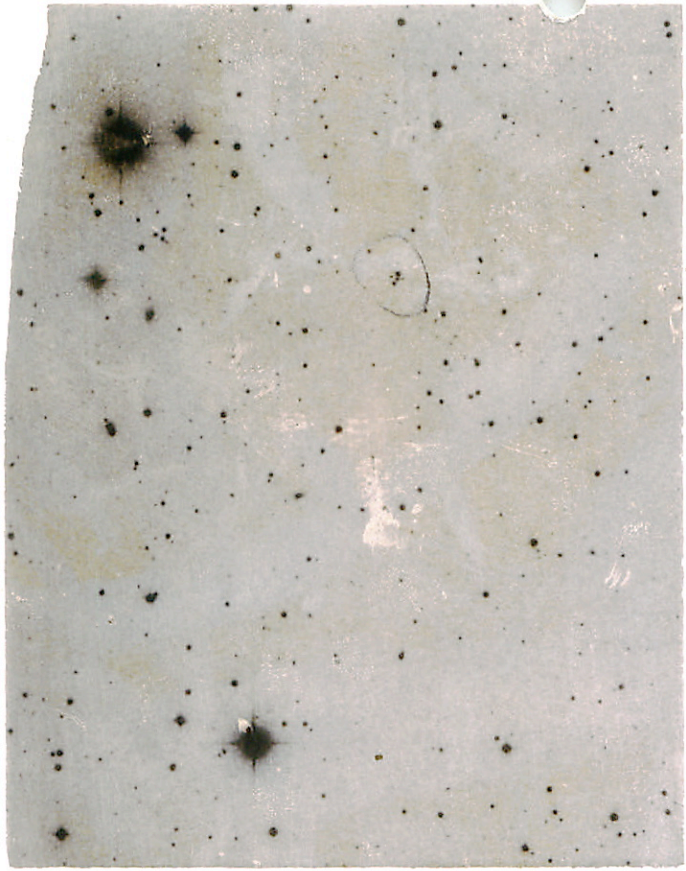
7.55 40.48 0.00

①

✓ (0.0-0.0)

20208.1
← N
← E

88/88



6035333

6035333

Bought near to
AGK₂ + 14° 961

08 52 44 }
14 14.6 }
1964.0

08 51 52 }
12° 18' 6 }
1950.0

30208.1





X

11

N



NGC 7142

21	44.7	+65	35	1960
	.2		36	1962

J10510

POLAROID

830

9-9



1 mm = 12"

S

86:283
@ PD



N

BR19 - Big
 13:04:50 - 87:15-6 (1950)
 13^m on 1911 Apr 26
 Nov 2.