

-0027 +091 545

-00335 +094

-0315

-5027 +094

-0110 +015

-0027 +0125 ±3.0  
-00335 +015

2135

6

59.6

-51

13

41214

5-66 to 21 - cage

3.9

115 230 529 2855 545

244 906

-14 935

+5.8 to 9 phd

2138.000\*

5.000\*

59.600\*

-51.000\*

-13.000\*

-0.027\*

0.094\*

3.900\*

60.256

5.300

0.446

0.170

27.804

0.115

-0.862

2.352

-0.049

-0.478

-5.455

+60225-0325 +6023-081 2.5

+0993

$\frac{+102-036}{2}$

783 . 1.23 2 58.2-24 04 24

R454

5.44+23

(3.1)

-19

1342R85B.2.823 Stalk

346

2001 6/16

883.000\*

2.000\*

55.200\*

-24.000\*

-4.000\*

0.102\*

-0.036\*

3.100\*

41.687

28.800

0.161

0.399

18.206

-0.441

-0.264

-25.978

0.206

-0.878

-16.732

125m

717

15257

-0711

~~0011~~

0085.2 -0505 5.15

-011-084

9479

2

25.2

+25

26

5.30 + 0.30 + 0.10 255m

211 780

~~178264~~ ~~1744~~ 2762 178211 7802762

-14 773

3.15

-2486 13peta

717.000\*

2.000\*

25.200\*

29.000\*

26.000\*

-0.011\*

-0.084\*

3.150\*

42.658

-24.800

-0.091

0.735

-22.085

-0.199

0.480

-20.362

-0.337

-0.480

-2.476

Reckman Year 2

Sp + 13.37 + 0.61 - 0.02 = 13.96

16.23 + 0.25 = 0.88 28 Mar 71  
14.55 - 0.14 - 0.95 26 Mar 71

13.75 - 0.125 = 0.88 16 Apr 71 10:00 PM  
14.06 - 0.12 - 0.95 17 " 1 AM

21-1 10.38 +0.32 +6.07 24  
10.32 +0.38 +0.03 17 Sept 65 (over)

10.35 +0.35 +0.05

-3 13.96 +0.11 (+0.27) 17 Sept 65

14.02 +0.12 +0.13 17 Sept 65  
13.94 +0.115 +0.13

-4 13.12 +0.08 +0.19 17 Sept 65  
14.00 +0.06 +0.23

over  
-7            +0.07 +0.21

-8 12.16 +0.21 +0.12 17 Sept 65

-10 11.50 +0.19 (+0.25) 17 Sept 65

11.54 +0.17 +0.12 17 Sept 65  
11.52 +0.18 +0.12



21-2 13.08 +0.20 +0.09 24

-7

-9 9.99 +0.36 0.00 24

W X Can

1309 10.1

✓

13 09 37 - 63 08 1450

WB

11.9

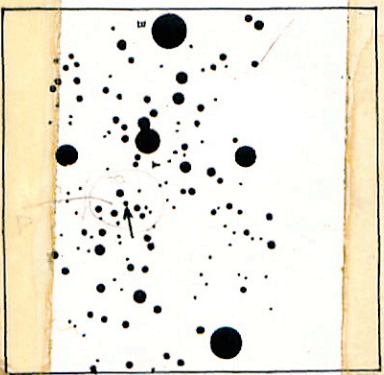
13 10 40 - 63 03 03.5

13.5 - 14.2

5 P

15 Nov 1966

13.43 - 10.40 - 0.70



W X Can

0014

RR? 13.5-14.3

N.A. 90, No. 5, 1934

74" 17/1/68 Condensate

13<sup>A</sup> 10 48

- 630 14

not incl corr.

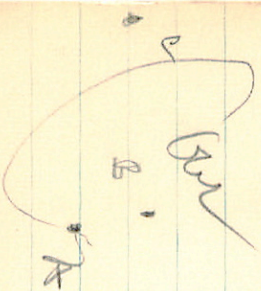
9447 → 23 14 57 -40 58.5 2  
23 14.0 -41 04 13.1 -0.26180°

A 84

→ 3 15 03

↳ 15 23  
A 84

56.4  
57.3



S

B'

10

A

6 C

.

o

m. m

7 Cham -78° 373 5.16 -0.10 8 43.0 -78 47 +040 +019

-78° 375 9.38 +0.04 43.5 -78 52 -030 +044

-78° 377 10.06 +0.45 44.1 -78 58 -052 +056

Phu -78° 378 6.04 +0.24 45.0 -78 53 -032 +037

m. m	00	5.51	-0.10	-0.34	} 14 2069	
2.75	<del>1.95</del>	7.43	+0.14	+0.07		E = +03
5.40		10.17	+0.55	+0.01		S = +06
+	+0.6	6.07	+0.24	+0.13		

3  
2  
5

LDS 582

16 57.9 - 24 14 10.2

NO  
240"

13.0

•  
•  
•

16560 75-109/113

•  
•

16558

•  
•  
•



L-OS 641  
LTT 7353/4

18 27.8 <sup>14.50</sup> - 42 24 <sup>15"</sup> 9.3 69 0.21  
11.4 65

417-181  
4) 990 4/6-136  
4) 441 4/6-125



10-47

0 040

-83

38

14.7

70.8

0.17

①

hD698

3 25.5 -44 30

100 SP 41"

150

0.15

A 31454 -45<sup>0</sup>420

300-141

B 31452

300-142

LDS 48

1 24.5 -47 42

14.0-14.5

55 50"

0.12

30690 274-53

•

30691 274-52

→ • • •

•

• ←

104129

6.655 315 617

B5-34

11 583 -46 20

6.410 +0.175 120977

6.36 +0.15 301977

6.35 +0.16 3mg77

6.37 +0.16 (3)

57

12 47.5  
+7 46  
47

12 49.9  
+7 48  
1450

-015 +011

80 2654

A -008 +025 Y1  
- ? - 14

HSI 2621  
AB 840 34.7  
"

-015 +018

AC 1300 38.5

-027 +016 A

Herakles 2621

-022 +020 B

-020 +037

017  
24.8  
-24.7  
24.7  
-23.9

34.5  
33.9  
3.6  
2.11

Herbert S.F.W. Memoir BHS VI 1833

An elegant Turp. var.; squaroid

triangl; side = 40" ↑ Aug 0.5

Δx 49

Feb.

6.6

+80 2654

2655

AO

1907

37.8

3.0

~~2.2~~

2.2

AO Δx 0.8

Δx 14.5

AO

1907 - 29.8

1956 - 29.7

-23.9

-23.9

LT 934

14206 -67 27

LT 158

✓ 416 -67 32 1472605

L48-54

13.91 +0.44 -0.44 (3)

Do pull ~~⊙~~  
148.54

Red



6-75-39 02 44 43 -2 35.5 15.6 0

6-D 34 *opp* 02 45 57 -02 05 16.5 -1

6-D 37 02 55 17 -02 20 16.0 0

~~6-D 39~~ 03 02 15.14 +0.55 *+0.14 act 14* 15.5 2

~~6-D 40~~ 03 01 06 -01 30 15.54 -0.03 *-0.65 act 14* 15.05 -1

~~6-D 41~~ 03 02 15.26 -0.25 -1.19 *15.0 act 6 40"* ~~47.5~~ 47.5 *15.42 -2.27* 17.0 -1 *2000*

6-D 47 15.30 +0.15 40 -0.59 15.0 act 6 40" -03 29.5 15.0 0

6-D 48 03 41 50 -13 25 16.0 0

6-D 50 13.98 -0.16 -1.16 *15.0 act 6 40"* -01 05 14.0 0

6-D 51 14.41 +0.33 35 -0.56 *15.0 act 6 40"* -13 41.5 15.0 0

6-D 55 03 53 10 -14 22 16.0 -1



G039 15.14 +0.55 +0.94: 16 cent  
15.08 +0.53 -0.20: 17

G040 15.11 +0.54 -0.08  
15.62 +0.02 -1.0327 15 cent

15.54 -0.03 -0.80 16 cent  
15.54 -0.12 -0.94  
15.56 -0.05 -0.92-46  
14.75<sup>200</sup> -0.25 -1.19 15 cent  
14.85 -0.24 -1.20 17 cent  
14.92 -0.27 -1.07  
14.81 -0.25 -1.10

47 15.30 +0.15 -0.59 15 cent 66

50 13.98 -0.16 -1.12 15 cent

51 14.91 +0.335 -0.56 15 cent

577-72

23 52 20 -38 27  
23 51.5 -33 33

W.S. +0017 " W.S.D.  
13.7 +1.2359

↑ N





6.84 + 0.10 + 0.11

A (HR 164) 00 37 19 -73 20

F 00 38.12 -73 25 7.82 + 0.92 + 0.60

HD78661

6.50

REW6003 +.34 -.09

50 { 9 07 06  
+11 46

(FM)

Long UB ~~score~~  
(.14), Res out.

60 { 9 07 36  
+11 43

(Pc Pd)

Pc PC 6559

~~Roberts~~

Don

-15.8(b)

~~Roberts~~

9 Feb

"081 M

Roberts

L49-32=26-23

BPM 15727

23:34.6 - 76:20

14.8 "26

23 38 42 - 75 57.5

2 147-0.12



49-32

50 ~~55~~



L 266-18

BPM 24074

16:14.5 - 50:38'00

16.1 .168 196

Brueel blue



L 250-39  
BPM 20364  
10:49.9 - 53:32'  
12.9 .127 143

Bruce yellow

L 266-64

BPM 24163,<sup>00</sup>

16:19.8 - 51:47

15.2 .075 263

Bruce blue