

✓ 10 55 ~~10~~ -7 15 1950

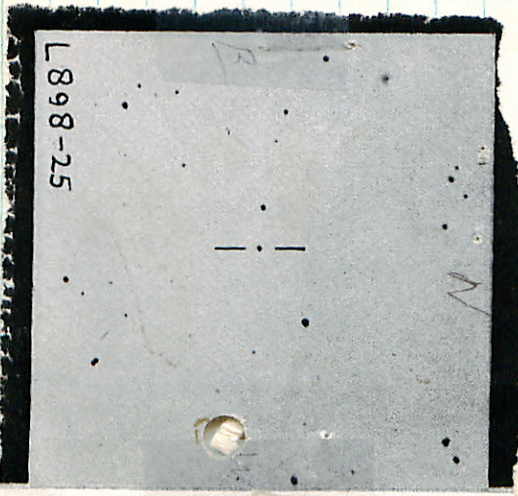
~~L 895-25 10 55 45 -7 19 1963~~

4.3 w.D.



ADD 7609

9 58.1 +06 26 80 32411 F



L 898-25

EX Cgg

19

48

42

50

28

+30

51.3 1855

58.3

52

26

+31

6.0

14.0 - 15.3

50

7.5

4.85

55

+31

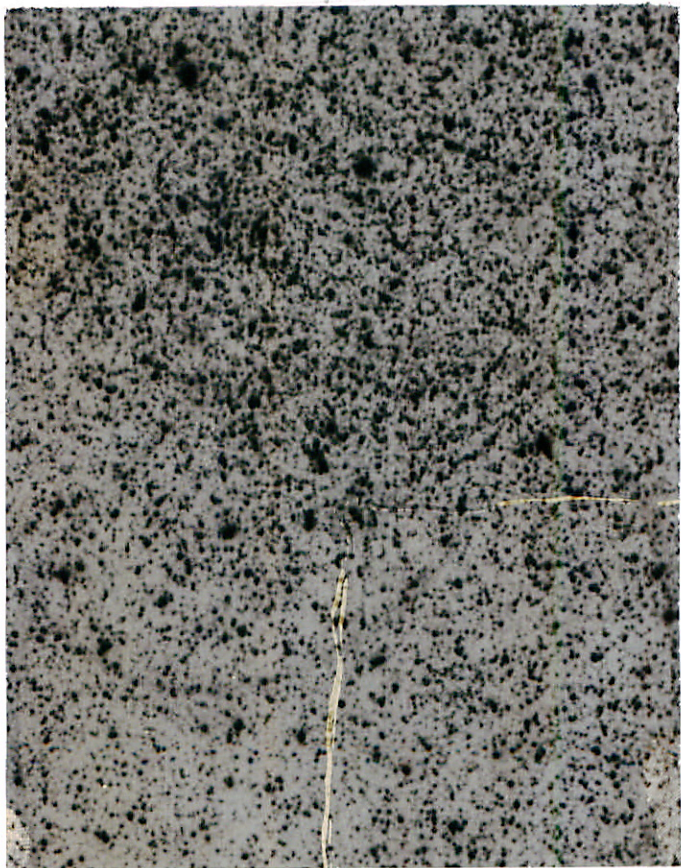
7.8 1962

Some with 20.15

199.1928

1000

3 - 10 - 14



1000

1000



CS Mon

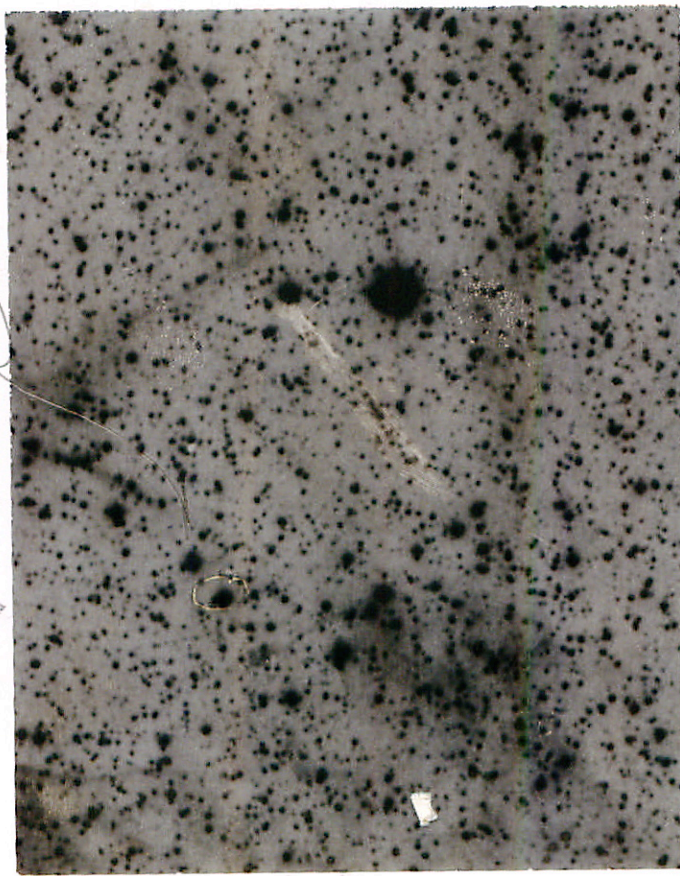
OL 26 47 406 43.2 1900

A.N. 252 389/1934 29 29 406 41.2 1950

1/18 Uni Uni 30 01 406 40.8 1940

Lid 30 07 406 40.8 1942

N



(A)

(B)

↓

CS Mon

5

QY Cypg

53	35	15.3	1855
19	55	14	437
57	03	22.5	1500
		30.5	

149-15.5

3.90

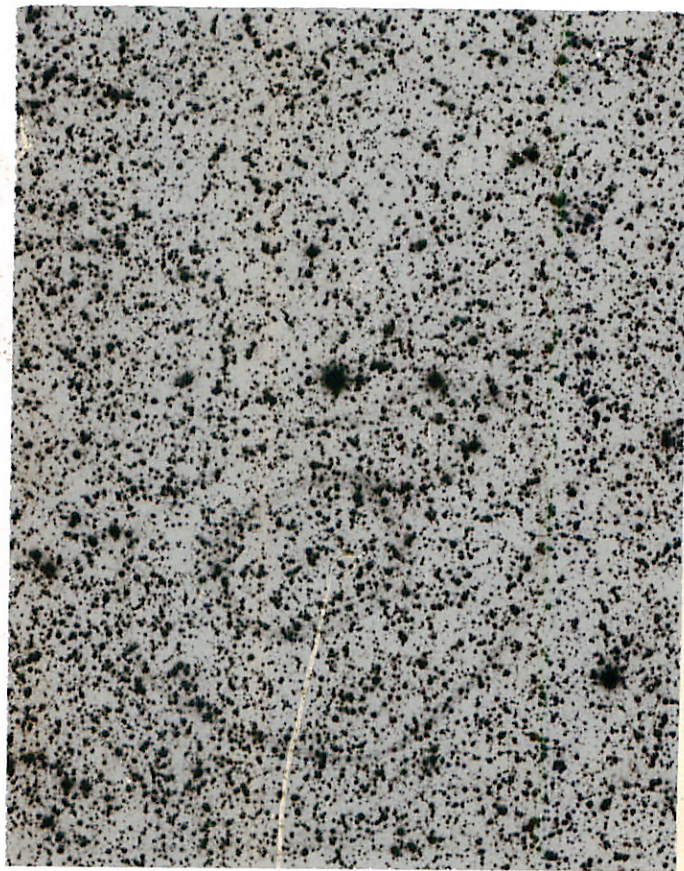
28

38.4 1942

QPN 10" Archival

9-0

N



11

→ 9100

ADS 48

+4504406

(As) 0

03.0

+45

32

1950

(DE)

02.5

+45

31

1950

drk

8.8

03.1

35

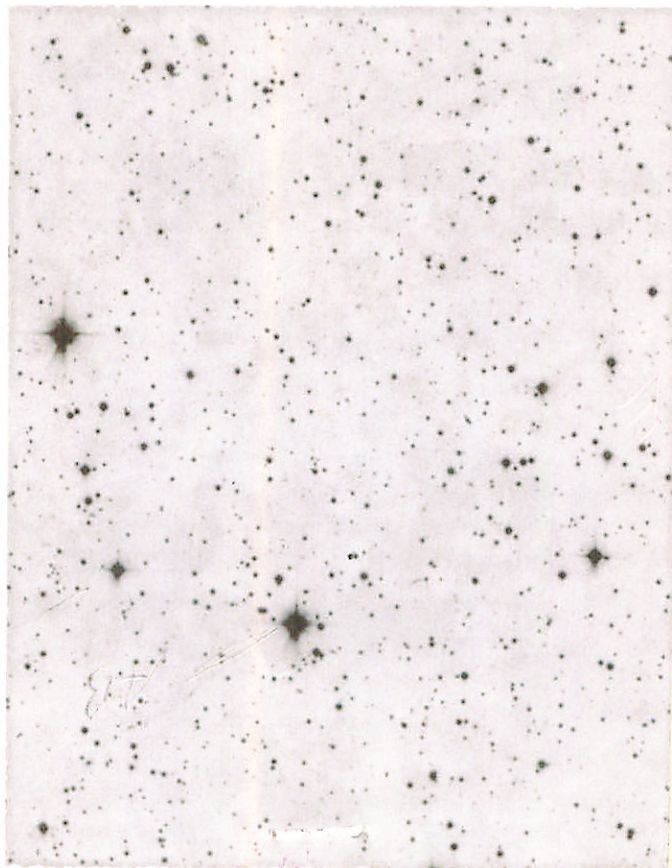
1941

dmu

8.9

16.0

F 9.1 } 330"



41901185 ^{W/207} 6 00.84 419 2295 1550 8

01.00 2215 1542

Group 1 23 29P

A1 9.3 } 7"
R3 12.8

NS 2-2340

100" Ref

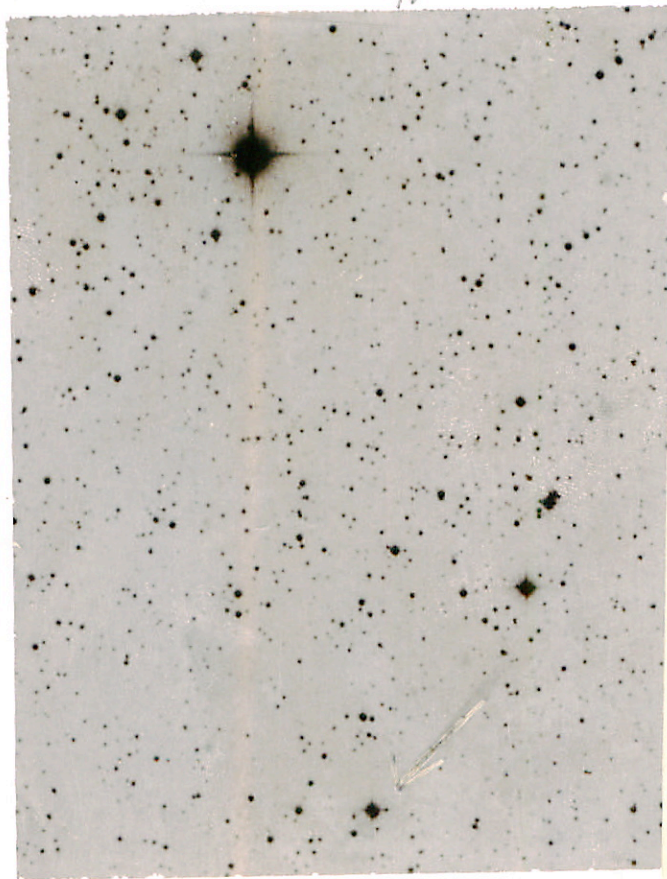
G 100-564

1 more

~~W/207~~

2

207



7170185 G

C 44-32

10

39

14

414

316

1550

39 52

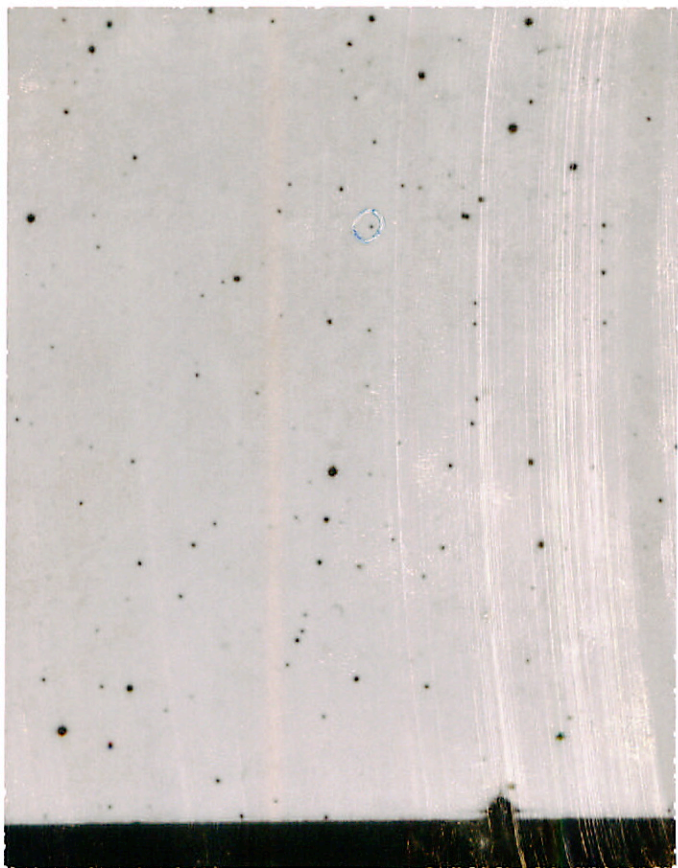
226

1962

15.4 W.D.? Van.?

0-10-11

N



27

114-22

+00281

1 41.9

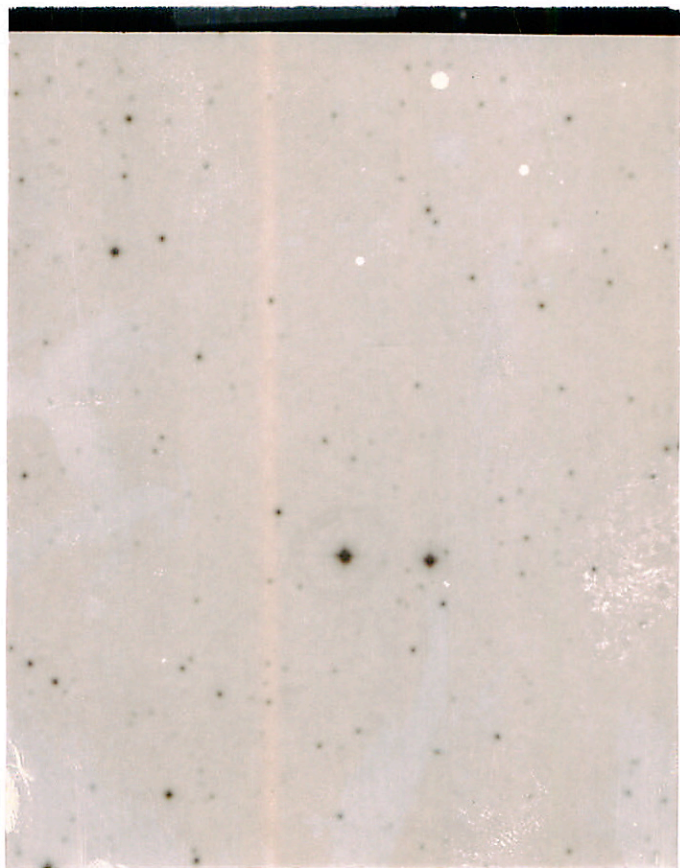
+1 08

1550

10.5 } 14 "
126 }

1111

1111



1111

1111

LB 1497

3	49	53	424	51	←	1963
3	49	06	124	472		

Plurals

U.S.D.



1 mm ~ 25"

B-8-26/27

4

11 07
17 28
410 58 1855
414 12.4
414 14 1562

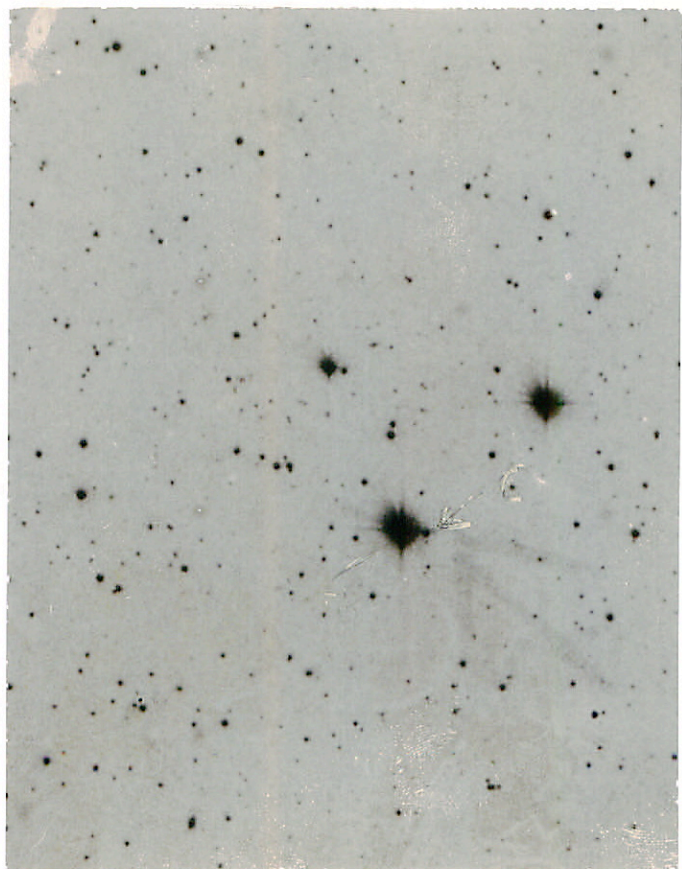
9.4 41

14.7 41

April

5 G 8-26/27





2301

52

G-39-27/28

40 24 2116


48	27	19	26	52	1850
	33	39	+27	03.9	1950
	34	27		05.3	1962

$\frac{9.1}{15.8}$ $\frac{1200}{-1.0}$ } M 0.36 September 120"

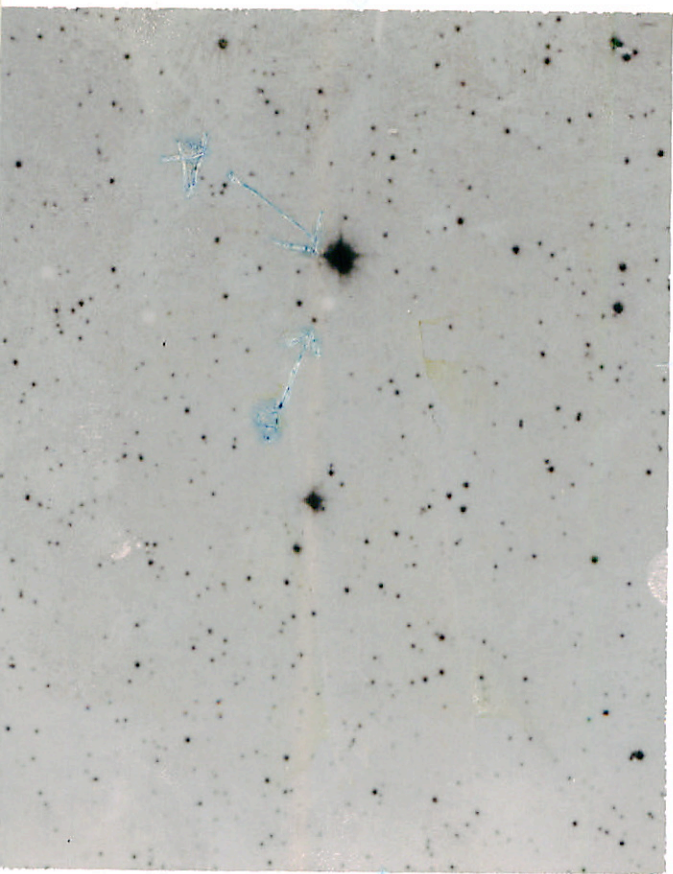
30+20 730 K2
 +244 -133

100" and 1 more

167-4



1927-12-29



V947 cph

17 57 11 705 52.7 1902

54199

59 37 52.5 1950

18 60 06 52.4 1940

12 52.4 1942

NY-148

2+

0.372

200

150

4

V566 cph

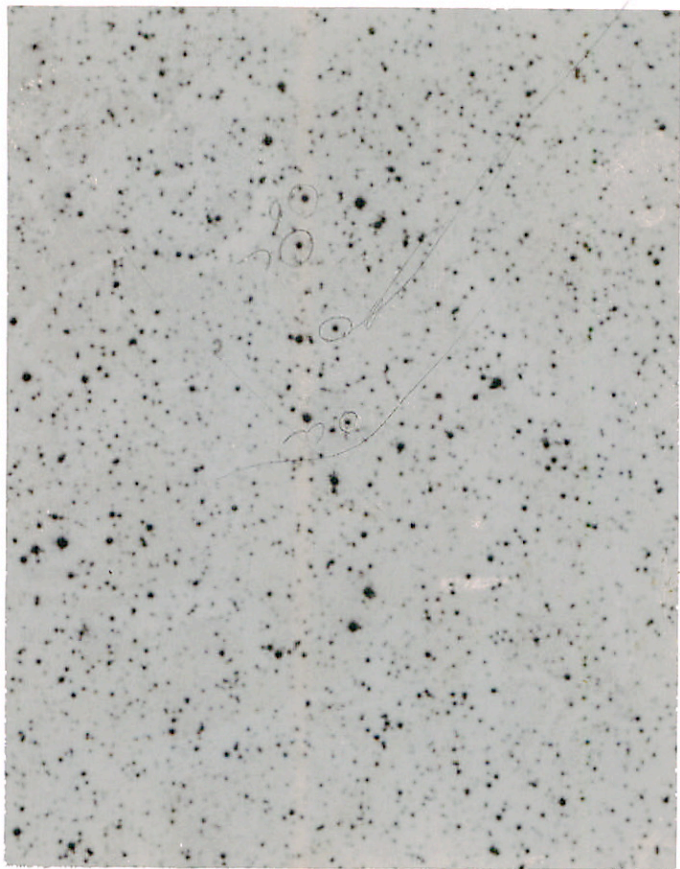
17 51 57 705 00.0

59 28 704 59.4

9.3-9.6 55 54.3

55 60 59 1942

412746.A



2
9

11

11

SS Ani

01 58.6 423 31.2 1500

+230274

02 07.05

~~486~~ 196E

2 49

0.41 10-11 P4

1 57 36 7-23 31.2
2 48

$\frac{14.5}{46.7}$
35

Vol U m.u
31

[Handwritten signature]

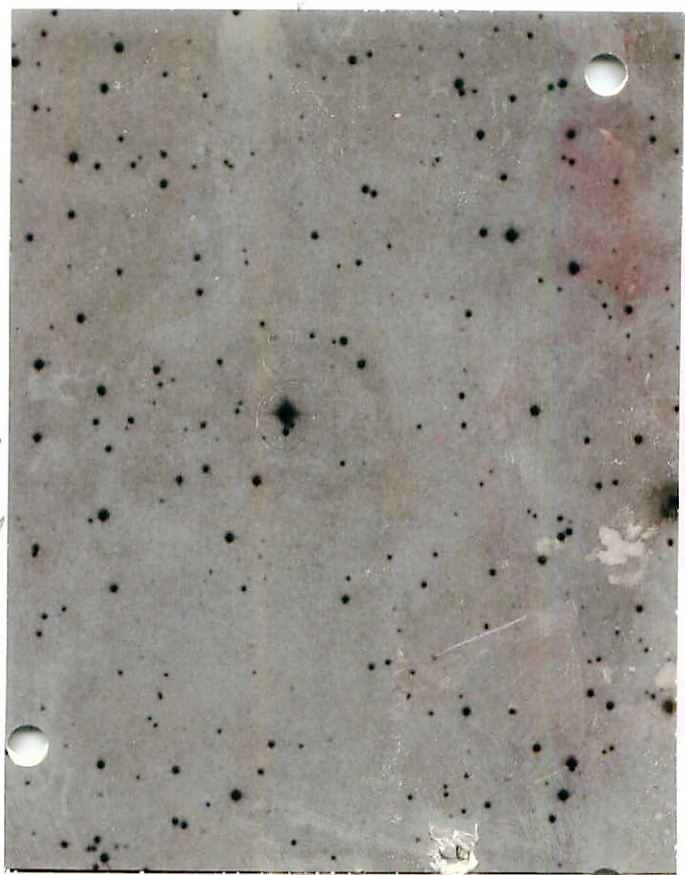
Var* 15

U m.u 306

PT num

6.6
3.3
2.9
1.4

1 47.5
2 46.4
3 46.0
4



V 963 cph	18	² 10	²³ 18	+06	46	1900
54217		12	43		46.8	1950
146 - 15.1	0.265	13	12		46.9	1960
			18		46.9	1962

VV

7 55

100
~~100~~

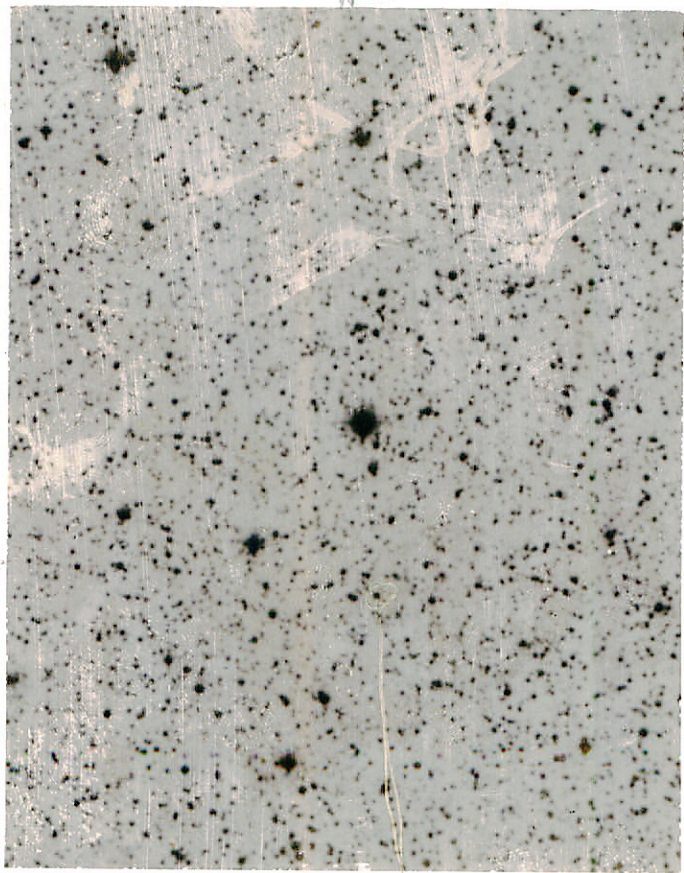
(2)

X Army

2000

AD5 11271 - 18 18.9 +3 21

5 } 28" 2550
11.6 }



V 963 Sp. H. 1

CF-1441

18 51 42 -38 39

12" } 13.76.100
216

DR
DR

0

24 2 Ma

13

40

54

+55

43.4

1500

$\frac{V_{in}}{V_{out}} = 13.1$

42

44

+55

28.3

1550

43

43

+55

24.7

1562

A.376

~~F569618~~

209

N

MY UINA

E



G-86-B1

5

18

26

+33

15.2

1550

→ 19 13

20.0 1442

V₂

13.6 +3

17.0 0

ml

