

V Ami 2 13 22 +12 06 27-83

R

8.65	+2.29	-	21	472		249	+0.81	23	472
8.83	+2.33	-	3	472					
8.53	+2.32	-	17	472					

Adri 2

12872 2 04 28 48 07 6.7pm

(180)

632-1165 1189 01/11/72
632-1162 1191 25/11/72
630-11675 1199 3/12/72
629-11655 1202 13/12/72

RS let

2 26 28

100

05.5

~~55~~

8.5

Ceph?

(NRV)

8.33	+0.96	+0.43	4:20 AM 22 July 72
8.49	+0.825	+0.58	4:05 AM 26 July 72
8.44	+0.88	+0.50	4:30 AM 4 Aug 72
8.43	+0.85	+0.42	3:35 AM 18 Aug 72

NRV
VOR

(NRV only)

R 501 1 25 37 -32 39 43 6- (2)

7.01 +445 - 21 Aug 72
6.54 +441 - 25 Aug 72
6.79 +449 - 3 Aug 72
6.61 +438 - 17 Aug 72

4.85 +1065 20 Aug 72
4.75 +101 23 Aug 72

R Ha

2 52

50
45

-44 58 may June
-50 01 42-143

6.73 +1485 +0.34 01 June 72

6.82 +1445 +0.315 25 June 72

7.03 +1.50 +0.24 3 Aug 72

7.40 +1.415 +0.06 17 Aug 72

P Riv

195

2

14

35

+24

57
56

22 →

18

near July 13

752 +1625 +0.81 21 July 72

655 +0.81 23 July 72

8.11 +1.72 +1.05 2 Aug 72

9.57 +1.74 +1.24 17 Aug 72

T let

00 20 15 -20

11 1594
~~11~~ 5-6

6.13 +1.705 +1.315 21 Aug 72
6.12 +1.698 +1.355 25 Aug 72
6.01 +1.77 +1.28 30 Aug 72
5.96 +1.725 +1.42 17 Aug 72

3.92 +1.70 1526.8

Norman
red

14284 2 16 47 40 -14 17 8.19 ml 14 var

~~(now off)~~

5.54 + 1.48 20 pp
6.03 418503 pp

779 + 1163 + 1177 21 pp
785 + 1160 + 1195 25 pp
797 + 1163 + 1199 3 pp
798 + 1161 + 11525 17 pp

Endpage 1209

7 45 00 -42 07 25-1265

5

W Pump

727 41745 ⁴¹¹⁹ ~~1085~~ 206771 ① 633 4068 18071

731 4179 4119 210471 635 4072 23071

740 41805 4133 24071

Miss Street

Norman
740

63308 ✓✓ 7 45 30 -39 59 645 85

~~63363 ✓ 7 45 48 -41 37 808 70~~

~~63384 ✓✓ 7 46 06 -41 26 697 82~~

63564 ✓✓ 7 43 00 411 47 849 89

Eri 2 46 28 -12 33 35 6^m 80⁹

6.82 +1159 +1375 21 July 72
 6.50 +1153 +1385 25 July 72
 7.03 +1160 +1388 3 Aug 72
 6.88 +11585 +1144 17 Aug 72

4.79 +1159 20 July 72
 4.89 +11605 20 July 72
 27 July 72 4.90 +1157 15 26.19

RR Eri 2 50 30 51 -8 22 24 24.8.6 929

7.23 +11575 +1122 21 July 72
 7.25 +11545 +1122 25 July 72
 7.20 +1160 +1305 3 Aug 72
 7.10 +11585 +1137 17 Aug 72

5.10 +1163 20 July 72
 27 July 72 5.16 +1158 15 26.19
 5.19 +1164 23 July 72

APR 5 gr ✓ 18 57 53 -23 45 9.5-11.5

88^{ed}

B ✓
✓ S

R ✓
①

SU gr 19 01 55 -22 45.5 8.1 V1
88^d

B ✓
✓

H0 76661 ✓ 19 00 26 -23 46 8.2 40

~~176572 ✓ 14 60 02 -21 00 8.9 40~~

~~176332 ✓ 18 58 50 32 -19 56 8.9 38~~

~~176316 ✓ 18 58 44 -22 55 8.3 40~~

~~176164 ✓ 18 58 04 -24 26 8.3 38~~

Full copy

19

44 41
46 23

433 54.7

48.0 1853

13.8 - 14.8

31.803

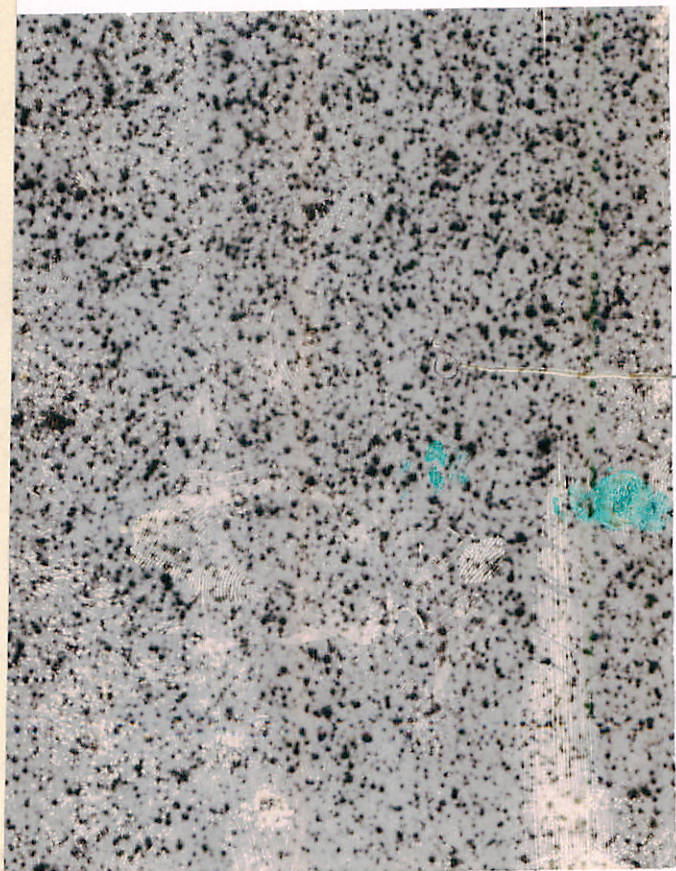
48 16

134 02.2

39 3.7

43 4.0 1942

Danz's 9 no 6



I W 644

11

2003 111 LI 43-200 1



2003 111 V

L7T 786 1

22 40

-84 11

0500214055511

RECORDED

INDEXED

WW Run 06 25 09 +09 17.1 1950

30 53 +09 15.1 1950

31 26 +09 14.7 1950

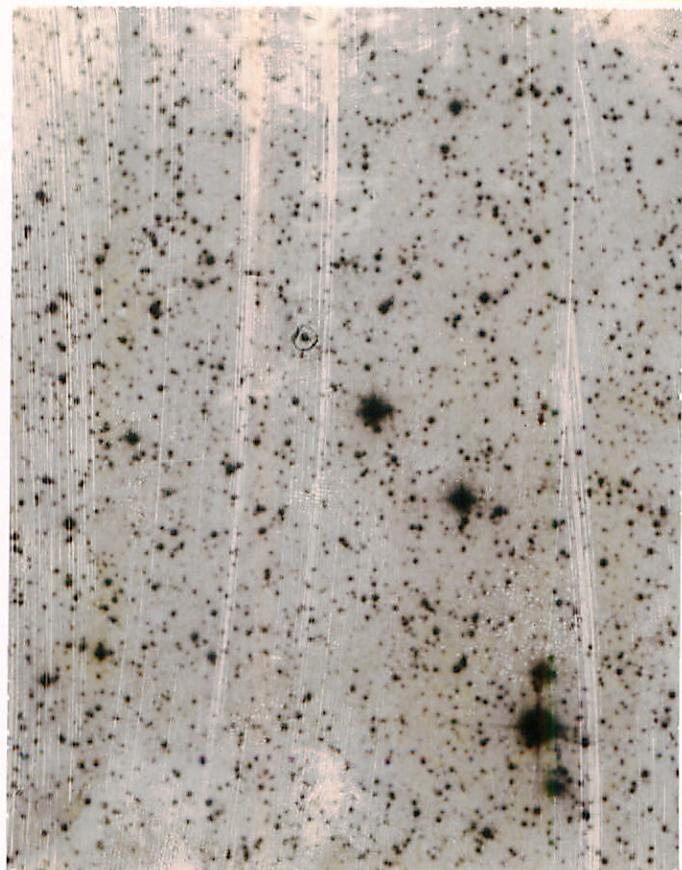
31 32 +09 14.6 1952

12.4-14.1

4.9

Shankwood

2



11

M M H ~~2203245~~

57 32 10 1555
54 26 222 08.3

(20)

98-10.5

7.96

✓✓

54 32 08.9

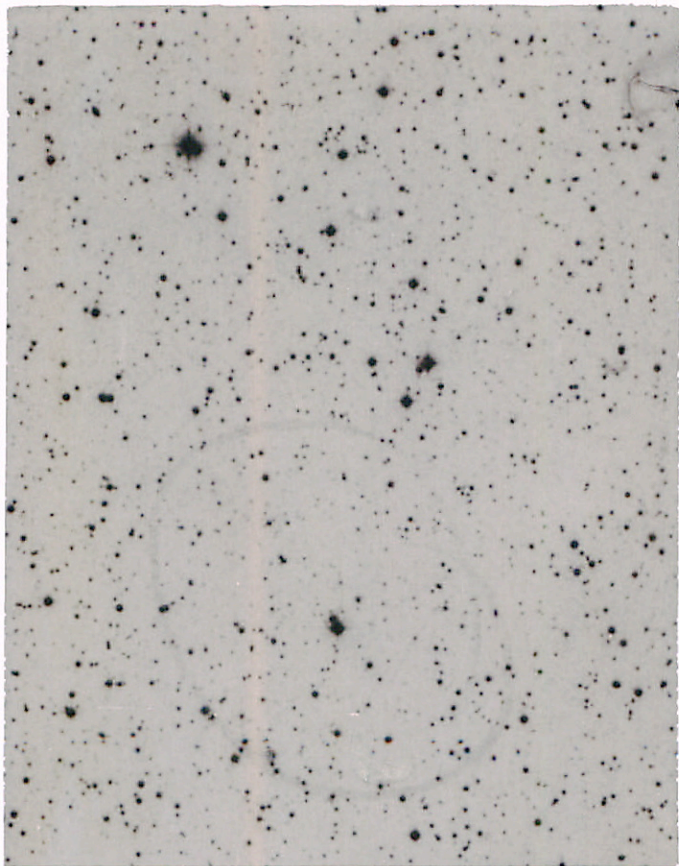
57 02

09 1942

CP

~~Conduct
per day~~

III



III

6-17-34/35

16

42.34

16

112 155-0

~~8.8 + 17~~

43 09

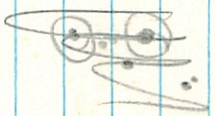
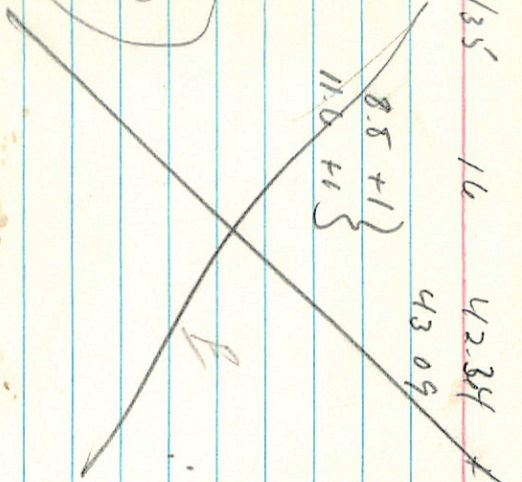
9.8 1562

~~11.0 + 13~~

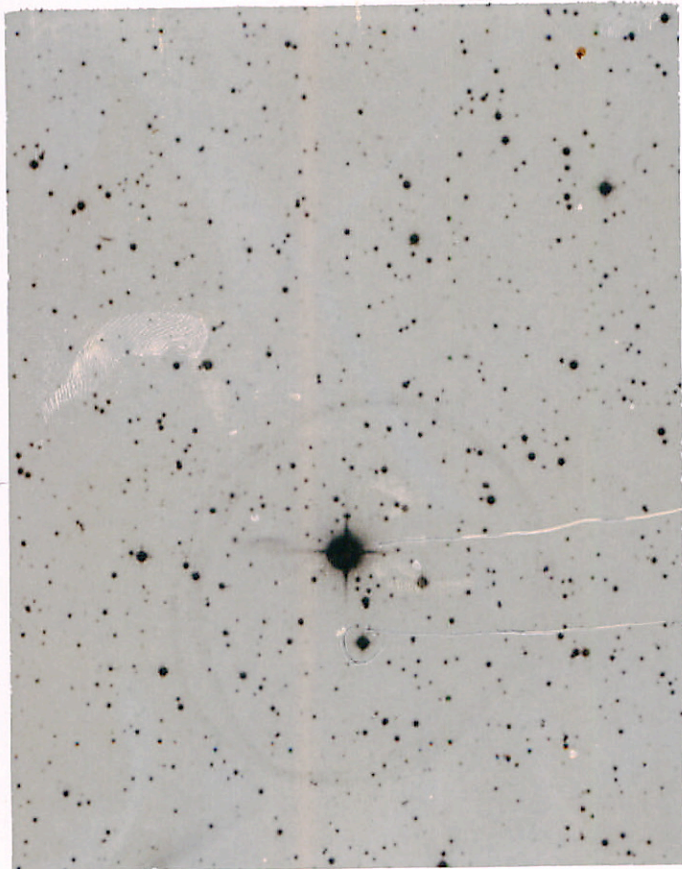
12

100 11

BDS 740



Handwritten scribble



34

35

G17-3456



G-111-139

8 14 33 437 555

53.1962 ←

136mm →

15-19

(2)

(13.1)

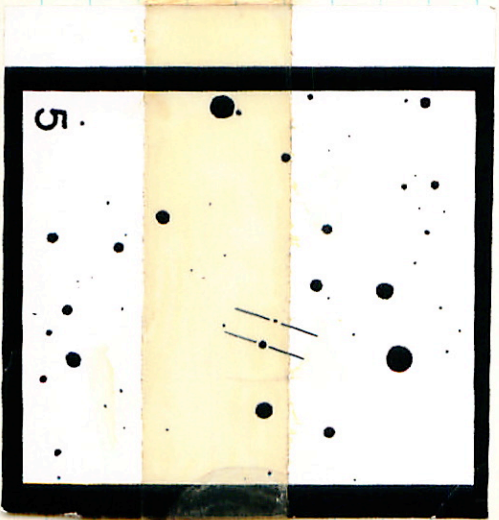
+2

} 65"

15.3 + 1

100' ~~100'~~
1

B humpt
sp 2/10
45



C N Mon

6

25 14

08.5 1855

27 36 +00 07 1900

30 10 +00 05 1950

47 04.5 1962

13.5-15.0 4.708^d

Year Mon

Plate 115

F

2

(2)

G-94-B5

2

20

44

+22

14.0

1950

"2

2

21

26

+22

17.0

1942

9 } 26" 940
15.5

(2)

2033

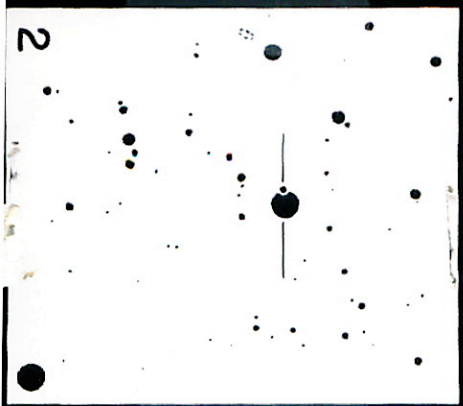
2

38.4

+26 54

A 5.5 } 29" 00
8.7

2



44 Mon

06

49

22

-07

32.2

1960

51

47

-07

35.7

1950

52

14

-07

36.4

1940

13.8

-14.8

3.45

52

22

-07

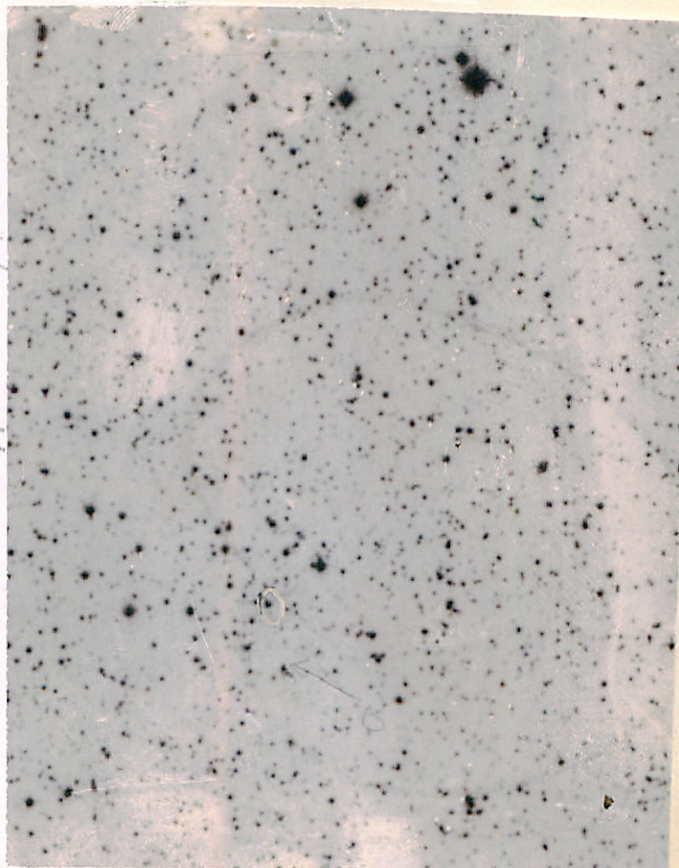
36.5

1962

Amundsen

13.13

N
YYMOM



1/15 - 1

100000

VW Num

OLG

21

53

409 02.1 9900

Hoffmann

File

OLG

24

37

409 00.5 1950

Son mit

1929

OLG

25

10

409 00.2 1960

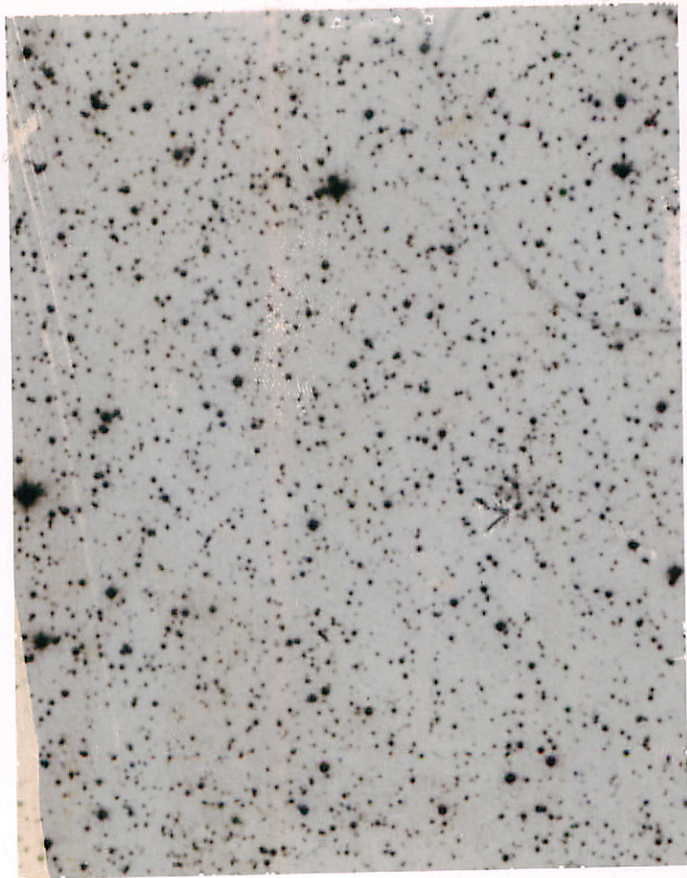
13.2-14.2

25

14

409 00.1 1942

1.85-3



SV Mon

(cap)

6

16 04

L 6 30.9 1504

A.M. 214 221

18 45

L 6 29.7 1500

~~Apr~~ 221

19 19

L 6 29.5 1500

8.6-10.2

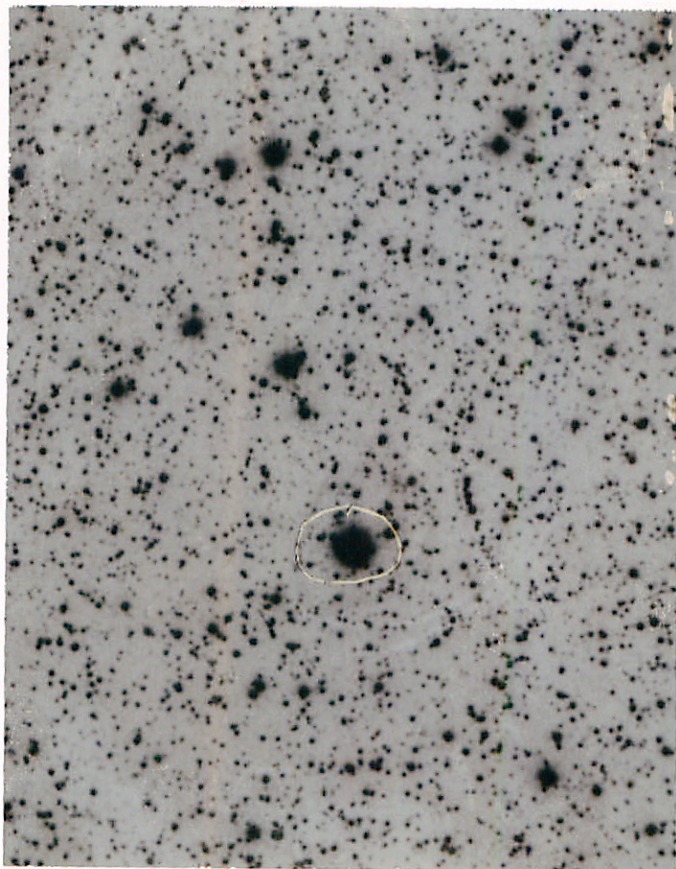
19 23

L 6 29.5 1502

15.23

150 v1

1000



15
→

SV Mon