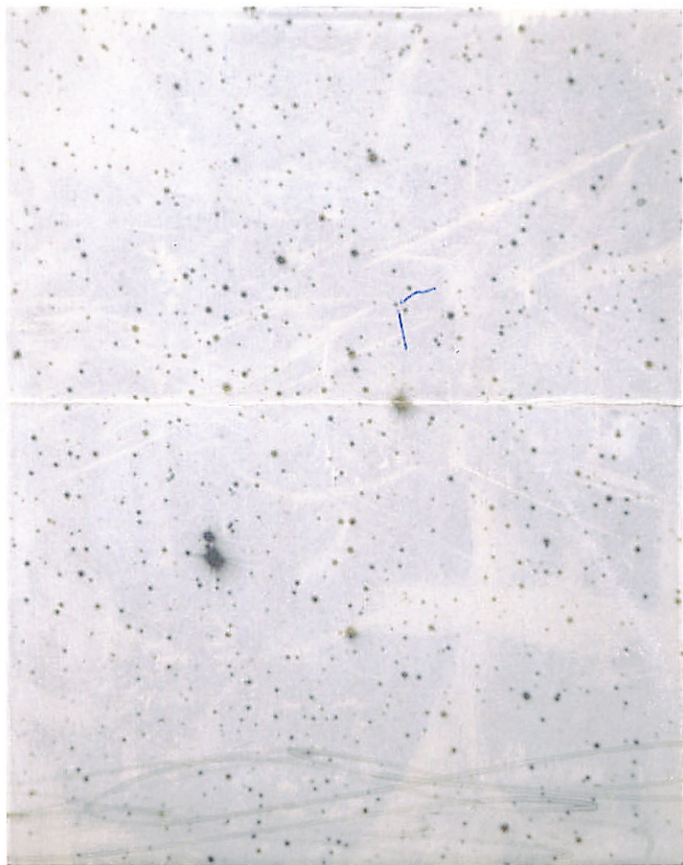


45 1000



N



W

E

look like 10<sup>th</sup> red G

WV 815b



8156

5191 48 49 - 401 81.

82



N 5133

3 10.1 7.2 28 15.25 0.33



U.S. N



LTT 1517 3

10 41  
11 00

\$ 0.39840

-62 23  
→ 19.7

24107 33195 85- 4113 B



24107

11

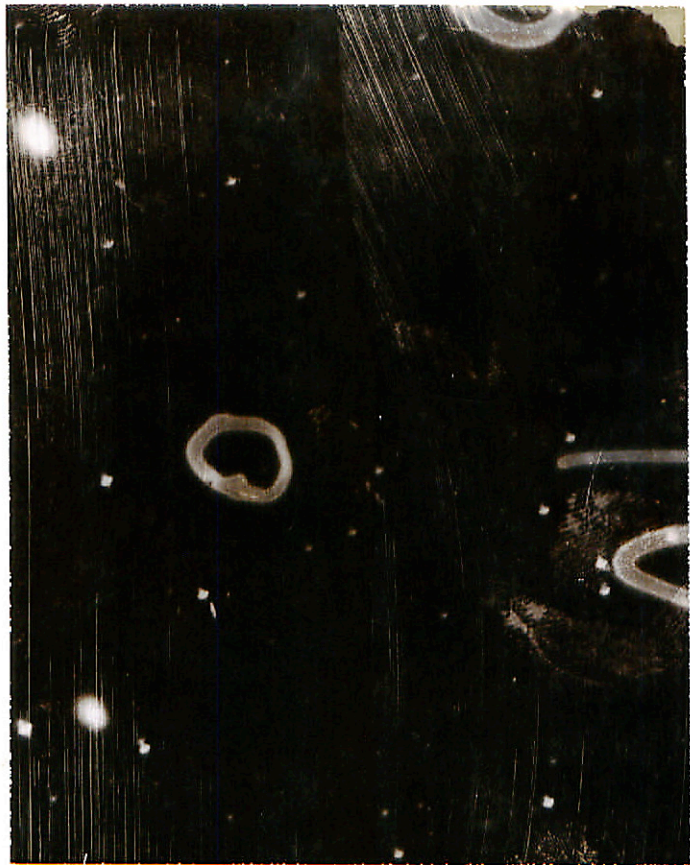


13 100-78 57 36-791 81



9/25 A

2004 33' HE km 337 7



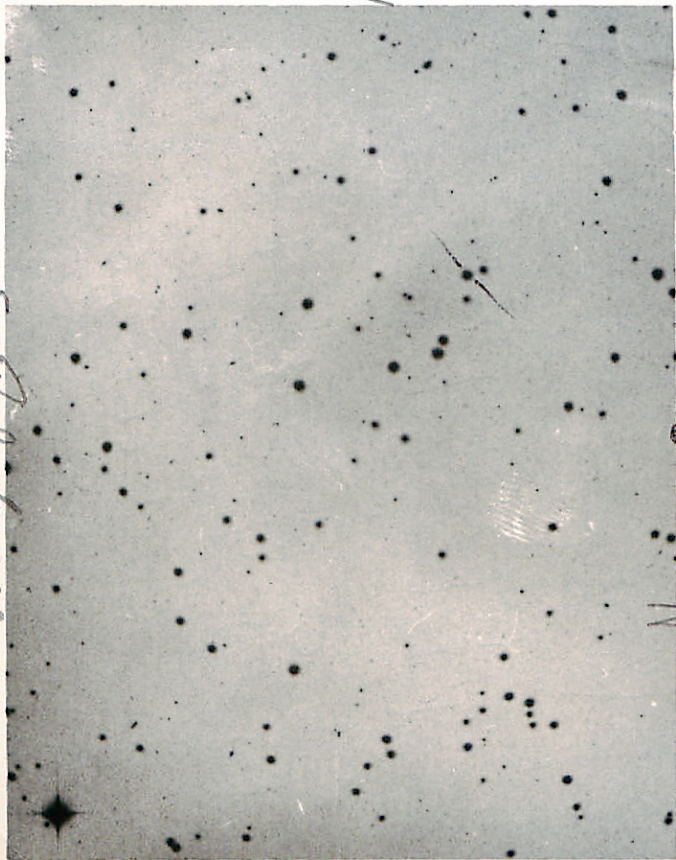
2476

11



2466 5 07 21 44 34 15.00h  
0481530

6x Pal Survey



HV 8002

N

E

W

#V8002

=>HL718

0:08.9 - 11:46

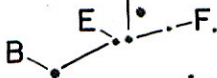
1950

N

+32° 3697 (9<sup>m</sup>.5)

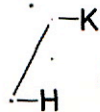
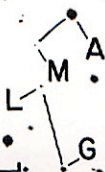
E

V V 1.60



C

D



5'





E

o

L711-10  
N

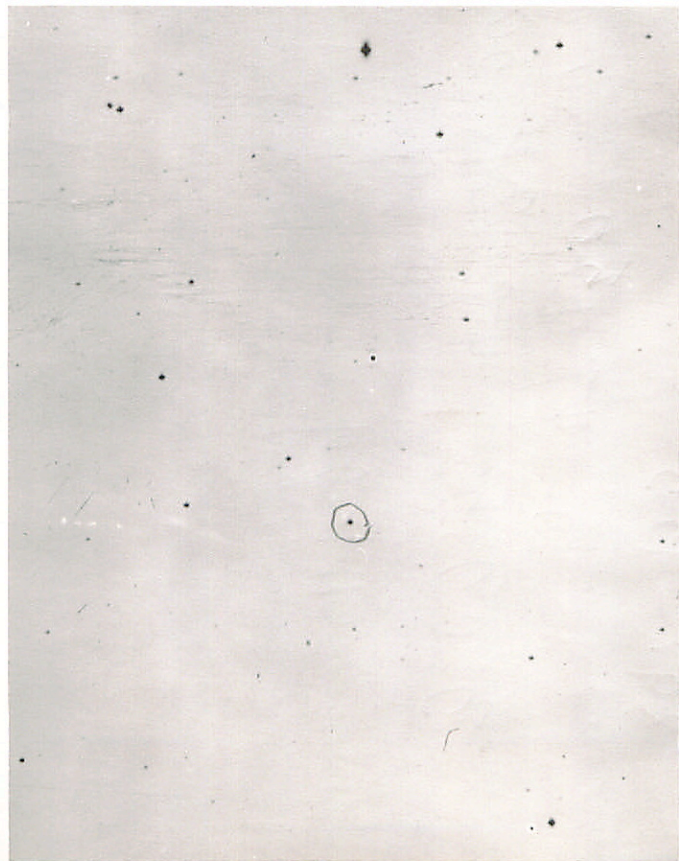
GLii

pd:b.01

92:02-

00b1

89E:02



298-103

= 60-47:950'50

3:03:52-47:13.4'50

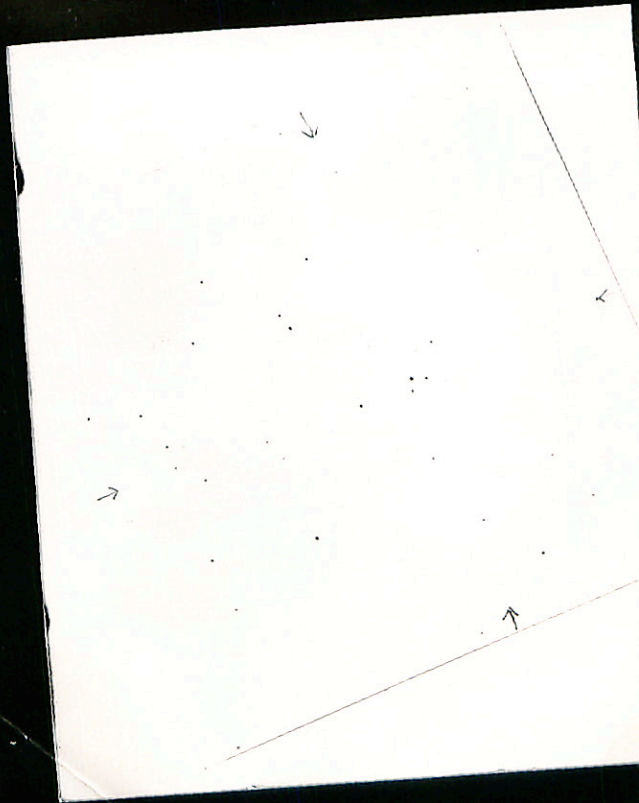
11-1 pg IC-1

752-19 N

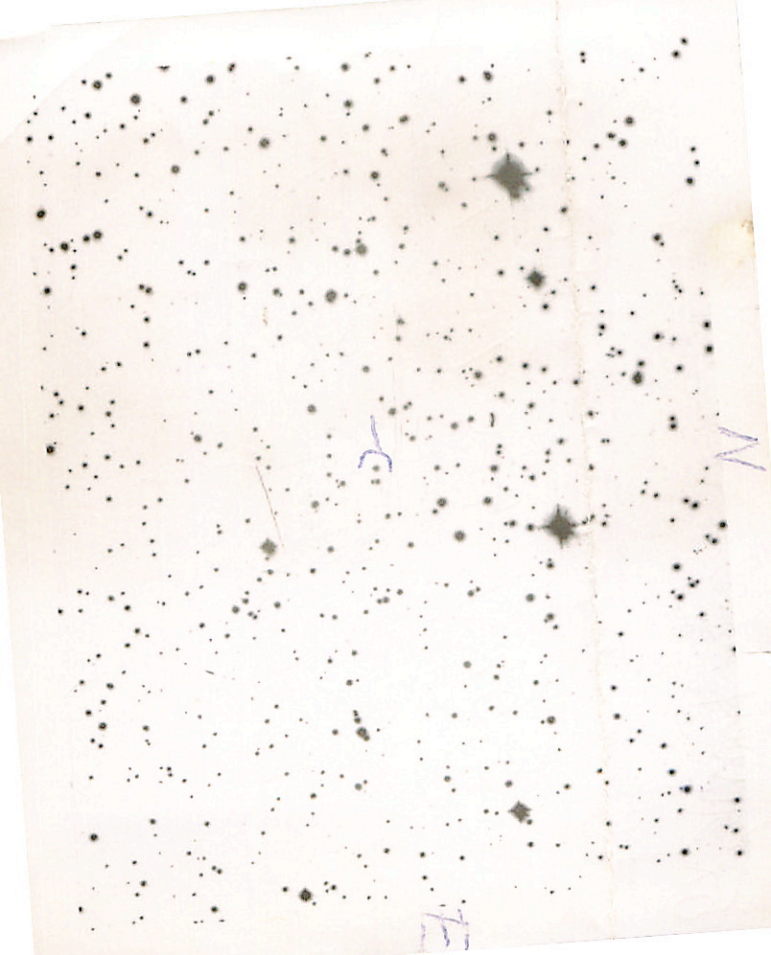
F

752-19  
↑





L906-43



6x survey LF 658-2

red

5:52.7-4:09 1950

15.7 pg by 2" 37  
15.1 pr