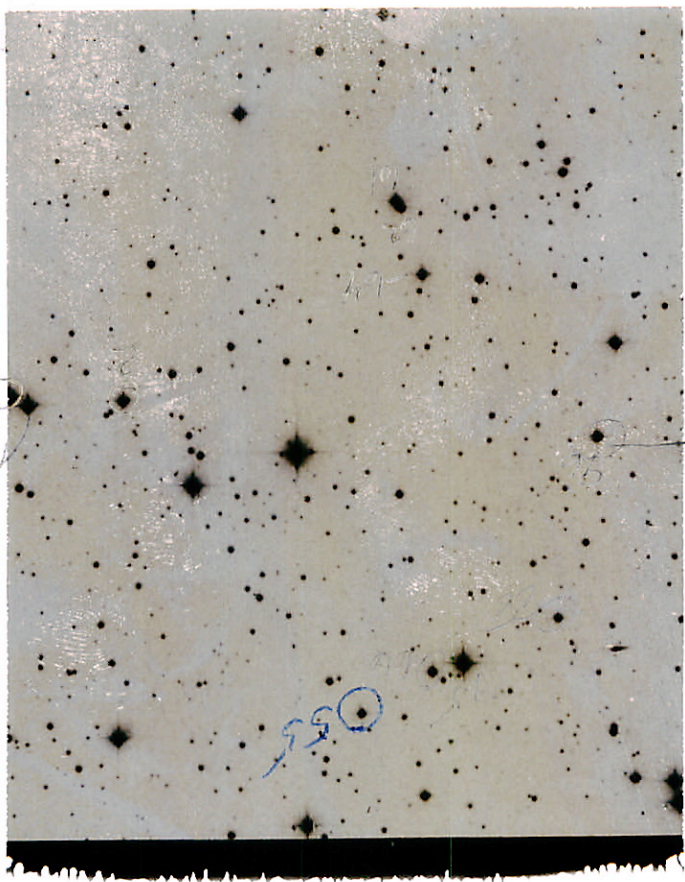


HL  
b9  
←



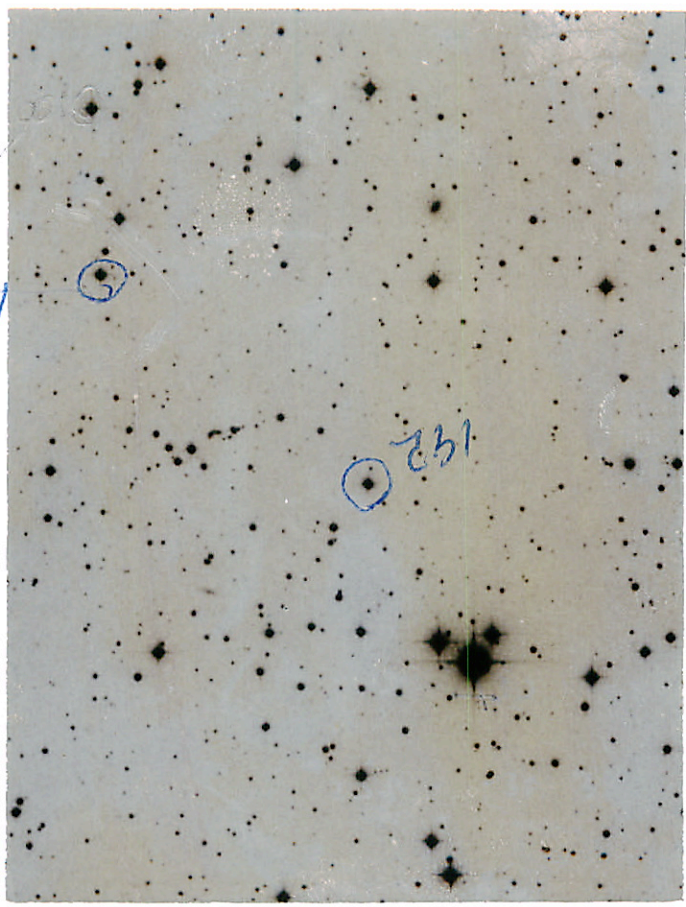
10  
1a

h7

→

055

2A



17



2

20 10 3

498

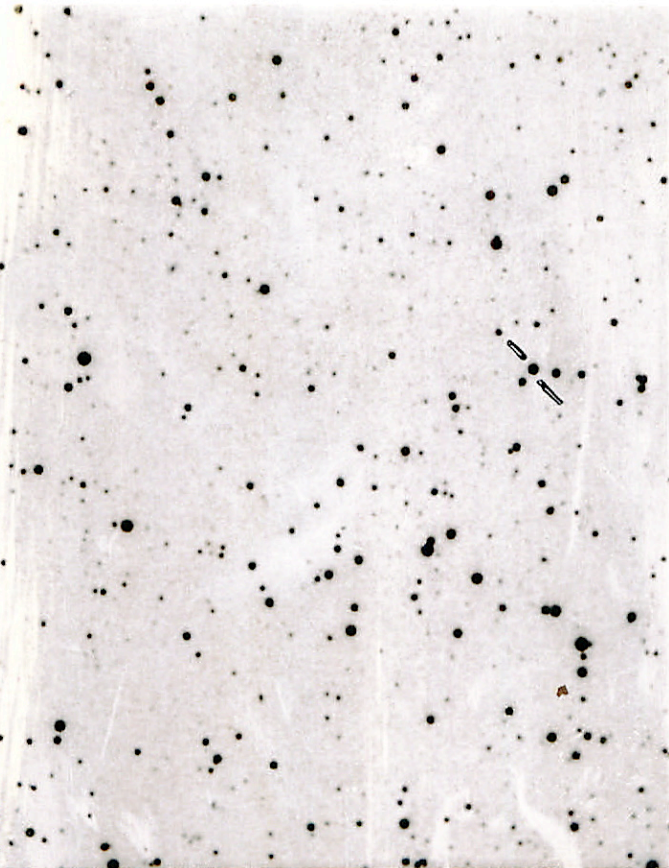
AT Apr

22 16 32

-20 16

0.3 141-15.0

Chickadee with pencil chart



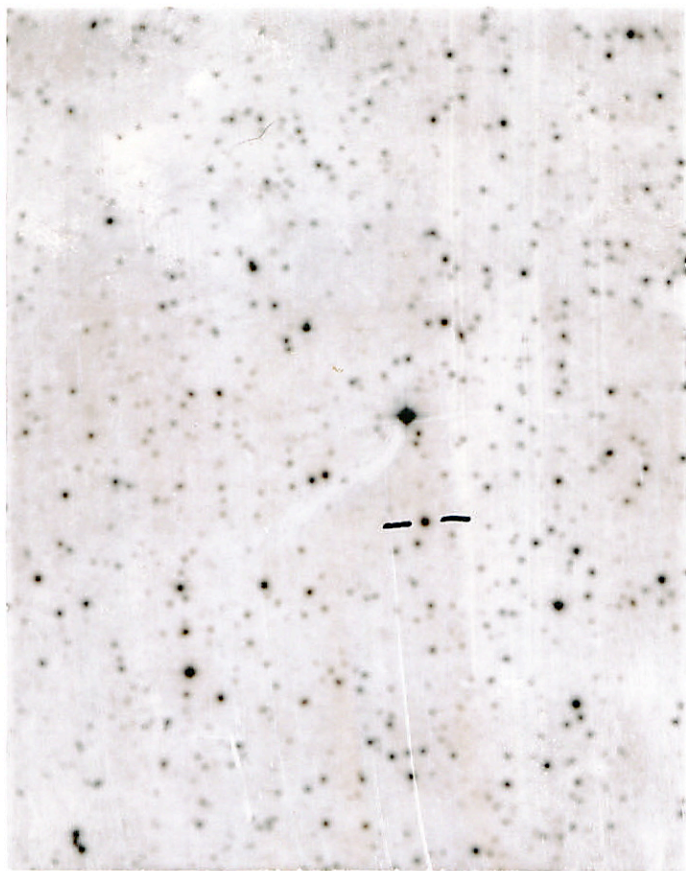
14.32 199 + 1.6  
17.09 194 + 40

Blue

1000  
1000  
1000

11 09 51

40 53



198

864

6735

✓  
04  
10

16 52 M

-57 46  
1/11

Red

16 50.9 -57 46

140 k 0.59



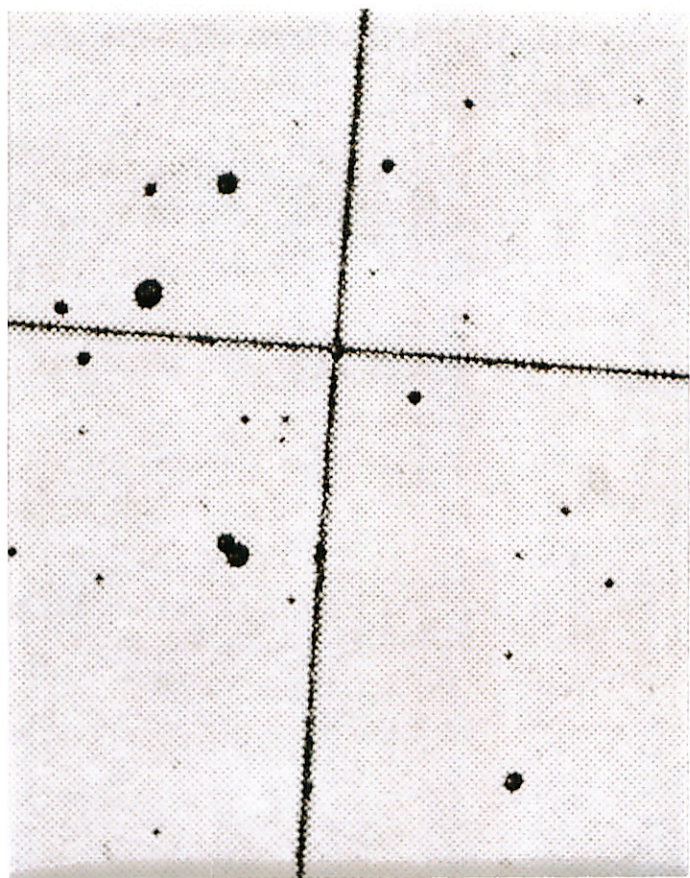
L 203-139  
 16: 46.6 -57: 41 14.0  
 Cordoba yellow

PO 1

1/11 1/11 1/11



15







658

20/1/72

X

22

30

21

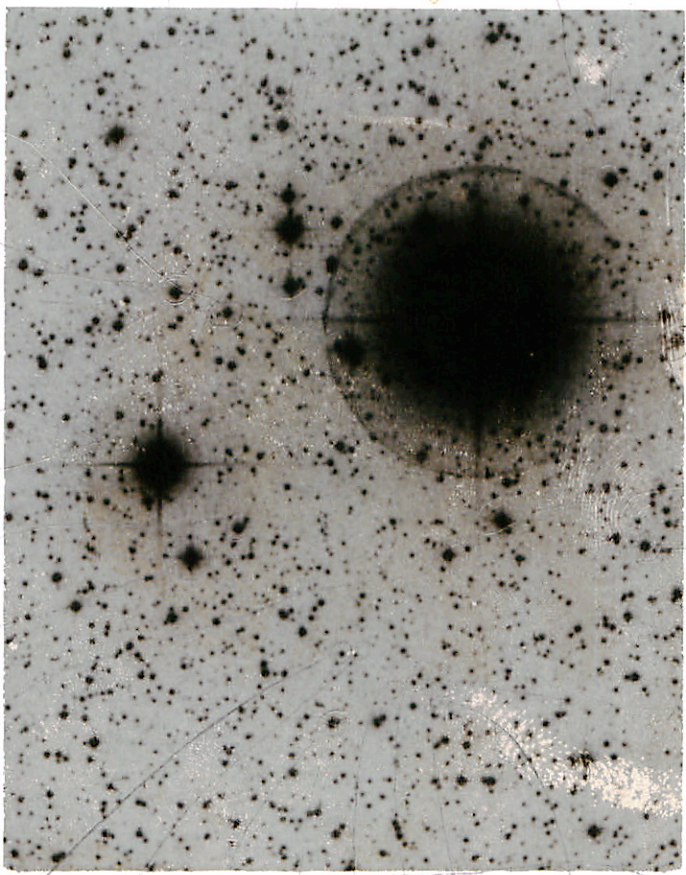
20

19

1

3

18



25

24

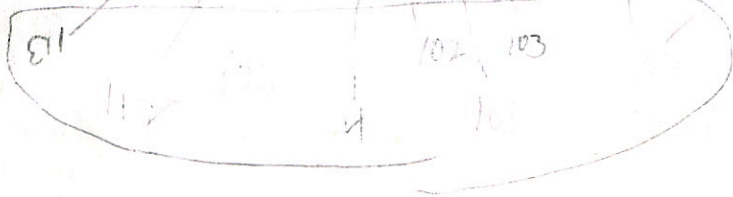
23

22

21

20

19



13

102

103

112

101

18 53.2 436 27 1942

L1 stel 5.63 -0.14 -0.63

POLAROID

680912A

S



$m = 11.2$   
 - 231.001  
 1210.561



$m = 1.4$   
 $\rho = 16.467$

↑

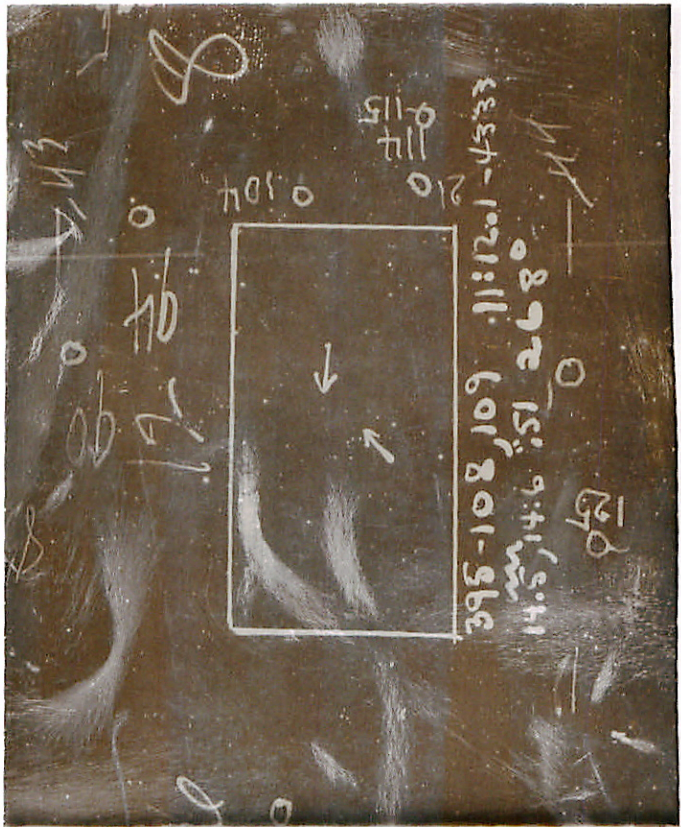
↑

N

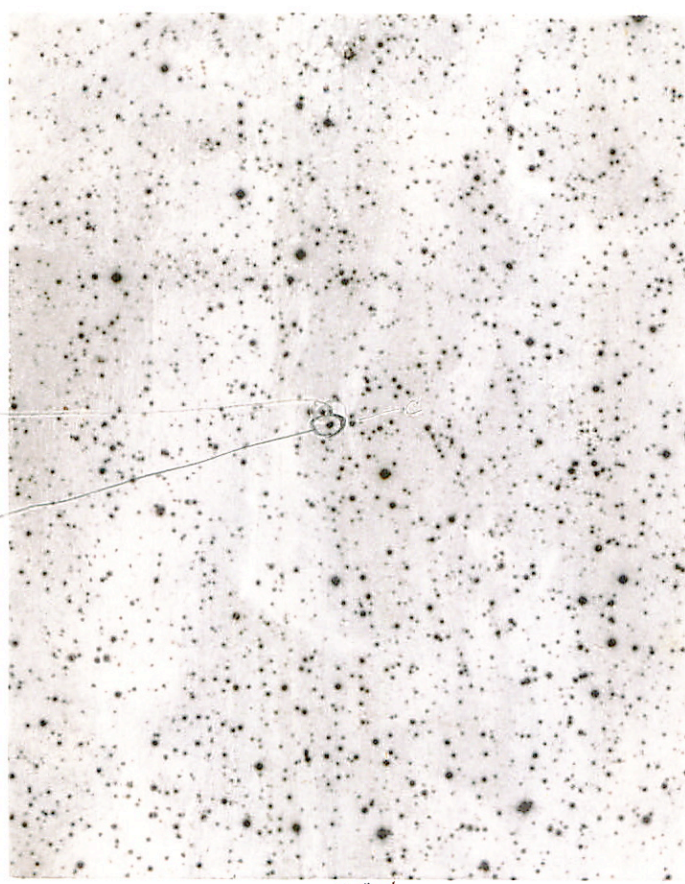
Red  
 Area 2'  
 Area 5'

1550  
 17532 - 1623  
 175470 - 1623  
 1963

1010367



B 2  
2



no  
77  
2  
on

N



best

65  
-16 11 91-  
21 15 9

1772669

LT 2669  
E1343

got a print

POLAROID

E724X23

S

E

W



||  
||

↓  
①

N

LP 135-154/5  
 16/10.6 + 56:0/1950  
 1 hr 16.8 f<sub>2</sub> 0"35  
 f<sub>1</sub> 16.0 m  
 5 x Palomar Red  
 4/5/52



W



N



S

E

19 10 30  
415 44 1463

LP439-354

17.2 km

0.15 ±

0.68 275

14:09:54 + 15:47.1 50

→ 14 10 3.6

44

63

we 9C 19205 5.5 78

14:11:41 + 13:11:35 50

9-1

9-2

POLAD013

1:20912A

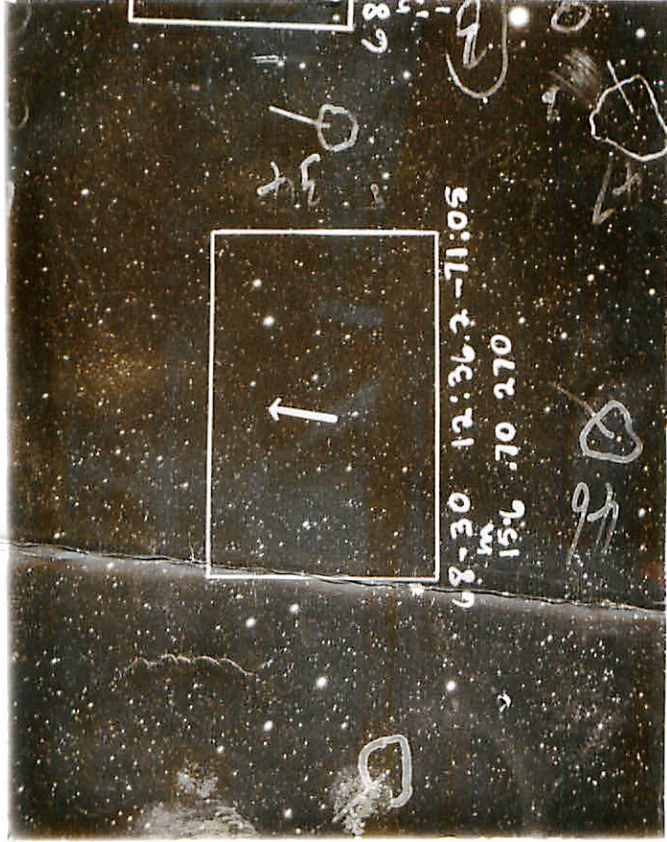
4846  
68-30

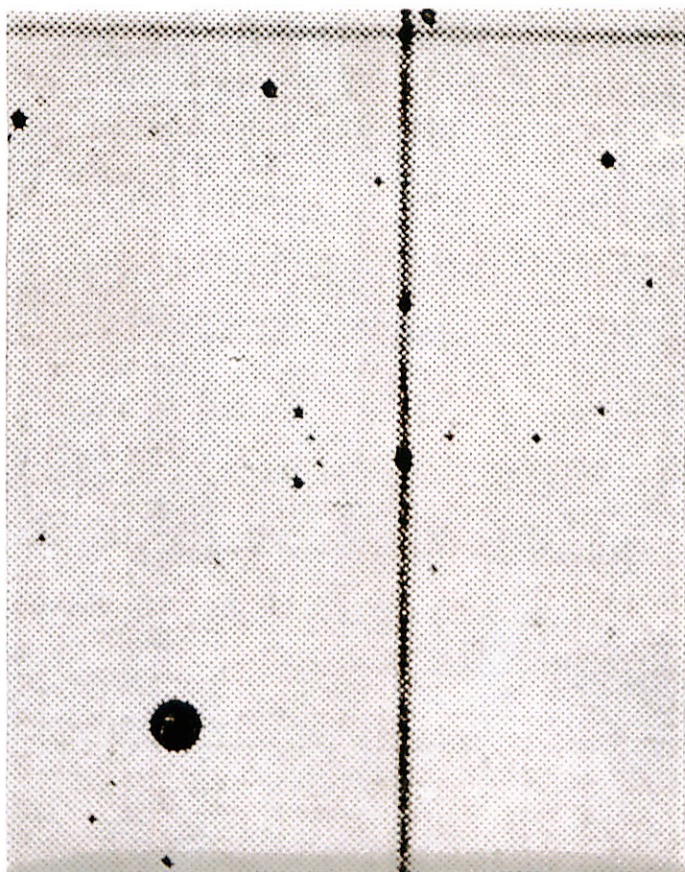
12 40 23

-71 26.5

12 39.3 -71 21

15.4 p.m. 0.14





170  
MAY

5

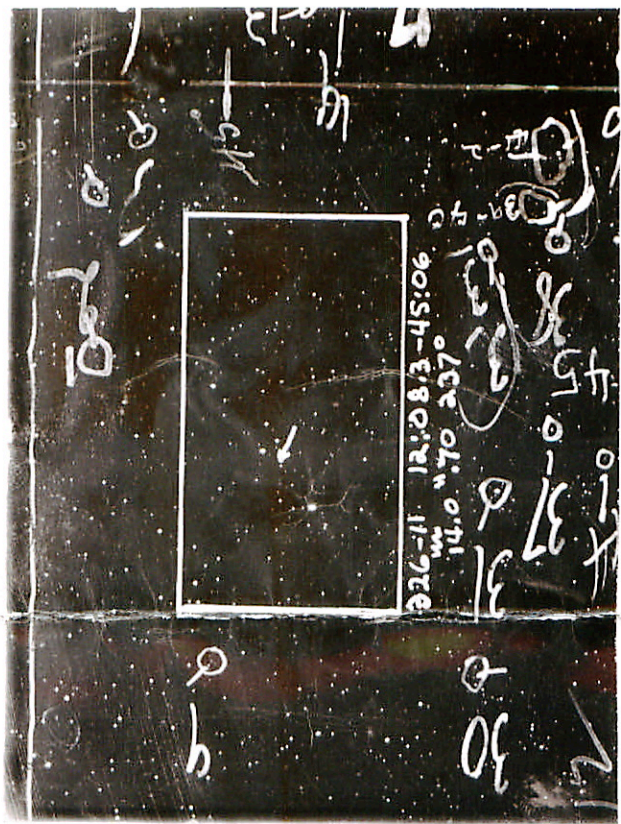


5 x Palomar Red  
N

LB 253  
 11:04.8 + 60:13  
 pg 12:9.6  
 1950  
 1950  
 $\mu = 0.72$   
 $\mu = 0.72$

E

M



4584 20/2/2002