

V 449 Ori 05 23 30 18.8 1955  
25. ~~48~~ +11 20. 1900  
28 35 22.5 1950  
29 12 23.1 1962

14.9-15.4 0.442  
15.4

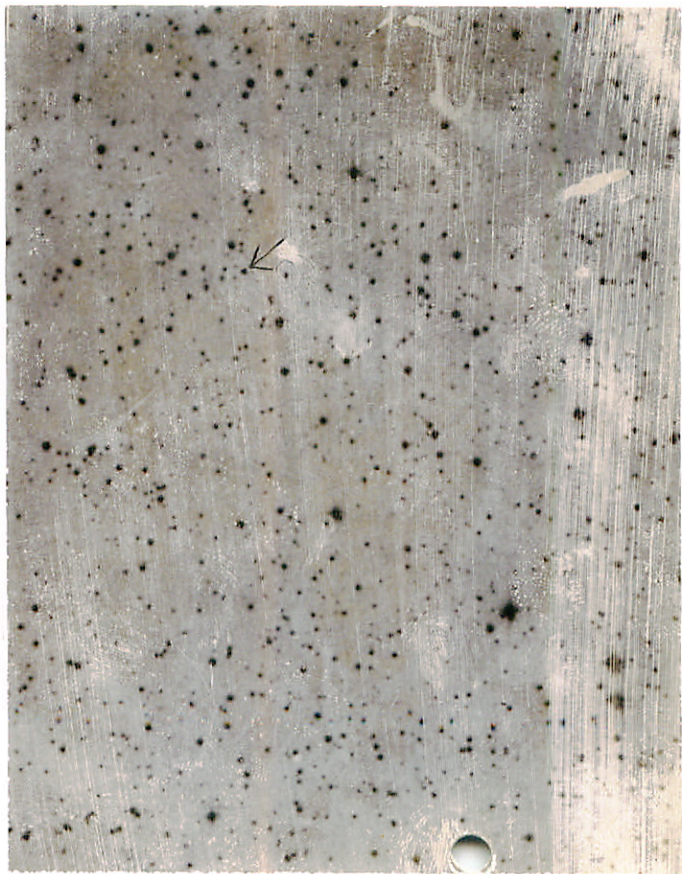
V 441 Ori 05 20.9 14 1955  
23.4 +11 17 1900  
26.8 20 1961

Rw 15.1-16.2 ad

V 1504 22.1

W. Gotz Veröff. Sonneberg Vol. 4 no 3 1958  
Sung. W. M. M. M.  
M. M. M. M. M.

N  
V 449 Div



LDSYS-A-0

13

34.3

-16

04

1950

29.4

-15

45

1855

34.56

08

1942

14.9 0.0

15.2 + 1.6 } 24.0 14"

13.8 + 1.

approx

200

-100

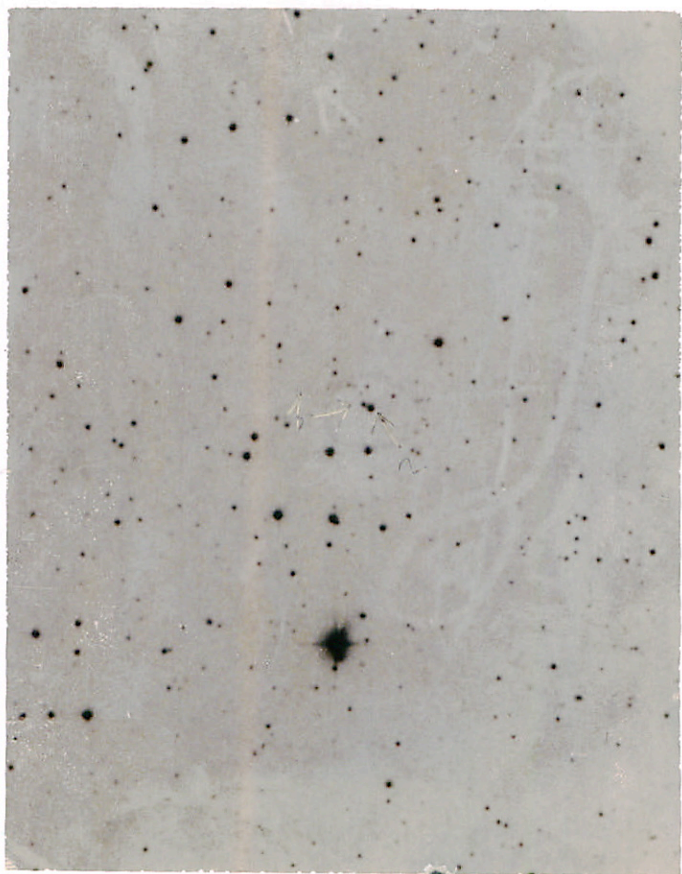
~~100 " New~~

100 " Blue

B

2

2



LDS 455

G 114-88

8 58 17 -4 10.4

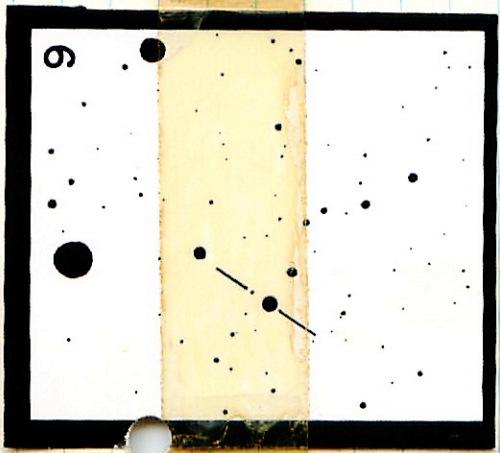
13 1962

→ 54

(2)

✓

9.0 +2 }  
14.9 H } 54''



RZ-Tow 4 30 4 12 + 18 27.2 1855  
33.0 1500

F0+P0

33 43 39.4 1550

10.5-11.5

34 25 41.0 1940

0.416

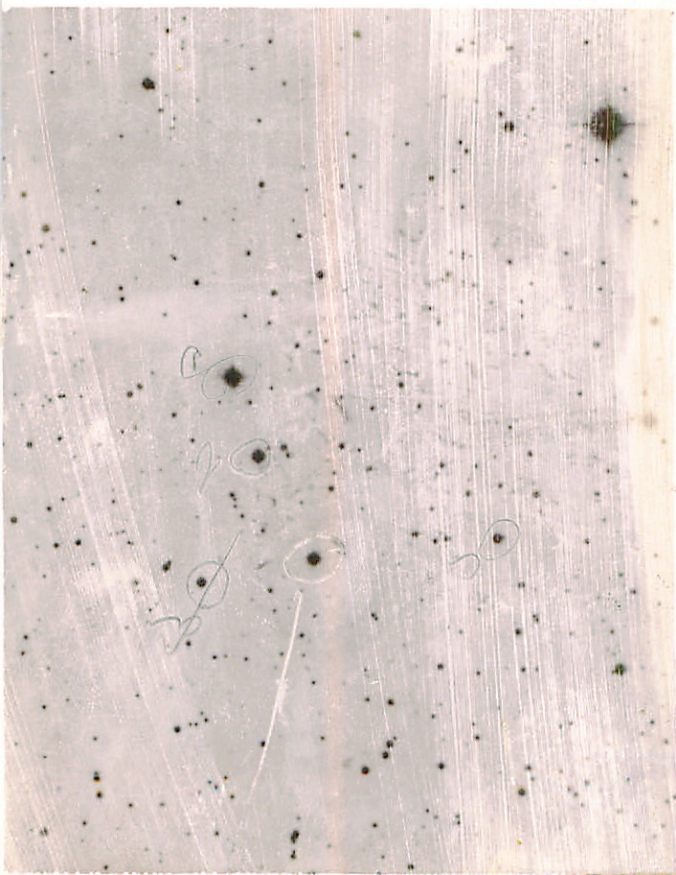
2nd 2/3

+ RZ

Ⓟ + Ⓞ again

Ⓟ B' Ⓞ'

200''



3

21

N

W1800  
CC217

(Jug)

3

13.11  
14.00

+37

55.1

1950

10.5

adms

58.41902

G.95-20

12.5 \* 8.0

10.5 adms

-107.36

~~100~~

1

1 100  
Red

2644

3

39.8

+33

51

B1

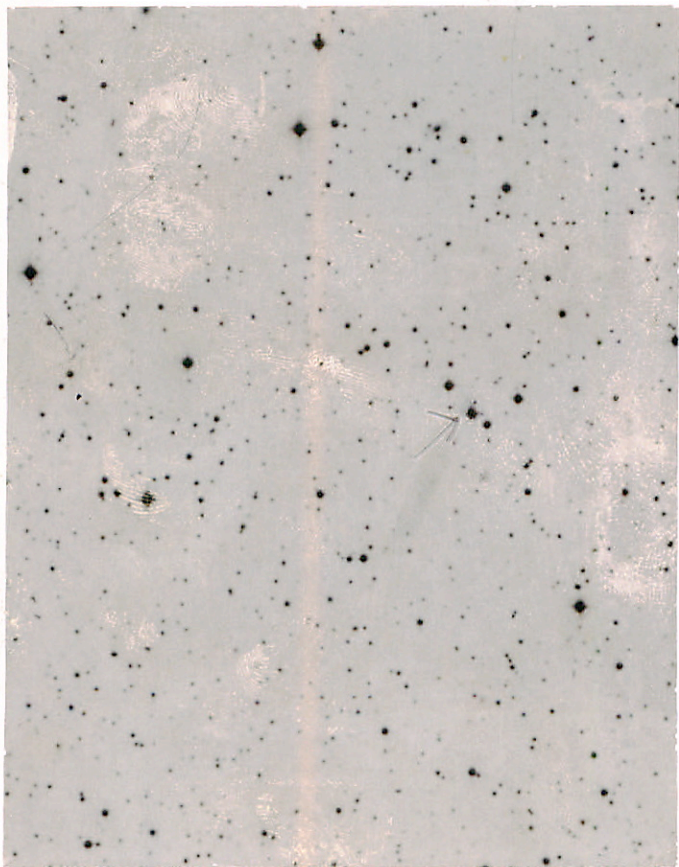
5.0

9.5

} 20" 2380



Castellus



100

ADD 75021

8 45 04 -29 <sup>was</sup> 34 2.66145

75022

8 45 04 -29 36 7.6 ROM

(218V)

(200V)

7.19 +2.02 -

200071

5.95 +0.96 23071

134

\$36

6.88

10.53 23071

71

1 Oct 1967: 09 44 20 - 62° E1'

5.0 - 6.0 35.6d F8-K0 Cpl

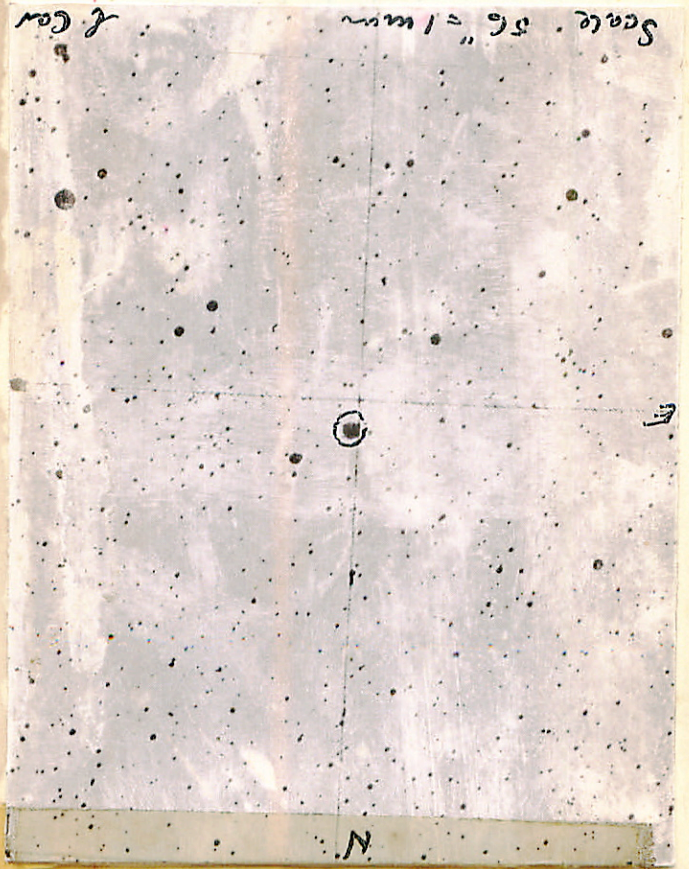
RET

W  
G  
30

145  
11  
02  
35  
65  
124

f. Car

Scale . 56" = 1 mm



E

N



R Ca 1967: 09 31 25 -62 38

Apr 14 V 3.9 - 100 3084 44-77

N<sup>2</sup> SW

June 15 Monday night  
26 to 1570

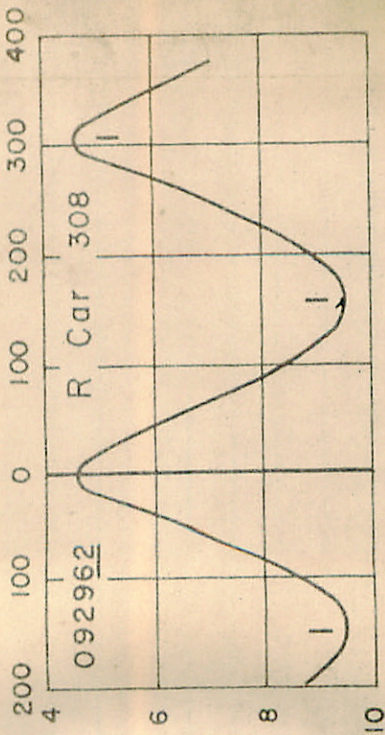
Blue Dec 29

Jan 27

7346  
14

29 (2003 V<sup>19</sup>)  
Jan 31

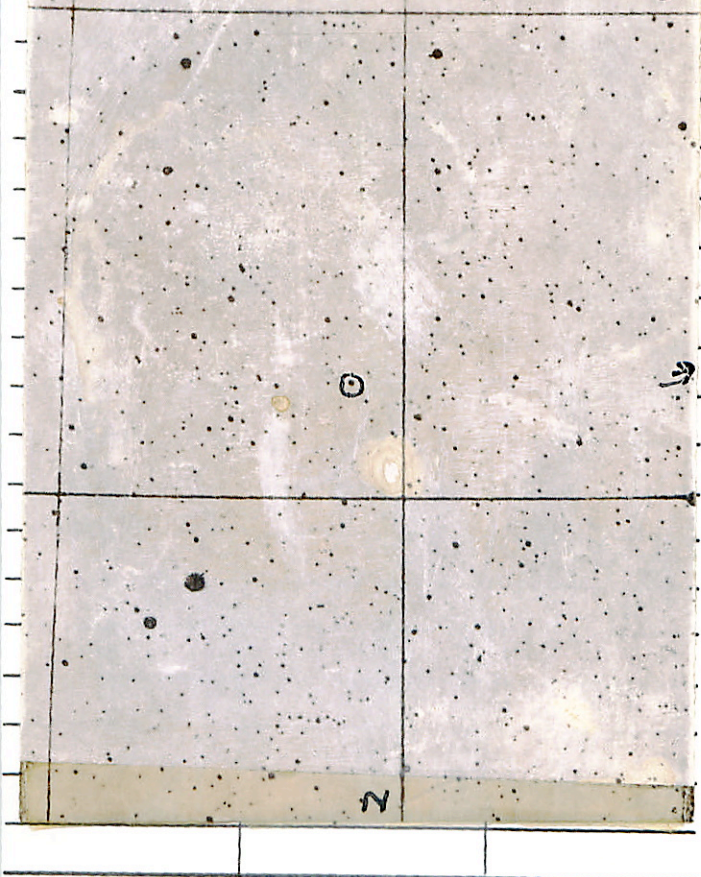
Jan 29  
Jan 15



Key AASVO

Observer:  
R. Coe

Scale 56" = 1 mm



Comments:



Mount

May 26

~~RR Trip 4 58 14 -14 51~~ MC

Anderson 5 Sept 96

27948 prof 4 18 42 -2 42 73 gm

RR din 5 4 57 19 25 57 19 108 05  
GP  
Mount 7/27



410 2756

12 46 22

for 21

5.5065

✓  
2m  
~~10~~

Mag 70  
15 " "

9.61	+	10.965	+	10.66
9.59	+	10.965	+	10.67
9.60	+	10.965	+	10.65

M2 III

209336

22

01 34

-31 36

7.24h +148

~~102~~

S.45 +1.44  
1mug  
70

7.00 +1.58 +1.425 15mug 70

186780

19 45 28

-17 09 650m +176

0157E

~~186780~~

5.35 +1.085 mag 70

6.85 +1.79 +1875 15 mag 70

V Page 8 52 14 -34 42 90-115

70<sup>d</sup> 142

B ←

20 blue pen more

W. H. Jackson collection

76389 ✓ 8 53 12 -35 37 41 9.3 140

~~76244 ✓ 8 52 54 -34 48 84 110~~

~~76251 ✓ 8 52 36 -33 41 8.4 110~~

~~76210 ✓ 8 52 24 -34 21 9.9 110~~

76179 8 52 12 -34 09 9.3 110

W. H. Jackson

SS Sea 16 53 04 -32 35

152  
8-7-90

sent

ghaf

~~16 52 33 -32 08 21 84~~

29 sent 152402

152635 ✓ 16 53 57 -31 27 7.34 08

152180 ✓ 16 51 15 -31 51 7.40 08

152179 16 51 15 -31 24 8.7 08

153033 16 55 20 706 32 7.54 15

\* Blue only

12 sent

T<sup>th</sup> Row

HR 8521 22 21 6<sup>or</sup> 4  
50 54 - 46 of 6.654g

RV

WBv

(PI)

70 kcal

5.23 +196 41.925-22 Dec 71

5.86 +184 +209 28 Dec 71

9815 23 08 18 -40 46

Shed Nest

LOG M3

$$V = V_0 + kt - 0.0768^{-1}$$

→ 41.83  
42.02  
SD : 42.0

$$B-V = \overset{0.5}{1.055} (g-v) + C \quad \text{1.25} \\ \text{1.075} \quad \text{41.5}$$

---

---

---

$$M-B = \overset{1.40}{1.15} (g-v) - 1.50$$



X

B 12.2 2180 28  
C 11.1.5 30.50 30  
350

R Ben X 1967 14 14 08. -59 45.5

~~1967~~

5.4 - 11.8 5466 d. 174-MS-

18 Aug 02

19 Aug

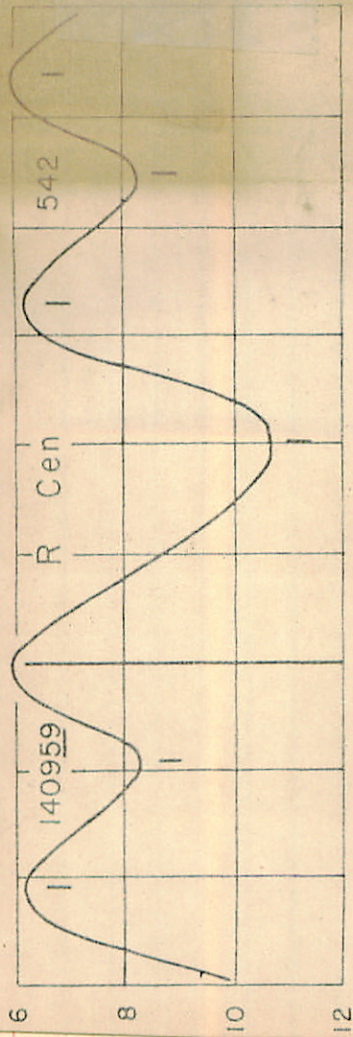
Var

19/13 Aug ✓  
19/17 Aug ✓  
14 02 04 -76 39 5.5 My

14 54 05 -76 31 5.0 pmo

HD 124636 14 14 38 -61 21 9.985

12439516 14 13 15 -58 39 8.488  
44 90.88 JMA



Key AHS 10

R (cup)

core 56" = 1 min

C

E

N

Comments: