

<sup>20</sup>MW      Pens      2      09<sup>am</sup> 41<sup>s</sup> + 50 55.5 1942  
<sup>20</sup>MW      Pens           07 34 + 57 00.5

N  
AT



Pen  
W  
W

W

W

W

S  
W  
W

W  
W



WPhL

①

∴

01 18 41 - 56 04 5 - 8.8 - 14

⑩

G-124-D1 03 40 50 414 303 1550

→ 23 411 23 414 34 1842

15-1 } 21" 3150  
13.5-



10

Q 102

19.37 +.44 -.23

19.19 +1.17 +1.14

99 16 44 - 67 04 2  
LT 3430 9 16.4 - 66 53 13.8 f 0.31 3330

L 54-8

(R) V

HTT 430  
031  
3330

N

9 16.4 13.8  
- 66 56 5



L-94-56

N Qui (1467-1894)

5 56 55 +20 16 1950  
57 ~~35~~ 16 1962

V B-V u-B

1962 Jan 1	14.17	+0.48	-0.95
" 2	14.17	+0.49	+0.28
Feb 2	14.13	+0.45	+0.27
3	14.11	+0.50	+0.29
19 385	14.09	+0.45	0.00
6	14.00	+0.54	+0.30

670  
532

N. 210 1076



N

E



AOS 15220

21

35.0

+54 06

RU Cyy

~~35.3~~

09 1962

39" 22<sup>s</sup>

+53° 2684

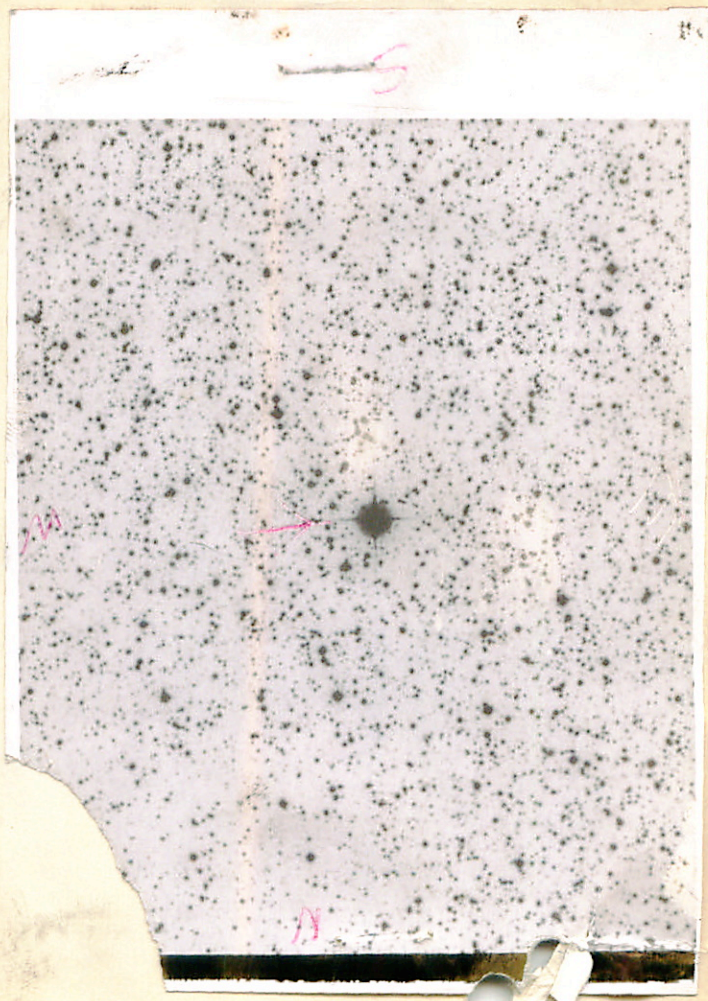
200"

8-10 } 11" 2240

11.5

10 } 11" 250

Min 1961 Nov. 6



B-36-7/8

2

14 33

+26

54.5

1950

9 10

28

1855

15 07

57.3

1960

14

57.8

1967

100" Blue

Red P 160

DATA

Department A  
B

N

E



12-31-78



L1512-34 100" Blue

23

41.4

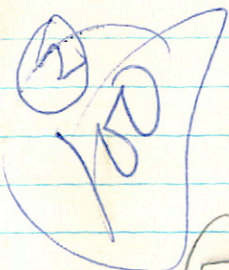
+32

15

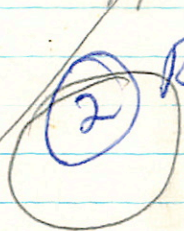
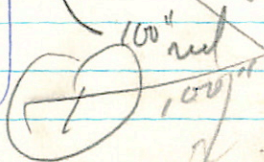
1950

42.00

19



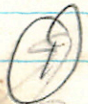
$\left. \begin{array}{l} 13.0 + 0.1 \\ 13.4 + 1.3 \end{array} \right\} 90 \text{ } 174''$



Red stem only

Red +

Blue



200'

GO 15252

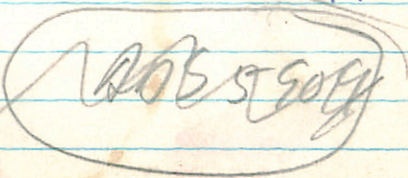
8.0 M2E

14.2

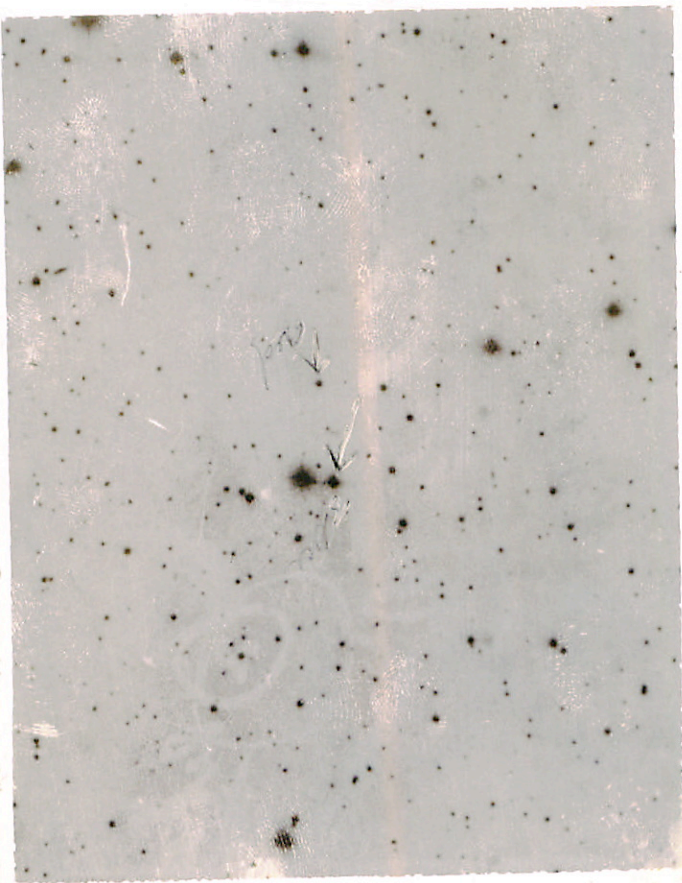
} 28''

+41° 3535

19 53.3 +41 44 7.4 and  
 → 53.6 46 1962



HE-1517



N

N



Ross 711 60-wk

ad AS

P = -68 (60)



Wilson 11060

$$\Delta 1950 = 18 \quad 33.4 \quad \left. \begin{array}{l} 11.4 \\ \Delta d = 2.35 \end{array} \right\}$$

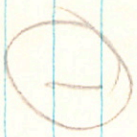
$$\Delta 1950 = +28 \quad 40$$

$$\Delta S = +3.0$$

Ross m = 11: I.D. + 9.4,  $\Delta d_{628} = +3.9$ ,  $\Delta S = -1.3$ .

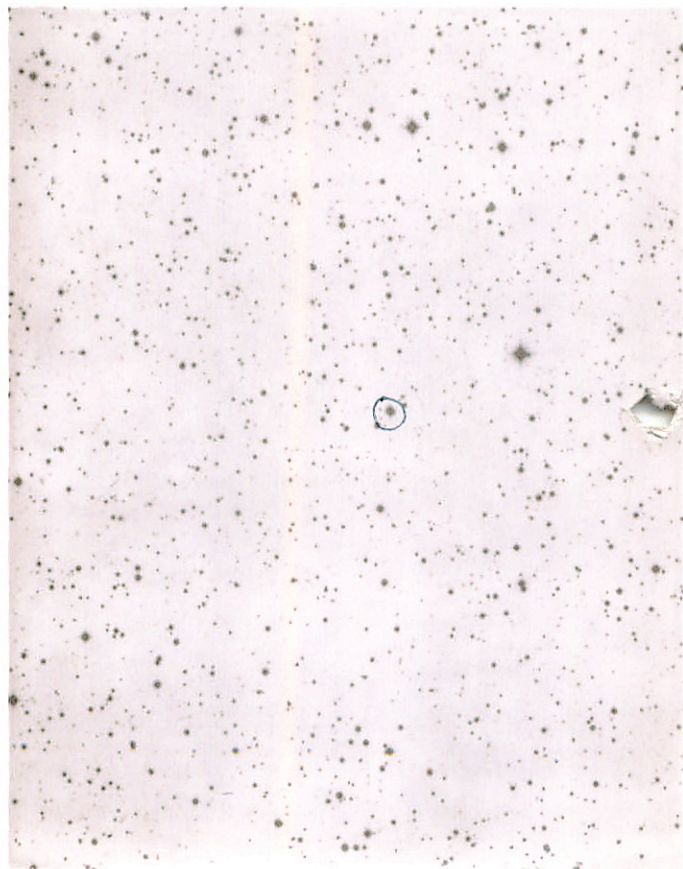
$$\Delta 1960 = 18 \quad 33 \quad 47$$

$$\Delta 1960 = +38 \quad 40 \quad 30$$



will get charts from Handberg

N



W

W 11060

0-1960-15.33.47

51100 = 128° 40 30



0600

ADS 17135

23

55.8

+51

07

15004202

~~56.8~~

56.275

10/19/62

200"

5.5-13.0

10.2 } 28" 333°

P=431' MLE

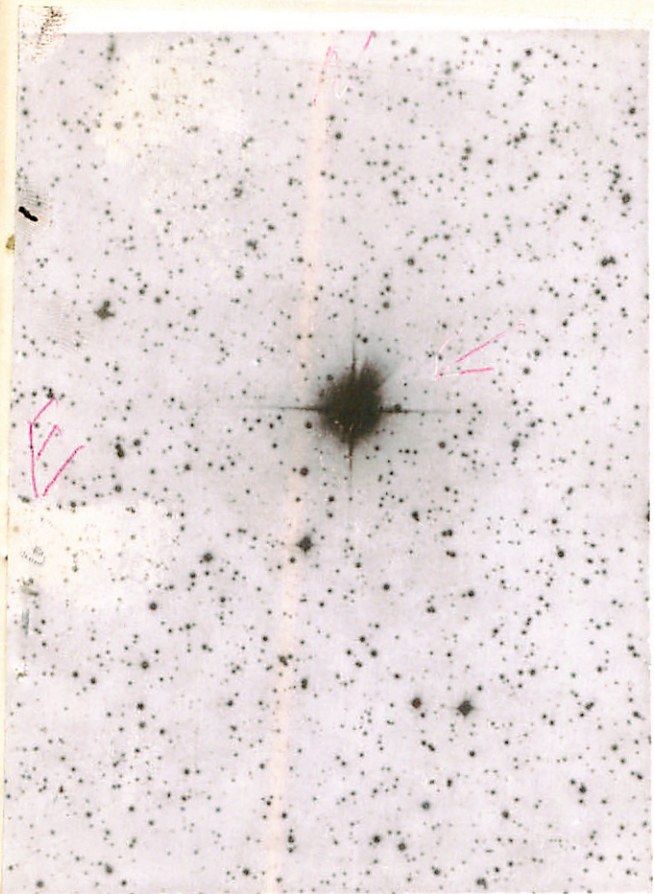
and sp 14.5" ~ 270° 14"

Prone

200

60 CC

Min on Average 1962



R

AZ Vai	13	36 08	24.3
		38 24	40.5
			07.1
Lat X '58, no. 1		40.55	51.9
		41.25	48.9
<u>11.0 - 11.8</u>		31	48.3 1962
0.297	18.1435		

Block

ANGIE  
 Chuck  
 Woboyet  
 top #15

SLT  
 13 24.9 +10 55  
 +1102574 → 28.0 +10 36 ←

9.04 +1.51 +1.26

~~W 8133 ✓ ✓ 13 45.0 +6 39 6.3 dB → 486" 9.9 K4 → 0.55 E 1.25~~

W

B



C

E

A

AZ Vir



E

D

#27

D17

N

1mm = 15''

blue  
plate

3  
O

13:00.6 + 27:55 (1955)

13.3 v. blue

E

15" / *man*  
black



4409 11 24 20 -35 56

5.24-115 1128-440-  
5.24

5.23-123 1131-444 1420 75

5.23-133 1146-445 25 "

5.24-101 1130-442 414 75

5.23-124 1133-450 3 "

5.22-117 1135-451 7 200 75 36 "

5.22-122 1125-440 8 "

5.25-135 1130-467 9 "

5.21-124 1127-437 12 200 75 36 "

5.24-114 1124-445 13 "

5.23-124 1140-425 14 "

5.23-127 1125-444 15 "

5.25-127 1133-436 30 200 75 60 "

5.25-124 1132-435 16 200 75 60 "

5.27-122 1116-414 15 200 75 60 "

5.28-126 1118-426 14 "

5.23-116 1124-434 15 "

CNDR

5 28 44 +4 11 6.2.66

2  
1200

HR1537

~~RVK~~

lost van

✓

✓

39801

8

46

82

-8

20

807

150

39926

RV

1005



Norman include HR 1837 which is

HD 36217