

FT Mon

OL

14

19

to 4 07.0 1949

van + 6 mo 304

4.53

18

57

to 4 05.8 1950

12.8-14.5

19

29

to 4 05.6 1960

19

35

to 4 05.6 1962

Ca 19 52

to 4 cut 1963

22
26
15

11

24

-12 30

25 18

-2

29

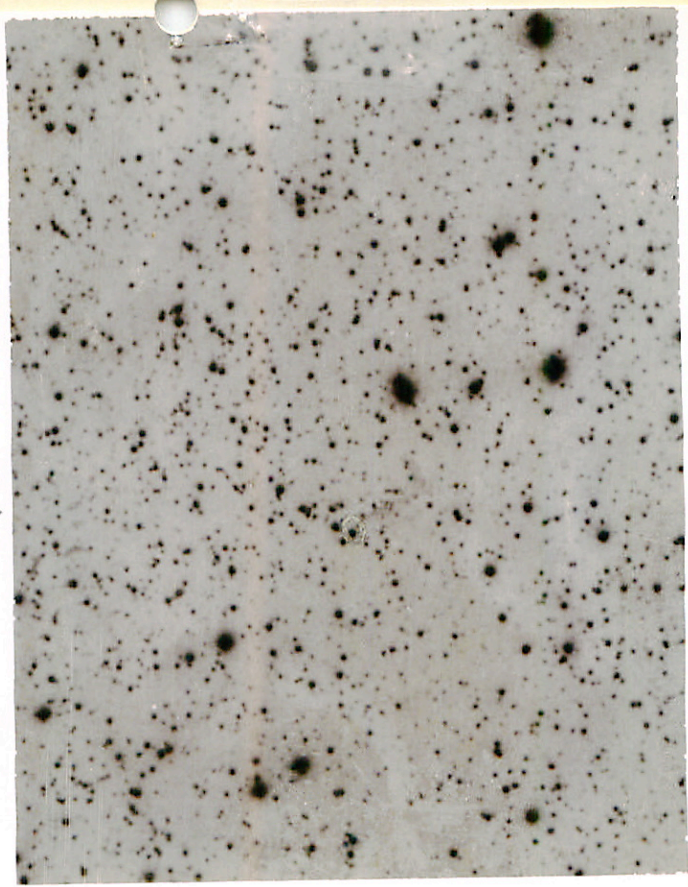
17

30

18

15 11

N



11

DE Ryan

8 53 26 40 05.5 11-11.5

0.33

Chub
Coral

107864

12 22

14 -30 10

6.6 gmo

BV ✓

R/V ✓

W Eni 04 10 16 -45 12.5 78-13.0

(No) 21mm

374 d

M22

Tlod 05 18 11 -33 44 66-12.6 M¹⁴e

225

23 Oct

10.86 +1.39 +0.56 23 Oct 69
9.54 +1.28 +0.5 17 Nov

3 Dec 69

(B)

7.33 +1.915 8 Nov 69

1879 X 00 2132 -14 07 6.6gm3 ✓ HW

6/11/85 X 00 5749 + 00 37 7.6gm ✓ Halo

$P \times V \mu$	12	03	03	-05	36	7.7-8.1	10^0	
$Z Z \text{ Len}$	13	58	07	-47	05	9.2	-10.	
$C E V \mu$	13	47	44	-01	47	8.8-10	10^2	Big night to night photos in R.F. ✓
$NW \text{ Lib}$	14	29	14	-16	41	9.5-10.2	10^2	84 62-100
$P \mu \text{ Sup}$	15	54	³³ 45	-37	^{42.3} 44	9-13	$6-5 \pm e$	
$V 520 \text{ @ } \mu$	07	21	00	-29	11.5	10-11.5	10^0	10^0 ✓
$S S S C_0$	16	53	18	-32	35	9-10.5	10^2	✓
$BW \text{ Set}$	18	36	14	-06	49.5	8.5-9	10^8	✓

RAH ~~x~~ 23 42 17 -15 27 5.8-11.5 ¹⁰⁰ ₂₀₀ ✓

205577 22 05 30 +11 37.5 23 gm 1 HV ✓

~~213853 x 22 33 00 +00 26 for 7 gm 0 ✓ HV~~

220876 x 23 25 50 -13 06 75 gm 3 HV ✓

223963 x 23 5²~~2~~ 28 -9 28 7.4 gm 1 Halo ✓

224186 x 23 54 20 +15 03.6 6.3 gm 4 ✓ ⁶¹⁴⁴ HV

HO 224225 x 23 54 ²⁶ ~~4~~ 2 -22 10 24 gm 3 ✓ HV

HO 224697 x 23 59 26 ⁰⁷ -00 27 70 gm 2 ✓ HV

13 X 226
7754 00 15 25 -30 24 L.P.B.^d

13.5-14.2

(✓)

17 Day

19

12 Sept
2nd

2 Oct

3 Nov

9 Jan

Physic
15

18 Day

22

16 Sept

20

3 Oct

31560

Medians
Rr

4 54 26 -28 36 8.12+108

RS

✓
283V (R1)
W

27498

4

18

42

-2

42

2.3

gmy

B ✓ ✓

PR ✓ ✓

1125

62702 17 54 12 -65 07 7.31 +121

6.52 +0.43 12.20

~~1121~~ ✓ ~~1122~~ ✓

15mg²⁰ 7.33 +1.215 +1.24

MVS

SY Hor

4

13

22

-46

31.5

114 - 121

↓

✕

20177

3

11

12

-54

31

21581257

✓

32

200 1872

16115 PV 2 33 42 - 9 35- 8-3R3

12226 0 15-07 +1 41 2.3 gms

~~1824 0 21 30 -16 06 6.4 gms~~

✓ REVIEW 6.0

30562 4 47.07 -5 43 5.28 46 +19 ⁸⁵

36283 PH³ ✓ REVIEW ²

37171 5 35 32 +11 01 6.02511 ✓ RPV

RR Eni 1967: 02 50 30 - 08 24

X 45

X 2 7.4 - 8.6 97 75 III - 50°

~~X~~ 1850

3 Oct

17 Nov	7.03 + 11.02	11.26	17 Feb 69
19	7.50 + 11.00	11.29	17 Mar 69
20	7.54 + 11.59	11.27	19 " 69

203 Oct 6

3 Nov
 3 Dec
 3 Jan
 3 Feb
 3 Mar
 3 Apr
 3 May
 3 Jun
 3 Jul
 3 Aug
 3 Sep
 3 Oct
 3 Nov
 3 Dec
 3 Jan
 3 Feb
 3 Mar
 3 Apr
 3 May
 3 Jun
 3 Jul
 3 Aug
 3 Sep
 3 Oct
 3 Nov
 3 Dec

Scale: 35" = 1 meter

RR 32

F



2

Prime 8 14 55 +11 49 203 d

M3V RI

6.2 - 11.8

var

⊕

Ⓜ

Ⓜ_B

815p & wt 58 +12 39 6.8 gmt

σ Pump

165401 18 off 05 404 39 6.79 463

~~✓~~ ~~1R~~ 2R

1503364 18 off 415 56.5 8.64+66 τ Pump

15
① ✓ 2R 2R ✓

AW 14W 18 21 15 718 142

23 25

56

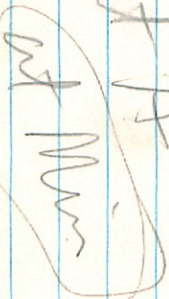
158
+ 1803678

10.0 1962

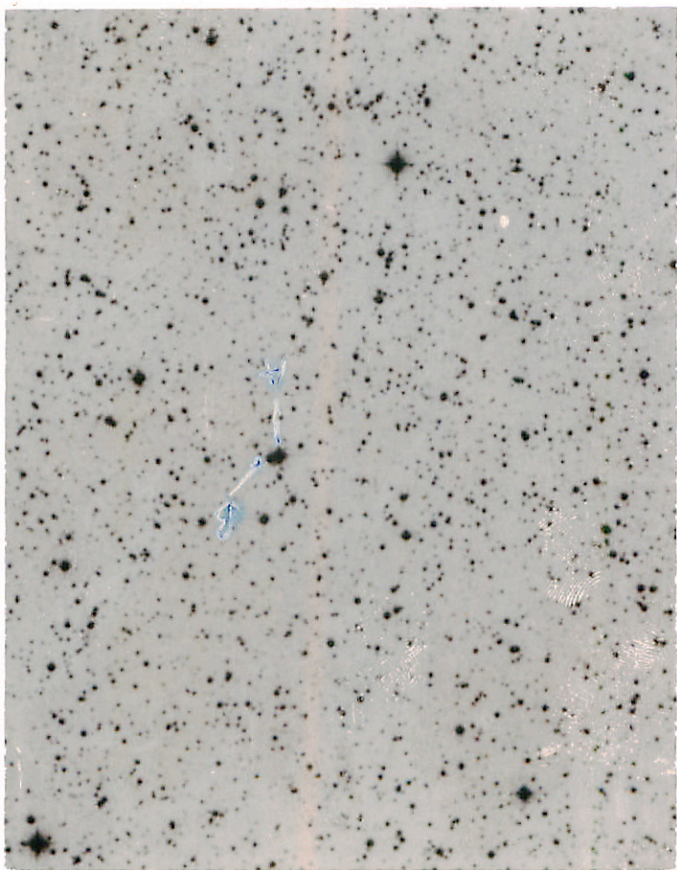
9.5^{un} - 10.9^{un}

8.8^d

100" 

1mg light A


2011/10/10



3

10

R May

1867 02 52 45 - 50 01.5

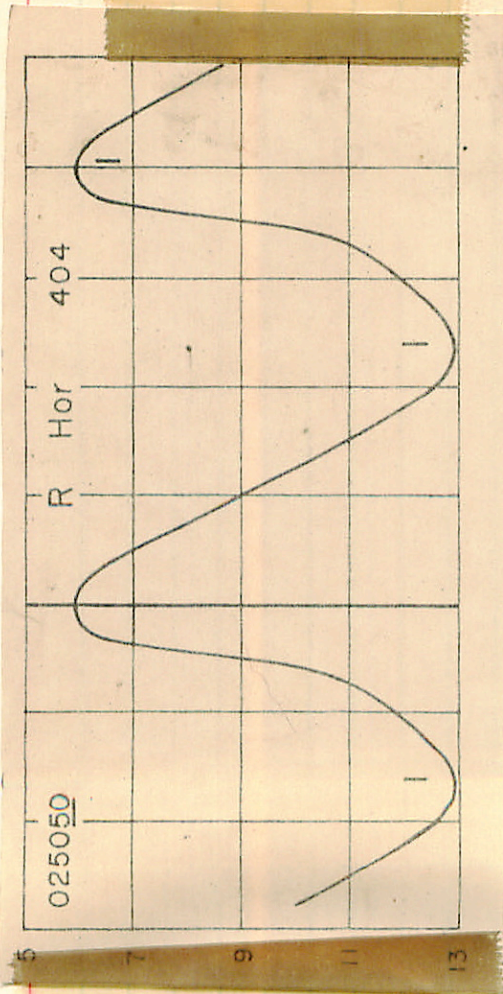
47-14.5 402-6 d 177e -57°

Dec 17

28 13
14

27
28
29

Jan 26



by AASVO

Observer: R. Hor

Scale 56" = 1 min



Comments: