

(RI)

AH Am

06

24

30

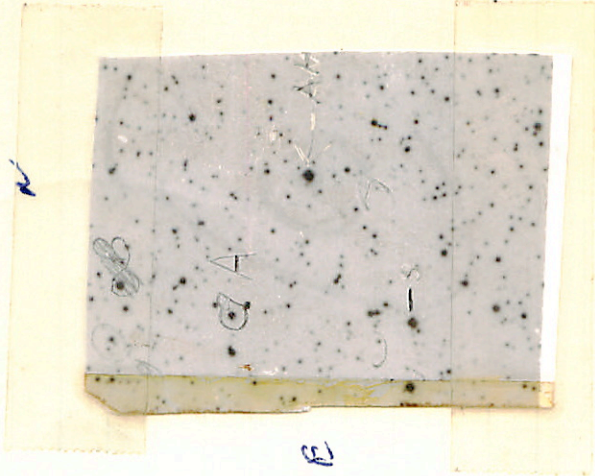
+28

01

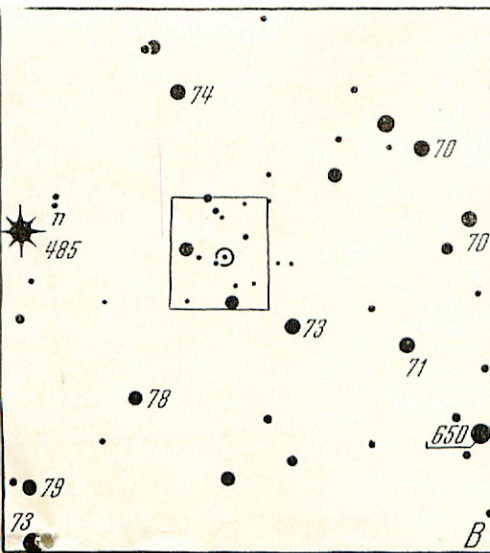
^d 0.484

10.2 + 0.64

9.05 + 0.38 3.40 2.90 2.75



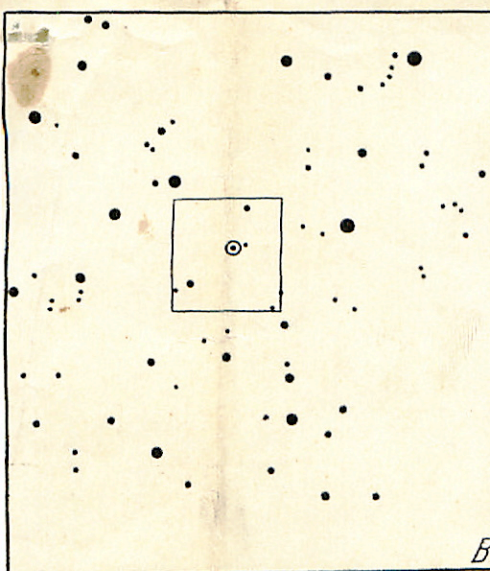
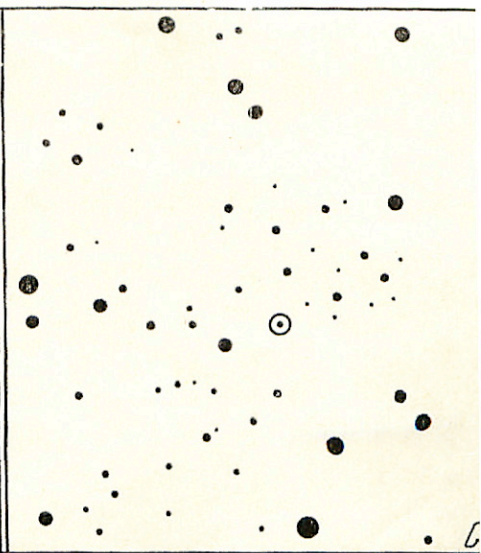
E



BB Vel

$8^h 33^m 35^s - 47^\circ 1' 9'' (1900.0)$

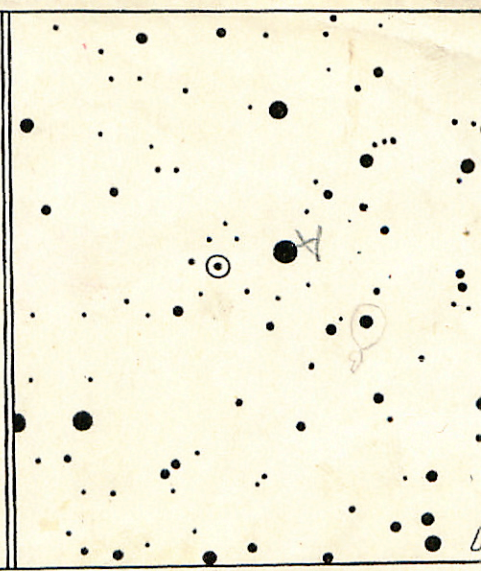
$8^h 36^m 2^s - 47^\circ 12' 9'' (1950.0)$



BV Cen

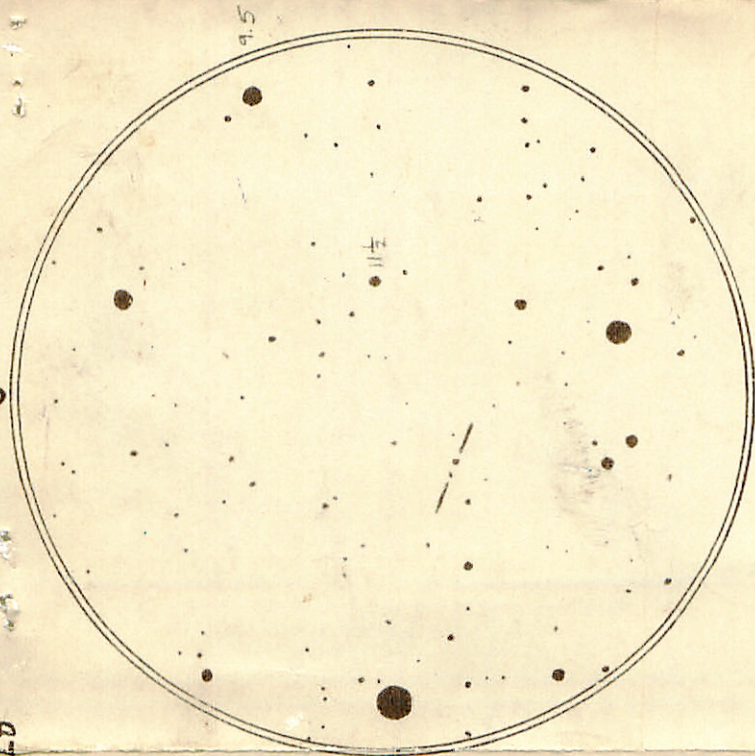
$13^h 25^m 25^s - 54^\circ 33' 0'' (1900.0)$

$13^h 28^m 10^s - 54^\circ 43' 0'' (1950.0)$



30' Field

S



G111-72 AND G111-71

R.A. 8H 16M 47S
DEC +38° 44.3'

MU- C.38 PA 212°

MAGS 14.7 & 16.4

SEP = 34"

PRIMARY IS RED; COMPANION
APPEARS BLuish.

LAWELL OBSERVATORY
FLAGSTAFF, ARIZONA, U.S.A.

FDdc April 7

XX
4667

614-137

✓

12 21 07

-28 275

4667 X

4667

12 20 2 - 28 22

17.5 R 0.60



12

0.99

0.78

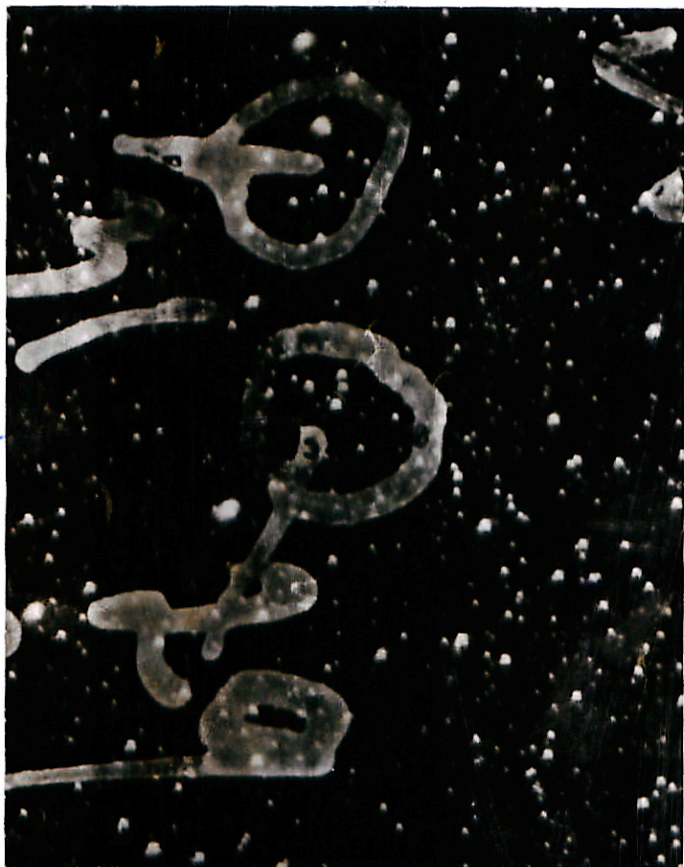
135

614-137 12:17.6 - 28:06
m 15.2 .599 154.3

0.78

0.78

12



15mm
 white
 1/10
 1/10

1/10
 1/10
 1/10

5235 13 30.5 - 66 32 1339 0.36

→ 13 3140 - 66 37



9.

45

11/10

6146
263-189

15 21 89

✓
15 25-

15 20 4
6:02 51

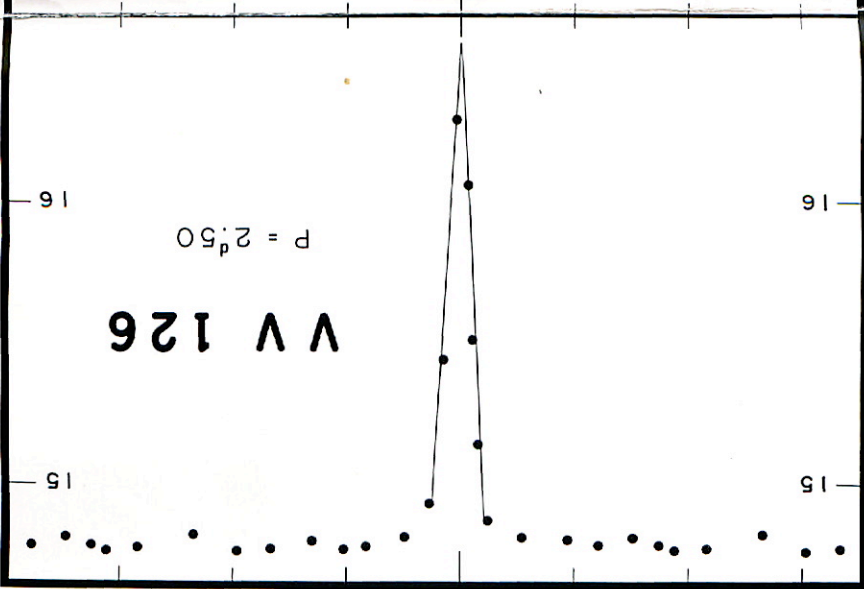
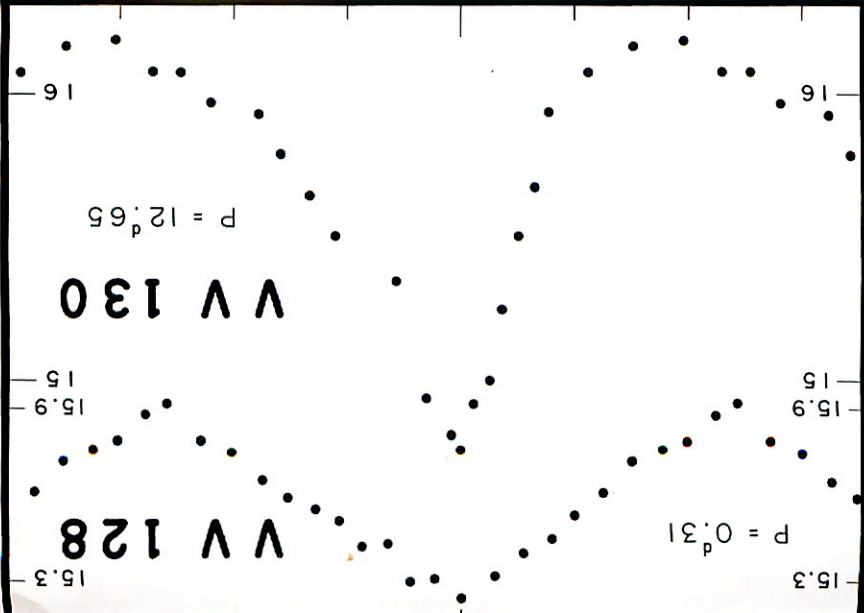
17.9 9 5.21





765-

8-42



TO _____ FROM _____ DATE _____

SUBJECT Jesse has a direct 200" print
of this 1950

L 1046-18 12:14.3 + 3:14

 $\mu = 0'' : 70$ 14:7_m - 14:9 a 3" due south._____
L 745-46 7:35.8 - 17:19 ⁽¹⁹⁰⁰⁾ 12:9A
17.6_mHumason took a 100" plate
during the early forkes ??

6733

1652.17

-6417

16507-10591

160855L



6733

16507

20c 1363
Wolff 1037

22 - 21 - 29
22 - 23 - 44
22 - 26 - 0

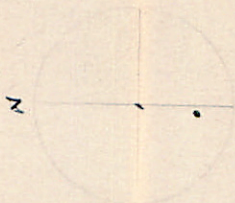
+5° 6'
+5 19
+5 33

1855
1900
1945

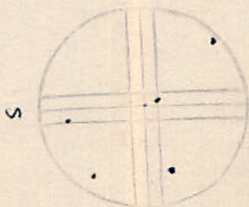
14.0
sd 152:



N
BD H
one of these?
FA chart



For



at



373

40
8-8
~~8-8~~

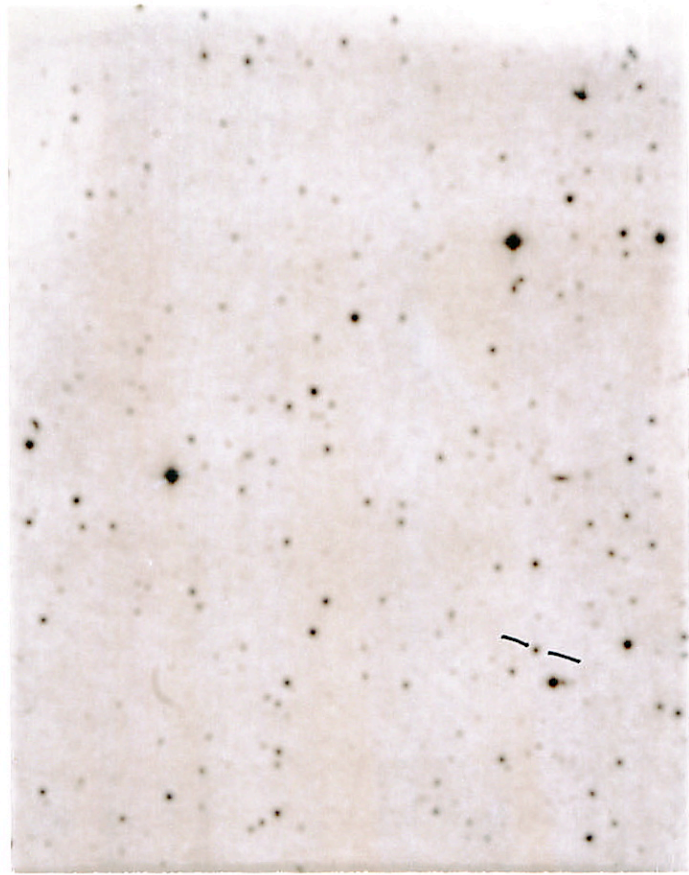


158-8

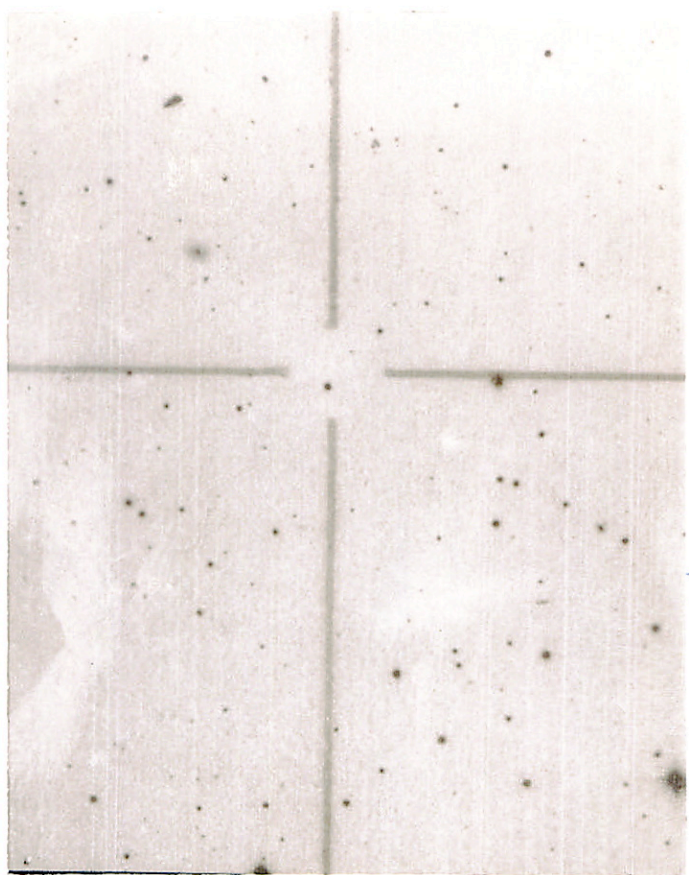
167

316

35
8-5



1950 0^h 43.3^m -21° 5.1' N



E

S

W

LTT 424

756 . "

908

