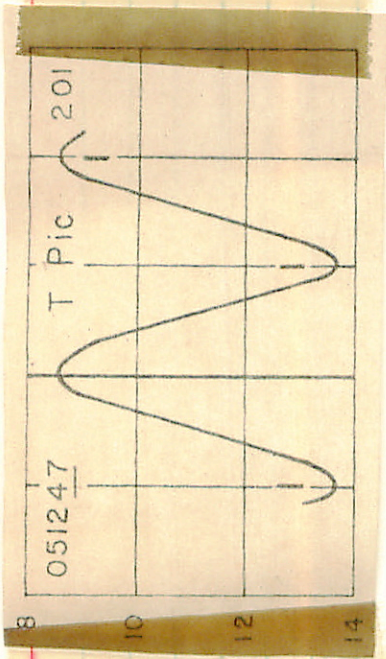


T Di

1967 05 14 11 -46 57

7.9 - 14.4 2006 Me



Key AA810

Observer:

Date:

N

10

E

⊙

47

Scale: 56" = 1mm

T. Pic

Comments:

1129 9-10

SW Mon 6 25 25 +5 24

5 ,

9.45 / 1187 11.58 81Mar73 ,

(1)

7.60 11.55 / Apr 23

Went to work

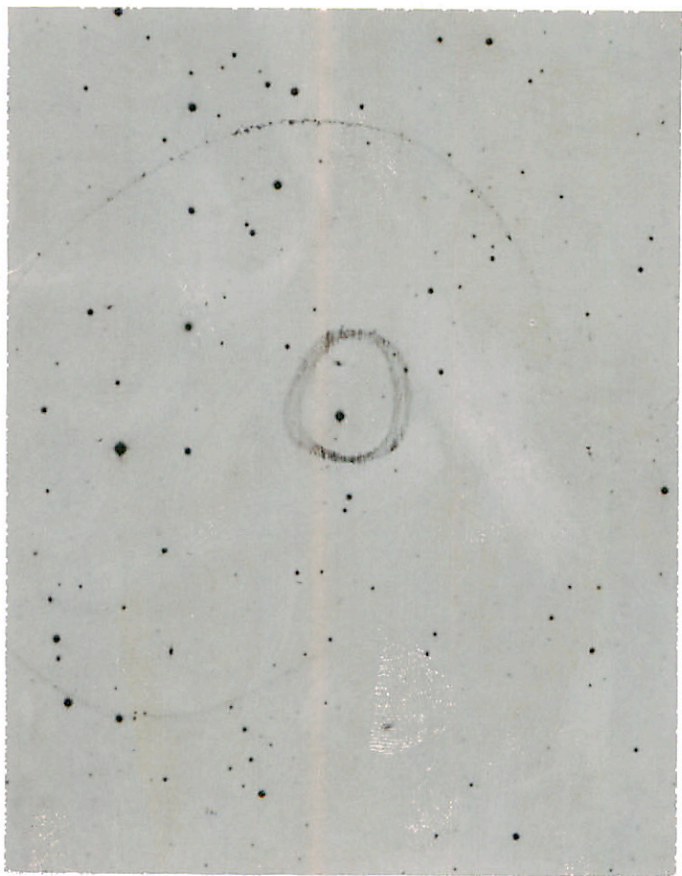
TYMMA 12 04 01 +56 35.3, 500

06 33 +56 18.6 1550

07 09 +55 14.7 1962

11.7-12.3  
var<sup>1</sup> var<sup>2</sup>  
var<sup>3</sup> - 0.301

Chalk



301171





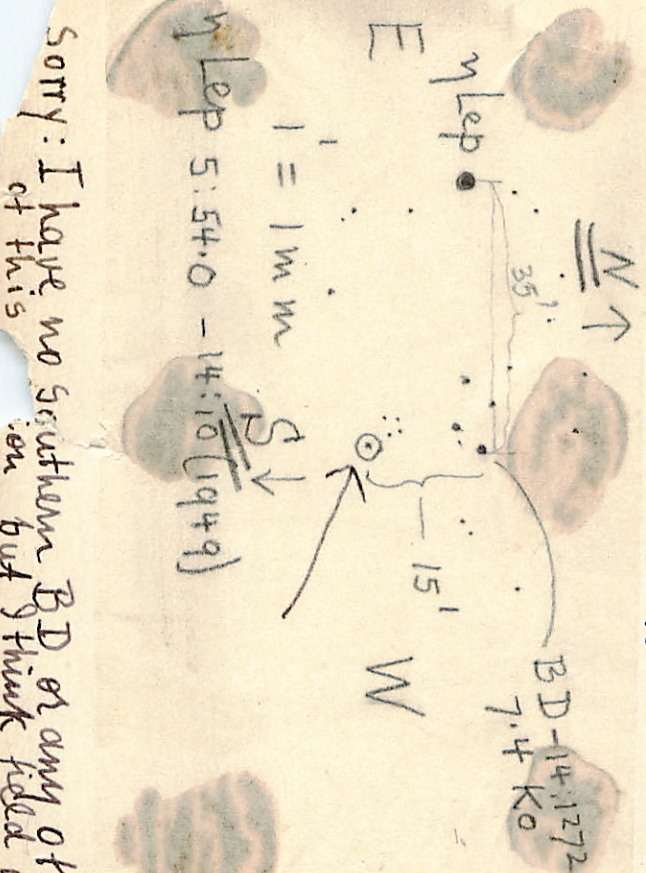
811-11 5:51.6 - 14:24 (1949)  
LTT 2402

11.3 pg

White  
4

short  
upside  
down

113 5  
0:43



Sorry: I have no southern BD or any other chart  
of this area but I think field is easy

8998

23 43 00 - 18 24

24

W

525-727 833-109 - 11 Aug 57 36

525-040 123 808 952 2

2.260

525-727 833-109 - 11 Aug 57 36

525-715 822-102 2266 11 Aug 57

529-721 878-107 - 12 " " "

525-714 835-117 2053 25 Aug 57

524-711 831-106 - 13 " " "

525-715 839-124 2260 25 Aug 57

526-722 837-113 2258 14 Sept 57

525-714 826-112 2258 26 "

525-715 828-110 2264 21 Sept 57

523-714 838-121 2253 27 "

530-721 835-107 2265 22 " " "

526-713 837-121 2257 29

520-663 845-68 26 Sept 57

525-713 836-112 2255 30

525-691 829-128 - 27 " " "

525-712 830-112 2255 31

526-719 837-107 2260 12 Oct 57

525-712 830-111 2255 31

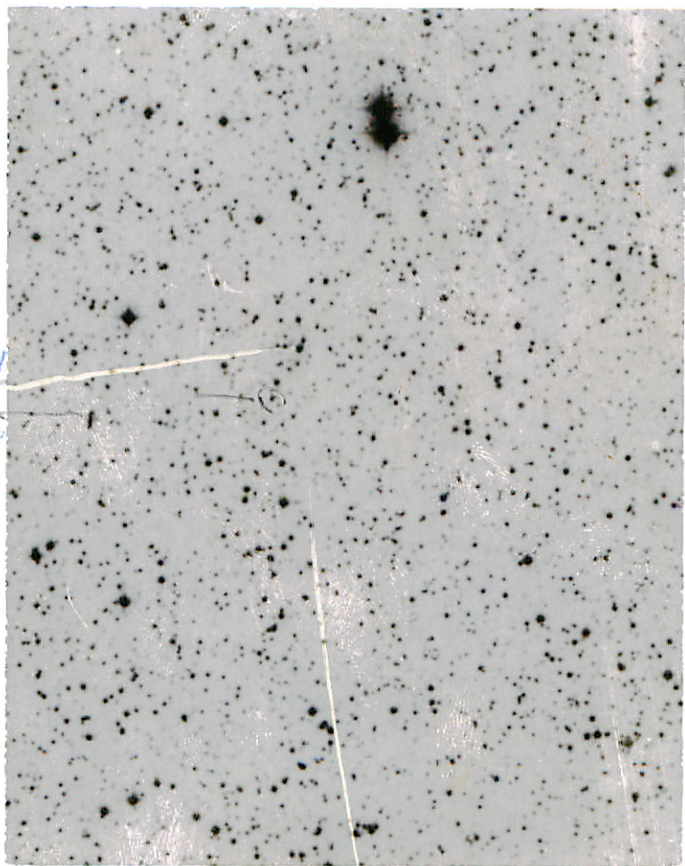
525-719 833-117 2263 13 " "

525-715 832-110 2257 14 Oct 57

525-723 839-115 2263 21

527-712 819-108 2257 31





31

✓

—

6 30 14  
G-24-9/10 20 11.29 +6 32.5 1450  
12.04 357 1962

$\frac{16.0^{100} + 1}{15.0 + 3} \left. \vphantom{\frac{16.0^{100} + 1}{15.0 + 3}} \right\} 102''$

7 pulld

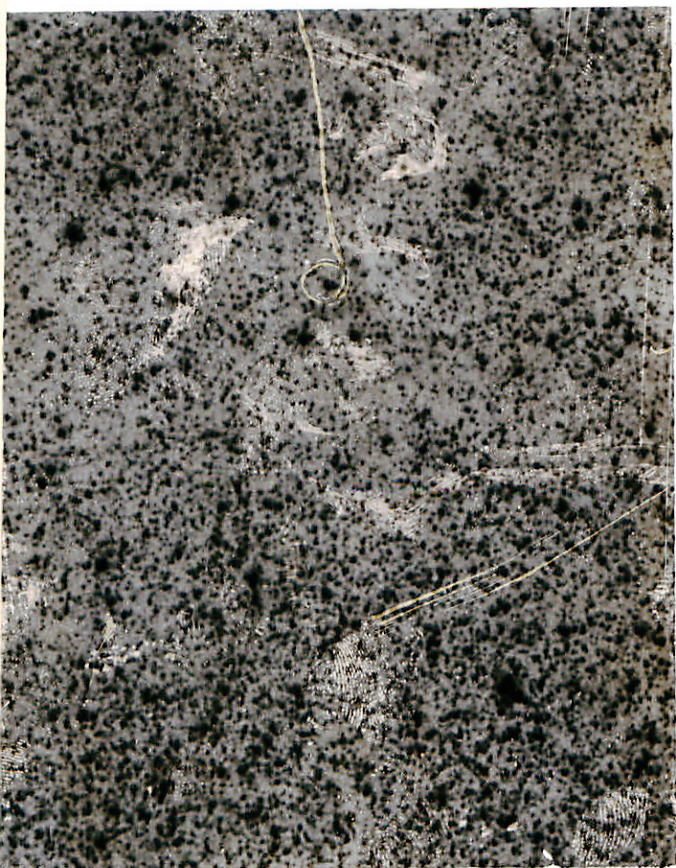
160 Red

15.7 + 0.40 440

13.20 + 1.5 RR

14 del  
(14161)

20 37.2 + 9 57 1443 (B) ex  
0.2 } 0.2 f 1' Sand  
C 8.5 }





EY egg

1500<sup>1</sup>±

19 49 00

56 44

131 59 1855

52 40

13.1 1950

73

11.4-15.7

53 03

1.9

08

15.0 1962

( (

( (

M46m

12 07 42

-43 54

2 28

- 22.2

12 10 10

-44 16

←

12.4 - 15.0



748 2 39 00 -64 23 842 -56 2300 Nbrs

6.56-722 853 -52 2303 50  
6.54-727 856 -50 2300 7 Nbrs

6.55-721 852 -54 2300 59  
6.54-723 852 -53 2303 59

6.55-723 854 -53 2309 26  
6.55-724 852 -52 2304 9 "

6.55-722 853 -53 2301 133  
6.54-717 848 -44 2304 14 "

~~6.54-725 850 -49 2304 12 Nbrs~~  
6.56-723 864 -47 2300 16 "

6.55-720 848 -57 2304 22 Nbrs 60  
6.55-725 853 -52 2301 26 " 26"

6.55-722 855 -61 2309 28 " "  
6.56-721 844 -57 2304 28 60 "

6.56-720 848 -51 2309 24 "  
6.57-720 847 -63 2302 3 " " "

6.55-722 847 -57 2304 25  
6.57-718 843 -61 2303 4 " "

6.56-720 848 -59 2306 26  
6.57-724 850 -51 2304 5 " "

6.55-724 849 -59 2309 49  
6.54-719 856 -76 2306 6 " "

6.55-723 850 -52 2300 5 " "  
6.56-717 844 -68 2303 7 " "

6.55-729 855 -63 2301 6 " "  
6.58-719 848 -58 2304 8  
6.55-717 848 -64 2304 12 24 60

140283 15 41 50

722 -330 758 -558

722 -332 766<sup>±6</sup> -574<sup>±7</sup> 2.124<sup>(20)</sup>

723 -334 766<sup>±6</sup> -568<sup>±6</sup> 2.124<sup>(24)</sup>

722 -333 766 -565 2.125<sup>55</sup>

722 -332 775 -562 2.119<sup>13 m 70</sup>

723 -335 772 -565 2.115<sup>11 m 70</sup>

721 -333 770 -554 2.119 42480 60

722 -334 775 -559 2.123 5" " " 7.21 -340 779 -571 2.114 28 " " "

721 -342 780 -571 2.122 6" " " 7.21 -331 761 -571 2.119 3 m 80 36 "

721 -335 770 -559 2.125 7" 723 -338 779 -562 2.118 2 " " 40 "

719 -334 763 +544 2.123 8" 722 -337 775 -571 2.113 5 " " 36 "

722 -338 773 -541 2.121 10" 36 723 -334 775 -566 2.124 6 " " 40 "

724 -335 779 -555 2.125 11" 723 -343 784 -563 2.124 7 " " "

723 -336 787 -564 2.123 12" 724 -341 787 -569 2.124 8 " " "

724 -331 766 -554 2.121 13 722 -342 779 -573 2.121 10 " " "

-10

724 -333 780 -562 2.122

723 -340 780 -558 2.123 14 70

723 -328 764 -549 2.124 15

722 -336 775 -567 2.119 16 "

720 -335 769 -556 2.124 23 " 60 "

719 -331 766 -554 2.118 24 " "

720 -344 787 -554 2.117 26 40 "

724 -336 778 -564 2.118 26

720 -335 778 -566 2.116 27 " " "

721 -340 779 -571 2.114 28 " " "

723 -338 779 -562 2.118 2 " " 40 "

722 -337 775 -571 2.113 5 " " 36 "

723 -334 775 -566 2.124 6 " " 40 "

723 -343 784 -563 2.124 7 " " "

724 -341 787 -569 2.124 8 " " "

722 -342 779 -573 2.121 10 " " "

6504

17 27 00

-08

11

1150

July Pop

6.40 -336 879 -267 " 6.39-339 880 -271 2.17 14 July 80 36

6.38 -340 882 -260 (18) 6.41 -343 881 -255 2.17 19 July 80

6.39 -338 881 -263 2.17 20 July 80 40

6.39 -339 881 -268 27 Aug 78 6.39 -338 882 -251 6 Oct 79

6.39 -336 884 -271 29 Aug 79 6.39 -330 869 -244 6 Oct 79

6.39 -342 888 -264 30 " " 6.40 -338 883 -266 9 Aug 79 60"

6.39 -333 876 -261 11 June 79 6.39 -341 881 -252 10 "

6.40 -336 893 -255 23 " " 60" 6.39 -338 880 -259 22 " " 36"

6.39 -341 885 -257 30 " " " 6.39 -339 882 -258 23 "

6.39 -339 882 -262 8 July 79 40" 6.39 -337 882 -260 25 " "

6.39 -341 894 -258 16 July 79 60" 6.39 -335 882 -260 1 Sept 79 40"

6.37 -346 874 -299 15 July 79 36" 6.39 -338 881 -256 2 " " "

6.39 -339 893 -262 8 Aug 79 60 min 6.38 -339 882 -255 3 " "

6.40 -330 892 -257 13 Oct 79 36" 6.38 -337 881 -254 4 " "



6.870-713 854 +25	2.249	1	Wm 58	36"
6.870-711 847 +36	2.301	2	"	
6.870-711 850 +41	2.298	3	"	
6.774-705 834 +44	2.292	13	from 78	
6.774-700 844 +36	2.243	14	"	75
6.774-706 839 +33	-	14	Wm 78	
6.777-703 837 +40	-	15	"	
6.778-703 836 +36	2.249	24	"	
6.774-717 842 +27	2.247	25	"	
6.774-710 837 +22	2.244	29	from 74	
6.853-720 842 +33	2.300	29	"	
6.870-705 843 +37	2.300	30	"	
6.774-714 851 +34	2.245	31	"	
6.774-709 842 +34	2.246	17	74	
6.871-718 844 +36	2.304	6	28 75	
6.870-714 853 +24	2.248	7	"	
6.872-708 853 +34	2.243	12	84	
6.871-707 841 +39	2.287	18	"	
6.870-712 843 +39	2.301	19	"	
6.872-707 840 +17	2.247	20	"	
6.774-706 847 +45	2.249	22	"	
6.774-712 851 +28	2.246	28		
6.870-710 847 +33	2.246	23	Wm 78	
6.870-702 835 +36	-	24	"	
6.870-713 852 +25	2.301	19	from 74	
6.870-711 853 +24	2.248	20	"	
6.870-714 852 +33	2.249	21	"	
6.871-707 855 +24	2.247	22	"	
6.870-715 856 +28	2.301	24	"	

762      2      33      60      -6.2      42      6.80-710      1845      1040      2300      50      550  
 $\pm 6$        $\pm 7$        $\pm 9$        $\pm 4$        $\pm 6$        $\pm 7$        $\pm 8$        $\pm 5$       30

6.80-710      845+040      2,300

6.80-704 825 +54 - 275 1775	6.80-712 845 +44 21 20075
6.79-712 845 +44 2294 126 1775	6.78-705 839 +48 22 20075
6.79-714 845 +33 2295 13 " "	6.80-712 851 +36 2296 23 20075 <sup>60"</sup>
6.80-710 846 +39 2294 16 " "	6.80-715 847 +34 2291 25 " " 36"
6.79-709 845 +31 - 9 20 24 "	6.80-709 848 +30 2296 26 " "
6.81-711 848 +47 - 9 " "	6.81-703 833 +40 2298 27 "
6.80-704 833 +36 - 10 " " "	6.80-718 850 +32 2293 29
6.80-710 835 +35 - 11 " " "	6.80-707 845 +35 2305 30
6.81-712 852 +47 - 23 " "	6.79-705 844 +41 2290 5 20 78
6.80-709 850 +28 - 24 " "	6.79-707 847 +40 2296 23 " "
6.79-709 845 +36 - 25	6.79-708 846 +43 2292 24 20075 60"
6.80-718 858 +28 - 20 20075	6.81-713 850 +32 2297 18 20 78 60"
	6.79-712 852 +28 2299 19 " "



142-03

17

23

29

-29

40

V = 12.0

I = 100

B56.9

+3.4