

L 211-90

BPM 26998

20:36.1-58:28 60

13.9 .050 126

Bruce blue

211-90

L 117-181

BPM 13673

20:50.0-69:20

16.9 "06

181-211

L 47-70  
BPM 13853

21:04.7-77:49

15.6 "04

South up }

47-70



L 117-117  
BPM 13870  
21:06.6-67:56  
17.3 <sup>N</sup> 07 171°

True blue

117-117



L 262-18

BPM 23075

14.569-51:02<sup>00</sup>

13.4 .063 241

Bruce yellow

L 263-9

BPM 23380

15:16.0 - 50:09<sup>00</sup>

14.0.079 232

Buce blue

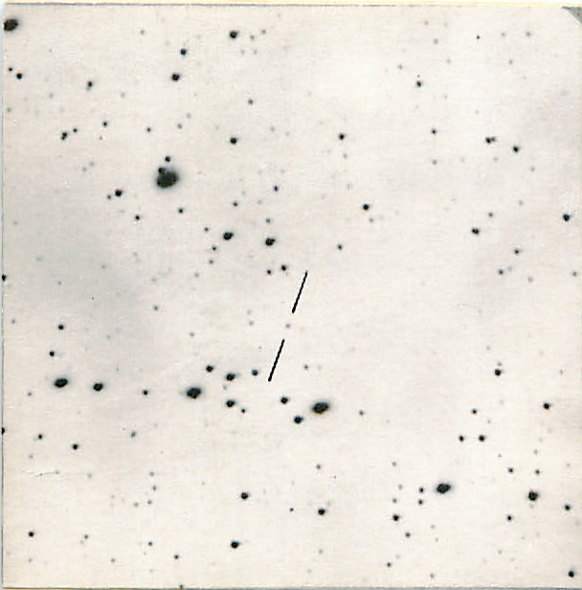
L 265-18

BPM 23823

15.56.4 - 50:08<sup>00</sup>

15.2.040 190

Bruce blue



L 265-55  
L 266-21

BP M 23943

16:04.6-50.50' 00

15.6 .064 236

Bruce blue

L 262-9

BPM 22878

14:40.2-50:34' 00

14.0 = 063 247

Buce yellow