

3043

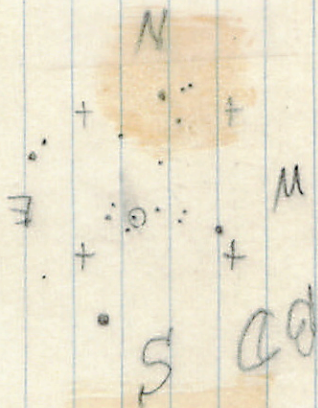
→ 8 01 54 -53 59 &

8 01.4 -53 56

14.8 R 0.43 "

242-101

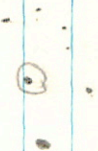
..v.



(50) 7870-2

→ 6 07 24 -44 34 ←
2466 6 06.8 -44 34 15.0 h 0.48

380-54



3134

818113

→ 8 25 32 -12 40 \leftarrow
8 246 -12 36 1249 0.35

••
↗•

L 1126 - 68
15. pg

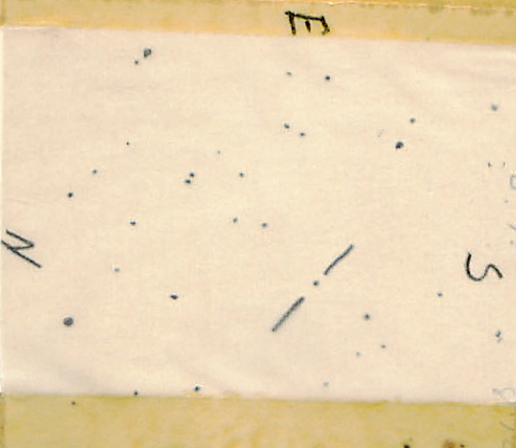
(1952) 14:48.9 + 7:47

S

E

W

N



E201 + 16 38.6 to 54

15045) L. 24 to 30 to 0.05 brown

379 .185 .194 226 2.943 Cr

379 555 250 689

249 645

red

379

352

43

Ap? Am?

5303

14 11.9 -80 46

123948

490 to 28 to 11¹¹ low in

342
331

.123 219 885 2.819 12322

345 256 750

213 744

-9.4 ~~Sp. B.~~ 25p.

—

N
L-1068-14

19:21.0
+ 0:55 ('00)

19:23.8
+ 4:01 ('55)

13.0 0^h15



0

LD 5 678 A (BD chart made by J.P.)

α
1950 19h 17.1m

δ
1950 -7° 46'

Enlargement alt 25' across.

103a-0 g F/1 @ 3/20 alt

of 2 1/2" x 3" statel with 5 1/2" x 3" glass.

Focus 2.07.

Exp. A alt 20" B alt 70"



L-710-30

S

PD



1:35-5-5:16 S

N

Q

E

N

rev

LBS XS

573-109

22 25 20 -34 22

22 246 -34 27

14.41 -0.227 0.21"

13.77 +1.35 } 9"

↑ N



300-34 3 42 23 75 -45 54.5 53.0
8 41.8 75 -45 58 15.0 -0.25 0.17"

1
1
1

Q50M31544

✓

5

424

0

43.3

-21 51

14.5 g 0.24

682-20

•
•
•

404

0 41.6

-14 12

12.0 g 0.36

795-68



Parker 0521-34

W+S	1965	14.47	+0.67	-0.30	3
	Nov 22 1967	15.05	+0.92	-0.04	1
	Dec 30, Jan 1 "	15.06	+0.88	-0.12	2
	Jan 31, Feb 1 1968	15.05	+0.92	-0.145	2

ADS2644

2/3 114
3 38 76

Jan 3 35 05 +00 30 55.8 209
415 28.83 411

HR1101 3 35 10 +00 19 4.3 F8
ep *

→ 7 50 42 - 47 07 E
7 50.1 - 47 04 14.3 Row

313-33



L 83-2

BPM 14942

22:31.3-70:12

14.0 "07

83-2