

643-32,33

N

E



$23^{\circ}37'23''$   $-1^{\circ}43'.4$

17-19, 15", 175°

23 34 40 -1 35.5

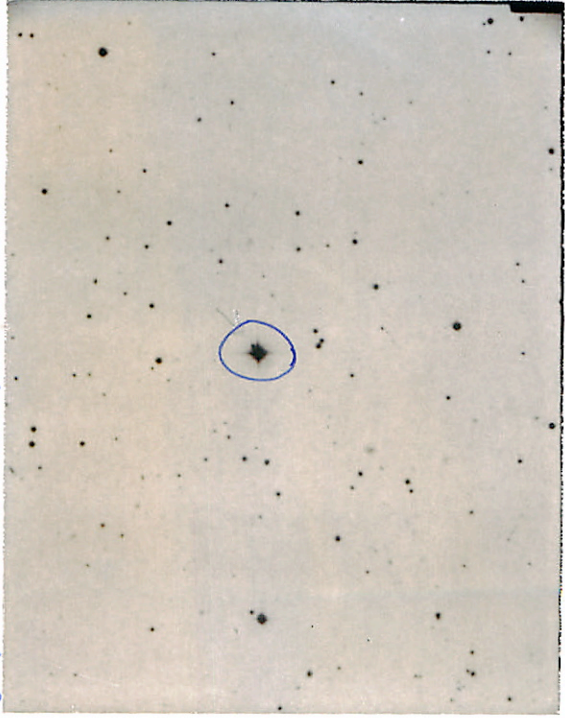
16.9 h-m  
18.5 m



160131

N

E



00h 43m 34s

-5° 55' 0"

9-17.5, 14, 303°

60 44 52 -5 47

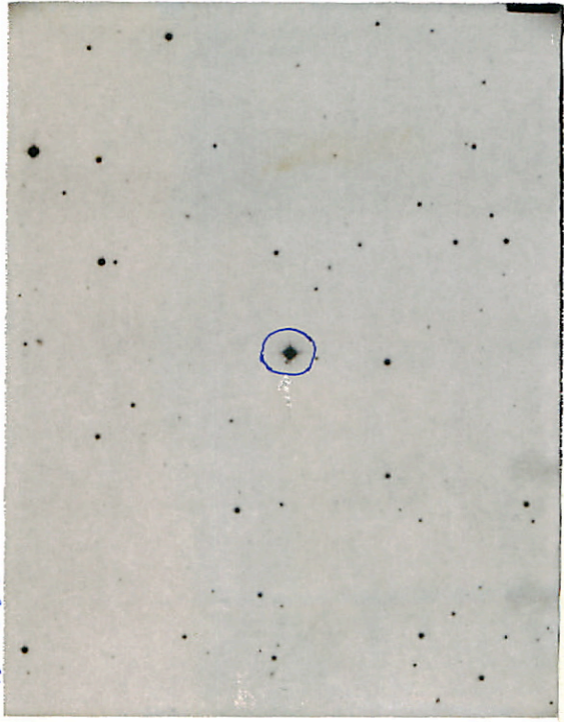
8.8 60  
17.5 9



-23°33'2

N

E



00h49m05s

-23°10'8

9-16.5, 17", 71°

80 44 52 - 5 49

76 84 112



N

11

1870 + 10 + 10 + 10 + 10

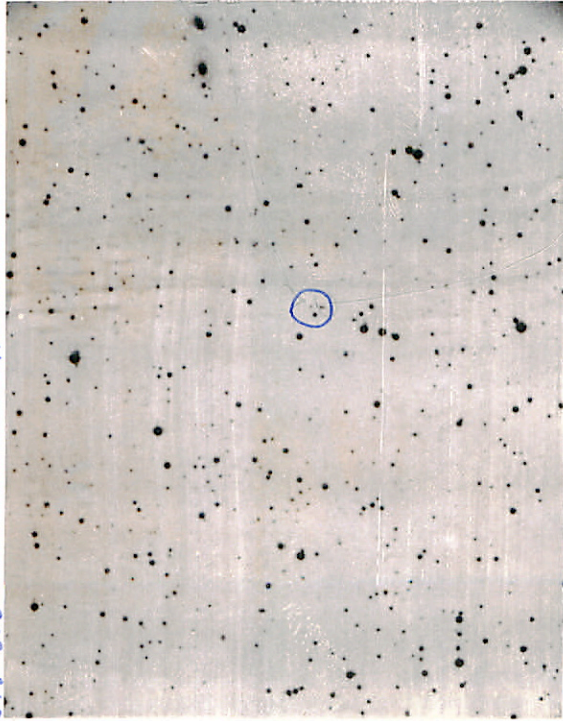
BD +4°40'48" B

1900	19 <sup>h</sup>	12.1 <sup>m</sup>	+5° 03	(A)
1950	19	14.5	+05 06	
1963	19	15.1	+05 07	



695-308

N



E

$20^{\text{h}} 36^{\text{m}} 12^{\text{s}}$   $-4^{\circ} 20'$

April 19.5

FB  
Eh

20 37 32 -4 16

20 m

N

877-73, 14

E



15-18.5, 40°, 29°

23h07m 20s - 26° 36' 1

23 08 40 - 26 28



14.50  
150 g - p  
180 mm

blue

N

E

HV 8002 = PHL 718

1950: 0<sup>h</sup> 08<sup>m</sup>.9 -11° 46'

Ross 193

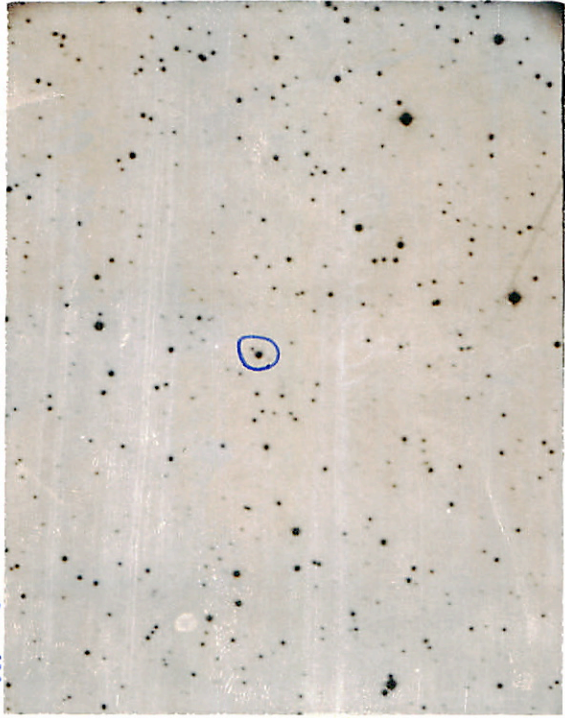
N

E

$20^{\circ}54'06''$

$-05^{\circ}03'$

12-17,  $14''314''$



20 55 25' - 04 57

(A)

0

10.55 4.1.17 14/11/27