

R 137

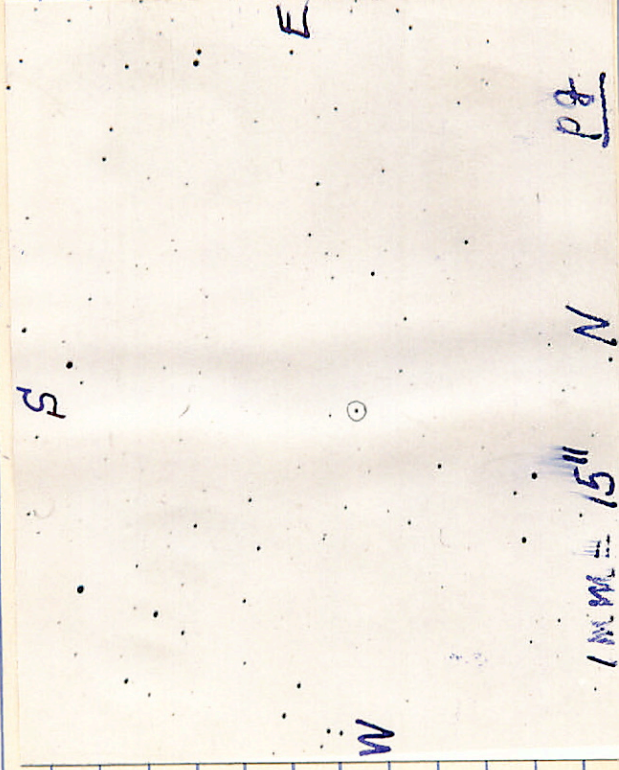
13.8 pg

uncertain

~~left 15.45~~

circle

(1950) 18:24.8 + 4:02<sup>4</sup>



pg

N

1 M M = 15"

W

E

S

-0:4234

N ↑

21:29.3

0.0

1945

wh. dev.

BD \*

Phase 1 min = 1'

LDS 749 AB

21:29.5

0:00  
1949

A = BD - 0: 4234  
9.7 pv 10.7 pg Ko

B: 14.2 pg white

The faint \*  
marked is the  
one wanted but  
a plate of the bright  
\* taken with the same  
spectrograph would  
be useful

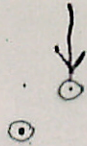




S

E

W



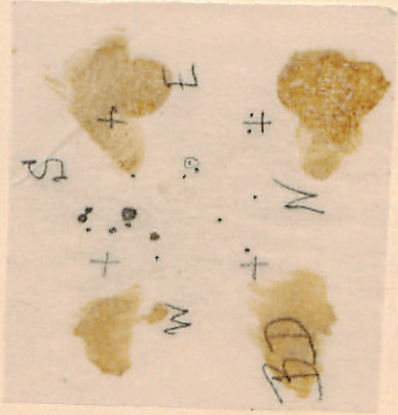
1 mm = 15"

N ↓

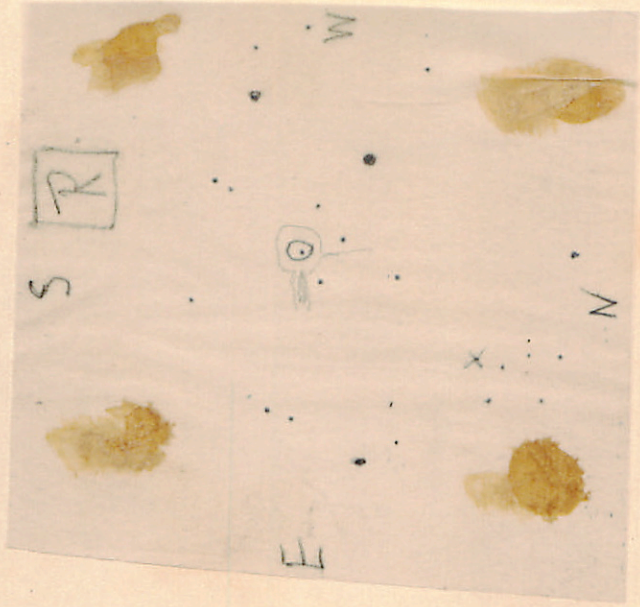
blue plate.

L971-14

C-291C



(1950) 11:15.7 - 2:58



L 938-3

(23-25)

0.0 8.01.0 0.0

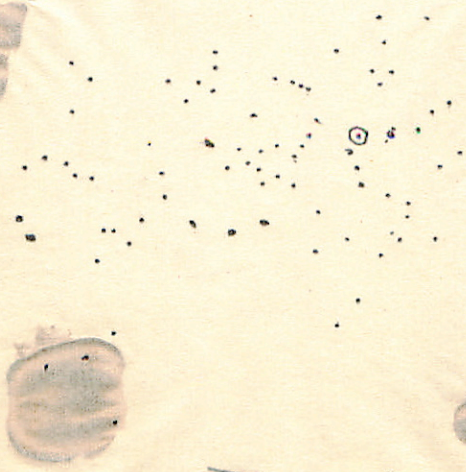
N  
↑  
h938-3 0.008-0.0  
1945

Phase 1 mm = 1



L 930-80

S



W

pg chart

N 3X BD!

1mm=1'

21:45.0

- 8:00

(1949)

\* is n.f

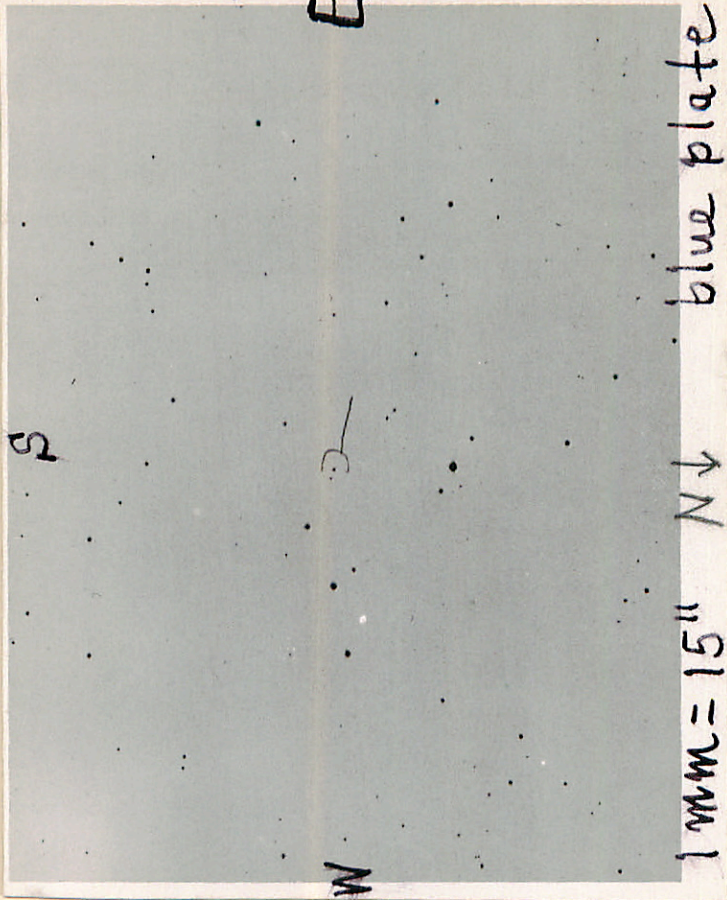
mostly fold

92 ft \*

which are  
nearly equal  
photovisually

\* = 14.1 PG





S

E

2

W

blue plate

N ↓

1 mm = 15''

pre

北

北

北

一

一

L879-1

4:26.2 - 5:32

4:28.9 - 5:25

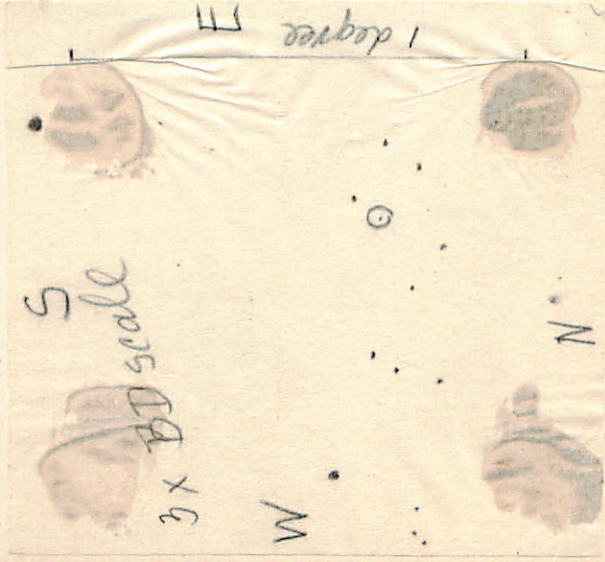
14.8

~~LFF~~ G82-25



L 870-2

LET



1:35.5 - 5:16  
(1949)

12.9 pg white

(I have no southern  
BD charts but I  
think this field is  
easy)

241, 1411 (0.5, 5)

W

2

A



2

2

1 mm = 15''

↓ N

blue plate

L796-10

0:53.3 - 11:45  
(1949)

v. Bright \* 13' north of pm \*  
is 22 Cl<sub>2</sub> 5.5 K<sub>2</sub>O so no other  
identification will be needed.

L796-10 is 14.8 pg and probably  
around F or G in spectrum



E

S

↓ N



0:53.5 - 11:32 - 12:16 2020

W

LDS 275 AB

(1948) q. 34.8 - 37.06

comp 14.0 sep 4" in 35°  
14.2

Both are white dwarfs of same

color index

This double precedes a CPD \*

by about  $2\frac{1}{2}$ " (see enlargement

of 8.1 inch yellow plate) and is slightly  
faint, but the field is quite easy

N ↑

N ↑

W

↓

EE

↓

W

R

S

1 mm = 27"

S

D

vestibled

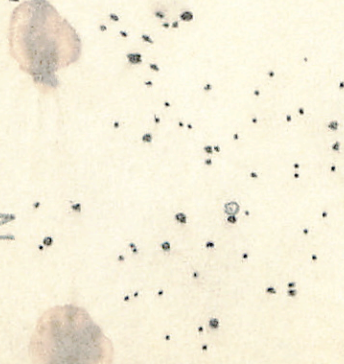
direct

The \* wanted is a close double (sep 4", p.d. ± 35°)  
comp are nearly equal in mag. both are



*Cordoba map*

N



*Cordoba  
chart*

LD.S. 275

L 462-56

0:33 - 36.9 (1900)

82" yellow  
enlarged



LD5 275 = L 462-56

1900 → 32.9 36.54

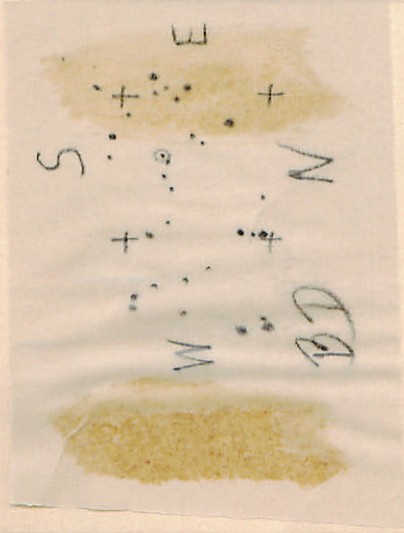
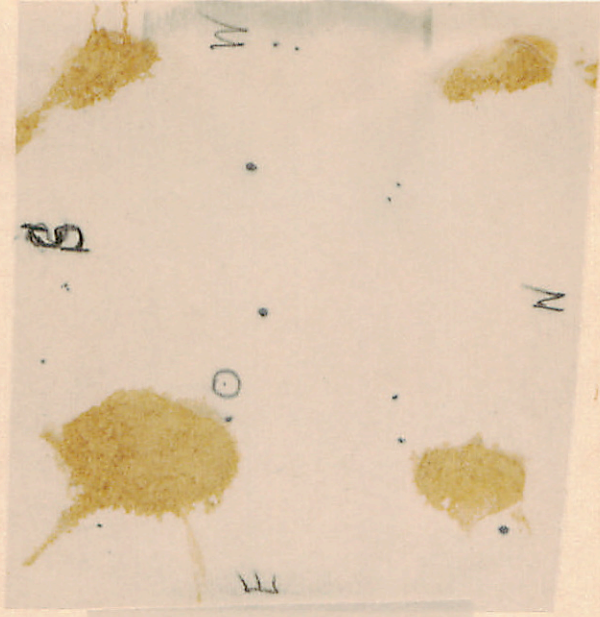
1948 → 34.8 - 37.06

14.09<sup>a</sup> 4"  
14.19<sup>b</sup>

~~A4863 Jan 18 0846 60<sup>m</sup> AB  
A4869 19 0814 22 AB~~

(50) 10:55.1 - 7:15

L898-25

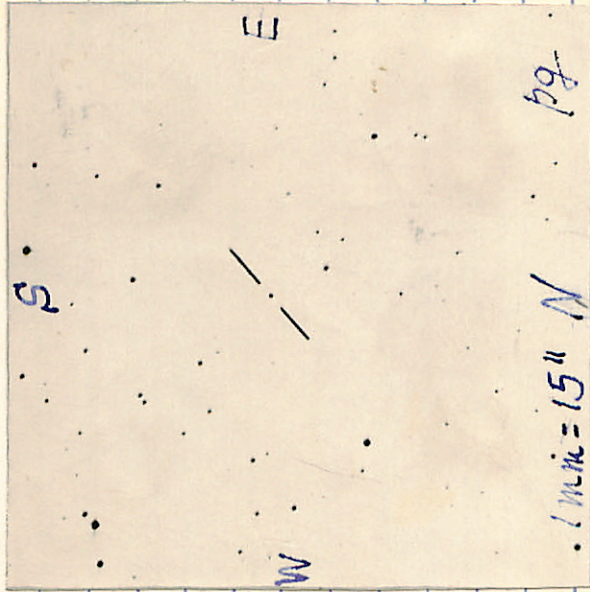


L 1126-68 (1959) / 4:48.4 + 7:47

8:10

4:7

15.0 pg



! min = 15" N . . . pg



BD

14:40 S  
48 (1855)

W+

+

+

E

N

+

+

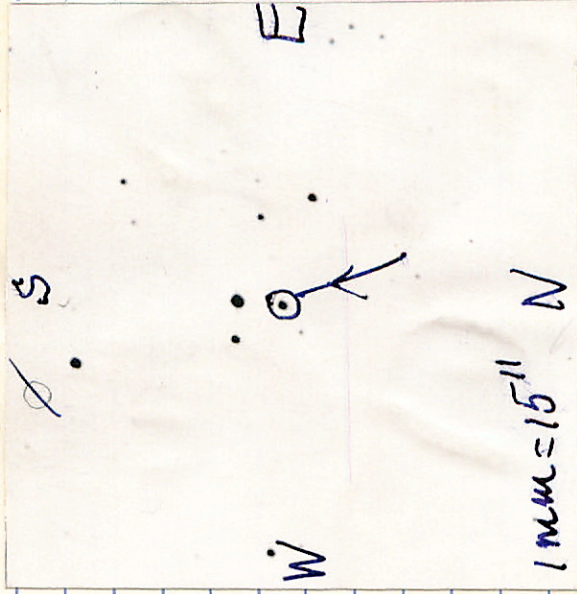
+

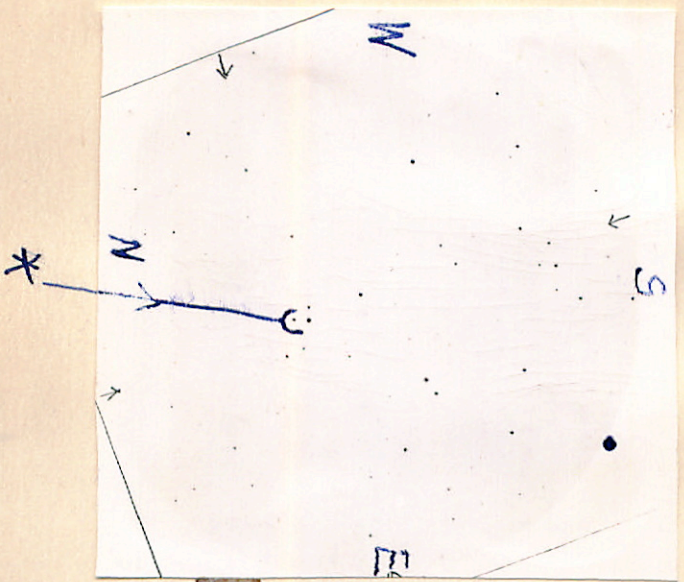
+



BD - 7° 36' 32" (1950) 13:27.7 - 8:18

11.9 pg





Note:  
This chart  
is 4X BD  
scale  
1mm = 45''

photographic maps

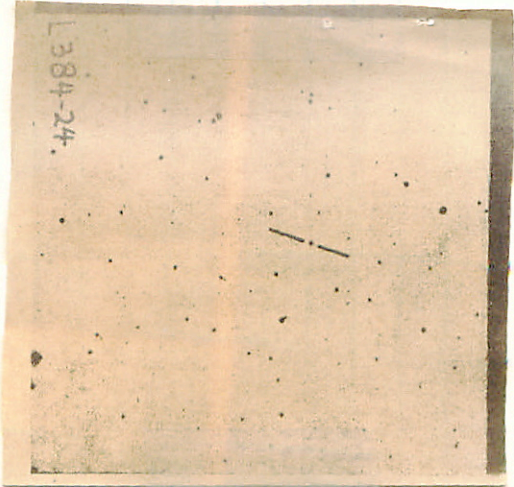
533      7      32.8      -42      49 ← (1971.0)      ?  
7      32.1      -42      47      13.9 DA

0.66 50

Chemical in Sp. f. 109 (Kuylen Sker #32)  
L.      384-24  
528



L384-24.



13 24.3 -51 33  
13 23.0 -51 26

15.0a 0.50 26.80

1604

1257-47

14.6.0 0.00 -0.79

Chart System  
Ap. J. 109 \* No. 46