

20

2189 2



→ 0 11 111 52 29

1353 105 3

66

16038/43
LDS3

0	08.2	52	52	12.9	220"
	8.4	-52	56	14.2	220 10.14

218-41

218-40

100

x

W



S

1 mm = 10''

N ↓

blue plate

100

E

L 577-72 AB

23 52 42 -33 24

L FF 1835/36

may be brighter

23 51.4 -33:34

52 42

→ brighter

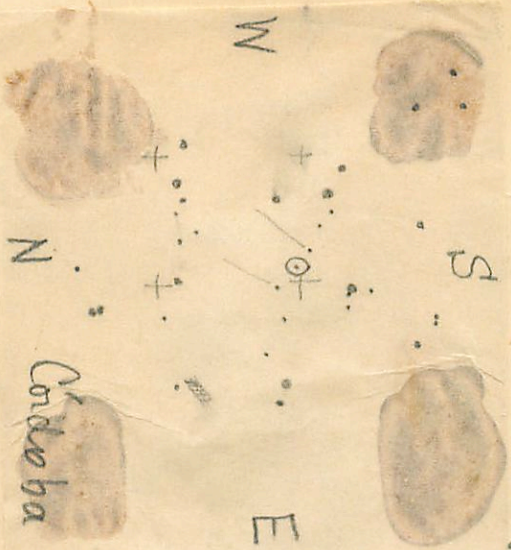
(1949)

A(50) 14.64 pg white
B(no) 14.84 pg red

7" 0°

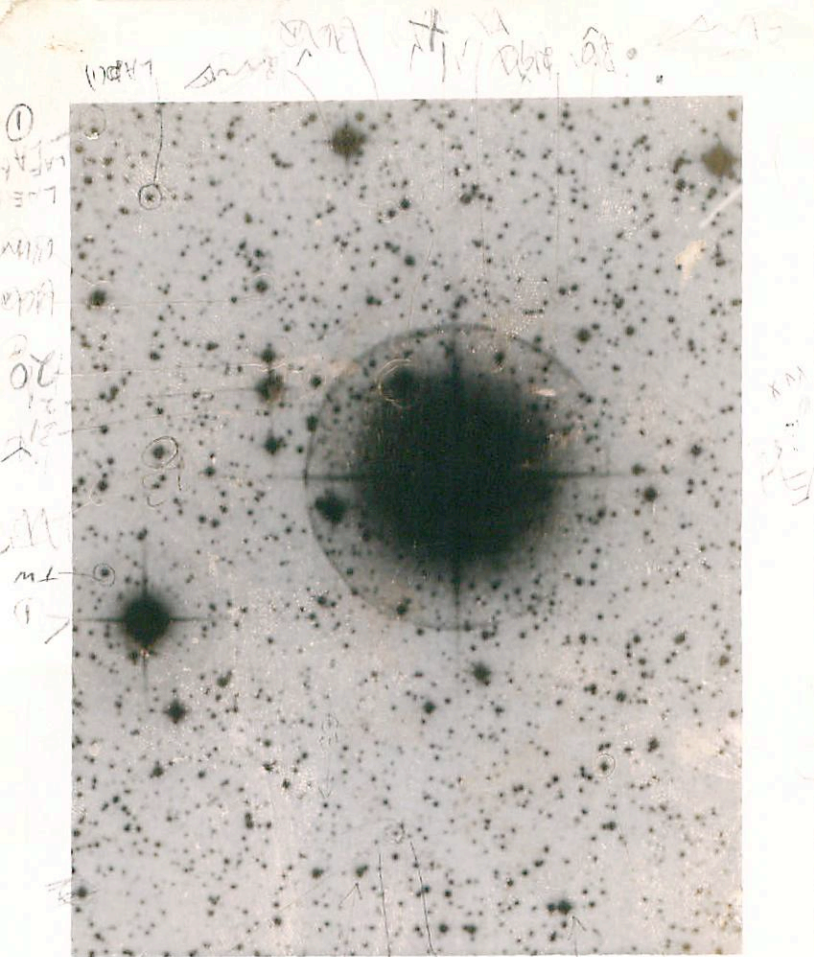
Both * please

B (the northern camp) is much brighter than A visually



POLAROID

1/20412A



103(2) 101(2) 102(2)
 18 52.8 + 36.50 1950
 → 53.2 + 36 51 1962 (MC)

① 5.60 - 15 - 63

(N)

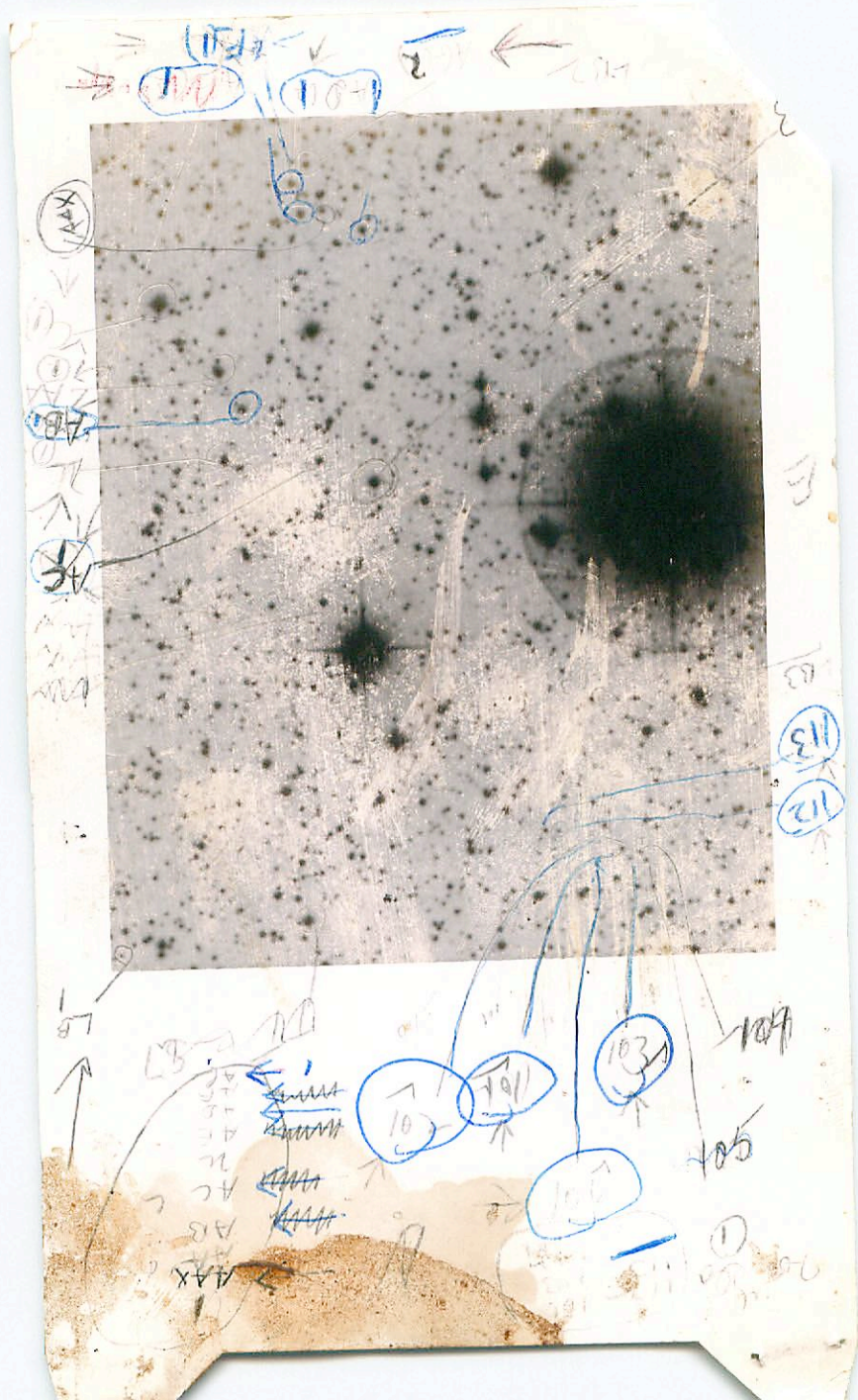
2

FOLIO 1010

F204125A

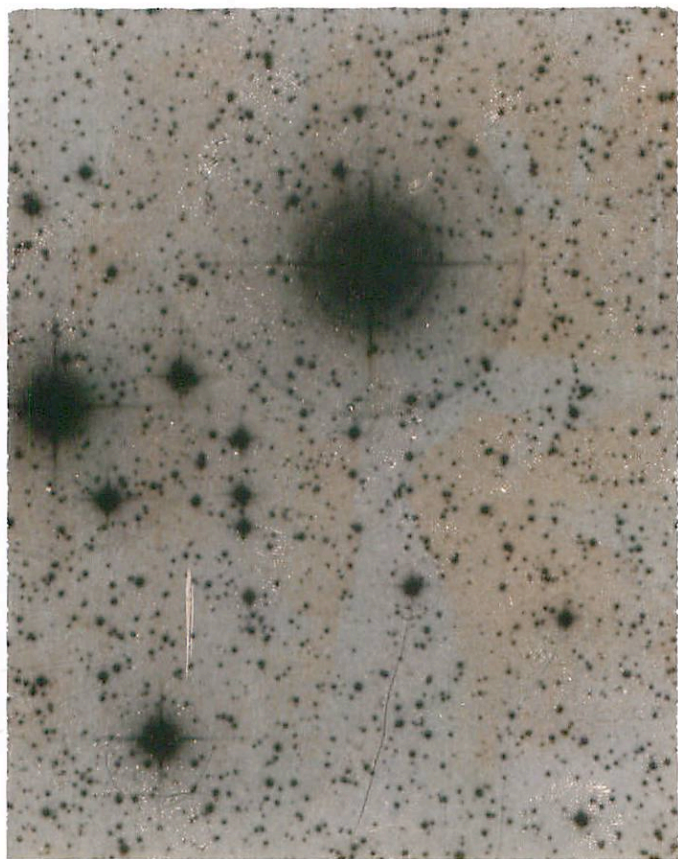
← 15 754 + 34 51
 53.2
 ← 18 52.8 + 34 50





PC141000

630012A

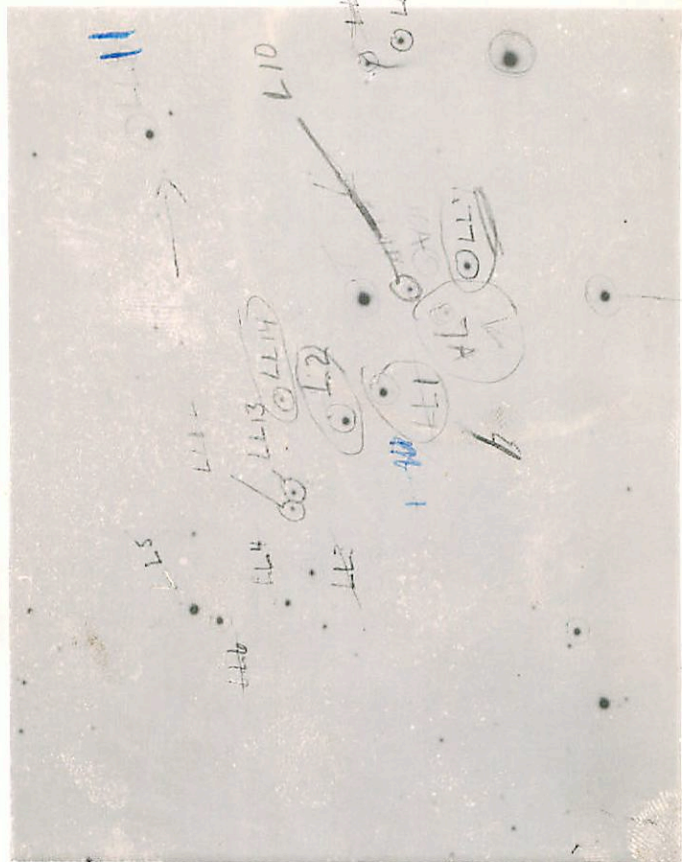


C. B. 19

35
36
15

POLAROID

040012A



LAC10

- ② 11
- ② 12
- ② 13
- ② 14
- ② 15
- ② 16
- ② 17
- ② 18
- ② 19
- ② 20
- ② 21
- ② 22
- ② 23
- ② 24
- ② 25
- ② 26
- ② 27
- ② 28
- ② 29
- ② 30
- ② 31
- ② 32
- ② 33
- ② 34
- ② 35
- ② 36
- ② 37
- ② 38
- ② 39
- ② 40
- ② 41
- ② 42
- ② 43
- ② 44
- ② 45
- ② 46
- ② 47
- ② 48
- ② 49
- ② 50
- ② 51
- ② 52
- ② 53
- ② 54
- ② 55
- ② 56
- ② 57
- ② 58
- ② 59
- ② 60
- ② 61
- ② 62
- ② 63
- ② 64
- ② 65
- ② 66
- ② 67
- ② 68
- ② 69
- ② 70
- ② 71
- ② 72
- ② 73
- ② 74
- ② 75
- ② 76
- ② 77
- ② 78
- ② 79
- ② 80
- ② 81
- ② 82
- ② 83
- ② 84
- ② 85
- ② 86
- ② 87
- ② 88
- ② 89
- ② 90
- ② 91
- ② 92
- ② 93
- ② 94
- ② 95
- ② 96
- ② 97
- ② 98
- ② 99
- ② 100

E



N

LTT 520

N

2 BOM 46836

See Pp. J. 153, 154

LTT 560

三



0021

POLAROID

0516L2A

(N)

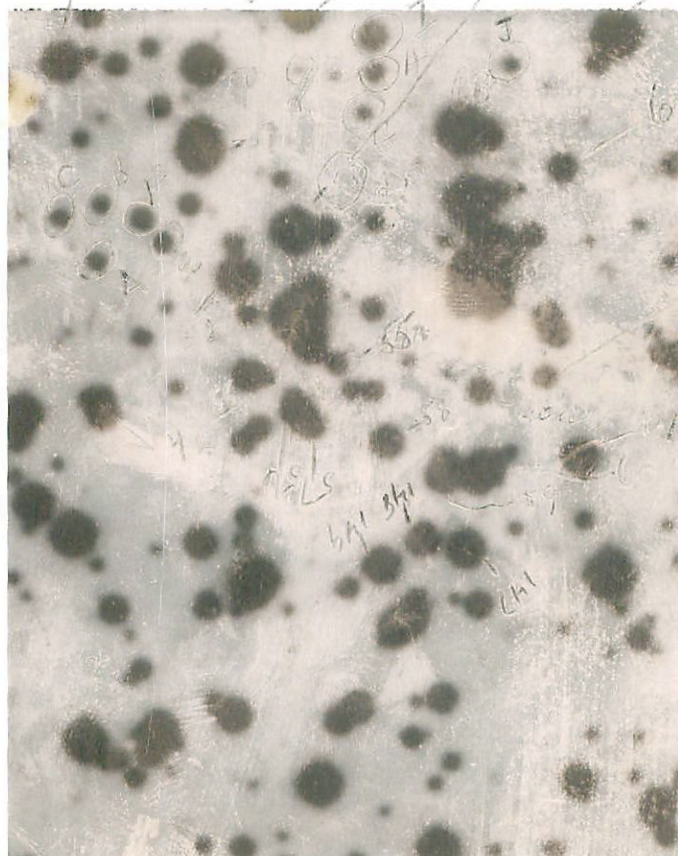
Van?

45

48

119

69



E

69a

2/69

SLS

M H

CHI

POLAROID

AG 150 05



9-28
8-3-8

08H