

M-32-M 7-15-41

13  
+ 29  
17.3  
23  
(1955)

Zwickly # 43

7

4-73

M





F 12696

POLAROID



W1346 20 32.3 +24 55 1855 1950

11.2 -0.2

WD

W1346 20 52.0 +74 27 1962

7965

W1346 20 38.0 +75 25 1962

7278

C-666-17/20

(20)

~~3637~~

~~38~~

14

39.05

+6 40.8

1950

39 37

38

1942

(17)

35 31

+5 30

1950

36 03

27

1942

John

22

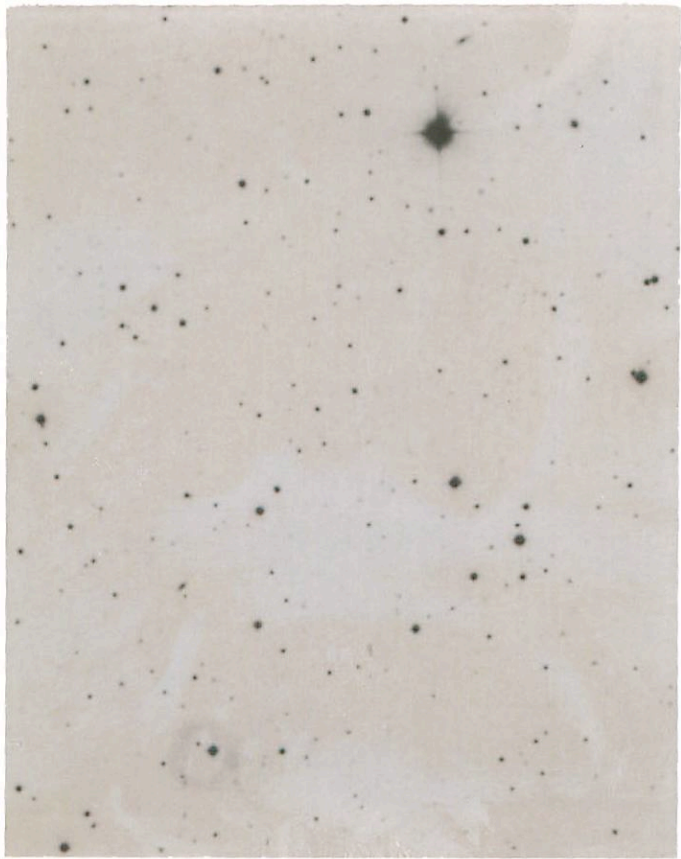
22

POLAROID

C22152



111



00-00

N

22

POLAROID

C 2 2 1 5 2

From

7

03  
05

54  
55

-06  
-07

58  
59

1950  
1951

8

20  
55

-07  
03.7

02.7  
03.7

1950  
1952

<sup>d</sup>

13.1 - 14.4 3.288

9 01

-07 03.0 0.0

24

XX

M

ER

N

24

XX Mon 6 47 12 -02 41.4 1900  
 49 42 -02 44.8 1950  
 50 12 -02 45.5 1960  
 50 16 -02 45.6 1962

12.2-13.3

5.45 July 50 29 -02 449

July 20 45 1950

E K 11.6-12.0 6 45 32 -02 17 1855  
 47 49 20.0 1900  
 390 50 19 23.4 1950  
 50 55 24.2 1962  
 51 03 -2 23.9 dial

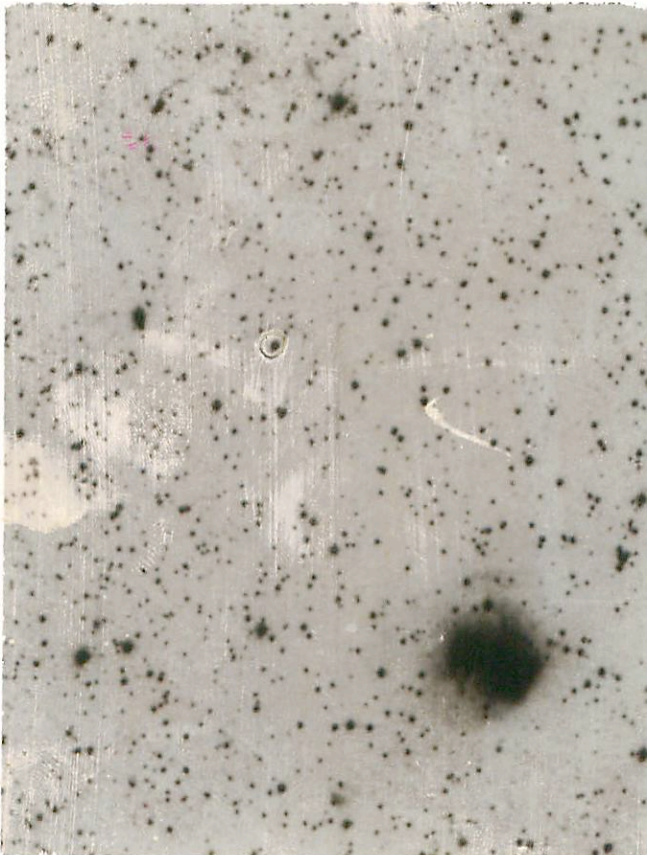
25

POLAROID

J111110



N



E

AC Mon

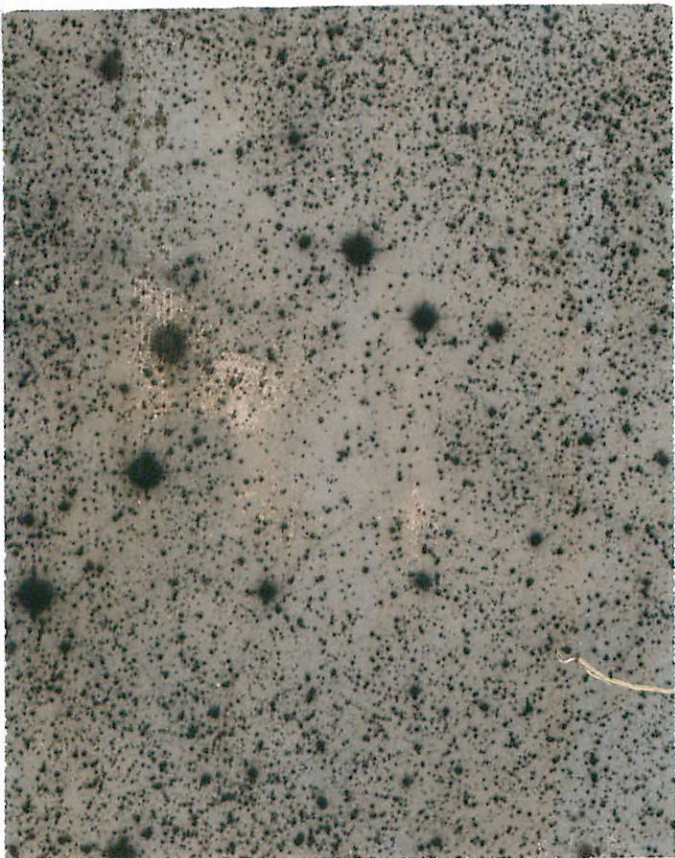


25

AC Mon 06 56 12 -08 33.9 1950  
06 58 36 -08 37.9 1950  
06 59 05 -08 38.7 1960  
06 59 11 -08 38.9 1942  
10.3 - 11.1  
8.82  
6 59 21 -8 38.3 death

26

2



W

1889

1889



26

VV 89      19      53      55      16      +32      25.4      1900

57      39      340      1962

149-163

6-2

4.92

G<sup>142</sup> 19 43.51  
~~G-148-50~~ 16 20.4 14.5-1

f grow 1967 22 24 04 -48 36

6.0 - 15.0 400.9 725-77 -52°

11509

5556

6550

5-45-8



Area

E. 9.

27

Scale .56" = 1 mm

59 m

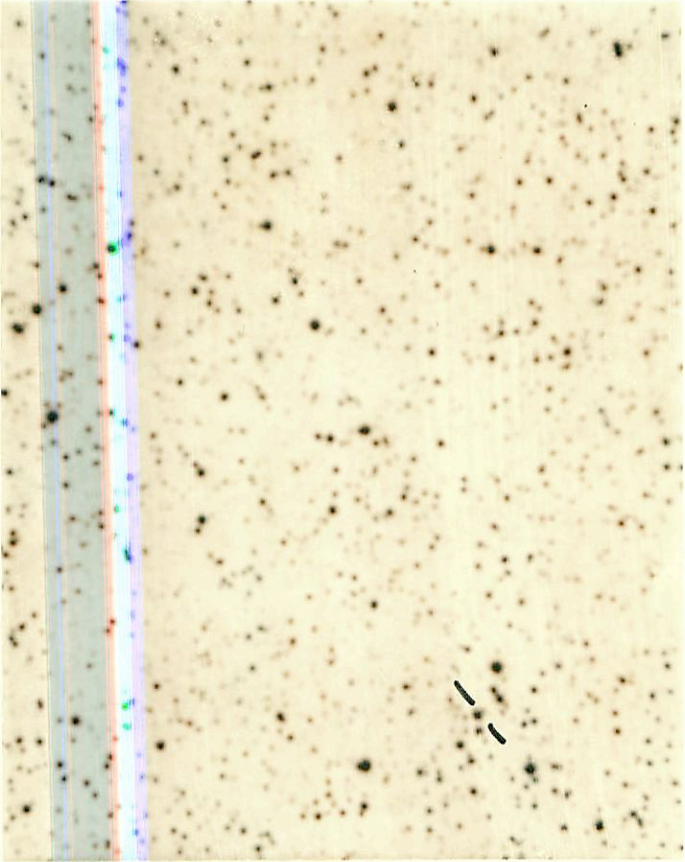


115

48-8  
PC

6511

DL



POLAROID

A315038

jr 150



S. Cal

Scale 56" = 1 mm

6<sup>th</sup>

Area — 64°

UNION OBS

N

S Co

1967: 10 08 18 -61 23

3 Dec 67

4.5 - 9.9

150d.

167-74

17 Dec

Box 29 Dec

13 2nd

14

~~Apr 1st~~  
~~2nd~~

(4)

27

28

29

Open NY 3 Dec 67

POLANDIA

A 815019



92-8  
92

94

POLAROID

A015010





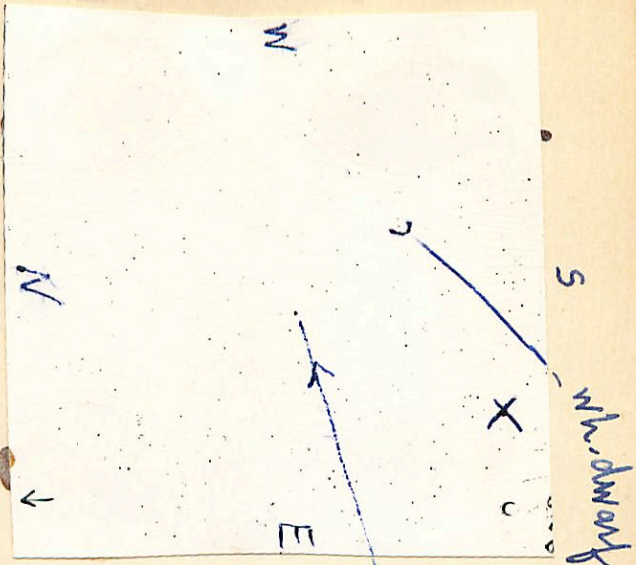
POLAROID

RECORD

54

20  
8-19





BD-14:4565  
6<sup>ms</sup>

This is 4x BD  
scale  
1mm = 45''

photogr. maps

L 845-70 V.T. 17 (1950) 17:08.5 - 14:45

14.3 pg  
14.1 pv

note  
orientation  
of chart II

1mm = 15" N

BD - 14:  
4565  
6<sup>m</sup>8

W

S

E

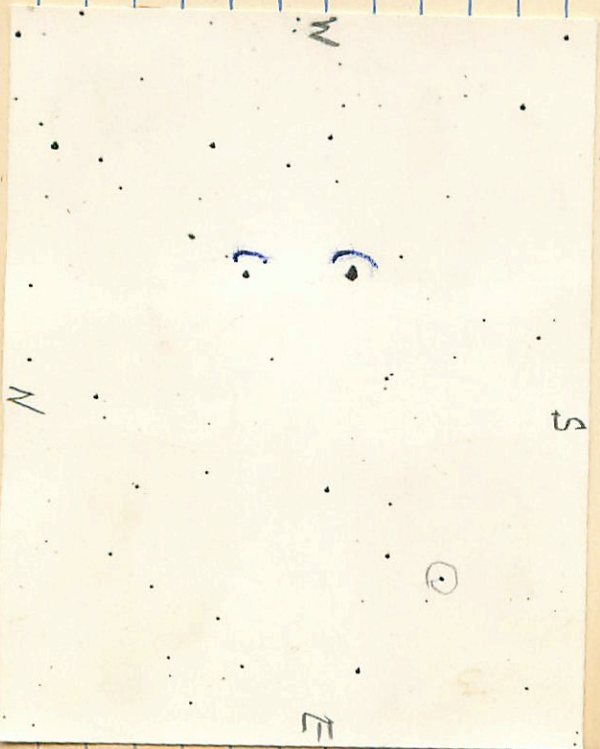


L 551-74

(1950) 15:20.1 - 34:01  
75 -47 + 17

14.7 pg

LF 76198



L1363-3

21:40.5 + 20:45 1955 13.3 1.66

E

↓

N



28

PLATE

100

21316-62 3E 16.36 0.52 16.60



1643 164103

28

1643      21 31.6 -62 38 14.3  $\times$  0.52

L164-103      1640

→ 21 33 06 -62 33  $\times$

FI Mon

7

03	44		53.8	1855
05	54	-06	58	1900
8	20	-07	02.7	1950
	55		03.7	1942

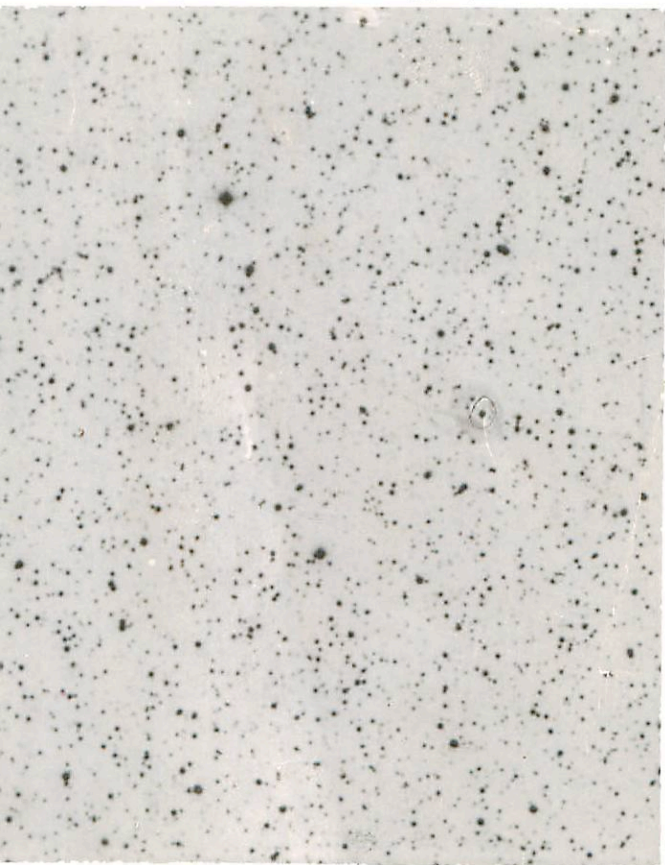
13.1 - 14.4 <sup>d</sup> 3.288

9 01

-07 03.0 11/16

DL 2

---  
Lone List



3



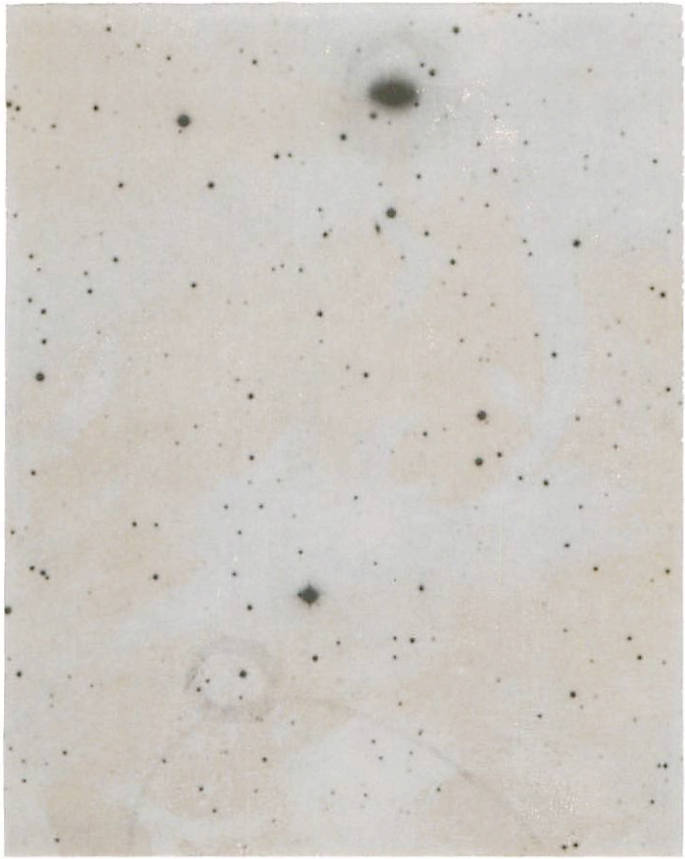
POLAROID

23

J11119



1000



1000-100

1



22

POLAROID

C22152

6511

554-61

W dr

July 20

~~16 18 05<sup>06</sup> -31 54.5~~ <sup>53.2</sup>

16 17.0 -31 52 15.5 f 0.23

16 22 41<sup>44</sup> -30 14.5<sup>13.3</sup>

6550

5-54-5

16 21.6 -30 12 14.6 g 0.32

~~17 May~~

Agari

More 14.74  
+86 + 15

27