

IY copy

19

50.00
51.42

+31

29.8

22.8 1855

Sam Wild
#17

14.1-15.7

—^d
21.760

53.39

37.6

54.02

39.2

07

39.5 1962

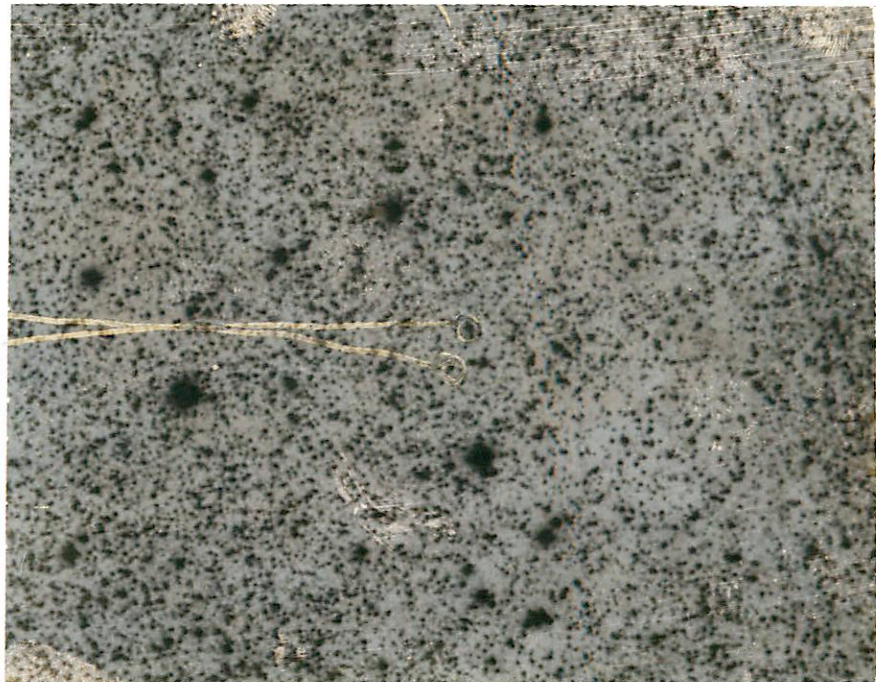
254199

New Man

8

1

1000 C. 1911



N

POLAROID

8

C 22152

HO1115

ix

5 Feb

1967 0013 42

-32 14

(✓)

6.1 - 13.6 366.2 173-178 -82°

1 sent

24

2 Oct

2 Oct

3 Nov

20 Feb

20 Sep

3 Oct

N

E

8

Scale $\approx 1' = 1\text{mm}$
Scale $\approx 1' = 1\text{mm}$

S Sci



①

u su 1967 01 10 00 - 30 17.5

8.3 - 15.1 334 MSE - 84°

12 Sept
2 Oct
3 ins
+

18 Sept
20
3 Oct

~~*~~

6

11

FE

1

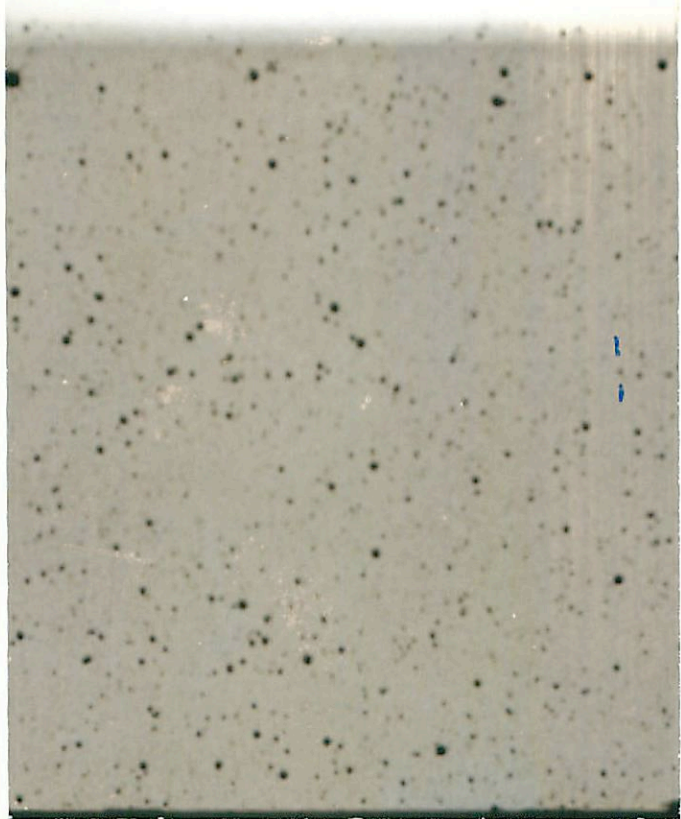
245-20 mold 359

2 2 4

POLAROID

2

J111119



X

21/5m

250x

55 June 8

8

49 42

+28

30.5

1450

6-47-9

50 25

~~29.8~~
27.8

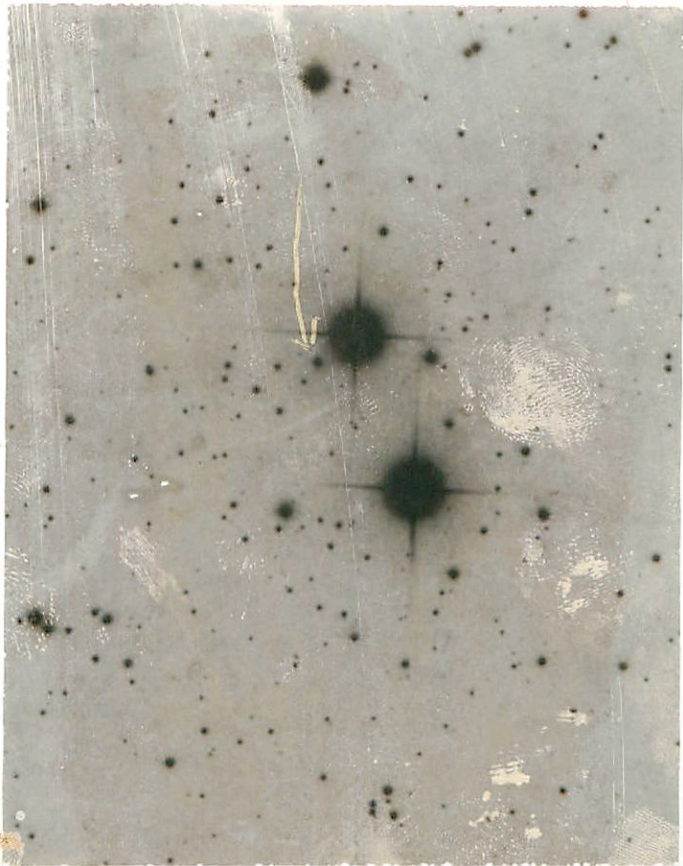
1442

544 } 85"
13

of 100" read

10

2000 11



EE

1 2 3 4

6 3

4

10

POLAROID

J11119



2-6

POLAROID

A615010

AOS 2644

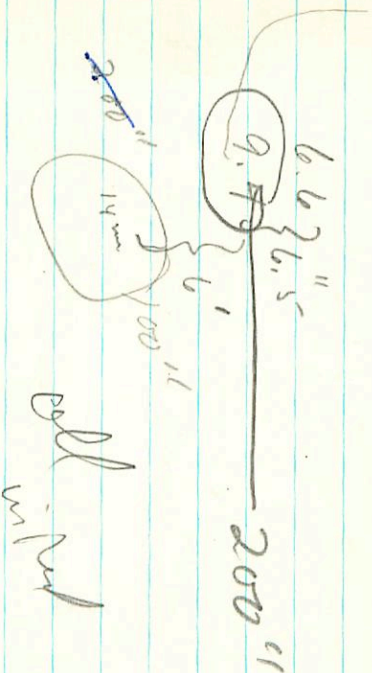
3

34.2 + 00 28.6

G-80-11

34.8

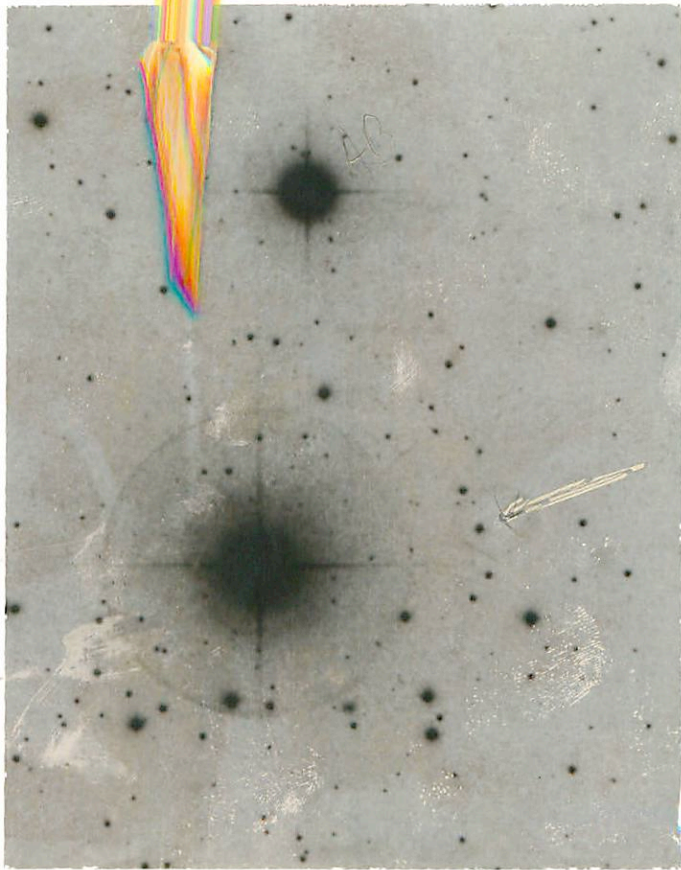
27,81942



11

Reference

A



E

2000-11



POLAROID

J11119

13.1-14.4
at
4.81

no. 7

Under Am 20
#5

~~Chub Cook~~

try again

48	23	54.9	1950
	58	59.6	1962
	58	55.7	1962

96
BB

EEMON

12

M 1 0 2 3 1

12

POLAROID

CN Ref

20 20 36 +13 07
18 29 00 1855

850.1935

22 57 16.4

14.2-14.6

23 25- 18.5

D.591

31 19 1942

AP

3 + CP*15

More early

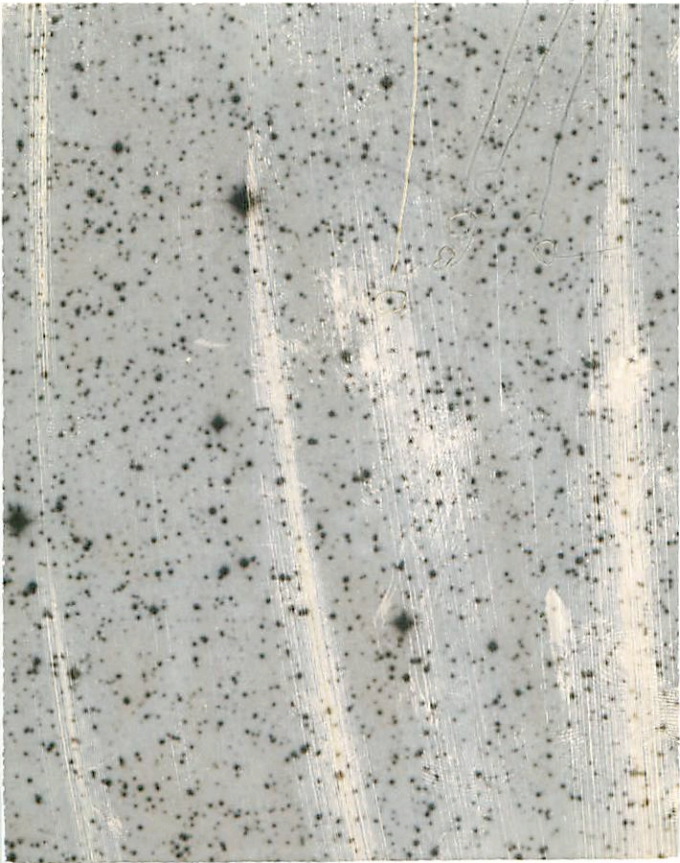
~~scribbles~~

←

13

Ball A on the 2nd and 3rd X's, respectively, in
nature

30A C.V. 100



C
E

front view of the part
N

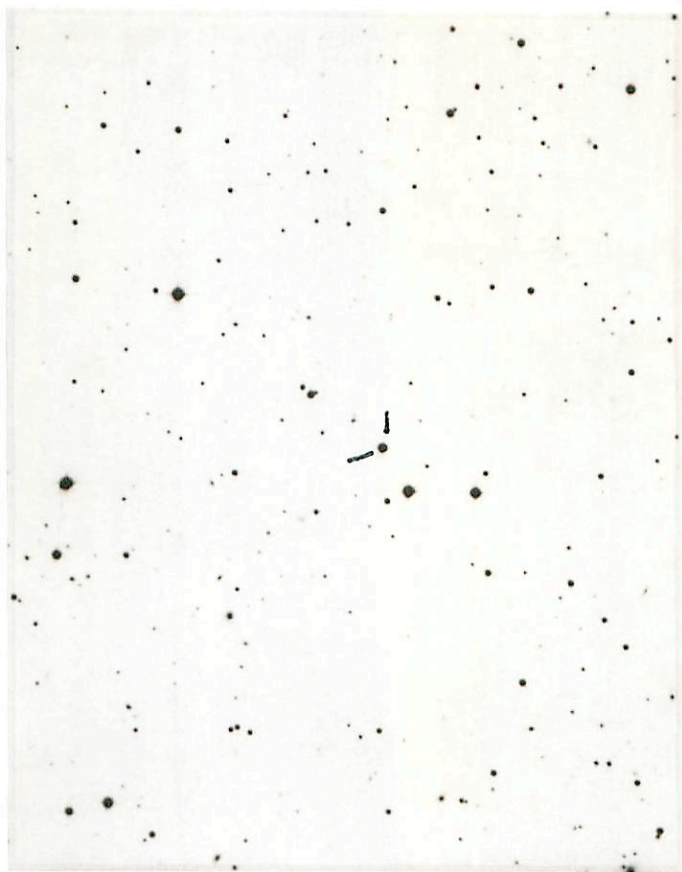


MV
100

POLAROID

13

C 22152



65

8-3

6474
~~6453~~ Red

74-208 ✓
626-41

(1279)

16 H 49
~~16-10-46~~

~~7004~~

-28 23.5

16 (246)
16 (246) - 28 27

16 284 - 28 27

150-~~150~~
17.2 8-0.50

H 2756

215.57



626-41 16:08.3 -28:15
13 m 9 0.5.0 232.0

PHL 459

23 16 54

-17 22 0

L791-10

= LTT 941 E

1411-0.02-087

ids

N



KG 6 CK 20

POLAROID

6-70-5

0

42

39

-5 00.6

43

16

100004.5

1942

↑ 100 03 ↓

A bus

B 14.3 + 4

(A)

~~Booth~~

B reef

14

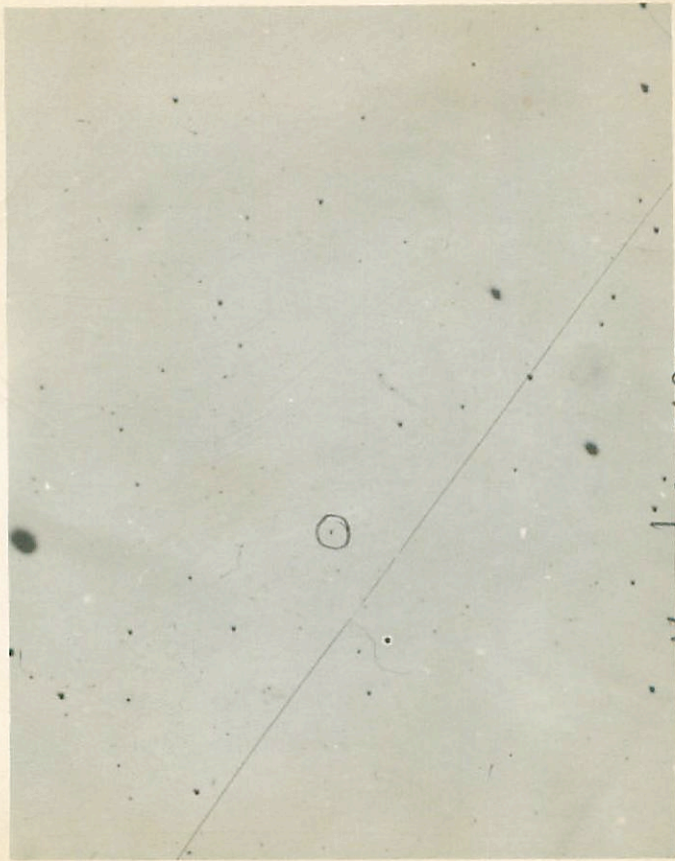
11
E

B-70-S



11

14



68-206
N

L-1046-18

12:14-3

+3:14

1950

N

W

E

True Blue

1 mm = 15''

L 879-14

4:35.4 - 8:53(50)





1-8

5

POLAROID

W015038

8-6

10





8-5

POLAROID

A015014

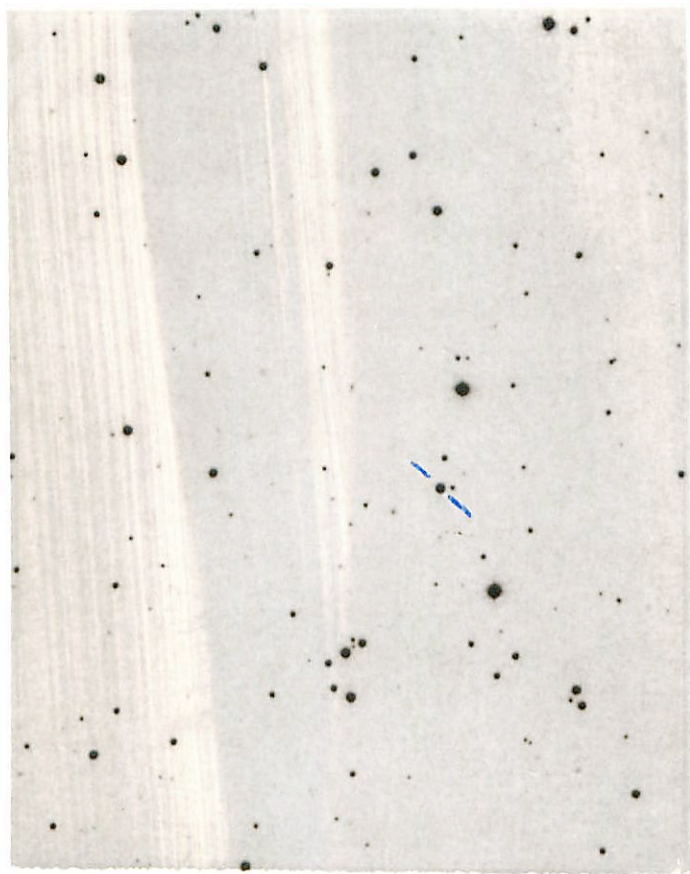


8-8

6

POLAROID

A915029



110
A



8-9

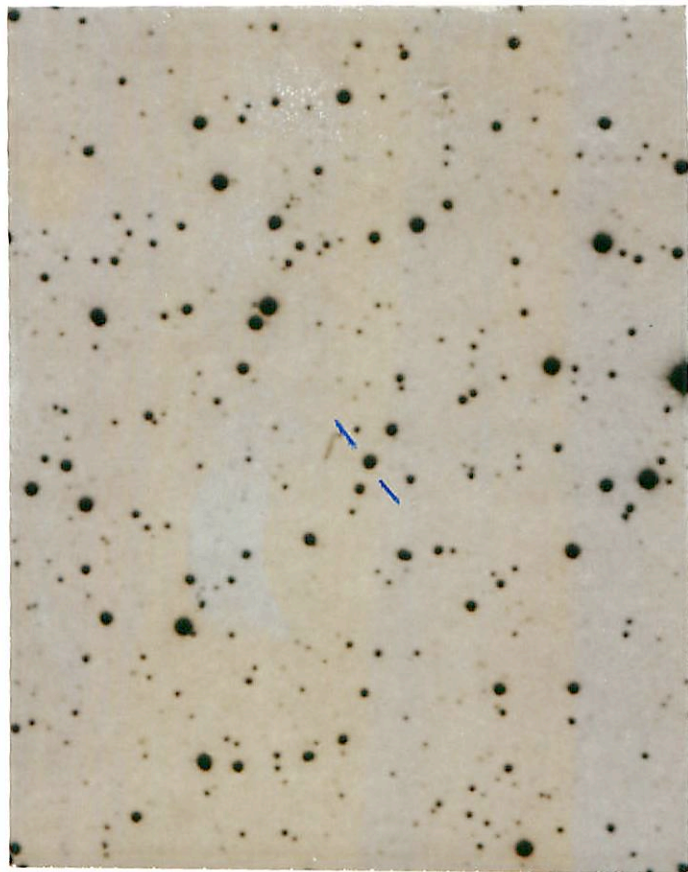
75

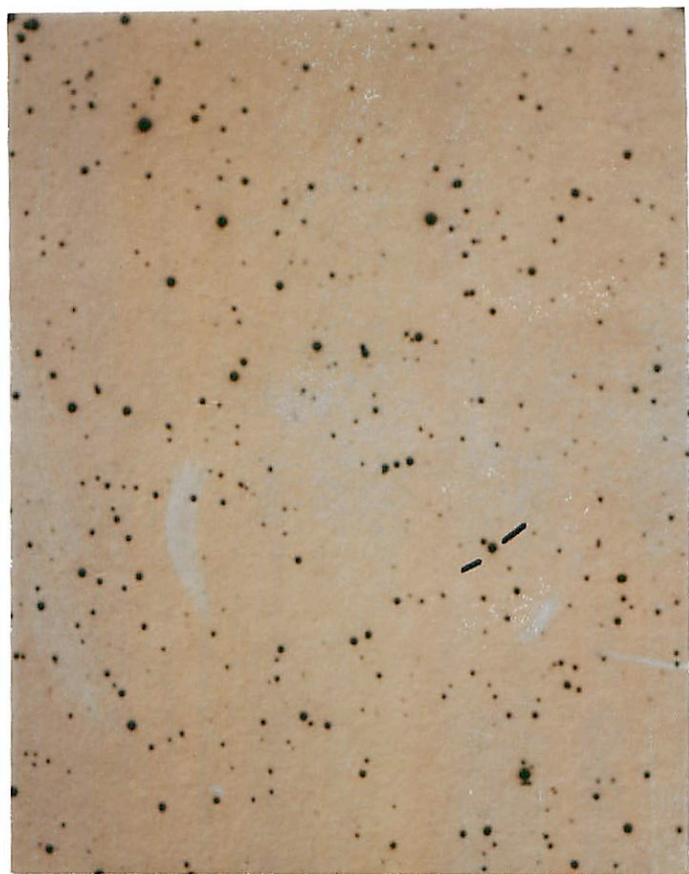
POLAROID

4315043

2535

8-11

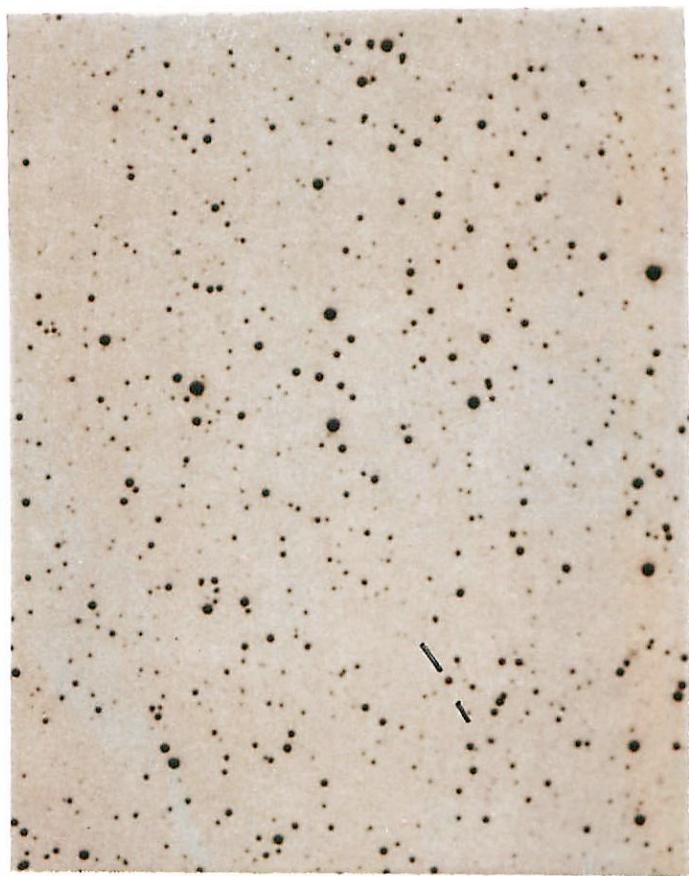




8-10

POLAROID

A915011



8-12

72

POLAROID

A. 219. 220

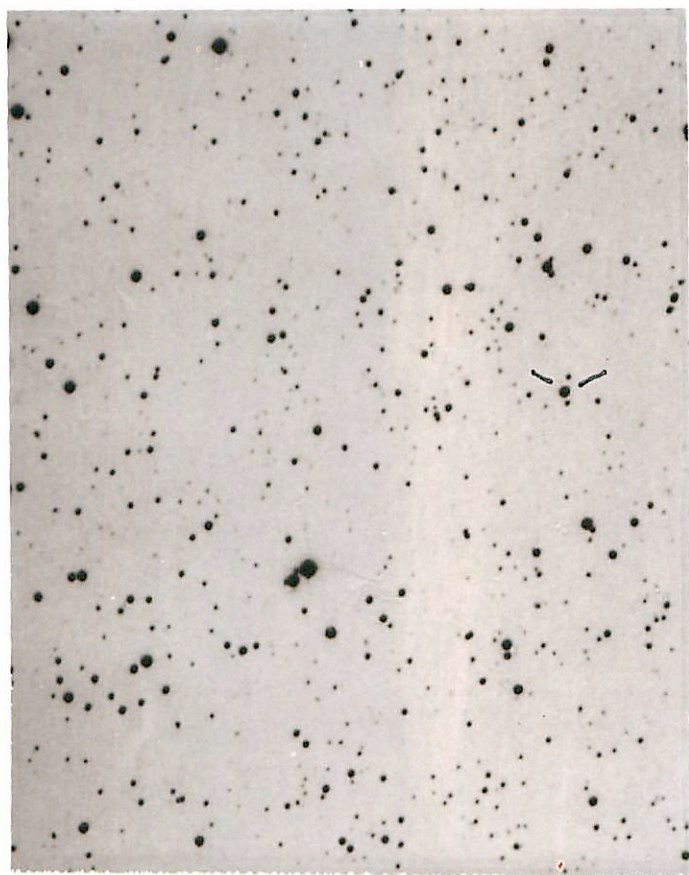


8-13

160

POLAROID

A810A20



41-8

3
~~scribbles~~



918

7

POLAROID

AB20020



818

POLAROID

A910A20

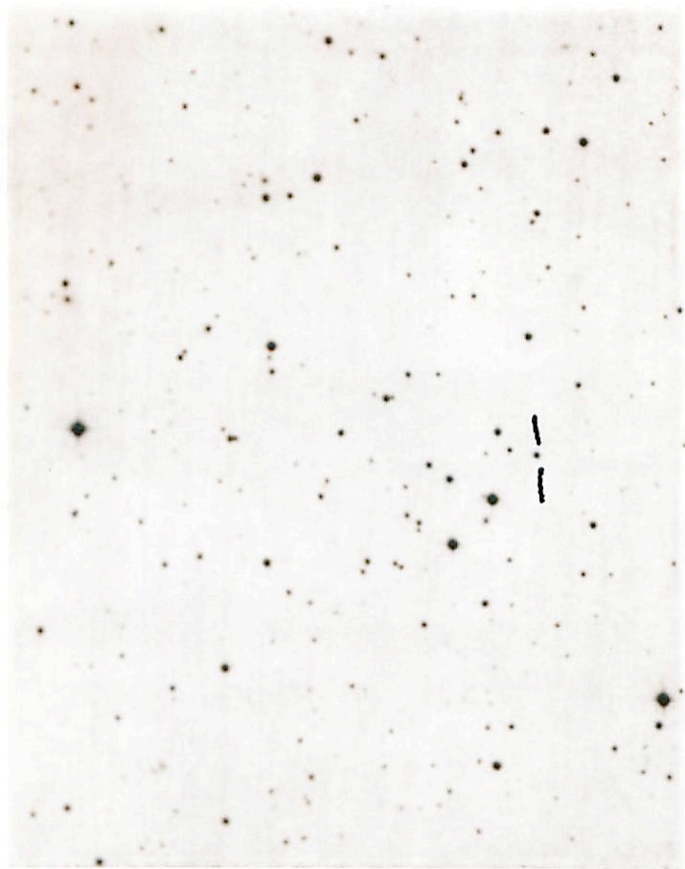


8-8
51

315

POLAROID

A.S.20.A.20



8-27

POLAROID

ABSCA.2C