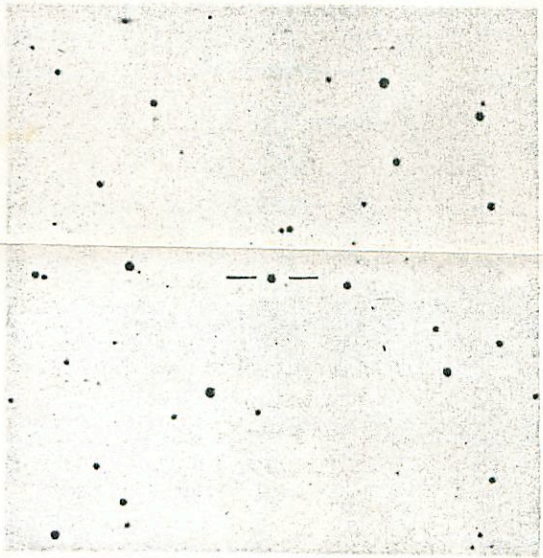


Geographic Society-Palomar Sky Survey; reproduced by permission.)
reproduced from the Palomar Sky Survey red print. (Copyright by National
Finding chart for the new flare star. The field is a 12' square,



E

N



8.57 +845-1515

820 + 34

3222

00 34 00

-63

413

7468

8.16 +0.335 26 Nov 76

8.25 +0.33 45 Sept 76

8.13 +0.33 25 Oct 76

8.22 +0.33 18 Dec 76

8.18 +0.29 27 " "

8.17 +0.30 29 " "

9.18 +0.32 3 Oct 77

8.28 +0.325 22 Nov 77

+0.305 14 Nov 77

9.16

+0.329

8.17

+0.31

14.00

8.16 +0.32 19 Aug 77

8.23 +0.324 8 Sept 77

8.12 +0.309 6 Nov 77

8.17 +0.333 7 Nov 77

8.20 +0.336 18 Nov 77

8.15 +0.327 5 Dec 77

8.14 +0.330 7 Dec 77

8.15 +0.346 8 " "

4317

257
420

30
35

55452

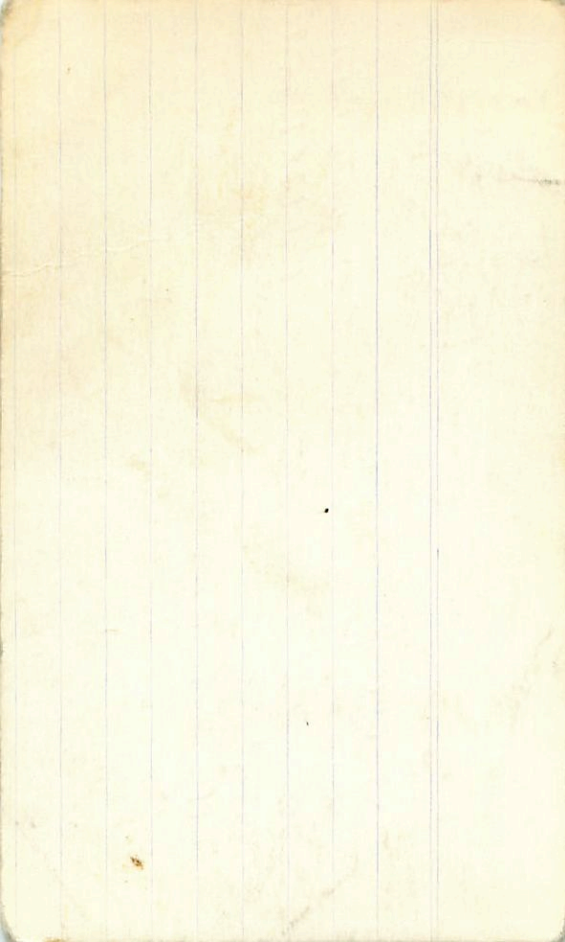
5020
36
428

4959
E3-15

47 36
6 47.6 -43 W/O 8.05

7.42 - 7.33 +0.085

7.53 -0.010	32 Dec 77	40" 0.110	-43 46
7.57 +0.01	13 Dec 76		
7.52 -0.115	8 Jan 77		
7.49 -0.045	12 Apr 77		
7.44 -0.035	30 Apr 77		
7.53 -0.004	2 Dec 77	40" 0.100	
7.57 +0.004	13 " "	36"	
7.52 -0.015	18 Jan 78	36"	
7.54 -0.024	19 " "		
7.53 -0.030	17/78		
7.58 -0.025	13 Nov 78		
7.48 -0.016	4 Nov 78		
7.46 -0.021	5 "		
7.47 -0.022	6 " "		
7.54 -0.010	9 Nov 78		
7.55 -0.020	12 " "		
7.52 -0.017	5 Dec 78		



-650 41 1 09 17 -67 33 1372

8.53 +1070 6/5/2025

8.54 +1068 5 " "

8.52 +1075 6 " "

8.52 +1079 7 " "

8.54 +1081 2/20/25

8.54 +1081 6/20/25

8.55 +1082 7 " "

8.54 +1081 8 " "

8.51 +1079 1/20/24

8.56 +1085 5/20/24

(30) 8.52 +1075

(23) 8.52 +1075

002984

12

49

27

-00

37

7.61

70655

960

410

254775

7.60 +0.63 @ 40" CT

7.55 +0.645 12675

7.58 +0.645 @ 26 Apr 75

7.57 +0.657 15775

7.64 +0.64 @ 30 Apr 75

7.56 +0.645 17775

+0.645 @ 17 Aug 75

CB

511088

40 6.68 +0.60

+203312 17 24 19.8 +2 09
45

6.72 +0.60 27 Jun 74
 6.67 +0.625 13 July 74
 6.64 +0.61 19 July 74
 6.66 +0.605 22 July 74
 6.70 +0.61 11 Aug 74
 6.70 +0.61 21 Aug 74
 6.69 +0.60 17 Sept 74
 6.69 +0.595 6 Sept 74
 6.66 +0.59 13 " " 74

6.71 +0.615 30 Aug 77
 6.71 +0.60 3 Aug 77
 6.67 +0.555 5 Aug 77 (5)
 6.76 +0.605 18 Aug 77
 6.72 +0.59 22 "
 6.79 +0.60 13 Aug 77
 6.70 +0.575 14 Aug 77
 6.73 +0.575 23 "
 6.70 +0.57 25 Aug 77

7629 01 15 27 -28 43 10.2 112 150

F203812

17

24 45

+02

09

6.68+276

$5.116 + 0.9 + 0.8 \text{ (MS)} = 32$ $5.27 - 0.045$

HR875

2

55

30

-3

5#

5.24 - 0.03 3 Jan 74

5.26 - 0.05 11 Aug 74

5.31 - 0.04 22 Feb 74

5.31 - 0.03 5 Dec 74

5.34 - 0.03 10 Dec 74

5.37 - 0.06 30 Dec 74

5.38 - 0.04 30 Dec 74

5.25 - 0.09 5 16 Dec 74

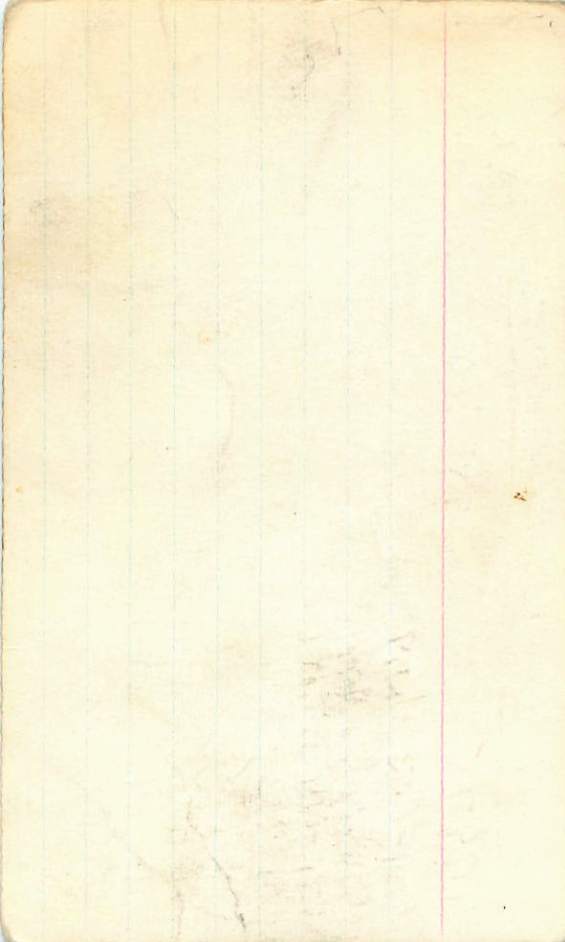
5.34 - 0.00 5 26 Nov 74

5.33 - 0.03 30 Nov 74

5.27 - 0.035 4 Sept 76

5.32 - 0.040 6 Dec 77

48



945
+1.35

Y1509

6 28 03 -2 47

9.50 +1.33 6 Dec 78 9.51 +1.357 47mm 79

9.48 +1.33 7 " "

9.49 +1.34 5 " "

9.49 +1.325 5 Jan 79

9.50 +1.340

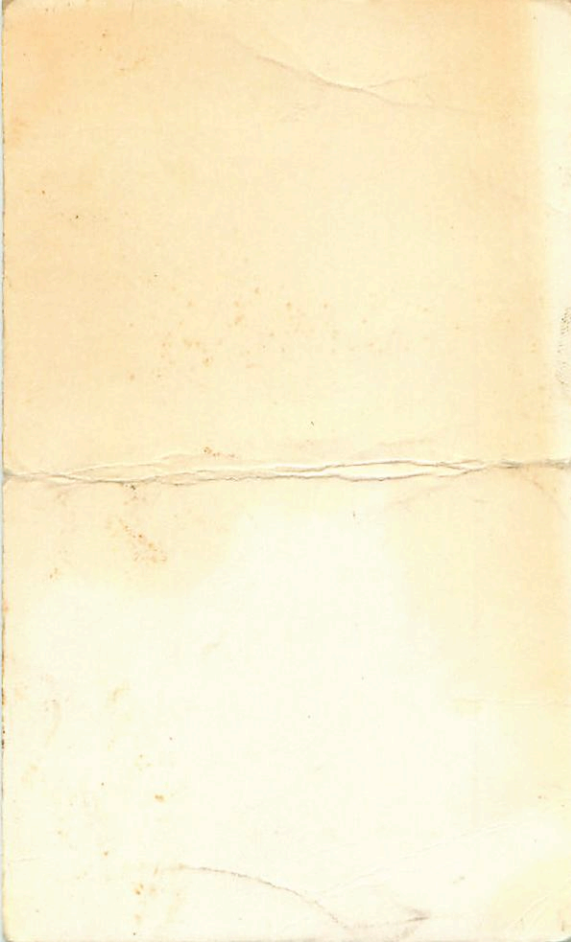
9.47 +1.351 20 Jan 79

9.48 +1.360 21 Jan 79

9.48 +1.362 20mm 79

9.45 +1.402 3 " "

✓	AGR 1983	19	10	50	+14	33	7.9	B9
✓	AGR 2021	19	23	20	+15	52	8.9	B5
✓	1930	19	11	35	+16	48	6.6	B9



7.80 +0.20

120559 13 50 15 -57 19

7.76 +0.265 12 Mar 77

7.64 +0.23 12 Apr 77

7.61 +0.22 30 Apr 77

7.70 +0.285 21 Jun 77

7.64 +0.23 5 Jul 77

7.76 +0.255 15 Jul 77

7.77 +0.24 22 " "

+0.22 12 Jul 77

7.67 +0.245 19 Jan 78

7.64 +0.235 12 Apr 78

7.66 +0.250 23 Mar 78

7.69 +0.239 15 May 78

7.91 +0.245 17 Mar 78

7.73 +0.247 4 Jul 79

7.76 +0.247 5 " "

7.72 +0.247 7 Mar 79

CO-34206

247

DD

35

39

-34

245

117 FD

W359

10

55

30

+7

13

1404
+1745

LFT 1293

16 29 55 -12 36

G-153-58

8.68 + 1.20

8.68 + 1.203 470079

H0267/5

-4302506

21 " 5.30 + 2.2
6.14 + 2.5

7 03 11 -43 34

5.04 + 0.28 3 May 77
5.01 + 0.214 6 Dec 77

6.58 + 0.285 18 April
6.49 + 0.275 13 Dec 76
6.51 + 0.275 12 May 77
6.48 + 0.245 12 Apr 77
~~6.485 20 Apr 77~~
6.48 + 0.235 30 Apr 77
6.45 + 0.245 3 May 77

40-250, SP

215

to

20

39

-24

425

123

Fom