

+150327  
14410

2 18 45 +16 05

73-8 -16-6  
8.54 +1.16 12

9.00	+55	1233	-438	2670075
9.02	+61	1238	-431	2570075
<u>9.01</u>	<u>+58</u>	<u>1236</u>	<u>-435</u>	

755

✓ 8.40 +0.471 -520075  
8.41 +1.434 200075  
8.40 -4.38

+160277  
144260

02 19 00 +17 32 9.32 + 8265

+100 -12 +240:

(11111111)

5 184

9.30 -250 1078 -447 136878

9.30 -235 1022 -483 256878

9.28 -248 1033 -454 266878

9.29 -243 1025 -460 (3)

11.9  
2.28 (11.24)  
4.49  
3.04

8.94 +124452005  
8.55 +12437005  
8.97 40294

8.72 9997 1423

4894 -0252 +0021  
+0.65  
0170 3.95

+1337  
14438

+20-15 -1.9

02 19 00 +14 12 703+108120

(+) 802 +23 1290 -474 170.574  
8.07 +30 1257 ~~454~~ 136.825  
8.02 +28 1264 -435 25.4878  
8.07 +21 1294 445 18.6249  
8.02 +22 1292 -482 (2)

(187)

2.44 +416 19.4652

2.44 +0.411 7.2855  
2.44 0.411 (2)

+150329

14596

02

20

35

+16 04

7.92 + 93 180

⊕ 2764

145

145

1056

-443

170884

7.88 + 1185 + 7.42

2.93

-41

1096

-441

130ent 75

253

-43

1090

~~4824~~

255ent 78

792

-45

1113

-484

180ent 9

793

-43

1094

-496

ⓐ

2.83

-43

1094

-496

ⓑ

2.83 + 10418 78ent 8

79.44 + 10.42 + 24 cent 72

941 + 10.425 23 72

792 10420 ⓑ

-1349 Super

14596

2

20

20

+16

40

792

140

7.89

7.86

7.88

+1.09

+1.08

+1.085

+0.74

+0.74

+0.74

+2.16

+2.16

+2.16

247

241

242

2400

240

240

-10.42

+10.42

-10.42

247

241

242

2400

240

240

-10.42

+10.42

-10.42

+43.9 Augh

14689 2 20 550 +18 8 8.83 NO

7.86 +0.52 -0.59 21 cent 22  
8.79 +0.50 -0.67 29 cent 22  
8.82 +0.91

8.45 +0.31 5 24 cent  
8.44 +0.32 30 cent 22  
8.44 +0.32

+170353  
17697

02 21 25

+18

15.5

8.93 +0.79

+265 +81

+18.9

8.82 -187 1157 -464 2 Jan 81

8.83 -452 1132 -472 13 Oct 75

8.83 -178 1152 -440 25 Dec 75

9.84 -185 1146 -468 17 Oct 74

8.83 -180 1152 -482 18 Oct 74

8.83 -182 1152 -473 (4)

8.42 +0.317 19 Dec 72

8.41 +0.316 7 Dec 75

8.42 +0.316

326

8.44 319 @ 72  
8.43 322 (4)

~~185~~

35

9.41 +0.316 2 Dec 75

9.45 +0.315 30 Oct 72

9.44 +0.32 30 Oct 72

9.43 +0.318 (3)

14995  
+13035

02 24 05

+ 14 23

8.88 +105.82

+18 04 50 +15.5

(X)

986 +40

1176

449

2 Jan 50 600

986 +52

1182

445

13 Oct 75

986 +30

1223

510

14 Jun 78 812

986 +95

1190

1.812

20 Nov 83

986 +58

1151

1.812

16 Oct 84

986 +41

1151

1.812

18 Oct 84 8.24 - 11442 = 52075

986 +43

1190

490

⑦

8.25 + 433 = 2075

986 +44

1190

494

⑧

8.25 + 433 = 2075

986 +44

1190

494

⑨

8.25 + 433 = 2075



+16.290.

+24 +9 +29.1

15041

2

24

35

+17

33

9.25 +110 120

(X)  
(X)  
(X)  
(X)

9.28 +2 1204 -460 2 Jan 81

9.30 +4 1179 -430 13 Jan 75

9.28 -5 1188 -395 14 Jan 75

9.28 +4 1204 -438 ~~15 Jan 75~~

9.27 +4 1204 -486 15 Jan 75

9.25 +2 1205 -475 (4) 8.23 +403 77 Jan 75

8.95 +326 57 Jan 75

8.84  
+0.480

+140523

+3-21-870

14361

03 06 05

+15 07

2.54+144

1022

Agam

03

801+220

1359-444

2820-5

807+219

1349-276

2184+75

809+214

1365-420

22

803

1357-432

3

7.23 10.543-4205

7.24 11.531-5

7.24 10.540-40.540

-13 +17 #49.6

714514

19390 9.74 ✓ 3 06 20 +15 25 9.65 +104682

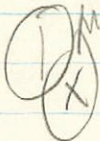
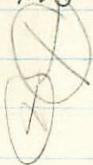
9.73 -27 1066 -427 9.20 +10 210.80 10000.9

9.74 +555 1065 -458 2,284 25

9.74 -36 1071 -367 14 Dec 78 40"

9.76 -16 1052 -429 2 Dec 83 61"

9.75 -29 1065 -427 (5)



644

453

345

✓ 9.17 #0402 42005  
✓ 9.20 + 401.5  
9.18 ✓ 40402

+150436

19409 ✓

9.40

9.45

9.38

9.40

+2

+11

+6

+8

1223

(1172)

1214

1218

-480

(-413)

-423

-476

210870

225425

242005

10PNO 0.9

100

+3-22 -1.8:

+1.5 59.5

9.41100

9.82 + 0.403 42005

✓ 8.84 = 397 5 "

8.83 + 40.400

(R)

+12040

19455

03

07

10

+13

29

860418610

+12-13 +35.2

8.87 1214 1341 -456 205.75  
 8.87 1217 1353 -469 242.50  
8.87 1210 1347 -462

8.09 +0.59 1.55

8.08 +6.54 1.46

8.04 +5.33 1.37

8.06 +7.53 1.47

f120443

+25.2

19495      3      6      42      +13      26      8.9 110

-7  
+18

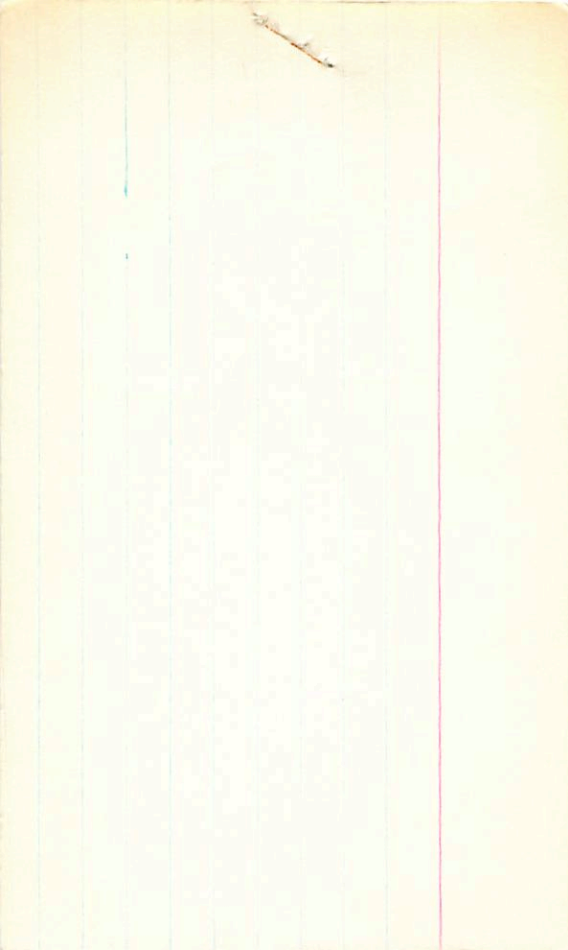
8.75 +1525 +1.60 1MS  
 8.79 +1.47 +1.595  
 + " - 30  
 -0015 -0425

600 -046

8.09 +0.59 1MS  
 8.4 +0.59 ①  
 771  
 79  
 6.92  
 2.4  
 9.4  
 -2.5

-1.5

+604 -048 Y  
 -4 +4  
 0 -044



160396

-2 -49 +12.5

14593

03 08 25 +17 11 7.74 + 1.45 - 12.2

7.79 +1218  
 7.74 +1214  
7.76 +1217

1188 - 448 225175  
 1487 - 439 26 "  
1488 - 443 (2)

6.95 + 0.635 1 star

186 ✓ ✓

548 6.87 +0.548 262278  
 +500 6.88 +0.500 21 " 1212  
559 6.88 +559



16 - 82 - 78.7

15085

15609 3 08 90 05 514 05 36 8.51 + 55.8 8.55 + 15.5 112

8.59 + 290 1761 - 503 228976  
8.53 + 290 052 + 65.8

8.56 + 285 1475 - 525 242077  
8.56 + 285 1469 - 519

1023 196 276 1000

1001

logs

7.66 + 0.63 246072  
7.66 + 0.61 206072

7.66  
~~7.66~~

7.67 + 0.587 420075

7.67 + 0.618 (4) 21904 7.67 + 672 5 "

7.67 + 0.588 40.588 + 0.

-88.74

19609

3

08 00

+15

84 8.55 12

8.52

+1.585

+1.82

216072

2.21

~~+0.665~~

~~216072~~

8.51

+1.585

+1.78

256072

7.66

+0.63

216072

8.52

+1.585

+1.80

7.66

+0.61

306072

7.66

+0.62

4130515

+780

19619

3 08 16 +13 35 8.58 105

$\frac{0.1}{\text{var}}$

$\frac{4}{3}$  7.14 + 0.99 ③

8.45 + 1.80

+ 2.14

~~6.94 + 0.95~~ 105

7.14 + 99

~~6.94 6.58 79~~

10235 + 011

10235 + 0105

$\frac{10235 + 0105}{10235 + 0108}$

~~5.25 6.20 5.05 8.58~~

10235 + 011

90

$\frac{10235}{10235} - 1 + 1$

~~6.24 6.49 6.74 5.25~~

44

~~5.10 6.10 6.10~~

19619.000\*

3.000\*

8.000\*

13.000\*

35.000\*

0.025\*

0.008\*

9.350\*

741.310

78.300

86  
525

895  
617

0.076

0.778

+101 +108

117.630

-0.052

0.181

-13 -18

-24.133

0.000

0.000

14

~~1600~~

+78.3

Supper

19619 3 08 86

+13 86 8.58 MS

+1.795

7.11 +0.99 30cent 72

8.53 +1.80 +2.055 21cent 72

8.44 +1.80 +2.165 29cent 72

7.15 +1.00 22cent 72

8.50 +1.75 +2.22 24cent 72

7.15 +0.965 24cent 72

8.52 +1.82 +2.14 20cent 72

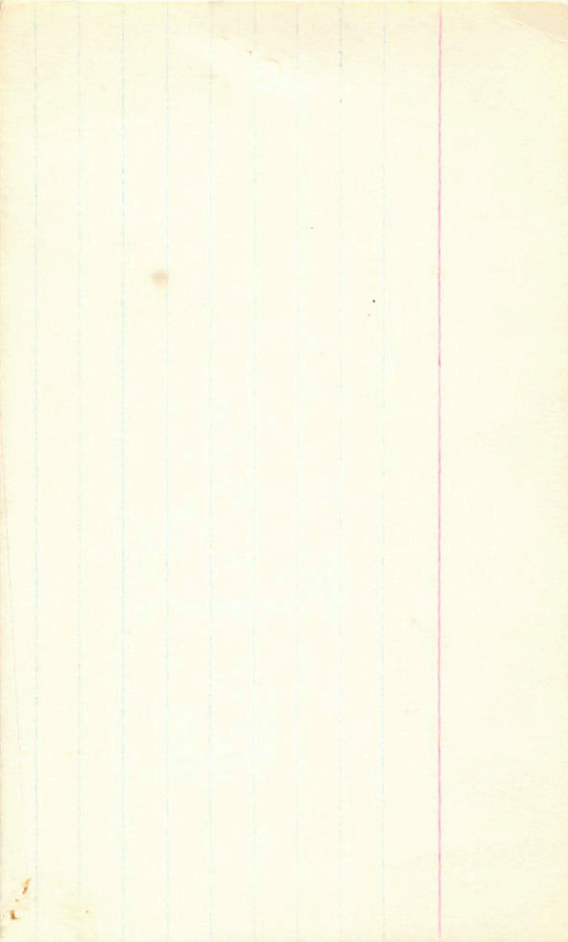
7.14 +0.95

8.50 +1.80 2.14

8.46 +1.795 +2.21 27cent 72

8.46 +1.795 +2.32 4 cent 72

90



+16° 396

19583

6037B

+9  
+17

NO

3 0 8 00

+17 09

7.7 182 +12.8

7.71 +1.56 +1.785 15

6.95 +0.605 15

-0004 -048 66+

+20  
02+

~~687~~  
~~643~~

-00045 -0460

h 900  
+  
0004

~~5124~~  
~~244~~

-006 -054 y  
+  
h 900  
3

~~023~~

$$\begin{array}{r} 51.79 \text{ m.s.} \\ + 5 \\ \hline 51.798 \end{array}$$

$$\begin{array}{r} 15.080 \\ 33.704 \\ + 8 \\ \hline 48.792 \\ + 2 \\ \hline 48.790 \end{array}$$

$$\begin{array}{r} 48.790 \\ - .777 \\ \hline 48.013 \end{array}$$

$$\begin{array}{r} 51.756 \\ + 5 \\ \hline 51.761 \end{array}$$

$$\begin{array}{r} 51.757 \\ + 0.12 \\ \hline 51.877 \end{array}$$

$$\begin{array}{r} -0002 \\ -0006 \end{array}$$

$$\begin{array}{r} -052 \pm 4.7 \\ -044 \\ \hline 17.97 \end{array} \quad 1404.1$$

$$\begin{array}{r} 2.39 \\ 20.36 \end{array}$$

$$1.47$$

$$17.78$$

$$192.5$$

$$-1.8$$

$$19.07$$

$$-1.0$$

$$18.47$$

$$18.65$$

$$+ 1.36 \\ \hline 18.65$$

$$1437.50$$

$$(37.40)$$

$$(18.88)$$

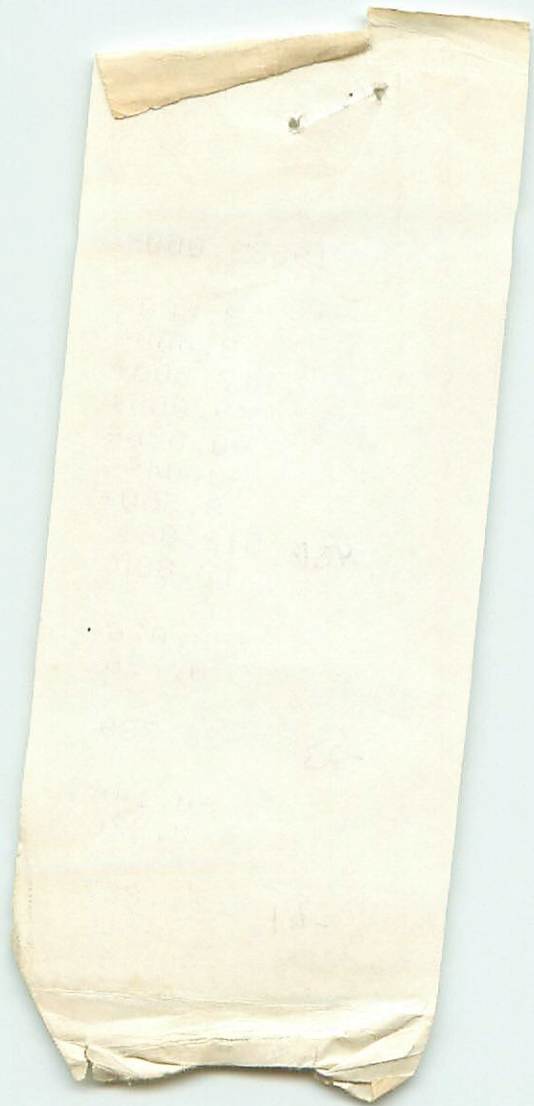
$$-14.8$$

$$94$$

$$40.0$$

$$\begin{array}{r} 19.03 \quad 1534.7 \\ -05 \\ \hline 18.98 \end{array}$$





19583.000\*

3.000\*

8.000\*

17.000\*

9.000\*

-0.006\*

-0.049\*

8.550\*

436 512.861

12.800

-0.076

0.796

-23 -28.789

-0.146

0.226

-61 -71.887

-0.166

-0.561

+15-0443  
19758

03 10 05 4 +15 38

-15 -12 +10.7

9.21 +1.2142

9.21 +55 1012 -479 26.20078

9.27 +61 1198 -434 22.5478

9.19 +66 1192 -442 24.20078

9.22 +68 ~~1193~~ -450 (3)  
1200

✓ 8.57 +433 4.20078

✓ 8.60 +433 5.20078

8.58 +0.483

+130521  
19884

03 11 00 +13 57.5

+25 -7 +30.5  
5.50 + 1.56 122

7.81 <sup>+309</sup> ~~#54~~ 1393 -498 14 Jan 78

7.87 #0.630 4 Jan 78  
✓ 7.88 #0.626 5 "  
7.88  
~~7.88~~  
+0.628

+397 duph

20305 3 14 86 +13 46 8.51 N2

8.52 +1.615 51914

8.48  
8.48  
+1.61

1171 2160722  
+1.66 2940722  
+1.685

7.53  
7.56  
7.54

10.71 2260722  
+0.69 2460722  
+0.70

+130 530

3

15

+13

46

+34.7

20305

+055-004

+007-006

+008-009

John

+34.7 Griffin

+006-002 Y

8.71 + 1.71 + 8.4.8

7.5.4 + 0.70 (2)

6.94 50

6.50

5.85

2

586

5.85  
5.85  
5.85  
2.40

4275  
371.54  
414 39

20305.000\*

3.000\*  
15.000\*  
13.000\*  
46.000\*  
0.008\*  
-0.009\*  
7.850\*  
371.535  
39.700

8.105  
414

0.007  
0.795

135

34.169  
-0.056  
0.164

-16.8

-14.411  
-0.006  
-0.584

26

-25.5

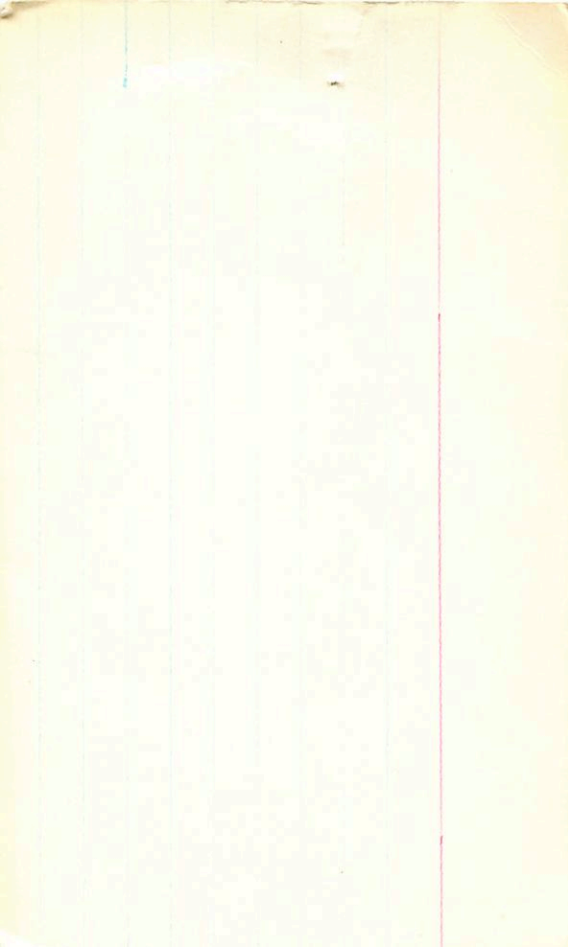


+130519  
16697  
08.0 +14 10  
3 09 05 +14 14 8.89 12  
+18.0

5  
+10  
8.82 +17.5 +18.5  
145  
7.52 +0.725  
145

NO  
+10 +8  
-00057 -0375 36  
-00044 -0267  
-00052 -0287  
-00052 -0322  
9.36 52  
6.6  
2.1  
9.9  
6.27 44  
2.12 44







19697.000\*

3.000\*

8.000\*

14.000\*

10.000\*

-0.007\*

-0.032\*

9.900\*

954.993

18.000

-0.064

0.782

-641

-46.904

-0.087

0.189

-110

-79.792

-0.112

-0.595

8.4  
479

(A) ✓ ✓ ✓ ✓  
20329 3

420 142 477  
35<sup>30</sup>  
15 30

8.75 10.66 +0.11 (1)  
8.60 10.24 (2)

+15 34.5

84 410  
8.76 281 911 -423 19 June 82

8.76 291 927 -438 7 June 76

8.74 -288 920 -424 24 " "

8.74 -288 (954 -47) 25 " "

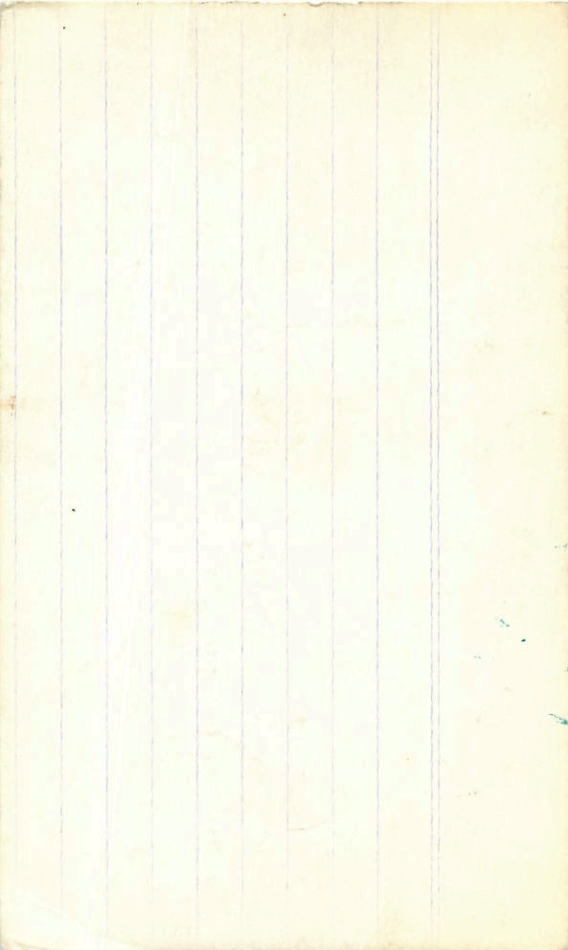
8.23 (302) 927 -447 9 June 77

8.75 290 927 -433 (4)

8.57 10.234 13 June 83

~~8.74 417 202 465 1461 (4)~~

(X) (X)  
I + R



+150469 03 19 05 +14 21 +114 +114 +114  
 +77-13 +17-9

✓ (+) 9.32 -5 1138 -443 14 Jun 76  
 9.30 +4 ~~1128~~ ~~430~~ 13 Sep 79  
 9.29 +14 1190 -491 18 Oct 79  
 9.27 +21 1143 -452 15 Oct 79  
 9.26 -12 1140 -447 14

✓ 1142 +1277 James  
 ✓ 8.72 +0.405 at -11.8  
 ✓ 8.74 +3.99 5  
 ✓ 8.73  
 ✓ 8.78  
 ✓ 8.78 +1.404

7080 +  
~~40~~

13.5

5.51 +0.37

13.5

ICE

30 1/2 1.88

5.85

(2) 1031 10 2 1/2

1037 10 7 1 1/2

1034 10 2 1/2

1037 10 7 1 1/2

1035 10 2 1/2

1 (X)

5.51 +0.37

10.5

10

05

00

00

11045

10 1/2 - 11 - 11 +

$+160440$   
 $3 \quad 22.7 \quad +16 \quad 58 \quad +35.4$   
 $3 \quad 23 \quad 48 \quad +17 \quad 22.5 \quad 9.42 \quad 6$

$-10$   
 $9.21$   
 $INS$

$+205 - 625$   
 $9.45 + 0.70 \quad +0.16$   
 $9.23 + 0.255 \quad INS$

$ND$

$\rightarrow +2045 - 057$

$+205 - 060$
$+205 - 065$
$+205 - 064$

8.93

3.37

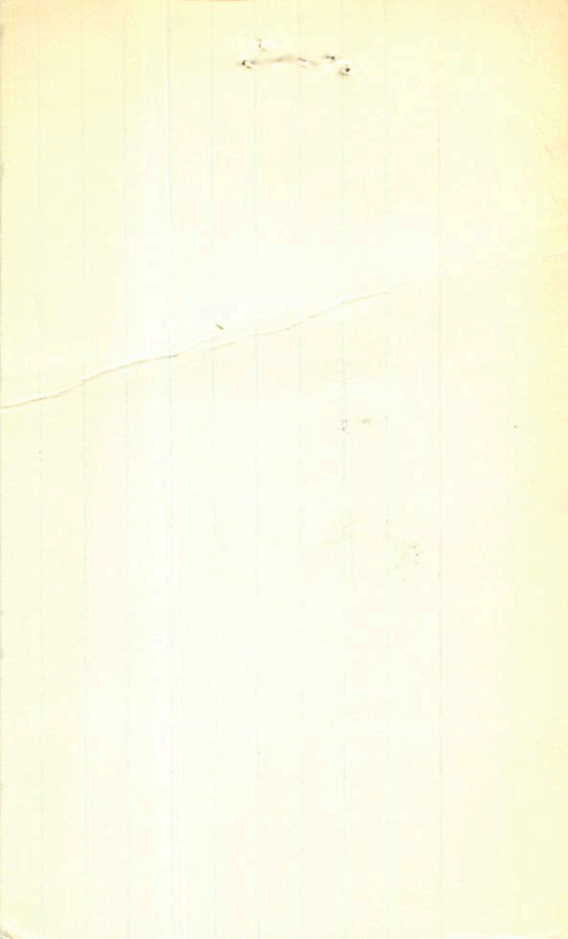
8.55

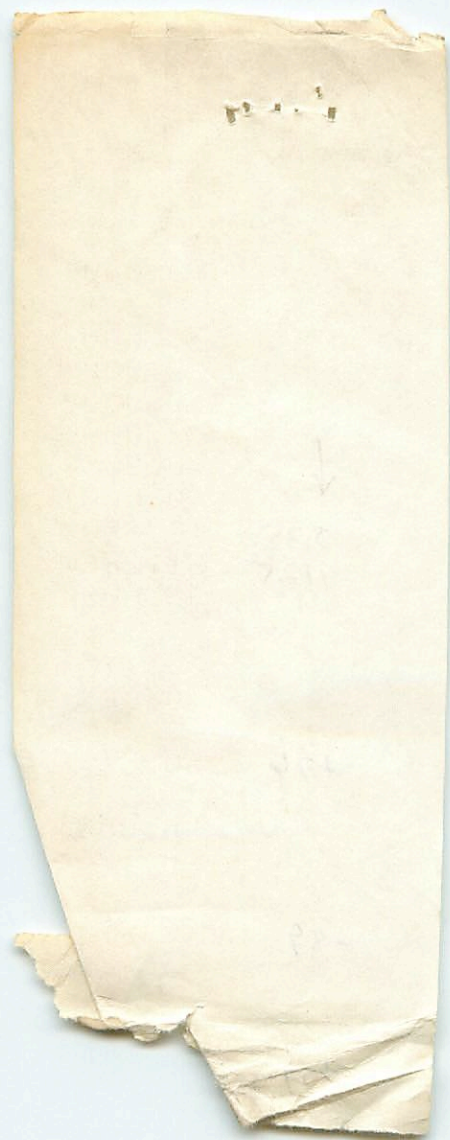
$3.55$   
 $5.25$

$+207 - 066 \quad Y$   
 $+1 + 7$   
 $+206 - 059$

$\rightarrow +204 - 066 \quad A603$   
 $205$   
 $-69$







1  
5-1-73

0.000+  
3.000+  
23.000+  
17.000+  
2.000+  
0.205+  
-0.060+  
3.550+  
51.286  
89.600

↓

5.25  
1125

0.415  
0.828

+76

58.749

-0.853  
0.18

-89

-27

121

+150481 ✓✓

21157

3

24

100

+15

4500

7.90 +53

1403

-548

29 Dec 82

7.90 +47

1402

-547

19 Dec 82

7.88 +38

1412

-574

12 Dec 76

7.88 +56

1406

-578

24 " "

7.86 +63

1402

-555

25 " "

158

1404

-545

(B)

7.87 +126 +1255 (2)  
7.34 +0.455 (2)

Again (A)  
~~1411~~ +205

7.38

+0.406

10 Jan 82

7.32

+0.397

13 Jan 83

7.35

+0.402

7.4

+724 20th

21157 3 23 80 715 45 291 102

+150481

7.88 +1255 +130 21 cent 72  
7.86 +1265 +129 29 cent 72  
7.87 +126 +1245

7.35 +0.46 20 cent 72  
7.34 +0.45 29 cent 72  
7.34 +0.455

+50481

21157

3 24

+15

45

+72.4

7.87 + 1.26 + 1.255 (2)

7.34 + 0.455 (2)

4.56

4.24

4.36

4.95

8.29

Don  
Miles  
N30  
+0.032-0.027

0.46-0.027  
Don miles  
N30 → F04Y

0.87-0.030  
4 → F04Y

0.415-0.0345

0.42-0.034

+0.37-0.44 Y

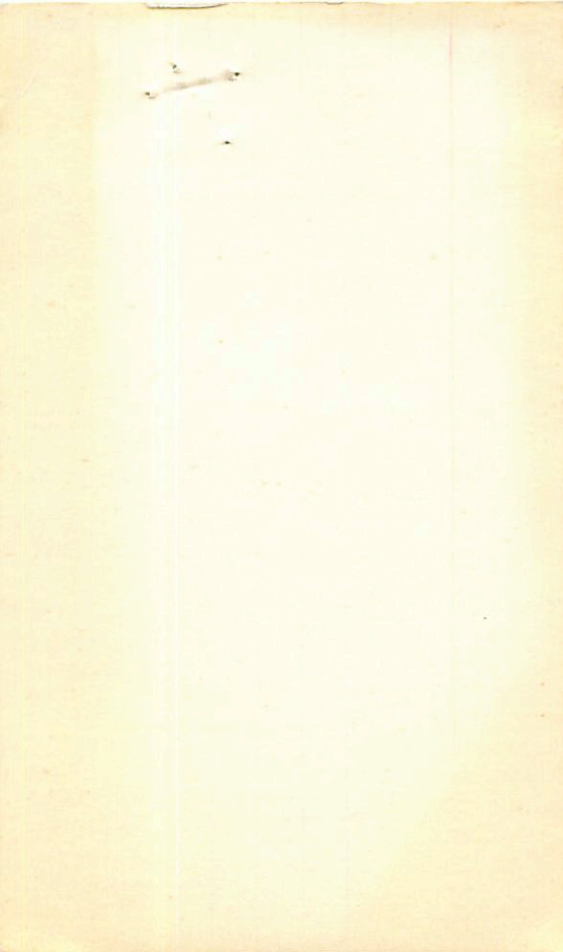
+1 + 6

+0.38 -0.038

-1 -1

+0.37 -0.039







⊕ √ √

1RF abn (R)

2.45 + 70 + 16 ①  
9.23 + 0.255 ①

+160 440 3 2 2 2-0

+17 0.81.5

9.55 302 924 5.8 22.6 74

9.40 293 931 5.22 24.6 76

9.24 286 923 5.18 25.11

9.22 291 937 5.19 24

9.44 293 926 5.16 ④

~~9.44 420 202 287 154~~

83  
+0.235 10 pm

9.20

9.23 + 0.255 ①

9.28 0.245 3.77  
9.26 0.25 ②

416

384  
305

1001

247

+16.432  
20524

03 21 50 +16 30

-17 71 -29 2  
8.33 +1.3 +14

✓ ✓

8.32 +164 1330 -444 1354 79

8.34 +162 1335 -439 402 79

8.33 +166 1332 -442

✓ 2.55 +0.522 +1.015

✓ 2.56 +0.514 +1.015

2.56 +0.515

+0.518

+160 423  
20955

03 22 05 +16 29 285 +47 120

+8 -34 -14.2

(X)

787 18 1244 -491 2 Nov 77

784 -6 1226 -477 14 Jan 78

788 4 1243 -499 30 Dec 77

788 -14 1246 -495 (2)

✓ 742 +396 4 Nov 75

✓ 731 +379 5 Nov

736 +387

(Checks)

705-24  
901760 65

25433-113" 644  
9.00 287 953  
9.00 292 930

4 05 45  
4 Jan 83  
Dishwater  
+ 43 41  
+ 43 41

(X)

8.55 - 226 987 - 428 14 Jan 78  
8.55 - 225 935 - 425 16 " " " " " "  
895 - 283 944 - 427 14

(A) + (A)

429 916 1224  
395

① 52.04 569.04 56.8

✓ 4.8  
✓ 8.4  
✓ 8.73  
P.V. ✓  
+ 0.239 1911  
+ 0.239 1767  
+ 0.237 5110  
70.236 ②

+130600

-295

25433

4 85 12

+13 34

9.085

MS

5.99 + 0.695 + 0.28

8.76 + 0.175 MS

1011 - 097

2.6

+13-97 Y

-3 +3

1010-094

ND







25933.000\*

4.000\*

5.000\*

13.000\*

39.000\*

0.011\*

-0.097\*

3.600\*

52.481

-29.800

-0.111

0.889

-32.301

-0.384

0.022

-20.799-



10647

①

26092

04

07

00

20

+13

28

875

+82

114

877-203

1149

-460

26092

878-157

1133

(444)

14 Jan 78

8.38

+0.301 (4 Nov 82)

873-114

1120

-461

16 Jan 78

8.30

+0.291 (4 Nov 82)

877-197

1134

-475

18 Oct 78

8.34

+0.247 ②

877-754

1121

-465

4

RV

~~877-754~~

8.59

+0.307

17428

8.30

1597

47007

8.30

1692

47007

AGR

111

✓  
✓

7-5 RS

80  
+12 08

24

4 04

4 06 15 +12 18 25 RS

273 - 626 881 +17 2363 50.79

224 - 624 825 +30 2364 6"

274 - 626 875 +24 2364

+16559

A61234F

04 06 40

+16

27

29 B9

(x)

760 -559 835 -3 2.350 14 Sept  
 766 -557 836 -6 2.348 22  
~~762 -603 837 77 2.354 18 Oct~~  
 762 -610 836 700 2.350 (3)

Eng 123  $V_0 = 2.10 \times 10^5$  - 178  
 + 85  
 2.27  
 6.27

26398 +16563

AG 12 350 09 09 45

+16 35 22 85

14+ (14)

√ 6.95-360 676-260 2.145 17 Oct 84

6.94-353 677-263 2.161 14 Sep 75 2.640

6.95-363 677-254 2.151 13 Sep 74

6.98-359 676-259 2.152 (3)

346 -632 658 2.634 446

(072) (885) (732)

Pt  
B7 II

Ey +408 V<sub>0</sub> 5.25  
M<sub>V</sub> 305/8.25

+140673

Byobh

+39.7

26756

4 12 40

+14 23 8.5 406

INS

8.42 + 0.205 + 0.25

8.20 + 0.27

INS

$$\begin{array}{r}
 +114 -10 \\
 +114 \\
 -3 \\
 \hline
 +111 -008
 \end{array}$$

Answer

//



109 -7  
124 -19

116 404 30

140673

26756 4 13 05 +14 34 8.52 + 0.95 = 66

See Pygals

10 17

1118 -135

8.55 - 285 966 - 454 14 Jun 91 401  
8.48 289 963 - 480 16 Jul 91 424 - 19 402

8.58 287 964 = 454 ②

4 10 - 7 4  
R

423 232 435 1706

847 430 225  
9.43 + 170 = 25 15th

2.46 + 70 + 20 7.51 + 650

9.22 + 0.255 = 11.975

8.78 + 0.225 = 9.005

9.20 + 0.21 = 9.41

8.16 + 0.225 = 8.385

9.19 + 0.234 = 9.424

1897

38

12

121

1/4  
2/3

11-11



0.111  
337.301  
0.429  
0.586  
0.688

✓

0.248  
-415.346  
0.615  
0.765  
-0.643

✓

44.219  
166.709  
0.903  
0.266  
0.337

H3

39.700  
500  
3.500  
-16.000  
121.000  
14.500  
4.200

657

11



5KY

149

+65.6 August  
43

27175-

4

15

50

+13

46 70265

6.90 +1.005 +0.535 21 Oct 12

6.92 +1.005 +0.575 29 Oct 12

+1.005 +0.555

6.93 -78 1014 -442 31 Dec 17

6.93 -77 1006 -434 1 Jan 18

-78 1010 -439

642

6.30 +0.438 12 Oct 12

6.44 +0.41 24 Oct 12

6.36 +0.42

6.40 +0.383 20 Dec 17

6.36 +0.357 21 Dec 18

6.34 -11380 ③

+1160577

756-26 var

27130

4 16 20 +116 54

8.24 +61 d66

VB 22, VA108

8.33 -243 989 -505 14 Jan 18 400

8.24 -253 1001 -518 15 " " "

8.31 -248 995 -512 (2)

464 260 356 1808

See Hayes

R 264

8.13 +285 manual

8.35 277 +33 7.71 +42 644  
mm

8.10 +0.271 12678  
✓ 2.61  
8.02 248 42078

609

1938 + 131 + 1121

H0257372

4 17 49 + 14 12 } 9121

6-8-20/27

20.80

210" 132 + 1.36

12.47 + 0.15 31 Oct 70

Apex ? (12.48) + 0.695 19.2.69 see other card

12.44 + 0.735 29 Oct 70

12.45 + 0.69

536

7.08 + 0.355 1 Dec 71

7.11 + 0.37 24 Oct 70

7.13 + 0.365 31 Oct 70

A

(467)

+ 0.365

✓ (PI) also (\*)

27372

4 18

40

+9 +17 13.5 2.53 797

~~See Sub~~  
~~100 parts~~

~~See Sub~~

100"

1318 + 13.5 + 124 (3)  
12.40 + 0.72 (4)

1 HI I

166 13.2

7.50	-118	+1148	-480	146077
7.50	-115	+1158	-448	310075
7.50	-119	+1160	-454	170075
7.50	-117	+1155	-444	

7.12	+0.365	2586
7.13	+0.345	267075
7.13	+0.34	307002
7.13	+0.35	(3)

\*7.50 601.408 307451

~~24616 3 52 53 22~~

27322 1951 [2551] 04 16 55 71 40 40 50 414 + 14 05 24

+13.662

1405 904 173  
1.101 908 157

G-8-

788 937 525 074 5 Aug 87

752-6511

13<sup>th</sup> hp dentant

1113 403 1160

WATER (212) 1113

571 205 6511

X

4180662

Sell

27872

4 18 03

+14 12.5 2.566774

Open 4

-19.1

INS

7.50 +1.005 +0.80

7.50 +1.015 +0.81

+14  
+0062 -200 664

+0076 1982

+1105  
-14  
0

1111-200

-10  
+17

1694 -2117  
+2  
692  
-209

+090

7.09 +0.365 INS  
7.36 +0.37 ①

6.2

6.7

+2.0

Other Pack



55,255

1508.6

+0054 ± 10.0 - 154 ± 8.3  
+0070 - 215

2676 1506.8

-227  
071

+0062-200

+8.44  
35.20  
1.28

16,215.08

33,757

27.58

1537.48

55,265  
15

2886  
-1.22

+72

-10

55,272

28,544

+201

-6.66

27372 69124 4 18 35

414 14 78 67 III

7.52 -124 1153 -426

-17

7.50 -118 1148 -444 1140075

493-211

2.52 -117 1147 -426 231111136

2.52 -117 1154 -437 24

2.52 -119 1150 -430

602 403 474

0.340

708 40325 2711187

706 4032125 " "

707 40320

\* 7.51 -518 -1436 -430 12911

7.52 -520 1450 -433 14 "

326

+120577



(1)

-11 -3 -51.3

27385 ~~+2470~~

4 18

30

+13

02

7.50 + 441.10

7.46

+2468

1345

-417

26 July 77

7.46

+2468

1329

-423

21 Jan 77

8/10 279 3321

7.48

+261

1335

-439

21 Jan 77

9.47

+263

1332

(-471)

14 Sept 78

7.49

+260

1335

-426

(4)

RV ✓

Again (X)

6.62 + 575, 4 Nov 78

✓ 6.65 + 573 5"

6.64 + 576 f

149014

+358

27771

4 21 50 F14 36 9.14 d69

INS

9.09 +0.845 +0.545 545.04 548.04 306  
8.75 10.29 INS

Amund Thyle

NO

+2

-3  
F162-031 +

8.160

+109 -031 690

