

W 27.40 P W Also

8.58 + 0.45 = 0.15

~~350~~  
-450 73

13 59 50 -37 56

11

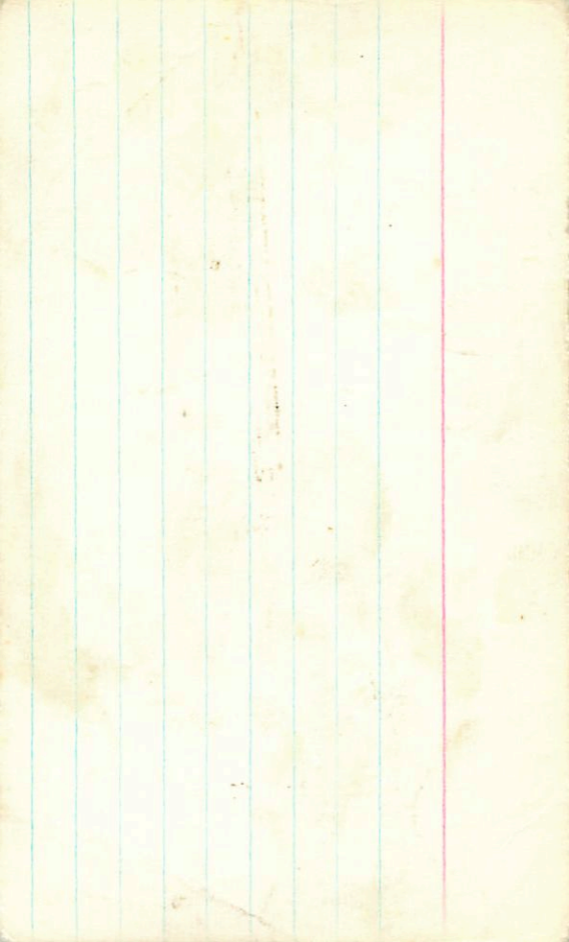
876-355 769 + 509 2.11 18 mar  
876-369 785 8.14 2.12 5 14/18  
875-370 + 766 - 479 25 Aug 25  
877-355 + 762 - 445 28 Aug 25  
876-389 + 792 - 500 2.11 8

496 + 347 = 1053  
-405  
509  
610

859-687 - 118 46  
418 76  
2 hrs 20 min  
1 hr 20 min

8.50 + 0.143 348  
15.8  
2.12 2.18

12.0 + 0.78



7101587

121387

FSWAG (II)

13 56 35 -72 13.5 8.6 40.5" 11

108-346	8.62	-403	829	-439	2.156	37m 80
114-267	8.63	-406	835	-436	2.166	5" 0"
114-280	8.62	-410	832	-438	2.166	

294 110 472 2640

FTK W SL

123585 ✓ 14 18 20 -44 16 90 0.05

✓ 930-318 901 -574 47 2146 25mar84

✓ 930-374 912 -581 185 2169 29mar84

✓ 928-377 905 -556 2154 12may80

(double)?-928-358-318-589 or 2144 3"

928-379 909 -581 2148 (3)

1 month 3-5 20-28 95 212 56

422 181 324

1180

527

86

3

-5001765

124543

✓

Row 5 III

14 14 25 52 92 26 40

921-94	1037	-454	5mays
922-79	1036	-450	6 n D
920-98	1031	-440	14 July 80
921-98	1033	-448	

132

430 302 462

X

(RT)

RR

1030	876	1030	1030
1031	976	1030	1030
1030	978	1030	1030
1030	876	1030	1030





4506837

12485 ✓

78180 WFS

14 15 40 -50 11.5 8.5 " 1.27

✓

8.66 -334 854 -476 2.113 (m) 80

②

8.68 -370 842 -474

8.67 -337 848 -474

2.111

(RSD) (X)

H 10/1/50 9774 85.8  
19 Prof 101 9774 84.8



134

1022 647 082

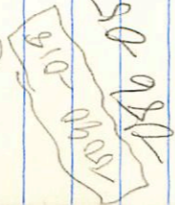
050595  
125499

-086-059

14 20 05 -55 40.5

G2W F6B  
9.20 0.42

⊗ ⊗



9.25-302-873-506 2.118 29mm 87  
 9.23-302-870-495 2.126 30"  
 9.24-302-872-500 2.122

-4306541  
126234

24 15  
23 38

65WFI  
-43 33 9.0 .11

14<sup>th</sup> 6

(124)

263 150 230

765 -156 928 -468 - 309<sub>pm</sub> 50

770 -167 830 -451 2.080 17<sub>pm</sub> 50

777 -172 838 -460 2.082 28<sub>pm</sub> 50

769 -168 830 -451 14 July 50

769 -168 832 -458 2.091

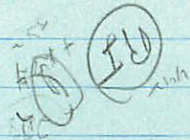
932 340  
234  
9.33

(5)

572 -118 455 2.555

RR

78P101001 10:8  
46018101 10:8



870-018

365 118 37 256

2100 5000  
2100 6  
2100 6  
2100 6

822-375 836-525  
823-340 838-522  
827-379 838-532

(H)

Go w Fails  
"07 82705"

126743  
14 28 40 - 22 41.5 82705 "07

126584  
1210087

Row F7

14 30 10 -68 43 8.46 +0.6''

✓

838 -347 880 -484 2.177 30 June 50

841 -349 878 -478 2.140 5 May 50

840 -346 860 -467 2.148 14 July 50

840 -347 873 = 496 2.1494

359 147 437 2.622

✓

-6602567  
(27689)

FOW (AS)

14 2405 -6637 92 -

X

$9.24 - 425 \quad 809 - 93 \quad 2.222 \quad 14 \text{ July } 80$   
 $9.30 - 423 \quad 906 \quad \textcircled{-28} \quad 2.215 \quad 1 \text{ July } 80$   
 $9.27 - 420 \quad 819 - 106 \quad 2.227 - 2 \text{ July } 80$   
 $9.29 - 423 \quad 811 \quad \text{---} \quad 2.227 - 19 \quad \textcircled{3}$

Aug 277 189 • 931 2721

554 121 779

9.5 /  
FV 1.02/5



BW<sub>92</sub> 40-317

(B) 274

14. 35 30 -29 01 7.7

25/11/52

805-257 268-555 2077 85473

(B) (B)

807-251 771-858 2154 12 mag 10

(B) (B)

808-246 758-520 2083 18 mag 10

(B) (B)

809-246 776-574 2080 18 mag 10  
809-246 776-574 2080 18 mag 10

(B)

Norm

274 1308 25074

320

↖

318

6702623

088-020 GOW F34

130967

14 52 40 -67 34

201 0.36

(A)

849-354 859-460 2.148 24man81

848-354 848-465 2.145 30"

848-355 864-462 2.146

020-880

-5007341

101254

✓

14

53 10

-51 19

9.3

.04

NOTE W

~~FN~~

33  
58

882-315 888 - 46  
884-315 888

(X)

888-296 888  
888-296 888

(X)  
sec 101254

889-202 893  
888-202 893

888-168 891  
888-168 891

888-908 888  
888-908 888

(X)

R

8.651 LIC. 04 59.8  
15.450

2.136 14812

2.120 14812

2.131 14812

2.123 14812

2.124 14812

2.127 14812



FOWA -12 +21

132686 15 00 10 -32 37 9.30

-32/157

(X)

9.38 -419 840-160 2.220 18 March

937 936 935 934 933 932 931 930 929 928 927 926 925 924 923 922 921 920 919 918 917 916 915 914 913 912 911 910 909 908 907 906 905 904 903 902 901 900 899 898 897 896 895 894 893 892 891 890 889 888 887 886 885 884 883 882 881 880 879 878 877 876 875 874 873 872 871 870 869 868 867 866 865 864 863 862 861 860 859 858 857 856 855 854 853 852 851 850 849 848 847 846 845 844 843 842 841 840 839 838 837 836 835 834 833 832 831 830 829 828 827 826 825 824 823 822 821 820 819 818 817 816 815 814 813 812 811 810 809 808 807 806 805 804 803 802 801 800 799 798 797 796 795 794 793 792 791 790 789 788 787 786 785 784 783 782 781 780 779 778 777 776 775 774 773 772 771 770 769 768 767 766 765 764 763 762 761 760 759 758 757 756 755 754 753 752 751 750 749 748 747 746 745 744 743 742 741 740 739 738 737 736 735 734 733 732 731 730 729 728 727 726 725 724 723 722 721 720 719 718 717 716 715 714 713 712 711 710 709 708 707 706 705 704 703 702 701 700 699 698 697 696 695 694 693 692 691 690 689 688 687 686 685 684 683 682 681 680 679 678 677 676 675 674 673 672 671 670 669 668 667 666 665 664 663 662 661 660 659 658 657 656 655 654 653 652 651 650 649 648 647 646 645 644 643 642 641 640 639 638 637 636 635 634 633 632 631 630 629 628 627 626 625 624 623 622 621 620 619 618 617 616 615 614 613 612 611 610 609 608 607 606 605 604 603 602 601 600 599 598 597 596 595 594 593 592 591 590 589 588 587 586 585 584 583 582 581 580 579 578 577 576 575 574 573 572 571 570 569 568 567 566 565 564 563 562 561 560 559 558 557 556 555 554 553 552 551 550 549 548 547 546 545 544 543 542 541 540 539 538 537 536 535 534 533 532 531 530 529 528 527 526 525 524 523 522 521 520 519 518 517 516 515 514 513 512 511 510 509 508 507 506 505 504 503 502 501 500 499 498 497 496 495 494 493 492 491 490 489 488 487 486 485 484 483 482 481 480 479 478 477 476 475 474 473 472 471 470 469 468 467 466 465 464 463 462 461 460 459 458 457 456 455 454 453 452 451 450 449 448 447 446 445 444 443 442 441 440 439 438 437 436 435 434 433 432 431 430 429 428 427 426 425 424 423 422 421 420 419 418 417 416 415 414 413 412 411 410 409 408 407 406 405 404 403 402 401 400 399 398 397 396 395 394 393 392 391 390 389 388 387 386 385 384 383 382 381 380 379 378 377 376 375 374 373 372 371 370 369 368 367 366 365 364 363 362 361 360 359 358 357 356 355 354 353 352 351 350 349 348 347 346 345 344 343 342 341 340 339 338 337 336 335 334 333 332 331 330 329 328 327 326 325 324 323 322 321 320 319 318 317 316 315 314 313 312 311 310 309 308 307 306 305 304 303 302 301 300 299 298 297 296 295 294 293 292 291 290 289 288 287 286 285 284 283 282 281 280 279 278 277 276 275 274 273 272 271 270 269 268 267 266 265 264 263 262 261 260 259 258 257 256 255 254 253 252 251 250 249 248 247 246 245 244 243 242 241 240 239 238 237 236 235 234 233 232 231 230 229 228 227 226 225 224 223 222 221 220 219 218 217 216 215 214 213 212 211 210 209 208 207 206 205 204 203 202 201 200 199 198 197 196 195 194 193 192 191 190 189 188 187 186 185 184 183 182 181 180 179 178 177 176 175 174 173 172 171 170 169 168 167 166 165 164 163 162 161 160 159 158 157 156 155 154 153 152 151 150 149 148 147 146 145 144 143 142 141 140 139 138 137 136 135 134 133 132 131 130 129 128 127 126 125 124 123 122 121 120 119 118 117 116 115 114 113 112 111 110 109 108 107 106 105 104 103 102 101 100 99 98 97 96 95 94 93 92 91 90 89 88 87 86 85 84 83 82 81 80 79 78 77 76 75 74 73 72 71 70 69 68 67 66 65 64 63 62 61 60 59 58 57 56 55 54 53 52 51 50 49 48 47 46 45 44 43 42 41 40 39 38 37 36 35 34 33 32 31 30 29 28 27 26 25 24 23 22 21 20 19 18 17 16 15 14 13 12 11 10 9 8 7 6 5 4 3 2 1 0

(X)

900 901 902 903 904 905 906 907 908 909 910 911 912 913 914 915 916 917 918 919 920 921 922 923 924 925 926 927 928 929 930 931 932 933 934 935 936 937 938 939 940 941 942 943 944 945 946 947 948 949 950 951 952 953 954 955 956 957 958 959 960 961 962 963 964 965 966 967 968 969 970 971 972 973 974 975 976 977 978 979 980 981 982 983 984 985 986 987 988 989 990 991 992 993 994 995 996 997 998 999 1000

900 901 902 903 904 905 906 907 908 909 910 911 912 913 914 915 916 917 918 919 920 921 922 923 924 925 926 927 928 929 930 931 932 933 934 935 936 937 938 939 940 941 942 943 944 945 946 947 948 949 950 951 952 953 954 955 956 957 958 959 960 961 962 963 964 965 966 967 968 969 970 971 972 973 974 975 976 977 978 979 980 981 982 983 984 985 986 987 988 989 990 991 992 993 994 995 996 997 998 999 1000

900 901 902 903 904 905 906 907 908 909 910 911 912 913 914 915 916 917 918 919 920 921 922 923 924 925 926 927 928 929 930 931 932 933 934 935 936 937 938 939 940 941 942 943 944 945 946 947 948 949 950 951 952 953 954 955 956 957 958 959 960 961 962 963 964 965 966 967 968 969 970 971 972 973 974 975 976 977 978 979 980 981 982 983 984 985 986 987 988 989 990 991 992 993 994 995 996 997 998 999 1000

9

-5505802

1334421

FS14W

15 08 15 -59 13.5 59+0.5" 02

(X)

+018-106

+10257-106

9.50 -342

9.88 -398

9.89 -386

9.89 -392

873 (-361)

893 -400

873 -391

872 -396

22085 May 10

2.19728 June 10

2.19611 July 10

2.19822

810 153 251 018 985 985 2.198





1564  
PLD  
66

-670304

✓  
149327 ✓

05B W

"04 404

16 30 00 -67 .15 8.55 +08

8.57 -189 963 -407 1 Aug 80  
 8.54 -187 967 -419 12 Aug 80  
 $\frac{8.55}{8.55} \frac{966}{960} \frac{967}{960} \frac{968}{960} \textcircled{2}$

X

✓ 9.25 +0.307 10 Aug 80  
 ✓ 8.24 +0.311 11 Aug 80  
 8.24 +0.309

Ⓟ R R

62°53'59"

48 W

.02

200 ASHS  
Bond Park

149130

N 34' 45"

62 36.5 88 1/2  
30 June

UW<sup>2</sup>

8.51 - 471 852 - 141

2.220 05:50 01

8.54 - 472 867 - 144

2.116 28 Aug 80

8.54 - 478 893 - 162

2.217 1 May 80

NR

8.48 - 474 849 - 150

2.221 3 Aug 80 03:15

8.51 - 479 826 - 103

2.220 04-10 02:55

8.52 - 474 857 - 142

2.219 5

194779

14 36 25 - 43 8.7

2.219 15 01:30

401 < 006

+0023-015

872



157559  
 16 47 55 - 27 32.5 8.5  
 27  
 6-1 W G-516 (114)  
 181112e-

852 142 893 404 41008  
 891 147 901 109 121008  
 890 144 897 108 121008

(11) ✓ (100)

8.47  
 8.51  
 8.49  
 10.344 8 0.003  
 10.340 9 0.003  
 10.342



154541  
-7801127

17 13 45 -78 54.5 9.21 F5 WFO

F5 WFO

(X) (Q)

9.18	-359	838	-358	2.160	13 June 81
9.16	-357	827	-356	2.158	29 June 81
9.17	-358	833	-357	2.159	

306 III

107  
 105  
 106  
 ---  
 107  
 105  
 106

17.2  
 -78.9  
 -114  
 -106  
 7.0  
 0

F2WAE/6

155241

(X)

17 11 45 -55 19.5 9.15 -05

5507952

9.09 -407 763 +579 2.175 23 Sept 80

9.09 -399 746 +617 2.189 26 Aug 80

9.08 -400 758 +589 2.185 28 " "

9.09 -402 756 +595 2.183

298 044 1530 2.677 17.1  
-553

+23

-39

8.1

0

var. More  
at least 2

-00A 030

+013-039

154201

(X) (X)  
17

35 ✓  
40

8.62 m  
-63 20.5 '06

9.9 FS pv 10' S  
9.0 150 pv 10' N

G6W G0 T1/10

8

8.56	-154	959	-364	13 June 81	(60)
8.55	-161	940	-374	29 June 81	(60)
<u>8.56</u>	<u>-158</u>	<u>950</u>	<u>-370</u>		

(+20 F) (X) (X)

<del>8.16</del>	+0.333	16 July 81
8.17	+0.330	17 July 81
8.16	+0.330	

161770

266  
+1  
167

17 46 21 -9 36

9.70 -233 780 -547 27 Aug 75

9.72 -225 783 -554 28 Aug 75

9.72 -213 746 -532 24 Aug 75

9.69 -235 757 -534 12 Jan 77

OK  
9.42 +0.34 (4)

9.71 -226 -766 -542 (4)





✓ John P. I ✓

✓ J. P. I ✓

9.68 + 66 - 06

16.1770

17

46

21

- 09

36

6.54 / 54.2  
9.44 / 40.32  
9.44 / 40.385

30 Apr 77

12 Apr 77

9.41 / 40.345

9.43 / 40.355

9.42 / 40.345

9.70 / 233

9.73 / 214

9.72 / 213

9.72 / 225

9.72 / 227

238

7

279

34

9.70 / 233

9.73 / 214

9.72 / 213

9.72 / 225

9.72 / 227

22 Apr 77

25 Aug 75

24 Aug 75

28 Aug 75

v.

⊙

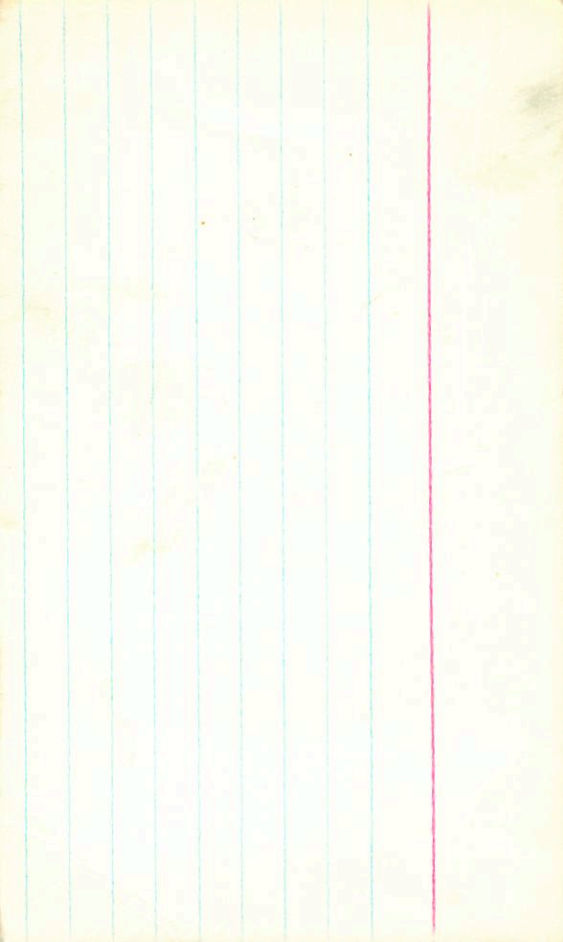
9.72 + 504 1047 + 386  
386

544

767

544





(X)

162644

17 59 00  
sum 23m 0.7

AG/W

-38 50.5

8.60

20-02

3500291

867-454 870-154 2215 7 Jun 83

8.22-404

11.3

24.5

-59

14/40

18

-8509213

166913 ✓

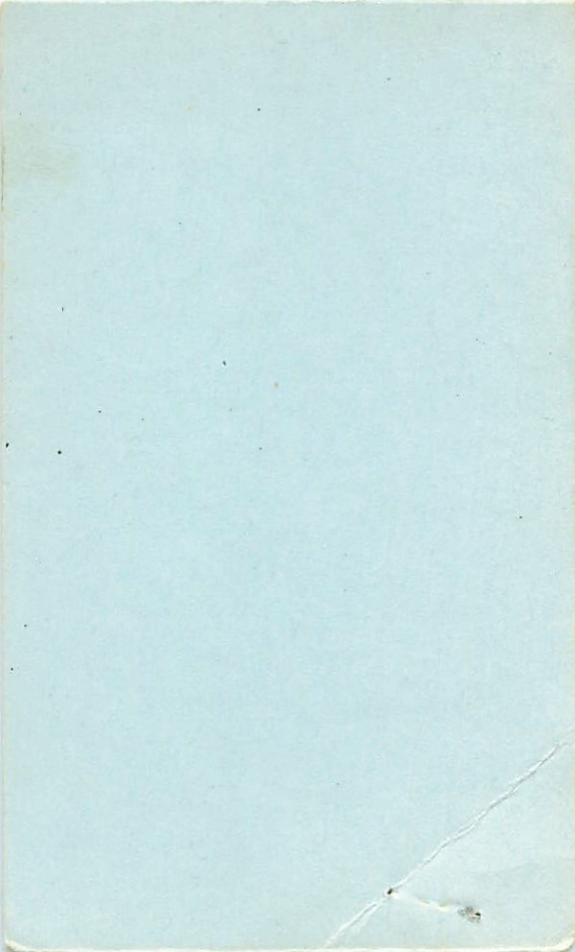
Doß ✓ zur

164 309

zur

(N<sub>X</sub>)

25M-106



✓ (PI) ~~240000~~ ✓

8.20 + 4.85 - 1.00 = 12.05

✓ 166913 ✓ 18 14 30

-59 24.6

⊕ (PI)

253 247 818

8.26-377 166 763-92.8

8.24-386 744-55-446 788-42.8

8.23-382 744-547 813-1000

8.28-380 744-537 2135-890

8.17-342 783-586 2150-1000

314 072 372-2125  
(147) (306)

8.09 40.15 40.15

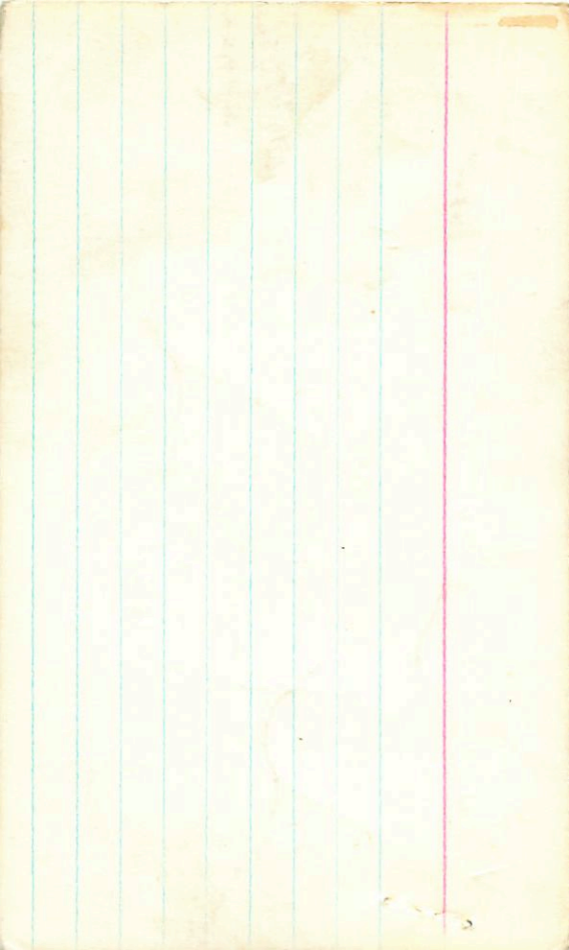
~~8.02 40.22 40.22~~

8.19 40.18 40.18

8.07 40.20 40.20

8.09 40.20

8.12-40.19 (3)





FEB 07 5

168218  
812871

18 19 90

-49 09 90 .06

XX

~~49.40 90~~  
49.10 52

9.12-334	843-458	2.123	11 Aug 90
906-332	839-459	2.116	17 Aug 90
909-333	841-458	2.120	

~~1002-027~~

-053-020



8.92 + 0.228 24 April

(15) (610)

1000 520 000

1000 high  
A5 - 84  
29000000

1000	648	1000	648	1000	648
848	848	848	848	848	848
1000	848	1000	848	1000	848
848	848	848	848	848	848
1000	848	1000	848	1000	848
848	848	848	848	848	848

170505  
18 35 00 - 74 24 9.1 + 0.35  
F35W AS  
"02"

170505  
18 35 00 - 74 24 9.1 + 0.35

MSD  
MSL  
MS

03

Mo P.F.

CS III - IV

170737

18 28 55 +26 39 8.08 +8.2

5, 25 22

8.11 -207 931 -513 16 mg 76

8.09 -188 881 -481 21 mg 76

8.09 -184 910 -510 23 mg 76

8.12 -205 913 -486 24 mg 76

8.10 -195 909 -498 (4)

74

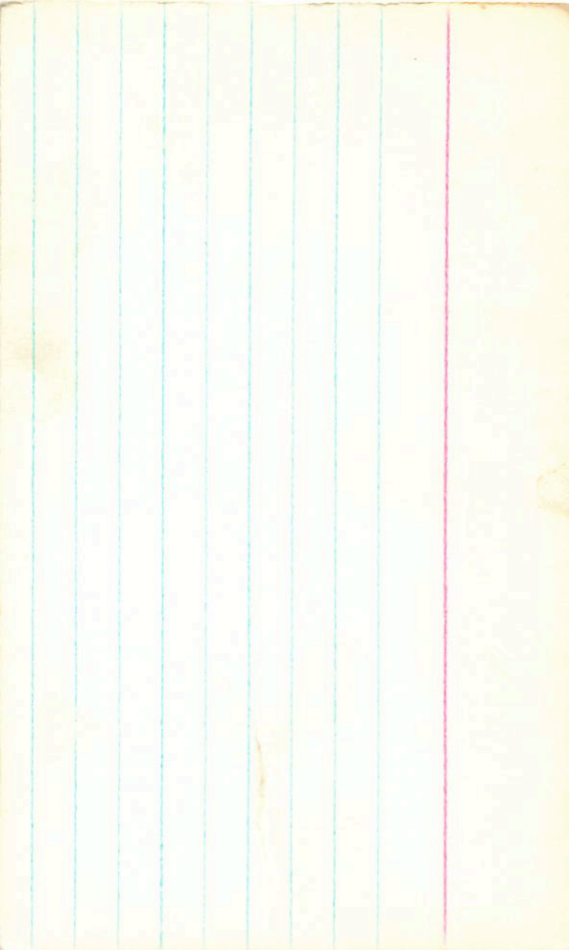
7.91 +0.345 6 Sat

7.81 +0.31 17 Sept

7.83 +0.30 4 Sept

~~7.85~~ +0.305

7.85 +0.32



Abd RFA ~~2004~~ X

10.57 + 64 - 08

+1303683 18 32 07 +13 08.5

G141-19 ✓ 51 N

43 2324

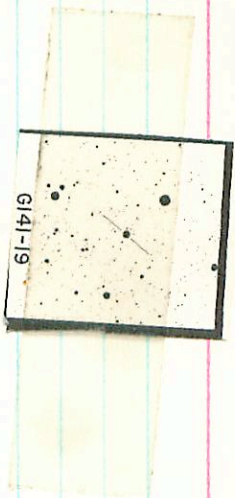
10.57 - 218 + 755 - 555  
 10.56 - 216 770 - 623  
 10.55 - 224 767 - 576  
 10.54 - 198 721 - 570  
 10.57 - 214 755 - 591

10.27 + 0.815 45476  
 10.31 403256  
 10.29 40.32

26 Sept 75  
 21 Apr 76  
 23 Jun 76  
 24 "

(4)





G141-19

✓ 700525  
170909 ✓✓

66W6013 .07  
18 35 15 → 70 32 8.5 + 0.9

8.55	-156	1009	-391	28 June 80
<u>8.43</u>	<u>-152</u>	<u>998</u>	<u>-372</u>	1 July 80
8.50	-154	999	-382	
	560	265	532	

(R.F)

RR

✓ 8.09 +0.346 10 July 80  
 ✓ 8.10 +0.344 " "  
 8.10 +0.345

173859 18 47 30 -29 27 99 6/20 W

9225105e

④④

947-349 875-496 2.126 7 June 83  
947-346 877-509 2.134 25 Aug 83  
946-348 896-503 2.130 ②

01.500  
42.000  
-157.000  
6.950  
245  
0.000

0.269  
-0.351  
-0.897  
294.461  
72.282

0.374  
0.896  
-0.239  
-628.616  
-152.343

-0.888  
0.271  
-0.272  
-311.918  
-76.567

67W FS

174036 ✓ 19 49 10 40 24 10.3 .05

X X 934-184 903-371 28 June 80

927-188 916-381 11 Aug 80

927-184 916-384 16 Aug 80

927-181 916-388 (2)

(R)

R

8.51 + 0.340 19 Aug 80

-51 11071  
 175606 ✓ 18 57 15 -51 29.5 10.0 "16

18.9 ✓  
 -51.5  
 +42  
 -157.6

85  
 17 (n=147)

9.900 4' N

(18) 1 max

9.86	-373	773	-509	2.139	28 Jun 80
9.75	-359	753	-509	2.135	19 Jul 80
9.79	-377	786	-537	2.122	11 Aug 80
9.80	-363	772	-520	2.131	25 Aug 80
9.87	390	790	510	2.131	26 Aug 80
9.81	-369	778	-512	2.134	

336 067 396 2.607

+022-157



-10-40

177871 (X) 14 06 35 -32 37 24F  
C-0/2 WGS II

-3214875

7.97 135 977-370 7/m 8  
7.95 -127 972-373 7.84 8  
7.50 -131 974-372 @

✓

7.53 +0.332-96 8  
7.52 +0.334 8 6 8  
7.52 ✓ +0.333

(R17)



743  
181473

19 22 15

F85W  
-45 06 10.1 "8

done

459704

(W)

40

-057-000

✓

184190 19 33 80 -39 50

550 A7/9 wh

100 100

100404

980 980 -453 876 -151 224425

875 875 -453 876 -220 224631

979 979 -453 876 -208 2245

212 147 707 2.740

52025

209 669

209 666

69.1

212

999 602

100404

208

208

999 602

100404

187

208

999 602

184598 19 35 40 -42 51.5 9.5 -1

GOWFB

434035 ✓

~~1774~~

+114-033

9.06	-374	871	-495	2.131	28 June 80
<u>9.00</u>	<u>-355</u>	<u>860</u>	<u>-522</u>	<u>2.133</u>	1 July 80
9.01	-341	855	-487	-	11 Aug 80
9.02	-342	863	-493	2.132	(2)

1217  
276  
136

800 +126 +88  
 7.23 +60  
 48.5

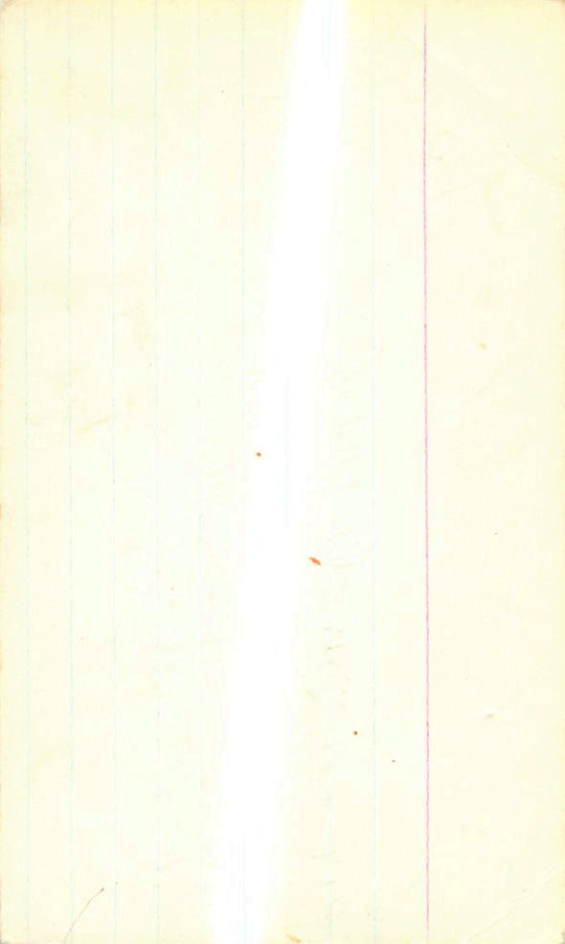
(N+) ✓  
 189711 ✓ 19 35 48 -39 48.5

(\*)  
 8.04 +202 865 -67 5 Oct 79  
 8.04 +197 877 -89 13 Sept 79  
 8.03 +203 865 -119 23 Jun 76  
 8.08 +203 866 -71 24 Jun 76  
 8.06 +198 886 -97 30 Jun 73

554  
 597  
 595

729 +0.535 9 Oct 73  
 7.32 -0.537 8 Oct 73  
 7.30 +0.537 ②

8.05 +200 872 -74 ⑤  
 (R) (PI) ✓



184190 ✓ 19

GSWAF

Nov 18414

058

A71A9 wh.

33 12 -39 51 9.80 +10 AD

9.78 -482 860 -220

2.246 25 Oct 79

9.80 -463 876 -146

2.244 25 Oct 79

9.77 -480 851 -155

(2.261) 12 Oct 78

9.76 -480 866 -217

2.247 13 Oct 78

9.75 -484 853 -208

2.246 (4)

55472 502 928 984



Num 184711

Ac.

184672

19 35 20

-36 00 0.50 000

10.58

-581 863 +207

2.378 36000

10.55

-590 881 +203

2.328 24000

10.56

-592 893 +172

2.359 8000

10.57

-584 876 +202

2.366 ③

+109

156 1118

2727

E(1.2) + 0.052

1010 15

M<sub>v</sub> = 70.95

9.3

1869  
W. H. G.

Mem 184711

36.0 13607 19 82 45 -36 06 9.03-15  
9.06 605 829 -31 9.325  
9.05-617 835 -35 2.320 8.4.75  
9.05-607 834 -46 2.379.8 "6"  
9.05-610 834 =37 2.320(3)

097 167 273

120 200

1120

10 7.6

E117) =+10.5  $M_v = +0.7$

(9.0)

184779      36  
 19 3~~6~~ 35 -43 57      2.450  
 9.3 43/5 (10)

44.9613

8.94-515 860 -88      2.246 17 Aug 50  
 8.96-525 868 -86      2.246 22 Aug 50  
 8.96-529 876 -78      2.235 23 Aug 50  
8.95-523 866 -84      2.242 0

1030 015

168 149 737 2.752  
 19.6 04 18 5

-43.9  
 +42  
 -15  
 9.1

175 194 802  
 209 239 106 13.0  
 171 045 196





156215 ✓  
2258052

19 45 35 - 65 39 10.6 -  
6215 W F516#

969-184 868-367 25 Jun 80  
940-198 858-372 1 July 80  
965-190 864-370  
519 515 542

(2) RR  
927 929 928  
10.327 10.327 10.327  
11.327 11.327 11.327



FW  
160617 ✓ 17 ✓ 41 25 -40 18.5 8.5 " 4"

980 49 43

Reprint FB

(W) (FB)

Mr. J. D. Small  
Imperial

✓ ✓ ✓ ✓ ✓  
also (RF) ✓ ✓ ✓ ✓ ✓

8.76 50404 9C.8

160617 17 41 05 -40 18.5

410

(1)

8.76 0.3850065 3462.614

8.75 -383 767 -502 2.125 17 Aug 50

8.77 -363 +767 -477 24 Aug 75

8.78 -360 +795 -483 25 Aug 75

8.75 -361 +793 -474 25 Aug 75

8.76 -358 +796 -472 17 Aug 50

8.74 -355 882 -415 -788

8.76 -367 785 -415 -986

8.55 +5104 55.8

8.70 50204 8.8

8.54 +216 45.8

50204 55.8

⑤ 4116-415-986  
336 323 101 32

