

181720 1950] 19 19 3825-33 00 38.4

29854

Quadrat

8.07 792-208-092-29140

2016 56100
101

56

+

1016 590+007

016

1220 924 (10)

1745 952 94

182154 1500 19 21 23.08 -30 53 54/0

-31.11.88

100

7651.07 29 8.08 1012-525 024 24 Aug 29

$$\begin{array}{r} 8.08 \\ \times 101 \\ \hline 808 \\ 8080 \\ \hline 81608 \end{array}$$

342

IT

1239 966 104

12001

$$\begin{array}{r} 232961 \\ \times 104 \\ \hline 928644 \\ 2329610 \\ \hline 2402571 \end{array}$$

12

11

183414 1950] 19 29 46.54 -70 4 58.0

499C-06-

8.17 824 293-084 7Aug 89

7.52 0910

(X) X ^{Wingless} 9.66 1317 260 -041 Aug 91

417.3552 - 2558.14
(450) 19 29 24 47 41

8/26/25

16.4

852 802 279 106
1021 299 662 100

X

623-7 (450) 19 33 11 81 27 12

1171 976-11

12/21/19

10.02-0.910 1045 947 393 -094 4 Aug 89

X

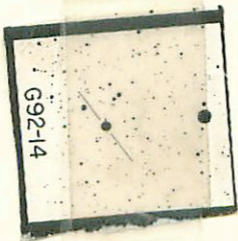
184711 1450) 19 33 47 -39 51 13

8.05
1.36 W

184719
 0.3776
 8.82+6
 11.92-11
 184716
 692-11
 7.57+67
 103758
 184717
 19 34 40 - 00 17
 9.54 231
 6224

9.05 1008 377 -032 8.60 -699 12 808 17
 9.05 1009 373 -034 8.60 -698 11 " "
~~1008 375~~ $\frac{1033}{0.33}$ (2-15) 2034 266
 1030 6.56 400 0.3
 19 3.5 00 400 0.9
 26.7

7.78 1638 388 -022 7.28 -685 12 808
 7.28 1013 411 -023 228
~~1008 375~~ $\frac{1026}{900}$ $\frac{1006}{900}$ $\frac{1022}{900}$
 1048 681 014
 1011
 1011



18628

1950

19 42 45 - 65 43 12

✓ 195022

942-897 303-054 4Aug89

✓
fresh pine

(*)

5/16

MSHG

4.58 h0 51+ 62.65 74.61 1950

187401

3504.414

~~115-966L~~
A/B

h-56 v.

195807

W630

19 56 15 -12 37

8.52 75-482

1958

9.30 + 1.30

(✓) ⊕

14^m 65^m

9.86 1144 1140 -137 8.51 -332 11 July^{EV}

9.87 1152 1118 -121 8.53 -323 10

9.86 1148 1129: -129: 8.52 -327:

1178 1486 -100

870

033

1042 2401
BKA 17 295

G23-20 ¹²ms 19 59 35 + 9 18

11.60 + 0.04

(7)

11.83	1020	281	-010	11.24	11.24	-638	12 pages
11.83	1017	292	-010	11.24	11.24	-636	11 pages
11.83	1018	286	-010	11.24	11.24	-637	

hms
cut

10.50 5 13 025
01.01

01.10

G23 - 20.21



Antwup

7.72 + 575 - 105

18958

19

55

55

18

-12

7.29 + 0.245 + 12.77

~~AT~~

~~2B~~

R = 252

R = 423

74

203

377

7.78 - 320 + 1758 - 443 - 531

* 7.78 396 odd

7.78 (304) + 808 - 531

26 Sept 75

~~7.78 + 440 + 692 - 1294~~

7.72 + 330 - 511

819 - 531 - 1173

~~7.78 + 402 + 141 + 246~~

7.72 + 330 - 511

819 - 531 - 1173

7.78

~~7.78 + 680 + 1017 - 1294~~

7.72 + 330 - 511

819 - 531 - 1173

7.78

12

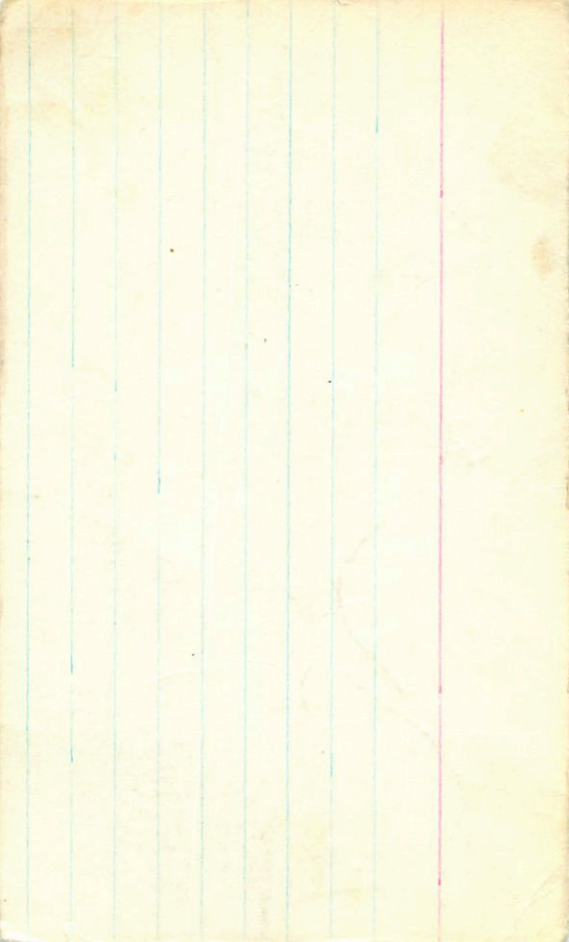
12

7.72 + 330 - 511

819 - 531 - 1173

12

12



$18955F$ ^{ant} 19 59 55 -12 18 $1-45$
 NO 7.75 25
 -12.5613

$7.72 + 575$

(X) (X)

7.95 999 262 -012 7.50 697 11 $11/200$
 7.96 999 259 -005 7.52 686 10
 7.96 998 260 -008 7.51 691
 1.028 537 029 2.22
 0.56

201

200 5th 863
62 176

G24-3

Wagner

20 04 45 +04 00

10.38 +220 RI

10.44 +0.48

41843

(x) (+)

(+) 10.67 956 ~~484~~ 024 10.27 -703 12 July 86

10.67 958 192 016 10.27 -715 11 July

10.68 959 184 024 10.24 -711 10 "

10.67 958 186 022 10.28 -713 (3)

988 463 029

963 455 057

096

702

192340# 1950 20 11 42.32 +06 25 32.5
B

03/5/45/40

20 11 42.9 +06 26 14.9

9.01 817 323 -061 29.4

8.12 648 40
8.78 845

8.28 817 294 -059 29.4

T

143721 1957] 20 25 06.26 -87 08 0.25

58645H

58645

10/11

194960

1950

20

26

050

-18

02 22

mm

300" for 47

658

8107

6.94 972 518 082 26 1145

(109)

T

1196 901 162

44
196454 (450) 20 36 482-603708

605420

9.54 954 436 010 7Aug 59

m898e9

Ⓢ

196866 [0531 998951
Post 1950] 20 38 35 11.8 37 11.8 38
050 TUVVZ 33.9 N2II 50 504

6214 26.9
182 29 N2II
121 121
189 2911 582

20 Feb 1 207 126 277 207 126 277 207 126 277

981 6901 8581 744
251 6901 1051 245

1267
3521

751 6901 0521

1270 1270 1270

141 5501 8921

107 9901 0521

202
107 1901 0521
107 1061 202

T

198/484 Rent NO 20 44 10 -43 01 8.65+25 633

8.88+0.65

(x) (+)
(x) (+)

9.10 1008 352 -044 8.64 -684 12 July 86
9.10 1006 353 -037 8.64 -682 11 July
9.12 1000 360 -041 8.66 -678 10
9.11 1005 355 -041 8.65 -680 (3)

1027. 636 -603

(082)

233

1.338 1262 154

197577 (151) 20 42 13.0 -8 11 19.1

~8.5460

101 90

389

937 LEB

106 598

578

304

150 408

126 236576

19 19

+

1089 570 151

585

6891

1089

2

~~G2475~~

1550) 20 44 30 10 22 18

R189

1207 + 57

Neophytia

148095 (1570) 20 45 2.4 + 1 35 80.0

1.43123

(A)

7.80 3111 08.6

981 6.05

CS Payne
CS Andy

7.79 4211 6.6

205 2.05

T

4.15

4.11

Z

-48.10496 Act 20 52 40 -48 17.5

10.68 + 51

1.011 483 034 Nova

10 60

(+) (+)

10.88 965 207 + 1012 10.52 - 726 12 July 86

10.88 963 206 + 1007 10.52 - 718 11 " "

10.90 963 211 + 1001 10.53 - 710 10

10.89 964 208 + 1007 10.52 - 717 (3)

986 486 48

198

8

203

637 + 866

198752-20 52 25 -36 16 144TH

714 133II

7167 1316 981 193 12 1956

7167 1311 978 193 11 1956

7169 1304 980 190 10 1956

10x

1000

~~1337 1261 144~~

236

199378/9

(1950)

20

5-4

04.1

+14

37

23.5

+14.4478

269 950 344 052 251497

T

Dist. no. 6-50 608

199288

1950.0

20 54 214 -44 16 28.5

1012 587

(X)

6.75 987 310 -35 23 Oct 86

6.76 790 212 101 19 July 87

6.77 1483 521 107 20 "

you
Ramin

1.012 587 004
1014 595 002
1008 604 008

(Z)

*

1011 596 002

1011 595 002 (3)

24

199523 (1950) 2.0 55 18.0 ~12 8 55.2

-12.5876

2.77 1141 569 211 236486

4

2.77 948 474 142 197987
224

1.177 846 280

1166 553 228

1169 850 228

2

~~11~~ 819 A

21 04 240 -14 ⑦ 21

2009/8

11m 4''

7.24 N1E

Notes

202917 (1900) 21 17 18.4 -53 14 42.5

8.5

8.60 1019 415 ~~256~~ 230x86
8.85 820 302 -082 204x57
1044 692 +022
1044 605 +14

*

203364 1950] 21 19 17.25 -09 32 28.10
(12.14)

6.8) 224 1029 624 304 29.14.53
1.12

↓ 1251 1005 383

(372)

203484 1950 21 20 27.82 -33 00 09.8

-33.1550

P.80 FIVE 909 896 348 -071 19 Aug 87
908 919 352 -076 4 Aug 87
908 350 -074
113 ✓ 733 +13

21(x)

14.4674 1250 25 24 12.6 +05 13 37.1

150153 Detm

8.5) +58

8.71 790 193 -104 296480
8.71 803 198 -100 4 Aug 84
8.71 996 195 -102

1070 87M
6m6 1004

1 ⊗ T

1.076 1014 21 39 40 -43 24.5 12.5
 206094

1.076 835 115 D Smith

$9.71 + .77$

+	10.00	1060	562	$+070$	9.40	-640	12	12
+	10.00	1059	570	$+073$	9.40	-642	11	11
+	10.02	1059	564	$+074$	9.41	-634	10	10
	10.00	1059	565	$+074$	9.40	-641	10	10
		1084	572	$+070$	9.43		268	

261

1110 1023-015

207144

1614 21 46 45 - 40 20.5

816 355 K32

8.154598

8.44

1088

742 - 053

816 816 - 541 1147

8.44

1085

744 - 042

818 - 535 10

(4) (+) (8)

858

1086

743 - 047

817 - 538

1108 1024 - 026

363

225

204

1111020 1020

200178

-53.10158

1950] 21 45 22.69 -53 15 02.7

925 540 401 -609 Aug 91

9.67 933 405 411 29 Aug 87

9.66 946 424 511 4 Aug 89

946 946 511 511 010

20300

~~10~~ 10

207175 1550) 21 45 24 -53 15

QSW6088

0936/0.96 X
9.6 940 401 -009 Aug 91

108

1953M

267553 255602 214735.1 -1625414

2561

2565.91-

8.51 1028 467 -022 28082

8.54 828 367 -079 400-698

1053 744 +012 1104 446

1051 750 +015 5104 056

2

207760

-4/9718

(950)

21 49 27 -40 48 28

809 66

8.33 828 229 -067 4 Aug 89

(X)

LFT 1676 21 59 27 -37 19 12

1180 + 160

1/2

6-4-2 485

~~206301~~

Pact
MO

22 (10) 15 - 5311

F82

208595

53.10224

~~734~~ 984 308 -029

12 July 86

7.15 + 57

734 984 303 -026

11 July 86

7136 982 300 -029

10 July

(X)
(X)

7.35 982 304 -028

(3)

1.007 585 010

095

1030 644 088

209449

Hyg

22 03 30.3 -38 56 49 (1985.5)

22 03 10 -38 58 ✓ 2.27 GE/NOII + F/G

(X) (X) (X)

7.26	-277	965	-396	2.142	13 Jun 84
7.25	-271	951	-395		11 July 84
<u>7.25</u>	<u>-274</u>	<u>958</u>	<u>-396</u>		

(4)

7.48	1008	413	050	6.98	-707	12 July 84
7.48	1012	404	054	6.99	-705	11 "
<u>7.48</u>	<u>1010</u>	<u>408</u>	<u>052</u>	<u>6.98</u>	<u>-708</u>	
					6.98	+0.202

1958 476 8501

210277 ¹⁶¹⁴ 22 08 25 ^{625 245} -07 38.5

6611075

DDO
only ~~(X)~~ ~~(X)~~ 6.79 1036 486 022 12 Aug 54

6.79 1039 484 020 11 Aug 56

6.80 1034 485 022 10

6.79 1036 488 022 (3)

1055 762 055

1.061762055

~~141 1000 10 048~~

~~402~~ 191

~~207786~~

1950) 22 12 53 -35 10 04

h/111E

rec 5158-

10.20 947 423 -007 4 Aug 89

M 591586

X

213630 1950) 22 30 467 -89 02-48

506 (8:10) W

9.36 929 414 -060 414 89

X