

39743

2000 / 05 46 07 -16 14 6.17 + 89 60

6276-5

✓ RRC 6.17 170 1058 -444 27 Jan 58

6.18 -178 1064 -447 10 Dec 77

6.18 -170 1063 -438 11

6.18 -173 1064 -443

(X)

~~SHK 327~~

1991

542 -322 -417

5.72 -412928 Jan 75

5.82 40301 15 Mar 75

495 356

5.87 296

308

1987 ✓ 05 45 37 +69 30 5.80 888 68.14

12^m 17"

R

5.81 -123 1060 -436 26 Nov 77
5.80 -169 1061 -473 27 Dec 77
5.80 571 1060 -470

5.39 +0.305 30.2075

5.41 +0.305 41.2075

5.41 +0.305

Aut Grant

MV = 43.4

34524

1554

5 45 20 + 0.95

5.96 + 58.64

5.54 224 984 242 6/Jan 73

5.52 211 978 406 26 Jan 76

5.53 211 969 406 29 " "

5.52 224 950 354 2 Jan 77

5.53 236 982 393 - (2)

5.52 220

5.52 440 240 240

5.52 220

5.52 220

5.52 220

U + R

5.52 220

5.52 220

5.52 220

5.52 220

5.52 220

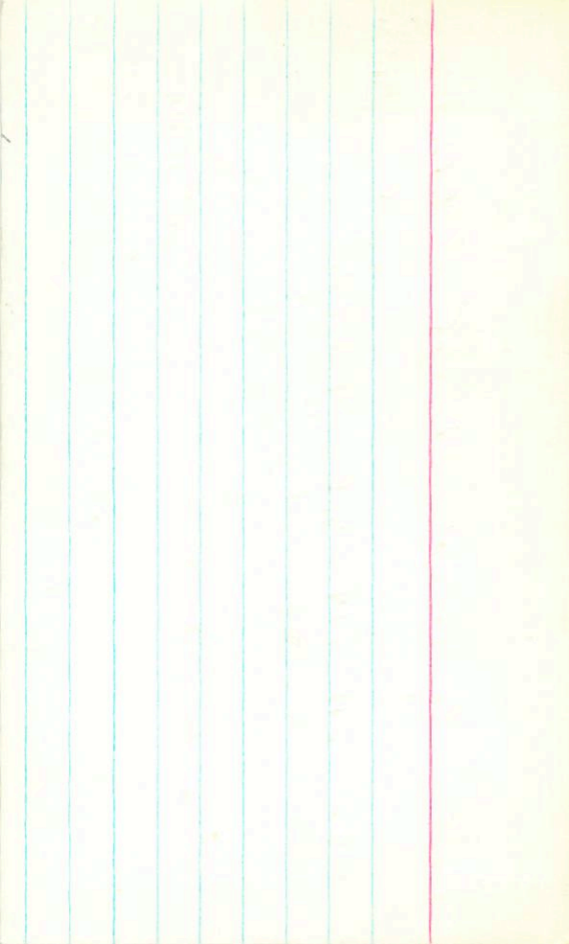
5.52 220

5.52 220

5.52 220

5.52 220

5.52 220



2002 65 47 36 +24 34 476 GST

✓✓

5Cmoff 995-566-1 Jan 75
5Cmoff 195-010-561 50th
" 18 485-1204-584 31 "

487 65- 88.5
488 65- 1204 = 570

(10)

2007

2009 05 46 30 -35 40 6.31 +114 100

✓✓ RRR

6.33 +3 1296 -455 11 Nov 77

6.31 -4 1294 -446 28"

6.32 0 1295 -450

5.71 +0.406 5 Nov 77

5.74 +0.406 16 Nov 75

5.72 +0.406

2013 05 49 31 +27 58 5.52 967

✓ 5.60 -119 1111 -425 24 Jan 77

✓ 5.61 -135 1132 -457 26 Jan 77

5.58 -119 1114 -415 27 Jan 77

5.60 -119 1112 -421 ②

5.30 +0.227 5 Jan 77

5.30 +0.321 4 Jan 77

5.30 +0.324

2014 ✓ 05 48 46 +09 52 5.81 +87 503

580 -181 1093 -440

5.80 -174 1079 -430 30 Jan 77

5.79 -182 1097 -455 31st

5.80 -181 1095 -447 (2)

2015

0 337

5.80 17

5.50 +6.278 3 Jan 78

5.80 +3.713 5 28 Feb 78

5.80

5.84 282 413

5.89 +0.30 20 Jan 72

5.85 282 413

5.44 +0.305 27 Jan 72

5.48 282 -19

5.45 282 413

5.45 +0.295 (4)

5.48 282 413

282 (2)

2016 05 49 11 414 19 5.55 289

✓
✓
R

5.56 + 100 + 0.82 (1)

5.56 - 115 1196 - 467 30 Jun 77

5.55 - 113 1188 - 473 31 ¹⁴ 7.50 + 265

5.56 - 114 1192 - 470 7.55 + 366 34 83

5.12 300 320

(V)
(R) (N)

5.12 297

5.20 317

5.16 304

323 (2)

5.23 297 317

5.13 10.34 25th

5.23 10.317 3 Jan 78

5.18 7.25

2017 05 47 13 -40 39 4.61 +112.40

✓ R R

6.64 -44 1262 -460 8 11177 24"

6.63 -41 1258 -486 28 .. "

6.64 -42 1260 488

6.09 +0.361 ~~516677~~

6.07 +0.359 41715

6.08 360

2019
5/11/19

05 44 00 404 26 5.58 + 1.36 9.22

RR 5.57 + 58 1444 - 454 26 20.77

5.56 + 54 1453 - 466 26 20.77

5.56 + 54 1453 - 466 = 9.61

5.27 + 5.18 10.45

5.27 4.73

(R)

5.27 4.73
5.26 9.25
5.20 4.51

5.26 + 0.75 6.01

5.34 + 0.47 5.81

5.35 5.81

2021 05 48 34 -14 29 5.48 + 88 956

9^m 3"

✓
✓
RR

5.51 -194 1071 -478 1080 77

5.51 -194 1067 -464 11 "

5.51 -199 1067 -470

~~528~~ 327 439

[485] [334] 152 $\Delta(m) = -0.57$

E 8031

5.17 +0.289 3/10 78

5.25 +0.288 15/10 78

5.21 +0.288

257

043
046

201

✓

2022

~~1111~~

(PI)

(X)

04

5

39

32

08

6e

5-6-17-9-5

3965

(+)

(+)

202

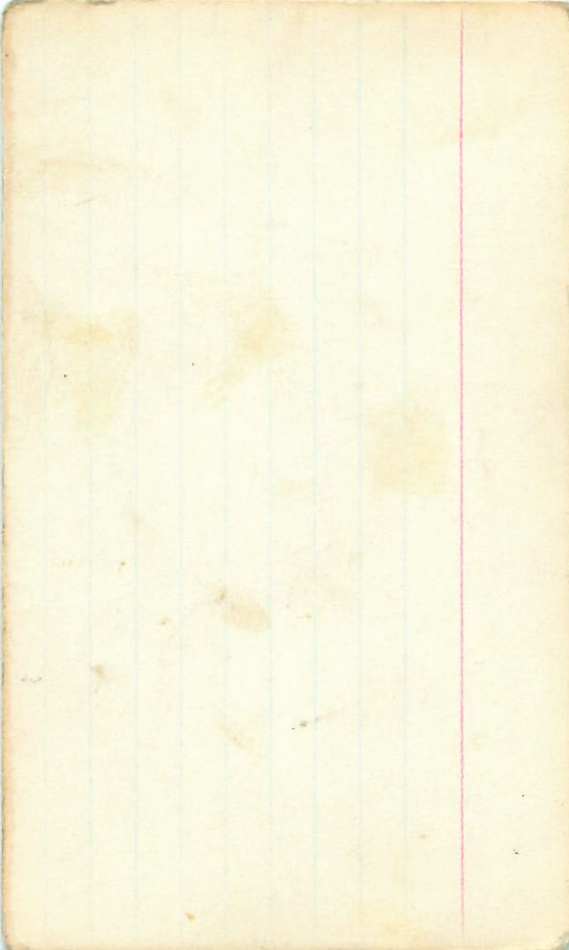
5.64	364	189	333	2588	13 Mar 71
5.66	341	204	337	2.615	9 Apr
5.65	355	197	330	2.602	

142

5.64	336
5.67	332
5.68	334

873	-428	2 Jan 76
983	-482	6 "
878	=480	

5.68	373	153	480	1484
------	-----	-----	-----	------



2022

5165-344 901-445 2.127 246172
2.107 ✓
5165-334 878-470 - 2.1526

5165-344 913-432 2.130 21971
2.133 246172

5166-344 900-455 2.130 ⑥

434

5165
2780 10.248 246172

2023 05 46 45 -54 22 6.17 +140.145

VV RR

6.19 +143 1434 -608 11.16m 77

6.20 +132 1436 -613 28'

6.19 +137 1435 -606

869

5.40 +0.99 T 4.5m

544 +6.503 15m

543 +6.50

2037 05 48 34 -44 53 6.38 +128 122

✓
✓ R R

6.39 +46 1324 -534 23 Jun 77

6.39 +050 1320 -527 8 Jun 77

6.39 +048 1323 -530

582 +0.408 15 Jun 77

5.67 +0.413 5 Jun 77

5.74 +0.400 4 Jun 77

5.78 +0.407 (3)

(A)

2035

✓✓

AMW

S Sep

①

②

3.72 + 100

35364

5 50 13 -20 52

3.76 -120²³ 1080²⁰ 80²⁰ 352

~~3.77 -142 -1080 -401 1080 177~~

3.75 + 99 + 70

~~3.78 -115 1044 -444~~

97/100

~~3.77 -123 1032 -370 2 Jun 77~~

~~3.78 -99 1033 -405 6 Jun 77~~

3.79 -115 1046 -384 9 Apr 77

③

3.76 -125 1055 -390

2267

[6-11-126 1043 -425] + 200 + 17

35091

5

39

28

-80

31 5463

$$5.65 + 60 + 106$$

$$5.65 + 60 + 106 \overline{) 3 \text{ Jan } 72}$$

$$5.65 + 60 + 106 \overline{) 7009}$$

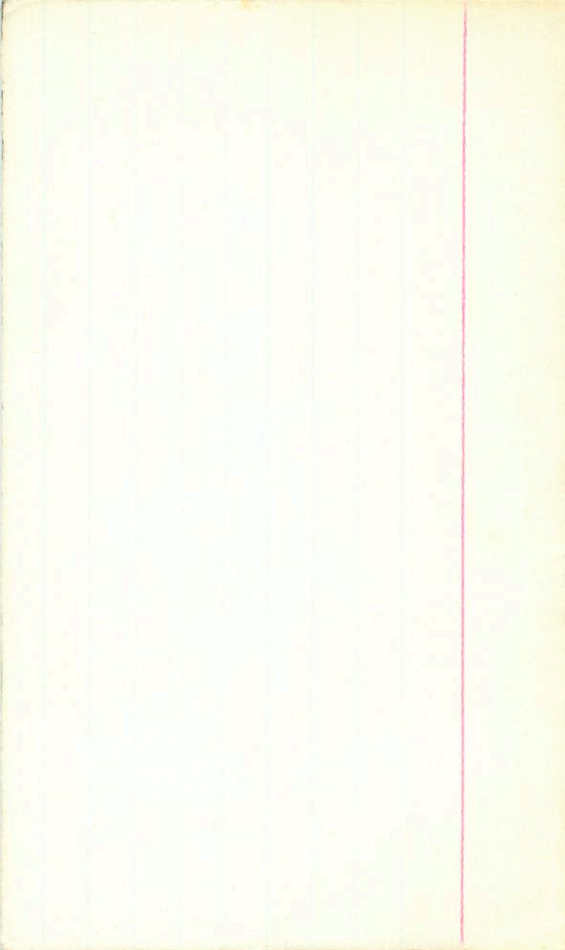
5.66 MMS 5.44 + 0.19 (3) 17 Dec 71

MMS

19 Jan 72

MMS

20 Jan 72



2036 05 50 31 22 57 4.16 +120 100

✓
✓
6.18 -105 1178 -458 31 Jun 78

① 6.15 -115 1205 -481 30 June 78

6.19 -105 1159 -450 8 Dec 77

6.18 -102 1152 -429 9 "

6.18 -108 1174 -455 5.79 +0.327 15 Jun 78

6.15 409 5.74 +0.323 3 Jun 78

① ② 5.79 +0.331 18 Jun 78

5.77 +0.327 ③

2037 05 51 15 +01
+81 51 478 +138 1021

✓ 477 +119 1449 -610 28 pm 1 Dec

478 +119 1430 -587 26 Dec

478 +116 1440 -602 27
8CH 814 814
8CH 814 814 = 606

(D)

848 665 310
819 818 148 1056 480 2186

848 673 299 + 469 6000

3186 821 626
-140 328 092 435

2040 ✓ 05 50 09

-35 47 311 + 116 1020

3.13 -6 1316 -458 41125 24"

3.14 -19 1328 -498 90007

3.14 -12 1322 -488

~~355~~

~~358~~

356

351

+32 - +415

+0.419 35

+0.385 1000

→

262

+0.399 21005

$$\begin{array}{r} +38 \\ \hline 4.50 + 1.10 \end{array}$$

\checkmark 2042 5 49 22 56 10 4.50 + 1.10
 \checkmark

4.66 2732
 2732

0.6

448 - 038 + 1225 - 477 1520076
 1520076

448 - 057 + 1222 - 486 22 "
 22 "

$\frac{448 - 047}{7224} = \frac{401}{7224}$

675 471 427

Oct 11

609

30
514 144 91 Oct 16

(51)

225
418 + 20 = 438
412 + 21 = 433
414 + 21 = 435

39587

2047

52

436-305 858 -513 26 Dec 76
 437-328 893 -508 28 " "
 436-324 858 -531 29 " "
436-320 858 -515

(917)

1007

5057
5057

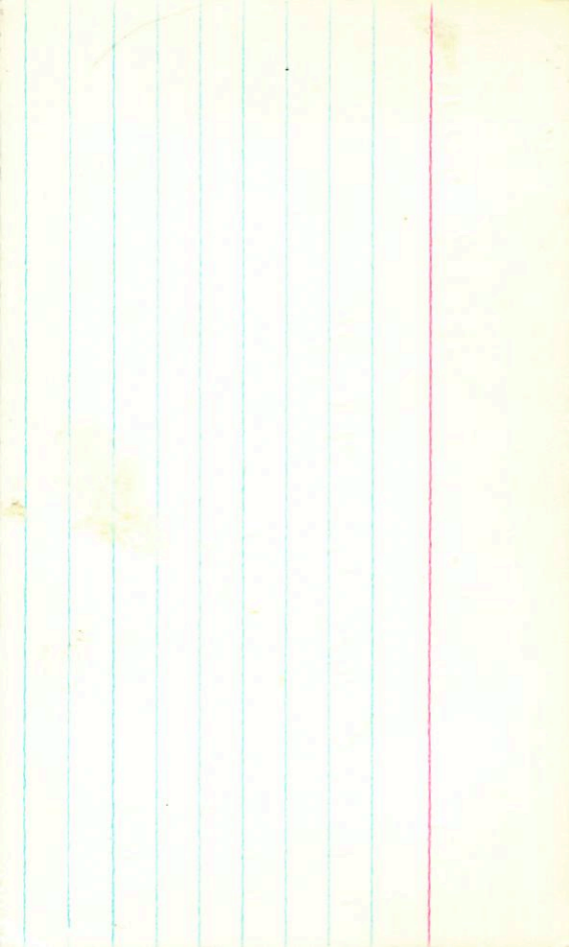
(3)

436 398 168 393 1461

384 145 095

(287) (318)

252



2045 ✓
~~1875~~ 5 53 05 +10 35 6.6 69 II

6.17 +145 1289 -574 259180 40"
6.15 +212 1280 -568 26"
6.16 +204 1286 -573

935 · 528 333
809 145

5546 +0.539 60min

5740 +0.518 22 pm 80

535 +0.444 23 "

5.35 +0.506 (2)

524

3478 +RI RRD

2049 05 50 22 -52 07 516 + 99 070

✓

RR

5.19 -130 1111 -415 11 dec 70

5.19 -131 1103 -418 23 "

5.19 100 1107 -416

598

4.68 + 0.325 47 min 15
75
4.76 + 0.324 19 min 25
4.74 +

2051 05 53 00 + 03 14 60

✓
RR

~~1 more~~

$$6.30 + 511423 - 500 \quad 6.30 + 1.29 + 1.46 \text{ (2)}$$

$$6.31 + 571415 - 497 \quad 25 \text{ Dec } 77$$

$$6.31 + 371449 - 519 \quad 29$$

$$6.30 + 541420 - 500 \text{ (2)}$$

$$5.75 + 0.434 \text{ (2)}$$

$$5.75 + 0.436 \quad 4 \text{ Jan } 75$$

$$5.75 + 0.433 \quad 3 \text{ Jan } 75$$

$$5.64 + 0.47 \quad 20 \text{ Jan } 72$$

$$5.67 + 0.465 \quad 27 \text{ Jan } 72$$

$$5.70 + 0.58 \text{ (4)}$$

2053 5 51 4/6 -87 38 . 5.63+1.05

✓ VRE

12^m 19th apt

5.64 -52 1157

-464 212005

5.64 -52 1166

-455 244007

5.68 -55 1113

-486 20

~~5.75~~

Amful

5.64 -52 1162 -460 Ⓞ

LEN

5.12	+0.346	14078
5.16	+0.342	15000
5.14	-11	344

2058 5 52 00 -38 32 6-70+10F

✓RR

"²"
" "

6.70 -59 1202 -509 24ln 97

6.70 18 57 8.9
6.70 18 57 8.9
6.70 18 57 8.9
6.70 18 57 8.9
6.70 18 57 8.9

6.59

6.19 +0.347 5ln 77

6.18 +0.349 7ln 75

6.16 +0.348

2057 05 53 33 +070 58 6.10 110

✓ 589 +83 1440 -588 242687

✓ R/R 6.01 +27 1449 -600 251477

6.00 +83 1423 -572 29''
6.00 +91 1434 -587

1000

5.47 +0.4325/25

5.43 +0.4415/25

5.44 +0.436

2062

05 48 16

-72 43

6.52 + 1.08

✓ 1212

6.55 - 73 1215 - 431 26 (Jan 77)

6.55 - 64 1208 - 438 27"
6.55 - 68 1212 - 434

~~6.5~~ 6.53

Feb

6.11 10334 156 (Jan 73)

6.03 10334 5 (Jan 77)

6.05 10344 18 (Jan 78)

6.06 11339 (3)

ⓧ

nothing above (21) ✓ 18.03

2067.93 5 04 28 713.56 6.63 + 0.65 + 0.16

6.65 ~~317~~ 914 - 481 do Mar 87 (36)

6.58 ~~306~~ 921 - 508 9 April 77

6.70 ~~277~~ 918 - 408

13 Mar 76

6.64 - 312 918 - 495 (2)

12 Mar 76 + 0.28

6.55 + 0.225 (2 Mar 77)

July 478 190 400 ~~1548~~ (2)

[8.70 + 0.217] 10 Mar 81

6.38 0.217 → 220

6.36 0. 0.223

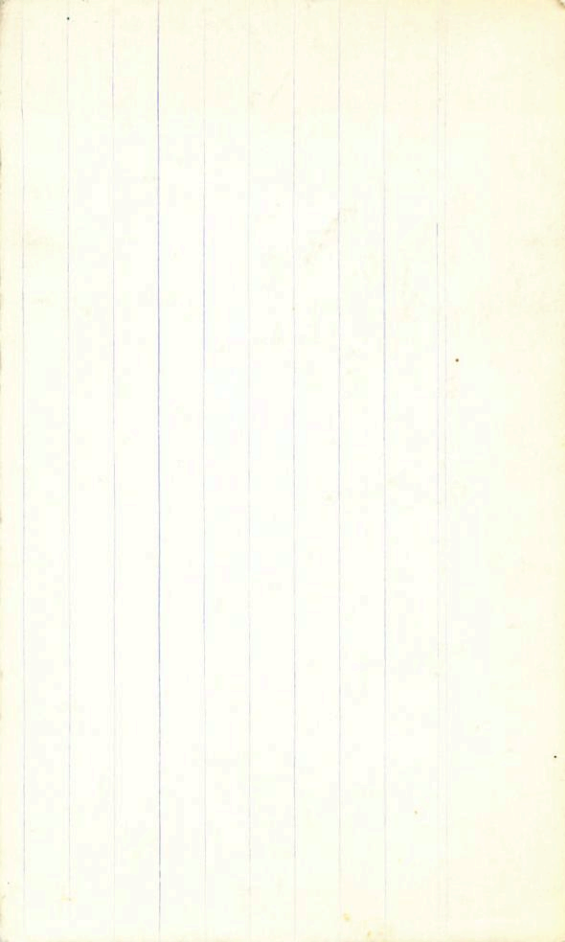
1573 136 Mar

1535

410 195

177 497

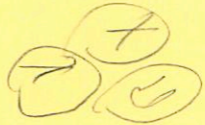
(18) ⊕ 6.61 411 205 339 2586 4 Mar



345 2069

05 52 42 -42 56 6.55 +137

✓ R R



6.49 +104 1490 -509 242277
 6.57 + 99 1197 6541 1014 6
6.53 +102 1494 -515

831 4
 182
 492 -425 445
 582 -448 194
545 +104 ②

5.82 +0.443 10 Jan 77
 5.81 -11488 10 Jan 77
5.82 -11488

433

2065

05

53

39

-11

47

2070

05 54 21 -04 37 5.88 +1.18

✓
RR

5.88	-11	1333	-488	25 Mar 77
5.88	-20	1340	-489	29
<u>5.88</u>	<u>-16</u>	<u>1336</u>	<u>-488</u>	

5.40	+0.37	3/25
5.39	+0.374	1.5 Mar 77
<u>5.40</u>	<u>+0.374</u>	

2072 05 51 87 -57 09 5.93 +0.16

✓ RRR

5.46 -299 948 -290 B511u-77
5.54 -306 954 -294 2511u-77
5.56 -303 951 -293

191

542 410 232 503 80

706

[.8.04 +240] 17/28
5.64 +259

Ⓟ

554 +230②

5.59 +0.234 4/28
5.62 +127 10/28
5.60 +120

204

2073 05 51 15 -64 03 635+86

100+03

✓VRP

6.07-182 1045-323 25.0.77

6.38-174 1045-353 26.1

6.38-180 1045-363

535

5.53 + 0.285 up 75

5.57 + 1.296 up 75

5.57

10211
40020
Plant 5 90 + 113 + 111 084 -

2076 178 5 55 26 + 11 31 59665

550 - 626 1303 - 444 509 16 Mar 87 225 4909 13 pds 27 lbs

586 - 24 1805 - 539 26 lbs 476 5743 + 0.34 76

587 - 30 1291 - 514 29 "" 5.40 + 0.36 29 ""

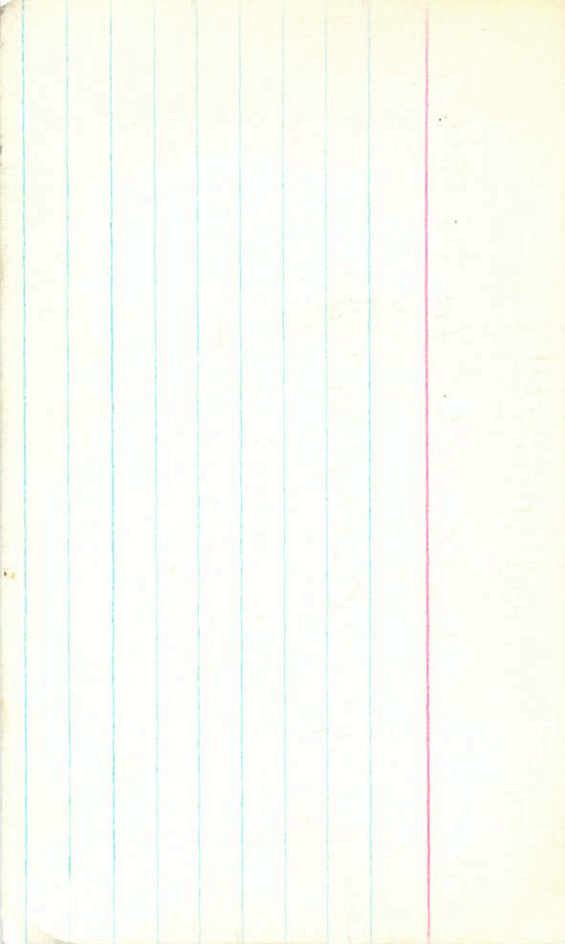
587 - 42 1294 - 497 29 77 5.57 + 0.36 37 77

589 - 44 1300 - 532 29 5.40 + 0.35 33

590 613 295 54 339

590 + 339
590 340 -
590 350
591 340 0050

more



2083

05 53 36 -50 23 6.52 +0.90

✓
✓

RR

6.54 -171 1061 -410 21981

6.55 -175 1051 -395 244277

6.54 -162 (1037) -393 25"

~~6.59 -164 1045 -399~~

6.60 -164 1054 -400 3 Shubs

6.57 -168 1055 -401 (7)

6.10

(6.06 +02944) Jan 11

(6.13 +0309) Nov

6.10 +0301 → 310

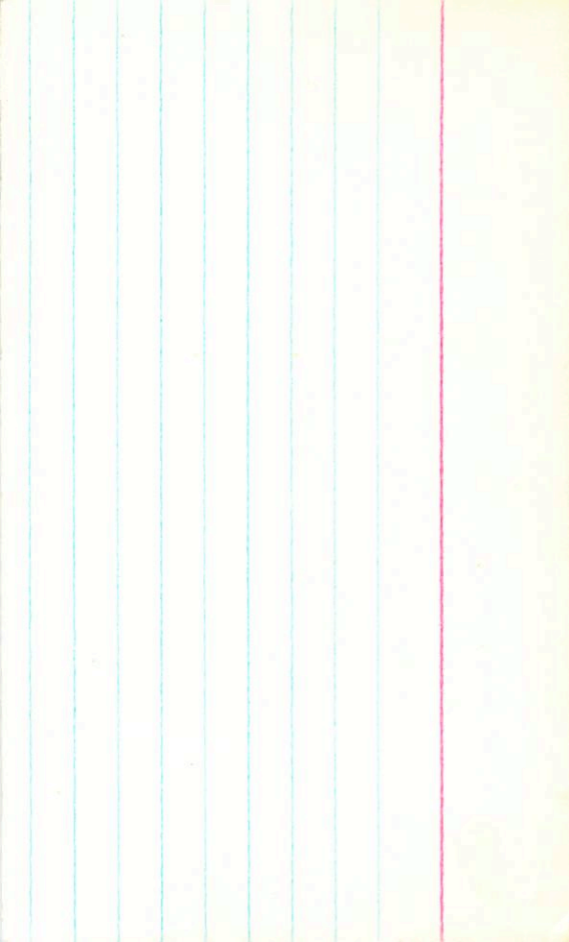
302
302
306

(RF, B-F)
 40105 172 Grant 1440 6.30-7.24 52
 2093 5 53 41 -50 22.5 6.52 +50
 Care

6.55 -144 1056 -414 6 Jan 77
 6.64 -159 1071 -401 29 Dec 76
 6.56 -169 1053 -402 2 Jan 76
 6.60 -157 1060 -416 11 0.79

6.54 8.59 320 805 2224 ③
 370
 312
 312
 6.15
 312
 312
 312

2114



1632

HD401~~4~~⁰⁵

5 53 25 -50 23 6.51 +90

~~179~~
~~6.15~~ 544 324 501
+0.31 (5) ~~484~~ ~~3402~~

~~5.53~~ ~~18 Dec 1966~~
6.27475 26 Jan 69

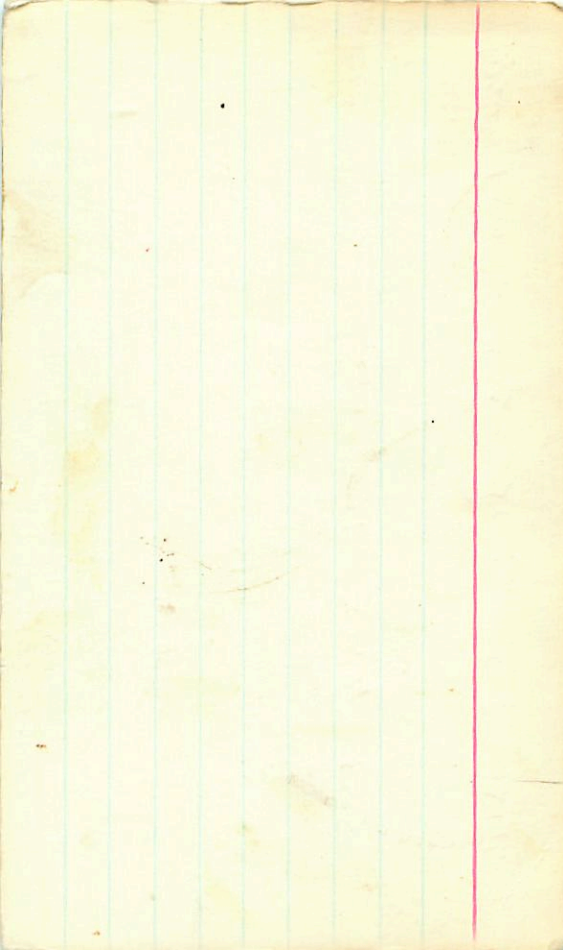
6.35 +0.29
~~6.20~~ +0.295
6.25 +0.30 (3)

305 long
 $\mu = 6.05$

6.57790 + 63 405
6.52 + 90 - C
6.55 + 86.5 - 10.58 3/4
6.55 - 10.89 - 10.60

R 8.7
6.15 6.57 17 Dec 71

~~6.53~~ -167, 1054 -408 14 Oct 71
~~6.54~~ 175, 1068 -411 3 Nov 71 (60)
~~6.54~~ = 151, 1061 = 410 (2)



40187

grant

5.51 + 0.35 ②

2086 5 58 11 -22 50 6.01 dnd

5.56 -48 1267 -467 31 Jan 83

5.57 -28 1238 -464 6 Jan 77

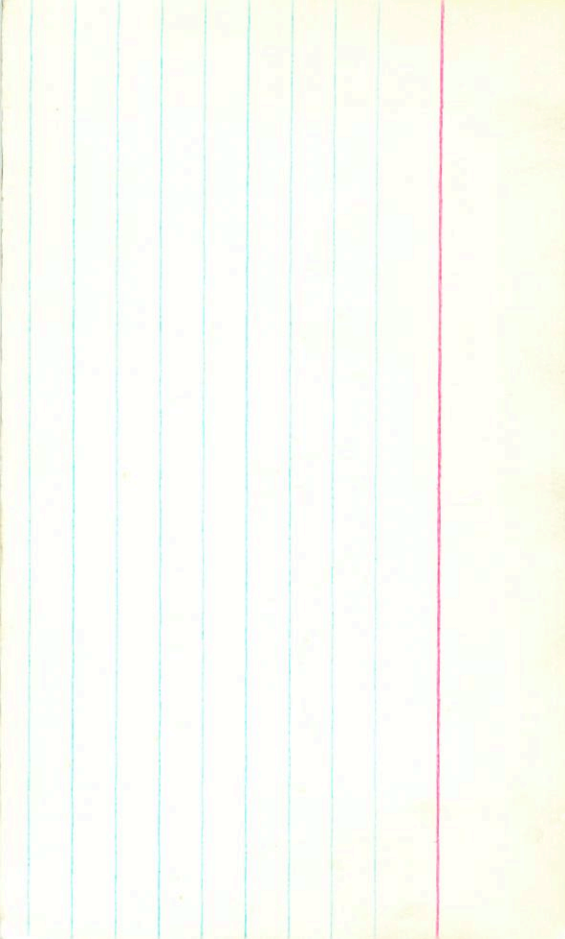
5.58 -52 1252 -465 2 Jan 77 5.44
5.59 -50 1260 -466 ② 5.44

384
364
371
341

5.58 684 484 443 2772 ②

1 RT
~~RT~~
~~RT~~
~~RT~~

7.76
2.84
2.87
+0.357 10 Jan 81
+0.432 17 Jan 83
+0.441 18 Jan 83



2087

05 54 42

-37 07

496 + 11

496 + 1.105 + 1.07 (2)

✓

4.55 - 62 1310 - 490 2x 4.77

4.55 - 61 1307 - 477 2.5"

4.55 - 62 1308 - 483

659 848 426

325

✓ 846

482

4.50 + 1.36 35.26

30.89
✓

✓ 6.84 + 0.301 18.481

361

2090 05 55 36 -23 13 6.41 100

✓ R R

$$6.39 - 79 \quad 1178 - 486 \quad 238.70$$

$$\frac{6.39}{6.39} - 79 \quad 1178 - 444 \quad 24''$$

$$\frac{6.39}{6.39} - 79 \quad 1178 - 450 \quad \textcircled{2}$$

$$6.41 \quad 147 \quad 1$$

$$5.89 \quad + 0.3563 \quad \text{per } 7$$

$$5.79 \quad + 0.3554 \quad \text{per } 75$$

$$5.79 \quad - 35.6$$

2093

05 56 43 +01 14

6.21 + 1.45

✓ R

6.21 + 1.77 1555 - 522 25.827

6.16 + 1.77 1543 - 495 29 "

6.18 + 1.76 1549 - 509

582
D.449 + 585 barium

5.36 + 0.56 26.2075

5.49 + 0.46 3.4675

5.42 + 5.53

2097 05 56 58 -1 00 6.21 +114

✓ R 6.22 -24 1334 -501 28 Jan 78

6.23 -53 1345 -493 25 Dec 77

6.21 -38 1324 -509 29 Jan 78

6.22 -33 1334 -505 (2) +114 13 Jan 78

349

5.59 249

~~5.59 341 5.68 4036 26 Mar 75~~

~~5.59 352 5.76 4361 3 Jan 78~~

~~5.72 4310~~

5.76 4361
5.59 3560

(A) (B)

2058 / 05 55 55 -31 58 6.43 +1.08

✓ RR

6.46	-68	1268	-513	1747.9
6.46	-65	1237	-458	2410.9
6.46	-76	1260	-507	1519.95
6.46	-70	1255	-513	

Refuse

[9.36 + 8.88] 18.24

6.50 34

①

5.99	+0.325	5.665
5.96	+0.323	5.637
5.58	+0.324	5.256

375
5.68 375
5.56 375
5.55 375
5.55 375

5.55 375