

✓ Who R I cent ✓

Boathouse Lake On=on

216655 27 58 48 -48 38 7.08 7.54 +01 6.71 +46 -05

⑤ 95"

④

207	-350	889	-460
708	-367	876	-458
208	-356	892	-821
711	-355	887	-511
708	-357	884	-504
708	349	404	2149
670	410	876	-401
670	-421	875	-436
671	-413	867	-436
673	-410	867	-408
671	-415	872	-420

19 Aug 77 20 Aug 77 21 Aug 77 19 Aug 77

2.143 50 out 79  
2.140.6

6.79 +0.2 8.18 Aug 77  
6.75 70.19 13 Aug 77  
6.75 70.19 ②

⑤

670	-421	875	-436
671	-413	867	-436
673	-410	867	-408
671	-415	872	-420

19 Aug 77 20 Aug 77 21 Aug 77 19 Aug 77

2.177 50 out 79  
2.172.6

6.48 70.15 14 Aug 77  
6.48 70.145 13 Aug 77  
6.48 70.15 ②

6.71 0.288 147 4912653 2.172





④ ✓ ✓ Abn R R 792811

218153 23 04 12 +25 53

~~762 +5 1153 -523 11/11/77~~

~~771 -5 1142 (490) 10/11/75~~

~~762 -13 1193 -550 2.11.75 25 Aug 74~~

763 -12 1184 -560 2.10.75 26 Aug 74

762 -12 1191 -555 2.11.03

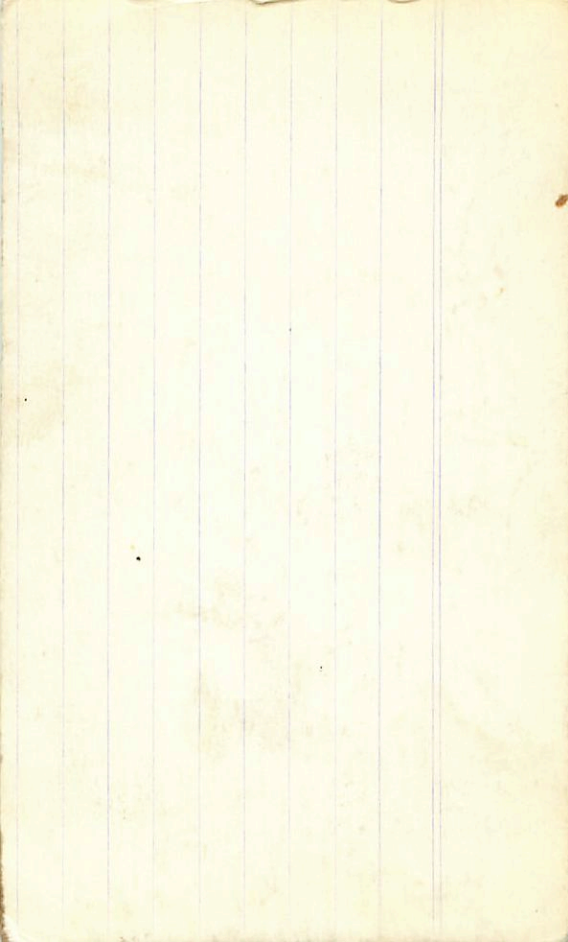
7.11 +0.40 19 Aug 78

189 11/10/78 204330 ✓

7.07 +355 4 Nov 75

7.09 +700 (2)

(189) (157) (111)



D Y Puy

23

07

45

+17

06

2.95-10.55

10.58 -450 831 -127<sup>93</sup> 2.283 07:15 8 Aug 74

10.05 -566 890 +100<sup>27</sup> 2.373 06:40 9"

10.27 -544 867 +65<sup>91</sup> 2.347 07:25 10"

10.62 -466 853 -117<sup>103</sup> 2.263 07:00 11"

0

5

12'

219116<sup>-196241</sup>

23 12 25 -17

28

9.27 + 1.00



8.54 + 0.345 ②

9.22 + 103 + 0.54

8.89

8.74

8.89

9.31

-126

1137

-632

16 Aug 80

9.30

-125

1119

-641

7 Aug 75

9.31

-141

1146

-632

10 " "

9.31

-130

1132

-635

③

588

399

216

386

214

889

351

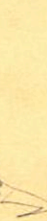
Do R

186

10.344 850.080

10.332 9.11

10.340





Also (P. 7)

9?

21940R

23

14

27

-29

59

6.52 + 108

101  $\overline{IV}$

6.54 - 073 + 1199 - 440 1300 + 75

6.54 - 067 + 1191 - 455 1400 + 75

6.54 - 070 + 1195 - 448 - 456

~~6.54\* 6.50 449 370~~

1-0

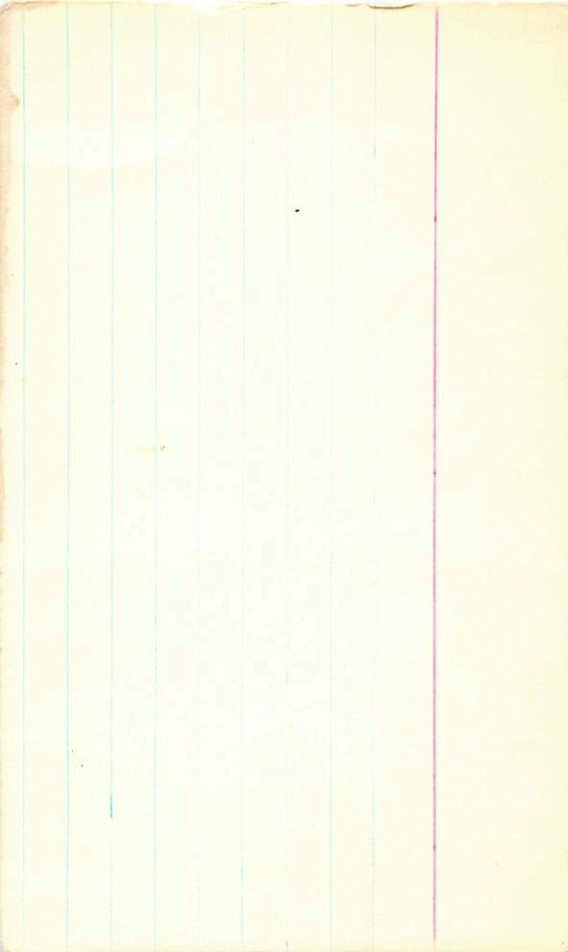
6.58

1-0

453

(3)

6.03 + 0.38 1400 + 75



8966 ✓ 23 17 55-13 34

507780

7 m 144

dim in a to B

① F. H. H.

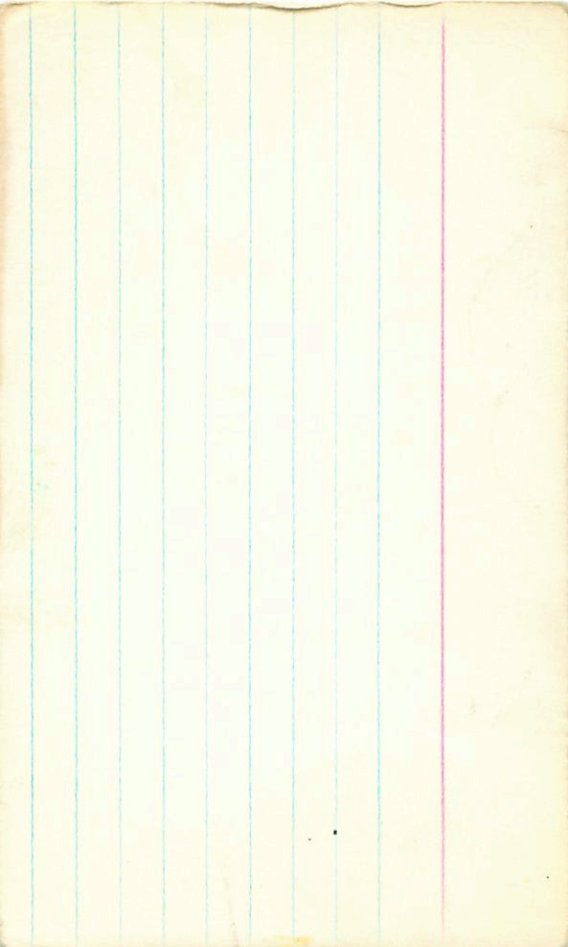
6.20 - 227 989 - 440 200078

✓ ✓  
 (7) ✓  
 Alt. RF 1  
 220127 23 20 18 -49 37  
 10.15-10.66-0.05

(1+RS)

1+R

10.21	-245	+886	-604	13	cut 75
10.18	-239	+824	-505	14	cut 75
10.22	-240	+832	-513	31	cut 75
10.20	-239	+826	-509	2	
			-538		
473	106	349			
					→
				989	+0.315 262075
				988	+0.295 3014075
				986	+0.285 40303
				980	+0.2945477



✓✓✓ Acid

221170 23 28 12 730 17

266 + 108 + 555  
214 + 48

52 253 242  
767 + 13 865 - 280 24 Jan 76  
773 - 3 878 - 252 5 Sept 76  
774 + 24 857 - 286 6 "  
771 + 14 853 - 279 9 "

773 + 13 863 - 286 (4)

773 738 139 629 (4)

200

222435

23

43

51

64

25

~~Albright~~

Rowley

58+94+038

8.09 + 0.32 18 July 77





8995

23

43

10

-18

24

5.25-10  
TO

(A)

(X)

5.25-723 854-136

5.25-781 862-119

18.25-175487

2.256 24/10/52



SX Pde

23

45

25

-41

41.5

(7.2)

(7.4)

BS	Age	23	47	38	-08	16	0.20 9-9.8
	5.56					715	05:10
	9.55					718	05:12
	9.53					719	05:14
	9.52					720	05:16
	9.50					721	05:18
	9.28	-547	924		+1	2266	05:45
	9.19	-550	897		+121	2.243	06:05
	9.23	-548	900		+105	2.286	06:25
	9.24	-551	910		+73	2.260	06:40
	9.33	-534	896		+58	2.258	06:55

2350  
55

1163	744	-534	857	-145	2.250	05:55	158425
	740	-542 <sup>155</sup>	862	-713 <sup>409</sup>	2.260 <sup>2.759</sup>	05:48	" "
	730	-548 <sup>149</sup>	868	-100 <sup>571</sup>	2.264 <sup>2.763</sup>	05:45	" "
	738	-564 <sup>172</sup>	877	-74 <sup>453</sup>	2.284 <sup>2.787</sup>	05:40	" "
	730	-566 <sup>130</sup>	876	-69 <sup>453</sup>	2.295 <sup>2.760</sup>	05:37	" "
	720	-693 <sup>593</sup>	886	-13 <sup>911</sup>	2.318 <sup>2.827</sup>	05:32	
	718	-608 <sup>106</sup>	906	-3 <sup>924</sup>	2.344 <sup>2.754</sup>	05:25	
	722	-824	866	-163 <sup>750</sup>	2.287 <sup>2.754</sup>	04:55	

SX Phe

7.07	-620	893	+37	2.353	04:53	7.05-612-895+23 2.348	
7.10	-605	897	+9	2.343	04:57		
7.23	-581	883	-40	2.299	05:03	7.25-575-880-542245	
7.30	-569	876	-68	2.241	05:06		
7.35	-549	850	-92	2.275	05:09	↓	
7.36	-542	865	-114	2.263	05:13		
7.40	-532	856	-120	2.248	05:15		
7.43	-528	859	-141	2.245	05:19		
7.45	-514	845	-148	2.245	05:23		
7.46	-517	859	-179	2.243	05:27		2264178

04:55

05:05

99 25 - 5 37

G27381A 23 50 54 - 8 211

26" 210°  $\pi =$  <sup>4.51</sup>

12 75° G

~~9908 9889~~  
~~-1353 1487~~ +119

+118 +231 G

Jesus

(110) 9875 9957  
-1575 0927

16.18 -017 (4.2)  
4.17  
11.67 +1127

+013  
+52  
0125  
4.51

1183 1102  
0702 ~~0789~~  
+265  
0116  
467

G273BI<sub>B</sub>A

23 52 30 -8 11 12.0 +2

⊗ ⊗ ⊗ ⊗

North

IB

16.4 -1

26" 200°

11.12-224 1017 -471 2.800 60"

11.12-221 1009 -472 3.800

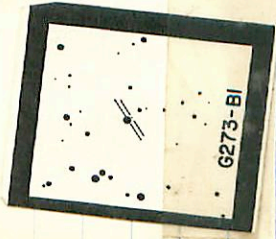
11.08-224 1015 -482 2.099 4.800

11.11-222 1014 -475 2.099

450 278 434 (2.565)

425 330  
195

45.7

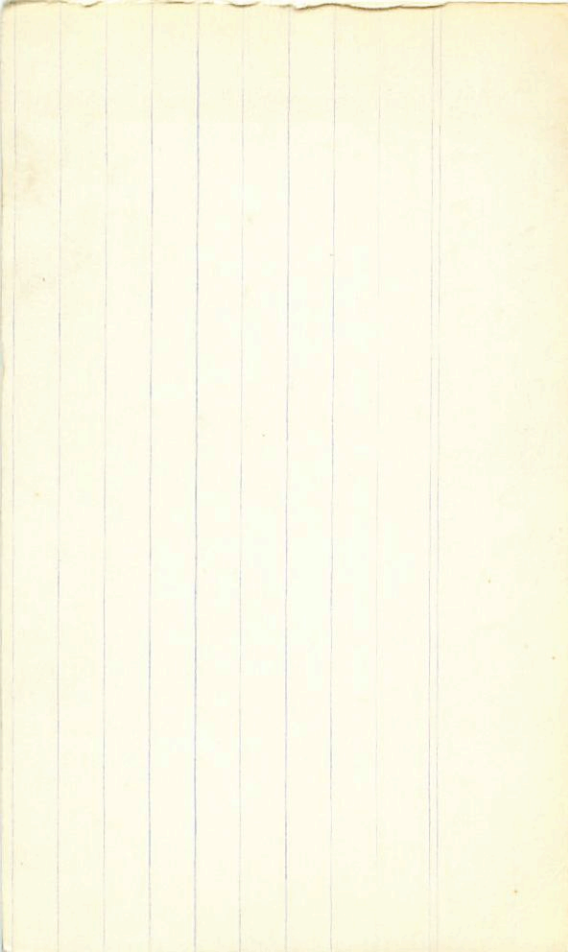




✓ FRT only

22869 23 51 49 15 52 + 54 15 52 + 54 15 52

7.18 + 0.345 543.04 8.12  
A



224022

9046 ✓

23

53

21

-40

37

+ 1P ✓

✓

6.02 + 87 + 11

(58)

6.07 - 344 873 - 484 17 Aug 77

6.06 - 358 884 - 484 19 Aug 77

6.06 - 351 878 - 486

580 + 0.185 18 Aug 77

865 + 0.19 20 Aug 77

584 - 70.19 (2)

(long)

355 ✓

153

474

150

456

316

362

6.02

2626

~~221356~~

8981



~~650 1053 2016~~

224817

12.6595

23

59

55

-11

56

-7.1

8.560

(X) (X)

8.41

-343

863

-497

2.121

28.102

8.41

-324

837

-484

2.128

9.017

8.41

-327

841

-487

2.123

11.187

8.41

-330

844

-489

2124

(3)

1446 - 72

23.95  
~~100.0~~

.456  
~~78~~  
3.5  
-7.1

74-539-

23 47.7 -48 33

223171

2481648

6.50-3.04 937 -434 2.121 24648

[9.00 +0.570] 27648

[9.00 +0.550] 26648

APLan GF ①

1106 + 62  
1111 + 63

1108 -309 886 -508 2.106 400870 1.3  
1124 -313 876 -495 2.149 6.11

GF ⑤

10.99 -342 907 -501 2.168 400870  
10.99 -318 859 -481 2.153 6.11

Atlas B

7.1 701

$$\begin{array}{r} 2.08 - 671 \quad 846 \quad -54 \quad 2.305 \quad 4070 \\ 2.07 - 664 \quad 841 \quad -53 \quad 2305 \quad 5'' \\ \hline 2.08 - 668 \quad 853 \quad -56 \quad 2305 \end{array}$$



V369 set ✓✓✓  
174553 18 50 05 -06 23 9.25

0.223

9.2-9.3

✓✓✓  
9.38-343 878 -54 2.237 03:00 8 Aug 78  
9.39-381 868 -95 2.227 03:20 9 Aug 78  
9.42-342 886 -74 2.222 04:35 10 "  
9.43-378 882 -96 2.245 02:45 11 "

W.



F.

④ 7 35 10 - 00 05

over WR

60778 34 28 04 210+0.10

9.12- 0.49 14793 130397 2.832 132m76

9.15- 0.88 141 1321 2.805 132m76

9.09 +0.085 -0.122 1.268 2.823 4 Jun 71

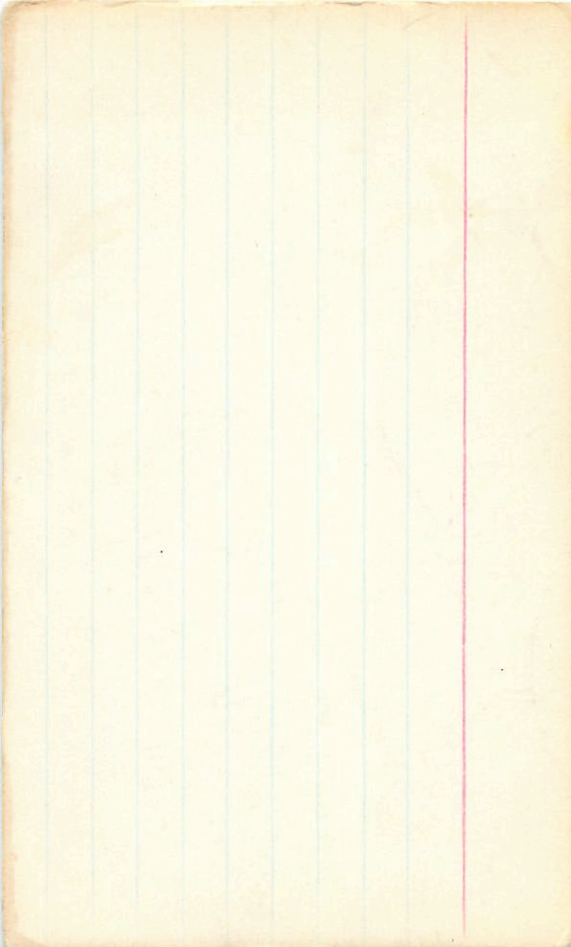
9.08 +0.64 +130 1.258 2.814 9 Jun 71

9.11 +0.78 135 2.814 ③

9.09- 641 880 349 2.319 10 Apr 77

9.15- 606 825 388 132 (2.395) 132m77

-621



60 225

9.12 -623 874 +384 2.338 246452

9.12 -624 872 +385 21977

9.11 -621 887 +385 2.340 256452

9.12 -623 876 385 2.334 9

070 151 1321 2852

036