

Net m. ysp

184700 19 34 14 -00 18 8.88 +67 +9

184700 19 34 26 2.57 +67 +185355

8.88 +65 +10 18  
8.79 +65 +09 17m. 5

8.83 +67 +09 P

~~8.87 +66 +09~~  
8.82 +65 +055

8.73  
8.74  
8.75  
8.76  
8.77  
8.78  
8.79  
8.80  
8.81  
8.82  
8.83  
8.84  
8.85  
8.86  
8.87  
8.88  
8.89  
8.90  
8.91  
8.92  
8.93  
8.94  
8.95  
8.96  
8.97  
8.98  
8.99  
9.00

8.23  
8.24  
8.25  
8.26  
8.27  
8.28  
8.29  
8.30  
8.31  
8.32  
8.33  
8.34  
8.35  
8.36  
8.37  
8.38  
8.39  
8.40  
8.41  
8.42  
8.43  
8.44  
8.45  
8.46  
8.47  
8.48  
8.49  
8.50

8.51  
8.52  
8.53  
8.54  
8.55  
8.56  
8.57  
8.58  
8.59  
8.60  
8.61  
8.62  
8.63  
8.64  
8.65  
8.66  
8.67  
8.68  
8.69  
8.70  
8.71  
8.72  
8.73  
8.74  
8.75  
8.76  
8.77  
8.78  
8.79  
8.80

8.81  
8.82  
8.83  
8.84  
8.85  
8.86  
8.87  
8.88  
8.89  
8.90  
8.91  
8.92  
8.93  
8.94  
8.95  
8.96  
8.97  
8.98  
8.99  
9.00

8.65 +0.23

184700

(R)

(lead) (Y)

(R)

Subsum  
7p

G 92-11 ✓ 19 39 26 -00 18 8.82+66+10

14 ✓ 19 34 42 +00 02.5 2.57+67+15

R = 257  
892-

R-I = +03

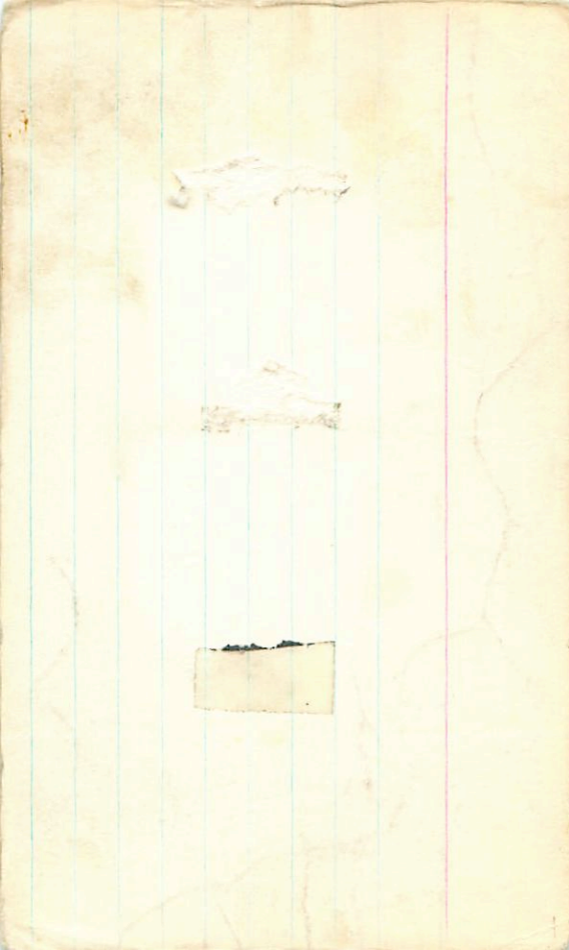
(IP) (4)

(NR) (6)

8.93 -301 897 -410 13 Oct 75  
 897 -252 492 -280 31 Oct 75  
 981 -255 480 -412 1 Nov 75  
 944 -296 486 -400 21 24  
 3.58 -258 931 -465 24 28 Aug 80  
 3.55 -283 416 -404 13 Oct 75  
 7.57 -264 421 -432 31 Oct 75  
 3.53 -289 407 -437 1 Nov 75  
 3.55 -280 416 -437 450 (4)

\* 7423 175 440

\* 7430 192 444



G 23-7

198 423

010?

→ 76.2

19 34 45 101 47 1004 + 96

(+) (x)

10.02 -70 873 -485 235 (17) (60)

10.04 -72 868 -483 255 (17) (60)

10.03 -71 870 -484

649 145 424

113-110-18

324

(+) (x) (x)

+4.15

9.61 +0.401 24 (17) (87)

9.51 +0.403 50 (17) (87)

9.56 +0.402



+1603924

(232078)

✓

79

37

15

+16

45

-390.5

Aug 8.87

+674

1147

-374

1897

+674

2571

1180

-431

749

9 Aug 5

880

+674

1554

1164

-401

763

(2)

2

(738+0865)

Prof 61 898.04

7.65

4,160

861+202+209

Esq. Mrs. O. S. Synken-Bell, S. and S. Synken, A. D.

1962 Ap. 5 186, 718

42014412 14 46 20 -42 04 103

V38554

10.46-644 746-782 2012 30000

10.29-648 764-842 2045 40000

10.40-635 766-855 2021 28000

10.35-629 773-808 2012 27000

07:35

04:00

04:40

42



186222 19 46 30 -41 29 8.6 P30

(+)

41-51

$\begin{array}{r} 874 - 414 \overset{-419}{\phantom{000}} \\ \hline 460 \end{array}$

65

872 - 342 = 530

2.184 42008

871 - 425

877 - 366 = 511

2.140 250054

871 - 414

904 - 357 = 547

2.154 180094

872 - 414

872 - 355 = 517

2.182 (3)

186630

14 45 55 -41 11 8.5 A02

-41.9187

9.39 -608 898 +31 2.351 3 NOV 83

9.40 -607 886 +32 2.375 4 NOV 83

9.40 -608 892 +32 2.348 ②

HR 2524 19 48 55-25 34

N 7005 ✓

6-05

⊕

2A

DR ✓

2.745

184 186 803

606-514 914-117 14 Sept 78 2.029

605-521 908-04-21 Sept 78 2.249

✓ ✓ J#R each 1 mre  
188268 19 53 00 + 1 53

E 840-186 1135-473 27 Apr 77  
895-199 1146-475 29 " "  
890-191 1130-455 12 Jun 77  
892-192 1137-482 (3)  
522 351 427 20 22-34

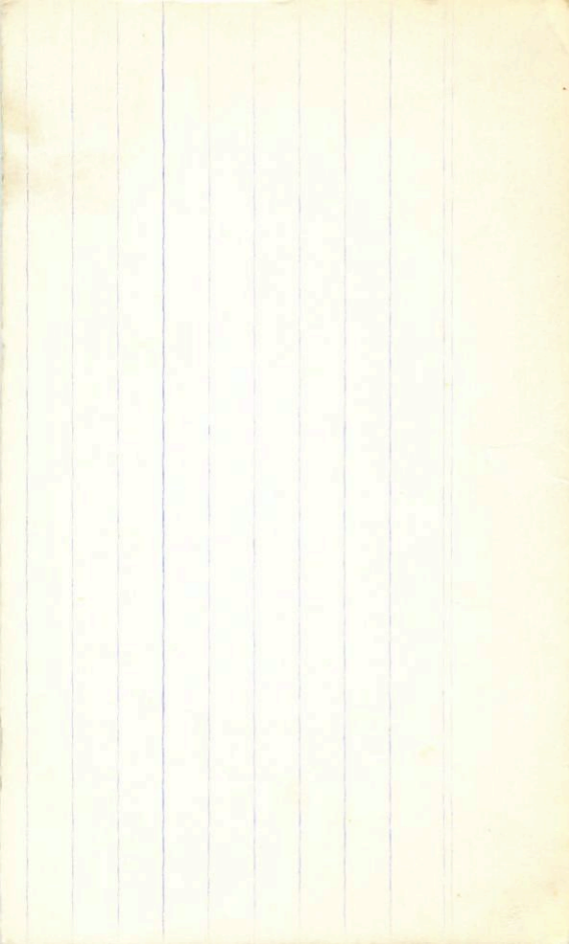
W 875-203 1096-467 12 Jun 77  
870-182 1080-456 27 Apr 77  
880-197 1113-497 29 " "  
875-195 1104-473 (3) 2171  
519 361 436

8.76 + 88 62  
8.94 90 65

160 "

8.63 + 0.31 3 May 77  
8.84 + 2.95 27 Apr 77  
8.44 31 30 Jun 64  
8.31 325 1 Aug 69  
8.46 + 31 4 May 64  
8.52 + 0.31 (5)

8.50 + 2.9 3 May 77  
8.45 + 2.95 4 May 69  
8.81 + 32 20 Jun 66  
8.40 + 2.75 30 Apr 70  
8.31 + 32 1 May 70  
9.43 + 0.30 (5)



Prove ✓

mail W 020

9.30 + 120 + 1.02

8.46 + 0.555 (3)

188807

15 56 15 -12 37

B 19 56 20 -12 36.5 (2"250)

9.30 + 42

1409 - 636<sup>2</sup> 25 April 77

9.27 + 35

1352 - 697 12 June 77

9.32 + 37

1348 - 659 22 July 75

Also 2122

1396

3502/3

2126  
8.50 + 0.554 (3)

8.53 + 0.535 (11/24)

8.52 - 0.532

120000

7 mail 3503

1346 + 0.548 21/8/81

B.53 + 1.564 (10/24)

13.50 + 1.550

29th 9/18

20

45

30

+16

02

12<sup>11</sup> { 4.20 + 1.04 + 0.47  
Bill + 0.44 + 0.05





7679 20 04 10 +19 55 5.08 +1.07

5.06 -099 +1225 -456 310075

620 478 453

4.60 +0.375  
den

9679

1245-1 20 02.9 719 515.3 9/10/1

5.06 -449 +1225 -456  
secit 444 31 Oct 75

620 472 453 2631  
5.10 +1.05 +0.55 2 Oct

5.08 +1.09 +0.93 7 Oct  
5.06 +1.11 +0.96 28 Aug 23

5.08 +1.07 +0.95

4.60 +0.375 21 Oct 23  
4.59 +0.375 18 Oct 75  
4.60 +0.375

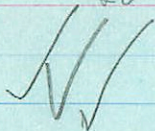
191046

20 05 45 +36 10.5 70 41.5

NO 14

Acc gp

84C



703 -20 1159-365 160170

0.91211

070 061

703 -30 1169-375 200170 "

703 0.698 0.416 0.542

192273 ✓ 20 16 44

-69 31

BT

24

324

2.63152

075 075 1309

8.85 - 763 796 - 266

8.90 - 752 786 - 264

8.87 - 749 758 - 794

8.87 - 757 791 375

8.87 - 754 791 - 777

-068 073 122 - 2.642

2.154 7mg 78 36 \*

2.174 9 " "

2.157 3mg 79

2.162 3mg 79

2.163 4

053

108

215

Ey + 037 10 8.7  
10 - 2.11  
11 10.85

110

9.71

1584

9.73  
2.7

7715 20 10 50 + 2645 5.44 + 1.44

5.50 + 140 1456 - 620 10 out 83

~~18/18~~

2

20 27 55 -17 53 4.76+37

play

211-468 865-258 2.183] 20 Oct 17

+2703773 20 29 44 +27 52

Dr 4 + 5.92

9014 4114 + 30.8

FDI

765 + 10

772 + 0.355 6 Sept 20

765 - 10.40

7  
+20 3723

20

89 26

+27

515 102TH

8.3

809 +114 +1065

60 conf 26

26 Jun 24

59.6

refic 04.04





Alexander, J. B. MSS + 30, 134  
1971

196.067

✓ ✓ ✓ No Books

18<sup>11</sup> { 6.02 + 6.2 0.18  
7.06 0.57  
25 27

20 35 43

6.52 -322 ✓  
6.44 -322  
6.51 -326  
6.48 -328  
6.48 -330

905  
903  
887  
888  
495

-365  
430  
-355  
-355

2.144 26 Nov 88  
2.144 21 Sept 88  
19 July 77  
16 July 77  
17 July 77

622 70.17 12 July 77  
636 70.19 23 July 77  
629 70.18

7.20 -304 ✓  
7.18 -331  
7.15 -320  
7.12 -325  
7.15 -325

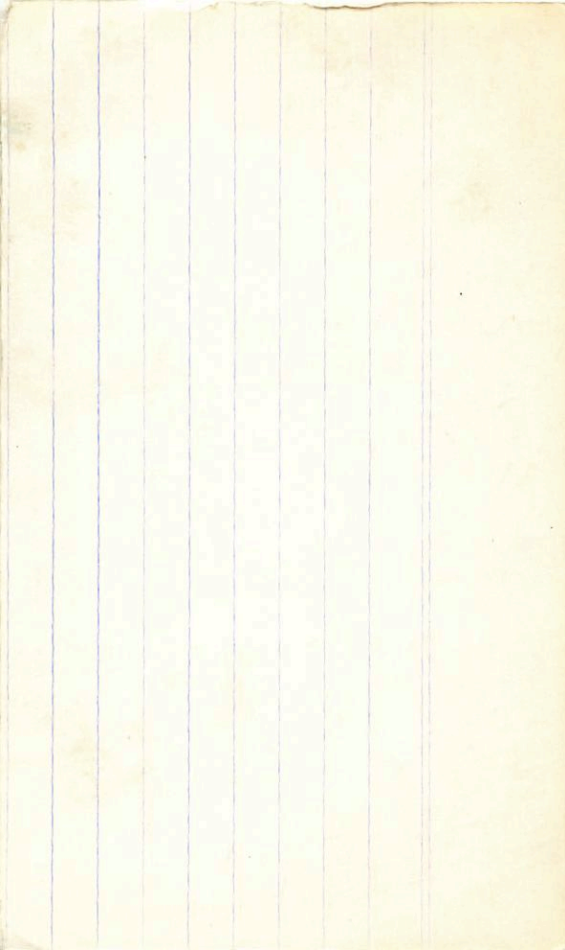
905  
899  
899  
914  
904

-364  
-349  
-323  
-405  
-383

2.140 21 Sept 88  
2.146 26 Oct 88  
16 July 77  
17 July 67  
19 July 67

6.90 70.195 12 July 77  
7.06 70.17 23 July 77  
6.94 70.19

2.143 4



-480<sup>000</sup>  
18714

PM

20 52 40 -48 17.5

10.68

0.51

-48<sup>0</sup> 10496 CSD

(X)

10.72 - 358 812 - 551 2.133

10.73 - 363 814 - 557 2.134

348 094093 352 2606

4/34

17.85  
July

1614 hp stat -25

9.4 Feb 72

148464

20 51 00 -48 11.5

(X) (X)

22 25 27

9.87 -371 910 -227 2.183 24548  
9.8 364 916 217 2.176 2680  
9.8 320 916 222 2.180

7957

20 57 55 - 9 26

ADSMY

6200 AG 8.57 746 ] 100" 112.0

C 9.57 +53 ]

(X) (D)

9.02 - 344 855 - 420 2.154 14 June 81

9.02 - 400 949 - 413 2.150 15 June

9.02 - 397 852 - 416 2.152

9.60 - 365 873 - 427 2.150 14 June 81

9.60 - 371 878 - 434 2.150 15 June

9.60 - 364 876 - 430 2.150

~~Chart~~  
ZZ Mic

20 ~~60~~ ~~60~~ 59 10

-42

45

0.067 days  
9.27-9.62  
23

+P

9.35	-563	917	-30	89	2.307	06:25	8 Aug 75
9.30	-586	891	+76	100	2.349	06:55	9 " "
9.31	-586	898	+53	91	2.330	07:05	10 " "
9.57	-540	887	-54	96	2.263	06:40	11 " "
9.31	-574	909	+42		2.309	01:00	27 Nov 78



8128 21 14 36 -15 15 5.24

5.24 + 16.75 + 18.14 + 22.57 + 27.24

(RT) ✓

[6.47]	+10.37]	96.8B
[6.44]	+10.93]	86.8B
906	928	

9.1



8118 (x) 21 21 45 +06 42.5 5.18 A2

28

✓ 69464

42" E 14' 5 S 10.4 G-0

(404)

R

10.26 -303 923 -464 25 Aug 2.152

10.28 -319 910 -455 7 Aug 2.36"

10.29 -310 983 -439 6 Aug 2.60"

10.28 -302 858 -483 21 Aug 2.144

10.28 -302 881 885 -483 1005 +0.19 15 Aug 3

1005 +0.19 15 Aug 3



+1104571 ✓

G126-2

✓ 2108 ✓

11.15 dmo

21 27 54 → +12 04.5 →

~~111~~

10.59 + 0.47 5  
10.62 + 0.47 15  
10.65 + 0.47 0.5

1112

1112 - 55 1153 - 630

1113 - 49 1162 - 654 23 June 76

1112 - 55 1182 - 637 24 June 76

1112 - 53 1166 - 648 ③

29  
1/2  
9.





G126-2

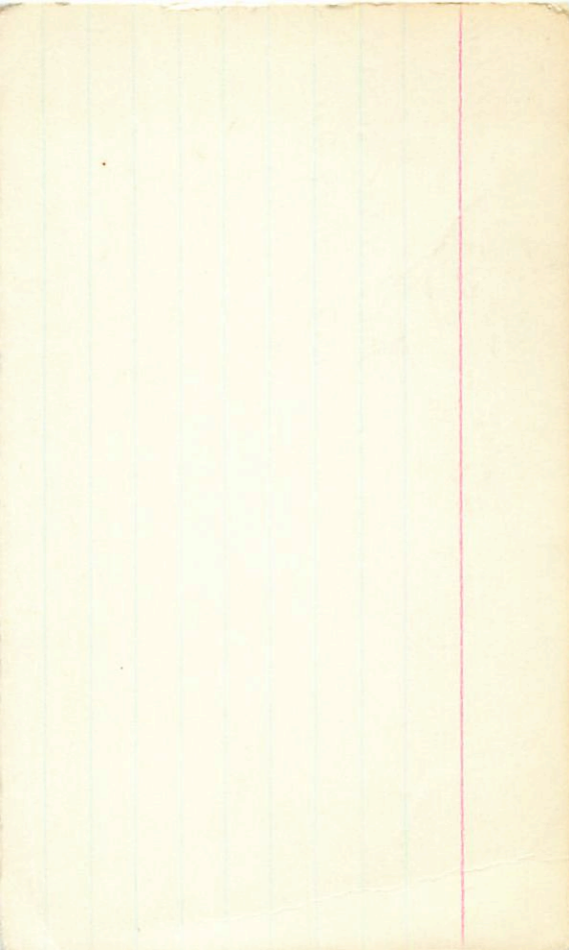
+1104571

21 27 42 +12 03 1.8dmo

6126-2 ✓

$$\begin{array}{r} 10.60 + 0.45 = 11.05 \\ 10.70 + 0.49 = 11.19 \\ \hline 10.65 + 0.475 = 11.125 \end{array}$$

$$\begin{array}{r} 10.59 + 0.475 = 11.065 \\ 10.62 + 0.47 = 11.09 \\ 10.65 + 0.475 = 11.125 \\ \hline 10.62 + 0.475 = 11.095 \end{array}$$

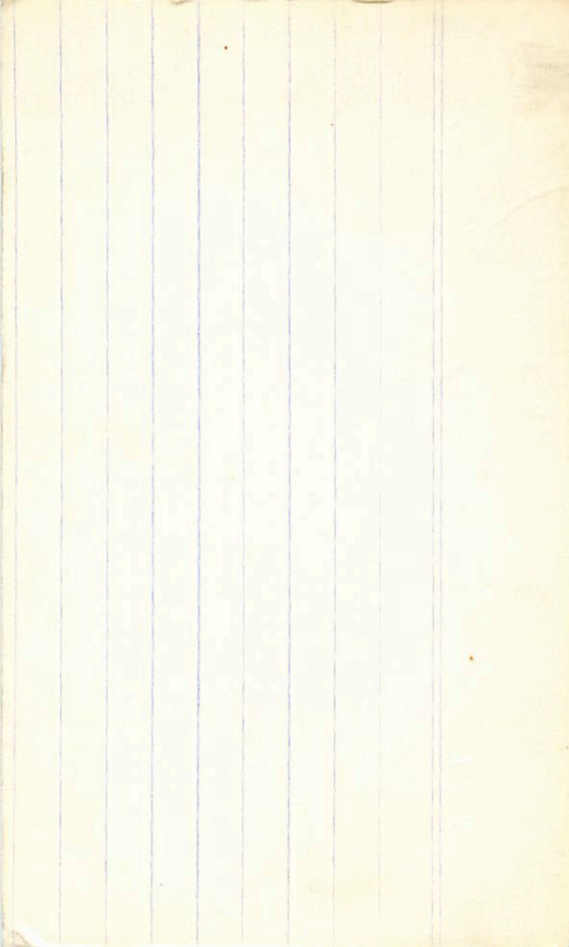




Ronly ✓ 6.77-10.7+108

204642 21 28 09 +28 29

6.37 +0.39 12 Aug 77



929-004234 ✓  
929-004234 ✓  
929-004234 ✓

626-5  
wo sp

9-29+47 (3) R  
+ 0 06.5  
+ 20.00

21 30 54

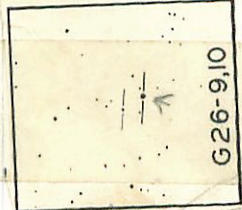
9.84+0.56+0.48 (5)  
1473 -0.07 -0.42 (3)

(108)

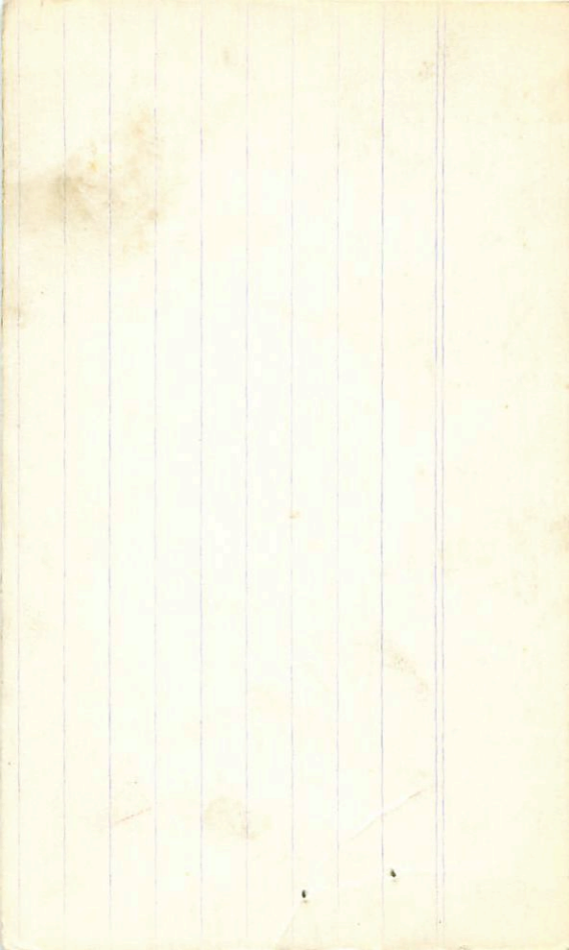
(SP)

980 125 1011-549 16 July 79 931 +0.9815 Spring  
977 139 1017-558 17 July 79 934 +0.970 3W  
979 131 1013-554 20 " " 930 +0.485 (4)  
979 133 1014-555 (3)

951 954 229 351  
953 1045 20 June  
953 +0.477  
9.10 +0.433 W  
9.60 +0.50



G26-9,10



L05749 21 30.1 400 03 1943

<sup>47</sup>  
9.78 9.53 +0.65

~~9.~~ 9.13 +0.43

9.87 9.40 +0.50

9.89 +0.94 +0.48 5

14.73 -0.07 -0.92 3

LOS 749 ~~8~~ 21 <sup>29.4</sup>  
~~12.0~~ +00 60 50  
08.0 1962

9.86 +0.95 +0.46 25 2000

9.43 +0.93 +0.50 21 Sept

"A 9.81 +0.95 +0.49 Sept 29 100"

9.94 +0.97 +0.53 Sept 5 20"

9.92 +0.98 +0.41 Sept 5 20"

9.89 +0.96 +0.48

B 14.72 -0.05 -0.93 Sept 29 100"

14.68 -0.05 -0.91 Harris

14.77 -0.10 -0.92 210

9.24 + 47 (3)