

Warr  
Kangaroo

20229

4

41

18

-65

22

9.06

✓

1024-027

Election 1914

9.42 +0.68 -0.08 90077  
9.42 +0.665 -0.10 112874  
9.42 +0.67 -0.09

9.43 -0.29 759 -478 282076  
9.43 -0.24 779 -501  
9.41 -0.45 774 -464 294077  
9.29 -0.25 766 -493 39076  
9.42 -0.43 760 -460 4  
9.41 -0.256 905 -505 29 1395  
9.41 -0.249 700

9.02 +0.325 172876  
9.05 +0.31 179076  
9.14 +0.315 102674  
9.17 +0.245 102474  
9.18 +0.305

882  
84

1395

Handwritten initials or mark at the top left.

4 44 00 -65 21

9.34 + 64 (1.76)

30229

4 40.6 -65 30

15.00

650

364 Wrong #

9.81 -100 +1119 -371 31 Oct 75  
 9.43 -239 759 -428 28 Jan 76  
 9.43 -254 776 -108 5/64  
 9.39 -245 777 -424 24 Nov 75  
 9.39 -245 766 -493 3 Jan 76  
 9.42 -243 760 -490 11 Jan 76

Handwritten notes: "not", "and", "W"

8.20 + 0.36 30 Jan 76

9.40 -248 768  
 9.05 + 0.31 17 Jan 76  
 9.02 + 0.25 17 Jan 76  
 9.04



-650369

30229 Wp

04 40 50 -65 21 <sup>9.6</sup> -62wp

MWD  
X X X

9.41 -260 792 -506 2076 27 Nov 80

9.42 -258 789 -498 26 Aug 80

9.43 -265 788 -481 23 Nov 80

9.41 -247 777 -494 2.900 21 Nov 80

9.42 -261 784 -492 2088 (4)

RR

9.42 +450 066 416 2.55 (5)

9.41 465 057 421 -1975/6 (6)

9.42 456 061 418 2.55 (10)

9.42 044

9.10 +030 (7)

9.10 +03.5 4

9.10 +0309 (6)

9.09 +10.292 <sup>10.5</sup> 80

9.10 +10.297 20 Nov 80

9.10 +10.294

9.10 +0.300 (2)

V108

4

45.4

46.25

+26.00

1943

+26.05 10.2 dmo

(R)

70.70 <sup>100</sup> Feb 1/64

9.30 10.82 19 Jan 84

+23<sup>0</sup>747 <sup>3057</sup>✓

4 48 35 +23 <sup>21.5</sup>~~21.5~~ 8.6 60

(X) (X) (X)

8.51	<del>304</del>	918	<del>449</del>	2.137	2 Jan 54	(40)
8.49	<del>324</del>	903	<del>396</del>	2.141	7 Jan 54	(40)
8.49	<del>314</del>	901	<del>400</del>	2.147	8 Jan 54	
8.52	<del>321</del>	904	<del>372</del>	2.144	10 Jan 54	
<u>8.50</u>	<del>324</del>	<del>904</del>	<del>390</del>	<u>2.142</u>	(4)	

4 49.5 - 53.58

CREAL  
54715

4 44 10 -53 55 259 1015

8332"  
8.5.58

(X) (X)

266 217 1063 514 27618

265 220 1057 482 30008

264 218 1059 486 40008

I 342  
Wavelength  
= 440 nm

③ 45h - 6501 81E 59E  
765 218 1059 - 484 ③

7.31 40278 2918

(X) (X)

46

472

540

154.2

9.5.6



+0144-070

+163-74

31128

4 51 20 -27 06 9.0

F3/8 IW

2701435

N<sub>0</sub> ~~279~~  
279

45.13

(N)

(V)

(X)

9.16 372 814 -621 2.123 14W

9.19 364 813 -615 2.116 23W

9.14 364 815 -614 2.120

+163-079

-5 +14

1158 -065

4.8

27

107

-65

4.7  
0

~~347~~ 095 286 2.590

(216)

7x1

2.8

1554

~~1444~~ ✓ ✓

4 51 30 +27 52 58 F2

JBB  
1/1

558-475 903-82 2219 206.880  
558-477 910-37 2217 211  
558-476 906-34 2218

283

6290  
9

1221

33214

4

53 45

-82 31

853

+202

82104

4

54 36

-82 30 09

(1986.5)

(X) (X) (X)

144134

\*9.61 -589 1428 -547 9 June 76

8.58 -578 1411 -541 12 June 76

8.60 -585 1423 -540 15 "

8.60 -583 1421 -543 (3)

Prof. [Signature]

31892  
-35489

4 5321 -3526 789

(A)

NOY

260 243 1004 -457 24 NOV 23

262 240 1004 -458 30 Oct 23

260 236 1017 -452 10 Oct 23

261 242 1004 -458 (2)

2.29 +0.252 9 Oct 23

2.30 +0.266 8 Oct 23

(A)

next to window double

✓ 4 54 00 -42 36.5 10.5 0.6

MS500

(X) (X) (X)

(X)

9.79-297	911	-474	2.114	WVARS
9.82-256	902	-465	2.125	30NARS
9.78-308	911	-474	2.118	2WVARS 60"
9.83-303	916	-470	2.113	3WVARS 60"

✓

"

MS500

(X)

9.60	-10.230	2WVARS
9.59	-10.234	30WARS
9.60	-10.232	

Length  
width

(128) (128)

-67 08

32546  
5  
4 58 45 54 80 45  
~~467~~ 9.3 62 11

✓ ⊕ ⊕ ⊕ ⊕ ⊕

50 803

9.37 -013 +561 -253 310000

9.36 -027 +556 -308 120000

9.34 -040 +553 -242 240000

9.37 -027 +584 -270 -273

9.37 646 256 553 ⊕

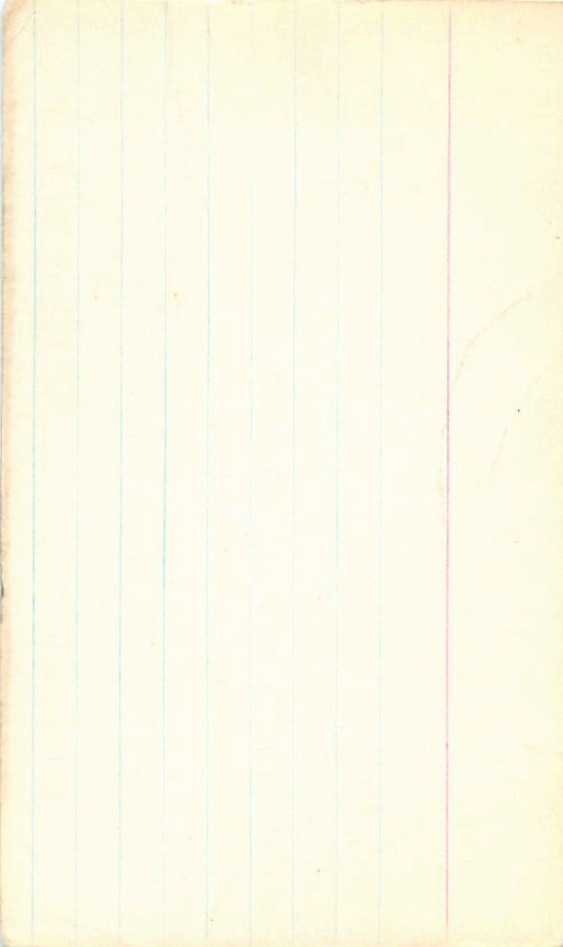
8.74 +0.435 267000

8.71 +0.453 302000

8.75 +0.44

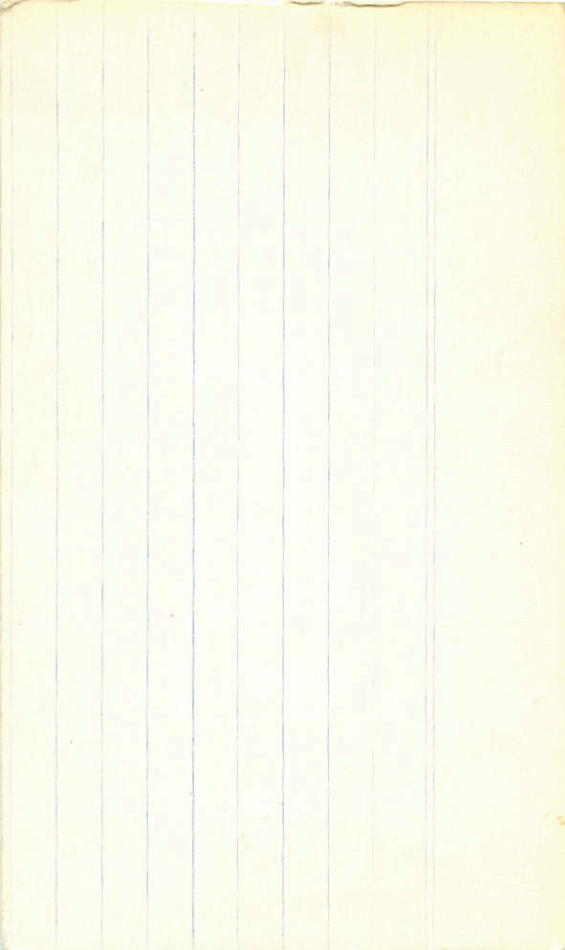
9.37 422-1279-324 14

\* 9.36 414 1271 -332 14  
9.36 -418 1271 -332









16.50

04 57 33 +14 30

5.9 } 40<sup>2</sup>  
7.6

0.96 0.64 711 2.709 Crawford

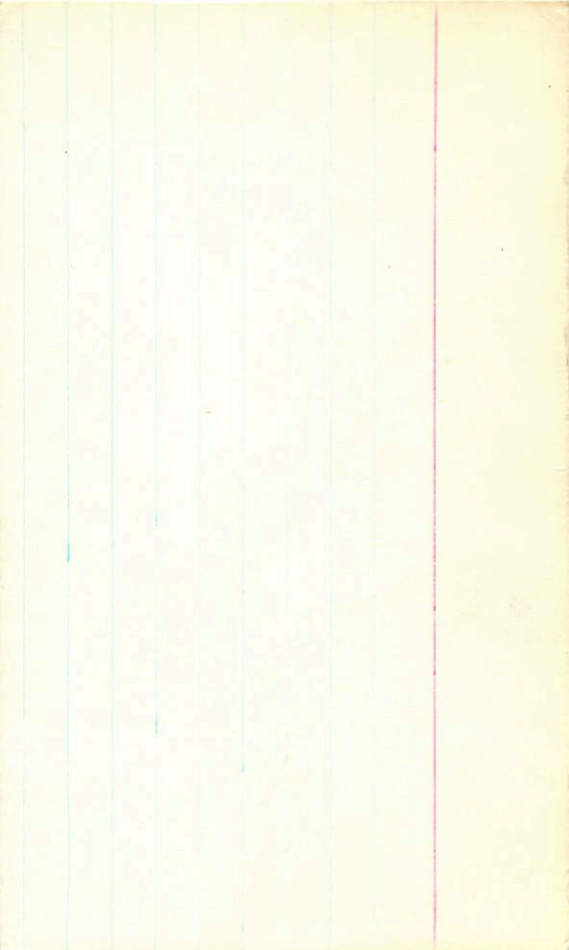
0.76 0.64 736 2.706

6.05 -617 +781 -108  
-182 2.213 18 cent 75

2.246 18 cent 75

7.58 -621 +818 -196  
-270

2.745  
2.762 200.00



Σ 814036 - 0.20

Dhw 101 ✓

130740  
84-24

5	00	00	+04	05
4	59	58		

04.5 ✓

981 - 396 797 - 473 2.127 - 8 Jan 20 (Dhw 101)

978 - 384 757 - 458 2.145 9 Dec 74 5.63 + 0.163 19 Dec 74

978 - 359 (811) - 442 24 Dec 76 9.79 + 0.175 27 Dec

977 - 385 761 - 443 25 " 9.70 + 0.18 29 "

980 - 405 581 - 409 26 " 9.75 + 0.19 31 Jan 77

974 - 394 803 - 490

979 - 365 777 - 472 2.144

975 - 418.3

974 309.60 437 7119 (B)



82287  
+240729

+57.3

5 02 40

+24 57

88 65

(+) (2) (10)

7.42 -211 937 -505 27 Dec B

7.47 -207 951 -498 29 Dec B

7.45 -209 945 -502

504 214 406

(305) (305)

(RV)

7.14 +0.300 9<sup>84</sup> Jan  
2.05 +0.278 24<sup>84</sup> Jan

684-36

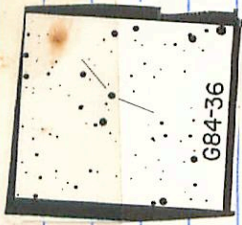
~~503 45 +4 18.6~~ 11.174 +1.57 +1.07

~~503 24 +4 14.2~~

504 55 104 19

503A

(RT) (X)



10.59 10.854 8.025

10.55

32874  
667071+

5 0 5 5 5 +16 48 8.1 F8

(X)

VB  
VB

8.46 -399 860 -426 2.166 270000  
8.47 -397 872 -417 2.162 290000  
8.46 353 866 423 2.164 (2)

307 147

311 142 489 2.643  
(223) (524) 425

317



19105- 5 05 05 -79 32 953 05

(S) (X)

968-272 954-464 3 NOV 83

966-277 965-462 4 NOV 83

967-274 960-464 (S)

✓

9.40 10.30 29.00

102  
20

52  
15

3

107  
167

3345

5 07 20 -46 18

109/18 03 90 FF/60T

-40534

(X)

8.65 -324 884 -443 3.132 27400

8.67 -350 899 -462 2.139 22400

8.70 -355 899 -458 2.134 23400

8.68 -352 899 -457 2.135 (2)

104

W. of ... \*

33753

(X)

5

10

35

-44

57 8.91 + 1.59

220 0.815

FWD

10

5

10

59.2

-48

50 M0 (1980)

Bookkeeping

978

106 302

60000

8.87

+267

+1261

-767

1300075

8.95

+247

-1240

-719

1400075

8.97

+236

+1223

-773

3100075

9.97

+221

+1322

-612

1 Nov 76 8.97-120 1561-836 (2)

8.97

+247

+1276

-876

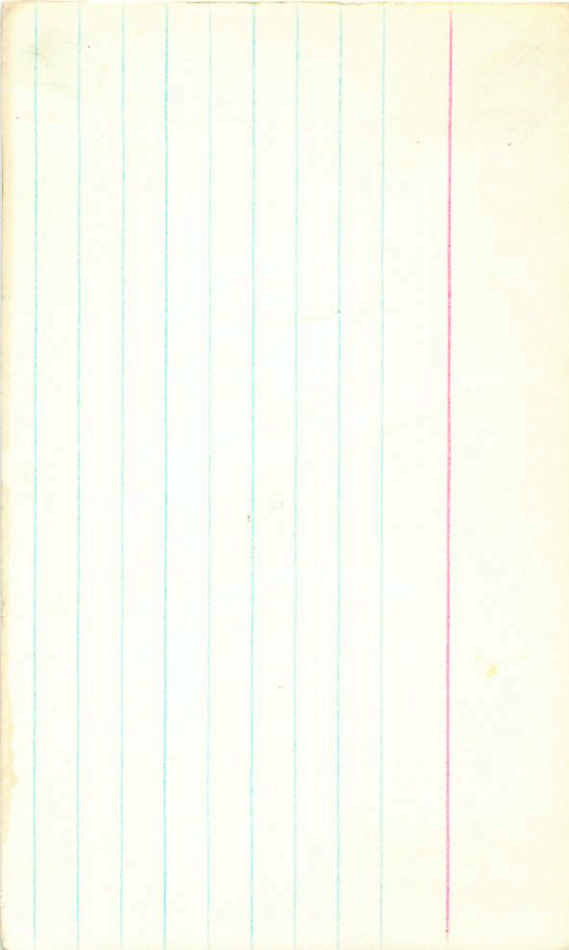
8.83-122-1562-833 1/3

\* 8.88

-117

1560-835

8.88-117 1560-835 1/3



33911<sup>Cal</sup> 5 10 10 -44 36 8.71 GF 1/10

4/16/13 (X)

A

" B ↙

"

8.23-253 988-402 110013

(10)

8.46 10.248 80013

(253)

4190876

5 14 00

+20 02

7.70 60

~~(X)~~

2 ~~now~~

7.73 - 272 928 - 439 2.126 2 June 84 (40)

7.72 - 288 923 - 415 2.126 7 June 84 (40)

7.72 - 283 919 - 396 2.127 8 June 84

7.74 - 295 930 - 386 2.132 No June 84

7.73 - 285 928 - 409 2.128 (4)

84599

5 16 00 -42 32 8.5035

-420634

(7)(4)(4)

8.30 313 942 -463 2128 270003

~~8.31 259 918 -464 2141 300003~~

8.29 305 931 -440 2123 310003

8.30 309 936 -472 2125 (2)

400 206 437 2.546

(324) (357)

406 320 357



320071 6.75 565 1.06 1259  
 15 6.76 564 1.065 1274  
 22 6.76 565 1.08 1278

Var?

35155 5 20 -8 42 7.05

474  
 177

4.76 +1.81 +1.71 20 Oct 71 1245 5.46 +0.99 18 Oct 71  
 4.78 +1.81 +1.70 24 Oct 71 1249 5.45 +1.00 23 Oct 71  
 4.79 +1.79 +1.71 22 Dec 71 1308 5.53 +0.99 1 Dec 71  
 5.33 +1.00 23 Dec 71

~~5.44~~

6.77 +1.80 +1.71 (C) 5.57 +0.97 31 Dec 73

5.55 +1.035 (D) (GMM) (0.2) 1.015 58

12574

L81 +182 +183 9mar74

8.14+685+11②  
8.40+0.24②

36283      5    29   46    +15   46    650

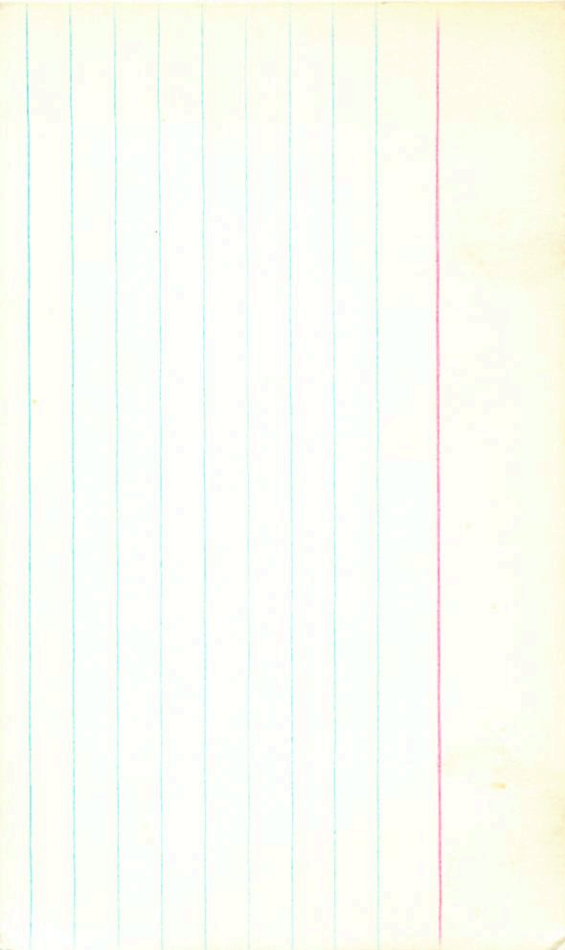
8.62-274 880-472 511176

8.61-274 876-487 1211

8.62-276 878-480 ②

434 153 424 24

901 202



36245

5

30

35

-42

19

72

HFG)

A7/PD

(X)

# 7.580

7.5

Number

ADP

(A) 7.20-534 918-74 2.272 41113

32/65

-420701

5 33 30 42 465

8.2-605

(X) (X)

8.56 344 909 -416 2143 27/dec 83

8.54 337 895 -417 2.161 30/dec 83

8.54 340 894 -421 2.144 31/dec 83

8.55 344 900 -419 2.145 (3)

1189

363 123 492 <sup>620</sup> 2.120

(288) (419)

300 285 371

37227

5 33 16 - 57 05.5

-570837

(X)

~~(X)~~

(X)

(X)

upside

6.75	-472	870	<del>-114</del>	2.225	85
			-20		1476
6.75	-476	912	-151	2.230	2121
6.77	-483	886	-101	2.211	15

5.1

184

225

145

80/8

2716

(213)

560

37655

244 380 176 373 2.593 3000 f  
x33.6

743 605

5 37 25

-42 58.5

(11)

7.45 - 329 879 - 446 2.124 26083

7.45 - 332 875 - 486 2.120 36083

7.45 330 877 - 441 2.122

378 152 469 2.593

(10)

(265 343)



1382

124

081

28417

-71261

5 39 00

-71

38.5

~~5 38 44.7 -71 39 41 (1986.5) 1<sup>st</sup> E~~

(X)

\*

966 -998 1125 +172 2.552 940

965 -1017

1134

+171

2.569

10"

966 -1008

1130

172

2.560

N=0.1 9.50 Ap

37824

5 40 2.0 +3 46

6.67

+3-100 ?

Aug?

~~(X)~~

6.42 -394 +1482 -562 12 June 86

~~(X)~~

6.42 -365 1494 -567 13 June 86

Just and?

$$\boxed{5 \quad 43 \quad 50 \quad +9 \quad 145} \quad 11.84 + 156$$

$$P_{100} H_9 \quad \left\{ \begin{array}{l} 42.2 \quad +9 \quad 14 \\ 11.84 + 0.56 - 0.17 \end{array} \right.$$

$$\textcircled{699-21} \quad \textcircled{11}$$

$$\textcircled{60+9}$$

$$11.84 + 0.56 - 0.17 \quad E \quad \textcircled{P}$$

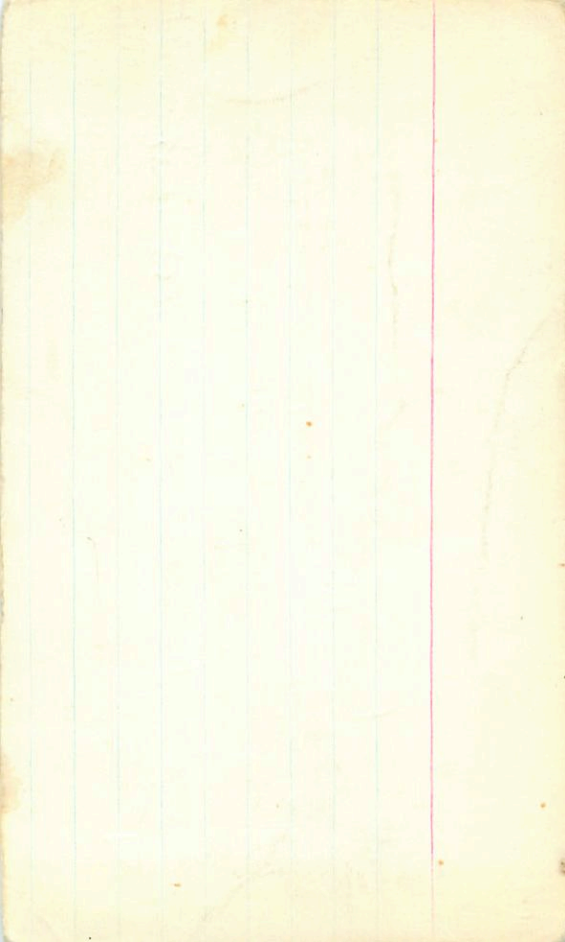
$$\begin{array}{r} 1177 - 307 + 273 - 589 \\ 1180 - 256 + 904 - 604 \\ 1179 - 219 + 884 - 607 \\ \hline 1179 - 307 + 798 - 600 \end{array}$$

$$\begin{array}{r} 11.53 + 0.258 \\ 12.289 \end{array}$$

$$\begin{array}{r} 11.59 + 0.25 \\ 11.79 + 0.25 \\ \hline 11.69 + 0.25 \end{array}$$

Industry  $\textcircled{60x}$

17 Jan 74  
13 Dec 76



APR 1954

8 43 00 -45 50.5 638 FO III

(\*)

640-528 918-50 2.264 27 Oct 8

170 190 872 2263

174 181 848 2758

② angle 0880 9810 2760 ②  
0207

450

1050+210

38459

5 42 53 -47 50 850 +87

-470 125 ✓

790  
767  
23

Apples

(X) (X)

8.18 +0.266 8 (out 8)  
8.16 +0.265 9 (out 8)  
8.17 +0.266 274

1 plant +30

8.50 -209 1047 -448 10 (out 7)

8.53 -216 1057 -452 2 (out 7)

8.53 -213 1051 -462 3 (out 7)

8.52 -212 1051 -454 (3)

463 362  
313 466

501

(R) (R) (X)

501 312 455  
462

cod  
-56023

5 46 35

Wharf on left  
RT  
OR

Siemens  
~~5698~~  
OR

116 h?

2 12.42 10.236 29112



274 t ✓ 1/2  
15 e  
h/1

3447

5 49 50 -43 42.5 -10.69

870

-43 0.698

8.72 -294 912 -517 2102 16123

11.74 (D) (F) (X)

8.74 -300 917 -517 2105 26123

8.74 -301 914 -509 2101 36123

8.73 -298 914 -515 2103 (3)

11.74

11.74 411 196 393 2.570

11.74

509 (31)

002 193

Mr

39462

5

53

15

-42 14

8.0 F3 V

near  
chr

~~39462~~  
39462

7.58-434 864-374 2.180 27 Oct 83

7.58-426 844-354 2.174 4 Nov 83

7.58-446 864-348 2.182 24 Nov 83

7.58-440 864-370 2.180 (2)

(F) ⊕ ✓ 100100 (R) I

10.63 + 0.54

-48063360 5 18 ~~38~~ <sup>00</sup> -48 53 285

(X) -174160D

(11 more)

10.16 -326 986 -630 <sup>p=+0.20</sup> 2.1 Apr 94

10.70 -334 (482) -57 <sup>100</sup> 11 Dec 75

10.70 (365) (4830) -580 12 Dec 75

10.67 -331 790 -596 2.119 28 Aug 94 10.20

10.40

10.68 -344 807 -615 2.108 17 Oct 94

10.69 -335 795 -611 2.114 (4)

11/14

10.48 + 0.245 26 Nov 75

10.26 30 Nov 75

10.25

92 Feb

1168 -726 1087 -655 252

7

So Steel  
Sec + CE  
- 0305

Myln

2094

5 54 20 - 52 35 5 29

(+)

boet ora -  
903 615

15 55 - 01 45 2

(+)

90293  
55058

camp/ mnt 9/16 926 555 - 605

- 55058

926 408 909 491 505  
926 408 909 491 505  
926 408 909 491 505

(+)

9.11 - 303 - 11.6  
926 408 909 491 505

911

926 408 909 491 505  
926 408 909 491 505  
926 408 909 491 505

(3)