

city R.I. ✓

3408 ✓

00 35 26

-49 16 65 }

cpm

60 37 52

-49 16 86 }

$$\begin{array}{r}
 6.82 - 312 - 904 - 408 \\
 6.75 - 311 - 910 - 406 \\
 \hline
 6.79 - 312 - 907 - 407 \\
 \hline
 179 \quad -444
 \end{array}$$

25 nov 75

6.56

+0.22 30 nov 75

$$\begin{array}{r}
 6.75 - 311 - 910 - 406 \\
 \hline
 6.79 - 312 - 907 - 407 \\
 \hline
 179 \quad -444
 \end{array}$$

24 nov 75

6.63

+0.21 4 Sept 76

6.60

6.60

+0.215

$$\begin{array}{r}
 9.38 - 249 - 1006 - 401 \\
 \hline
 8.41 - 242 - 954 - 410 \\
 \hline
 8.40 - 241 - 1001 - 406 \\
 \hline
 266 \quad -426
 \end{array}$$

24 nov 75

8.00

+0.26 30 nov 75

$$\begin{array}{r}
 8.41 - 242 - 954 - 410 \\
 \hline
 8.40 - 241 - 1001 - 406 \\
 \hline
 266 \quad -426
 \end{array}$$

25 nov 75

8.20

+0.26 4 Sept 76

$$\begin{array}{r}
 8.40 - 241 - 1001 - 406 \\
 \hline
 266 \quad -426
 \end{array}$$

266 -426

8.10

+0.26



✓ ✓ 0.7 = W

3628 00 38 00 ✓

2 + B ✓

1 P ✓

7.38 + 63 - 12

~~7.20 + 0.215~~ ③

+ 2 59.5

7.35 - 323 905 - 484 500 - 76

7.35 - 323 846 - 457 - 7" ②

7.35 - 323 900 - 470 ②

7.15 + 0.195 1569

7.17 + 0.185 18429

7.35 - 314 900 - 471

7.35 - 307 981 - 458

7.35 - 310 990 - 465

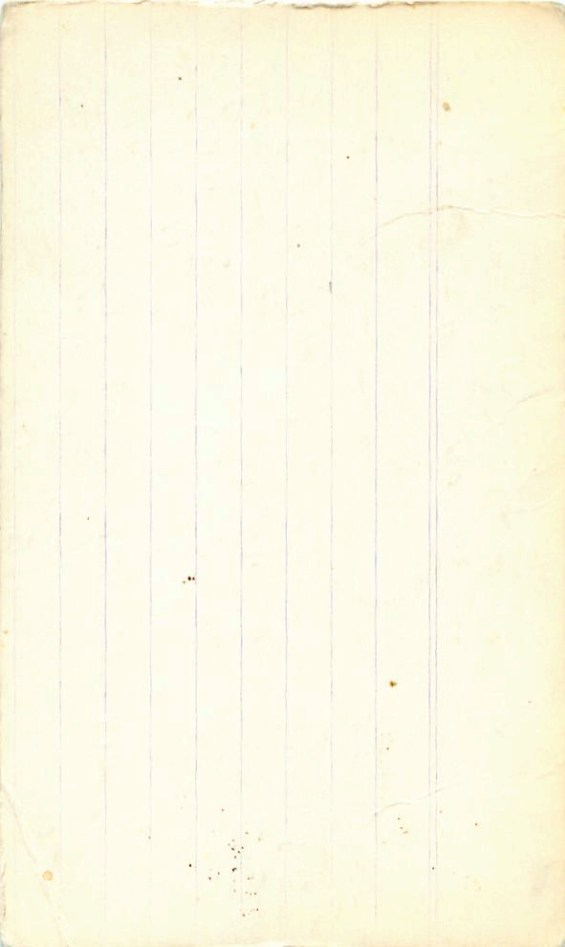
2.128

2.125

2.127

7.15 + 0.195 7.15 + 0.190 ②

4.800 79 9.11" + 193



✓ ✓
-52° 112

W B Vaking
00 39

11.28 +49 -29 (55)
29
-51 ~~30.5~~

CPD-52074 J

~~11.10 +024 (2)~~
95



86 269 ! 1799

11.22 -332 +762 -559

24 nov 75

1127 366 080 234 2.590

11.27 -336 +741 -623

25 nov 75

11.28 -338 +756 -635

11 Dec 75

11.26 -329 +770 -632 (3)

11.07

+0.207 15 W 75

11.27 -342 796 -661

2.122 2 Jan 76

11.07

+0.208 25 Jan 76

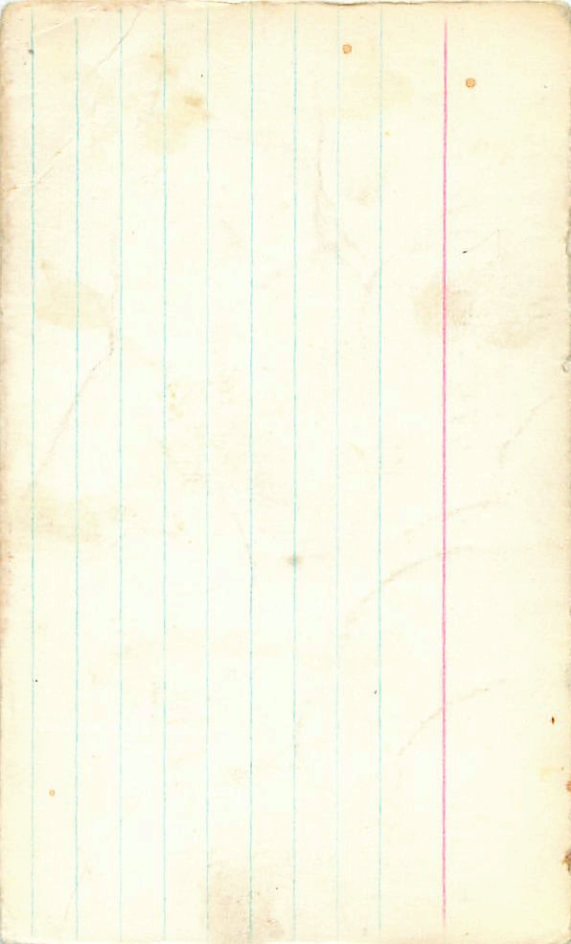
11.27 -345 805 -693

2.118 3 " "

11.07

+0.205

11.27 -341 799 -669 2.120



78
-520 857

00 39 21 -51 33 1128 +0.49 -29

05

-520 112 608

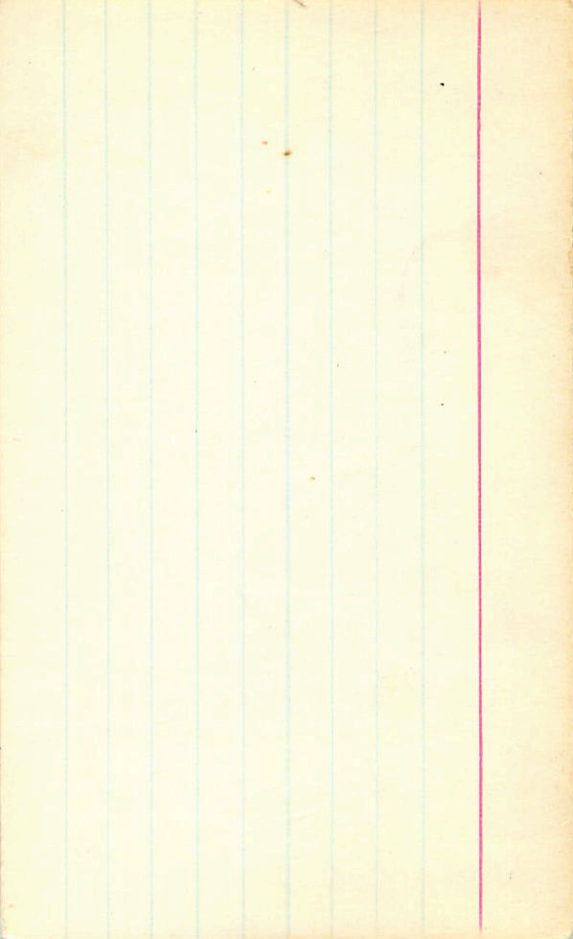
~~11.117~~
1007
11.112
11.110

+0.235
+0.225
+0.24

19200 1968
18 Dec 68

4 Dec 11.26 +0.49 -0.24
11.27 +0.49 -0.26

+0



4009

80

41

35

-00 26

806

100

(X)

8.59-024 1290-487 10 Oct 83

8.59-017 1256-455 11 Oct 83

8.59-020 1263-468 (2)

M₂ ✓

8.07 10363 9 Oct 83

8.09 10357 9 Oct 83

8.08 10360 (2)

404095 (98.5) 00

42 37.3 51 09 23 41.7

8.8

42 20 - 09 25.5

150

910-0000 50

(X) 915-252-942-517 10 Oct 85 2.135

916-222-907-481 27 Oct 83

Web dja

8.90 18.241 29 Oct 83

8.91 10.239 30 Oct 83

247

8.91 10.240

(+) A ⊗
 + 575
 40 4308
 710

00 43 50 - 65 45
 60 43 50 - 65 45

Auction

6.54 + 0.655 + 0.115 (2)
 6.30 + 0.26 (2)

6.57 - 29.4 (927) - 485 5 Sept 76
 6.57 - 30.2 + 493 - 486 = 452
 6.56 - 30.6 188 - 486 = 170 Jan 75

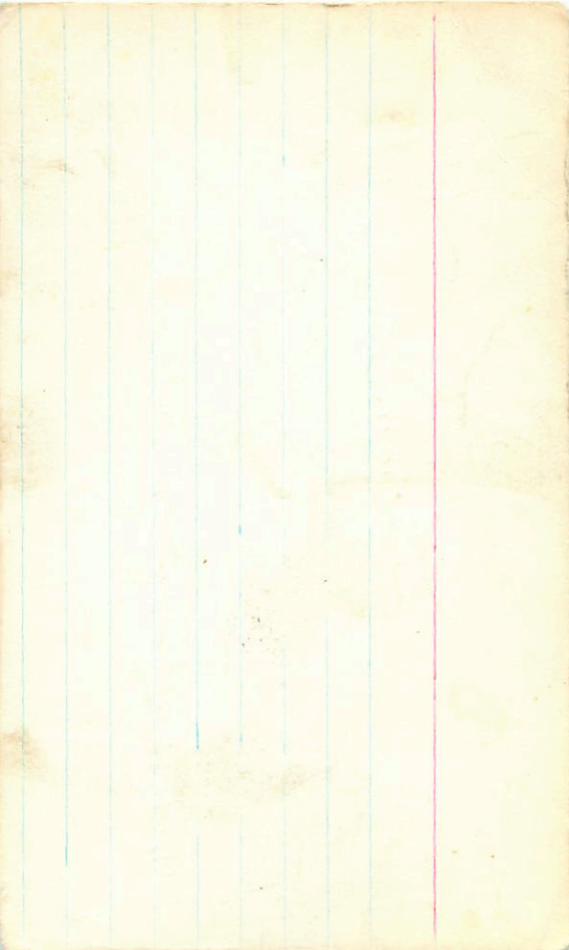
6.56 - 30.0 898 - 486 = 118 - 170 Aug 70
 6.56 - 30.8 898 - 794 = 110 22 Aug 70

6.56 - 30.2 889 - 489 = 113 (5)

A ⊗
 RIF

874 + 0.227
 6.43 10.233
 10.227 60 min

6.56 106 11.4 419 2.593 + 1
 814 + 0.346 11000



4045

07 42 00 +05 25 8.7 A3

(74)

8.81-551 914 +61 2.351 10 out-3

8.81-551 924 +74 2.351 11 out-3

8.81-551 916 +70 2.351 (2)

4393
R+1

00 00 20 20 48 56.5

ASIV 25

0.20
L.000

076 158 883 2.230

764-817 884-40 2227 95883

76 180 965
24/24
1/2

NO

800 1220 1034
130 573 746

900 120 327 200
076 076 523 200

0104 3191 220
2570 062 583 667

4324

00 44 55 - 01 16.5 8.7 125

(+) (+)

8.95 - 431 856 - 357 2.150 106283

8.95 - 445 874 - 359 2.187 116283

8.95 - 431 856 - 357 2.150 (+)

$$(p) + R - (2r) + 0.53B$$

$$8-y - R \pm + 0.07B$$

HV 4747
-230315
268-53

BP M 46650
48 35
47 58

10.0 .544 770
K
-23

8.165 .565
8.972 .51

(X)

7.15 + 0.79 + 0.32 Cape
7.20 + 0.74 + 0.33 25 Nov 62
7.18 + 0.77 + 0.25 26 Nov 62
7.12 + 0.77 + 0.29 2 Dec 64
7.19 + 0.77 + 0.29 8 Nov 73

(A)

7.17 + 0.77 + 0.295
7.16 + 0.77 + 0.349 wind

(1 mile)

~~WASP~~
+ 204 Cape

6.73 = 86

(Hyd)

6.92 + 0.30 18 Dec 68
6.95 + 0.285 18 Nov 68
6.93 + 0.29 19 Dec 68
6.94 + 0.29 (3)

7.16 - 252 978
7.17 - 252 988 - 514 458 FT
7.20 - 256 997 - 525 564 FT
7.15 - 252 988 - 514 458 FT
7.15 - 252 988 - 514 458 FT

454 988 354

168

462

0.105 r 40

BPM 16274 . 0 47.8 -52.25

✓ day m, u-
u-
?

14.22 -073 +262 +275

474
9.48

4915
4207

00 49 50 41 40 9.1 P74

(X)

9.03 -382 892 -447 2.163 10648
9.06 -386 889 -428 2.161 11648
9.04 -394 890 -438 2.162 (2)

4679 00 59 55 403 55 8.0 92

(K)

7.97 - 254 862 - 389 2.163 10 Oct 13

7.86 - 400 873 - 385 2.161 11 Oct 13

7.86 - 397 869 - 387 2.162 (2)

5214 ~ 00 52 85 + 5 4 8.15 65

(A)

296 - 70 1194 - 445 106283

294 - 69 1185 - 422 110273

295 - 69 1190 - 433 (2)

(115)

✓

248 10.335 91023

$$5623 \quad 00 \quad 5655 \quad + 7 \quad 3018 \quad 822 \quad 200$$

$$\begin{array}{r} 286 + 33 \quad 1421 - 501 \quad 1160 + 83 \\ \hline 285 + 28 \quad 1428 - 502 - 1160 + 83 \\ \hline 286 + 30 \quad 1424 - 502 - 2 \end{array}$$

(RT) ✓✓

$$7.81 + 0.391 = 8.201$$

$$2.81 + 0.393 = 3.203$$

$$7.30 + 0.392 = 7.692$$

$$7.81 + 0.397 = 8.207$$

(A) (A) ✓
5780

02 58 04 +02 39 261+142

R-I = +62

7.68 +163 1404 -312 7 " "

7.65 +165 1412 -307 55 Sept 76

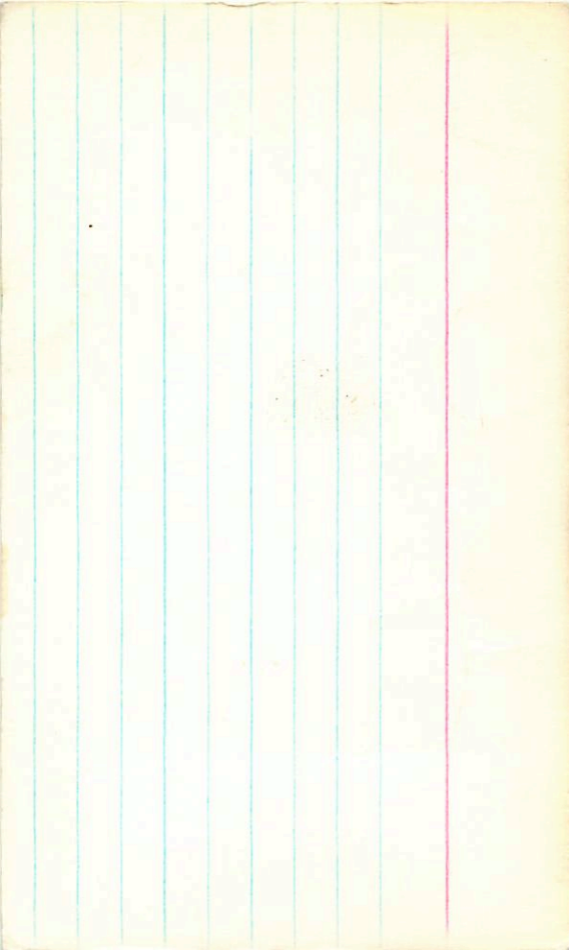
7.64 +159 +1402 -~~343~~³⁷⁴ 14 Oct 75

7.65 +165 +1401 -~~368~~³⁴⁴ 31 Oct 75

7.63 +167 +1397 -~~344~~³²⁰ 27 Nov 75

7.68 +164 +1403 -333 (5)

(3)



5624 00 56 50 -01 52 651 25
629

6.57 102 1155 -462 106083

(A) ~~Fried~~ ✓
QW ✓

[8.50 +0367] 80.83

247

6446 1 00 59 -77 28 7.18 10011

$\varphi = +61.6$

²⁴⁴²⁰¹⁰

7.19 + 1.38 + 1.35

6.54 + 0.58 1972.0

7.23 + 1.425 + 1.365 216423

6.57 + 0.565 2442011

7.20 + 1.40 + 1.39 186621

6.63 + 0.59 354723

7.22 + 1.355 + 1.39 226621

7.22 11.40 + 1.37

(4)

Auct.

Water

62446

✓ 1 02 00

- 77421

722 + 1.40 + 137

6.60 + 0.58 (3)

7.26 +146 1260 -309 5 dec 76

7.27 +158 8514 -279 23 Oct 76

7.21 +126¹⁴⁰ 1224 -386 24 " "

7.23 +156 1155 -313 28 "

7.24 +146 1204 -309

7.24 878 454 604 3277 ✓

868 454 604 3277 ✓

No 10 Ans (x) 01 02 12 +23 38

6224 (N) ✓ 0 58.2 +23 14 8.60 6514

-96.58

474 94 174.4 213

8.57 -248 886 -376 230.76

9.67 -228 848 -348 24 " "

8.59 -218 872 -389 28 " "

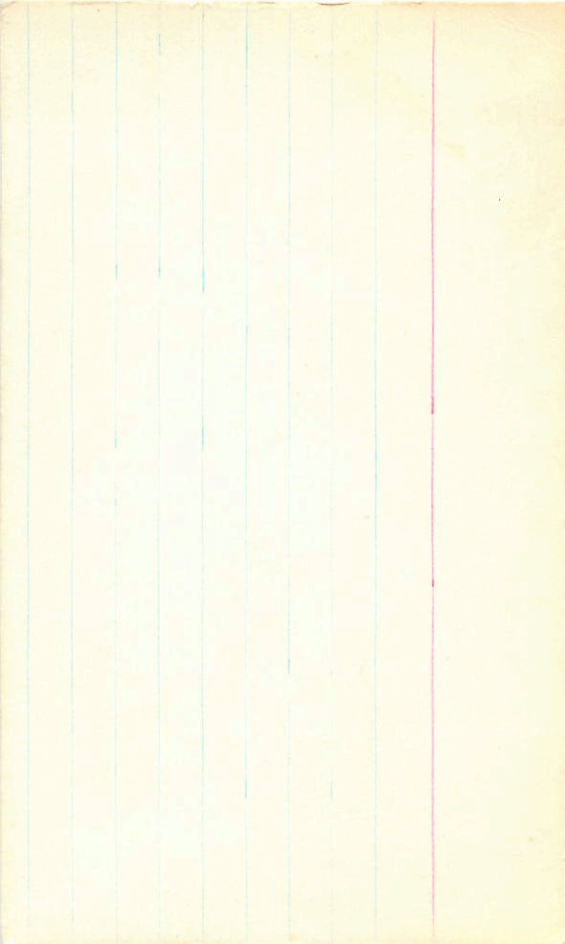
8.60 -231 969 -371

9.60 48 | 144 54 | 1731

Bank
AP Supp
22

~~8.38~~ 10.325 0.276

8.31 10.305 2.5076
8.34 10.315



6042
-450112

00 00 15
00 59 50

-45 24.5 9.5 100.5

8m 21m
(X)

(9.52 -413 866 -334 2.196)

Farm

(X) (X)

9.45 -233 1007 -466 30462

9.53 -232 1020 -500 314623

9.42 -230 1024 -510 29623 } 600

Agua

(X)

9.48 -231 1022 -505 (2)

(11)

481 285 403

9.17 10.279 9.519

(429)

(305)

+10194

1 01 50 +02 08

9.5+75

(X)

IP

+05

9.22 +265 304070

9.22 +255 314070

RB

9.56 -244 993 -522 2400

9.56 -243 993 -542 2400

9.56 -244 993 -532

940 +0.276 94084

long answer

right only

GI-44

1 0130

+03

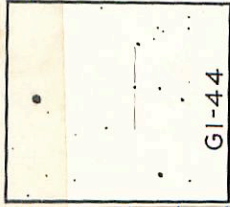
44

122 130

v871

h-m

1000
2585
2



GI-44

(R) (A)

1183 + 1.005 Y 0.003

11016

6219

1 01 45 -40 078 50 F57

40094

②

$$9.16 \quad 373 \quad 865 \quad -417 \quad 2.146 \quad 10683$$

$$9.16 \quad 374 \quad 868 \quad -411 \quad 2.154 \quad 11683$$

$$\begin{array}{r} 9.16 \\ \underline{374} \\ 866 \end{array} \quad \begin{array}{r} -414 \\ \hline 2.150 \end{array} \quad (2)$$

116 67

210 4831 2nd
320 2083 5th

6374
45015

1 03 15 44 40.5 97 012

70

898

9.73-345 ~~898~~-435 2.151 116.103

9.73-359 915-439 2.145 116.103

9.73-352 907-434 2.148 ②

(PMS)

6413 1 03 30 -45 0.3 6.86 M.18

48.109

(PMS)

[824 +0.816] 86.183

300
300

1031
3003

210
2143

6444

403023

1

03

50

-43

10.5

F20

⊕

longer in
power

8.52 -461 899 -366 2.191 1628

8.49 -440 876 -352 2.197 1628

8.50 -450 888 -359 2.194②

554

BPM
30551

6T563 ✓

1 040 -46 26

for low for up

15.42 → 112 155 55

-300

12.35 ✓

12.34 || 12370°

3.00

9994 9759

+216079

~~2333~~ 2161

$\frac{176}{16} = 10.24$
 $\frac{228}{16.0} = 14.25$
 $+030$

BRM3015

24 - 46 W
1 047 - 4624

~~+240~~
+220 + 023 -

WSPR

00400

152424 - 55 59m

$T_e = 1240$

13.0

(15)

9974 974
0833 208

2311
0252

1542 4112
7112

2022 335 514 +15 55F 20m

(450)

(123)

(300) 024
309

183

9911 9995 2808
4102 2044 0270
454 + 54

(200)

11

464

319

309 00
78

0240
204

✓

1.100
-15.400
519.000
75.000
3.000
414
2.000

589

0.818
9.559
130.001
92

13

29

Arcturus ✓

6734 ✓
01 07 00 +01 52 644 +97

(+) ⊗

433

P-5 = 1335

647-197 1008 -490 7 Sept 76
644-192 1001 -461 5 Sept 76

P.F.

Arcturus

644-200 +1008 -487⁴⁵⁴ 13 Oct 75
646-204 +1021 -453⁴⁷⁷ 14 Oct 75

0.313.

(4) 6.

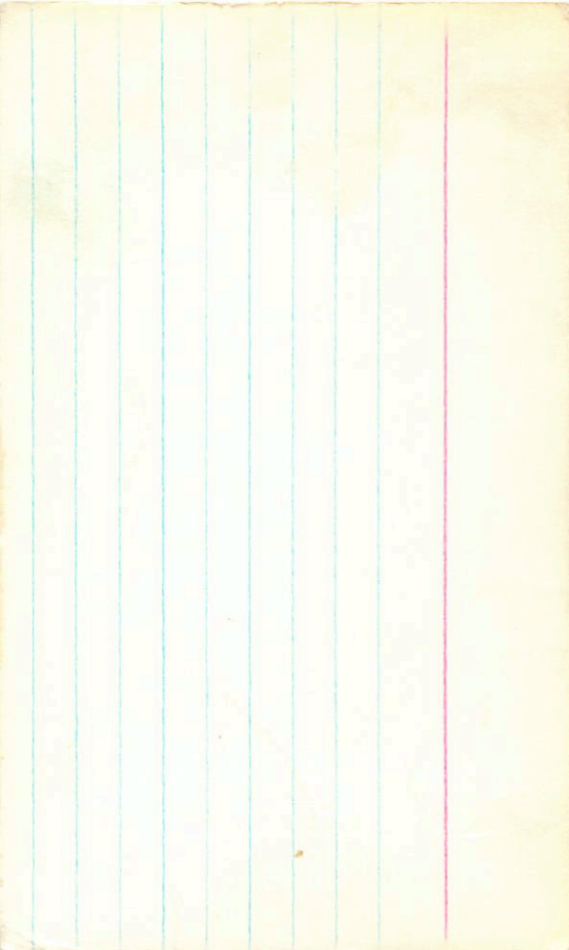
645-198 +1010 -470

326 ⊗

433

645 516 2 518 3 412

320



~~RFM20559~~

072 - 53 14
254 - 45 ~~2~~

RFM11413

1504 - 1384 - 009 B

RT 650

1587 - 1384 - 009 B



which day 11=0.23
720

Myok $T_c = 0.24$

6833 ✓
PI 10ms

1 08 40 +54 38 6.73 +1.15 12.10

$\rho = -245$
6.79 +1 1067 -370 962.50
6.77 +2 1061 -359 11 " "
6.78 +4 1064 -365 11 " "

462

2500

1

50

06-

44

73

88

(X)

9.58 - 236 1023 - 476 215480

9.57 - 222 1004 - 477 241000

9.58 - 224 1014 - 476

484 278 433

✓ ✓

9.25

10.26 207080

9.25

10.270 210

9.25

10.265

(X)

7231 01 11 50 +16 39 846 120

W X

9.31 -90 1172 -418 106483

9.29 13 1164 -424 276483

8.30 -87 1168 -421 (2)

633 420 440

W X ✓

285 +0.348 306483

284 +0.336 76483

283 +0.330 256483

284 +0.338 (3)

249

7382 1 12 30 -39 39 2.4 53/5

-400114 728 -432 876 -374 2.183 26.883

6554 727 -433 874 -383 2.187 26.883

1927 726 -428 880 -388 2.190 24.000

1928 727 -427 878 -381 2.188 25.000

1929 727 -430 878 -383 2.187 24

1930 726 -428 880 -388 2.190

1931 727 -427 878 -381 2.188

1932 727 -427 878 -381 2.188

1933 726 -428 880 -388 2.190

1934 727 -427 878 -381 2.188

1935 727 -427 878 -381 2.188

7882 1 12 30 39 7.4 F015-13

40.114

Stump

(DP)

(1985.5) 01 07 02.2 -08 1833 5.5

-9.221

1 06 45 -8 20.5

80

(X) (X)

8.48 -308 930 -485 2.132 9 Jan 84

8.46 -320 (950) -521 2.131 10 Jan 85

8.45 -298

5.13

(X0.2)

8.48 -320 941 -521 (2.144) 7 Jan 85

(X)

8.47 -320 935 -521 2.132

388 205 356 22185

(2) (X)

*8.48 -697 (324) (308) 1230 525 2269 9 Jan 85



CqEF350

HTT702

01 14 40 -47 07

13.1 R

(RTVV)

11.49 +0.458 246483

11.51 +0.453 306483

11.50 /
A.05 +0.445 (2)

ND

11.20

✓

✓

(A) Adams

1755 1 15 00 - 68 59 489 76 1/2

(A)

Am. No's → 1 14 15 - 68 55.5 723 + 87

(486-410 920 426 2156 27 Nov 83)

486 294 191 484 2681 33
→ 486 212 119 904 2650 00

(B) 441 416

115 MI 511

723-155 1191-526 27 Nov 83

725-152 1185-456 3 Nov 83

725-159 1193-487 4 Nov 83

725-155 1190-492 ③

6.80 + 6200 30 Nov 83

6.80 + 6298 29 Nov 83

6.80 + 6300

✓ J 7424 C-268-18

10.06+72+02
100+555
② 100+555

-17⁰219 01 12 58 -16 34

10.13 -309 153 ~~477~~ 5 Dec 76

10.159 ~~313~~ 0.286 -517 7 Dec 76

10.13 -289 +981³ -537⁶ 12 Dec 76

10.68 -305 +869 ~~477~~⁴⁹⁸ 13 Dec 75

10.14 -319 +883 ~~477~~⁴⁹⁸ 14 Dec 75

10.11 -256 +952 ~~477~~⁴⁹⁸ 31 Dec 75

10.13 -292 +869 ~~477~~⁴⁹⁸ 1 Nov 75

10.12 -303 +870 ~~477~~⁴⁹⁸

-520

* 10.12 4406 145 338 ④

58

-170219

112

45

-16

38

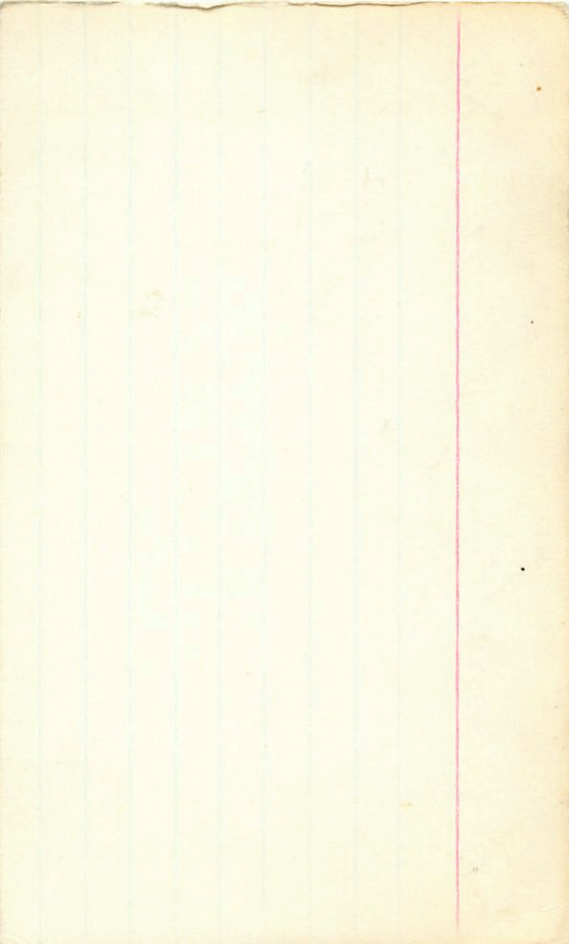
1006 + 0.72

34

100

$$\begin{array}{r}
 9.56 + 0.22 \quad 2720070 \\
 9.54 + 0.20 \quad 2720070 \\
 \hline
 9.54 + 0.20
 \end{array}$$

$$\begin{array}{r}
 9.86 \quad + 0.25 \quad 12 \text{ Aug } 70 \\
 9.50 \quad + 0.23 \quad 15 \text{ Sep } 70 \\
 \hline
 9.88 \quad + 0.24 \quad (2)
 \end{array}$$



5000

(198.5) 01 15 48.8 + 18 26 56

2000 1 15 30 + 18 25 87 65

17274 (X) (X) (X)
601500

B

8.45 - 336 928 - 486 2.141 100.85
 8.45 - 324 901 - 495 2.127 91.85
 8.45 - 330 914 - 490 2.135 (2)

G-272-3

01 20 45 - 16 18

134 42

01 14 13 - 14 275

027 800

REVENUE

V.W.

12.12 + 447 (3)

NO

12.25 + 0.464 296.83

12.00 + 0.437 306.83

12.16 + 0.441 9 Jan 87

8294 i 20 45 -33 20 700 11211

7.07

504
639
615

7.03 715 1349 -480 110.873

7.03 717 1342 -495 75.973

7.00 712 1351 -486 294.973

7.02 715 1347 -487 ③

7.02 715 1347 -476 ④
702 715 1346
-487

569481

410

①

①②

6.24 + 367
6.48 402
6.93 + 400

[8.82 - 10.473] 80.073
6.45
6.49
6.94
10.403
10.8919073
10.357

8306 1. 20 40 -45 14.5 243 1525
14

1563

1111
11.4
A

230 155 430 2.657

247-470 880-285 2209 8473
243-471 886-289 2214 29473
245-470 883-287 2211 2

24584 430
570
122

~~1111~~

1111

1111

8249 1 20 55 +15 04 8.3 624

Regden (X)

8.10 -303 892 -488 2.124 29 NOV 85

8.04 -307 901 -458 2.135 30 NOV 85

8.04 -313 916 -477 2.129 1 Dec 85
806 -308 903 -488 2.129 (3)

110
401 176 451 2.601

(290) (371)

400 310 350

8352
500183

1 21 00 49 25.5 9.1 P50

(X) (X)

883 - 402 886 - 356 2.188 106.83

882 - 406 897 - 405 - 755 905 - 288

$\frac{882}{882} \frac{406}{406} \frac{897}{897} \frac{405}{405} \frac{755}{755} \frac{905}{905} \frac{288}{288}$ (X)

8391

1 22 20

-42 31

7.02 -45
7.06 -490

902
892

-209
-221

2.242
2.284

24 Oct 80
7 Sept 83

See

7.02 -450

901

-229

2.239

32880

Hydro

7.04 -455

904

-212

2.245

400

7.03

-490

884

-197

2.230

24 Nov 80

7.05

-483

897

-209

2.228

25 Nov 80

7.04

-490

894

-213

2.235

(4)

208 248 1.50 2.42

7.04

-490

895

-213

2.237

2.10 168

204

2.230

(231)

(662)

NO

8391 Var?
-440/71

114
524

201

21 30 -43 42.5 F/2 IV

(K)

210 166 646 2.729

1.3 126
0.37 1.27
4.204

706-450 842-224 2234 25878
702-455 502-205 2205 24483
704 452 847 2240 2

224 124
1.1 1.1
2.2

(K) moped

+17⁰697 1 21 20 +18 345 8060

(289)

⊗ 7.6.97 319 909-510 2.12.1 4/Jan 83

all
Pudupudi
Kannur

+12.168

+12.164

now CP

140. ~~430~~ ~~454~~ |

1 21 30

+12 39

21 39 98 N

Parables

✓
✓

Hepatitis

8391

1

21

30

42.6

~~19~~
17

6.5

21

19 20

43 44

8.1 10.2

7.02

450

232

2.239 32280

7.04

457

212

2.245 4"

7.03

494

217

2.242

7.04

488

203

2.229

7.05

496

210

2.234

15.6

203

12.5

0.70

2.236

(237)

(410)

15695
+0415

2 30 25
+1 00.5

6.78 A2

15598

7.5 A0

2 29 25 -05 07

158
495
156

16329

7.5 F2

2 36 05 -02 25.5

(1985) 01 225 08.8 +07 20 43 G-8 TY

83 57 1 2/ 54 +07 18.5 73

APR 1985

(X) (X)

7.23-193 992 -578 10 Oct 85
225 187 970 -577 Y

8500

1

22 20

-42 31

9.33 0.55

U629

9.59 -294 934 -446 2.108 30 Oct 80

9.59 -287 941 -454 2.109 2 Oct 80

9.56 -250 947 -451 21 Sep 80

9.56 -285 947 -458 2.127 24 Nov 80

9.58 -280 939 -454 2.129 25 Nov 80

9.57 -285 942 -453 2.128

(RT)

9.33 +0.229 20 Nov 80

9.32 +0.225 21 "

9.32 +0.227

142 (X) (X)

1 22 25 42 31 91 85 7

1972

1500

959-~~870~~ 55.6 945-454-545

959-~~870~~ 55.6 934-446-210536.85

959-~~870~~ 55.6 926-454-450

✓ 1 R

8.33 + 685 + 13 (3)

8.12 + 0.245 2

8638 | 23 36 - 27 87

192-

238 58

8.32 - 268 918 - 545 5 dec 7

8.31 - 284 916 - 441 7 " "

8.30 - 263 924 - 509 12 " "

8.31 - 298 924 - 515 (3)

432 - 145 312

8.30 433 215 711 286 1 del

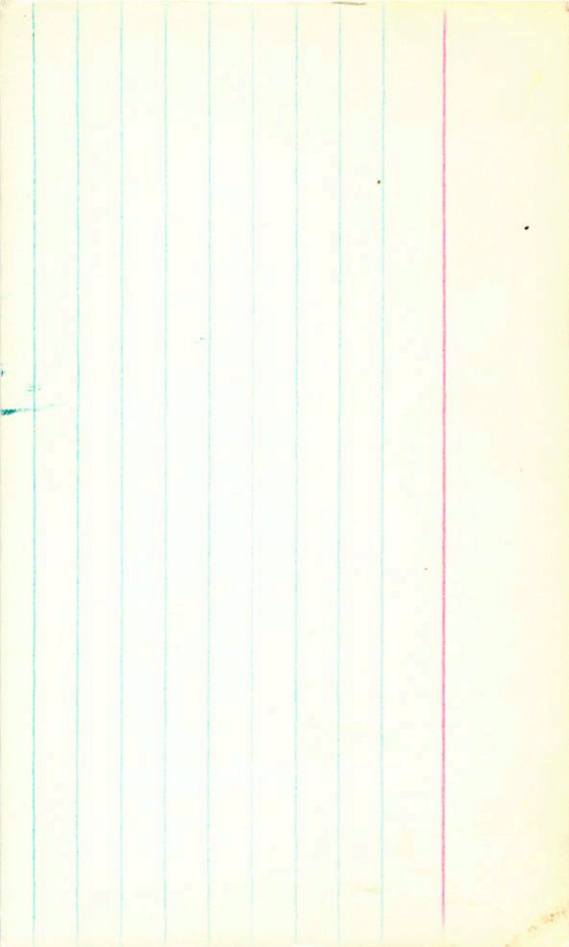
8.11 + 0.25132274

8.09 + 0.241922068

8.16 + 0.25181168

8.12 + 0.25 (3)

2506 mm



510194

1

24 05-50

55

115 120

596

9 Jd

10.01

~~10.310~~ 24 6.8.83

10.02

~~10.303~~ 30 6.8.83

10.02

~~10.302~~

ND

8434
-5825

1 26 15 -52 04 256 F7D

Week

(7) 212 -346 866 -523 2.128 27 Oct 83
(8) 8.11 -357 874 -495 2.124 27 Oct 83

8.12 -352 870 -509 2.125

(10)

HZ

9205

1

27 80

31 26

8.16 2.27

9205
100
110
120
130
140
150
160
170
180
190
200

221 125 770 2.241

8.13 - 474 905 - 149 2.240 75183

8.12 - 492 913 - 150 2.257 29540

8.12 - 496 909 - 150 2.257

9205
100
110
120
130
140
150
160
170
180
190
200

9205
100
110
120
130
140
150
160
170
180
190
200

9064^{Ar} 1 217 50 -20 00 535 R. W.

A

663 442 487

839-58 1192-423 9578

Ar

— 250 1868 8000
031 4503 3865

9029
~~6274~~

1 27 18 -48

11 944+73

654

(X)
(X)

9.46 -275 972 -453 21 Sept 80

9.47 -269 973 -464 24 Nov 80

9.46 -272 972 -458

(X) ✓

9.22 +0.229 20 Nov 80

9.23 +0.229 21 "

9.22 +0.229

(1985.5) 01 29 07.2 -40 55 18 9.3
9152 1 28 50 -40 57 66.2

9152

301714

(+) (+)

927 -267 931 -470 106.7
925 -268 926 -473 2.116 116.73

(C 647) ←

9262

41113

(B) (Y) (A)

2069

1 29 30 -40 46 23 332

9.45 -338 887 -495 2.117 867E

9.44 -327 (823) -474 2.120 267X3

9.42 -337 900 -503 2.134 21 Sep 080

9.44 -333, 896 -504 2.132 25 MV 80

~~9.44~~ 336 894 -500 2.126 (9)

RV ✓

9.24 +0.1916 20 MW 80

9.23 +0.19421 "

9.24 +0.1948

622 342-628
4130 880-838