

157 1950) 00 25 045 / 30 33 55.0

30-126

①

385

1071 1030 621 085 Aug 91

10.33 N

1284 1004 160

X

124 546 157

1951 1950
1951 1950
1951 1950
1951 1950

~~1355~~ 155 1551 05 25 07 -32 11 28

9/12 9.86 892 224 383 334 -DD6 (Ag 4)

X 1.1 1.1 7 22 082

190 612 720 082
1112 1113

164 1950) 50 25 33.77 -32 18 30.0

-32.142

224 383
10.15 N 10.53 998 574 +150 ②

1.22 950 0.228

124 950 224

1

.

081 del 1 0811

② 7.31 5001 64711

ON 248

2504

-34156

8.37 41 48~ 1230 92 09 0551 . 167

X129 1950) 08 26 28.22 3509 47.8
-35147 1187 863 117

8.5605

224 383

8.92 0.967 0.475 0038 1190
1.191 588 119

X 1.187 873 116 (2) 1.190 865 117

1.190

1187 863 117

~~111~~ 30 00 00 1.25 00 00

251
251
251

251

111 30 00 00 1.25 00 00

111 30 00 00 1.25 00 00

14584

00

27

204

23

31

174

252

1316 1170 0318 (2)

263 ✓

1323 1167 319 (1) YH

~~1322~~ 1164

1315 1164

1157 943

~~one chh 1511~~

~~PK~~ ① 102 hhh 8.511

HK
not hrs 8511

CH92

552822 ~ 27 26 22 20

1485 182 41851

95 1950) 00 12 5440 -30 26 44.0

30.58

8.8360 9.11 940 394 -023 Aug 91

X 1.164 777 061

1119 610
KCL 610
684

1111

+13.2721 1950) 13 57 01 +13 11 48

(1614)

GRUM

+30.2512 -152.084
pass 14 19 48 +29 51 40

(16M)

8.57 7.24

134270 1950

15 07 85

-55 095-

6/12/15

BS

and.

1000000

135913

1981

15

54

40

05 60 14- 50

FOR
GRIB

142591 600] 15 55 383 -71 46 47.9

71.1434

8.504

148

149910

-46.8115

8129 198

14557 16 36 09.66 -47 00 32.7

150090 11507 16 36 57.38 -33 38 47.8

-33.11303

6.59 63515

150331 1950] 16 38 30.93 - 03 03 00.0

HR642

32.11913

590634

5034 750 02 04 91 231

~~1918H~~

564051

SP/121

926

(231)

58 20 13- 05 47 00
PS31

126331

189
5.7

407

86418

B

1950/20 35 50.70 -75- 37 363

A.B. 3 17"
6.55 7.20

113778 (1450) 13 03 42

Jul 19 12m

4949

589 RT

13 45 48 -U1 51 -

~~11/10/07~~

120/12

S. J.S

R.I.I

An. Bright or
An. Bright

12/26/1

13 SP 08 -36 53 30

G2/13 II

9.30

123349 14 05 42 64 32.5

8.8
6-13.5

✓ 124602

14

13 03

-60 57

B.F.B

II/9509

26152

1450

14

72

42

-67

115

8.23

1205111

2585C1

1950/14 2308 -74 31 27.4

hull-

515L

5115
Opinion

12788 ✓ 148 14 31 40 -63 43

119509
9216

128425

1950j

14 34 18 -04 03 45

11400-

~~1151~~

0

129330

1980

14

41

18

-69

24.8

7.31

8-358/11

131029

(1570)

14

43

48

~32

13 03

668

8.8

ABJ

65 96-51 45 H1

Q851

Schlegel

132223
132223

(1450)

14

56

35

95-58 56

1498

208

04 5.12.06

~~189~~ 6.5.5

0082.214

→ 24. 5.5 41 + 40 31 51

(0551

697E081

7456

~~7886~~

18505

19509 19 34 58.25 +11 09 42

11.00 60.56

HP
7476

19 34 30.5

711 09 42

6-011

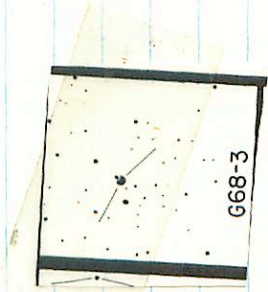
~~5-586~~
5-585.9

G-68-3

23 10 49 +20 40 24

Automa

G.74-10.80



G68-3

6.182

1950j

54

57

50

top

42

36

1005

6279

1950 19 13307.5

-45 57 54.0

1967.750

9.26 1835.5

dm=0.001

1967.750 (X)

877-23 1551 22 50 20 51 060

1204 0162

Rhythm

22-1988

1980) 23 34 31 -59 46 0/5

60.7664

-017 000

940

68.1189

142456 (2000) 6 11 2.14 714 28 30

all
KSD

8189 1950) 01 ~~22~~ 22 03.5
-54 ~~04~~ 21 64

1065622

G73-56

1950) 02 23 12 405 40 24

1249 to 78

Raymond's note

11.569 (1450) 02 57 24 - 11-32-06

10.53 10.55

~~157849~~ 3 02 29 76 22.3

83/24

0129
6089

15.7-118
19

19/10

0231
318

2225 1950 03 32 24 F18 44 00

Redmond

7:45M

Jim-49 (1950) 04 16 14-13 19 36

1152 +047

654-16

1950 06 04 57

65 60 60-07 09 54

1124 4048

✓ 180022

2000

6-21-40

SO LIA - 417 OS

180022

8-27-48

62404 1950) 6 40 43 - 49 20 16

48632

864
1950

1950

2008 07 13 00 28 36 00

2008

~~19556~~

15055

15055
2008

~~7/12/50~~

1.1

7/12/50 1950) 08 23 57 + 12 49 1

Subno

5:50 M

~~9/15/15~~ 8 26 72 92 165

8-51-15

1481 1200