

-6001501

2402-75

10 34 20 -64 02 77 AO

307860 (A) (F)

NO

2374

93405

10

94

45

~~47~~

~~09.59.23.15.2~~

130127

white wings

~~Study~~

HO50566 → HA Be

≡

Abu AF4401

ppps ← HA 14.34

-014-012-198

90564 -6301413

~~10 24 80 -64 01~~

8.75 +16 ~~88E~~

90661 -6201577

~~10 25 35 -63 11.5~~

7.1 85.5m

90231 -6301411

~~10 26 05 -6.4 15~~

7.5-08<sup>72-8</sup> A0E

90837 -6201575

~~10 26 50 -63 25~~

84 +16<sup>-21+10</sup> A3E

91451 -6201624

~~10 31 00 -63 23~~

93 F0E

95785 -6301717

~~10 57 20 -64 17~~

9.1 +0.5<sup>-5+5</sup> F0E

-6301319

142-  
676

-4301524

924657

2602-18

ppp

1755200

11 7.4-9.7

RIB

10 38 35 -64 24

0955  
698403

7200

10 42 45

-60 28

7.56 +172

Van

7/2  
V.R.K.  
y

See Chart

2602-134

328016

10.59 + 0.98

2602-102

See Chart

60  
10.5 + 0.5

307935

Handwritten mark

60

Chart

See Unit

2602-99

307933

10 42 35

64.65.5

8.80+25

A

Sept 5<sup>th</sup> 1911  
Am Profit



2602-93

10 41

30 -63 51.5

599 +0.60

FV

307922

See chart  
JL VS W  
D

(Hyden)

HR557 ✓ 3 05 10 79 04 / 5.67 FO  
16<sup>x</sup> ( 8.06 F

8 of Oct 2003 - 540 928 -41 2265 227079  
5.70 = 541 915 -52 2271 217079  
-537 926 -20 2.266 -  
5.72 -540 923 -38 2.267

8.07 -431 850 -413 2.194 217079

808 808 114 -411  
-421 895 -407 26 Jun 8 2.180  
808 850 -412  
808 891 -411 2.183  
2.186 (3)

981 A 5.73 -540 925 -41 2.265 22 NOV 79

870 -541 915 -52 2.271 21 NOV 79

5.71 -537 933 -42 2.270 21 NOV 79

5.71 -535 925 -45 2.269 ④

8.07 -481 890 -413 2.194 21 NOV 79

8.08 -480 890 -412 2.193 22 ...

8.05 -448 889 -407 2.178 ② 1515

8.07 -436 890 -411 2.185 ④

Stone

981

3

08

33

-79 06 5.56 FOT

26 Jan 73

564

-537  
-593

926  
940

-020 2266  
-065 2275

16" } 2.5

5.64  
5.69

162  
160  
167

179  
187  
183

855  
877  
800

2.753  
2.769  
2.770

23 Jan 73

2 slots

8.05

279

159

469

2.656

63  
15

8.05

283

173

454

2.653

20 Jan 73

8.05

-421  
-477

+881  
+895

-362  
-407

2.177  
2.180

26 Jan 74

mem

280

164

474

2.654

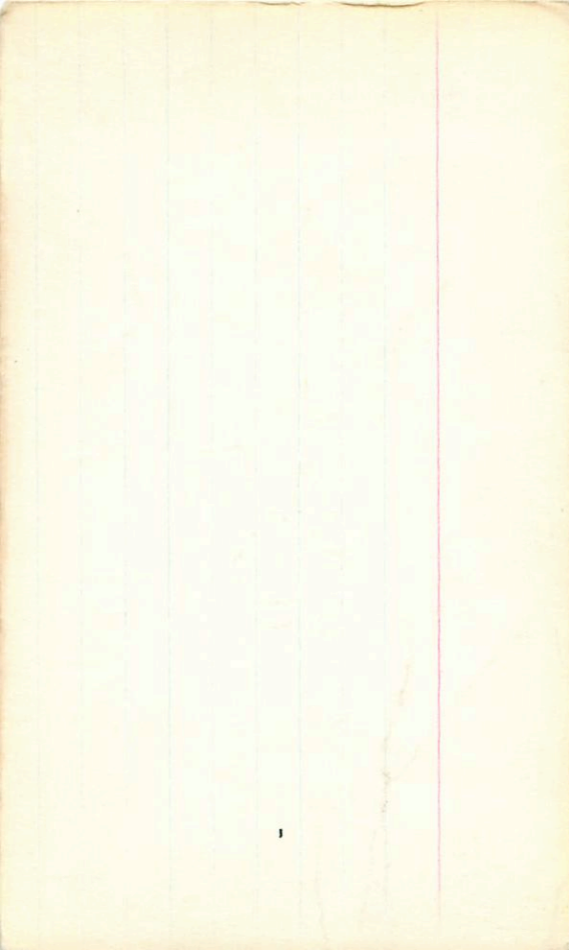
.281

.169

.494

2.674

2 slots



3 20 25 +49 00.5 6.1 dFS

1001

✓  
✓  
DBP

654 - 404 884 - 360 2.173 11 Oct 80  
556 - 412 888 - 344 2.174 20 1 69 m  
555 - 405 885 - 350 2.170

Ⓟ Ⓟ

Uganda

22328 3 34 564.120 + 20 00 26 dfy

400 + 3.9 040

2.165 12880  
2.164 2" 80  
2.165 10780  
2.164 23 cent 76

Ⓟ

2.164

2.48 -351 867 -350 24"

2.51 -355 911 -371 24"

2.47 -403 900 -378 28"

2.49 -396 900 -380 2165

✓ ✓

2.44 308 173 532 1454 2.12B

26.5 590 470

5.5 5.7

US

7.38 + 0.175 29.026

7.52 + 0.18 13.026

7.34 + 0.13 25.026

7.45 + 0.16 27.026

7.48 + 0.10 28.026

21576



1124 / 03 44 05 +67 08 5.7 F3D-II

✓

Rows

6.9

584-488 909-158 884-885

2.231 2016.80

582-495 919-174 584-885

2.226 21

583-492 914-166 582-885

207 886 911 988 2070

212

repeated

5 sec M

25153 ✓ 3 59 10 + 14 15 8.24 dF6

8.28 ~~387~~ 857 - 384# 2.169 12480

8.24 = 398 976 - 402 2.188 21

8.27 = 393 866 - 355 2.175

~~316 153 516 2.621~~  
2.45 2.45 2.53

12576 ✓ 4 02 50 708 085 8.16+36  
 (TR) Hyderabad

545 486 878 - 258  
 545 485 896 - 328  
 545 480 886 - 310

230b 1080  
 228 11"  
~~228~~ 11"  
 247 110 111 7197  
 247 110 111 6142

(245) (228)  
 2692 2692  
 2692 2692  
 030

(2) 4502 409 091 442 445

1668 ✓ 05 09 15 +46 55.5 5.5 d13

Aggr ✓

5.70	-423	881	-247	2.186	200.80
5.68	-427	886	-311	2.184	21
5.69	-425	884	-304	2.185	

2132 ✓

06 03 35 +42 59 5.5 AFM

Bygg ✓

543-492 883-206 2.215 266/80

540-492 882-204 2.217 28"

542-492 892-206 2.216 29

542-490 886-205 2.217

216 1686/2

185 ✓ ~~181~~ ✓

Hyale

✓ HD53582 7 04 48 +22 44 8.26 +70

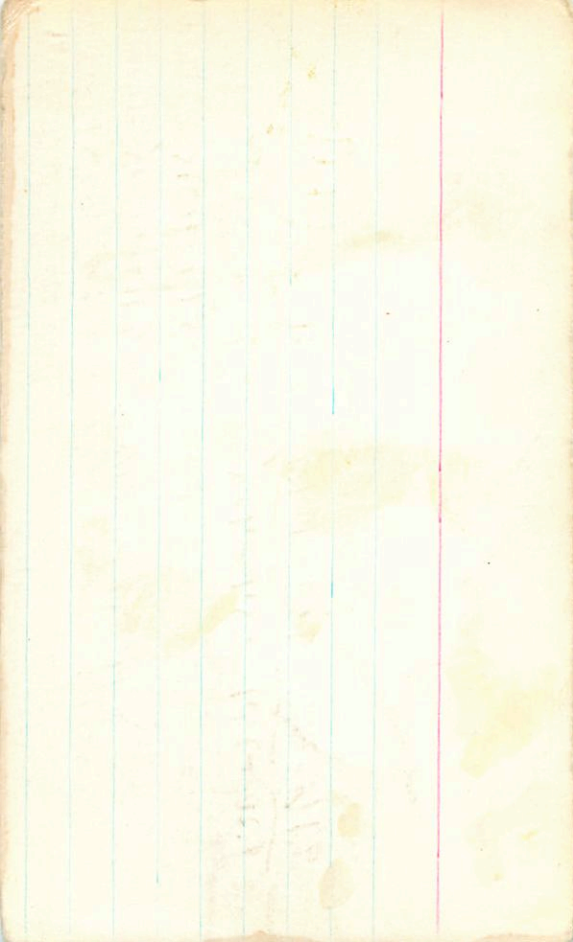
181

8.24 ~~544~~ 956-426 12 June 5  
8.16-243 953-424 3 June 76  
8.20-244 954-425

8.03 +0.235 3 June 77  
8.07 +0.215 27 June 76

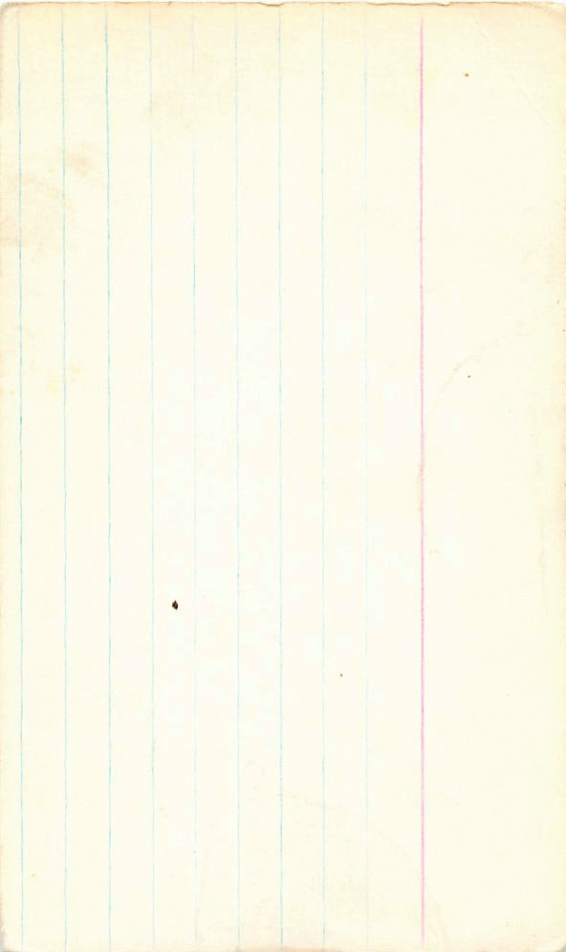
411 ✓ 223 444  
8.10 +0.240 20 Nov 70  
8.03 +0.235 3 June 77  
8.20 +0.25 13 June 76  
9.09 +0.241 ③

8.10 +0.215 21 Nov 76  
8.20 +0.25 13 June 76  
~~8.07 +0.20 27 June 76~~  
~~8.10 +0.23 4~~









Key

66653 ✓

8

01

15

51

-46

16 2.5560

2.55 + 66 + 15 05

2.55 - 307 950 - 464 2135 27 Jan 36"

2.52 - 306 926 - 452 25 Mar 78

2.53 - 302 919 - 465 26 "

2.52 - 315 932 - 460 2135 17/81

2.53 - 308 932 - 460 2135 79

7.32 + 0.21 (2)

401 202 449 2605 (4)

3062

-53012

00

37

30

-55

18

984-33

Σ 88

✓ div 3532 # 649

65799 ✓

96794 ✓

11 01 30

11 07 05

-58

-58

39

11

8.0

7.0

680

1020

85204 + 0.92

NR 8.02 -112

802 -104  
802 / 108

1102 -372 = 5mg 80

1088 -370 = 6.11

1095 = 371

994 + 456 = 1450

994 + 380 = 1374

994 + 350 = 1344

PR 203 + 82

205 + 506  
204 / 704

1436 - 575 = 861

1431 - 575 = 856

901

111 204 + 188 = 392

111 204 + 188 = 392

881 + 188 = 1069

648 + 435 = 1083



BPV4 ✓✓

8 17 30 -45 19.5

EW  
136

129-128

-44 02460 8 17 25

(X)

-45 18.5

12.81 -173

1048 -520

06:20 62080

10.1 72

12.65 -174

1015 -541

04:50 23219060

12.24 +0.343 25 Jan 10

06:20

12.71 -177

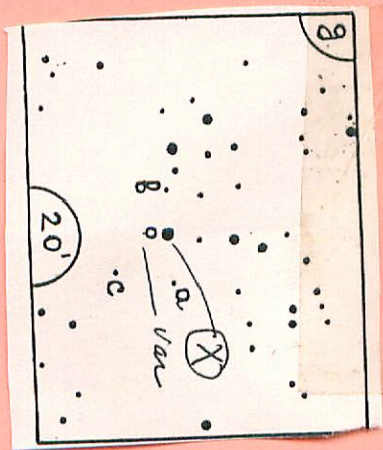
1035 -545

07:30 25 Jan 12

04:55

12.22 +0.340 26 Jan 10

12.24 +0.343 06:25 42191



CP

~~CP~~ Vol

8

47

30

-45

39.5

cap of  
131-138 85



EB-1542

BA 1.08

EQ Vol 8 43 05

-45.0 / 110-12.2

~~140-11.7~~

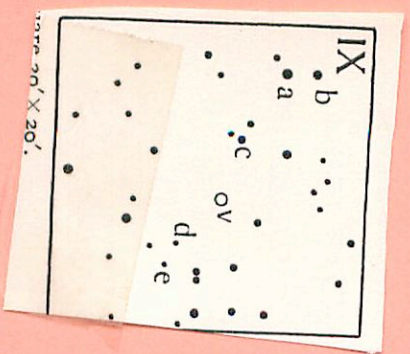
-440 2482

B7

B.D.V. 8 44 00 -43 01

12.0 13.0 13.2<sup>d</sup>

EA



Scale 20' X 20'

12-11-11  
11/11  
11/11

AS vel 08 04 00 20 30 34- 57.5

Arrival

08 05 15 - 46

39.5

12.2 - 13.4

d  
0.64

21.9

17.52

B0 del 8 14 40 -45 43  $\frac{138}{0.33} = 420$  EW

AZ 64 8 22 10 -43 45.5

12.7-13.5

EA

0.8

05 8 34 25 -48 37.5

$\frac{150-151}{50}$  0.3



2323-F

11.36 + 22 - 01

17 + 148 498 2.56

11.44 - 574 + 884 - 019 2.478 26 Jan 75  
→ 11.44 + 175 + 146 + 877 2.585

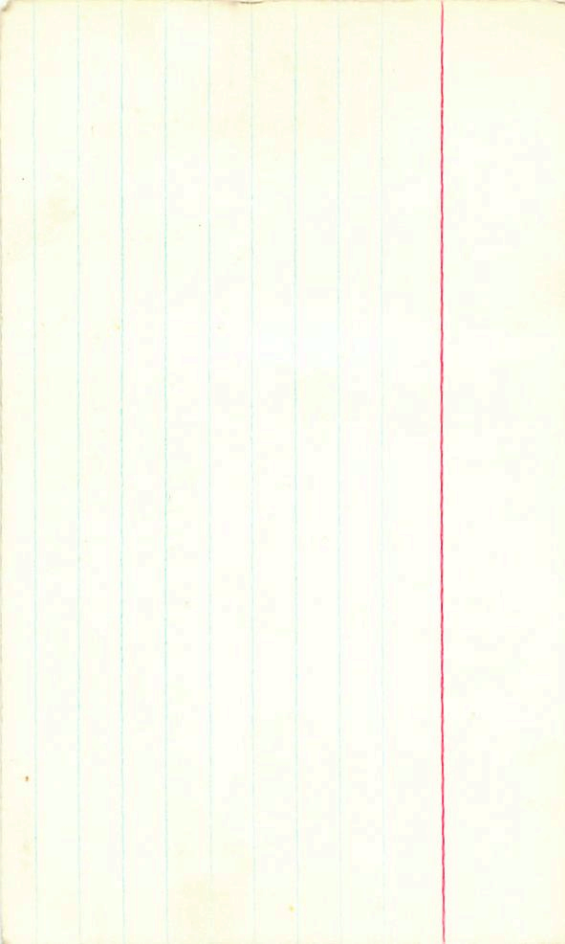
11.44 - 518 865 + 36 2.469 26 Jan 75 No

11.63 - 648 868 + 96 2.334 23 Jan 75

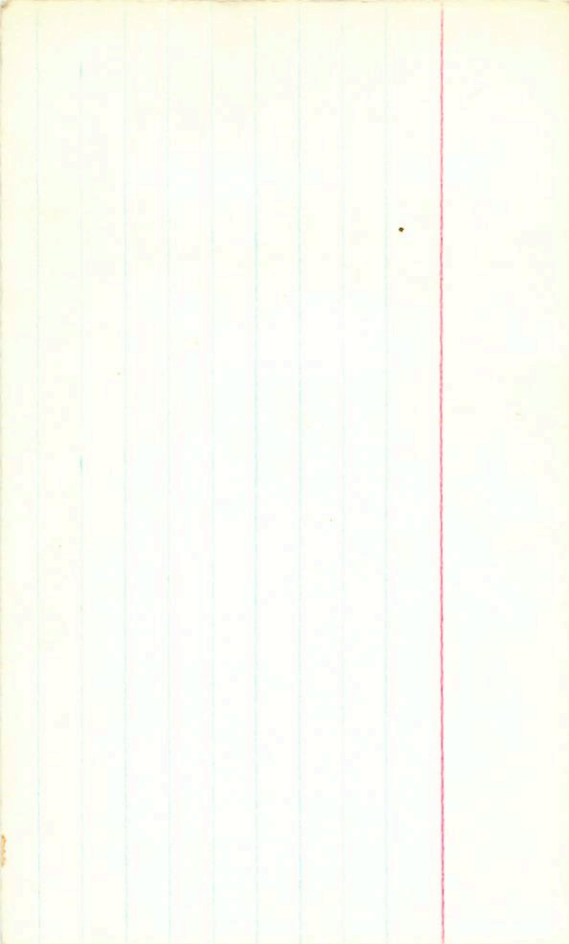
11.63 - 612 847 + 86 2.322 27 Jan 76

11.63 - 620 958 91 2.330 (2)

175 877 1058  
254 4 1270







2.751

10.8

74	123	565
		246
		514

498 11

2343-12

115	+69	2.705
155		

Simple

1081 1026 1815 - 2222

---

→ 10.81 + 1154 + 1801

1268<sup>2</sup> + 1801 + 1154 + 1801

865 + 880 + 511 + 1801

---

10.81 - 560 801 2222

10.81

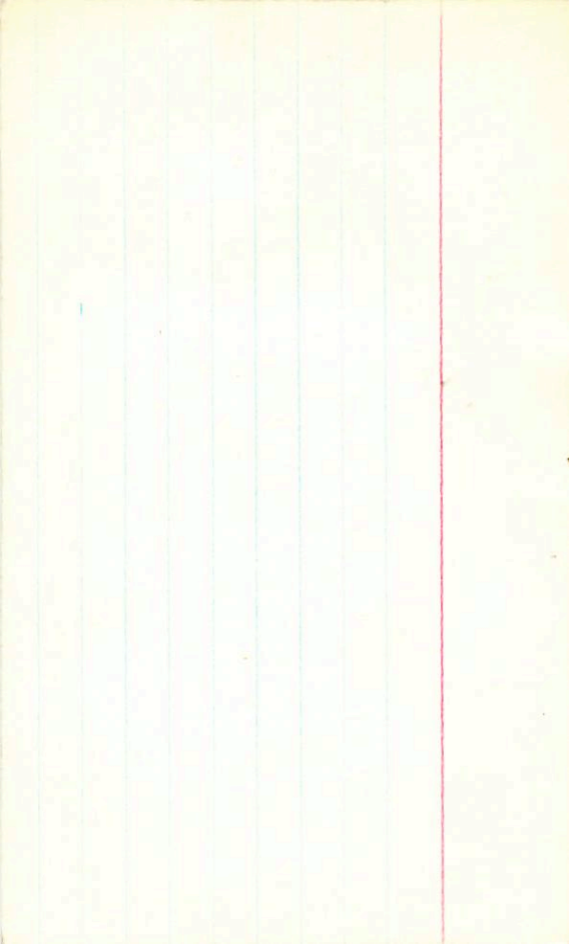
---

995

---

10.81

-10



Non number

+42

19

1.50

1.12

-105

+17

+1.14

2.575

10.3

10.36 - 63.5

+ 912

+ 228

2.104

26 Jan 75

+106

+171

1.134

2.567

~~2.567~~

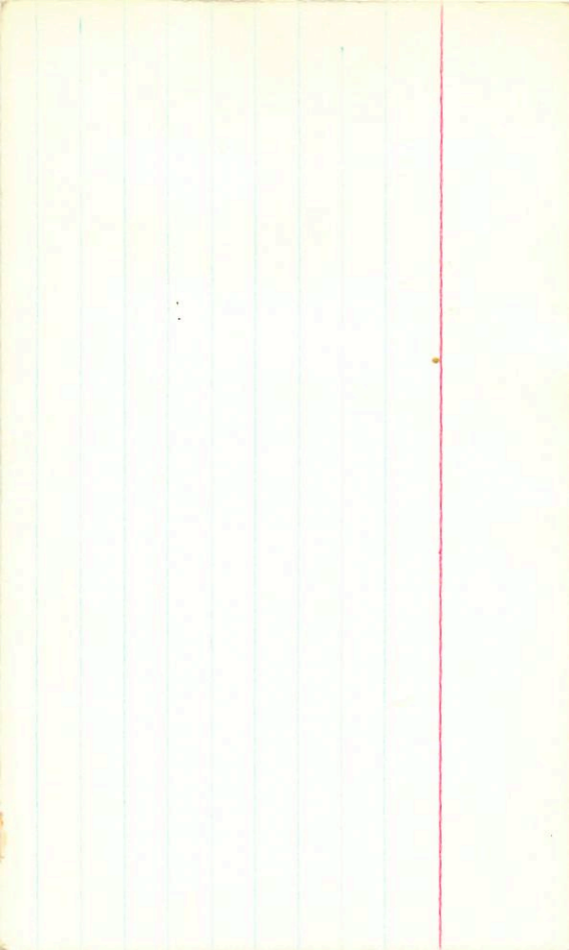
10.36 - 579

898

273

2.095

2.095





2342-10

413

409

461

7.73

10.7

10.76 - 619 + 816 - 266 2.256

26 Jan 75

→ 10.76 + <sup>245</sup>133 + <sup>123</sup>83 + <sup>589</sup>626 2.746

10.76 - 863 802 - <sup>-299</sup>221 2.247

-0.5  
9.95  
10.45

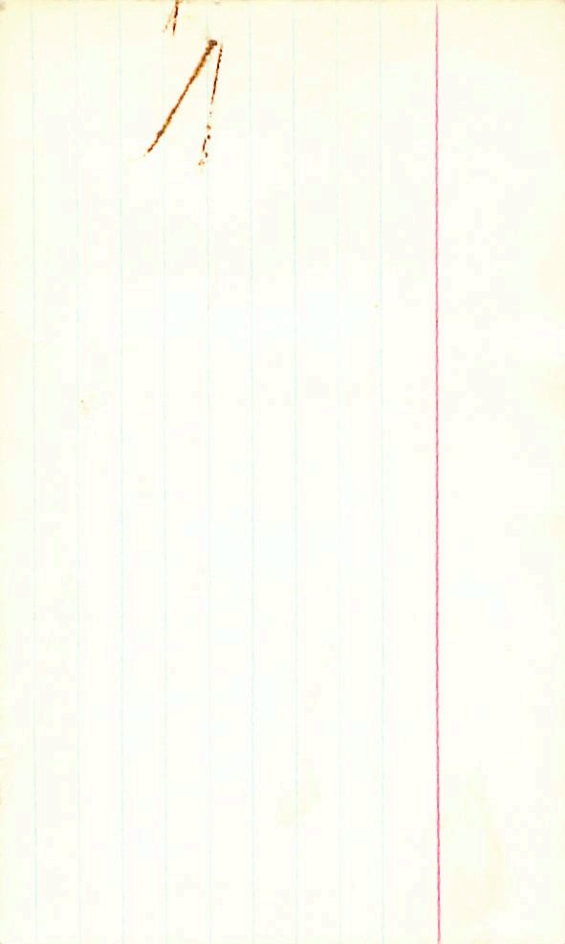
2.730

19

415

585

115



641/ 2 12 15 +58 28.5 6.5 43.5

✓ Pen

644 ~~231~~ 692 +270 2.141 110.580

B5 Jul 8 29 00 -41 30

↑ Time

132 - 145

-544

00:30

13.96 - 31 057 - 544 6.780

10 sec w ) 7.4 139  
2.5 w )

13:03 +0.651 25 pm 10 (06:30)

13:10 +0.601 26 pm 10 (04:40)

3 ( 10:48 +1.148 42 pm 91 (06:30)

13:11 +0.594 10 pm 94 (06:00)

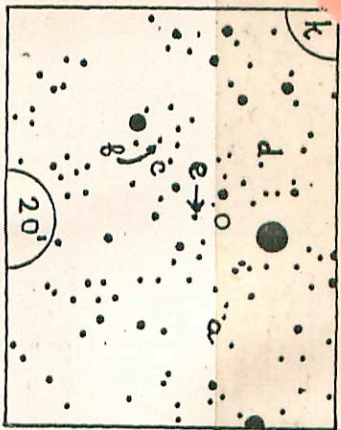


FIGURE I.