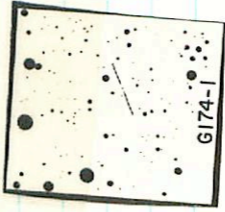
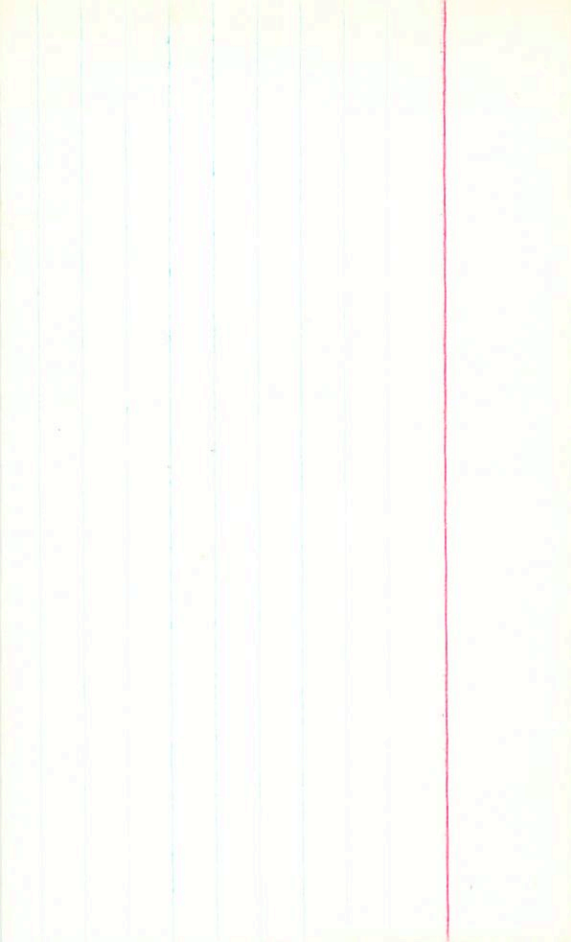


178+3

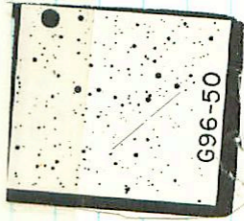
174-1 2 29 32 + 57 16.5 1.10





15.8 +3

96-50 5 42 16 +40 57 1.25



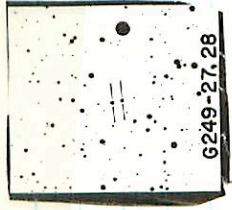
5

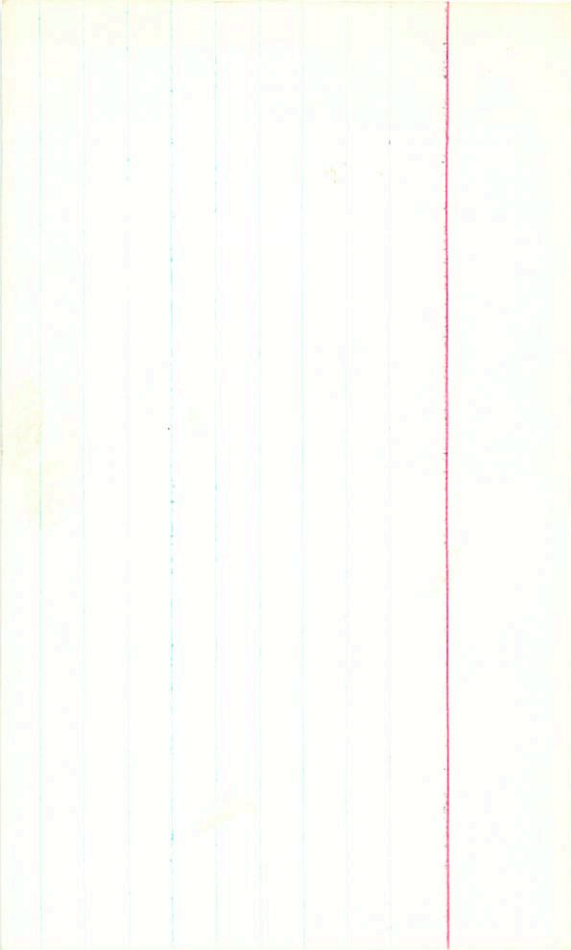
1-19

249-27 5 SA BS SA 768 09 15.373

hc

14872





129-47

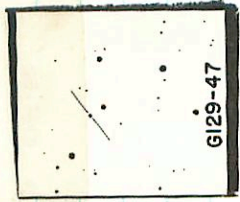
23 56 24

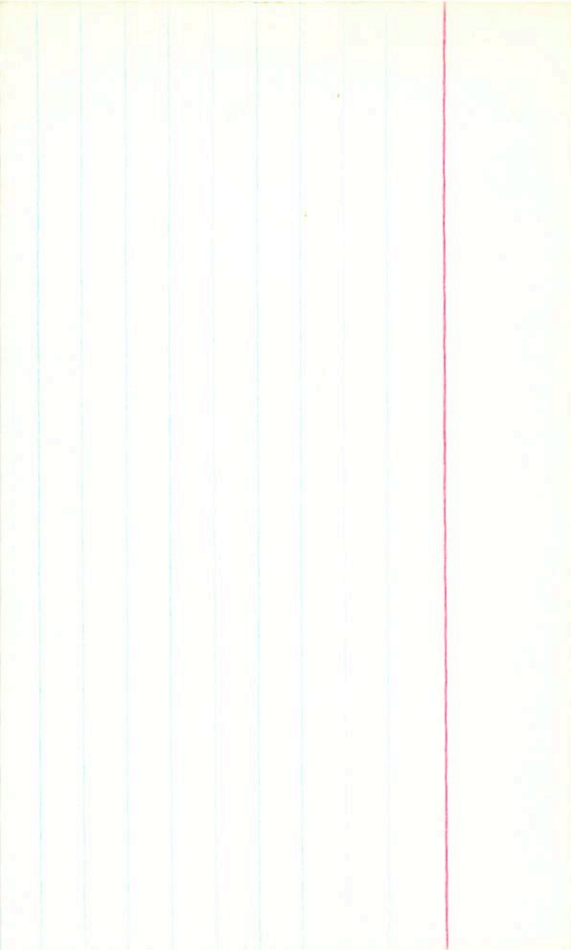
33
43

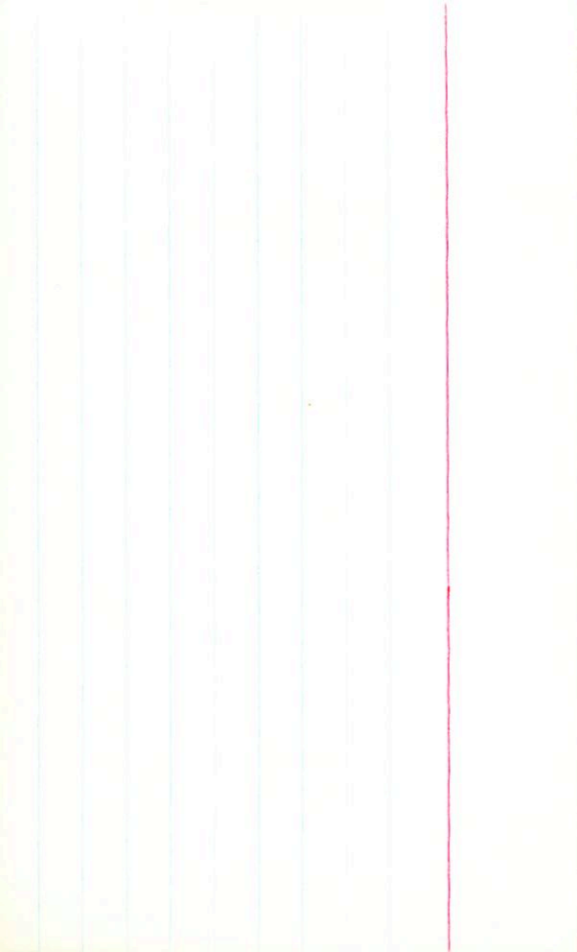
10.5

1.48

134 + 2







128-34

23 07 09

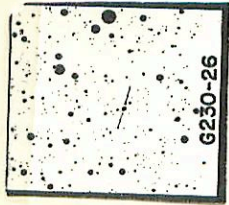
+31 32 1.49

15.9 +12



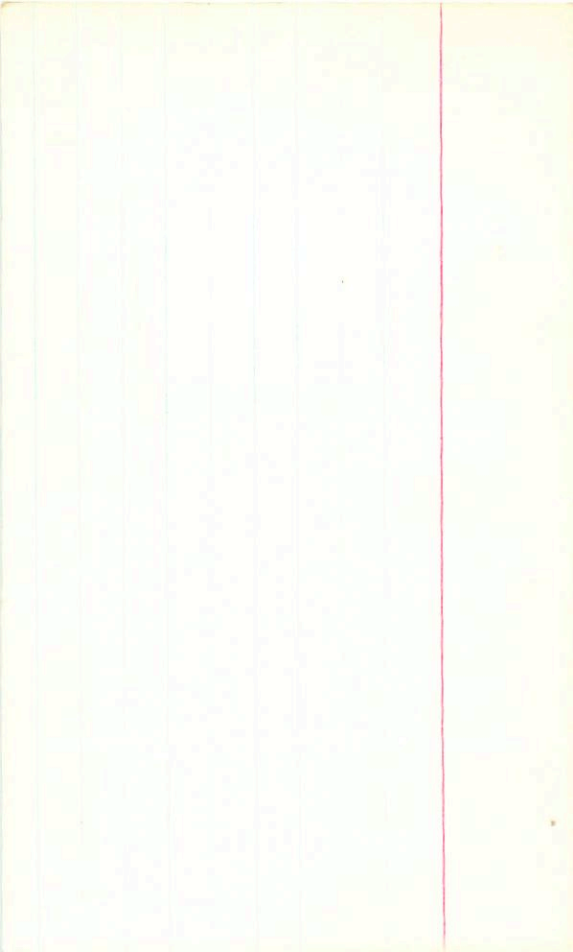
1.43.

230-26 20 04 32 +54 22 13.3+3



49 93245
495113

83 1333



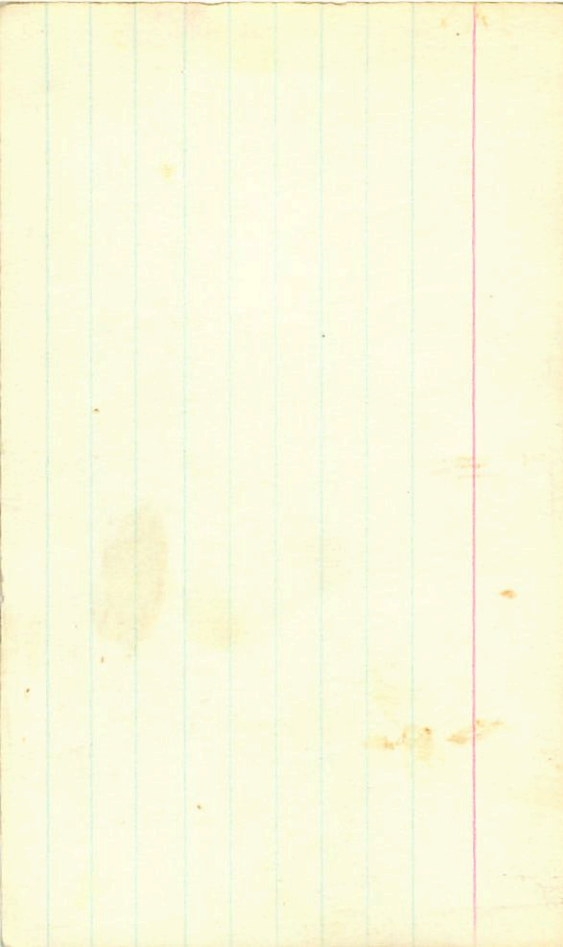
n=0.15

L68 17 33.2 -54 24 46.3 +0.9
15.6

✓ mod 37.4 ~54 25

34.03 22.6

15.95 +0.52 - (0.50) 10 mm 67
15.85 +0.48 - 0.36 11 mm 67
15.90 +0.50 - 0.48



6-TT 6999 17 33.2 -54 24 15.65 0.45 153

246 1318 139

15.64 +0.38 -0.53 25 July 1968

15.55 +0.52 -0.50 10 Aug 67

15.85 +0.48 -0.36 "

15.50 +0.50 -0.40

15.82 +0.46 -0.45

107

50-73 → 00

12 ~~4~~

-72 00

←

06

11.4

00

15.5 + 0.34

~~00 144 44~~



L 218-28

BPM 16078

0:16.3 - 52:14^{'00}

13.9 .062 137

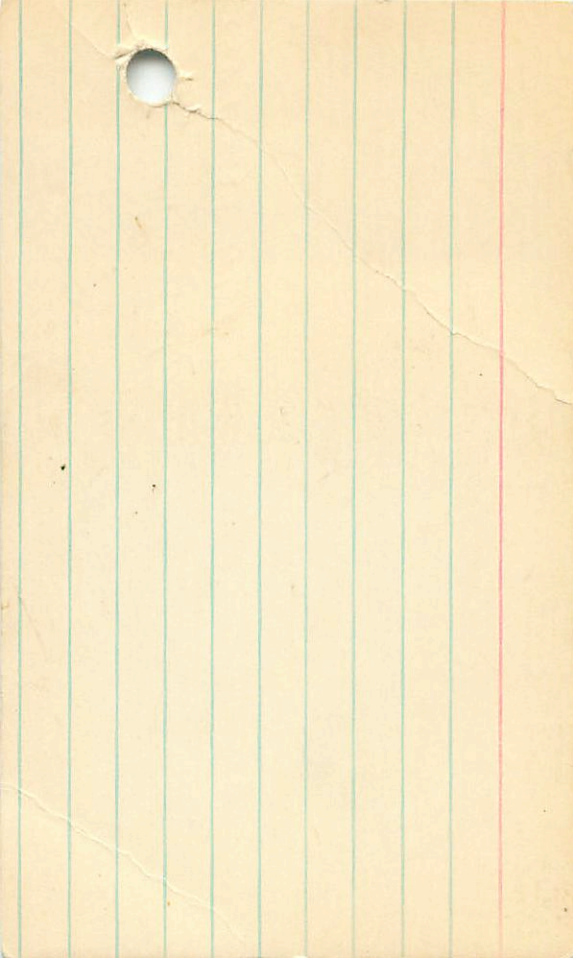
19.38 - 51.51.5

→ 14.6 + 0.16

26 Oct '70
Vance

Var 14.26 + 0.565 - 0.145

(1700) Bruce blue



L50-73
BPM 1595

0:09.0 -72:23

15.6 0["].34

0 12.14⁰⁷

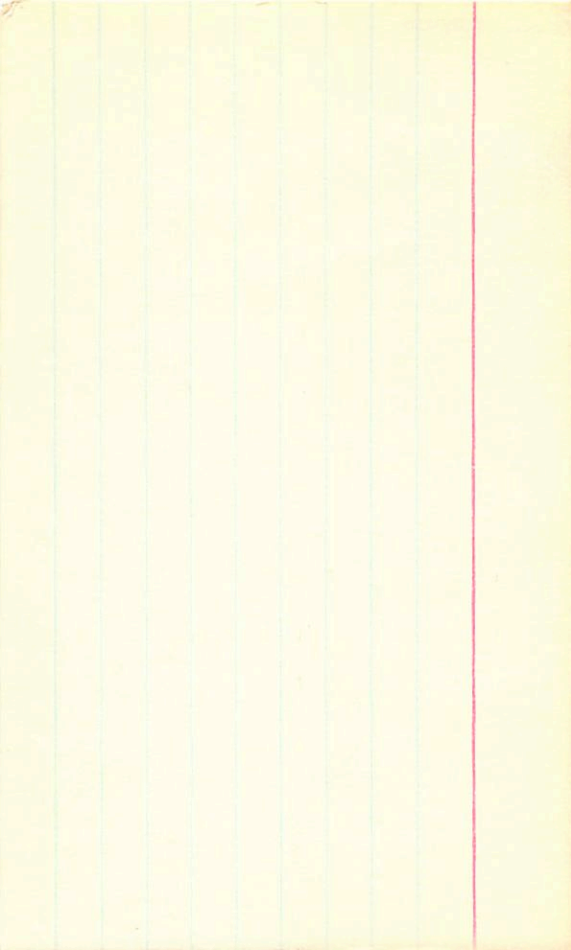
✓ 57.6
-72 00.5

15.8 10.33

50-72

CPD - 69° 1 0 59 - 00 ←
20 09 60 8 09
→ 44 89 - 02 5 0 60 4 3 09
→ 44 89 - 02 5 0 60 4 3 09

18.00 A0
μ = 065
✓



AGTmc 00 15 01 -72 12 1950

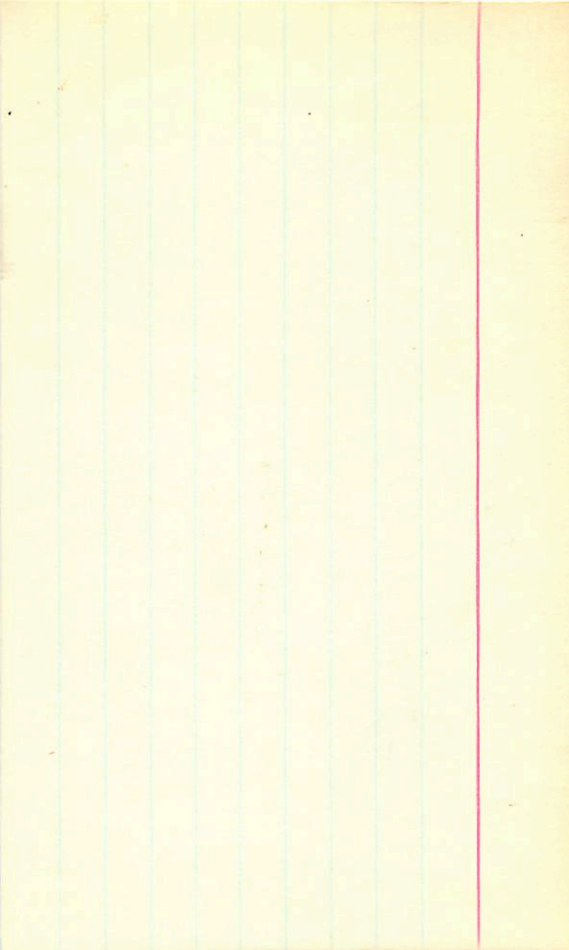
→ 00 15 49 -72 06.5 1967

10.5-10.9

d 0.54 w?

0.79 n n?

Med Chart



C-158-27

→

00 05 02 - 7
00 04. 12 ~ 7

- 7

42.5 2:03
47.9 15.6+4

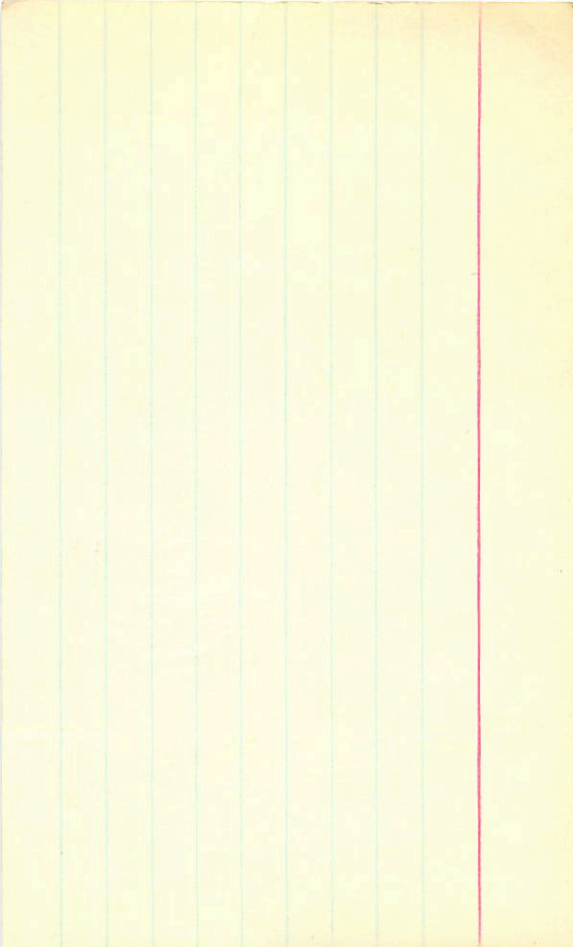
X X

✓

(Mud)

Blue

✓



L170-31

BPM 16085

0:17.8 - 56:14'00

14.8 .096 206

00 20.52 - 55.5%

21.05 48.2

15.2 - 0.05 / ~~one~~ more

Bruce blue

170-31

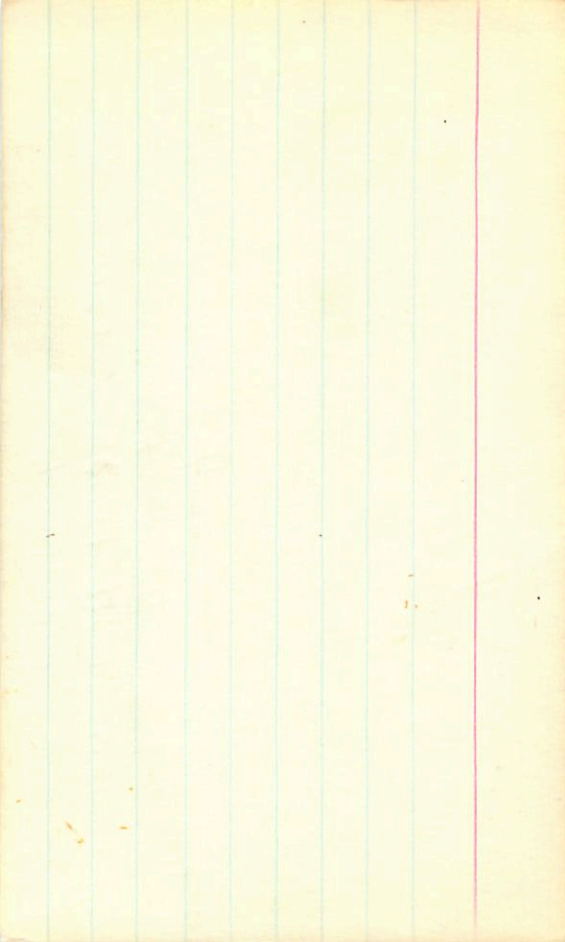
CPD -47044 0 24.5 -47 29 10.0 AS
1900

$$\mu_x = +014$$

$$\mu_y = -091$$

1965 00 27.16 -47 08

✓ ~~19~~ 10.16 +0.34 ~~→~~ 0.04 ✓ 8 10.16 41
10.19 +0.34 ~~→~~ +0.035 9 9 +0.35
10.14 +0.34 +0.035 - 10.14 44 40.5
10.16 +0.34 ~~→~~ 0.00 0.00



329

651-29

→ 00 3549 -21 03 ←
→ 0 349 -21 09 ← 14.2 g 0.32

①

..

a
 δ

m

μ

P

μ_a

μ_s

w

BR

No.

a	δ	m	μ	P	μ_a	μ_s	w	BR	No.

→ 18 51 24^{2.4} -38 39^{3.16} ←

18 50.3 -38 40 13.7 h 1.00

7491

489-58

Sp 16^m 12" 12"

270°?

✓ ✓

•
•
•

12.97 +0.89 -0.01 00/4

Agencia

5

L05350

LTT4210 11 20.1 -26 54 / 12.2g: 0.31 2870

11 20.1 -26 54 / 14.8g: 0.31 2870

12.56 +0.56 -0.13 25 mpLF

12.79 +0.56 -0.14 18 mar 67

12.74 +0.54 -0.19 13 "

12.76 +0.59 -0.19 16 "

12.78 +0.56 -0.18

14.50 +1.04 (0.70) 9 mar

14.97 +1.14 (0.54) 13 mar

14.93 +0.95 -0.69 16 "

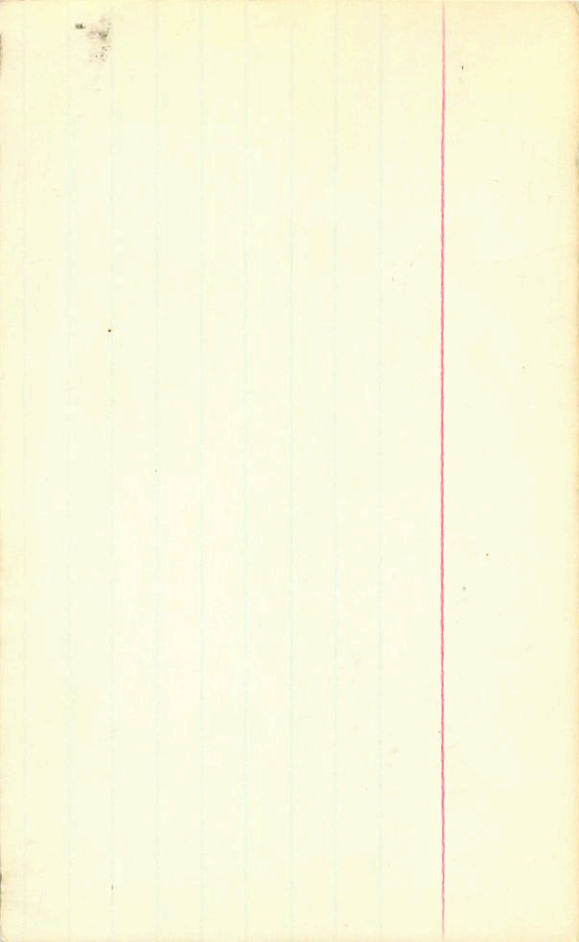
14.97 +0.98 -0.54 18 "

40"
0.540

12.73 +0.56 -0.17 (4)

14.80 +1.00 +0.53

→ 14.90 +1.00 +0.54 (5)



325 → 00 34 58 -60 07 ←
0 34.2 -60 13 14.3 f 0.28

122-4

'
'
'
'
'



L 291-66A_B

0:37.2-48:02'00

14.5 wk 137" 2°5
15.5 red

✓ ~~do B~~ one each
+ each

0 40 07
-47 39.5

Bruce yellow

B

