

6 Lyr  
7262

178475

19 05.5 +36 01 B6

5.29 -11 -51 +05 15

~~088~~ 78;  
+0039  
-00020 -0024 W350  
W25

-0024  
-002 -005

-029 082 491 2.652  
074 497

19.1  
+36  
-2.5  
-5  
7.9  
-A:

189  
6 8 15  
One or two

5.15  
-2.75  
7.9  
5.1  
2.8  
7.9

19.100	
36.000	7262.000*
-2.500	
-5.000	19.000*
7.900	5.500*
380	36.000*
<del>-10.000</del>	1.000*
-26	0.002*
0.312	-0.002*
0.872	7.900*
-0.377	380.189
-23.656	-18.000
-2.201	-0.005
	-0.378
0.345	
0.266	4.773
0.900	
-9.615	0.001
-19.859	0.900
	-15.908
-0.885	
0.411	-0.012
0.217	0.219
-1.2	
-4	-8.610

~~7258~~ 19 04.7 +41 20 B3 12

178329 6.49 ~ 16 -65 +04 12

Sp.B 1.03

2.690

-060 093 330

082 342

164  
506

6.25

-1.35

7.7

-212

+6001 000

+10115  
+1005-101

7258.000\*

19.000\*

4.700\*

41.000\*

20.000\*

0.005\*

-0.001\*

7.700\*

346.737

-21.200

0.003

-0.296

7.316

0.007

0.920

-16.938

-0.023

0.258

-13.389

7257 5.87 -09 1.30 -16 07  
19 06.4 -41.58 852

178322 sp.0. 12.5

(-015 095) 516. 2693  
092 519 5.65  
 $\frac{184}{703}$

(+133)

-006 -007

$\frac{-1.6}{725}$

7257.000\*

19.000\*

6.400\*

-41.000\*

-58.000\*

-0.006\*

-0.007\*

7.250\*

281.838

13.300

-0.003

-0.931

-13.147

-0.041

-0.072

-12.472

0.015

-0.358

-0.442

7210 18 59.8 +50 27 82.5 10

177003

5.37 - 19 - 76 + 03 09

-080 090 245 2675

076 261  
152  
413

5.3

+0002 +012

-1.5  
6.8

-19.0

+0019  
+006 +011

7210.000\*

18.000\*

59.000\*

50.000\*

27.000\*

0.006\*

0.011\*

6.000\*

229.087

-19.000

0.057

-0.154

16.084

0.012

0.931

-14.841

-0.008

0.330

-8.196



7200 18 59.2 +20 46 BATE-IV

176819 24.13 16.0 6.68 +02 -70 +26 78

099 027 133 2.640 5.9

(-10.3)

0880 -001

-2.2  
9.1

Handwritten note in a box: +1005-001

7200.000\*

18.000\*

59.200\*

20.000\*

46.000\*

0.003\*

-0.002\*

8.100\*

416.869

-10.300

-0.003

-0.602

4.956

0.000

0.789

-7.948

-0.017

0.126

-8.314

7179  
18 57.1 +40 37 BY 14

176582

6.21 -16 -66 +04 12

-055 095 326 2.667

075 337  
150  
487

+002 +05

61

+0023  
+006  
+009  
+001

-205  
8.15

7179.000\*

18.000\*

57.100\*

40.000\*

37.000\*

0.006\*

0.004\*

8.150\*

426.580

-19.000

0.025

-0.315

16.713

0.014

0.908

-11.177

-0.018

0.276

-13.013

7173 18 56.9 +10 04 B → E p

176304

6.75 +25 -44 C +475 1925

~~172~~

→ 8:

18503 180

259 -034 340 : 20616

+012 308

535

18044  
1000  
1000  
1000

$\frac{24}{332}$

$\frac{-3.4}{8.775}$

7173.000\*

18.000\*

56.900\*

10.000\*

4.000\*

0.007\*

-0.001\*

8.750\*

562.341

-18.000

0.006

-0.732

16.738

0.009

0.679

-7.073

-0.032

0.050

-18.683

2128

18 530

-23

14

88

(514)

5-93

00

1-34

5.91 + 0.47

0.68

141

96

48

2.671

151

639

151

784

15.5

166

$m_v = -2.8$

5.45

1000g x 1000

1000g x 1000

5.45

7.16

7128.000\*

18.000\*

53.000\*

-23.000\*

-14.000\*

-0.001\*

0.002\*

7.550\*

323.594

-15.500

-0.000

-0.957

14.784

0.007

0.213

-1.111

0.008

-0.196

5.675



White

7119 18 51.9 -15 41

175156

475 029 482 2.628 -3.0  
2752  
128

460 437  
120  
559

E = +15

-8007 M +3.5  
-010 Bet 4.110

-35

-0006 ~ \$6  
-0010 69

7.9 509 173 016 454 2.617

-0000

010-800-010

7119.000\*

18.000\*

51.900\*

-15.000\*

-41.000\*

-0.000\*

-0.010\*

7.900\*

380.189

-3.500

-0.021

-0.935

-4.813

-0.055

0.328

-22.207

0.013

-0.135

5.342



7121.000\*

18.000\*

52.200\*

-26.000\*

-22.000\*

0.013\*

-0.054\*

4.250\*

70.795

-11.500

0.000

-0.963

27

11.088

-0.210

0.162

11

-16.728

-0.159

-0.215

15

-8.766

B5 II  
B5 III

18 51.9 -15 40

7117

<sup>-12</sup>  
5.10 + 17 (1.32)

17556

18552

2572  
2628

120  
136  
124

01284 0204 2114

136  
124  
135

11  
14

210-1009

2290  
2062

210-1013

2.0 ± 0.2

267

509 123 16 454

68 + 37

519 068  
419 134  
38

596  
2005-01  
22-20

89-20  
MV -3.65

7119.000\*

18.000\*

51.900\*

-15.000\*

-40.000\*

-0.006\*

-0.013\*

7.9

7.650\*

379

338.844

-2.000

48

-0.022

-0.935

-6

-5.658

256

-0.064

0.328

-25

-22.376

-0.002

-0.135

0

-0.363

53.25  
52.71

4106  
+36.5

15  
+86.5

(12)

B6 IV

18 49.9 -12 +36 25

7115

210

174541

7.2  
7.2  
11- 80.9

706 18

-004-012

20.7  
55220

+20.7  
+35220

+8011 +828

+034

-031 050 180

445 454 454

2.707

1996

+20.5

694

105

54.5

1000

891

125

8008

+0010  
-6006

-0260.56  
+088

7.1

50.971

1912.1

24.4 120.5

80.977

40.5

1957.5

110 -0.15

50.979

-25

40.33 -23

110 -0.11  
-004 -0.12

112 Nov

7113

18

50.1

~~421~~

21

174933

Sp. B. <sup>d</sup> 6.3

5.41

mm

~~035 123 584 2755~~



18.800

36.500

-6.000

-2.000

7.100

263

-7.200

0.247

0.888

-0.387

-14.067

-0.910

0.388

0.276

0.879

-11.491

-9.354

-0.888

0.368

0.277

16.812

2.429

18.800

36.500

-6.000

-12.000

7.100

263

-7.200

0.247

0.888

-0.387

-56.168

-11.984

0.388

0.276

0.879

-24.553

-12.790

-0.888

0.368

0.277

-0.614

-2.155

7109

18 45.7

+18 81

54

85.7

092

(12)

121

6.13 +0.37

090

10.7

27/6A ⊕ E, Brown

6.55  
6.88  
20.7  
24.0

18.8  
+13.9

-3

-6

5.9

Double  
line vertical

MV = -0.20  
VV 5.70  
5.50

.351

44325

$\frac{0.24}{-0.12}$   
10000

15124

-0007734  
-0007

-01472-9  
-0115  
15937  
15067

-0001

52  
1586

44321

$\frac{-1.15}{3.14}$

-0006-010

-00040055

15.78  
-83  
195894

-0054

15.25

-003-006

15.62  
32.4

443415

$\frac{-3}{3.41}$

412  
94

- 0.000  
- 0.446  
0.114  
- 0.423  
- 0.064

- 3.361  
- 2.207  
0.706  
0.592  
0.300

- 3.405  
- 2.496  
- 2.202  
0.571  
0.247

0.000  
0.151  
5.900  
- 6.000  
- 3.000  
13.900  
10.000

5.9  
15.5

15 SK. 6/15/5

Blup  
gms

18 48.2 +33, 8 Bra

MVC

17438

3.24

3.41

104

-55

5 V2

em.

2858

14

14

+067+070+313 ④

20553

2012 FEB 4

-19.2

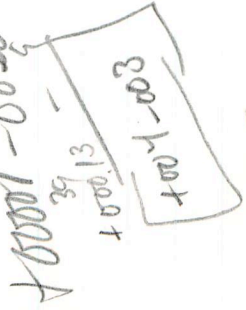
0.47  
1.19

E = +22  
V0 = 2.75

3.2

-21  
-71

mV



7106.000\*

18.000\*

48.200\*

33.000\*

18.000\*

0.004\*

-0.003\*

6.800\*

229.087 3388

-19.200

-25

-0.008

-0.436

7.1

+94 6.633+7

0.003

0.863

-156

-20.6 -15.938

-0.022

0.255

-12.1 -10.005

-121

8 Lyr  
2018

18 47.9 +32 45 B3 IV

585461

5.50 -16 -72 +06 15

5.91

-051 074 253 3.660

065 599 5.7

202

+1002

+1005  
+1006  
+1007  
+1008

130  
393

-1.91

9.65

7100.000\*

18.000\*

47.900\*

32.000\*

45.000\*

0.006\*

-0.003\*

7.650\*

338.844

-16.500

-0.005

-0.445

5.567

0.006

0.859

-12.036

-0.031

0.253

-14.576



7105      18    49.5    -80    48    85

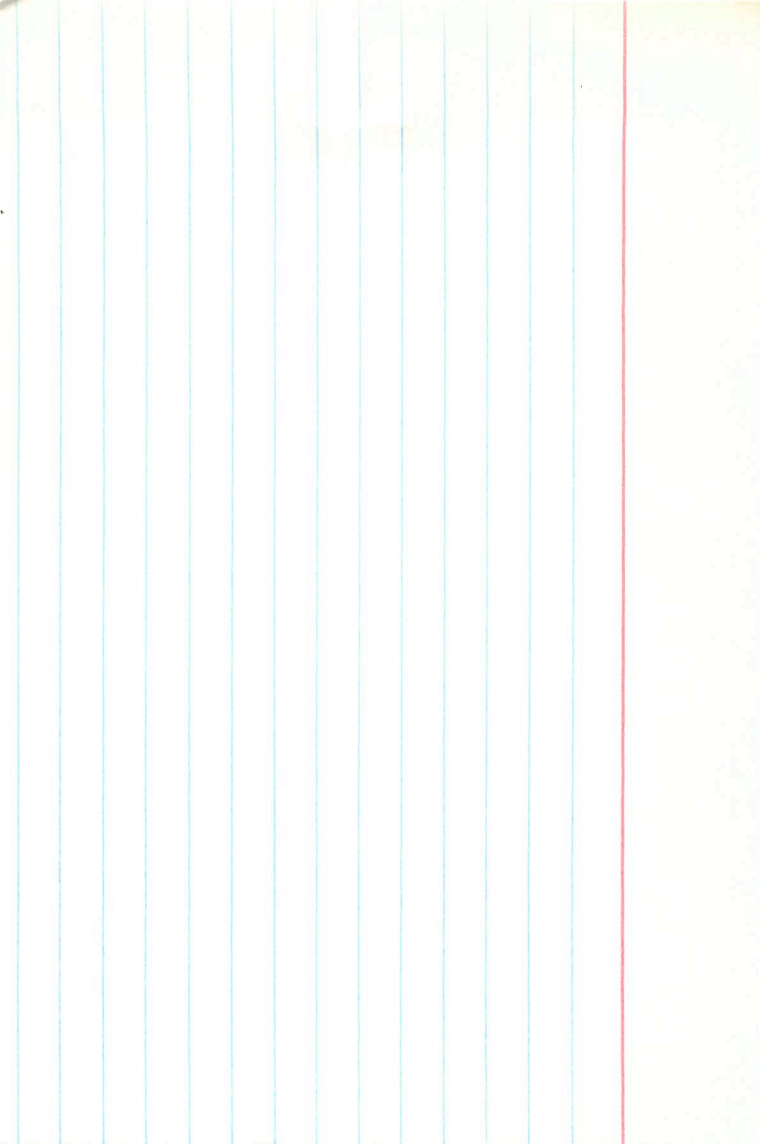
(406)    6.66 - 0.4 1.39

6.61 + 0.20 0.94 728 2.756 @ Egm

9570  
~~728~~  
~~300~~  
~~924~~

Var ked

$$M_V = -0.455$$
$$V_0 = \frac{6.5}{6.85}$$



(X)

7093 19 49.2 -52 00 B5

(408)

6.31-09 1.29

6.29-05 089 585

585 585  
177  
201

285 (2) 585

slung  
-5001-009 / F124  
-6045 / -23:  
H004

$m_v = -1.8$   
 $\frac{50.9}{10.605}$   
9.66

H037  
H002-005  
H004

7093.000\*

18.000\*

49.200\*

-52.000\*

0.000\*

0.002\*

-0.005\*

7.900\*

380.189

-23.000

0.011

-0.897

24.813

-0.017

-0.251

-0.832

-0.015

-0.363

2.604

7081  
174179

18 46.1

+31 42

83  $\overline{IV}$  p

6.05 -13 -67 +08 24

-0004 000 =15.0

-053 082 299 2.657

072 310

035

144  
454

5.8

-0051

-003-001

you

-2.25  
8.05

2073

0.65

6.04

-0.52 113 474 2737

104 494

208

692

MV -0.5