

John 5 36.2 -2 38 09.55E

1901

37468

7031

3.85 -24 -1.04 462
3.80 -24. -1.01 65

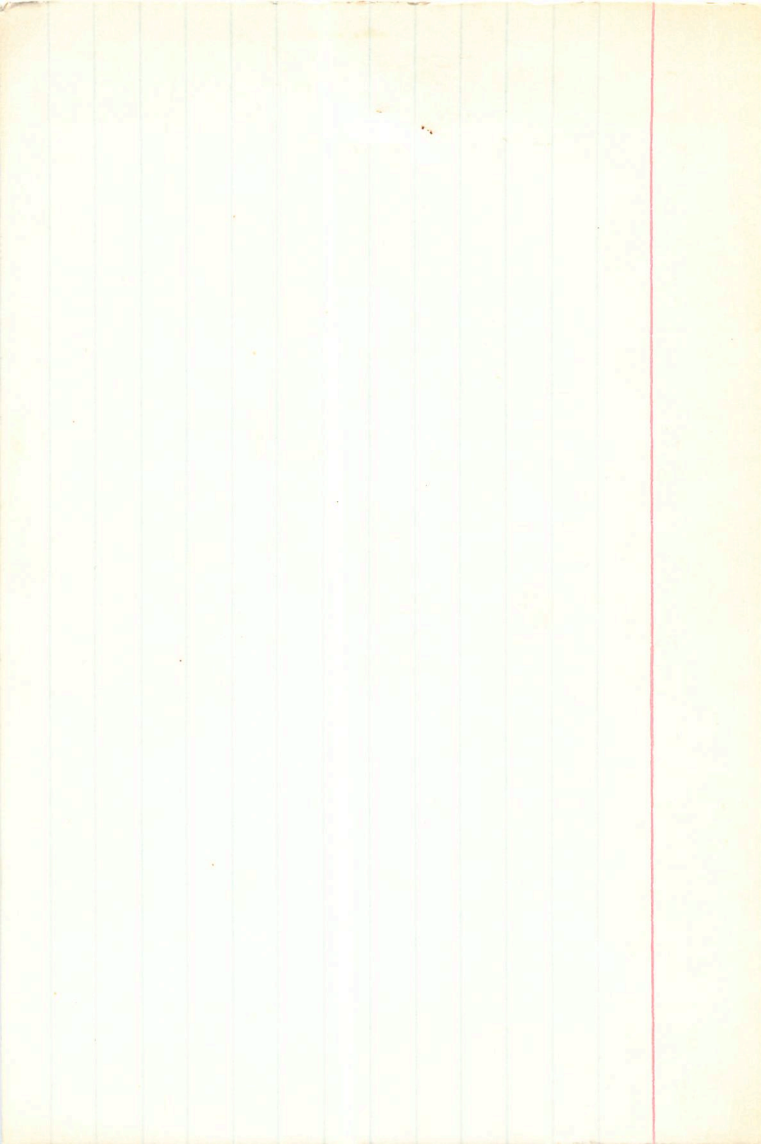
^m 5.8 0.3

-084 +038 -065 ③ 2612 ③

076
011

37
-3.7

7.1



Sp. O. orbit

B > T

12

424

36.1

5

1424

37867

Good

5.95

NO

NO

7.5ct

-504

0000



1924.000*

5.000*

36.100*

29.000*

12.000*

-0.001*

-0.004*

7.500*

316.228

25.900

-0.000

1.000

25.885

-0.013

0.017

-3.811

-0.014

-0.018

-4.948

1920 5 35.3 +7 31 05

040

3.98 -07 -37 C

586 -013 102 642 2.736 088 II:

12th Worth Unrecovered
SP. B. ~~copy~~ gain

98 645
156
841

$M_V = -0.7$
 $V_0 \frac{5.70}{6.40}$

100015 -01162 +8.56 43
-00005 -010804 +172

Unrecovered

-00007 A

000 -010

18.588 1912.6

$+0005 \pm 4.5$
 -0002

-017 ± 3.7
 -008

4780 1910.1

-019

569

$+67$

4847

$+00015 -011$

18.542

$+31$

573

564

~~18.524~~

-005

$+31$

555

48.09

1940.08

$+15$

48.24

48.36

73.58
36.8

48.34

~~1933.0~~

$+14$

48.48

∴

1920.000*

5.000*

35.300*

7.000*

31.000*

0.000*

-0.010*

6.350*

186.209 ¹⁹⁰⁵

18.500

-0.017

0.931

13.996

-0.037

-0.294

-12.409

-0.023

-0.218

-8.384

4300a

5 329 -5 27 05.5D

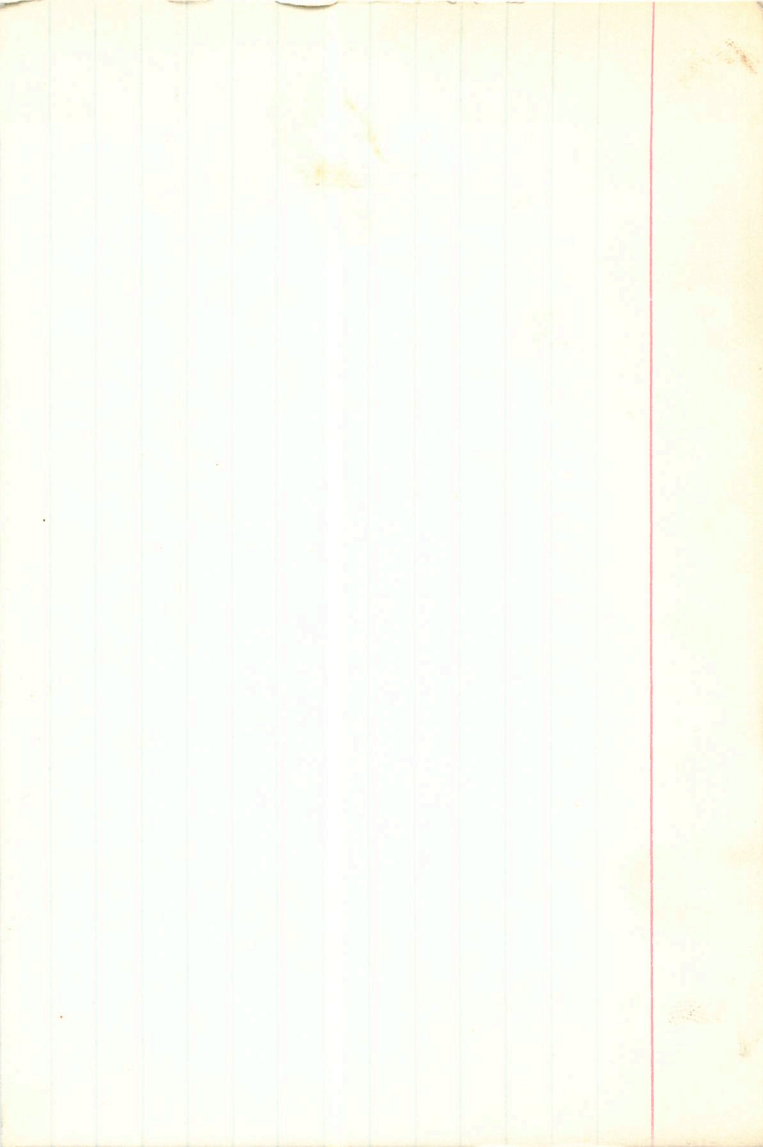
1897

508 -11 -94 95

37041

6535

-604 7059 -104 2.601 Benz



42 Dec
1892

5 331 -4 52

B2 III

4.59 -19 -94 65

8^m 2¹¹

-168 +674 +029 2.621 Dendell

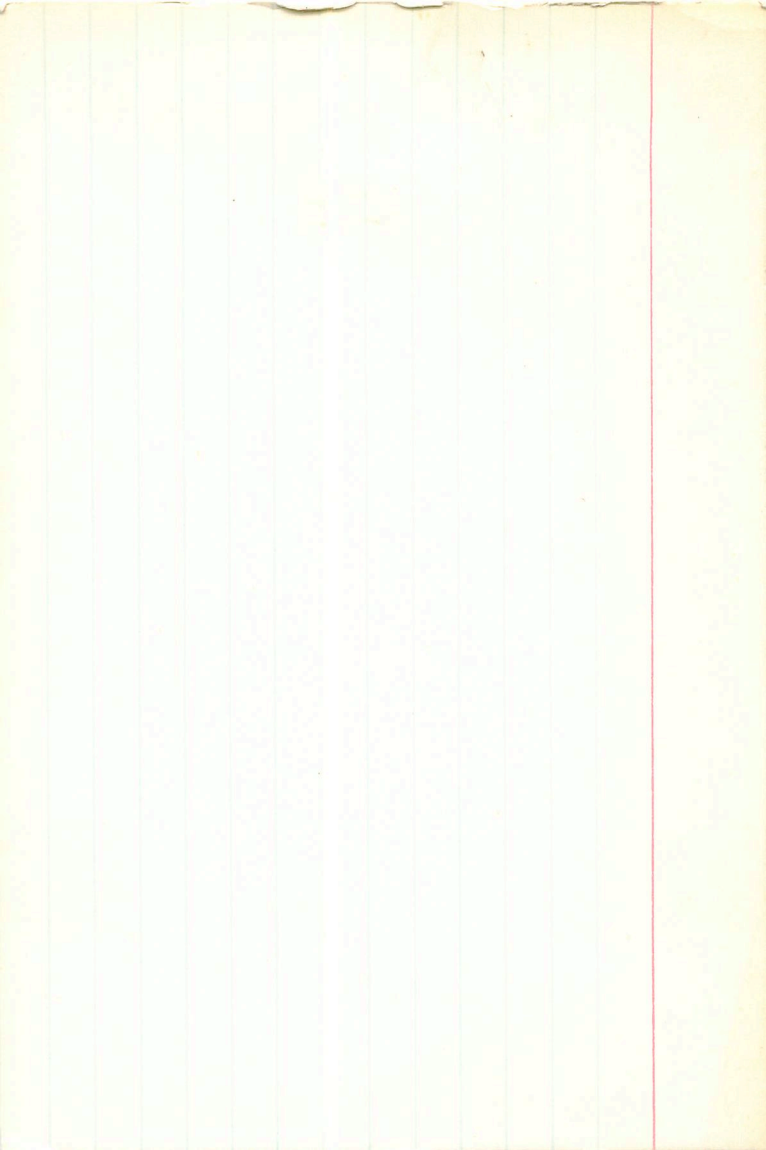
41 On
1895

5 328 -5 25 06 P

37022
6931

5-13 00 -95-45

+051 +027 -128 2.567 Bush



1887

5 326 -6 2

802

86540

9259

4.79 }
5.48 }

4.74-25 -1.0155

5.67-24 -91 55

202

150

B -110: +675: +052

2.624: Round

A -108 +045 -078

2.600 Round

2.25

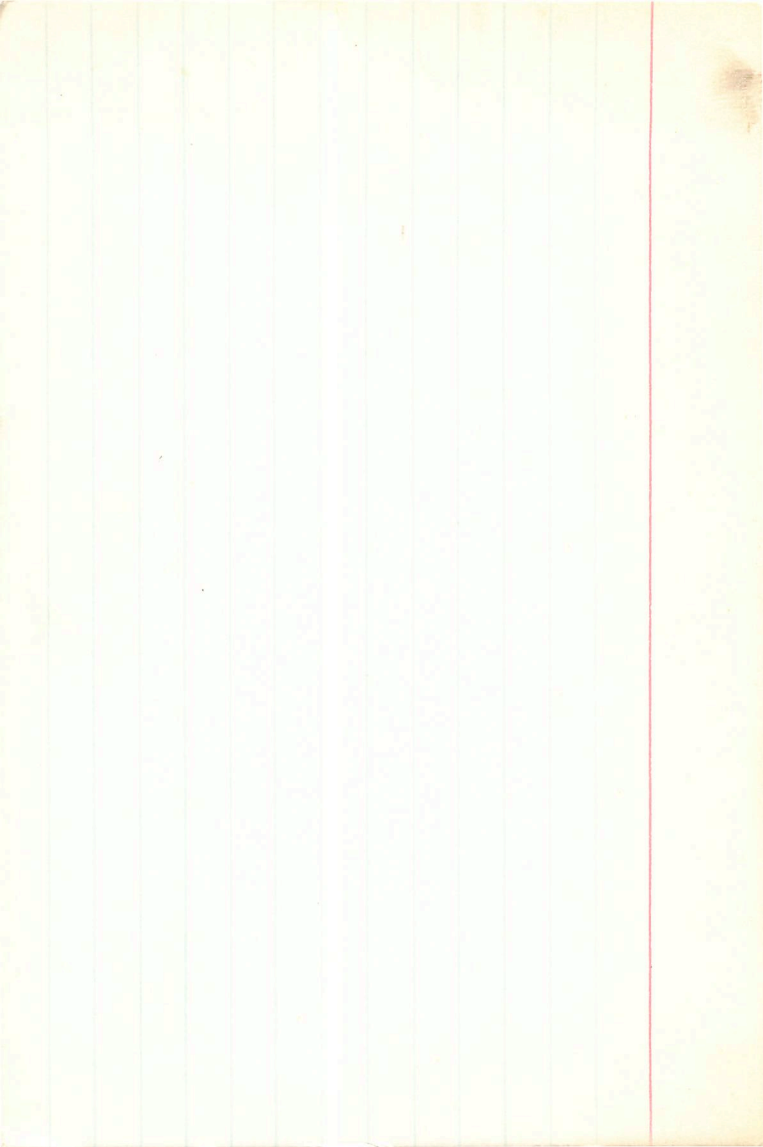
-3.45

465

830

+28.6

-10001 -005



1910 ✓
3520 ✓

✓ 344 ✓ 70
✓ 44 ✓ 06

2.29 ✓ 1804

7.62 ✓ 102 ✓

8347 1100 / 018 ✓
5504 ~ 9434 / 0004 ✓

0.1100
COST: -0.9939

R.A. :	5.550
DEC. :	21.100
PM. R.A. :	0.000
PM. DEC. :	0.000
DISTANCE :	0.000
MODULUS :	10
AD. VEL. :	0.000
q1 (U) :	0.036
q2 (U) :	0.136
q3 (U) :	0.990
dU :	0.000
U :	0.000
q1 (V) :	-0.542
q2 (V) :	0.835
q3 (V) :	-0.095
dV :	0.000
V :	0.000
q1 (W) :	0.839
q2 (W) :	0.533
q3 (W) :	-0.104
dW :	0.000
W :	0.000

200
1779

5 324 + 5 54

08

36961
6915

$\Delta m = 2^m 5^1$

37 cu

1876

5 32.1 +9 27

BO.5 ~~IV~~
BO ~~IV~~

36822

4.41 -17 -98 302

6907

+18
-9

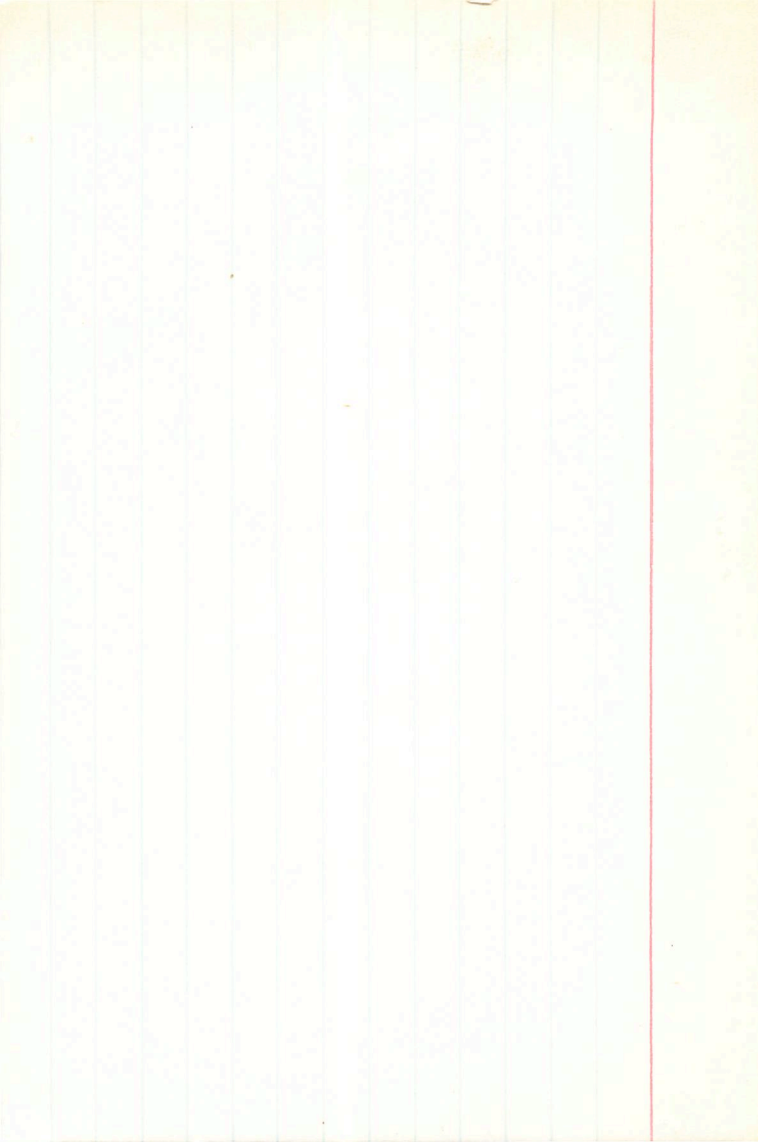
-037 +019 -055; (3) 2.602(3)

38
-017

+00003 -0033 FRY

+0006

+002-003



121 Tam

1875

5 324

+24 00

B2.5 TM

26819

+22.6

5.38 ÷ 09 - 63 ②

+016

-012 084 281 2.675

+1000

582 283

144
497

111

+0110

~~1011010~~
10110

$M_V = -1.65$

W350

+50074 - 0174
-1000

10110
-0174

10110-0174

x11

		5.500
		24.000
	1875.000*	11.000
		-18.000
	5.000*	6.650
	32.400*	214
	24.000*	22.800
	0.000*	
	0.011*	0.048
	-0.016*	0.086
205	6.650*	0.995
259	213.796	-5.095
	22.800	21.600
	-0.005	-0.547
	0.996	0.836
121	21.731	-0.046
		-97.367
	-0.092	-21.872
	-0.051	
		0.836
-25	-20.817	0.542
		-0.087
	0.003	-6.480
	-0.079	-3.367
-1	-1.187	

1871

5 31.6 +1 22

328

36741

~~688-79-88~~

~~-583 096 115 2646~~

-0.2

~~081 185~~

~~6.45~~

~~Handwritten signature~~

~~142~~

1002 000

~~2.35~~
8.8

1003

1002 000

1871.000*

5.000*

31.600*

1.000*

22.000*

-0.002*

0.000*

8.800*

575.440

-0.200

-0.000

0.886

-0.403

0.005

-0.368

3.045

-0.008

-0.283

-4.513

35km

1864

36653

5 810

+14 16

BoD

+14.1

568-14-63 (3)

-009

-049 090 321 2685

1003

081 381

$\frac{162}{493}$

1004 = 6.95

1004 = 0.10

$n_1 = -1.45$

1864.000*

5.000*

31.000*

14.000*

16.000*

-0.004*

-0.010*

6.950*

245.471

19.100

-0.013

0.966

15.310

-0.028

-0.189

-10.573

-0.040

-0.174

-13.254

1839

5 28.0 85 55

24267

6.57 8245

258.8

11.30 101

7026

9024

1618 / 0331

7114

4870 / 0012

SIN:
 COST: -0.9876

R.A. : 5.450
 DEC. : 5.850
 PM. R.A. : 0.000
 PM. DEC. : 0.000
 DISTANCE : 0.000
 MODULUS : 10
 RAD. VEL. : 0.000

q1 (U) : 0.059
 q2 (U) : 0.392
 q3 (U) : 0.918
 dU : 0.000
 U : 0.000

q1 (V) : -0.552
 q2 (V) : 0.779
 q3 (V) : -0.297
 dV : 0.000
 V : 0.000

q1 (W) : 0.832
 q2 (W) : 0.485
 q3 (W) : -0.262
 dW : 0.000
 W : 0.000

526.8 + 85.37 AD

1714

34109

66

35

6778

pt of

-50'S 161 1109 2580

0

$\frac{320}{131}$
 $\frac{1421}{1421}$

a=6

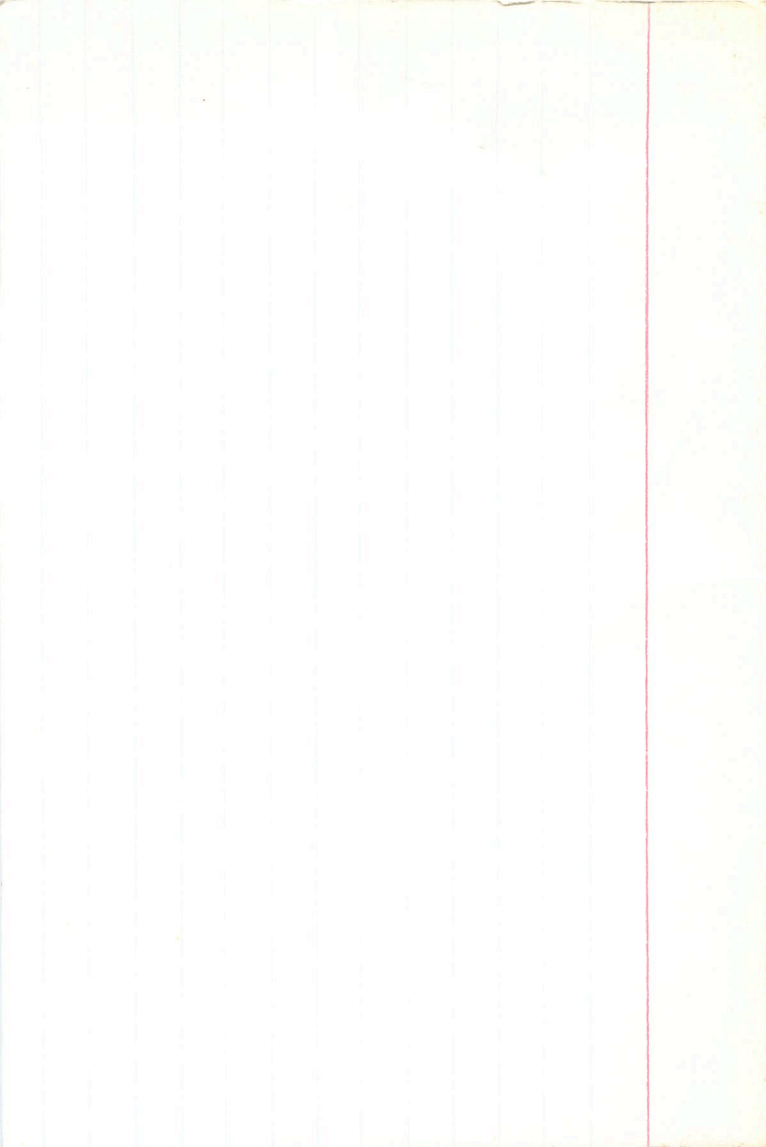
a=23

A21

1112

+03

6.3



1864 5 31.0 +14 16 334

406 18

5.63-14 -63

-049 090 321 2.645

081 331

$\frac{142}{493}$

545

-145

6.9

(+14.1)

1409

1403

1403-1409
1409-1403

1864.000*

5.000*

31.000*

14.000*

16.000*

-0.004*

-0.010*

6.900*

239.883

19.100

1232
-45
-42

-0.013

0.966

15.381

-0.028

-0.189

-10.415

-0.040

-0.174

-13.028

1841

27.9 -7 29

36285

6.34 -21 -83

+11.0

2646

-0005 +002

-055 096 125
079 144

Not
in

6.2

158
40

10076
10011
-1001

-245
965

3215-11

1340.000*

5.000*

27.900*

-7.000*

-29.000*

-0.005*

0.001*

8.650*

537.032

11.000

0.001

0.803

9.638

0.016

-0.471

3.584

-0.018

-0.365

-13.555

+407

-239

185

1804 5 239 +30 10 5.74 8916

193020 296241 416.7

124
12
124
124

het 54
-00021-0007 W₂ 50

-00013-0053

54
130.2
-3
-6
80.5
416.7

-0017
-0002.5-0016

5.400
30.200
-3.000
-6.000
8.050
407
16.700

0.070
-0.021
0.997
-0.268
16.546

-0.557
0.828
0.057
-16.716
-5.862

0.827
0.560
-0.047
-26.084
-11.405

113 Tam

1798

35532

5 23.2 +14 39

32.6

6.24 -08 -64

~~31.5~~

-02 084249 2643

004 -011

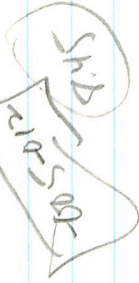
084 249

148

$\frac{148}{419}$

0057

$n_v = -2.6$



1554
Bess

1798.000*

5.000*
23.200*
16.000*
39.000*
-0.005*
-0.012*
8.450*
489.779
31.500

-0.014
0.974

23.892

-0.033
-0.137

-20.630

-0.050
-0.179

-30.111

+340 1040

1795

5

23.4

+34

21

CA?

✓

Σ

145 073 187 272

45 116 128

232

520

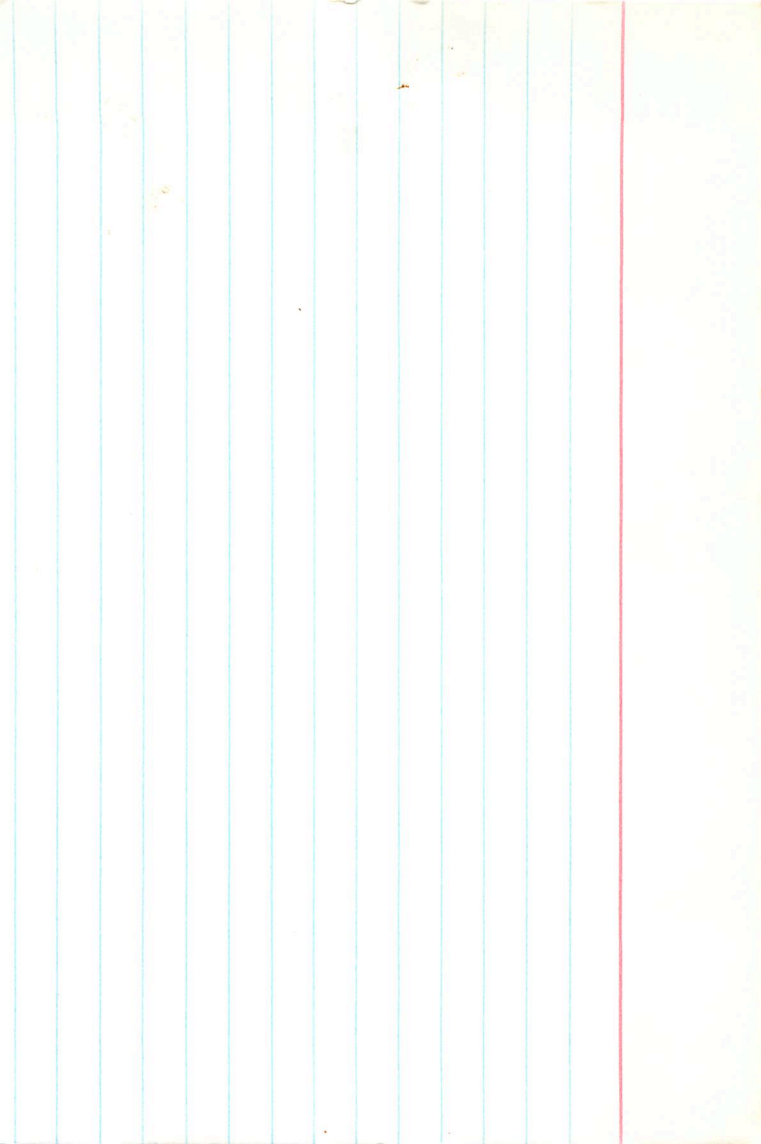
188

4098 0127

9122 10043

5510

1372



2 du

1790

35448

6668

5

22.5

+6

18

B2 III

~~1.44 -22 -87~~
~~1.44 -22 -88~~

1.64 -21 -86 2 02

2.673
2.614
2.59

-0.91 +0.60 +1.29 ③ 2.614 ②

100
248

FNY

-00074 -0136

+18.2

-00120

E = +0.3
V0 = 1.555 5.05

MV = -3.3

-0110114

B-V0 -25

2-B0 -90

MV -3.5

1790.000*

5.000*

22.500*

6.000*

18.000*

-0.011*

-0.014*

5.050*

102.329

18.200

-0.030

0.920

485
93.4
+14

13.721

-0.023

-0.280

-7

-7.411

-0.076

-0.275

-12

-12.753

1764 5 19.0 -000 28 832

35007

5.67-14-66 +06 18

1000000

-040 092 248 2.691

085 306 5.5

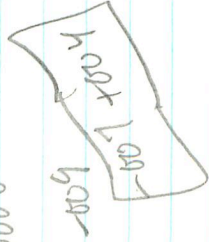
+7.2

+005

-1.2

6.7

-0006



1764.0000*

5.0000*

19.0000*

0.0000*

-28.0000*

-0.0070*

0.0040*

6.7000*

218.7762

7.2000

0.0063

0.8668

7.6271

0.0328

-0.3615

4.5748

-0.0185

-0.3435

-6.5299