

-2403557
50264

750

9.05 + 0.65 + 0.06 8.84 + 0.22

6 49.2 - 29 82

1040 + 052

+ 1 + 5

1044 + 057

86
932

5

1048 + 058

50264.000*

6.000*

49.200*

-29.000*

-32.000*

0.048*

0.098*

5.000*

38

100.000

80.000

94

0.330

0.491

72.315

264

0.088

-0.841

-58.451

1764

0.388

-0.226

20.723

2534 SW 6 48.3 -7 55

44476

6.31 +01 +02 6

-003

202 941

2.884 W

~~12.7~~
~~12.2~~
12.1

-10

245 954
40.7

2.780 2 Ca
0.15

W

1395

a = 1002

r = 0.24

~~Banking~~

#S.S

6.7

-0045

-0065

S.2

1.500

-00109

-0148

5.000

-0.0

+0.01

1.124

1.500

-00109

13.92

13.91

-006 205 975 2.882

976 2.882

416 30

9

2534.000*

6.000*

48.300*

-7.000*

-59.000*

-0.012*

-0.005*

0.15 5.200*

109.648

21.800

-0.000

0.764

16.658

0.006

-0.642

-13.289

-0.061

-0.067

-8.172

436m

B > III

2511

483

+68 57

B > III

49370

Var. ind

5.11 -13 -44

-21.0

-036 084 597 2.683

+1015 +010

078 604

10800
11000
5000
15000

156
960

$m_v = -1.8$

6.85

2511.000*

6.000*

48.300*

68.000*

57.000*

0.005*

0.011*

6.850*

234.423

-21.000

-0.038

0.753

-24.639

0.031

0.500

-3.179

0.030

0.429

-2.015

2522 4 46.7 -15 05 864

5.88 -10

174

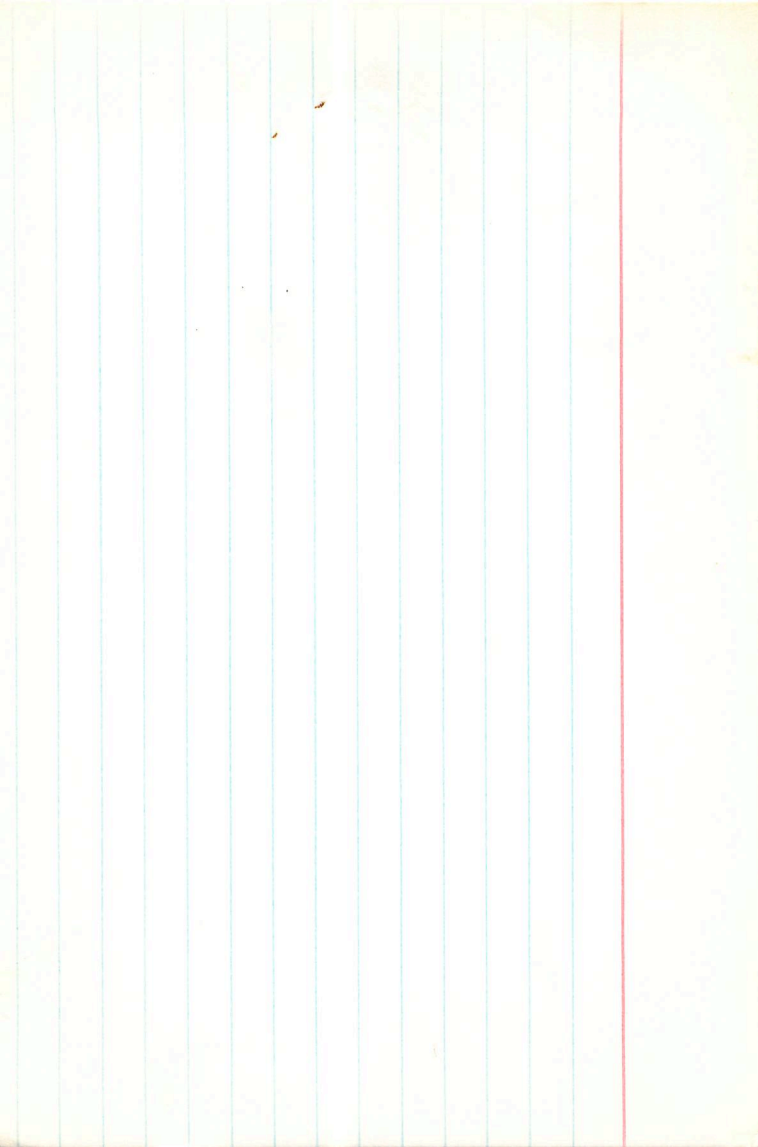
-0.85 118 458 2.763

102 766

204
670

Varied

$M_V = +0.25$
 $V_0 \frac{5.2}{4.95}$



$$\Delta m = 0.1''$$

2521 6 46.7 -2 13 R5V

5.74-10 -47

E₁₀₆

-043 111 501 2716

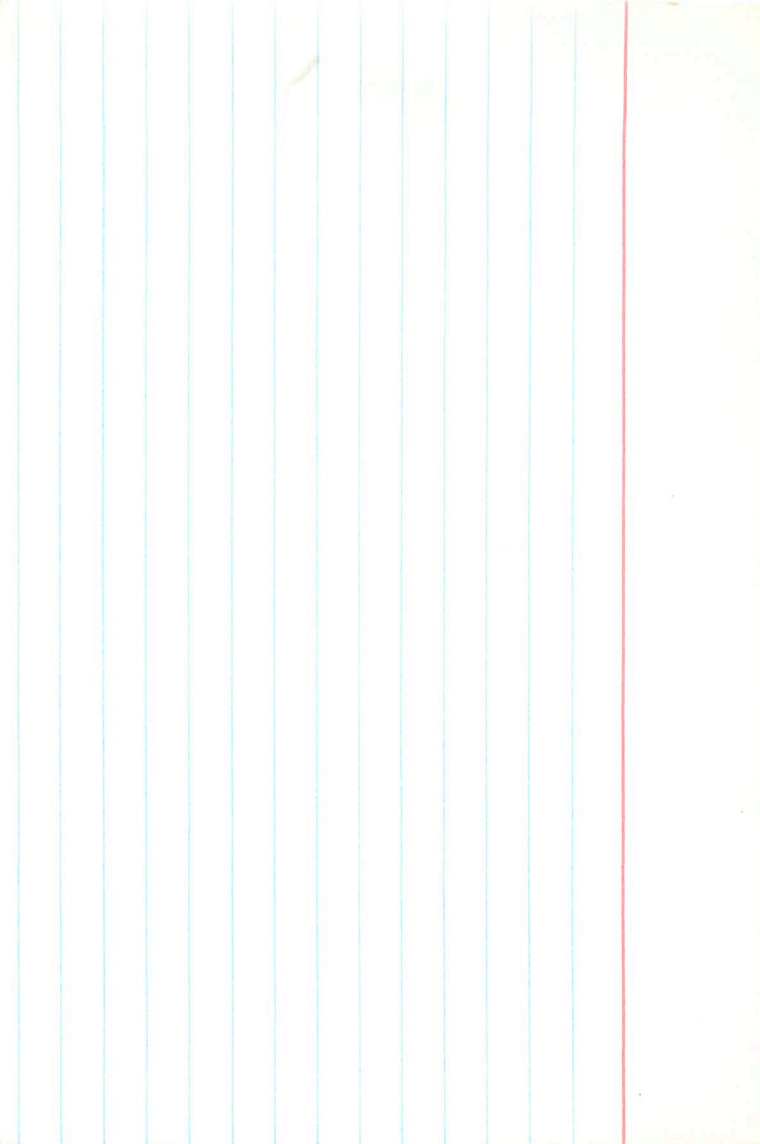
98 510

196
706

~~Vanby~~

$$\mu_V = -1.05$$
$$\frac{5.55}{6.675}$$

(7.35)



33 km

2519

G 470

+16 16

B7 VII
B8 VII

49606

5.87

(0.10)

^{0.03}
-058 116 489 2.703

^{0.081}
-001107
-00110

106 501
212
913

$m_v = -1.35$

+11.1
+12.8

-019-011

(7.10)

2519.000*

6.000*

47.000*

16.000*

16.000*

-0.019*

-0.011*

7.100*72

263.027 278.4

12.800

0.010

0.943

14.693 +15

-0.010

-0.311

-6.608 -6

-0.103

0.121

-25.564 -27

2517 6 46.5 +1 03 B0 II -II

45567

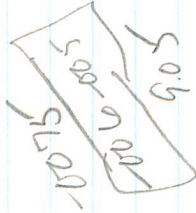
6.15 -14 -69

423.2

-048 073 319 2.674

1005 1004

064 324
128
457



$m_v = -320$



2517.000*

6.000*

46.500*

1.000*

3.000*

-0.006*

-0.005*

9.050*

645.654

23.200

-0.004

0.850

16.994

-0.007

-0.527

-16.566

-0.036

-0.001

-23.374

2510 6 44.5 -37 43 B37

49336

(e)

-028 070 372

2509

6 44-9 ~20 57

46723

(35507)

1517 6.24

2007 20

2507 6 44.4 -39 29 88

Day

Month

~~5-25~~ 129

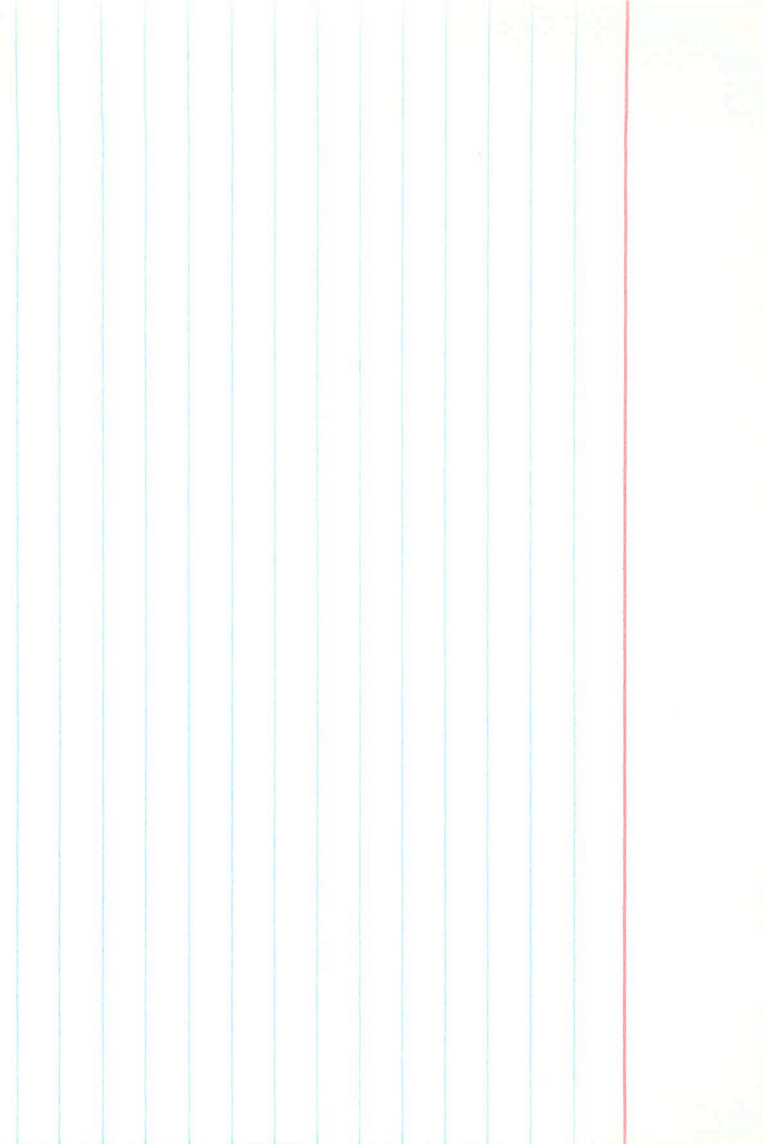
6.1.1 -49 94 496 265 1 329

79 506

$\frac{158}{697}$

65

28



188 ~~27~~

6 44.6 -14 22

2504

5.25 -0.03 -0.26 (1)

45224

Slack

5.28 1030 +089 101 +884 2.713 (2)

8875

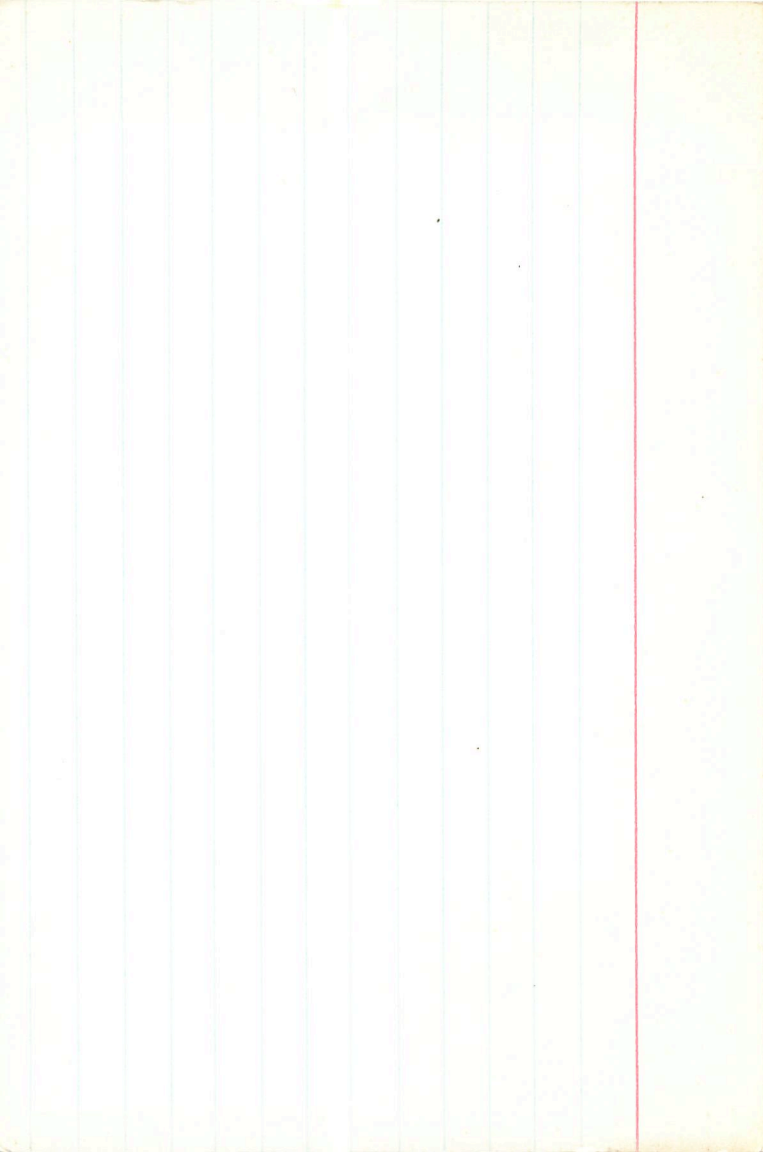
978
2022
180

2485
2112
172

Ad. + 17 hours

1/2 shift

104 -1.45



2497

6

437

-30

32

18874

49028

6.52-10 1.00

-052 119 443 2.716

+18.0

110 493

220

713

(-606 + 1002) / 745

$$M_V = -1.0$$

2497.000*

6.000*

43.100*

-30.000*

-32.000*

-0.006*

0.002*

7.450*

309.030

18.000

0.015

0.482

13.167

0.015

-0.839

-10.499

-0.022

-0.253

-11.236

106ma

2492

6 42.6 -31 01

B3

B2 ~~4e~~

48917

8827

¹²⁸

-070 +064 +171 ③

2.572 ③

5.40 -14 -84 C ²⁵⁹

+002 +001

+340

W.D.

+13

~~+15 +18~~

~~-29 -30~~

~~-29 -25~~

1060

2492.000*

6.000*

42.600*

-31.000*

-1.000*

0.002*

0.001*

8.000*

398.107

34.000

0.002

0.475

16.907

-0.002

-0.841

-29.423

0.010

-0.258

-4.716

42 km

2490

6

458

467 38

$\frac{B4}{B2}$

4889

507

513 - 17 - 64

10012 - 806

-069 093 350 2668

10068

081 364
 $\frac{162}{326}$

1804 - 005 $m_v = -2.1$

715

2490.000*

6.000*

45.800*

67.000*

38.000*

0.004*

-0.005*

7.150*

269.153

5.300

0.010

0.768

6.643

-0.026

0.483

-4.434

0.012

0.421

5.571

7.05
255

2479 6 41.0 +8 59 80 III

48434

51343

5.86 -02 -89

2572

069 002 -071

014 -085

028
-050

16.5
-003 +003
-003 +003

2479.000*

6.0000*

41.0000*

3.0000*

59.0000*

-0.0000*

0.0000*

10.5000*

1258.925

34.5000

0.0009

0.078

41.049

0.017

-0.478

4.718

-0.006

0.001

-7.590

$\overline{R^2}$
 $\overline{B^2}$

6 39.6 -40 18

2778

6.11-14 1.28

48393

-633 102 397 267

+17.0

89 402
178
 $\frac{178}{3}$

801 100 + 80
80

$M_V = -1.95$

2475.000*

6.000*

39.600*

-40.000*

-18.000*

-0.001*

0.004*

8.000*

398.107

17.000

0.018

0.334

13.014

0.006

-0.885

-12.561

0.002

-0.325

-4.735

2451 6 36.2 =43 8 88 II

47670

07 -11 -40 C

8675

3.17 -0.11 -0.41 35

W

24 763

2.803

4032 +073 +769 6

2.680 ③

ENG2

176

163

ENG2-ENG17

915

E+4

43
-6070

12928

V0 = 305 (512)

B-V0-15

19

-003-005

u-Q0

111 V-215

2451.000*

6.000*

36.200*

-43.000*

-8.000*

-0.003*

-0.005*

5.200*

109.648 102.3

28.200

-0.019

0.291

+6

6.085

0.001

-0.890

-25

-24.939

-0.020

-0.351

-12

-12.060