

183316 19 28.9 48 03 60 IV 710

179 IV mic

183326

+0040 0 0  
- 2 - 5

+0016 + 3

+0049 - 2

15.5

-68.05

+65.5

+0027.5

+0045 - 3.5

-3.5

46.5

710

19.500  
-68.050  
65.500  
-3.500  
4.650  
85  
10.000  
  
0.396  
-0.543  
-0.740  
54.957  
-2.725  
  
0.283  
0.839  
-0.465  
18.909  
-3.037  
  
-0.874  
0.025  
-0.486  
-101.812  
-13.525

198571 19 28.1 -24 12 FSD 443

198571-240

W

+20 -47

19.5

-6 +1

242

+3 +3.5

+17 -42.5

+18.5

+17 -44

-44

5.4

443

19.500  
-24.200  
18.500  
-44.000  
5.400  
120  
14.300

0.396  
0.121  
-0.910  
6.423  
-12.245

0.283  
0.927  
0.246  
-170.709  
-17.002

-0.874  
0.355  
-0.333  
~~-148~~ 916  
-22.061



189025

16.4.77

19 298 706 34

42m  
-236

4004 2015 camp

4309 504  
-9024 -2627

184025

hch 094

~~Sammy~~

80004 010

1000 015

19 29.5 406 34 FATI -20

50 129

+9 +6 ABK2

+24 -1

-8 +2

+2 +3

19.5

+6.6

+16.5

73.5

59.1

-23

+21 +4

+15 +5

+17.5 +3.5

19.500  
6.600  
16.500  
3.500  
5.950  
155  
-23.000

0.396  
0.570  
-0.720  
40.214  
22.787

0.283  
0.670  
0.686  
33.096  
-10.657

-0.874  
0.475  
-0.104  
-59.990  
-6.899

184553

19 32.9 -26 01 F4E +19.4

-26 01 4387

F3 III

5.25

+19.4

/

19.500  
-26.000  
0.000  
0.000  
5.750  
141  
19.400

0.396  
0.092  
-0.914  
0.000  
-17.725

0.283  
0.934  
0.217  
0.000  
4.210

-0.874  
0.344  
-0.344  
0.000  
-6.668

186497

19 42.3

-8

45

-8

642

805095

104

+23 -1

-8 +9

+2 +1

720 +9

729

19.7

-8.75

+21

+7

6.25

-3

19.700

-8.750

21.000

7.000

6.250

178

-3.000

0.436

0.362

-0.824

54.940

12.241

0.251

0.830

0.498

52.220

7.792

-0.864

0.424

-0.271

-70.955

-11.804

196752 19 44.2 -20 07) -15.24

P55

2005705  
-48-23  
+2 +6

33-23 11964 14.80 3360

+ 4 -0037 -018  
+16

468 -0034 -026  
14.34

00355 -022  
+8 +1.5  
-0037 -020.5

P20 11.347  
-8  
389  
14.86  
-20  
15.06

049-020.5  
-049-022.5

19.75  
-20  
-52  
-22.5

11.351  
68.27

14.94

39.5

-2  
849

-24  
15.21

-15.2



575  
ms

19.750					
- 20.000					
- 52.000					
- 22.500					
3.950					
- 15.200					
0.446					
0.197					
- 0.073					
- 124.310					
5.600					
0.243					
0.312					
0.330					
- 153.525					
- 14.477					
- 0.061					
- 0.359					
- 0.359					
161.230					
15.402					

18697

19 44.9

48 45

5114

-24

789437

48 -9

-6 41

+3 +3.5

48 -2.5

411-94

+5 -2.5

48 -2

48 -4

5114

5114

5114

-4

4.9

121

19.750  
18.750  
11.500  
-4.000  
6.400  
191  
-21.000

0.446  
0.700  
-0.558  
9.755  
13.571

0.243  
0.505  
0.828  
2.951  
-16.829

-0.861  
0.505  
-0.055  
54.037  
-9.132

188315

19 53.3

54 23 FOII

78.0

549535

FOII mid

+0019 +26

+2 -2

+6 +4.5

-----

+0027 +002.5

19.9

-54.4

+37

+0.5

6.9

78.0

+0236

+021.5 +00.5

19.900  
-54.400  
37.000  
0.500  
6.900  
240  
-18.000

0.475  
-0.316  
-0.821  
47.777  
26.240

0.218  
0.946  
-0.238  
24.513  
10.167

-0.852  
0.066  
-0.519  
-86.862  
-11.498

189406

7<sup>th</sup>

-509723

19 58.6

-50 02 F8V

+349

-6034 -081 C

G0V

+2 -2

+5 +4.5

-0027 -078.5

79.5

-53

-0244

-43

-80.5

-026.5 = -080.5

485

+34.9

19.950

-53.000

-43.000

-80.500

4.850

93

34.900

0.485

-0.291

-0.825

51.559

-23.972

0.210

0.954

-0.213

-389.829

-43.825

-0.849

0.070

-0.524

77.564

-11.040

179513

19 582 -21 86 P0E -44

-205555

+73  
10  
+5

12.519  
115  
5.57

+0023 +010  
+0023 +025

8.72 8360  
+1.5  
9.57

105 +034.5

+0073 +035  
+0076 +036.5

→

20.0  
→ 1.6

970 12816  
115  
410

7094

6.78  
114  
6.97

12.781  
→

6921

7.24  
8E  
→

5.38

796

7.56

→ 44



20.000  
-21.600  
113.000  
34.500  
5.350  
117  
-44.000

0.494  
0.184  
-0.850  
276.248  
69.839

0.202  
0.927  
0.318  
251.893  
15.621

-0.846  
0.328  
-0.421  
-367.413  
-24.641

189581

19 579 +14 46 255 +12

50665

52140412

-11 -9 4 -35 -2 4814

-6 41 14 +35

-135 -41  
~~+35~~

2400  
9 - 342

8-22-8  
8-22-8  
8-22-8

8

529

214

20.000  
14.750  
~~-22.500~~  
-8.000  
6.250  
178  
12.000

0.494  
0.652  
-0.575  
-75.695  
-20.366

0.202  
0.558  
0.805  
-41.947  
2.200

-0.846  
0.514  
-0.145  
67.718  
10.307

19155

+180440

20 09.2 +18 20 F7 IV -23

+23 -81

-7 +5

+4 +3.5

+10 -63 Ag-ry

+20 -72

+15 -67.5

+18 -64.5

20.15

+1823

+19

69.5

4.7

-23

20.150  
18.330  
19.000  
-69.500  
4.700  
87  
-23.000

0.522  
0.680  
-0.515  
-179.320  
-3.781

0.176  
0.504  
0.845  
-151.065  
-32.599

-0.834  
0.532  
-0.144  
-246.692  
-18.185

193462 20 184 -34 35 FSI-19

-34014309

FSI

-0005 +004 70  
2 x 2 -0035 +004

+ / 0003 +006 -004 +004

2003

-346

-5

44

475

-19

20.300  
-34.000  
-5.000  
4.000  
4.750  
89  
-1.900

0.550  
0.011  
-0.835  
-10.510  
0.651

0.151  
0.982  
0.112  
15.675  
1.183

-0.822  
0.188  
-0.538  
19.593  
2.769

1962M

20 33.5 +06 54 FYTU -6

400489

$$\begin{array}{r} -4 -7 \\ 8 +5 \\ +3 +3 \\ \hline \end{array}$$

$$\begin{array}{r} -13 -14 ABOL \\ -9 +1 \\ \hline -11 -6.5 \end{array}$$

$$\begin{array}{r} -9 -8 \\ \hline \end{array}$$

$$\begin{array}{r} 20.55 \\ +0.9 \\ \hline \end{array}$$

$$\begin{array}{r} -9 \\ \hline \end{array}$$

$$\begin{array}{r} -9 \\ \hline \end{array}$$

$$\begin{array}{r} 1.5 \\ \hline \end{array}$$

$$\begin{array}{r} -6 \\ \hline \end{array}$$



~~20.550~~

~~6.900~~

-9.000

-9.000

5.700

138

-6.000

0.593

0.557

-0.581

-48.890

-3.262

0.108

0.660

0.743

-32.738

-8.979

-0.798

0.504

-0.331

12.310

3.686

146323 20 347 -21 31 F5B +19.2

-2105776

~~51 +4~~

~~-10 +8~~

~~+1 +1.5~~

~~-60 +117.5~~

~~-59.5 +15~~

206

-21.5

-64

+15

4.5

+19.2

20.600  
-21.500  
-64.000  
15.000  
4.500  
79  
19.200

0.601  
0.217  
-0.769  
-154.308  
-27.023

0.100  
0.935  
0.341  
38.369  
9.600

-0.793  
0.282  
-0.540  
243.800  
8.989

197315

20 40.2 to 249 P40 -24

+20423)

-19 -30 +8 -23

-10 +6 -24 -22

+3 +2  

---

-9 -22.5

-7 -25

2046  
~~224~~

-

~~se~~

55.4

se

20.660  
2.800  
-7.000  
~~25.000~~  
4.550  
81  
-21.000

0.611  
0.514  
-0.602  
-81.114  
6.053

0.089  
0.711  
0.697  
-87.253  
-21.732

-0.786  
0.480  
-0.389  
-30.791  
5.667

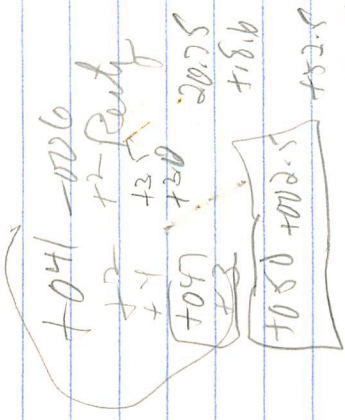
F0111

20 444 +18 35 -24

197476

+1980814

+26 -26 0  
 +26 -26  
 -7 +7



0500

402

0116

467

0.32

-24

20.750  
18.600  
~~52.500~~  
2.500  
6.150  
170  
-24.000

0.626  
0.653  
-0.426  
155.344  
36.601

0.074  
0.494  
0.866  
23.196  
-16.852

-0.777  
0.573  
-0.261  
-176.345  
-23.680





20.750  
-12.600  
3.500  
61.000  
3.100  
42  
-16.000

38.5

0.626  
0.338  
-0.703  
107.974  
15.745

0.074  
0.871  
0.485  
253.143  
2.792

-0.777  
0.355  
-0.520  
90.138  
12.085

-82.6 w(3)  
-90.2 (2)  
-85.2

20 46.4 -20 49

GC 29020 8.14 10.605 +1.58 Egg (3) Mc Lenn

65E PAM

Not 61 copy  
10159 -184 GC +

~~+223 -185~~ 2.3  
-86.5

+236 ± 7 -186 ± 8 GC  
+190 ± 10 -203 ± 7 Y

+217 ± 8  
+222  
-195 ± 5  
-195

34 (12)  
460 (14)  
145 (7)  
10 ± 7

19818E

GC 29020

W18057

Y4968

-2105840

+107 -118 -54 .010

+87 -67 -6 .020

+79 -55 +14 .030

+25 -50 +16 .040

+219 -189.5

20.7  
+20.8  
+23.4  
-189.5  
3.6  
-8.5

+066856.7  
-18628.0

+0150  
-182

+0144  
-19

+0154  
-189

21.921 1306.2  
10155 -20 48 51.47 1305.6

-736  
185 8.26

22.153  
20.41 43.21

55.64  
P20 1329.22

55.84  
30.28

55.04  
49.17

55.37  
41.93

55.17  
47.43

55.17  
47.43

26.418  
18.68

21.89  
20.28

21.89  
46.17

21.89  
21.15

1929.22

19.40

30.28

49.17

41.93

47.43

47.43

18.68

20.28

46.17

21.15

21.15

21.15

21.15

21.15

21.15

21.15

+0150

+0144

+0154

+0155

+0155

+0155

+0155

+0155

+0155

+0155

+0155

+0155

+0155

+0155

+0155

+0155

+0155

+0150

+0144

+0154

+0155

+0155

+0155

+0155

+0155

+0155

+0155

+0155

+0155

+0155

+0155

+0155

+0155

+0155

+0150

+0144

+0154

+0155

+0155

+0155

+0155

+0155

+0155

+0155

+0155

+0155

+0155

+0155

+0155

+0155

+0155

+0150

+0144

+0154

+0155

+0155

+0155

+0155

+0155

+0155

+0155

+0155

+0155

+0155

+0155

+0155

+0155

+0155

+0150

+0144

+0154

+0155

+0155

+0155

+0155

+0155

+0155

+0155

+0155

+0155

+0155

+0155

+0155

+0155

+0155

+0150

+0144

+0154

+0155

+0155

+0155

+0155

+0155

+0155

+0155

+0155

+0155

+0155

+0155

+0155

+0155

+0155

+0150

+0144

+0154

+0155

+0155

+0155

+0155

+0155

+0155

+0155

+0155

+0155

+0155

+0155

+0155

+0155

+0155

+0150

+0144

+0154

+0155

+0155

+0155

+0155

+0155

+0155

+0155

+0155

+0155

+0155

+0155

+0155

+0155

+0155

+0150

+0144

+0154

+0155

+0155

+0155

+0155

+0155

+0155

+0155

+0155

+0155

+0155

+0155

+0155

+0155

+0155

+0150

+0144

+0154

+0155

+0155

+0155

+0155

+0155

+0155

+0155

+0155

+0155

+0155

+0155

+0155

+0155

+0155

+0150

+0144

+0154

+0155

+0155

+0155

+0155

+0155

+0155

+0155

+0155

+0155

+0155

+0155

+0155

+0155

+0155

+0150

+0144

+0154

+0155

+0155

+0155

+0155

+0155

+0155

+0155

+0155

+0155

+0155

+0155

+0155

+0155

+0155

+0150

+0144

+0154

+0155

+0155

+0155

+0155

+0155

+0155

+0155

+0155

+0155

+0155

+0155

+0155

+0155

+0155

+0150

+0144

+0154

+0155

+0155

+0155

+0155

+0155

+0155

+0155

+0155

+0155

+0155

+0155

+0155

+0155

+0155

+0150

+0144

+0154

+0155

+0155

+0155

+0155

+0155

+0155

+0155

+0155

+0155

+0155

+0155

+0155

+0155

+0155

+0150

+0144

+0154

+0155

+0155

+0155

+0155

+0155

+0155

+0155

+0155

+0155

+0155

+0155

+0155

+0155

+0155

+0150

+0144

+0154

+0155

+0155

+0155

+0155

+0155

+0155

+0155

+0155

+0155

+0155

+0155

+0155

&lt;

198188.000\*

20.000\*  
46.400\*  
-20.000\*  
-49.000\*  
0.223\*  
-0.185\*  
2.300\*  
28.840  
-86.500  
  
0.459  
-0.740

235  
2 98  
+78 77.264  
  
-0.744  
0.356

-53 -52.240  
  
-1.060  
-0.570

+18 18.771

20.750  
~~-20.800~~  
234.000  
-189.500  
3.600  
52  
-85.000  
  
0.626  
0.235  
-0.744  
438.078  
86.216

0.074  
0.932  
0.356  
-760.612  
-70.162

-0.777  
0.277  
-0.566  
-1054.270  
-7.237

14437814

20 54.1

+14

37.

10U+AR

+14.448

198505

20 488

38 21 F5V-73

69441158

F3D

1007-061

1020

1015-064

20.8

-38.23

+2.5

-64

5.05

-73

20.800

-38.330

25.000

-64.000

5.050

102

-7.300

0.634

0.005

-0.774

57.438

11.524

0.065

0.996

0.059

-296.159

-30.739

-0.771

0.088

-0.631

-98.282

-5.451

148749

20 50.3 -28 13 FEB 19

28 16464

+89 -4

F8/30

-8 +6

+4 +2.5

0 -3

+85 +002.5

208

-28.2

+96.5

+2.5

7.7  
-19



-0.606  
-352.128  
-19.160

20.800  
~~-28.200~~  
96.500  
2.500  
4.700  
87  
-19.000

~~20.800~~  
~~-28.200~~  
96.500  
-30.000  
4.700  
87  
-19.000

0.634  
0.141  
-0.761  
257.154  
36.848

0.634  
0.141  
-0.761  
235.458  
34.959

0.065  
0.970  
0.234  
37.632  
-1.162

0.065  
0.970  
0.234  
-111.821  
-14.179

-0.771  
0.197  
-0.606  
-308.385  
-15.350

-0.771  
0.197  
-0.606  
-338.794  
-17.999

198861 20 50.6 +10.4F F7TD -33.6

+1005401

+21 -61 +6 -59

-6 +2 +18 -56

+3 +3 +12 -57.5

+14 -60.5

20.8

+10.8

+14

-60.5

5.45

-33.6

20.800  
10.800  
14.000  
-60.500  
5.450  
123  
-33.600

0.634  
0.588  
-0.502  
-127.340  
1.216

0.065  
0.607  
0.792  
-169.818  
-47.507

-0.771  
0.535  
-0.347  
-203.551  
-13.400

R2Y

200580 21 01.6 +02 Y5 dF6 -6.48

Cc29422 -9.34(3)

w13240 7.32 +0.54 -0.03(4)ER -42(3)

S=10

Y15063  
+204245  
W04914  
7.33 +53 -4  
3 W(3.7)

-284 -376 T.F.

-88 -70 +10 .020 ✓ 198 -371  
-109 -93 +12 .015 193 -319.5

10 10 10  
-294 -372  
-288.7 -390.7 Y  
-290 -380

298  
-296 -372.5

210  
+24  
296.5  
372.5  
2.6

-6.4

4M(8)  
0Y(10)  
4±7

-0196495  
-0194  
= 37247.3  
-3710

36.890 1908.1 + 248 0.441 1904.7

$$\begin{array}{r} 821 \\ \hline 37, 711 \end{array}$$

$$\begin{array}{r} 1685 \\ \hline 17, 29 \end{array}$$

37,

$$\begin{array}{r} 17, 29 \\ \hline \end{array}$$

$$\begin{array}{r} 37.141 \\ \hline 15 \\ 196 \end{array}$$

$$\begin{array}{r} 5.42 \\ +7 \\ \hline 19366 \end{array}$$

$$\begin{array}{r} 196 \\ \hline \end{array}$$

518

$$\begin{array}{r} 5.44 \\ \hline \end{array}$$

$$\begin{array}{r} 127 \\ \hline \end{array}$$

233

$$\begin{array}{r} 148 \\ \hline 1926.1 \end{array}$$

$$\begin{array}{r} 31.4 \\ \hline \end{array}$$

$$\begin{array}{r} 21.70 \\ \hline 5 \end{array}$$

$$\begin{array}{r} 37.259 \\ \hline \end{array}$$

$$\begin{array}{r} 5.440 \\ \hline 9.70 \\ 96 \end{array}$$

$$\begin{array}{r} 1405 \\ \hline \end{array}$$

26.7

$$\begin{array}{r} 15.70 \\ 37.40 \\ \hline 11 \\ 37.411 \end{array}$$

$$\begin{array}{r} 452 \\ \hline \end{array}$$

$$\begin{array}{r} 10.6 \\ \hline 10 \\ 10.56 \end{array}$$

$$\begin{array}{r} 802 \\ \hline \end{array}$$

$$\begin{array}{r} 39 \\ \hline 5 \\ 39 \end{array}$$

$$\begin{array}{r} 10.56 \\ \hline 9.27 \end{array}$$

$$\begin{array}{r} 3 \\ \hline 3 \end{array}$$

21.000  
2.800  
-296.500  
-372.500  
2.600  
33  
-6.400

0.665  
0.511  
-0.545  
-1834.671  
-57.261

0.030  
0.711  
0.702  
-1297.675  
-47.466

-0.747  
0.483  
-0.457  
195.147  
9.388

201800 21 10.3 50 48 FIVE -20.2

P314

5448963

81011627

Feb -21

-23

21.2

504

444

-23

5.45

✓ 20.2

-21.200

~~50.000~~

~~49.000~~

-23.000

5.450

123

-20.200

0.693

-0.108

-0.712

113.604

28.366

-0.005

0.988

-0.155

-108.428

-10.206

-0.721

-0.111

-0.684

-93.658

2.304



202783

29799

13382

120555

2125

-125

+31

-17.5

40

-18.5

13.932

326857

46615

-37

575

24.848

21.750

46598

322

566

-3

563

-104

486

569

569

+083

(336)

+0356

+037-0/257

+2

~~0495~~  
+0.2

21536

15.8

+0022±7.5

+0025

-12

29

8.0

df7 -18.58

+0028 -018 (early)

041-015

1902.5

-12

28

33.99

1900.2

+00235 -014.5

+00245 -014

+90

33.09

50.66 | 1934.75

15.92

3477

96

33.78

+32

33.46

4.57

36.834

33.715  
+15

33.51

33.48

+1.39

1937.40

36.1

(35.9)

215

21.250  
-12.500  
38.000  
-17.500  
4.000  
63  
-18.500

0.700  
0.358  
-0.617  
93.424  
17.315

-0.014  
0.871  
0.490  
-74.692  
-13.785

-0.714  
0.335  
-0.615  
-153.289  
1.709

202917

21 19 -53

21 174 -50 16

2572  
-72

243  
5325

+74

74

212

7

041 -077

+2

+043 -080

+048 -076

410-074  
4047-074

11

21.300  
-53.250  
79.000  
-79.000  
2.750  
35  
-7.000

0.707  
-0.124  
-0.696  
204.883  
12.142

-0.022  
0.980  
-0.197  
-372.021  
-11.818

-0.707  
-0.155  
-0.696  
-100.208  
1.276

203844

21 22.3 -08 24

Q1 Q2  
d61 -182 L(2)

-805645

2.83 +0.535 +1.52 255(2) Mc Linn

W13467

Q1 Q2 M+P

+1.17 ± 8 +1.19 ± 8

+71 +13 +3 .020

+53 +19 +1 .015

+0070 +121

+0092 +1222

+107

+108.5 +119

21.4

-8.4

+109.5

+119

305

-18

14214

1007 + 189

20056E

16059

+10020 +121

51.62

33.13

$$\begin{array}{r} \overset{-16}{2.11} \\ \hline 173 \end{array} \quad \begin{array}{r} +10020 +121 \\ \hline +21 \\ \hline 51.38 \end{array}$$

P11

16.444

70.45

46.73

$$\frac{-11}{437}$$

$$\frac{-11}{4655}$$

16.444

(67.44)

47.01

$$\frac{-23}{413}$$

$$\frac{-20}{47.21}$$

21.400

~~-8.400~~

~~100.500~~

119.000

3.650

53

-18.000

370  
4677

0.720

0.406

-0.562

598.760

42.280

-0.040

0.834

0.550

449.909

14.254

-0.692

0.374

-0.617

-144.513

3.345

206464 21 35.5 -08 42 P4V 7A

6200880

11 4  
+ 31

-002675 -010 55.5

48713 20 0024 003 3752 41

11 88

1188 1188 1188

1912 37.16

-8.7

37.41 33.03

11 8.12

8.78

-034 37.37

032-008

-4

4.1

4.14



21.660  
-8.700  
-32.500  
-4.000  
4.500  
79  
18.000

0.753  
0.410  
-0.515  
-122.380  
-18.992

-0.085  
0.836  
0.542  
-2.891  
9.523

-0.653  
0.364  
-0.664  
92.537  
-4.605

207583

21 47.7

-16 26 dGS-24eL(2)

GC30567

8.30 70.74

+1.675 885(2) McLenn

W13713

21.8

-1605952

16.4

-70

-43

-6 -39 +13 .030

2.4

-18 -49 +19 .015

240

-06454 -150510 X

-4 14

067143 0048

-140

1394

-100473

-1564

-003956.4

~~103~~  
~~124~~  
14075.2

52.205  
329.15  
418.24

34.096 93.2

-1050

4386 966

25.257  
250

~~198~~  
~~29~~

1008

~~26~~  
~~34~~

3323

1<sup>00</sup>  
4041

5822

16874  
22288  
39167  
40  
126  
129  
~~123~~

4219  
+ 4280  
4132  
4132  
4107

34.115

3362

4142

~~11~~  
~~100~~

~~24~~  
~~16~~

21.800

-16.400

-70.000

-143.000

2.900

38

-24.000

0.768

0.346

-0.539

-478.797

-5.276

-0.109

0.900

0.421

-575.389

-31.991

-0.631

0.265

-0.730

21.069

18.310

209133

2) 587 -25 06 FIVE 6.0

-25015718

+87 -30

-12 +10

+3 +2.5

22

+1 ~~+2.5~~

-25.1

+73 -20

+80.6

-20

6.2

+6

22.000  
-25.100  
80.500  
-20.000  
6.200  
174  
6.000

0.789  
0.277  
-0.548  
246.447  
39.541

-0.144  
0.951  
0.274  
-139.770  
-22.642

-0.597  
0.138  
-0.790  
-219.346  
-42.860

210266  
+604970

22 06.6 +07 15 F7  $\bar{V}$  -2.9

+64 -21 4  
~~12~~ +6  

---

52 -15  
+56 -13

+81 -16.6 R2  

---

+56 -13  

---

+70 -14.5  

+72 -18

22.1  
+7.25  
+72.5  
-18  
4.55  
-2.9

22.100  
7.250  
72.500  
-18.000  
4.550  
81  
-2.900

0.799  
0.525  
-0.294  
227.592  
19.351

-0.161  
0.657  
0.737  
-110.812  
-11.144

-0.580  
0.541  
-0.609  
-243.757  
-18.047



207790

21 49.5

-40 45 <sup>+26.4</sup> 60 5

4,09718

78/60 5

-002-032

-0022

-002-035.5

218

-40.5

-2.5

-35.5

46

+26.4

21.800  
-40.800  
-2.500  
-35.500  
4.600  
83  
26.400

0.768  
0.092  
-0.633  
-22.400  
-18.581

-0.109  
0.994  
0.012  
-166.269  
-13.514

-0.631  
-0.060  
-0.774  
15.759  
-19.119

+368-21400  
+0251±10.6 -062±12.2  
+0240 -014 G-1E

210483 22 08.0 +18 33 7.9 667 -726

+348 -036

31023

13937 1.671 1901.7 +18 33 1.64 19033

1.212  
0.459

2.90  
4.54

221  
+18.55  
+263  
-87

102 1.204  
3205 254

+250.587  
354

4.01 19344  
14  
4.15

42  
37.1  
33.8

7.54 + 57 + 08  
46.6  
2.90  
361

420  
310  
485  
+851

3.77 1939.82  
22  
3.99

4.07  
47

5  
+0244  
+350 -041±04  
-347 +9 = 032

-22.100

18.550

263.000

-37.000

3.100

42

-72.000

0.799

0.572

-0.185

843.907

48.512

-0.161

0.500

0.851

-277.525

-72.850

-0.580

0.650

-0.491

-798.967

2.062

209502 22 026 25- 1.20 22 22 026 25- 43 00 25

209

1041 -030 ✓

25 1011 1.5

22

1041 -026

25-  
1.95

1049

1048.5 -030

1.885

25-

25  
1.8

22.000  
-56.700  
88.500  
-30.000  
3.000  
40  
-8.000

0.789  
-0.051  
-0.612  
189.009  
12.420

-0.144  
0.954  
-0.264  
-168.691  
-4.600

-0.597  
-0.297  
-0.745  
-95.303  
2.169

201602

22 029 -07 56 FLE 17

96508

96508

~~952-276~~

~~93 +4~~

8002-4008

~~779-222~~

~~2205~~

012 710

~~-7.9~~

~~72~~

~~+82.5~~

~~782-24~~

~~ne~~

43

17

9184 9842  
0650-5000

210266

22

066

51005

2.5.2

+6.4970

7004 019 (Land)

510 → 170

8402	1544	2845
4290	3383	1838





210194 22 023 -66 35 8014 +40.3

FR 14/14

1603630

10009 -000 C

-16 -8

10009 -035

10004 -033 22.1

-66.6

+2.5

~~10024~~  
~~10025~~

[10011 -030]

-37

5.0

+40.3

22.100  
~~-56.600~~  
2.500  
-37.000  
5.000  
100  
40.300

0.799  
-0.136  
-0.586  
27.634  
-20.844

-0.161  
0.890  
-0.426  
-156.902  
-32.859

-0.580  
-0.434  
-0.689  
73.474  
-20.438