

+4120 +3180 GC

Feb 19

5/10/91 L-17

21 047 +38 30

605409-9

5.19 + 119 + 110
4.58 + 0.46

125 II
- 640

(LB) 2181

6.06 + 127 + 123
5.26 + 0.595

127 II

(337)

21 03 00 +20 30.5

.75 1576

C-144-58

21 01.9 +20 25

15.8 +3

X 1228-648 T

0015 (B) 2nd

13.55 +0.925 13.575
 13.42 +0.875 14.295
 13.48 +0.90 (2)

X

12.58
 13.64 3.15
 14.7

G144-58



GC79631

-115 -895 GC

LFT1614

21097 +17 82

41704519

7.37 + 0.51 = 0.17 (4)

2820H

H

.041

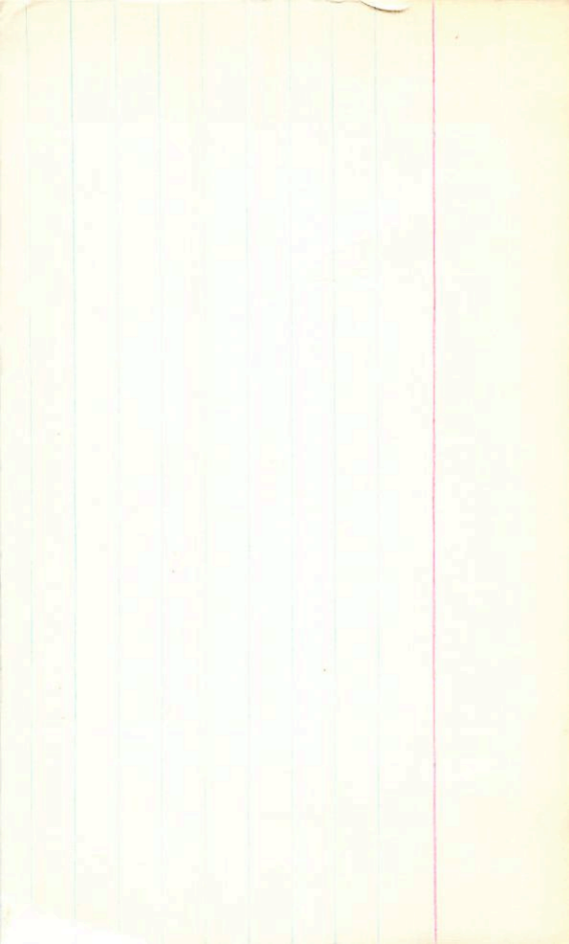
81m7
25-165

7.20 + 0.20 = (2)

198102GH

7.0

X



201891 21 10 42 +17 37 7.38 +51

7.36 +0.51 -0.17 20 Sept 71

7.36 +0.55 -0.15 29 Sept 71

7.38 +0.50 -0.18 North

7.39 +0.49 -0.19 North

7.37 +0.51 -0.17 (4)

7.38 +51 -09 (R)

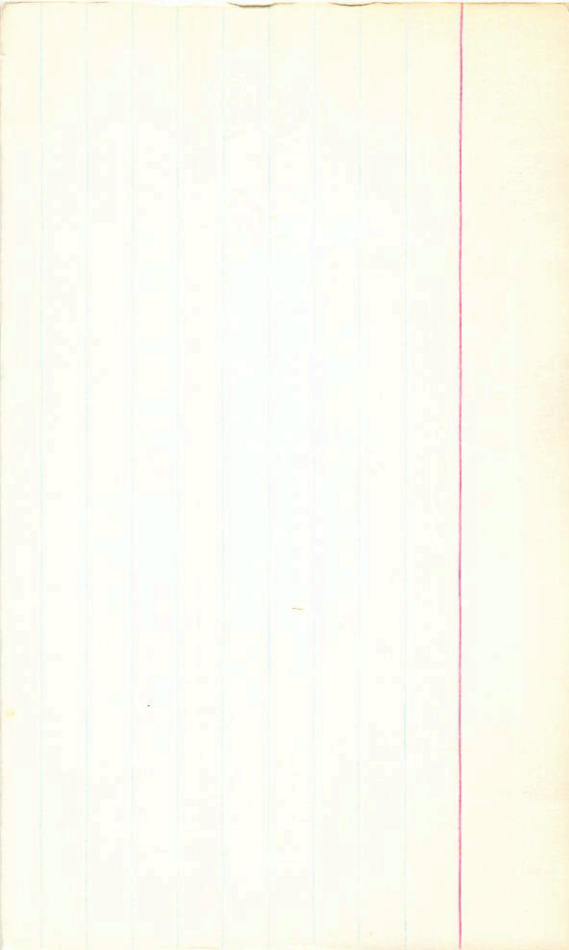
7.21 +0.21 23 Sept

7.19 +0.19 27 Sept

7.20 +0.20

7.24 +225 12 Aug 77

7.29 +215 17.10.77



+180-660 I mms

.717 164 BPM

I mms

21 90 10 -43 42

LFT 1610

21 08.5 -43 48 12.8 M

-41014334

S

(1)

.038 (32)

127 FC

4.15
14.15

50 89

X

10.91 +0.97 45.47

15.04
10.84
10.88
10.955 (2)

9.4

X

45.47
14.47
40.955 (2)



21 21 44 -16 57.5

0.715 14.9

LP 817-20 21 20 21 -17 03.8 14.3 15.8 nm

X

1.195

1350 +1185 135476

1382 +1125 141277

1386 +1155 2

X

12.7

BPM13974

21 21 16 -61 21.5

.750 135 BPM

LFT1626

21 19.2 -61 28 15.7 m

14.2

S

L16457

3663

X

OK

• ○

12.80 +0.825 45.76

12.74 +0.795 14.77

12.77 +0.81 (2)

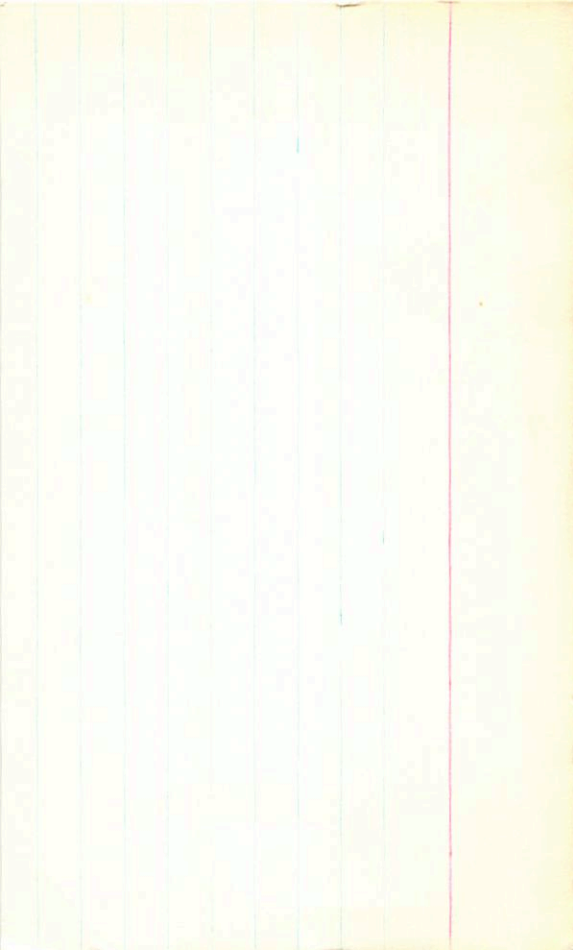
X

11.9

11.96

f 212-29 21 09.8 + 26 22.5 16.3 + 2

.71208



171 2000

✓ BMS778 (RI) 21 26 34 +7 11.5

LFT 1632 21 28.3 +7 05

G25-32

11.59 + 1.55 + 1.22 SK


10.55 + 0.845 48 Septa

10.55 + 0.755 20 Septa

10.56 + 0.95 20

9.7

G25-32



BP 1149061 .793 195 BPM -75 -825 CapM
-13 -793 CR

LFT 1640 21 30.3 -49 13

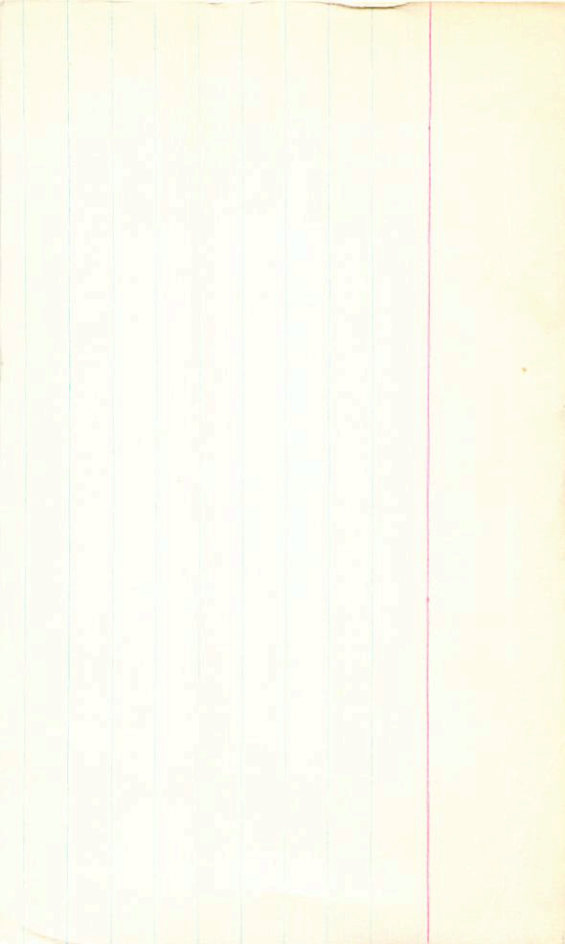
-490 BS15 cob

HD 264661 AD (23)
-4911439C AD (23)
.269

8.67 +1.50 -

111 E 7.55 +093 (2)

+



BPM 48964

.728 96 BPM

21 22 34 -46 48.5

LFT 1627

21 20.9 -46 55

139 m

L353-143

4

X

740

gale

11.37 +0.97 45476
 11.29 +0.94 1411677
 11.33 70955 (2)

1037

Waff 940

h FT 1660

21 44.1 -00 2bf

B26-30

+760
-515

0.6
+369

↓

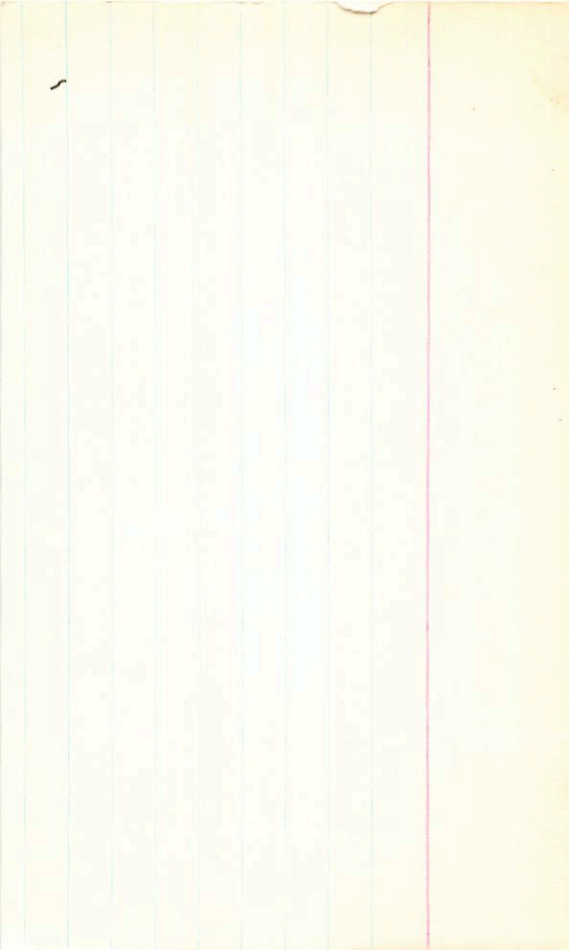
12.78 + 160 + 1.27 ①

11.29 + 119 ②

10.1

Waff
G
8PM

$\begin{matrix} .95 & 123 \\ .85 & 123 \\ .205 & 125 \end{matrix}$



BPM 81984

RI

21 45' 14 -3 00

.74 90 G
.664 96 BPM

LFT 1659

21 43.9 -3 07 140 +2

L 1003-36

12.70 +1.42 +1.14 SM

G26-79

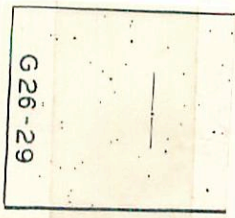
X

11.86 +0.665 45 Aug 77

11.83 +0.645 14 Aug 77

11.84 +0.655 (2)

112



G 26 - 29

conv T 005-000 WDP 461 498

I mms

LFT 1657

21 424 12
575 - 624 12
54 54 - 54 54

5508155

④ 5114 + 132 + 115
8.80 + 132 + 08.8

HQ206804
0.0460

④ 85.04 108
801 + 0.58

Dm--0

+75-923 CP

Q283

orbit

X

743
546
477
460

6-198-28

✓

21 51 04 +27 11.5

21 49.9 +27 11.5

15.2 +3

→ 79 157 G

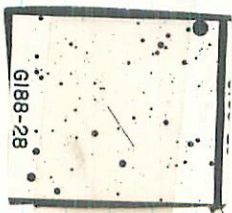
12.81 +11.85 13.54

12.44 +12.05 24.49

12.75 +11.85 24.60

11.55

+



G188-28

✓

B-148-26

21 47 09 + 27 49

21 46.0 + 27 49

13.8 + 3

170 196

+

10.80 + 0.925 45472

10.87
10.945 144477

10.82
10.935 2

49

+



G188-26

ways

LFT 1664

21 46.0 450 00

15.1 43

Q-212-59

177 58 0-3
185 64 way

Way 1567

LFT 1669

G 215-22

21 52.9 448 07

13.9 43

.77 206 G
.70 214 way

BPM27610

.899 95 BPM

LFT1671

21 553 -58 17

L213-75

14.11 +1.555 +1.18 (2)

12.75 +1.17 (2)

11.6

+

BPM44254

1931 158 BPM

LFT1668

21 50.5 -45 53

L355-29

+524
870
565
+120

x

14.19 +1255 +0.86 (2)

13.50 +0.535 (2)

Bis

HHS 3732

(X)

LFT 1668

L355-29

21 54 40

-45 48

21 52.8

-45 50

134 mm 158°

" 0.43

8m

14.20 + 1.26 + 0.76_h 7 out 70

14.18 + 1.25 + 0.975 30 out 70

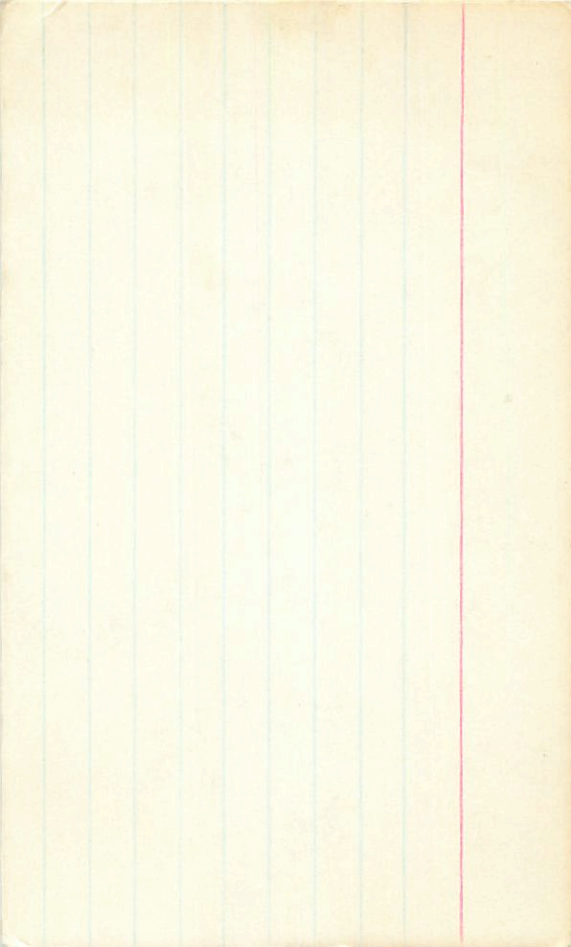
14.19 + 1.255 + 0.86

13.51 + 0.54 8 out 70

13.50 + 0.53 27 out 70

13.50 + 0.535

13.42 + 0.516 24 out 70



BPM 14486

.876 96 0 AM

LFT 1672

21 55.9

-60 00

-6007421

978 + 149 + 119 (2)

(23) HLG

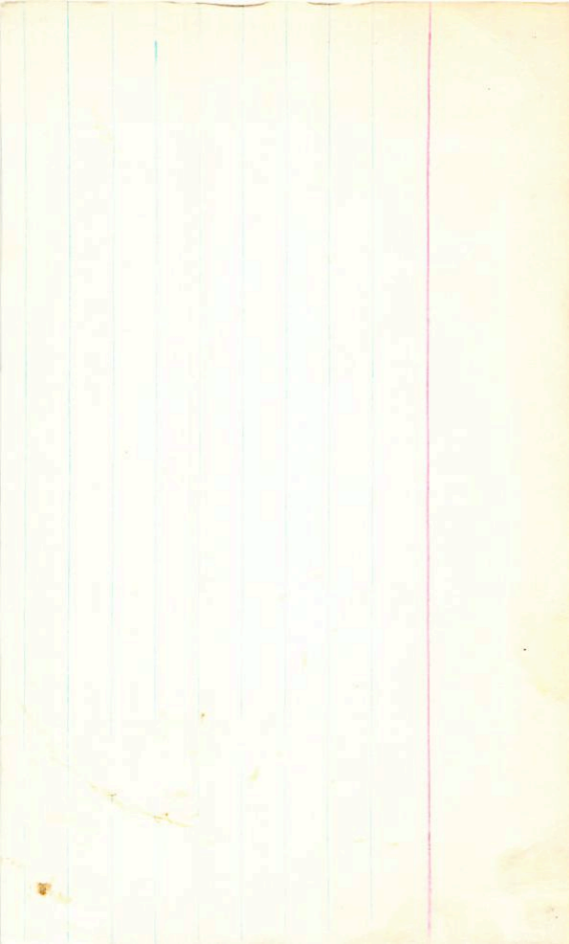
8.76 + 0.82 (2)

Yours

211 151 ~ 131 776

+

hgl



.710 + 180 way

.72 79 G

21	5406	+32	31.5
21	53.0	+32	27

(R)

G2

W04/1143

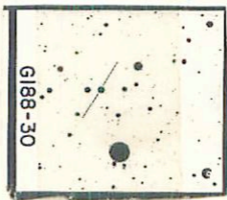
LFT1670

~~14.8~~

198-30

11.09 + 0.67 - 0.06 (4)

1,008 (27)



819-23

375-4
RC

22

Real only

Try again

in 15"

↓ ⊙

↓

opt.

03 30

No stem
of the device

-19 52.5

MB 13.3

MB 14.8

0.855 110°

13.07

+1.026 18 Aug 20

Ollongren, A. 1962 B.A.N. 14, 29