

Cin 20-1153

+450 +700 Cin

192 310

LFT 1479

19 250 +49 21

+4903009

8.03 +0.92 +0.61 (2)

H0143255

041 50

Q286-72



44  
G208-45

19 52.3

+44 17.5

15.5 +3

16.5 +3

9"

.71 1406



B8m94927  
491 2280

C92-34

19 8134

+4 35

19 50.3

+4

315

15.4 +2

.72 2196

✓

~~check~~

13.70 + 139 + 0.93 55

13

76  
12.74 + 0.755 13 Sept

[OK ?

12.04

+ 0.65

22 1977

12.73

+ 0.725

1414.77

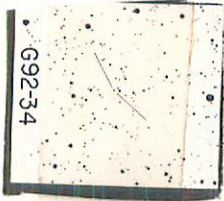
12.78

+ 0.78

2 150"

X

G92-34



BPM 94812

19 54 22 430 26

175 213 G  
1748 212 BPM

LFT 1502

19 53.4 430 22

15.2 +2

13.7 me

L1501-91

435

G125-45

-417 -632  $\pi$

0033 (50) KNO

6125-45

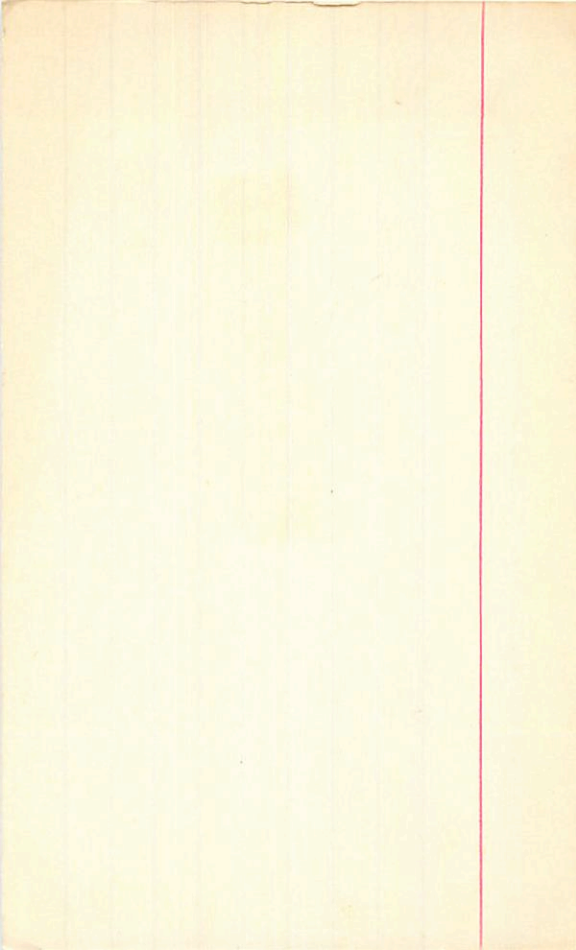


Eg 135 19 55 00 -01 13.6

G92-70

13.64 + 0.25 - 0.60

13.74 - 0.065 27 Jun 70



BPM 94852

G23-19 ✓

mixed in kFT

19 57 00 +1 58.5

19 55.8 +1 54.8

14.2 +2

182207 G  
184206 BPM

10.82 - 11.03 13 Sept

10.81 + 1.0122 10.77

10.82 + 1.02 (2)

x

G23-10

*Handwritten signature*

BPM80646

178 213 Q  
1840213 BAM

LET1503

19 53.9 -1 10

G92-40

-484 -645 II  
-441 -647 IT

1364 +0.25 -0.60 (2)  
13.71 +0.30 -0.61 *thin*

97 20 A

0.682 (15) unv0

0.596 sans lik

0.889 (30)

↓



GC27920  
VM

LFT 1514/5

20 01.4 +29.44

+2403872

625-55  
180

0.44 (24)

-4.2

66.2

14.38 + 171 + 1.08 <sup>stony</sup>  
14.40 + 157 + 1.16 (2)

A 14090360

14090360 (R)

057 (19) und

050 (23)

X 11.5

12.52 + 1.37 (2)

+675 - 530 GC

5.78 + 0.74 + 0.34 (4)

5.50 + 0.245





Imos

1855 174 BDM

LFT1509/10 19 59.2 -65 44 41

16" 4134

225  
165

-865 11

4103

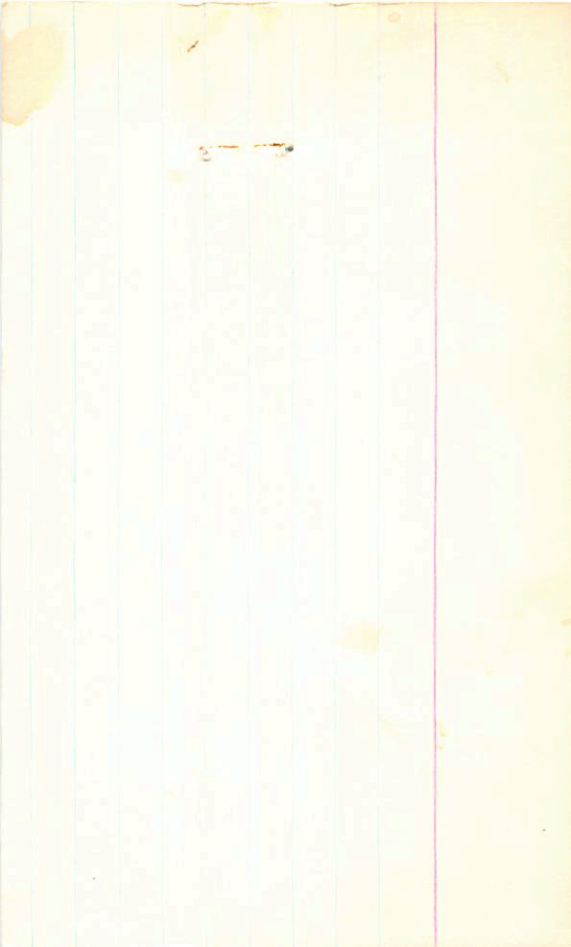
1134+1.47+1.02 (4)

10.11 +0.965 (2)

12.85 +1.55+1.04 (4)

11.57 +1.11 (2)

753-98 X



WHS 3511

G-23-24

20 02 34 + 5 56

20 01.4 + 5 51.5 14.3 + 2

192 212 G

Ad?

Hand

IB " 11 609

✓ ✓

12.09 + 1.61

x

10.54  
10.55  
10.56

10.55 + 4.54  
10.55 + 2.54  
10.56 + 2



4734.0

70 (BB)

L FT 1509

1510 Sh

19

54.2

-65 44

13.1 m

0.85'

149 m

1740

11.825

+1.49

+6.99

10<sup>1/2</sup>

10.00

+0.948 Oct 20

11.36

+1.48

+0.98

10<sup>1/2</sup>

10.22

+0.973 Oct 20

11.36

+1.45

+0.985

9.77 8.6

10.11

+0.945

12.89

+1.53

+0.945

91<sup>1/2</sup>

11.54

+1.115 Oct 20

12.98

+1.53

+1.016

11.55

+1.113 Oct 20

12.98

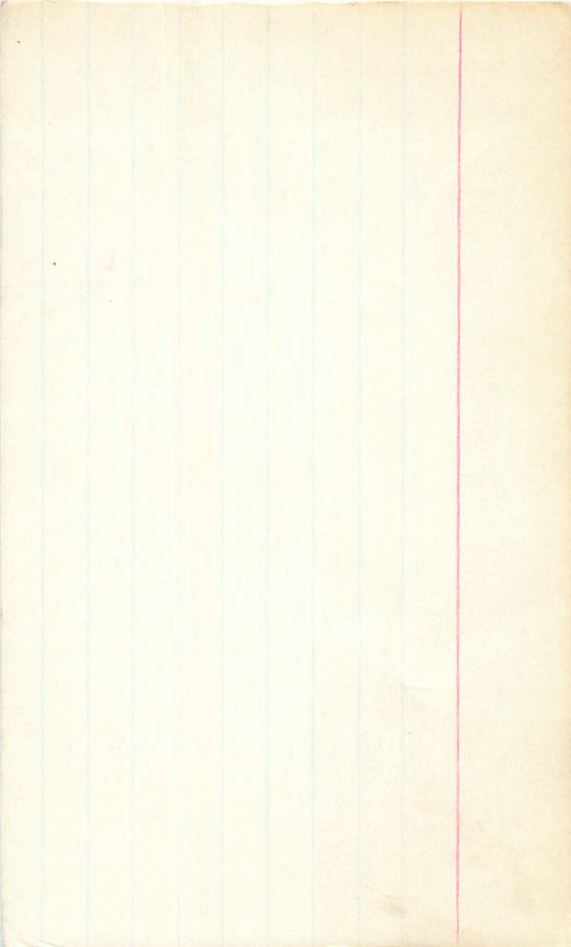
+1.53

+1.01

10.46

11.57

+1.918



20042-1934 •

0.731 213°

814-21

20 05 50 -19 29 11.22  
12.8

Tungsten

~~Northrup~~  
~~Drift~~

0



→ 10.82 + 0.522 18 Aug 79  
10.70 + 0.417 20 Aug 79

3521

DO 05 55-1929 11.2-10.8<sup>m</sup>

$w = 0.8$

(+)

10.82 + 0.522

$$\begin{array}{r} 10.82 + 0.511 = 11.331 \\ 10.82 + 0.522 = 11.342 \\ \hline 10.82 + 0.516 = 11.336 \\ \text{53} \\ 10.8 \end{array}$$



41" 1260

LPT 1524

20 05

44

-31 50

12.4 ym

1525

13.8 ym

10.85 +1.055 15 Oct 73

10.87 +1.065 14 Oct 73

10.78 +1.045 13 Oct 73  
10.53 +1.055

1225 +1.54 +1.11 17 Oct 73

-95 95

10.40 +1.15 18 Oct 73

10.96 +1.19 14 Oct 73

10.40 +1.24 13 Oct 73

1249 +1.60 +1.07 17 Oct 73

10.92 +1.255  
+1.20

9.7

55-  
16771  
2002-4

1426  
1640

QPM69429/31

.785 158 QPM

LFT1527/5

20 046 -31 54

L565-622/3

41"

.045 ⑩

12.25 +1.54 +1.11 ①

10.83 +1.055 ③

12.49 +1.60 +1.07 ①

10.92 +1.20 ③

[3516]

20 02 50

-31

45

130

14.5 m

Open end 3525 181  
3824

⊕⊕

Small

200

12.89 +13108 Sep 80

12.89 +13159

12.89 +1310

11.6

4770 -1356C

GL28057

LF+1532

20 10.3 -45 19

-4500677

802-1143 +1.13 (2)

40191849

160 (36)

702-10.73 (2)

6.3

723

X

806.04

20 09 20 -25 39.5

0844 1650

LP870-45

20 07.9 -25 43.4 14.2 16.2 m

07 57 -25 43.4

LHS 3525

2 15" final

Corrected

1950

for " "

→ 20 07 54.2 -25 43 50

marked  
15" "

X

Innes

4920 - 220 Innes

.827 120 BPM

LFT 1541

20 18.6 -58 26

-5807234

11940

1045 (18)

10.62 + 143 + 1.15 (2)

9.78 + 10.68 (2)

4755 - 434

X

~~14491~~

+ 1441  
- 434  
2.10  
266





BPM65707

1885 193 BPM

LFT1548

20 24.5 -27 53

-25011676

4864

11.44 + 1.505 + 1.13 (2)

10.26 + 1.04 (2)

-076 (12)

-256 9.2

0.8

X

0.4

,12

$$\textcircled{101} \quad \boxed{20 \ 28 \ 34 \ +9 \ 36.5} \quad .71 \ 81 \text{¢}$$

$$6-24-16 \quad 20 \ 27.4 \ +9 \ 31.5$$

$$+668 \ +132 \ \pi$$

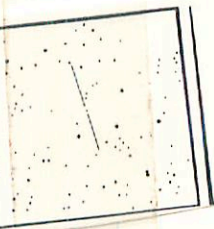
$$13.04 \ +173 \ +1.27 \ \textcircled{1}$$

$$0.113 \ (43) \ \text{and}$$

$$\begin{array}{r} 11.34 \ +1.36 \ \textcircled{1} \ N \\ 11.57 \ +1.34 \ 27 \ \text{Jan } 1970 \\ \hline 17.46 \ +1.375 \end{array}$$

X

G24-16



Receiv

LF71551

G269-33

20

29.5

+38 23

15.4 +3

175-146  
1751 18 BPM  
17000

