

LP 71-157

18 17.6

G-260-1

LP
G
-710-1675
-700-1575
+69 32
16.7 +4

0.34 y/a wt 1.0

RV
18 48 43 + 11 16.5

185 2108

Q141-41 15 47.6 + 11 15.5 15.1 + 2

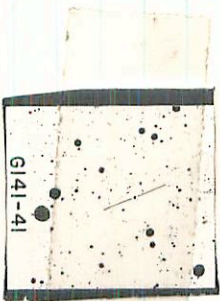
0:012-20^{nm}-352-755 J

Agave ✓

11.86 + 11.4 + 11.8

12.87 10.285 vs 21

12.92¹³² - 10.615^{18 July}
12.86 + 10.60^{22 July}
12.89 + 10.605⁽²⁾



722-180 000

1789 103 BPM
0000

Boooy

18 48 13 -23 51

6 FT 1437

19 467 -23 53 12.4 M6

BPM 4119

10.55 - -

22
200
200
214

4336

1340 32

243 + 100 52

215

4641 170

BPM93379/80

.882 174 BPM
.80 172 Q

LF 1421/6 18 89.0 +3130

+31330

8.54 + 0.94 + 0.635 ②

3230

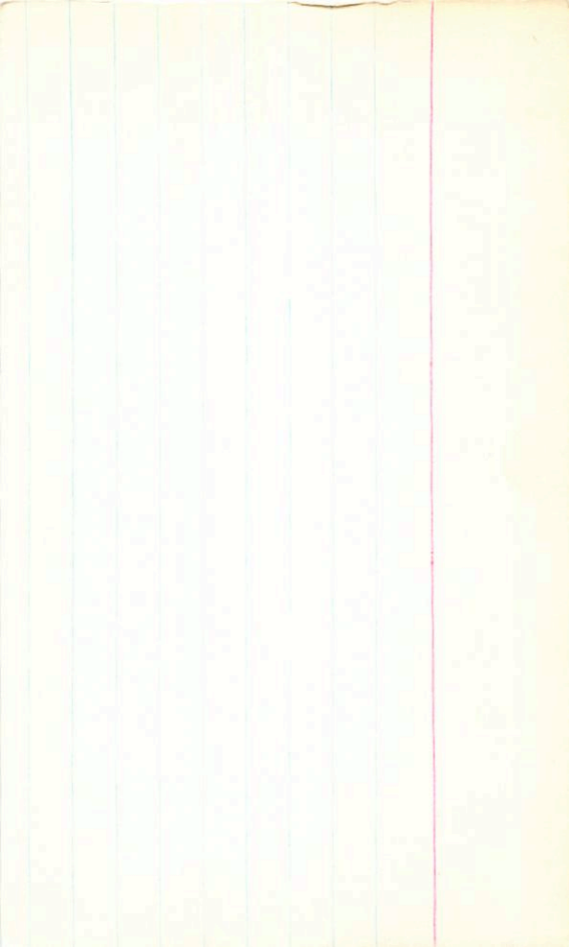
9.04 + 0.36 ②

AD511516 9-11.6
9

11.53 + 1.58 + 1.18 ③

6204-39

10.40 : + 0.89 ~~①~~ ①

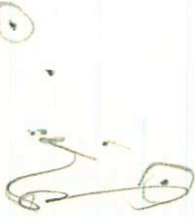


BP M11794

LF T1438

L155-20

∫ S:



116

18 49 50 -60 48

18 47.6 -60 50

.205 300 BPM

15.2 m

+1.175 Y Sept 76

+1.185 6"

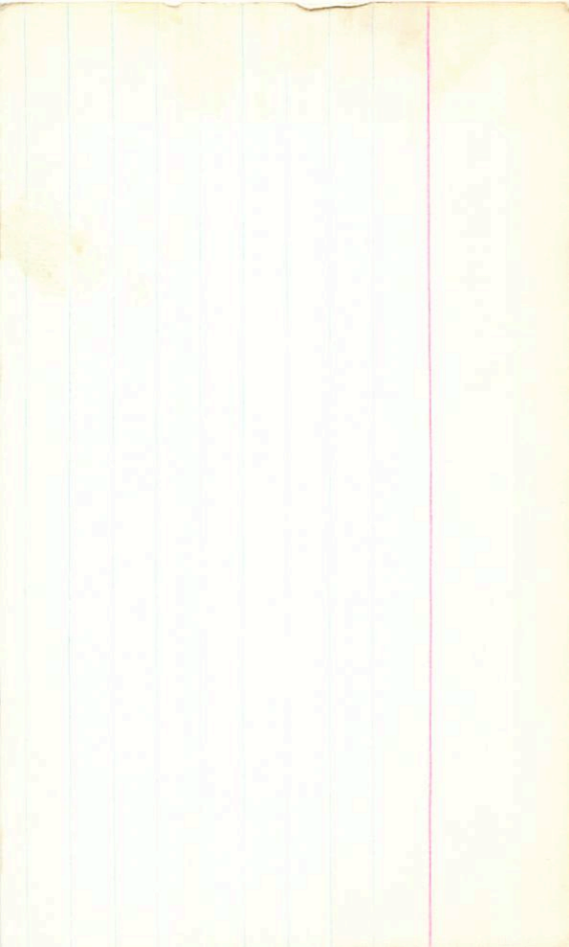
+1.18

12.03

11.58

12.01

12.03 +1.175 Y Sept 76
11.58 +1.185 6"
12.01 +1.18



LFT 1439 18 48.5 - 57 10 134 h-m

L207-23 .025 (14)

0.80 1550

~~11.02 + 0.715 80070~~

12.17 + 1.46 + 1.13 70070

11.06

+ 0.96 29070

10.96

+ 0.97 31070

11.01

+ 0.965

6.66

141-211 (R) 18 48 43 +11 17 15.1 +2 .85

✓ Key

11.86 +144 +115 King 36⁴

12.86 +0.54 25 Aug 77

12.90 +0.64 17 Aug 77

12.18 +0.68 23 Aug 77

12.88 +0.615 (3)

X

MD0351 003.

18 50 35 - 57 08

BPM254B

LFT1439

18 48.5 - 57 10

134 h-m

L207-33



S

248 - 769

Green

1056 + 057 310270

1106 + 096 296270

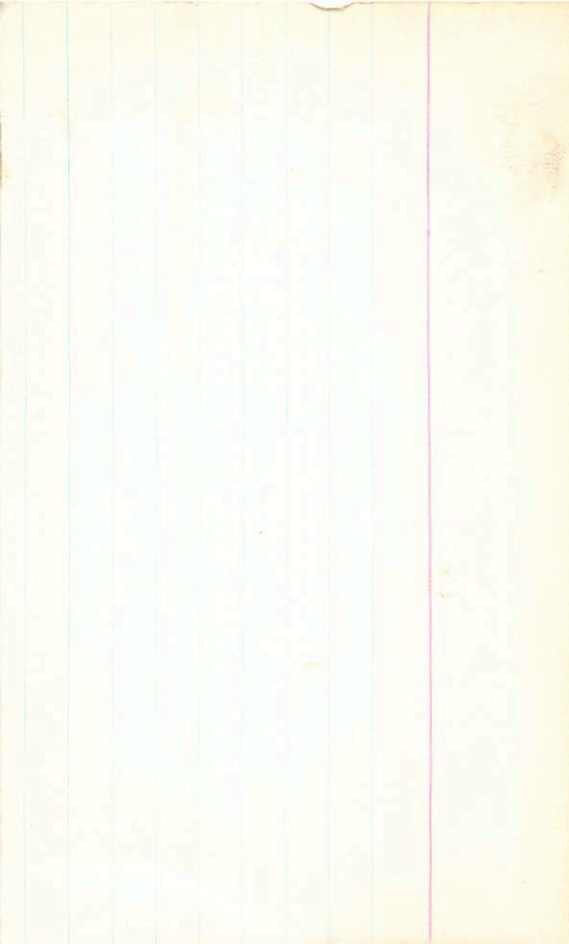
1650 + 059 45276

1100 + 111 22477

+



85.01
10.58
85.01



7481

189-20

19

49

46

-60

48

15.2m

0.70300

*

Wing

12.10

+1.505

+1.045

26"

~~+0.975~~

84m75

12.17

+1.46

+1.13

Shapley

1735 231 BPM

19 02 40 - 13 35 K

LFT 1445

19 00.6 - 13 35 15.7 MS

6850-62

1307 1231
1187 1351

BPM 7442

~~3 1307 + 0.755 185476~~

x

13.27 + 1.255 280477
13.27 + 1.276 105478
13.27 + 1.265

340

BPM 44174

LFT 1472

19 19.6 +6 57

L 1134-93

-756 ÷ 435 π

~~12.34 + 1.11~~

622-26

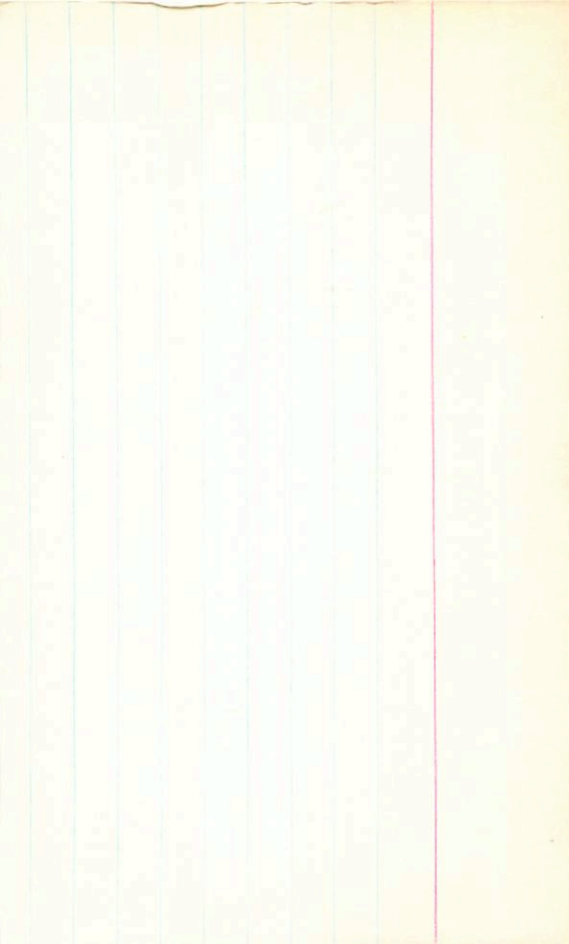
12.34 + 1.11 + 1.35 ⊕

10.59 + 1.065 ⊕

0.091 ⊕ 28 π 1100

+

182 242 G
1878 234 BPM



.70 3036

19 13 34 +19 14

P000733/4

LFT 1463/4 19 12.5 +19 14 13.1 +3

15.7 +3

.15

G185-12/10 NV ✓

9.16
1.56

45'

paper

10.30 +1.14 (3)

10.24 +1.14 22 July 77

10.36 +1.14 5 18 July 77

(10.20 +1.10 7 5 Sept 76

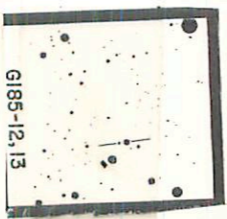
11.74 +1.16 5 4 Sept 76

11.55 +1.22 18 July 77

11.78 +1.22 22 July 77

11.87 +1.21 (3)

X 10.65
15



G185-12, 13

BPM93976

19 08 46 +17 37.5

.76 243 R
(.544 212)
.82 234

LF71454

19 07.6 +17 35

15.2 +3

L-1283-23

-648 -415 π

G-142-11

0.093 (23) 400

11088 1.35 Wm

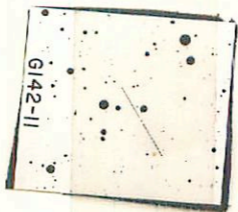
272

11.95 +1345 6 Sept 76

11.95 +1385 18 Aug 77

11.95 +1365 (2)

+



G142-11

C-207-30

RAM

19 21 42 + 24 23

19 20.7 + 24 20.5

16.4 + 3

.72 1746

I mcs

LFT1474

-45°13178

H9197B

CompFS18616

(1568 + P) *[Signature]*

19 20.2 -45 09

.003 (22)

9.66 + 0.145 - 0.26 (2)

~~9.56 + 0.19 (2)~~

9.82 + 0.19 (4)

X

933

- 75-820 Cays

.784185 BPM

Poss 163

LF 1473

✓ 19 19.8 +28 34

+960 +280 Ross
+851 251 TT

1.95 73 G
.891 74 BPM

123 +3

G185-19

✓ 19 20 50 +28 37

12.3 +3

BPM 941 F2

11.52 +1.42 +1.09 Stems

.051 (5)
.043 (24) WND

10.61 +0.88 6 Sept 76

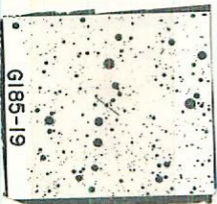
10.62 +0.86 18 July 77

10.49 +0.75 22 .D.

X

9.7

10.57 +0.86 (3)



G185-19

31 Aug
C-C-26809

LF 71477

19 22.6 +11 50

+720 +635 G-C

+1108833

6810 -598

5.18 + 0.78 + 0.42 (2)

✓ 4.90 + 0.235 (2)

14257
.059 (38)

4.65

835K

X

0020747

LF-1475

G-125-6

+90 +70V Pass .76 9 G

19	21	26	+33	50
19	20.5		+33	47

11.6 + 2

11.6 + 2

.024 (18)



G125-6

181743 → 19 21 54 -45 07 0.81

LET 1474 19 20.2 -45 09 10.2 F6

~~-450 13178~~ ~~214" (R)~~ 4.54 +0.185 8 Oct 70

9.64 +0.445 -0.27 26 Oct 70 9.59 +0.155 29 Oct 70
9.62 +0.46 -0.28 2 71" 9.56 +0.19

9.42 -0.175 12 July 77
9.55 +0.195 18 July 77
9.56 +0.19 (20) 550
9.52 +0.19 (4)



LF11497

19 478-5102

17.5 mm

1277-66

NO

LP926-1

3488

36
46 42

(+)

x

144
44

19 48 35 -32 44

19 416.7 -32 47.8

14.2 16.1 m

~~Good find~~

14.30

+0.73 22 July 77

14.00

+0.629 95/170

13.27

0.714² 2060

13.8 16.0 m

G128-24 19 220 +35 05 16.3 +3

-80 3586

