

-515 -845 66
-495 -830 11

17 37.9 +37 B

8.36 -10.60 +0.01 ②

8.20 -10.23 ①

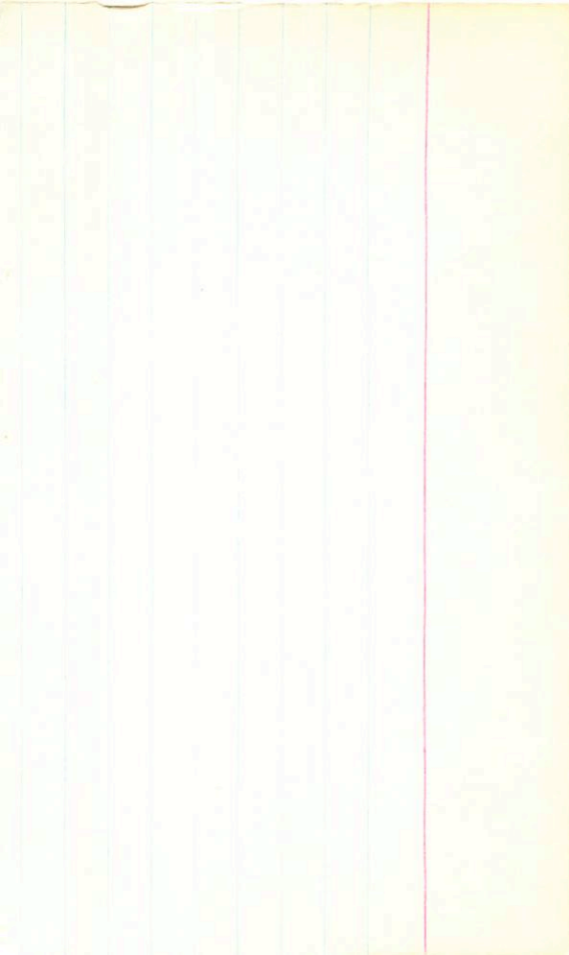
6623912

hFT1365

43702926

6-142-119

1.632④



-805 -940 BPM

BPM10757

LFT1349

17 23.5 -62 24

L15646

H28:

12.73 +1.51 +1.10 ①

10.15

11.36 +1.22 ②

-637
 -950
 0.55
 x28

X

17 24 25 +19 24.5

73 2036

G-170-37

17 23.3 +19 26 16.0 -3

~~V~~

V

(Nov)

14.30
14.31
14.30

+0.70 22 July 77
+0.68 23 July 77
+0.69 (2)

OK

X



G170-37

LF1130

1776509

17 20 15

-46 03

15.060.075

192

341-45

—————

✓✓

(1308 + 0.665 + 0.13 7 Apr 15)

10" NB

1400

+1.71

-

20 Apr 15

20 Apr 15

X

12.41

+1.08

22 Aug 17

✓



941 - 45

604471

LEFT 1367

T Stand

-840-454

walk

17 39.5 -8

-845-465
-905-460

Shaw

13.50 + 1.61 + 1.12

13.50 + 1.58 + 1.33

620-9

-42!

12.34 + 1.06

550
with
spec.
pub
spec.
639
1367
ANN

11.96
1.37
11.26

10.6
2.05
8.55

x

99.6

G204-24

17 3816 437 42 16.2 +3

'73 2856

1704 1910 BM
170 188G

17 41 08 -16 37.5

13.8g
14.8g

17 346 -16 37

✓
✓

BDM79017

1 FT 1368

177422

G-1545

11.85 + 1.01 45.176
11.50 + 1.03 22.2977
11.98 + 1.02

+

G154-8



Miter A
BC

-315-750 BC

LFT1374 JS

17 44.5 +27 45

C624185

118 (30)

3.40 +0.76 +0.40 (2)

118

24 3.16 +0.245 (Slt)

246 032 "

9.80 +1.50 +1.00 (2)

BC

8.45 +1.10 (Slt)

265

X

8.1

17 43 45 -1 00.5

.70 207 8

G-20-12

17 42.5 -01 00

14.3 +2

~~Chart~~

1470 +147 +094 5M

Wing #

NO

+0.315 14 Aug 77

~~13.41~~

+0.285 13 Sept 76

~~+0.265 19 Aug 77~~

13.44

+0.315 14 Aug 77

13.34

+0.345 23 Aug 77

13.44

+0.32 (3)

G20-12



17 51 48 + 14 39

.70 ALB

G-140-16

17 50.5 + 14 39.5

13.6 + 1

✓

12.18

+ 0.415 6 Sept 76

12.10

+ 0.39 22 Aug 77

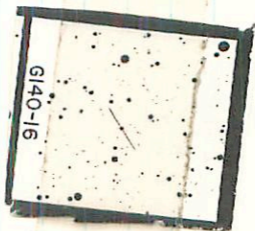
12.14

+ 0.40 (2)

12.1

+

G140-16



BPM 62264

17 51 35 -38 15.5

712 246 RP

LFT 1390

17 49.5 -38 18

12.7 158

-3807,246P0 ✓

✓

~~Print~~

11.73

3337

R ✓

1008 (12)

11.71

+0.27995, 170

1008

⊕

4.27

(NO)

11.54

+0.08 4 5476

~~11.52~~ / ~~11.58~~

~~+0.05~~ 148277

~~70.05~~ 70.05

⊙

50?

C204-32

17

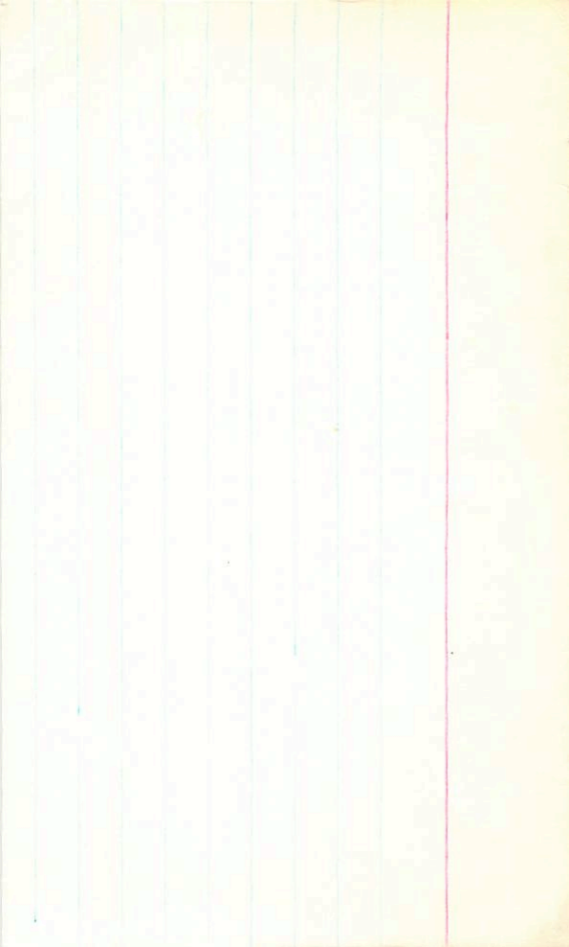
49.5

+39

43

16.0+2

.89 2306



Am 20-1070

.952 215 BPM
.94 211G

-450-690 Am

LFT 1387

17 55.8 -13 0.8

-1204907

Com 1-11-11

9.60 + 0.60 - 0.05 (2)

A051193F

9.39 + 0.245 (3)

HD143910

BPM 179200 @

G154-36

X

BPM 5265

17 56 53 -56 05.5

1725 212
BPM

LFT 1384

17 54.8 -56 05 16.3 m

L205-56

42

04 48.

9th E SHZ

~~Anchor~~

11.6

①

Washed

17 54 38.2

(BPM)

-56 05 17

way 31 18 14 30 + 20 30

-500 - 870 400
-445 - 840 800
-520 - 895 500
29 - 477 - 848 500
+ 151 + 2

LFT 1402 18 134 + 20

0183-22 ✓ 1, 2, 5
142105

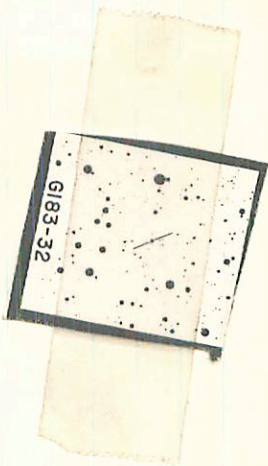
12.31 + 1.42 + 120 500

13.39 + 1.48 + 102 ①

.625 ⑦
~~0.017~~ ⑥
0.017 ⑥
0.017 ⑦ ✓

12.04 + 0.63 18 July 77
12.46 + 0.645 22 July 77
12.45 + 0.64 ②

11.5



✓✓

18 15 00 +1 31.5

178 214 G

LFT 104

18 138 +1 31

139 +1

L1064-75

12.55 +1.60 +1.34 SA

02157

414

✓

11.25 +1.015 17 Sept 75

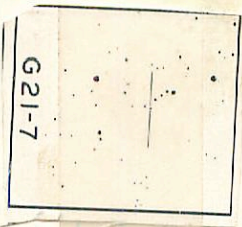
11.34 +1.075 18 July 77

11.29 +1.07 22 July 77

11.29 +1.065 (3)

X 10²

G21-7



84 196 2

C284-48 18 09.5 +40 23.5 15.3+1

~~15330?~~

BPM 11011

LFT 1392

L44-84

3348

(+)

x

17 57 20
17 56 ~~84~~

17 52.7 -77 41 15.7 mm
-77 41.5

17 52.7 -77 41 15.7 mm

✓ ✓

13.84

13.90

13.85

13.84

90

+0.550 9 Sept 80

+0.535 22 July 77

+0.535 23 Aug 77

+0.530 (3)

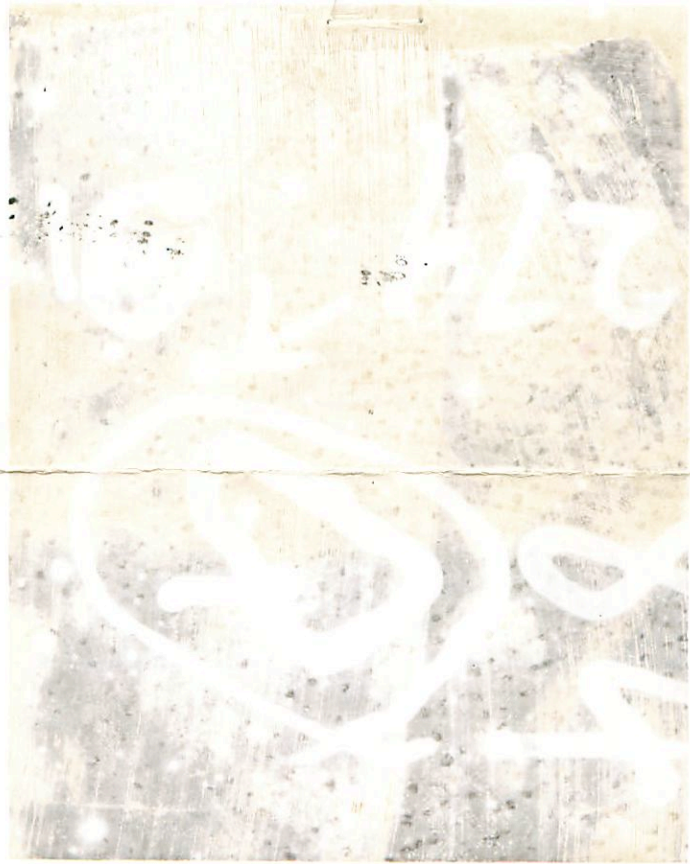
13.33

+0.535 4 Sept 80

1874 201 BPM



1382 - 11/15/50 CFB



1382

11

11

11

11

.73 1886
.632 1888 PPM

+010 -710 Rows

18 39 33 -13 24

18 38.1 -13 25 13.1 +3

Row 720

LFT 1424

-10⁹ 506

X

R 155-33

10.63 + 148 + 1250

0.51 (22)

9.51 + 0.835 1754715

9.52 + 0.835 174977
9.52 + 0.835 (2)

-100 2670

X 4301

90

G155-33



711820

Q205-26

18 23.8 + 38 20

12.6 + 3

7 Ser

-555-700 GC

LFT 1409

18 18.7 -2 55

GC25096

326 +0.94 +0.65

(S60)

1486864

2.90 +0.40 (2)

.054 (42)

14868723

284 332

241

241
241
241

