

Lomas

16 21.00 -48 85.5

-410 -460 I  
1753 233 BPM

LFT1269

16 19.1 -48 32 136 MB

L338.152

399-152

BPM 40169

X

047 (2)

3708

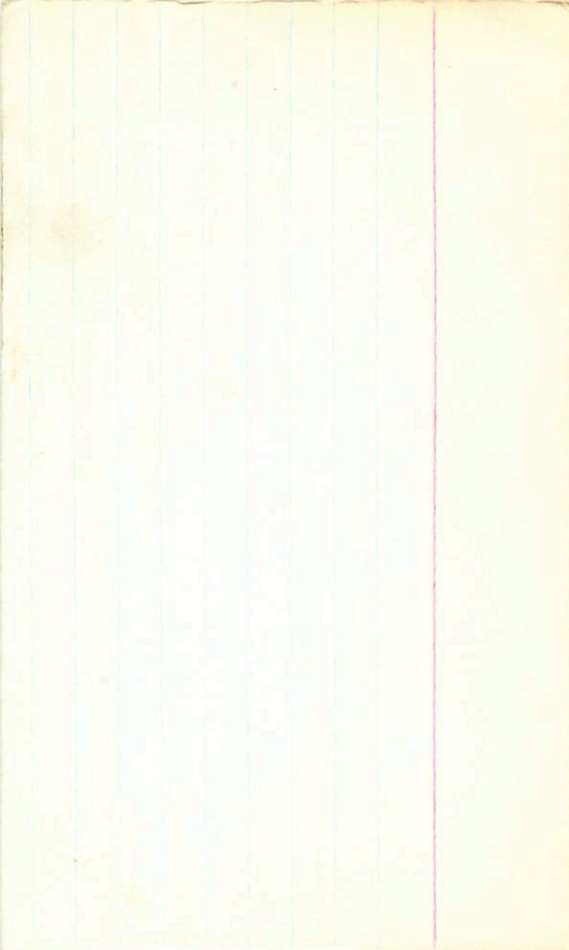
-589 -4916

I 58-196

10.60 10.985 8m 77  
10.75 10.895 14m 57  
10.65 10.99 (2)

9.5

X



Fungus

LF 1274

A140-58

14 26.7

44 44

12.165

173 148 G

175 200 F

-0.15 (10)



$$\textcircled{R\pm} \boxed{16 \quad 30 \quad 38 \quad +17 \quad 325} \quad .91 \quad 203$$

G-138-37

$$16 \quad 29.4 \quad +17 \quad 41 \quad 144 + 2$$

~~Handwritten scribble~~  $\rightarrow 13 = 742 \text{ II}$

0.052  $\textcircled{2} \text{ II MV}$

$$12.82 + 160 + 1.10 \textcircled{1}$$

+

$$\begin{array}{r} 11.57 \\ 11.50 \\ \hline 11.54 \end{array} \quad \begin{array}{r} +1.11 \quad 3 \text{ mg } 77 \\ +1.009 \quad 20 \text{ mg } 77 \\ \hline +1.10 \end{array} \textcircled{2}$$

G138-37

A rectangular inset showing a star field. The stars are represented by black dots of varying sizes. A diagonal line connects two stars, one larger than the other. The inset is bordered by a thick black line. The text "G138-37" is printed vertically on the left side of the inset. The background of the page is aged and yellowed, with a vertical red line on the right side and some faint horizontal lines on the left.

Row 640

.86 323 G  
Now  
Blau

LFT 1280

14 26.6 +36

52

~~12.85 +16-66~~ sh

G180-57

Jip

13.86 +0.18 -0.68 (2)

~~14.64 +0.52 -0.58~~

-499 +758 sh

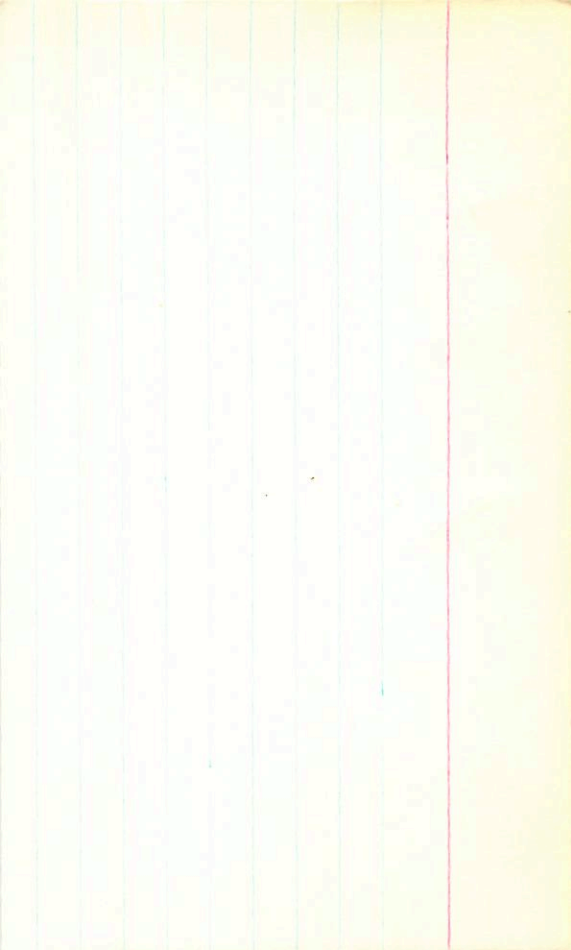
.059 ± 0.005 sh





C226-9

16 30.0 +54 06 16.7 +2



128-39 16 31 37 +12 40 13.6 +3  
.51

~~Cherry~~

Food

1286 +0.67 +0.05 1000 75  
"65  
"00

12.28 +1.445 +1.14 12 May 75 du"

(A)

138-37

16 30 28

+17

37.5

144 + 2

1.51

John

W

..

⊙

...  
...  
...

~~LL Ropes 55014~~

12.82 + 160 + 1.10 27.77  
40.04  
LL Ropes 01.14 07.14 28.81

.81 2626

16 31 48 +12 39.5

G-138-39 16 30.5 +12 40 13.6 -B

(RF)

12.28 + 144 + 1.14 ①

√

11.00 + 1.07 32m 27  
 10.55 50.14  
 10.58 + 1.06 ②

+

a.g

G138-39



5.02

6169-6/7

16 28436 + 27 01

1.93 2328

16 23.5 + 27 05

16.2 + 3

146 + 3

80"

-722 - 568

12.44 + 142

-722 - 545

1475 + 153

10.5

-811

1575

3.1

3.0

1027 + 608

023 + 985

18.6

11.53

+0.785

10.55

11.67

+0.805

008.025 (20)

11.60

+0.795

18.00

2.0

1.0

13.58

13.47

13.52

+1.16

+1.10

+1.13

18.00

22.00

(2)

x

62

16.400

27.100

-811.000

-575.000

3.100

25

42

0.000

-0.294

0.806

-0.514

-1191.593

-30

-49.674

0.633

0.567

0.527

-3711.833

-41

-154.735

-0.716

0.171

0.677

1985.361

44

82.764



BPM 78679

1655-45 -4 18.5

.755 123 BPM  
.63 125 G

LFT 1312

16 544 -4 10 14.1 G

L989-42

12.24 +164 +114 512

Q19-7

✓ ✓

10.77 +1235 3mg 77

10.84 +1235 18mg 77

10.80 -1235 (2)

955

✓



G19-7

14 49 37 -4 48

179 243  
173 254

Q 17-38 (RF) 16 48.3 -4 45.5 14.6 + 2

✓  
 $12.83 + 15.2 + 11.9 \text{ (1)}$

x  
$$\begin{array}{r} 12.10 \quad + 1.195 \quad 2m \quad 27 \\ 12.14 \quad + 1.175 \quad 18 \text{ July } 77 \\ \hline 12.04 \quad + 1.148 \quad 22 \text{ July } 76 \\ \hline 120.9 \quad + 117 \quad \text{(3)} \\ \quad \quad \quad 10.9 \end{array}$$

G17-38



6623011

LF91314

+470290

+0154345

.06135

17 012 +47 08

6.75 +0.75 +0.25 ②

+0.255 ②

+120 +840 6c



19-16 17 11 29 -5 05.5 13.3 +1 123

LEFT 1325

N

log ✓ -705

+143

3402

NV ✓

120005  
120005 (S) 120005

11.62 +7435 +1165

10.777 10.777 23 July 77

10.71 +0.76 3 Aug 77

10.72 +0.75 18 July 77

10.73 +0.755 (4)

RF 17 06 30 + 17.24

170 235

G 139-12

17 05.3 + 7 26

15.7+3

✓

1361+142 - ①

12.40 +1425 13 July 77

12.39 +1.42 18 July 77

12.86 +142 22 July 77

12.35 +1.42 ③

+





G139-12

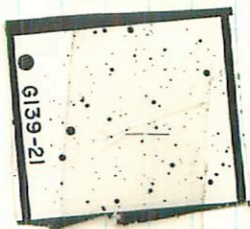
139-12 17 06 30 +7 24 15.7 +3

fly

N

1361 +1.92 - 120mg 75 36"





● G139-21

6-189-21

17

12.8

+5.02

15.7 + 3

17 14 84 + 5 00

① 41 15

Fingerring 48

LFT1341

17 18.3 +41 46

130+2

185 158 cm  
.87 161 Fing

G181-34



• 72 152

17 14 50 +30 39.5

17 13.9 +30 41.5 16.0 12

Q-181-33



W 0/6 46

LFT 1021

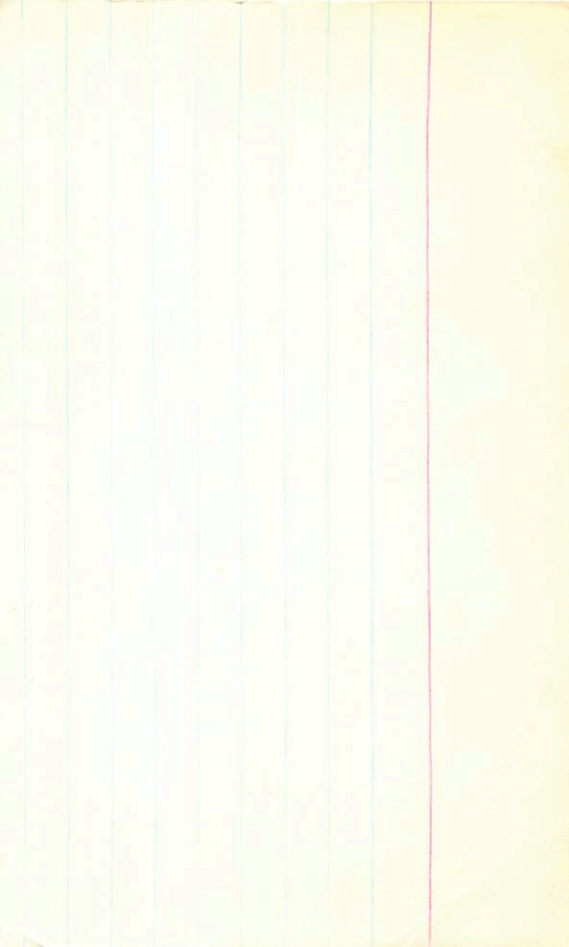
0-18 1-30

1 9 07.7 +39 14

157 +3

? part?

'68 171 642  
'80 180 604



BP M40942

LF41843

L34145



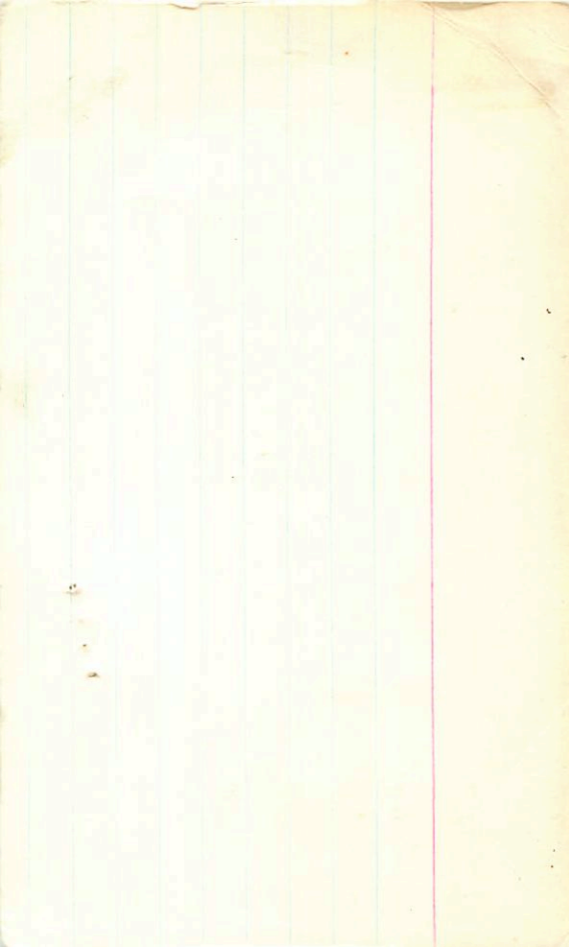
~~17 20 14 -46 02.5~~

17 18.4 -46 01

dr

.749 152 0000

12.39	+1.09	23 Aug 77
12.41	+1.08	22 July 77
<hr/>		
12.40	+1.085	



2013/11



7

3

40942

17 20

15

-46 02.5

150+10