

G174-33

15 28.0 +43 03

15.9+3

172 147 6

137-22

15 33 22 +14 21 14.5 +3

1.72

more red
more blue

John

N
⊙

13.65 ⁽¹¹⁰⁾ +0.835 +0.21 2 mg 75 40" CT

13.81 +1.65 - 1.2 mg 75 40" CT

13.83 +1.56 +1.06 study

12.76 +0.485 2 mg 75 40" CT
+1.225 3 mg 77

Pass 512 $\frac{1}{2}$ (15)

15 33 20 +14 21

LFT1209

15 32.2 +14 26

172 2560-
177 2641 Pms
1666 2580 show
148 43

B13722

047 (19) (15) (14)

13.81 +165 - ①

1380 1.561

✓

12.47

1205 22 Aug 77

12.55

11215 18 Aug 77

12.52

11225 3 Aug 77

12.44

11205 12 Aug 77

12.49

11214

1126

④

G137-22

RI ✓
15 33 25 +2 17.5

.88 2036

G-15-26

13 32.2 +2 23 14.5 +2

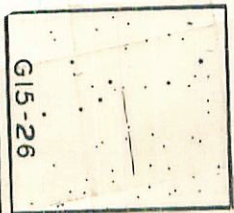
✓

13.52 + 1.47 + 1.24 5 5
13.40 + 1.48 + 1.15 ①
13.46 + 1.475 + 1.195 ②

X

12.61 + 0.74 37mg 77
12.61 + 0.72 19mg 77
12.61 + 0.73 ②

G15-26



1000802 ~~1000802~~ 15 35 36 -14 02

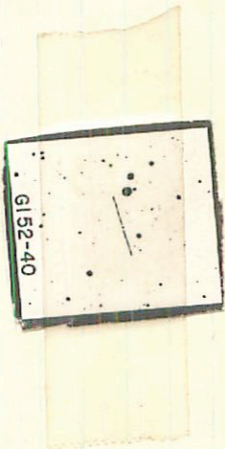
.74 2186
BPM
P000

LFT1214 15 34.2 -13 5.7 14343

G152-40 ✓ ✓ 12.72 + 1.585 + 1.30 ①

10.1.2

X 10.1.5
11.49 + 1.235 10 July 77
11.29 + 1.225 18 July 77
11.32 + 1.223 22 July 77
11.37 11.23 ③



G152-40

BPM40977

15 34 41 +22 14

.74 262 G
.770 267 BAW

LFT1213

15 33.6 +22 14

13.8 m

(B167-51)

✓

11.43

11.155 22 June 77

11.41

11.175 12 June 77

11.51

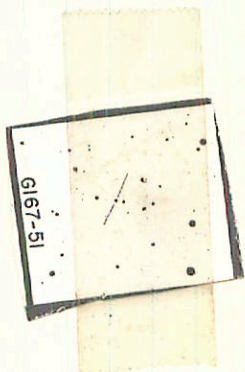
11.155 18 June 77

10.3

11.48

11.16 (3)

+



G167-51

BPM 5995/

15 38.04 -37 48

LFT 1212

15 33.5 -37 43 13.5A

L480-69

① none of AK

Ag 6.5

11.47

10.83 18 July 77

11.51

10.83 22 Aug 77

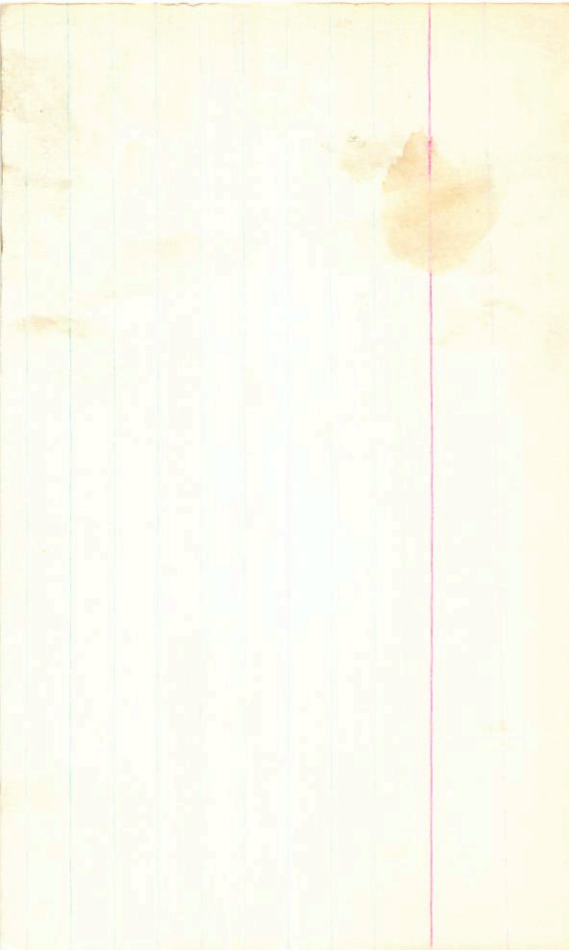
3097

11.49

10.83 ②

+

.840 202 BPM



170 165

15 56.3 439 11 16.1 43

C-180-17

7 Nov

WF1229

15 50.9 442 35

+435 +630 AC

GC21340

HT5914

.056

(85)

F9E

4.60 +0.56 0.00 (2)

440 +0.205 (2)

HS14203

BPM 91070

188 3176
1872321 BPM

LF 1228

15 47.8 + 34 58

15.2 m

L1489-5

149-12

B174-57

RF 15 58 43 + 15 04

.83 207 6

Q137-74 15 57.6 + 15 09 15.3 + 3

-441-734 TT

13.93 + 1.58 - ①

14.00 + 1.58 + 1.13 str

0039 ⑫ 1110

12.82 + 1.145 3 Aug 77
 12.93 + 1.155 12 Aug 77
 12.97 + 1.15

12.7

+



G137-74

BP 60430

15 55 05 - 34 40

LFT 1239

15 57.8 - 34 35 15.2 m

L 55379

31M

A

✓

4

...

12.33 + 1.115 15 July 72
 12.30 + 1.065 9 Sept 70
 12.32 + 1.090 (2)

x

11 23
109

1850 254 RPM



553-179



553-179

951024.

Q-5000 15 5-7-9 +58 28 16/11 27

LP 100-281

PCB

-200-775 GC

LFT 1241

15

59.1

+33

27

GC21527

5.42 + 0.61 + 0.08 (4)

1425965

+ 0.205 (1)

HD 143761

.042 (22)

48 dib

GC2144

RF

15 5834 -14 27 -630-400 RL

LFTD35

15 575 -16 23

-160496

5.44 to 52 +0.02 (3)

125 (20)

HD143333

5.34 to 165 140kg 77

14R5554

5.5

✓

± mes

18862140PM

-425-800

Copy
± mes

LFT 1265

14 16.6 -48 06

-47010664

AD146900

0PM 40148

48
,033

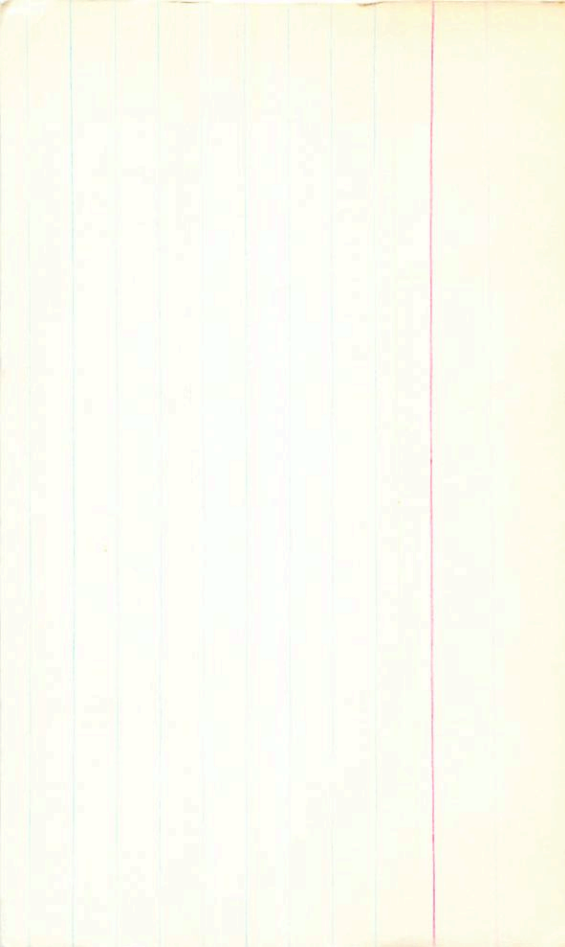
8.95 + 0.95 + 0.65 (2)

8.61 + 0.335 (4)

0214458

-0411-740 Y + C

X



BPM 91238

hFT 1254

14

10 59 + 5 33.5

16

097 + 5 38

12.5 112

L1130-41

G16-34

60

HFT 1254

VX 20114

11.90 + 0.97 = 10.76 515

10.372 - 2.57 = 11.35 + 0.370 24 Aug 51

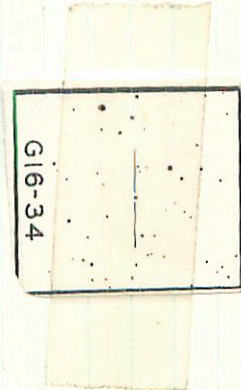
11.45 + 0.40 = 11.41 + 0.365 = 11.43 + 0.38 = 11.35

0.340

X

175 210 2
.645 210 0 PM

G16-34



662724

RI 14 08 12 +6 RB

+235-74522

LFT 1251

16 06.7 +6 31

+603169

~~406014~~ X

5.95 +0.99 +0.85 (2)

170 TV

.026 50

4014514

IB (X) K

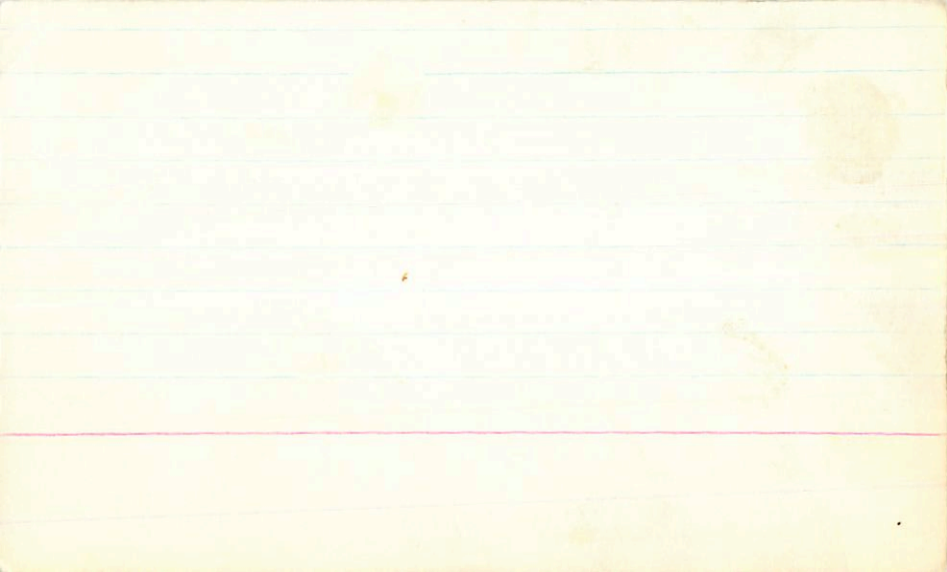
5.50 +0.36 14 Aug 77

6-14-32

+0.32 JCA
+0.34

+0.340

X



Pass

LFT 1270

-240 12677

V₇₂₁

N₂ - 284 yob

16 20.1 -24 34^u

0.046 ± 0.00 yob

10.33 + 1.44 + 1.105 ①

9.19 + 0.75 2

1/2

x

0.72 206, 4P

1900 215 BPA

16 22 36 -46 39.5

BOM 40196

hFT 1271 16 20.8 -46 36 13.9 am

h339-42
-45
O

12123
MS
11 SW

Q is 10
Q is 10
N West
Appt

11.28 +0.7253mg77
11.48 +0.75522.1777
11.85 +0.74 (2)

hgr
2194 -70

x

