

0.55 3410

LP68-344 14 46.2 +68 25 14.6 m

C 234-24 14 46.3 +68 263 15.4 +3 = 1743.8

" LP41-353

-125 -930 GC

GC19890

LF1138

14 440 +16 4/3

+170285

9.27 +126 +119 ①

G-136-13

.067 (15) +449

8.44 +0.53 ②

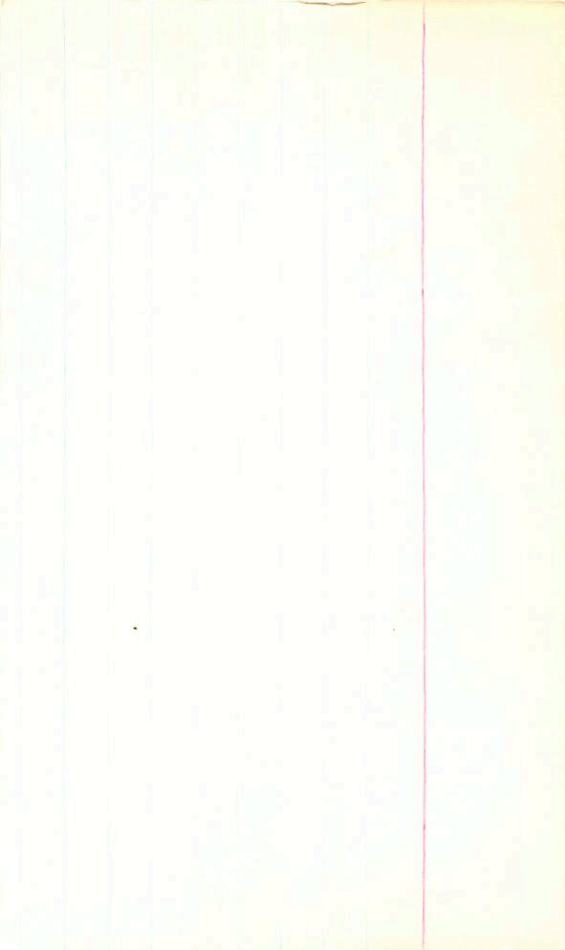
79

-125-922

W

V
V
V

X



1708 E

14 52 25 41 41

G136-27

14 51.2 +11 47 16.6 +3

+107 - 734 skunk

15.29 + 1.82

.051 (503) 4110

(11)

1378

1370

1374

12.35

+1.385 15/10/27
+1.925 22/11/27
+1.405 (2)

X

G136-27



LFT1146

14 48.4 + 46

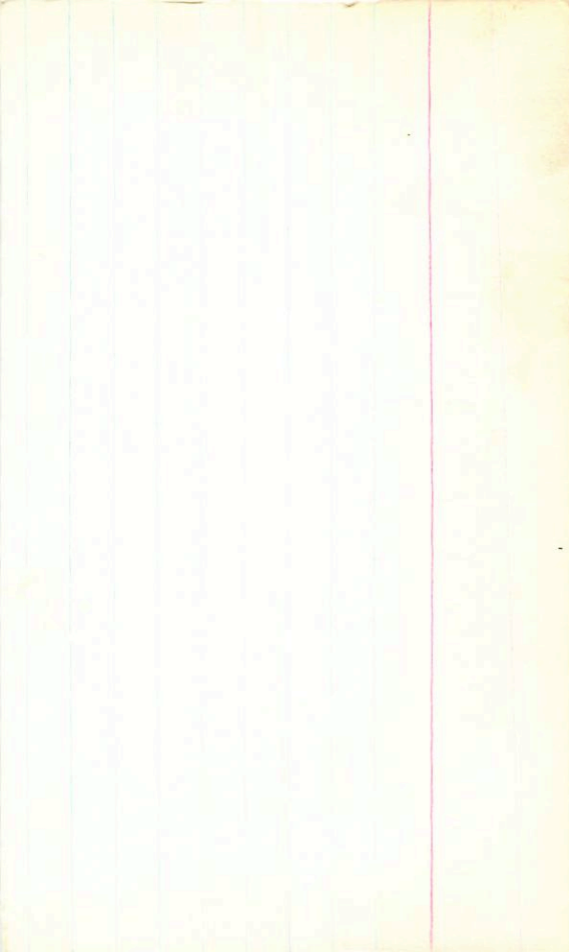
264-32

-807 -441 11

15.47 + 0.07 - 0.67

.007 11 2ND

15.44 + 0.4 - 6.7 skin



124-76 14 48 37 -4 09.5 15.2+2 177

Blank

N

⊙

•

14.6 + 15.1 + 10.9 + 9.1 + 1.1

...

X

13.44

+ 0.59

30 Apr 75
40th St

Road 52

14 52 47 +23 39

173 2806
.75 280 Road

LFT 1155

14 51.7 +23 46

13.7 +2

(2166-53)

Dm 20 1"

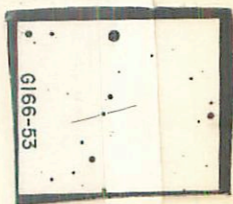
683 + 0.2 MC 916
- 710 A 35
- 696 45

(24) 103

AB

16.45 + 1285 12120
10.31
10.35 + 1.22

m
A
X
4h



G166-53

GC20049

LFT1154

+2802751

G166-52

H0131582

14 51.5 +23 33

040 (25)

8.65 +0.45 +0.71 (2)
8.20 +0.365 (1)

783
21B

x

-835 +20 GC

Grim 7206399

.96 244 G
.92 245 Gmm

LFT1156

14 52.0 +71 52

12.2 105

G229-32

.023 (19)

G174-9

15

0.2

+35

25

16.0 +2

191 126

270 256 2

G224-89 14 59.0 +60 33 15.3 +2

GPR-353

070 158 6

14 56.5 +56 52

16-4-13

G201-27

LP48-344

181 168 C
90 174 R road

R 0001041

LF+1158

14 52.5

43.5 - 46

141 + 2

580-2119

R0201038

187 213 C
.94 207 Row

LFT1181

15

10.1

46

13

G15-13

-468

-700

5.5

1167

8.5

X

12.33 + 0.005 + 0.07 (3)

12.06 + 0.305 (3)

Nov 10 11

105

15 08 06 + 3 16

LFS 1176

15 07 1 + 3 21

177 312 G
20 309 Rows

G15-9

✓

11.46 + 1.50 + 1.09 (2)

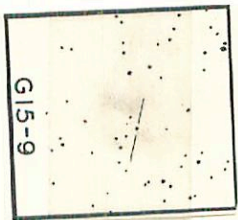
10.23 + 1.04 (7)

10.27 + 1.06 28 May 77

10.25 + 1.05 (2)

9.2

✗



G15-9

BPM 90444

✓ (RF)

15 03 41 +5 44.5

LFT 1168

15 02.4 +5 50

175 231 G-
1724 230 BPM

40286

✓ 9.83 +130 +1.14 5R

615-5

0.558

✓ -5.94 - M
-5.19 - 484 M

9.12

+0.57 13 July 77

9.09

+0.595 8 May 77

9.09

+0.57 13 July 77

M

+

9.10

+0.58 (3)

55



G15-5

BPM 90577

RT

15 14 26 + 19 18

909 172 0P M
89 172 G

LFT 1189

15 13.4 + 19 23

15.1 + 2

L127-15

123-937 IT

13.63 + 126 + 124 ①

G-136-85

✓

VOID 222 NWD

13.28 + 0.54 3 days
13.00 + 0.50 18 days
13.14 + 0.52

X



G136-85

136-85 18 14 29 +19 18 15-1 +2

fly

N

• • •
• • •

1363 +1.26 +1.24 8mg^{36'} 75
1358 +1.25 +1.10 8mg^{36'} 75

883 216 BPM

BPM 59449

LFT 1187

LFT 521

15	13 18	-31	44.5
15	118	-81	39

15.0 h

~~3048~~

✓ MR X

~~2048~~

13.61	+0.625	18 July 77
1360	+0.615	20 July 77
1360	+0.62	(2)

X

Ways 563

LFT 1199

15

19.2

1000

663 245 6

Ways
BPM

663 247

G-151-49

BPM 77809

BPM159716

15 20 42 -27 44.5-

.332

38 BPM

LFT1201

15 19.2 -27 39

14.5 h

W23-54

RV ✓

306M

○

DR

11.90 + 1205 22 Aug 77

11.80 + 1215 13 Aug 77

11.85 + 1.21 ②

11.65

Quartz

Substrate

X

BRM90630

LFT1192

G-1167-32

15 17 26 +31 43

15 16.4 +31 45 159 +1

173 218 Co
1785 217 Opn

C15-24 15 33 26 +2 18 14.3 +1

N

⊙

pure

1340 +1485 +115 1775
40" 5"

ROSS 10

15 27 08 +16 48

1.02 263 G

ROSS
.880 264g DPM

LFT1206

15 26.0 +16 54

146.155

G137-8 ✓

-944 -089 TT

179 +2

.010 (16) UND ✓

26 14 A

STAIN

13.70 +13.6 +1.10

12.58 +0.565 22 July 77

13.03 +0.615 3 Aug 77

13.04 +0.57 18 July 77

13.02 +0.58 (3)

X



G137-8