

661723

LFT591

8 30.9 -81 20

-3106229

1100E +150

6.40 +0.78 +0.29 (2)

6.10 +0.28 (3)

.080 (17)

(By)

-1120 +755 GC

6611328

LF7874

-1202449

.075 (35)

8 16.0 -12 27

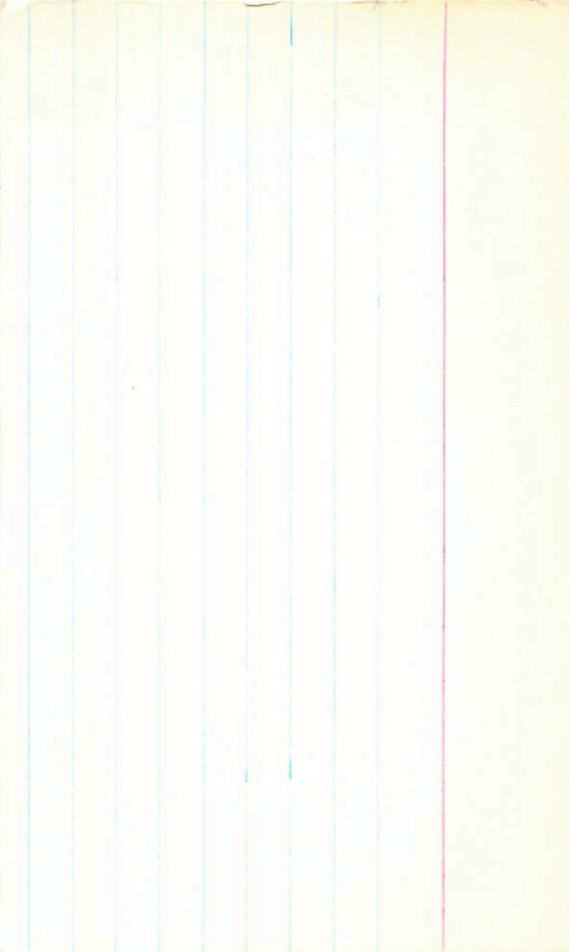
6.00 +0.75 +0.33 (2)

5.63 +0.265 (2)

GTD +30.0

+270 -980 0-6

(121)



Gmw 670552

LF7593

P 31.9 +67 28

-1060 +45 Gmw
-1050 0 11

+670552

dmi +12.5

9.30 +1.42 +1.23 ①

8.29 +0.71 ①

Acta .670 ①6
Bm

23yo

G2347A

130

Luynes

LF-T 592

L-1866-6

G-234-37

-845 -570 buy
-855 -625 G

8 31.2 +68 15 13.4 +2

135

BPM 51549

LFT600

8 39.6 -32 48

-1040 +1330 BPM
-1060 +1325 π

-32056B

b A 0:

11.90 +0.25 -0.59 (2)

12.09 +0.04 (3)

.108 (17)

(137)

G-612268/9

LFT 612

AB -1350 -370 GL
-1330 -345 FL

8 50.7 470 59

+710482

AD 8.04 +1.39 +1.25 ②

MSI +47.4

7.17 +0.62 ③

SMND

4" 1.685 ⑤

G-55-24

AD 5204'

129

~~Cart~~

623
Rosa #63

hFT616

9 52.6 +1

+115 -1095 Rosa
+70 -1025
+70 -1030 ~~4~~
45

t20 2098

9.99 +135 +121 (3)

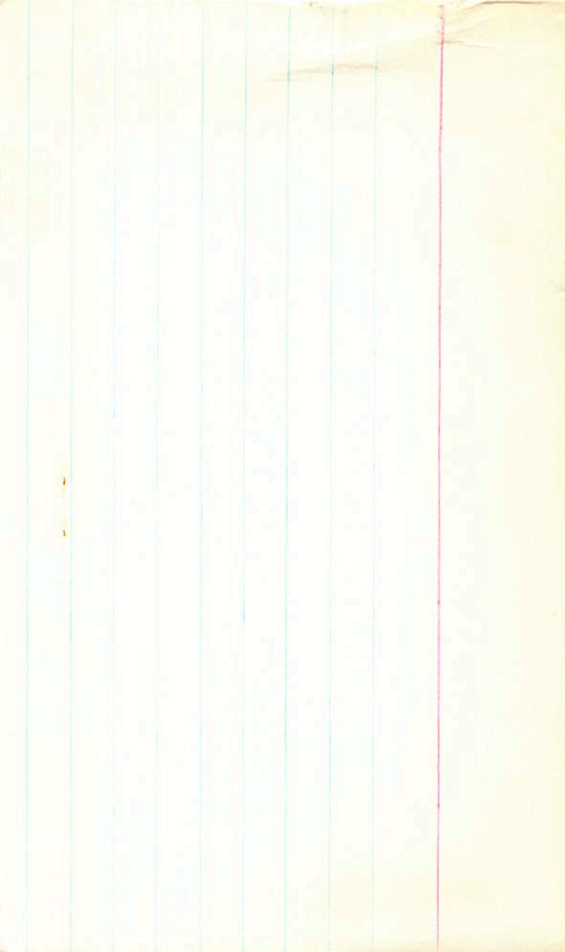
Cy6-9

9.05 +0.675 (3)

dm0 0.

1059 (81)

125



BPM 51927

LFT 625

8 57.0 -31 02

L532-21

13.80 + 1.645 + 1.20 (2)

16" 6"

+50;

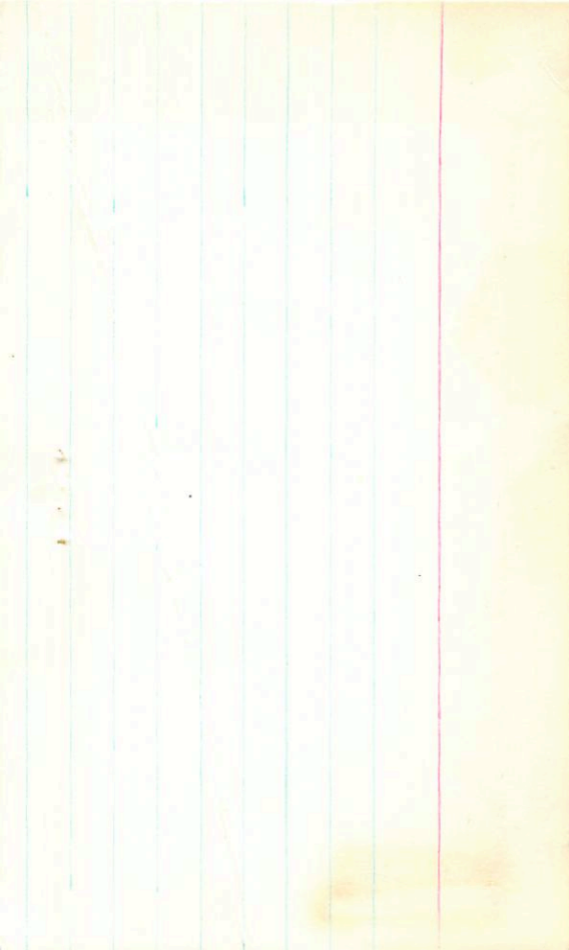
12.29 + 1.29 (1)

16.28 + 0.50 + 0.37 2

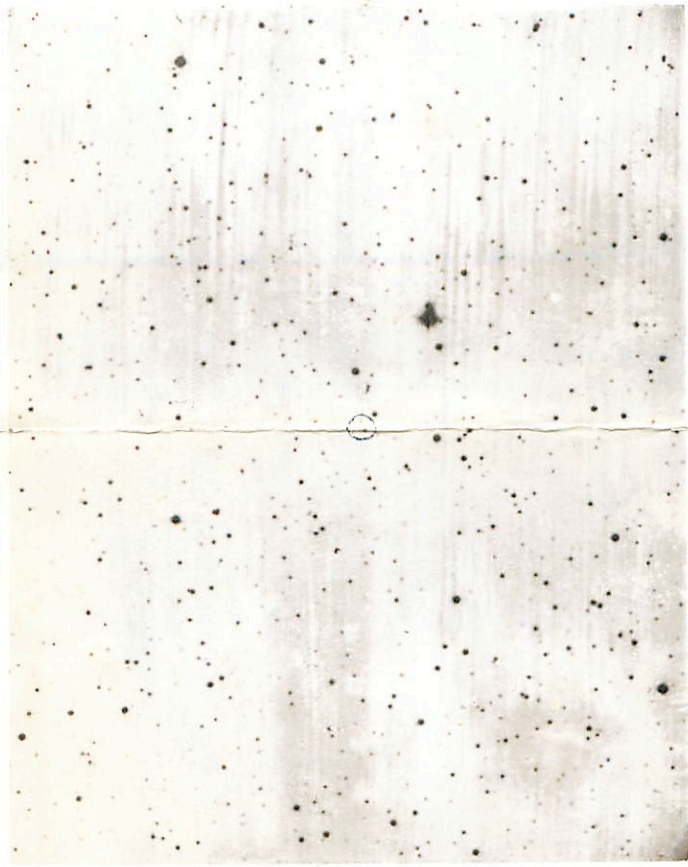
again

140

7645-830 RPM



N
↑



Fainter star next
LF star.

(1971.0)

8h 57.9 -31° 06'

← E

25



-250-11856-

C-194-50 8 57.4 +48 35 15.8 +2

140

G-195-19 9 12.5

+53 39

-1045 -1160 G

-1080 -1130 track II

DL 13.79 +0.30 -0.66 (2)

0.96 ± 5

(143)

GMW 77361

-1160 -20
-1060 -20
-1065 0

LFT 636

9 11.8 777 28

+770361

10.06 + 1.385 + 1.225 (2)

G 252-30
 $\delta m = 0$

9.17 + 0.62 (2)

AD

0.40 (45)

-4i

15.34%

145

$\log \frac{m_1 - m_2}{m_1 + m_2} = -0.31$

GL12727K

LF1634

9 11.0 + 52 54

-1570 - 540 GC A
-1545 - 680 GC B
-1555 - 630 TT AB

+530B20

GIS5-1115

MOD +110

7.64 + 1.41 + 1.22 (2)

6.75 + 0.685 (2)

161 (69)

MOD +10.2

7.67 + 1.42 + 1.25 (2)

6.80 + 0.69 (2)

(147)

+290-1135 G

G-46-34 9 18.4 +3 36

13.34 +1.72 +1.88 ①

12.01 +1.095 ②

146

1 Inner?

LFT640

9 17.5 -77 37

L35-12

13.10 + 1.64 + 1.15 ①

0: 11.40 + 1.39 ②

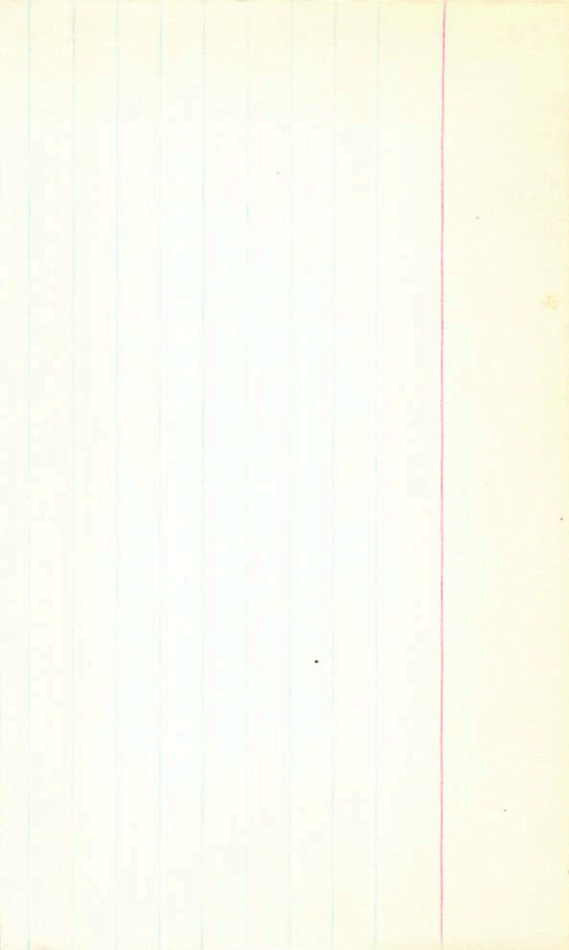
144

+695-770 kg

G195-22 9 140 +58 39 16.343

LP90-34

0 -12206
0 -1110LP



+195 +1235 BPM
+165 +1245
11

LF7650 9 25.9 -80 21

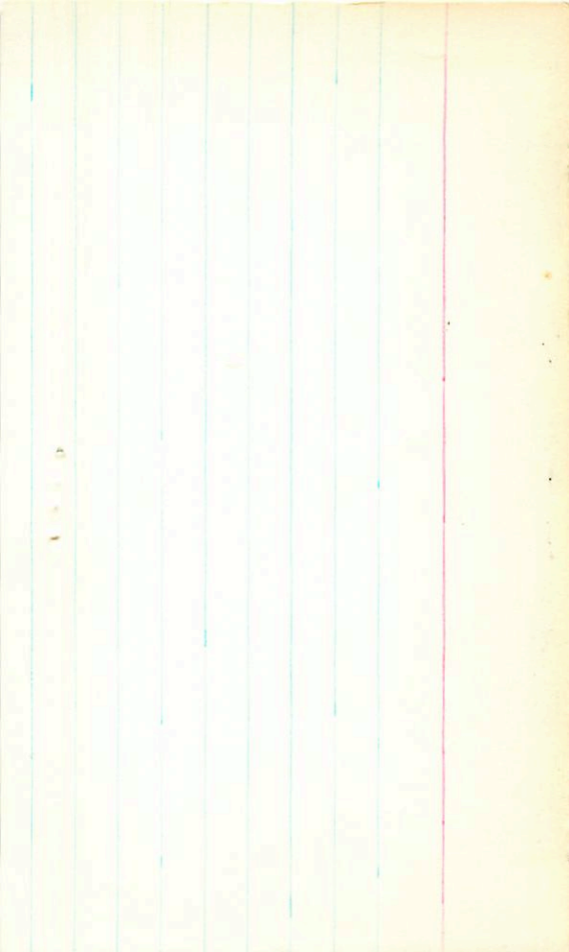
-800325

-92; and G-

1009 +0.585 -216 (2)

.052 (5)

Ch1



NET 650

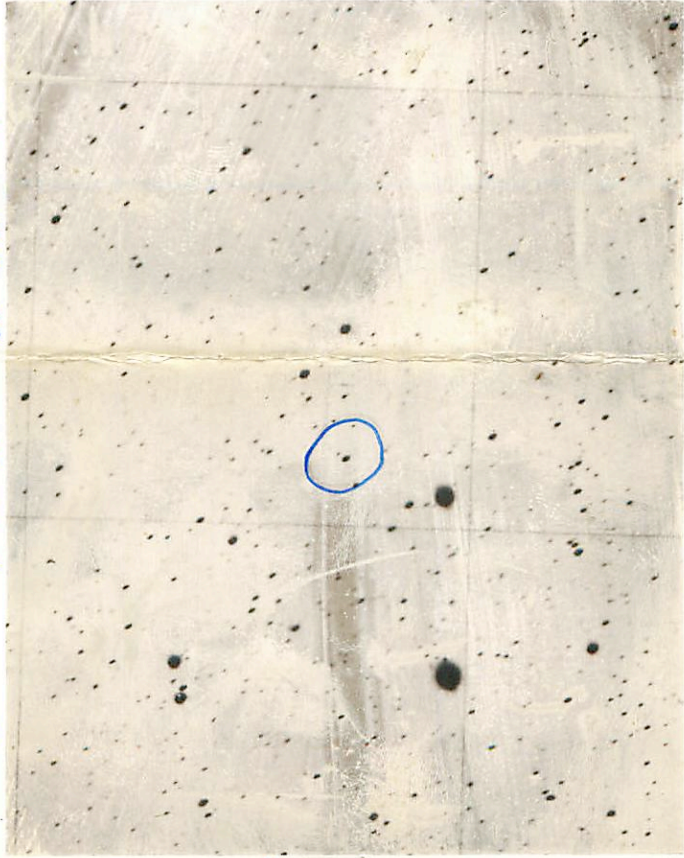
9h 25.2

-80° 25'

1971.0



Franklin Delano
←→



PEEL

PEEL

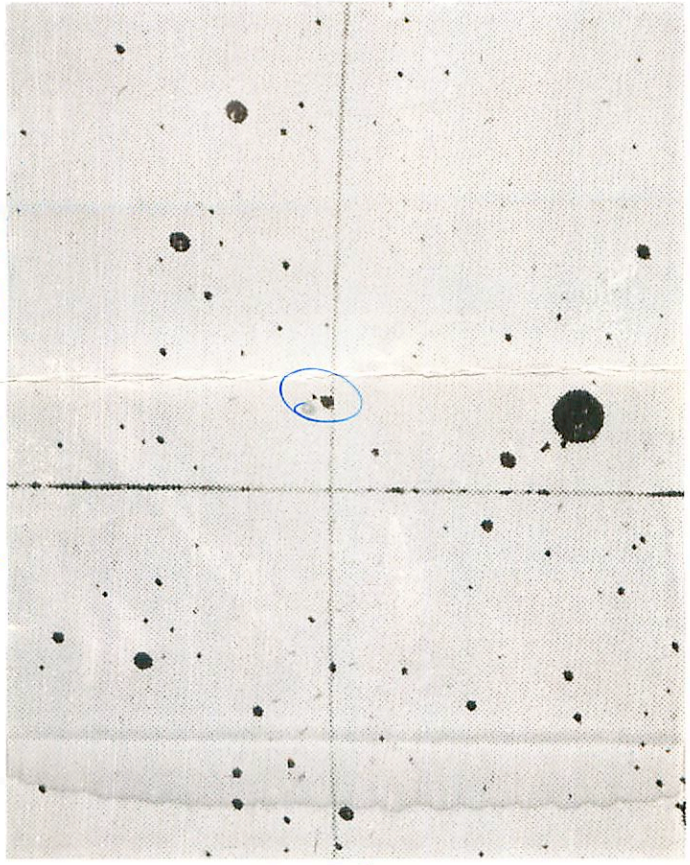
LFT 680

9h 25.2

-80 25

1971.0

W 259



43

PEEL

PEEL