

#1370 #525 BPM

BPM 476B

LFT 208 2 16.9 -37 01

L 440-30

11.62 + 1.50 + 1.17 ①

10.42 + 1.01 ②

Not
M
M
M

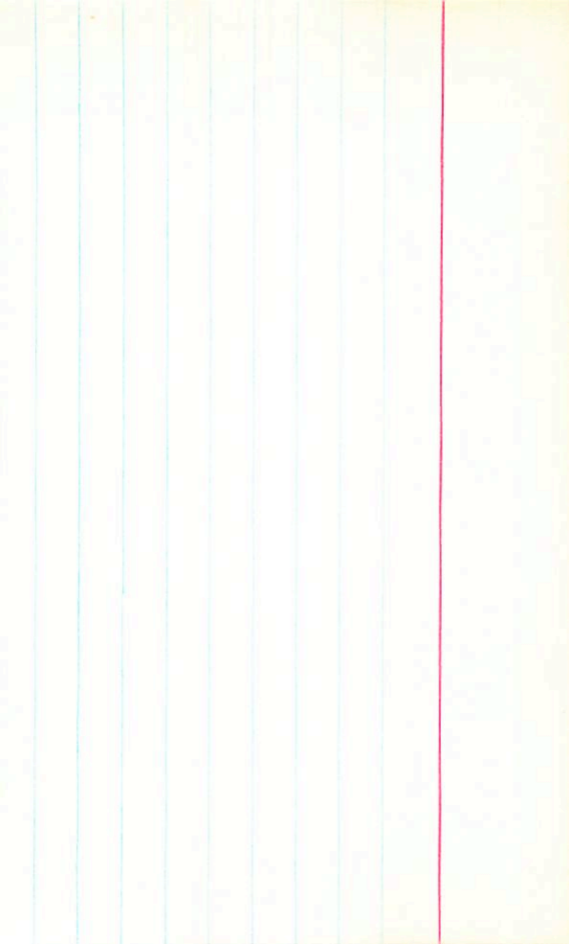
+47.

.160

9.3
+ 1.0

10.3

Amichant



Sp. B 10 d +1155 -240 GC

Sp. B 10 d

STAD

LFT198

2 14.0 +34 00

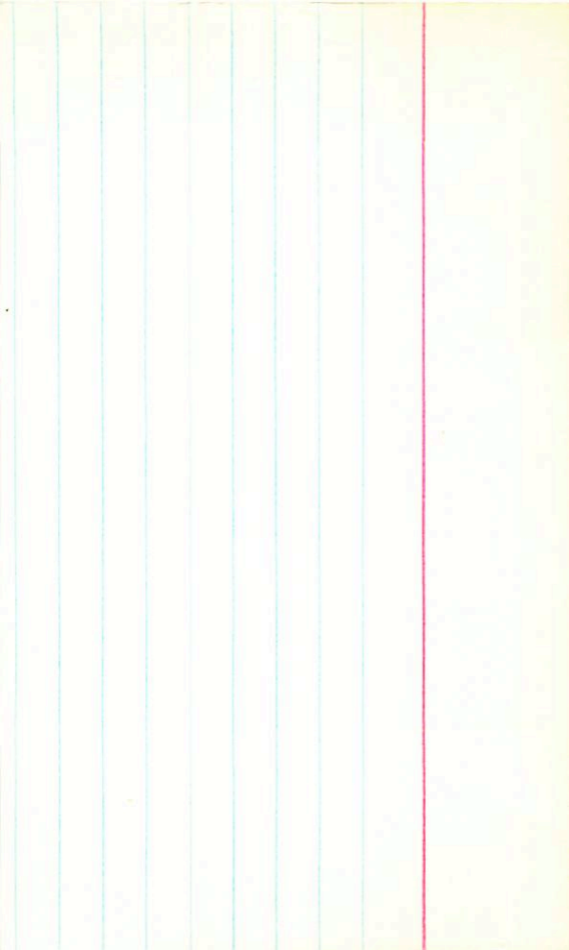
50

4.95 +0.61 +0.01 ③

.094 58

GOE -6.4

4.60 +0.24 ⑤



6-63121

(54)

A +1805 +1460 GC
B +1820 +1465 T

1-FT217/9

2 33.5 +6 39

+10399

5.72 +0.57 +0.80

VM

NSD 1324

(split)
5.33 +0.365

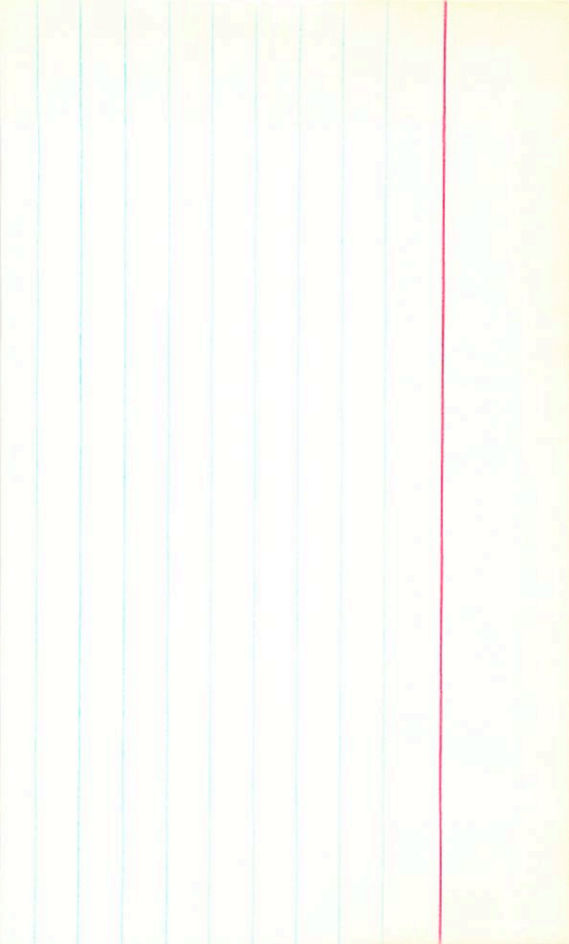
6-73-7171

(60) 138

dmb

5014 2911 + 17.11

(55)
54214 22.01



BPM 47783

+505 -1050 BPM

LFT 221

2

37.7

-34

19

14.6 m

L-513-23

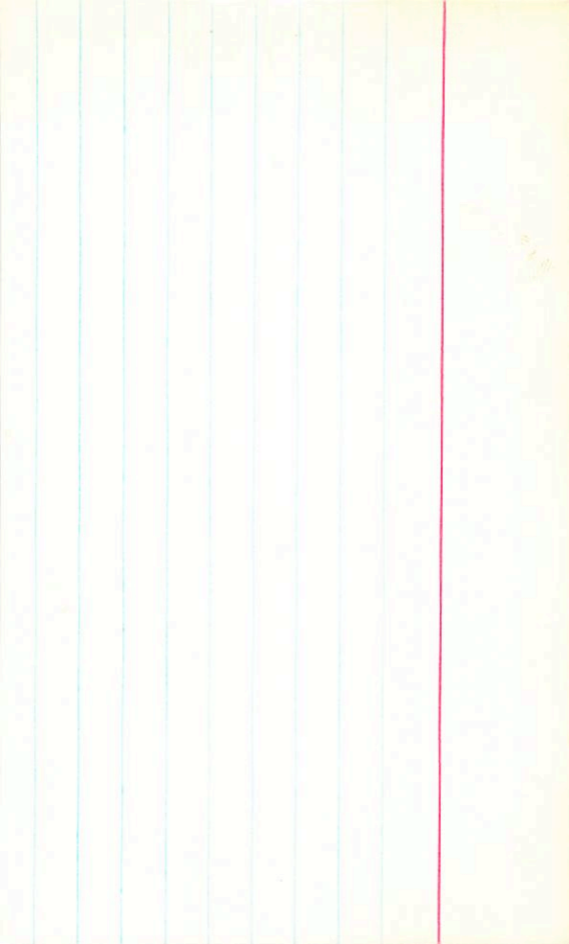
(53)

11.75 + 1.52 + 109 (1)

10.56 + 1.035 (2)

-70;

handwritten



2 3243 +17 40.5

7665-5617

G-4-29

✓

2 31.4 +17 33

1490+1.68+96

Jeffrey Ward

RF

52

1026 (15) 1100

13.85 +0.99 23.8477

1381 +0.96 25.77

1383 +0.975 2

G4-29



+1335 - 485 G
+1370 - 470 LP
+1399 - 509 stand
+1395 - 509 stand
214 15.9 + 3

2 5125 + 150

2 50.1

~~59~~ ✓

G-75-47

(5) und

1

0172606

1.

~~189~~

144 15.8 m

0.32 tick

1473 + 1.54 stand

(5)

13.63

+0.72 13.8576

1370

+0.74523677

1366

1366
+0.735(2)



G75-47

BPM 2779

LFT 237

2

51.1 - 63

55

1.116

+965 +600 BPM
+925 +625 layer

H127-57

-024

11.37 + 1.54 + 1.20 (1)

444:

10.03 + 1.05 (2)

077 (6)

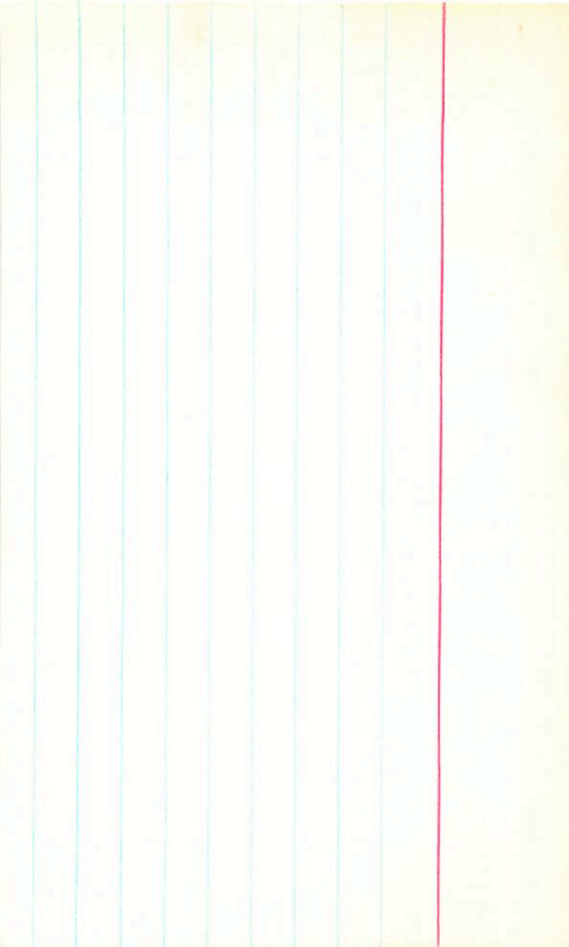
4.0

4.35

(5)

(11)

beam about



Wald 1823

LF+234

+330524

G37.5

2	50	30	+34	18
---	----	----	-----	----

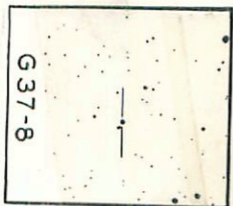
2 44.0 +34 17

56

1.39 186°C
1.38 105°W

10.8 186

G 37-8



Rosa 751

LFT 242

G5-7 ✓

Again ✓

AMS +45.0

+1875 -365 1000

+1785 -345 2

+1740 -410 11

~~1214 - 1441~~

040 (15)

024 1005-21450

(55) 1005-21450

5 ✓ (5) ✓

2 5600 +1042

2 54.7 +1036

1.82 1010 G
1.91 1010 N 1000

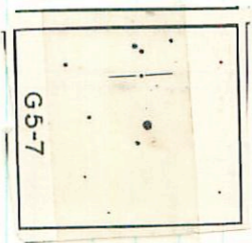
127 115

15.0 +2

11.81 +1.105 1300006

11.72 +1.105 2700076

11.76 +1.105



G5-7

BPM 78087

LFT263

3

10.4

-38

17

1445

+1215 +730 BPM
+1260 +725 TT

-3801058

11.51 +1.51 +1.22 ①

133

+48:

10.42 +0.60 ②

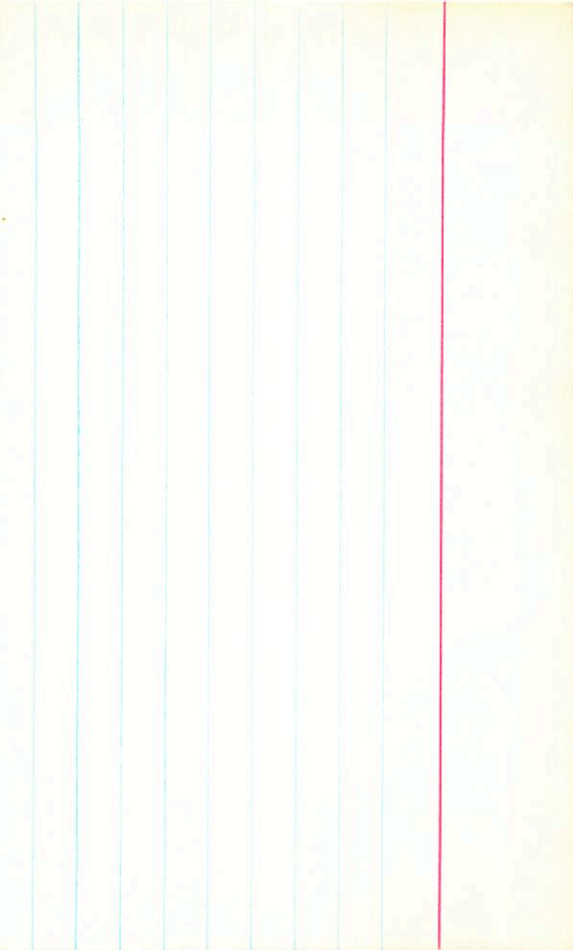
.070 ⑩

9.5

UB

NO

Monument



GL 3740
L.P.A.

+1265 -80 C-C

LPT256

3 05.7 +49 25

HR437

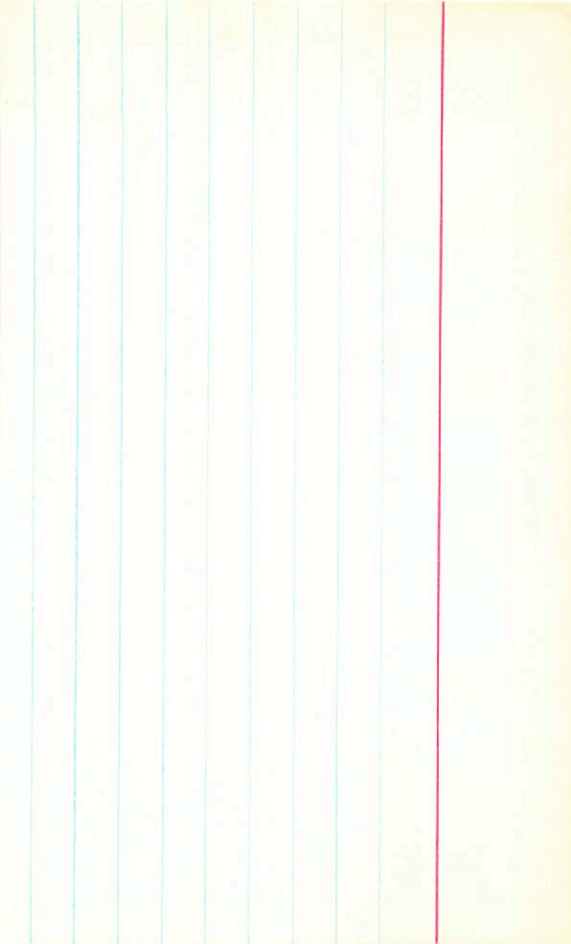
G4Y

405 +0.60 +0.11

slit

3.85 +0.195

62



Way 1324
LFT 1324 266

66
3

+555 -1240 way
+205 -1005 G
+240 -1050 T
56

13.2 +87

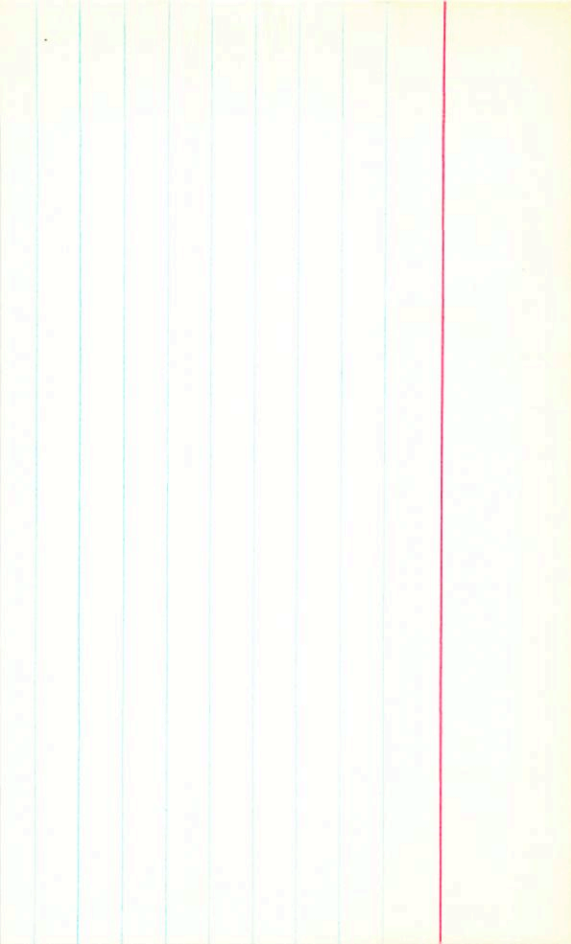
G-78-26

106.9 +0.97 +0.52 ③

adms -166.0

990 +0.52 ①

.027 ③①



G-77-31

3 10.7 +4

+1675 +115 G
+1735 +105 TT
35⁺¹²⁴⁷ +102 TT

.117 (15)
109 \$/h

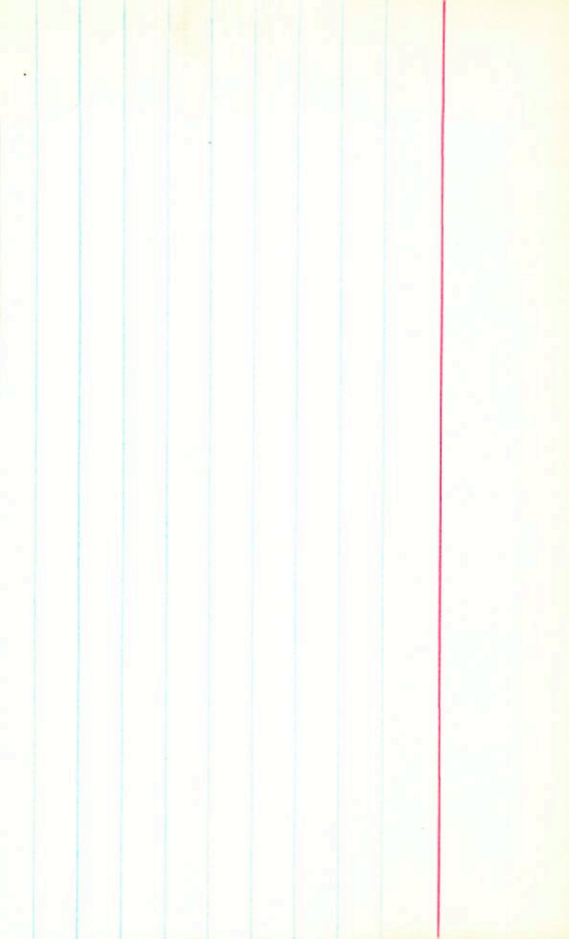
64

13.90 +1.82 +1.15 (1)

12.18 +1.41 (2)

12.07 +1.48

W h n s



waf 134
LFT 262

(US)

3 10.5

+18

39

+1285 -1090 waf
+1155 -1005 f
+1285 -1020 FT

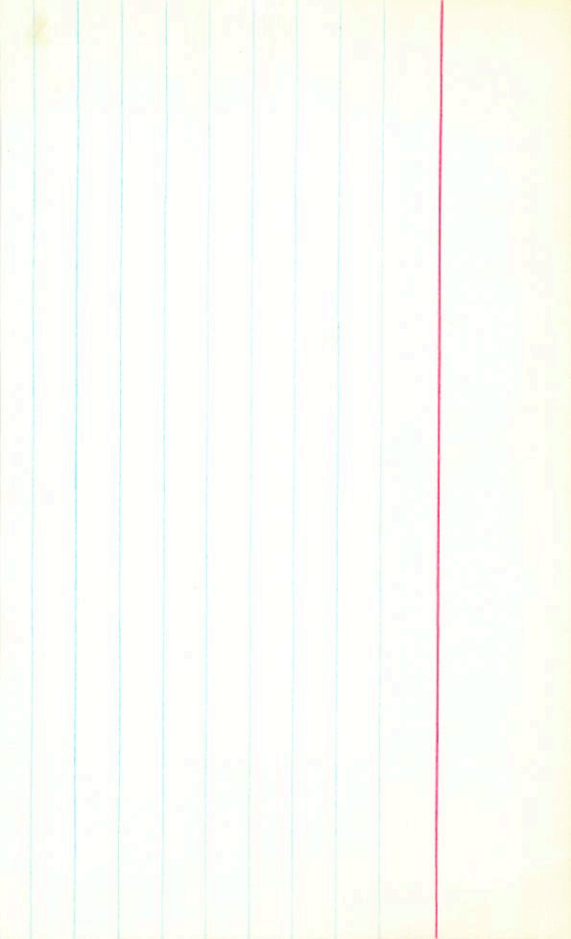
6-5-22

14.29 + 1.76 + 1.26 (2)

Adm 10 - 102.0

.038 (19)

13.36 + 0.565 (2)



merged
Nov 29

LF+277

-4301024

① 251

① 8

3 17.9 -43 16

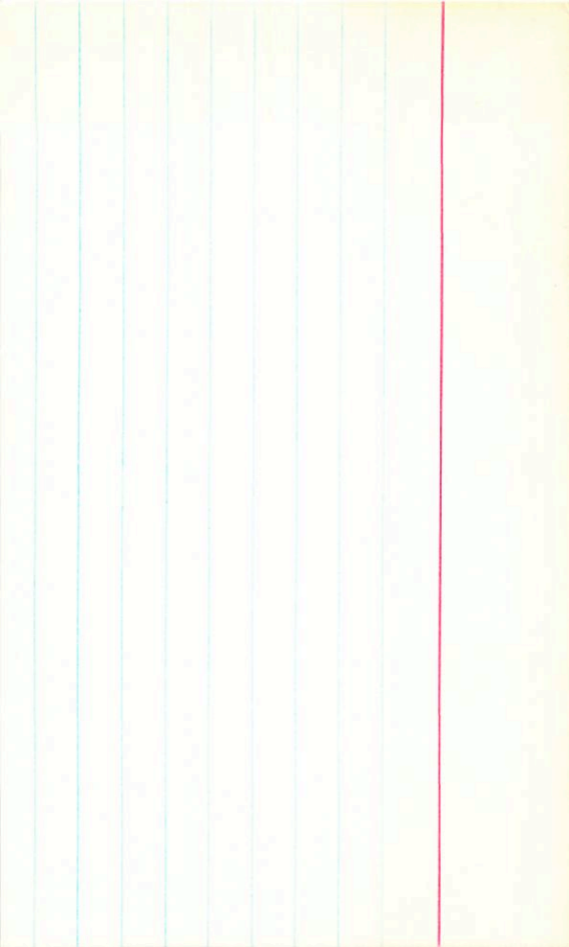
+3055 + 745 - 66

4.26 + 0.71 + 0.21

CSE + 96.8

① 507

3.98 + 0.275



GC 3966178

(67)

A +1330 +660 GC
B +1330 +665 GC

LFT 275/6

3 16.7 -62 46

3 17.1 -62 42

1084 (20)

1083 (17)

G2F +12.0

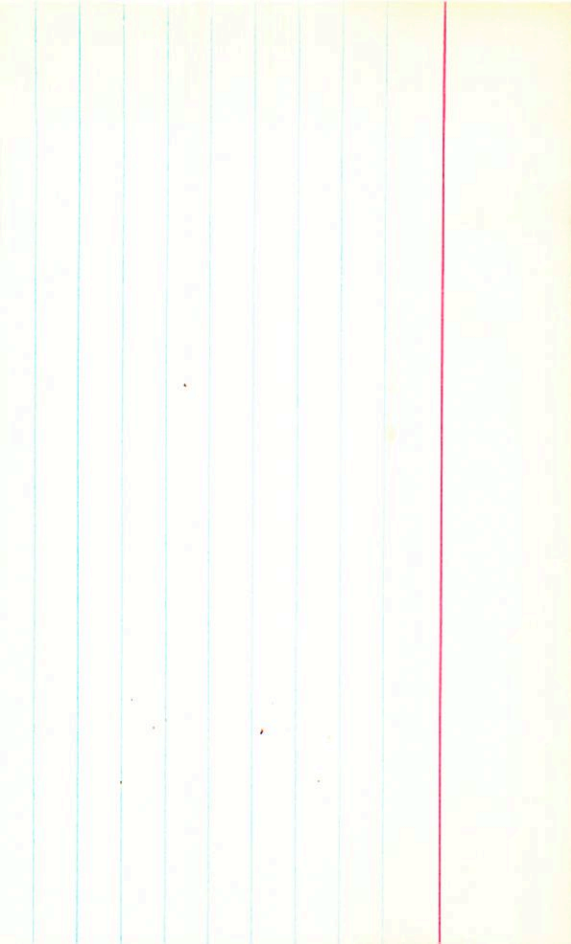
5.44 +0.65 +0.55 (2)

5.29 +0.225 (2)

G1F +11.5

5.23 +0.61 8.00 (2)

5.04 +0.22 (2)



wolf 1325

.71 140 G③

LFT 271

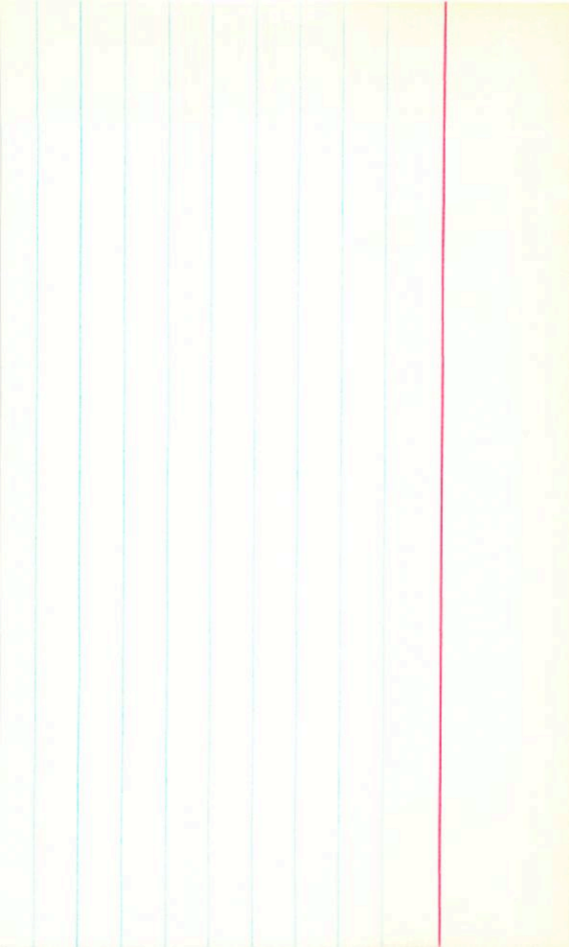
3 14.9 +38 05

+370748

10.28 + 1.475 + 1.20 ②

G 78-31

9.22 + 0.86 ②



Cin 20-236

LFT 285

+660269

G246-38

sol 68 -159.0

21 200-

(1)

3

26.6

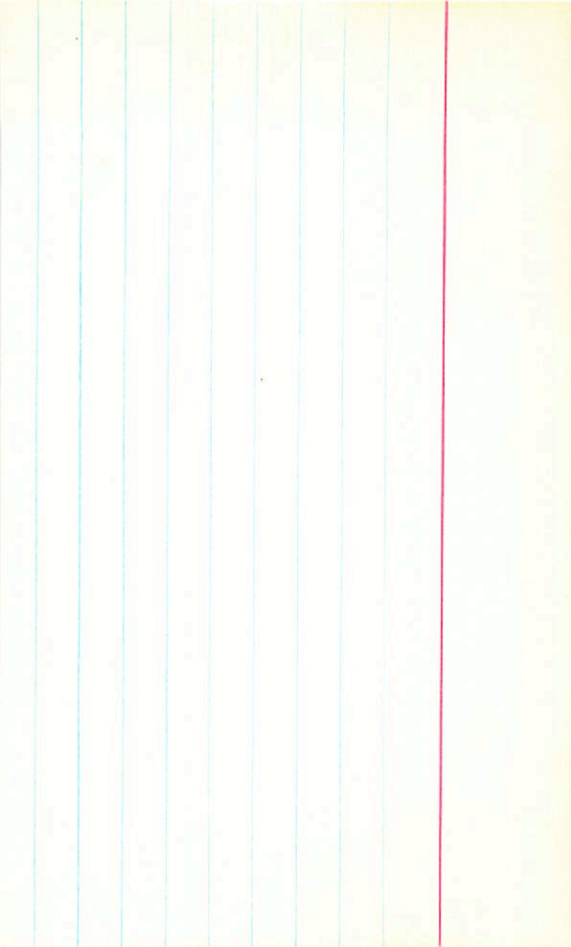
+66

34

+1190 -1000 Cin

+1190 -1035 Gmm

9.90 +0.66 -0.09 (2)



R00034

LFT283

G29-1

(69)

+1115 -1115 R000
+1125 -1050 G

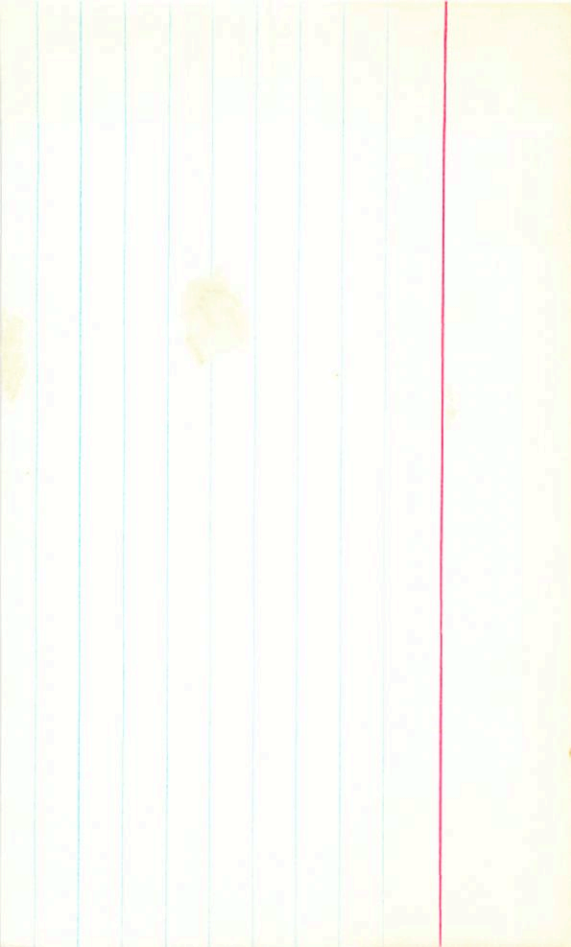
3 25.6 +37 13

11.12 +1.31 +1.06 (2)

10.22 +0.60 (1)

AdNS-1720

(Ac) 910.



R000578
LFT20F

②

G37-40

3 29 08 +33 57

3 27.6 +33

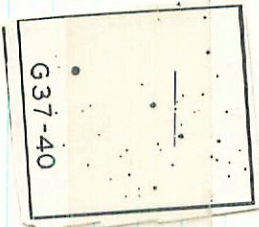
52

171 114

+410 -1350 R0000
+580 -1455 G

④ 013

G 37-40



Wref 1057

LFT 303

3 41 02 +12 28

3 397 +12 23

+610-1305 Wref
+760-1375 G-

G79-59
hl

RF XX

12.90 + 1.55 + 123 ①

Aggie

~~NO 1317 + 0.57 76~~

11.88 + 0.84 3 11.77
11.82 + 0.88 2.5 11.77
11.95 70.86 ②

· G79-59



Roads-X
LFT298

3 358 71 37

6160-5

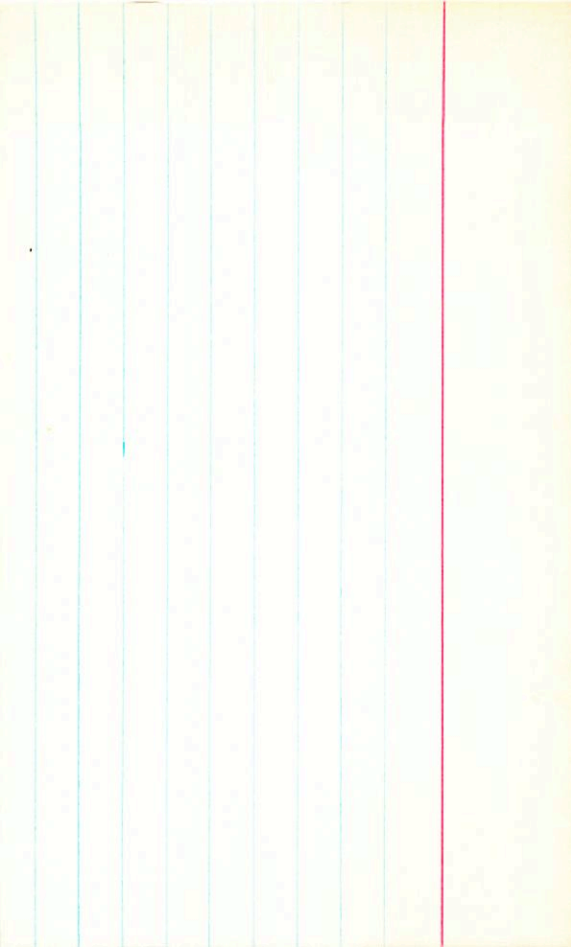
(73)

1305+1.605+1.385 (2)

11.95+0.855 (2)

0.033 (5) -140;

+1435 -2700 Road
+1435 -2700 G
+1455 - 11



Wolf 219

LFT306

3

41.7

+18

18

+530 -1130 Wolf

+385 -1150 G

401 -1125 II

G6-30

15.20 +0.30 -0.52 ①

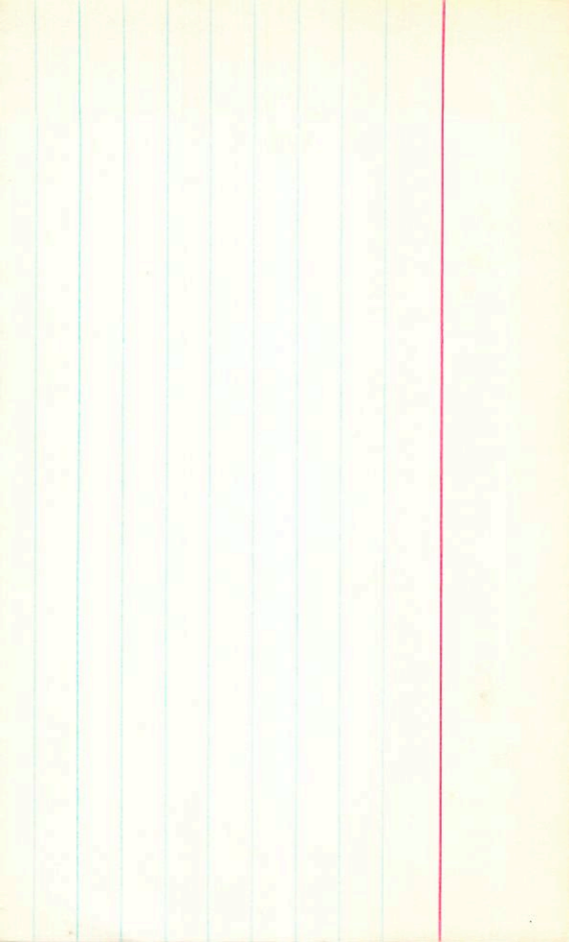
24670

14.68 +0.13 ②

WLG ⑧ W
050 to 200

16.6
54

059 ②4



BPM49476

LFT320

-370/501

.049 (15)

(77)

3 57.5 -37 11

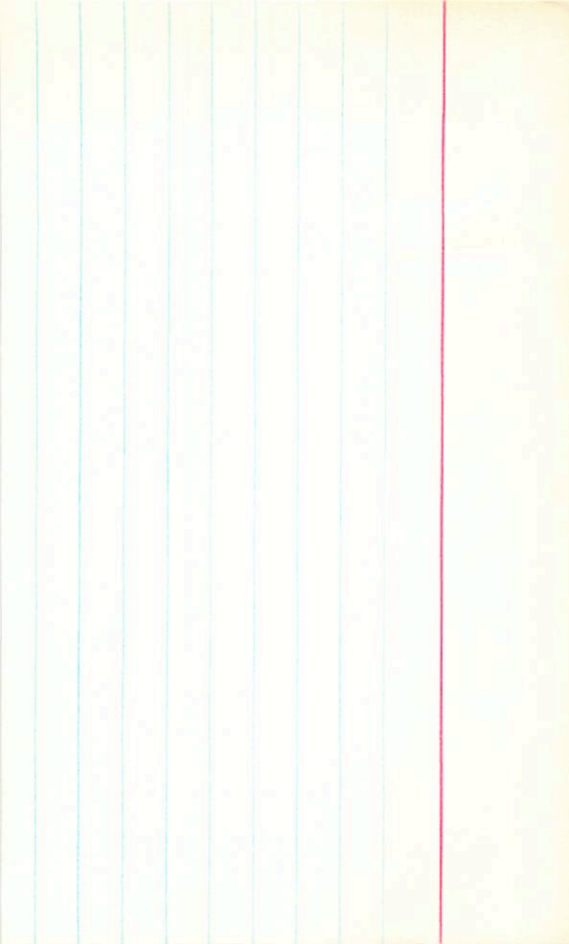
12.15 + 142 + 101 (5)

+28.0

10.96 + 0.53 (2)

branch

-370 -1080 BPM
-410 -1115 //



C-160-28

3

48.3

-6

14

148 + 3

1.41 155 8

(96)

12.74 + 1.71 + 1.40 ①

11.24 + 1.16 ②

GC4519

LF7307/9

+410750

A062759

G-95-59

A +595-1235 0-0

B +389-1280 2ish

C +395-1375- π 4h

345-1075 5h

3 43.6 +41

8.15 +0.78 +0.20 (4)

8.76 +0.90 +0.44 (4)

N1E +49.6

N2E +54.1

.040 (40)

.046 4h

13.90 +1.57 +1.88;

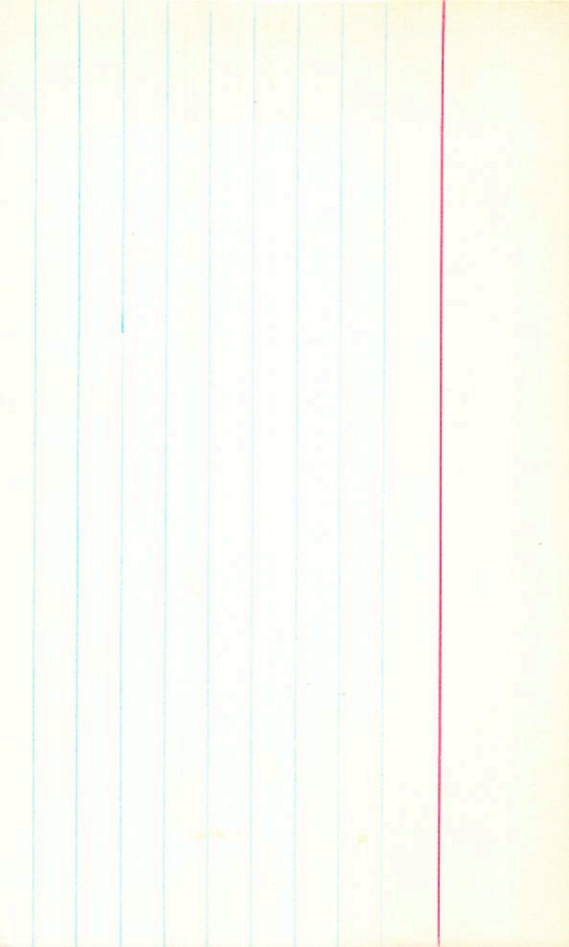
12.54: +0.70;

.023 (10) 4h

0.30 2005 hsh

0.19 (19) Shm

See RA J 179, 965
AJ 78, 253



C160-42

401.2

-5

16

16.1 + 3

—

1.25 1706
1.135 1674P

total

LE 654-13

14.3 15.5m

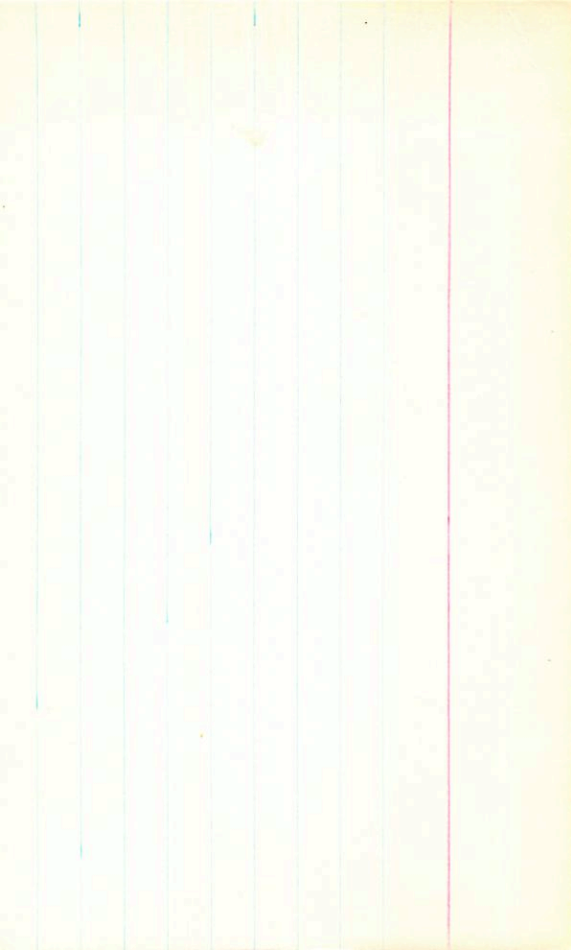
14.8: +14.5! —

(3)

13.79 + 0.78

(2)

(79)



+670-960 P000
+710-815 G
+660-800 J

4 64 40 +32 54

4 03.0 +32 50

10.00 +0.58 +0.70 ①

DN4 +112.0

80

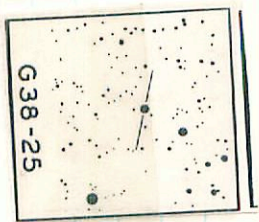
P000 591

LF+329

+320 719

G38-25

1-029 2-1



G-C 4849

(9)

+1745-1350 G-C

LF T326

3

59.9 +35 09

+340796

8.50 +0.88 +0.36 (2)

N1E-300

805 +0.36 (1)

(50) 1052

