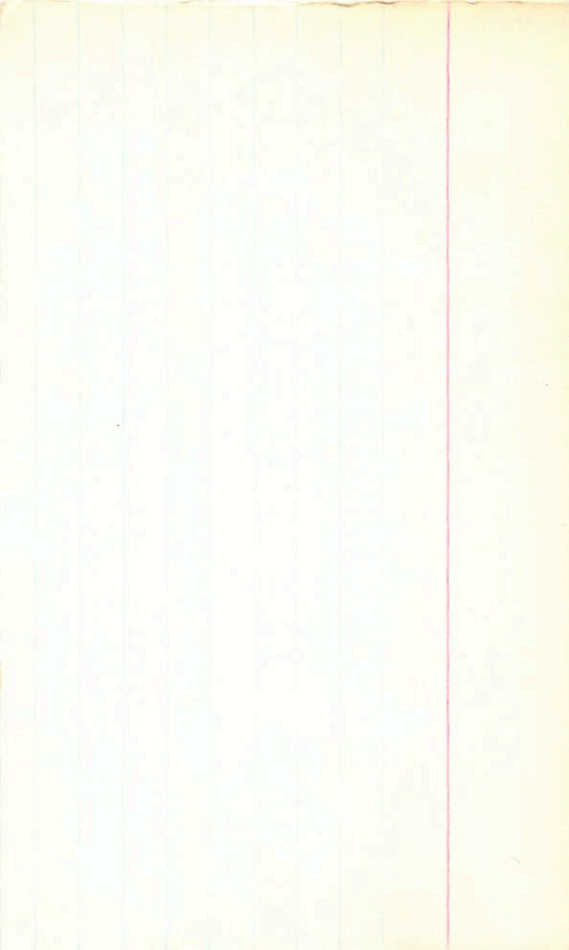


179 159

6-237-38      11 57.1 + 6.2 46 16.3 + 3

6-264-405



G-254-35

12 08.6 +77 32

15.4 x3

LP20-200

172 240 6



BPM55765

LFT877

L469-72

(17)

(1)

2509

(+)

PMH X

1702 10888

12 03 40 -38 09

12 02.0 -37 59 13.4h

10.76 +0.82 21m576

10.74 +0.824 9pm87

10.76 +0.825

APM

Woy/106

RI

~~12 07 07 - 00 20.5~~

LF 1981

12 05.9 - 00

12

91 265.5  
94 266  
96 - 260  
BPM

G11-40

QPM 87985

-937  
-912

-0816  
W

11.26 + 1.42 + 1.17

10.33 + 0.70

0.60 (14)

2795

-925

-90

135

131

+

v  
c



G11-40

LFT 881

0.85

12 05.9 -00 17

12.2 MO

w 406

G11-40 40(14)

10.31

+0.705

30 Apr 75

40" C15

10.25

+0.775

30 Apr 69

10.36

+0.695

30 Apr 69

10.33

+0.775

9.92

895

784

5 May 69

11.29

+1.41

+1.17

C15 40"

1 May 75

11.24

+1.43

+1.17



$\rightarrow 12 \ 08 \ 54 \ -14 \ 55 \ \leftarrow 0.22$   
 $734-32 \quad 12 \ 07.6 \ -14 \ 47 \ 11.7 \ 13.3 \ \text{am}$

✓  
 boy

$10.654 + 1.344$   
 $10.61 + 1.24 \ 26.42$   
 $10.62 + 1.24$

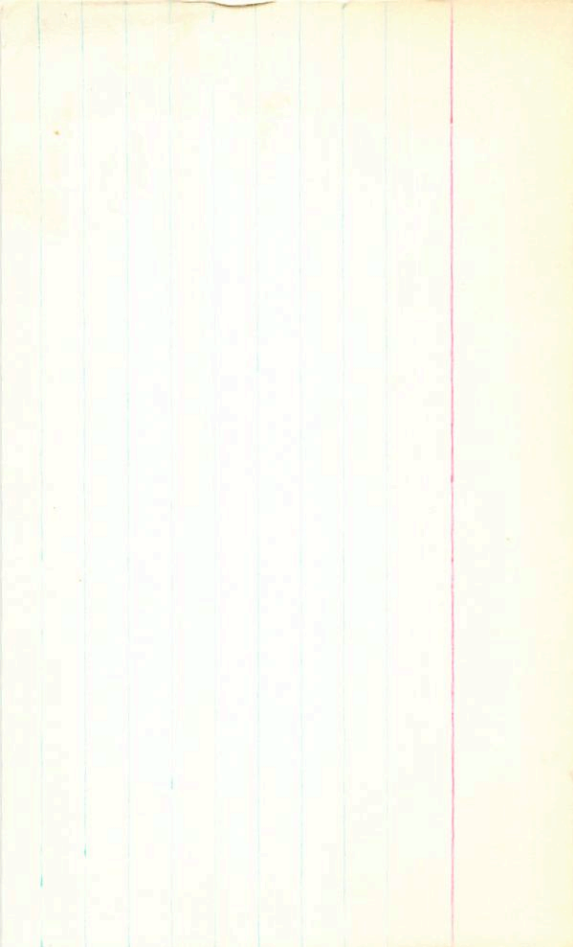
$\times$   
 $17 \text{ May } 75$   
 $40^{11} \text{ CT}$   
 $12-11$   
 $12.00$   
 $12.06$   
 $12.11$   
 $12.14$   
 $12.15$   
 $12.17$   
 $12.18$   
 $12.19$   
 $12.20$   
 $12.21$   
 $12.22$   
 $12.23$   
 $12.24$   
 $12.25$   
 $12.26$   
 $12.27$   
 $12.28$   
 $12.29$   
 $12.30$   
 $12.31$   
 $12.32$   
 $12.33$   
 $12.34$   
 $12.35$   
 $12.36$   
 $12.37$   
 $12.38$   
 $12.39$   
 $12.40$   
 $12.41$   
 $12.42$   
 $12.43$   
 $12.44$   
 $12.45$   
 $12.46$   
 $12.47$   
 $12.48$   
 $12.49$   
 $12.50$   
 $12.51$   
 $12.52$   
 $12.53$   
 $12.54$   
 $12.55$   
 $12.56$   
 $12.57$   
 $12.58$   
 $12.59$   
 $12.60$

0.72 1834P

L P 734-32    12 07.6    -14    47    11.7    13.3 am

② 60.1 + 85.1 + 99.1

② 10.62 + 1.24



10.77 + 16.45  
12.97

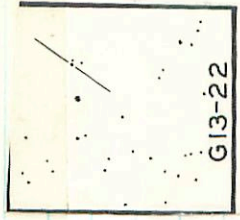
G-13-22 12 12 45 100 47 15.49 + 4

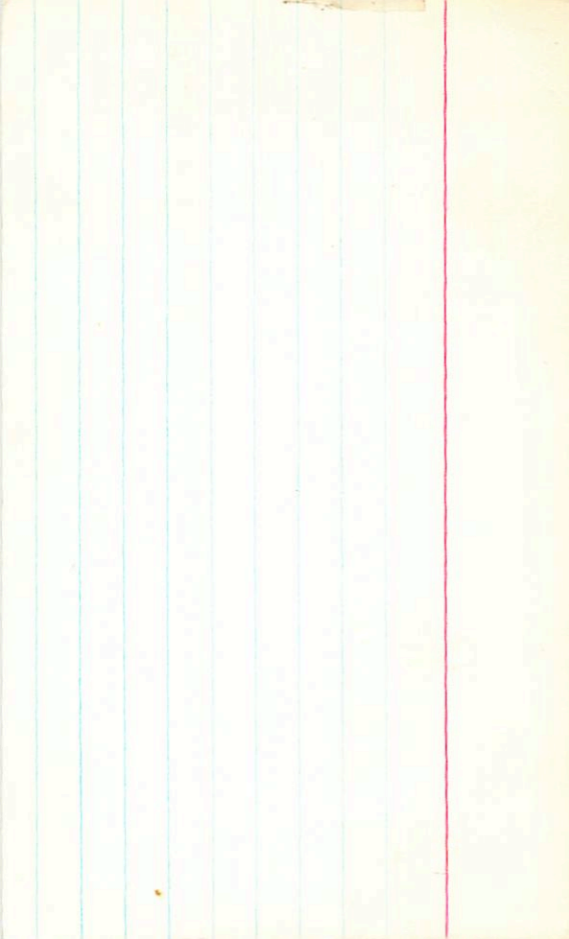
(110) (113)

13.58 + 1.855 + 103 12.7275

11.79 + 1.50 26.4975 40" 01  
11.73 + 1.49 30.4975 40" 01  
11.76 + 1.495

10.77 + 1.645 ? 15 Apr 74





-945 -255 6

G13-22

12 118 +00 54

13.42 +1.59 +100

13.42 +1.79 +1.00 48km

13.58 +1.85 +103 (1)

11.76 +1.495 (2)

~~11.77~~

-935 -285 stems

.114 101 WNO

121 ± 0.05 lish

117 (30)

x

11.38

1.52

9.46

9.28

9.74

(10.75)

way 1439

LF 590

G 84-9

12	14	31	+21	31
----	----	----	-----	----

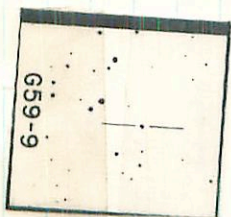
12 10.2 +21 88

15.2 +2

.77 268 G  
.88 275 way

12.51 +0.91 127.27

+





way 409

LF-1899

12	21 04	+25	19
RD	19.4	+25	27

RT

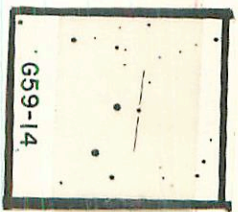
172 2558

659-14

11.35 + 1.35 + 1.14 510

10.64 + 0.55 1070

4



G59-14

BPM 98076

WAV  
RI

12 15 25 +3 05

12 14.3 +3 15

1.70 296 G  
.703 292 BPM  
.72 289 LP

89/12

GB-26

1.225 +1.24

L1046-18

11/19 311

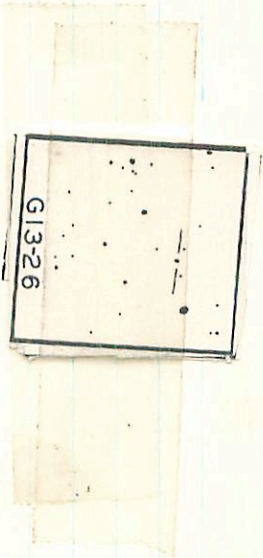
14.6-14.7

a m

A 12.00 +1.14) 27  
3 my

✓

G13-26



BPM 98 144

RT

12 20 32 +6 52.5

LFT 997

12 19.3 +7 01 15.6+3

173 1776  
1737 171 0 PM

G12-35

17.20 +1.55 - ①

1337 10.58 127m TL

+

G12-35



6631178

+420 -670 66

22 16 36 - 53 46

LFT1702

22 15.0 - 53 53

5.9 57

-549222

per  
10.5

5.36 + 61

10.5 28

485

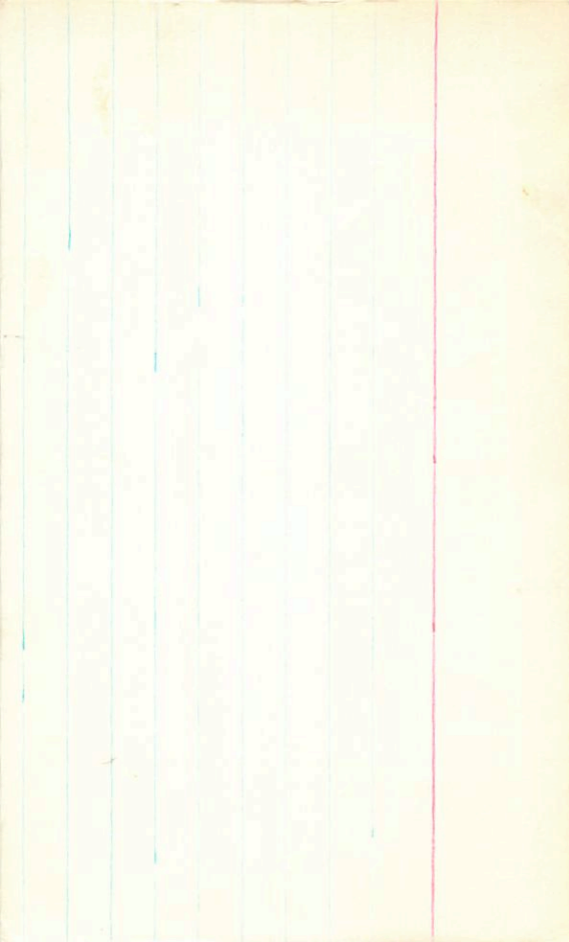
SECRET 50.5

1052021

~~541-198-552-148~~ 485

5111111111

X





BPM 36887

LFT901

L32661

12 20.5 -46 21

-1051

-330

065

+42

13.63 + 1.60 + 1.04 ①

12.14 + 1.205 ②

X

246.88<sup>4</sup>  
754

6-12-35

12

20

32

46

52

156 + 3

. 73

N

W

1420 + 1555 - 6 days  
36 r

R000690

LFT903

G237-63

174 3016-

173 3050000

12 207 +64 / 5

12.6.114

12.6.113

750+245-66

661682

LF7902

12 20.5 -67 21

-6601212

HP107722

6.36 + 0.895 + 0.465 (2)

HPV.2

HP4710

5.94 + 0.33 (1)

010 (2)

x



LFT901

12

21

32

-46

28

15.2079

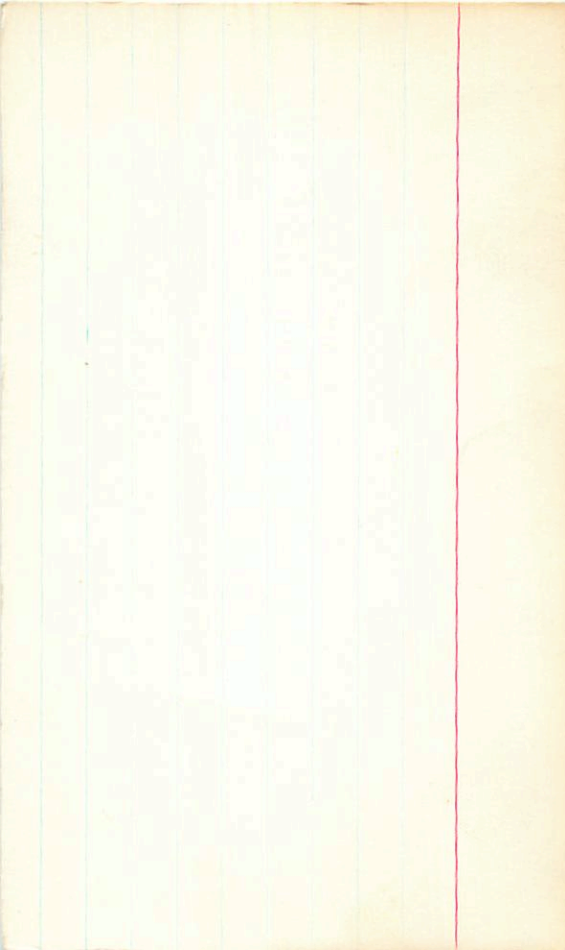
12.16 +1.29 25 March

12.17 +1.32 8 April

12.14  
+1.305

1363 +1.60 +1.04 25 July

12 July



LP853-5

12

29.8

-25

53

13.0

15.0

m

$13.49 + 1.64 + 1.14$  ①

$12.26 + 1.06$  ②

0.95 133 LP





12-38  $V_{avg}$  (R)

12 27

42

+8

34

122+3

172

Spans

40<sup>th</sup> of  
27m 75

12.07

+148 +132

10.58 +120 30m 75  
40<sup>th</sup>

>0 247 B  
.69 249 LP

12 27 43 +8 34

wed/4/4 (18)  
LFTG14

131 M4

12 26.5 +8 42

✓ .70<sup>2</sup>

G12-34

12.07 + 1.68 + 1.32 - ①

10.63 + 1.205 21 Mar 76  
10.58 + 1.20 30 Apr 78

X

G12-38

