

BPM 55198

LF 7825

-3109113

..085 (16)

1872

-40

✓

11 33.0 -32 14

-082
-830

0
+25
-859

5

9.86 + 1.475 + 1.17 (2)

8.78 + 0.895 (2)

.834 184 BPM
.78 182 LP

BPM 7120

LFT 845

L 68-144

245-4

-993

+765

511

+93 ✓

11 43.6 -73 55 ✓

14.52 + 1.43 + 1.19 (2)

13.64 + 0.62 (3)

807 341 8PM

GM 790388

LFT 849

11

44.6

RT

SB

12.7 + 3

.87 54 C

.87

57 GM

628429

Bemporand

-885 - 615 Bemporand

-850 - 530 \overline{II}

-855 - 645 \overline{G}

LF T846

11 44.0 -151

+510 1696

9.40 + 0.8 - 0.14 (2)

176-53

-0.004 (2)

186

Q122-42 11 41.1 1.14 14 + 10 15-9 H

9 4-51 2c.

APM06157

LF7923

11 36.1 -41 06

• 948 2750

L396-10

-1275

+75

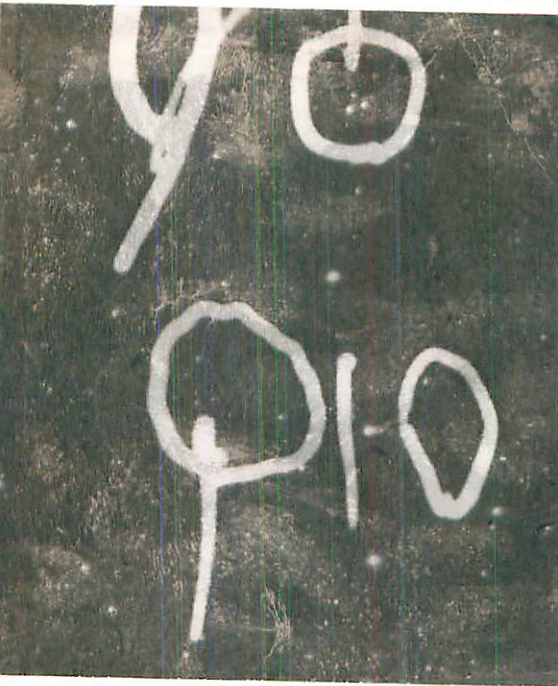
1.1

+25

✓

13.90 + 172 + 120 ②

12.31 + 121 ③



Q12

10-2

LFT 833

5 =

LFT
4913

✓

G-10-53

11

472

+5

15

12

12.44 + 103 + 0.585 p

11 48 31 + 5 06.5

~~After 1.67 7.025 arrow~~

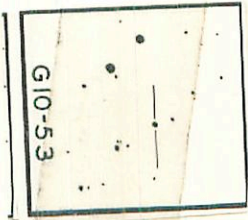
Windy

12.05
~~12.05~~

+ 0.405 18 April

✓

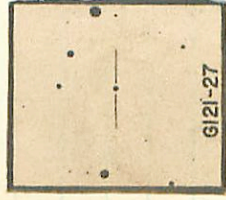
G10-53



9121-27 ✓ 1900 11 50 00 +27 47.8

52 - 5 1/2

1967 11 50 52 +27 42
1980 11 51 35 +27 37.5



✓ 13.5 + 1.00

5230

1417

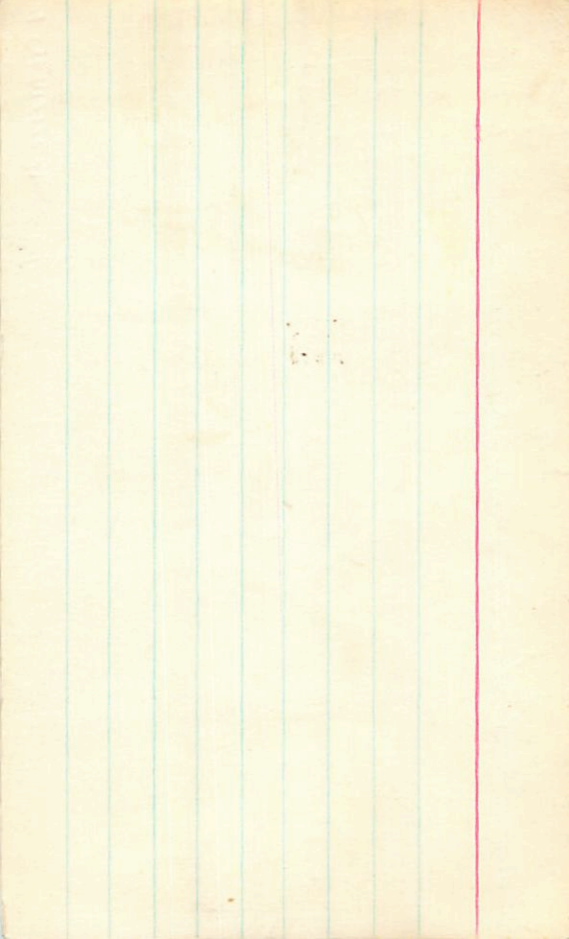
W¹¹ FP

~~12.26 + 0.94 + 0.44 2920~~

11.99 + 0.3618476
~~11.73 + 0.39414777~~
11.86 + 0.378

~~FP~~ ←

25000000



LP
0.82-269

LP733-24 11 45.8 -11 00 12.1 13.3 h

12.50 +1.46 +1.16 ①

11.80 +1.10 2

R0009A

LFT856

L1405-19

L2-1219

the 800'

✓

11 5136 +27 470

11 50.0 +27 48

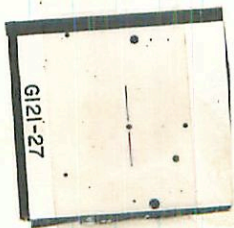
~~12.7~~

12.86 +0.54 +0.44 ①

-985-3208000

-915-2506

-983-364 FT



G121-27

+740-275 66

BVM

LF7854 11 48.1 +2 03

GL 16715

3.60+0.56+0.10

0.95 (36)

R.87

3.38+0.165 567

102870HD



+0495-276

+4.7

x

R000119

LFT859

11 51.6 +10.06

.50 1730
.742 173 BAN
R000

G12-4

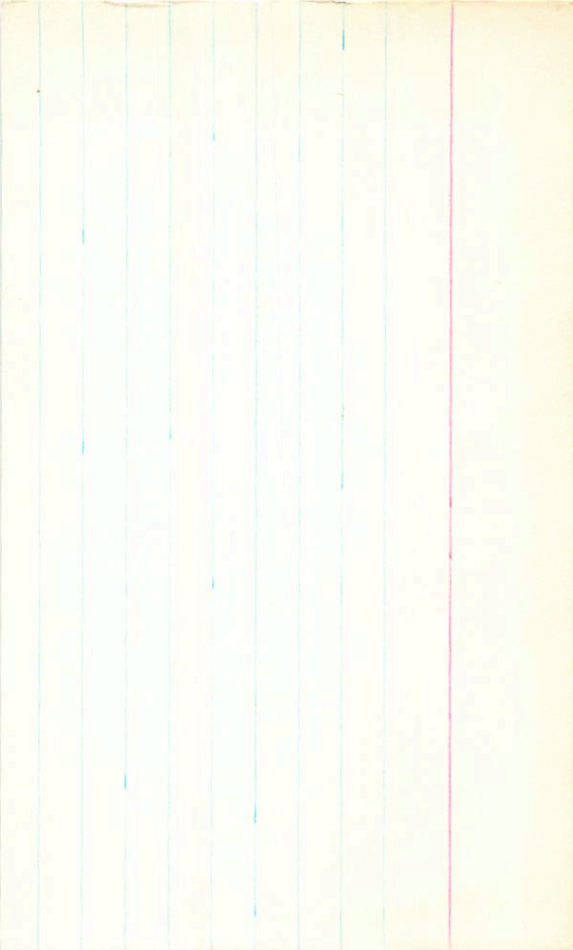
+100-961

12.74 +173 - 512
12.81 +165 +1245 ①

BPM97719

12.76 +1.20 +1.24 ②
11.38 +1.12 ②





.80 271 G ①
.655 273 RPM
R

-690 +100 Rms
-655 +35 RPM
-500 +15 G
-725

11 52.6 +1 15

13.3 M2

11 53 53 +1 08

12.5 +2

Ross 129

LF 862

G 11-31

.036 (G)

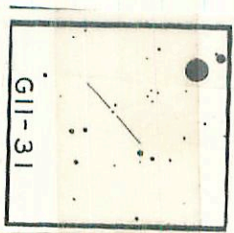
RPM 97740

Van Nostrand

-724

16.44 +0.89 271 M2

X



11 56 16 +11 58

176 279 G
~~170 242~~ P
168 241 BPM

Pass 122

11 55.0 +12 06

RF 1864

11.89 +1.96 +1.16 5R

G12-12

BPM 8770

1073 +0.93 217m 76

X



G12-12

BPM 55570

11 54 33 -38 07

.713 116 BPM

LFT 863

11 33.3 -37 54 13.6 R

L469-75

(OK)

2477

LH 5

X

10.97 10.83 ✓ 21m 76

BPM 55831

11 53 06 - 34 13

759 2750 BPM

LF 7860

11 51.8 - 34 06

L-541-154

ⓐ

15.0 mm
5 16.0
20

~~Blank~~

12.49

+1.185 376

12.64

+1.185 1872

∴ 12.55

58114
+1.185

How

14

ⓑ

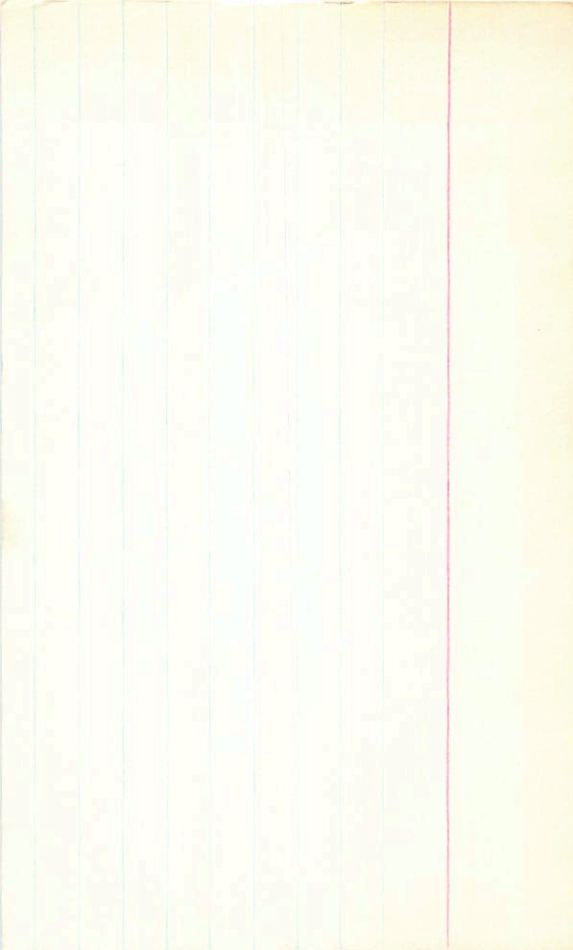
.702676

G-148-23

11

58.0 + 36 30

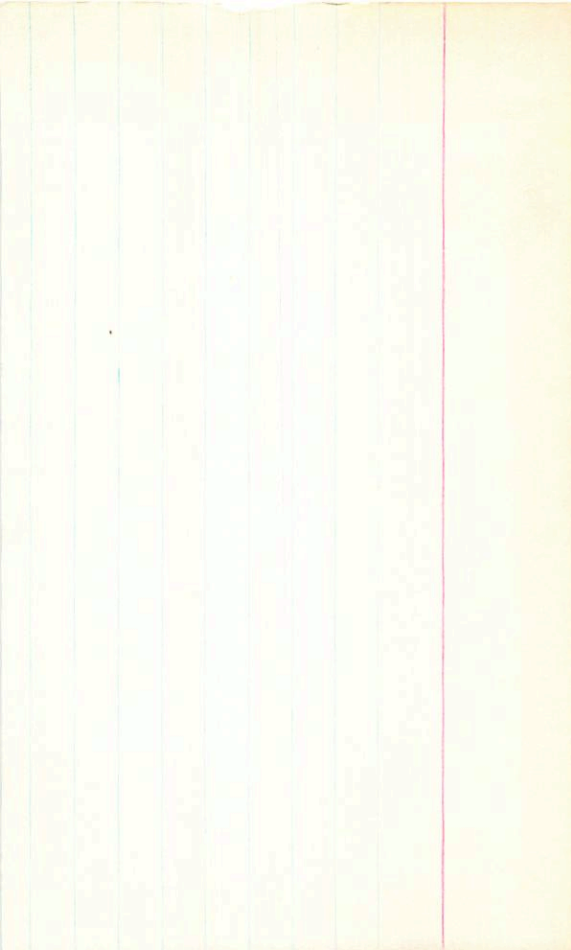
14.8 + 3



G-197-38

11 56.0 +59 50 12.2 +2-

170 264 G-



Radcliffe ←
BPM87954

6FT872

L1405-9

G121-45

SAS6-27

-784 0

+

12 01 03 +28 43

17 59.8 +28 52

14.7 m4

1.28 266 B
Pulk
1.758 222 BPM
R

11.81 +1.115 12m27



G121-45

1416

G11-35

12

01

03

78

36

149

23

12.58 +0.50 15 April 78

DPMS5751

12 02 40 -32 53

1722 277 0AM

1FT875

12 01.48 -82 45 15.1 AM

L541-50

12.38 +1.30 3mg77

x